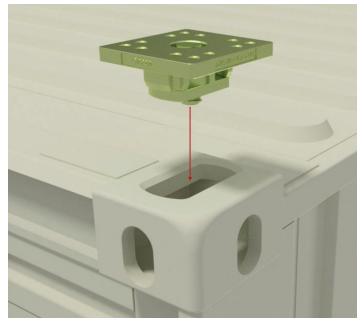
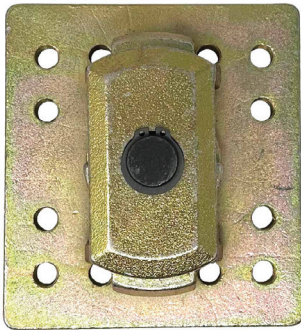
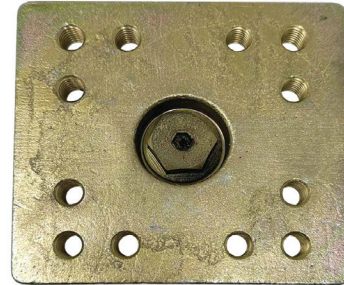
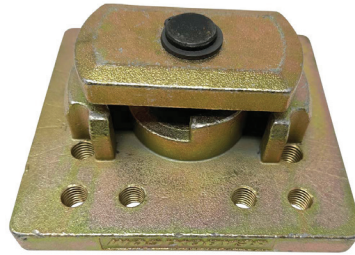
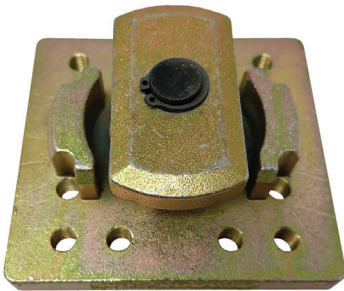


## Top Mount Twistlock

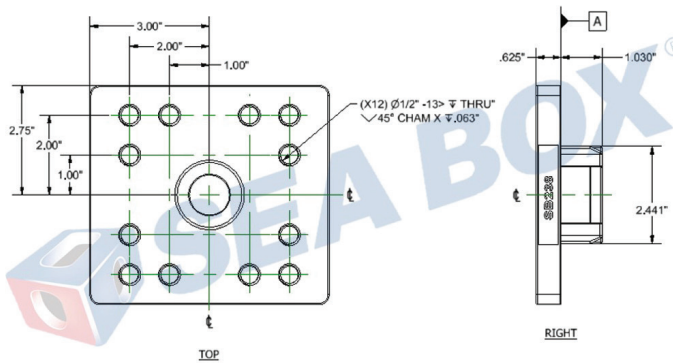


### PRODUCT SPECIFICATIONS

- Material: Cast Steel (Yield = 60KSI)
- Finish: Zinc Yellow Chromate
- Capacity safe working load 5 Ton tension
- Braking capacity tension 10 tons
- Rated capacity shear 36 tons
- Tare weight 8.7 lbs, 3.95 kg
- (12) 1/2-13 UNC tapped holes on the plate

### STANDARD FEATURES

- Compatible with all ISO type containers



\* This product is not rated for lifting overhead.  
 \*\* This product has not be rated in bending

081423-R00

ISO 9001



CERTIFIED QUALITY  
MANAGEMENT SYSTEM

	TALL	WIDE	OVERALL THICKNESS	PLATE THICKNESS
Inches	5.5	6	2.75	.625
Metric	140	152	70	16

ALL DIMENSIONS AND WEIGHTS ARE NOMINAL AND SUBJECT TO MINOR VARIATIONS THAT MAY OCCUR DURING THE MANUFACTURING PROCESS