



USER MANUAL (NORTH AMERICA)



Nutroz ozone device

EPA Establishment Number 100211-CAN-1

Manufactured for: Puro Canada Inc.

14 Centennial Drive

Penetanguishene ON Canada

L9M 1R8

BEFORE YOU START

Please ensure that all items in the box are dry. The NUTROZ device is not designed to work with wet or damp items.



If the NUTROZ displays a red indicator light approximately 1 minute after starting a cycle, excess moisture may be present, this prevents the device from turning on. Please open the device and allow it to air dry and the items inside to dry before attempting to start another cycle.

Please read this user manual completely before use.

Contents

IMPORTANT SAFETY INSTRUCTIONS.....	5
PRECAUTIONS TO AVOID DIRECT EXPOSURE TO OZONE.....	6
REQUIRED INSPECTION:.....	9
HOW DOES THE NUTROZ DEVICE WORK?	14
PARTS AND FEATURES.....	15
TOUCHPAD AND LIGHT FUNCTION.....	15
LOCKING BUTTON.....	17
LID BRACKET INSTALL.....	19
LIMITATIONS OF TREATABLE ITEMS.....	22
PROHIBITED ITEMS:.....	22
HOW TO OPERATE.....	23
REQUIRED INSPECTION:.....	24
ONE-TIME EMERGENCY RELEASE.....	27
Emergency Access Process 1 (With Power):.....	27
Emergency Access Process 2 (Without Power):.....	28
FILTER REPLACEMENT & RESET.....	32
When To Replace:.....	32
Filter Safe Handling Information:.....	33
DEVICE CARE AND MAINTENANCE.....	36
TROUBLESHOOTING.....	38
FAULT STATES.....	39

IMPORTANT SAFETY INSTRUCTIONS

1. WARNING—To protect against serious injury or death, basic safety precautions should be observed, including those listed below.

- a. **READ AND FOLLOW ALL INSTRUCTIONS BEFORE USING THE NUTROZ DEVICE.** This NUTROZ device utilizes high concentrations of ozone. Failure to carefully read and follow these instructions can result in **harmful ozone exposure**, which can cause irritation of eye, skin, nose, throat, and lungs including respiratory system toxicity, serious injury and death. Ozone exposure may also worsen chronic pulmonary conditions such as asthma and reduce ability to combat respiratory infections.
- b. **DO NOT OPERATE THIS NUTROZ DEVICE IF YOU HAVE ASTHMA OR CHRONIC PULMONARY CONDITIONS.** The NUTROZ device utilizes ozone. Exposure to ozone can be extremely hazardous to individuals with chronic pulmonary conditions, especially asthma.
- c. **DO NOT ALLOW THE NUTROZ DEVICE TO BE USED BY ANYONE WHO IS UNFAMILIAR WITH THESE INSTRUCTIONS.** Serious injury can occur as a result of misuse.
- d. **LIVING OBJECTS ARE NEVER TO BE PLACED IN THE NUTROZ DEVICE.** High ozone concentrations generated within the NUTROZ device during a NUTROZ device cycle can cause serious injury or death to living things.
- e. **DO NOT USE THE NUTROZ DEVICE WITH THE PROHIBITED ITEMS** identified in the *Prohibited Items* section of this manual (page 22).
- f. **THE NUTROZ DEVICE IS NOT INTENDED FOR USE BY MINORS.** Do not allow minors to operate or play with the NUTROZ device or touch any of its buttons. Failure to follow these instructions can result in inadvertent and improper activation of the NUTROZ device, which can lead to serious injury or death.

PRECAUTIONS TO AVOID DIRECT EXPOSURE TO OZONE

- a. AVOID DIRECTLY INHALING OZONE FROM WITHIN THE CHAMBER.
- b. AVOID OVERLOADING THE DEVICE. REFER TO PAGE 22 FOR LOADING INSTRUCTIONS
- c. DO NOT ALLOW ITEMS TO HANG OUT OVER THE SEAL.
- d. DO NOT UNDER ANY CIRCUMSTANCES ATTEMPT TO OPERATE THE DEVICE WITH THE LID OPEN.
- e. See *IMPORTANT SAFETY INSTRUCTIONS* before operating.

READ THE COMPLETE USER MANUAL CAREFULLY BEFORE USING THE NUTROZ DEVICE & RETAIN THIS MANUAL FOR FUTURE USE.

g. YOU EXPERIENCE ANY OF THE FOLLOWING SYMPTOMS WHILE UTILIZING THE NUTROZ DEVICE, IMMEDIATELY DISCONTINUE USE AND FOLLOW FIRST AID PROCEDURES. Ozone exposure and contact may cause irritation of eyes, skin, nose, throat, and lungs, including respiratory system toxicity, serious injury, and death.

- 1) **Eye Irritation:** Immediately remove contact lenses, if applicable, and flush eyes with large amounts of cool water for at least 15 minutes holding lids apart to ensure flushing of the entire surface. Seek medical attention if irritation persists.
 - 2) **Skin Irritation:** Flush contaminated areas with large amounts of cool water. Remove any contaminated clothing. Wash clothing before reuse. Seek medical attention if irritation persists.
 - 3) **Respiratory Toxicity:** Move immediately to fresh air. For severe cases or if symptoms do not improve, seek immediate medical attention.
- h. KEEP THE AREAS SURROUNDING THE INTERNAL SCREENS CLEAR OF OBJECTS THAT COULD OBSTRUCT AIRFLOW. AIR CIRCULATION IS REQUIRED FOR PROPER

- i. **FUNCTION OF THE NUTROZ DEVICE.** Ensure objects are placed in the NUTROZ device do not obstruct the ventilation, as shown in Figure 1.

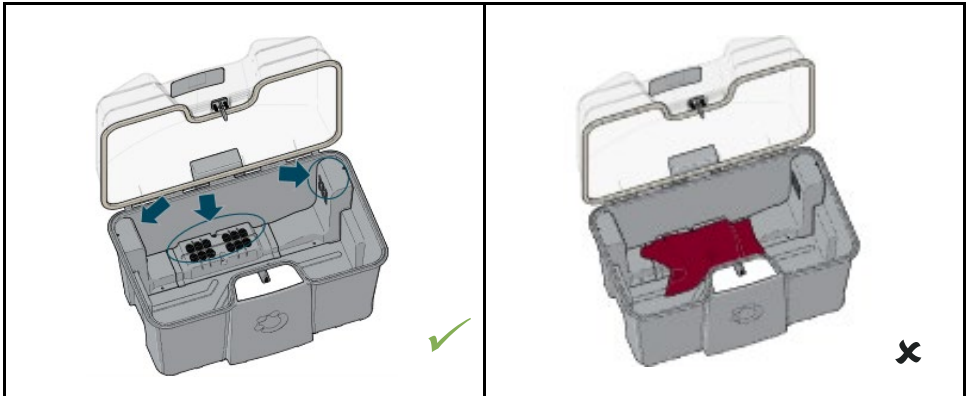


Figure 1 NUTROZ DEVICE with all ventilation accessible (left), and with a blockage which will restrict airflow (right).

j. **TO REDUCE THE RISK OF FIRE AND EXPLOSION:**

- 1) Do not use the NUTROZ device on items that have been exposed to flammable or explosive substances. Ozone can accelerate combustion which can cause an uncontrolled fire or explosion. See *Prohibited Items* section of this manual (page 22).
- 2) Keep the NUTROZ device away from open flames.
- 3) Items that have been exposed to any reactive chemicals should not be used in the NUTROZ device as they may prevent ozone concentrations from reaching required levels and may react negatively.
- 4) Follow material recommendations in the *Limitations of Treatable Items* section of this manual (page 22-23).

- k. **DO NOT ATTEMPT TO OVERRIDE OR BYPASS THE PREDEFINED FUNCTIONS AND SAFETY FEATURES.** Bypassing the predefined safety features such as the

electronic lock or lid seal, before the NUTROZ device fully completes a cycle can result in harmful ozone exposure.

- I. **DO NOT STORE OR USE THE NUTROZ DEVICE OUTDOORS.** The NUTROZ device is intended for indoor operation only.
- m. **KEEP BODY PARTS CLEAR WHEN CLOSING THE LID.** The closing force of the lid can cause injury to body parts. Close the lid carefully. Keep the lid resting in the closed position when not in use.
- n. **DO NOT ATTEMPT OPERATE NUTROZ DEVICE WITHOUT A FILTER**
- o. **THE NUTROZ DEVICE SHOULD BE REPAIRED ONLY BY AN AUTHORIZED SERVICE TECHNICIAN**

2. DANGER— THE NUTROZ DEVICE MUST BE INSPECTED PRIOR TO EACH USE. IF DAMAGE IS DISCOVERED, THE NUTROZ DEVICE SHOULD NOT BE USED OR IF ALREADY IN USE, USE SHOULD BE IMMEDIATELY DISCONTINUED. FAILURE TO FOLLOW THESE INSTRUCTIONS CAN LEAD TO HARMFUL OZONE EXPOSURE. Harmful ozone exposure can cause irritation, of eyes, skin, nose, throat, and lungs including respiratory toxicity, serious injury and death. Ozone exposure may also worsen breathing disorders such as asthma and reduce ability to combat respiratory infections. To ensure proper operation, the pre-usage inspection detailed below and in Figure 2 must be conducted and instructions followed **prior to each use.**

REQUIRED INSPECTION:

- a. **INSPECT THE LID SEAL.** A TIGHT SEAL BETWEEN THE LID AND THE BASE IS REQUIRED TO ENSURE PROPER AND SAFE OPERATION. IF THERE IS ANY DAMAGE TO THE SEAL, DO NOT OPERATE THE NUTROZ DEVICE. Refer to Figure 2 for the location of the seal. Damage could include but is not limited to tears, rips or missing sections. If damage to the seal is identified, unplug the NUTROZ device and ensure it is not used until a replacement seal is installed.
- b. **INSPECT THE EXTERIOR OF THE NUTROZ DEVICE FOR DAMAGE.** A crack, hole or similar damage can allow ozone to leak during operation. If damage is found to the exterior, unplug the NUTROZ device and ensure it is not used.
- c. **CONFIRM THAT THE FILTER LIGHT IS NOT ACTIVATED.** If the filter light is activated, follow the *Filter Replacement and Reset* procedure in this manual (page 32) to change the filter prior to use.
- d. **CHECK THAT THE FILTER IS INSTALLED.** The filter is required to neutralize ozone at the end of each cycle.



Figure 2 Location of seal and lid to be inspected before each use.

3. DANGER— IMMEDIATELY DISCONTINUE USE IF YOU DETECT A STRONG ODOR OR SMELL OF OZONE DURING USE OF THE NUTROZ DEVICE (as compared to residual/less pungent odor smell on items after cycle is complete). Ozone has a chlorinated smell. IF, DURING A CYCLE, A STRONG ODOR OR SMELL OF OZONE IS DETECTED and you are in the immediate area with the NUTROZ device: hold the STOP/OPEN button for 2 seconds and leave the area. Pressing the STOP/OPEN button for 2 seconds will initiate the neutralization cycle and discontinue ozone generation. Do not return to the vicinity until the odor is gone.

4. DANGER—THE NUTROZ DEVICE MUST BE PROPERLY LOADED AND HANDLED DURING OPERATION. FAILURE TO FOLLOW THESE INSTRUCTIONS CAN LEAD TO HARMFUL OZONE EXPOSURE.

- a. ENSURE MATERIALS ARE NOT PROTRUDING FROM THE NUTROZ DEVICE ONCE THE NUTROZ DEVICE IS CLOSED. When closing the NUTROZ device, visually inspect for materials overhanging or obstructing the lid or seal area such as the example shown in Figure 3. If found, adjust the items, or remove excess items to ensure there are no protrusions or obstructions prior to activation.

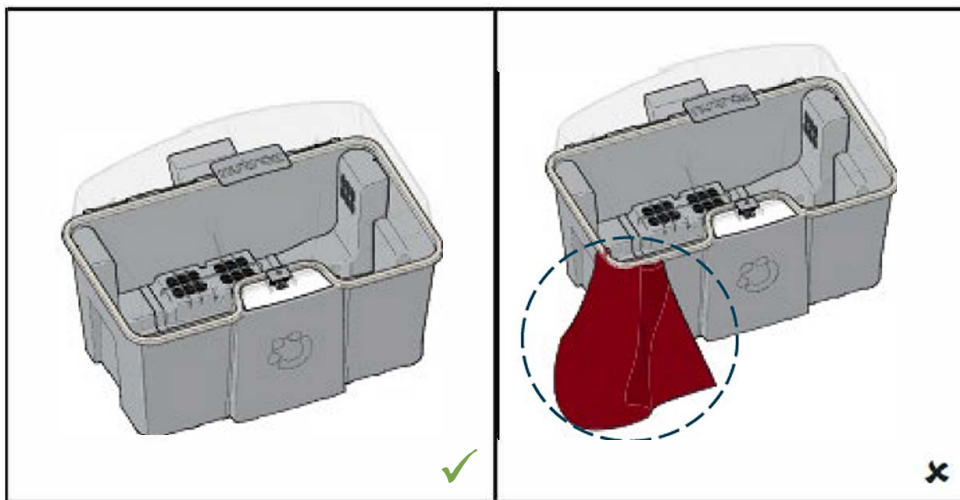


Figure 3 Example of an acceptable seal (left) and an unacceptable seal (right) caused by material(s) protruding out of the lid.

- b. **DO NOT ATTEMPT TO FORCE THE NUTROZ DEVICE CLOSED TO BEGIN OPERATION.** The NUTROZ device should be filled as instructed and should not be filled such that the lid does not easily close. Overfilling the NUTROZ device can cause damage to the lid and seal, which could possibly cause a leak. If the device is properly loaded, the lid should not need to be forced closed. Forcing too much material into the NUTROZ device can reduce the seal performance.
- c. **DO NOT ATTEMPT TO FORCE THE NUTROZ DEVICE OPEN OR REMOVE FILTER DURING OPERATION.** The NUTROZ device is electronically locked upon activation. The lock will release after the cycle is complete and sufficient time has passed to minimize the ozone concentration inside the chamber. Attempting to open or lift the lid during operation can lead to ozone leaking and result in damage to the device.

In the case an emergency opening is required, refer to emergency opening instructions on **page 27**.

- d. **THE NUTROZ DEVICE SHOULD BE USED IN A WELL-VENTILATED AREA.** A large indoor space with good ventilation is optimal.
- e. **AFTER THE CYCLE IS COMPLETE, ITEMS THAT HAVE BEEN TREATED SHOULD BE PLACED IN A WELL-VENTILATED SPACE TO ALLOW ANY REMAINING OZONE CAPTURED IN THE MATERIAL TO DISSIPATE. A SMALL AMOUNT OF RESIDUAL OZONE SMELL ON ITEMS IS NORMAL.**

5. DANGER – THE NUTROZ DEVICE USES HIGH VOLTAGES. To avoid risk of death, electric shock, burns, and fire, the following instructions should be followed:

- a. Required input: 120V, 60Hz, AC only.
- b. The NUTROZ device is for **indoor use only**.
- c. Unplug the NUTROZ device when not in use.
- d. Do not store or use the NUTROZ device near sources of water or in standing water. Do not handle the plug or the NUTROZ device with wet hands.
- e. Never operate the NUTROZ device if the cord or plug is damaged.
- f. Do not unplug the NUTROZ device by pulling on the cord. To unplug from the wall outlet, securely hold the plug and pull straight backwards.
- g. Keep the NUTROZ device and cord away from heated surfaces.
- h. Do not allow the device to be used as a toy. Supervision is required when used near children.
- i. The NUTROZ device must be properly grounded. In the event of an electrical short circuit, grounding reduces the risk of electric shock by providing an escape wire for the electric current. The NUTROZ device is equipped with a cord having a grounding wire with a grounding plug. The plug must be plugged into an outlet that is properly installed and grounded. Never plug the NUTROZ device into a receptacle that is not grounded.
- j. Improper use of the grounding plug can result in a risk of electric shock. Consult a qualified electrician or technician if the grounding instructions are not

completely understood, or if doubt exists as to whether the NUTROZ device is properly grounded.

- k. For use with an extension cord, the cord must be rated for 1 Amp or more. The extension cord must use a three-pronged grounded plug.
- l. Do not attempt to service or replace any part of the NUTROZ device, with the exception of replacing the filter using the instructions in the *Filter Replacement and Reset* section (page 322).
- m. Do not attempt to disassemble any part of the NUTROZ device. This could create a shock hazard.
- n. Device should not be operated outside of 50°F to 104°F (10°C to 40°C) temperature range.

HOW DOES THE NUTROZ DEVICE WORK?

The NUTROZ device uses ozone to remove odors. Ozone is a form of oxygen comprised of three oxygen atoms (O_3), which attacks odor and odor causing bacteria through oxidation. The NUTROZ device uses fans to circulate this ozone within the device.

The NUTROZ device uses two main processes during the ozonating cycle:

1. Ozone Generation Cycle: Ozone is generated using the corona discharge process by adding energy to oxygen molecules (O_2), which causes the oxygen atoms to part ways and temporarily recombine with other O_2 molecules creating ozone (O_3).

2. Ozone Neutralization Cycle: After generating ozone to refresh the items within, the NUTROZ device will begin ozone neutralization using a process known as catalytic ozone decomposition. This process uses a custom designed filter to actively convert the ozone back to oxygen before items can be removed.



PARTS AND FEATURES

TOUCHPAD AND LIGHT FUNCTION

The NUTROZ device touchpad is shown in *Figure 4* and the touchpad with all LED indicators can be seen in *Figure 5* below.



Figure 4 NUTROZ device touchpad

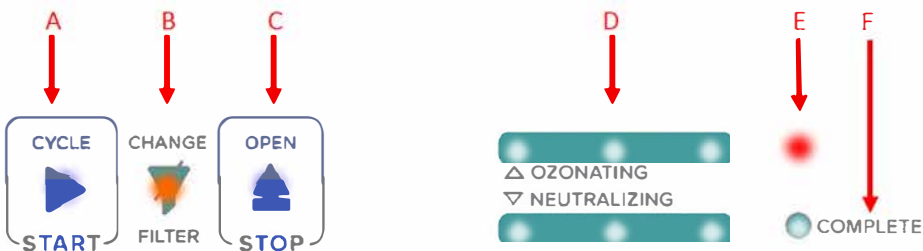


Figure 5 LED indicator locations with reference letters

START button (A) – This button starts the ozonating cycle. Once the lid is locked, the START button will begin to blink. If the blinking button is selected, the blue START button will illuminate solid and a white LED will begin blinking to indicate the ozonation cycle has begun, as shown in *Figure 6*.

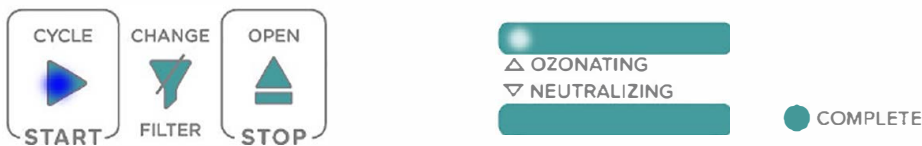


Figure 6: LED indicators illuminated once the START button has been selected.

CHANGE FILTER button and indicator (B) – Over the life of the NUTROZ device, the filter material used to neutralize the ozone will eventually become less effective. The change filter light as shown in Figure 7 (orange), will begin to flash slowly to indicate the filter is approaching the end of its useful life and should be changed soon. When this orange light remains steadily on (no flashing), the filter has reached the end of its useful life and must be replaced, and the device will not function. Follow the instructions in the *Filter Replacement and Reset* section (page 32) prior to use.

CAUTION: Do not attempt to operate the device with the filter removed.



Figure 7 Filter LED is lit to indicate either the filter is approaching the end of its useful life (slow flash) or that the filter must be replaced (solid, not flashing).

STOP / OPEN button (C) – At the end of a complete cycle the STOP / OPEN button will flash, and the complete status indicator will be illuminated as shown in Figure 8. At this time, pressing the STOP / OPEN button once will release the lid.



Figure 8: LED indicators illuminated at the end of a cycle.

The STOP / OPEN button can also be used to stop an ongoing cycle within the first minute of locking, before ozone generation begins. If a cycle is stopped within this first minute, pressing the button a second time will release the lid and open the NUTROZ device.

NOTE: Ozone generation begins after the first minute of a cycle. After this time, pressing and holding the STOP / OPEN button for 2 seconds will initiate the neutralizing cycle and begin neutralization of the ozone from the chamber. Once the device completes the neutralization cycle, the STOP / OPEN light will flash indicating that the lid can be opened. In addition, the ozonating and fault LEDs will be flashing, indicating that the items have not received sufficient ozone exposure. Refer to page 39 for fault state definitions.

OZONATING & NEUTRALIZING (STATUS) INDICATOR (D) – The ozonating status indicator is used to display the progress of a cycle while operating. The cycle consists of two main processes:

Ozone Generation Cycle: One minute after the cycle begins the NUTROZ device will start generating ozone. The three white LEDs in the top indicator strip will blink and then remain illuminated in sequence to indicate progress in the ozonating cycle.

Ozone Neutralization Cycle: After the ozonating phase is complete (all 3 white LEDs will be illuminated) the NUTROZ device will begin neutralization. The three white LEDs in the bottom indicator strip will blink and then remain illuminated in sequence to indicate progress in the neutralization cycle.

FAULT INDICATOR (E) – The fault indicator is a red LED which only illuminates when a system error occurs. See the troubleshooting section for more information on how to manage any faults/errors.

CYCLE COMPLETE INDICATOR (F) – This white LED is used to indicate the completion of the cycle. When this light is illuminated the STOP/OPEN button may be pressed to open the NUTROZ device as shown in Figure 8 above.

LOCKING BUTTON

The locking button is used to lock the lid onto the base. Refer to Figure 9.

- A. The locking button takes effort to engage to ensure a tight seal between the lid and the base. It is recommended to depress this button with the user's palm.
- B. If the lid is not properly locked, the NUTROZ device will beep upon attempting to start a cycle. The lid must be properly closed and locked before a cycle can begin.

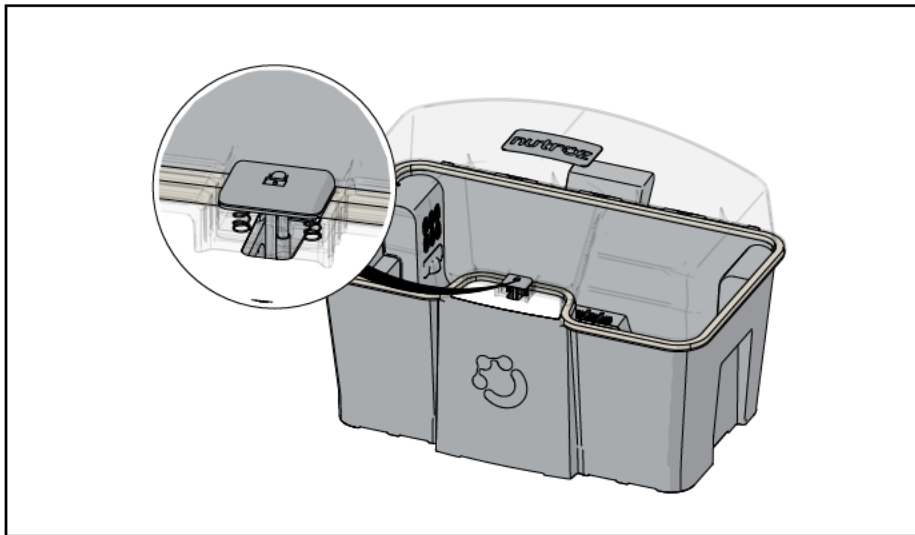


Figure 9 Location of locking button on lid of NUTROZ device.

LID BRACKET INSTALL

The NUTROZ device arrives without the lid bracket installed. When first setting up the NUTROZ device, the bracket must be installed. This bracket will be located at the rear of the NUTROZ device. This bracket is fastened to the NUTROZ using the pre-installed adhesive. The lid bracket allows the NUTROZ to sit with the lid open for easier loading/unloading when limited space is available.

Step 1: Identify the bracket and ensure that the double-sided adhesive pad is properly attached to the bracket. The bracket is shown in Figure 10.

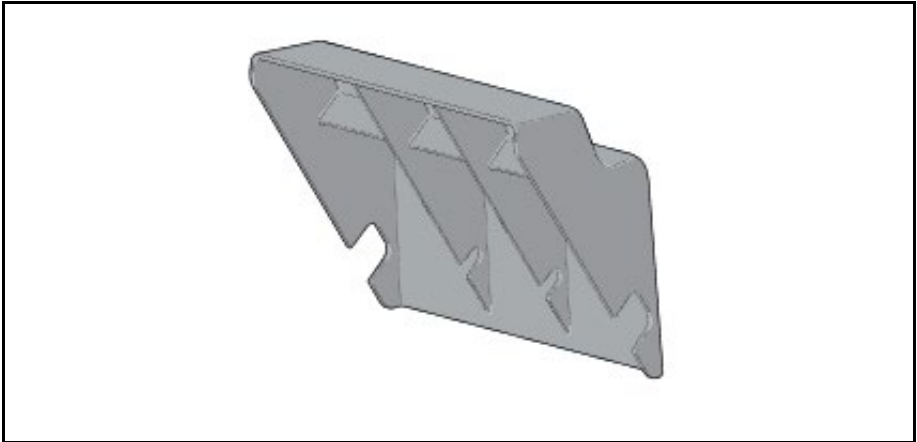


Figure 10 Lid bracket included in box before installation.

Step 2: Remove the side of the double-sided adhesive that will stick on the NUTROZ device. This will allow the bracket to be attached to the NUTROZ device.

Step 3: Align the notch on the bracket to the rear side of the NUTROZ device. The NUTROZ device has a rib in the center as shown in Figure 11.

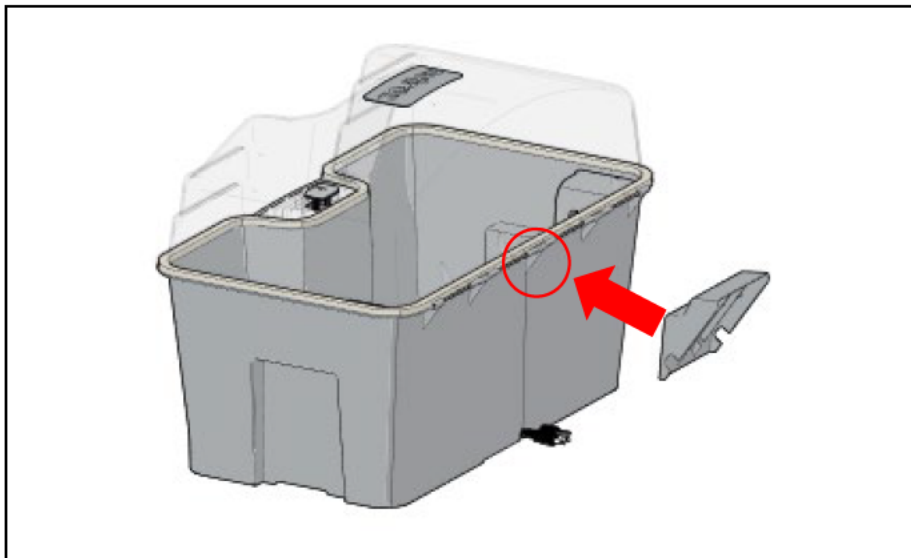


Figure 11: Remove the adhesive liner and align the bracket around the centermost rib on the NUTROZ device.

Step 4: Attach the bracket to the NUTROZ device by pressing the bracket towards the NUTROZ device. If aligned correctly, the rib and notch for both parts will fit together.

Step 5: Firmly press the bracket onto the NUTROZ device to set the adhesive. To ensure that the bracket install was successful, slowly open the lid to the open position as shown in Figure 12. If the bracket install is successful, the bracket should sit firmly on the NUTROZ device.

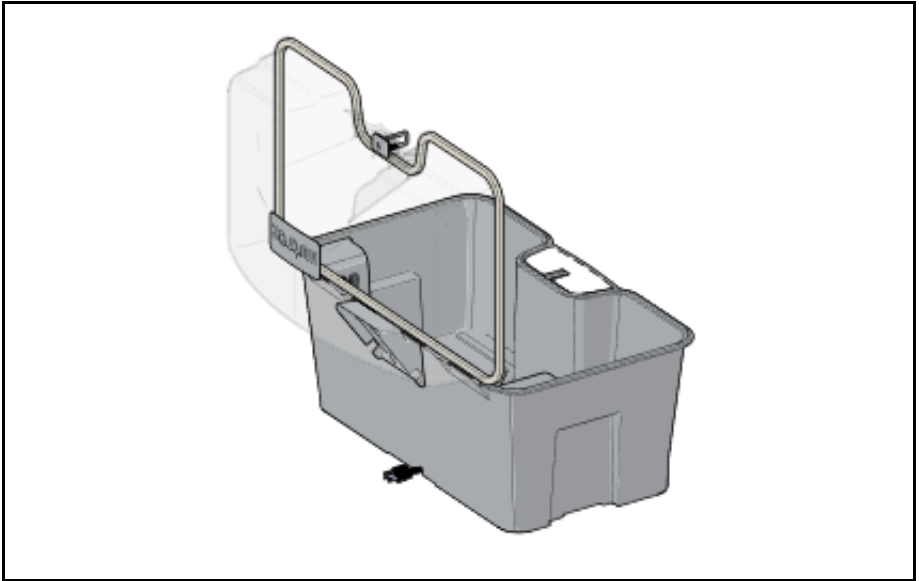


Figure 12 After installation, the lid bracket will hold the lid in the position shown.

PROHIBITED ITEMS

THE FOLLOWING ITEMS SHOULD NEVER BE PLACED IN THE NUTROZ, AND COULD RESULT IN INJURY, DEATH, FIRE, OR PROPERTY DAMAGE.

- Living things (pets, animals, humans, plants, etc.)
- Materials with solvents (turpentine, varsol, acetone, paint thinner, etc.)
- Flammable or explosive items (gasoline, kerosene, etc.)
- Items exposed to solvents, flammable, or explosive items (rags, clothing, etc.)
- Medical Devices
- Medications
- Food
- Latex



The effectiveness of the NUTROZ may be reduced when used with damp or wet items. For best performance ensure all items placed in the NUTROZ are dry. Do not place items that are wet/damp in the device.



Do not place electronics inside the NUTROZ. Ozone can directly damage electronics and exposed metals.

LIMITATIONS OF TREATABLE ITEMS

DISCLAIMER: Puro Canada Inc. is not responsible for material wear or damage of items resulting from use of the NUTROZ.

Materials react differently when exposed to ozone (O₃). Ozone is an oxidizing agent and excessive exposure to ozone can cause some materials to deteriorate or degrade over time. Natural materials (such as natural rubber, leather, or silk) or unprotected metals could see negative effects after multiple cycles and use of the NUTROZ on these materials should be limited.

The chart below identifies Typical Use Items that can be used in the NUTROZ. It is recommended that a Material Condition Check be performed on all items after a cycle.

Reduce frequency or discontinue use of the NUTROZ on any item that appears to be damaged or degraded by the process.

Typical Use Items	Material Condition Check After Cycle
✓ Footwear (shoes, boots, sandals, slippers)	Test flexibility and texture of sole material. Inspect outsole material for cracks or change in finish.
✓ Clothing (shirts, pants, socks, hats, scarves, mittens)	Examine condition of fibers, look for signs of premature wear. Check for changes to surface finishes.
✓ Protective gear (elbow guards, shin guards, helmets, shoulder pads, mittens)	Test the flexibility of moving parts and examine surface finish or plastics. Examine fibers checking for signs of wear.
✓ Household Items (rugs, curtains, bed sheets, pillowcases, pillows, wash clothes)	For soft items, examine condition of fibers and surface texture of material. For hard items ensure surface finish is not degrading.
✓ Other personal items (suitcases, handbags, books, pet beds)	Examine flexible parts like straps for flaking or cracking.

***Check for Discoloration, tackiness/stickiness of all materials**

HOW TO OPERATE

Follow the steps below to run an ozonation cycle in the NUTROZ device.

- A. **Plug in** the NUTROZ device into a 3-pronged outlet or extension cord that is properly installed and grounded. If using an extension cord, ensure the cord is grounded and is rated for current draw of at least 1 Amp.
- B. Once the lid is locked, either press **OPEN / STOP** button to open the lid or the lid will release automatically after 15 seconds once power is applied.
- C. Review all ***Important Safety Instructions*** (page 5).
- D. Perform the *Required Inspection* before each use:

REQUIRED INSPECTION:

- a. **INSPECT THE LID SEAL. A TIGHT SEAL BETWEEN THE LID AND THE BASE IS REQUIRED TO ENSURE PROPER AND SAFE OPERATION. IF THERE IS DAMAGE TO SEAL DO NOT OPERATE THE NUTROZ DEVICE.** Refer to Figure 13 below for the location of the seal. Damage could include but is not limited to tears, rips, or missing sections. If damage to the seal is identified, unplug the NUTROZ device and ensure it is not used until a replacement seal is installed.
- b. **INSPECT THE EXTERIOR OF THE NUTROZ DEVICE FOR DAMAGE.** A crack, hole or similar damage can allow ozone to leak during operation. If damage is found to the exterior, unplug the NUTROZ device and do not use it.
- c. **CONFIRM THAT THE FILTER LIGHT IS NOT ACTIVATED.** If the Filter light is activated follow the *Filter Replacement and Reset* procedure in this manual (page 32) to change the filter prior to use.
- d. **CHECK THAT THE FILTER IS INSTALLED.** The filter is required to neutralize ozone at the end of each cycle.

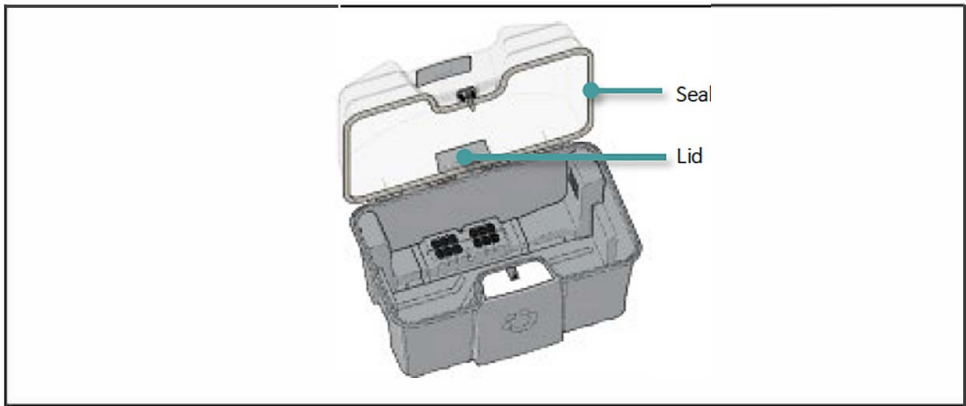


Figure 13 Location of seal and lid to be inspected before each use.

- E. Plug in the NUTROZ device and allow start-up sequence to complete. Note: the start-up sequence is noted by all 12 LED lights strobing from left to right as well as an audio indication for completion.
- F. Consult the Prohibited Items/*Limitations of Treatable Items* section in this manual (page 19) for items that are appropriate for use with the NUTROZ device.
- G. Ensure objects are placed completely inside the device, without any items obstructing the seal. The NUTROZ device should be filled as instructed and should not be filled such that the lid does not easily close or items are compressed. Also ensure objects are not covering important screens.
- H. Close the lid and press the lock button until you hear a click sound. This sound indicates that the NUTROZ device is locked and ready for activation. After successful locking, the START button will flash, indicating that it can be pressed to start an ozonation cycle. Ensure no objects are placed or stored on top of the lid of the NUTROZ device.
- I. To begin a cycle, press the START button. If the START button is not pressed within 15 seconds of locking the lid, the latch will release and the NUTROZ device will not allow a cycle to be started until the latch is locked once again.

- J. Once the cycle is started, the status will be indicated by the white lights on the Ozonating status indicator as shown in Figure 6 on page 16. After one minute has passed, the NUTROZ device will produce an audible sound to indicate initiation of the ozone generation part of the cycle. When the ozone generation portion of the cycle is finished, the NUTROZ device will produce another sound to indicate the initiation of neutralization. This sound will be accompanied by illumination of the first white light on the neutralizing status indicator.
- K. **Interrupting the cycle:** A cycle can be interrupted by pressing and holding the **STOP / OPEN** button for 2 seconds. The NUTROZ device will then initiate a neutralization cycle and begin neutralizing ozone. This will be indicated by the white lights in the neutralizing status indicator. In addition, the ozonating and fault LEDs will be flashing, indicating that the cycle was incomplete. Refer to page 39 for fault state definitions. If the lid **MUST** be opened immediately, follow the directions in the *One-Time Emergency Release Procedure located at the bottom of the NUTROZ device* and in the ONE-TIME EMERGENCY RELEASE section of this manual (page 27).
- L. Once the cycle is complete, a chime will sound, the **STOP / OPEN** light will flash and the Complete light will light up, indicating that the cycle is complete and the NUTROZ device can be opened (as shown in Figure 8). Press the **STOP / OPEN** button to release the latch and open the NUTROZ device.
- M. After the cycle is complete, items inside the device may have an ozone scent. Some individuals are more sensitive to the scent of ozone, which can be minimized by leaving the item out to air after completion of the cycle.

ONE-TIME EMERGENCY RELEASE

In the event of an emergency requiring immediate access to the items in the NUTROZ device during a cycle, the following emergency access procedures should be followed. If the NUTROZ device is powered follow *Emergency Access Process 1*. If Emergency Access Process 1 does not work or there is a loss of power to the device, follow *Emergency Access Process 2*.

CAUTION: Both emergency access processes could expose you or others in the area to **HARMFUL OZONE EXPOSURE** which could lead to irritation of skin, eyes, nose, throat and lungs including respiratory toxicity, serious injury and death. These processes should only be used in the event of an emergency. If possible, perform these emergency access procedures in an open well-ventilated area. PuroCanada Inc. disclaims any liability arising out of or in connection with either of these emergency access processes.

Emergency Access Process 1 (With Power):

For immediate emergency access to the contents in the chamber, press and hold the **STOP / OPEN** button and the **START** cycle button simultaneously. After the buttons have been pressed for the total 5 seconds the latch will release. **NOTE: PERFORMING THIS OPERATION BYPASSES THE NEUTRALIZATION PROCESS. ALL OZONE WITHIN THE NUTROZ DEVICE WILL BE RELEASED TO THE SURROUNDING ENVIRONMENT.**

Emergency Access Process 2 (Without Power):

This emergency access process involves breaking the lower panel of the NUTROZ device to access the latch and open it manually. This process requires substantial force to break the panel and in doing so sharp edges may be exposed or created which could lead to injury. This process will render the device no longer usable.

Step 1: Unplug the NUTROZ device. If you are breaking the lower panel you will be accessing the area where the electrical components are located and to minimize the risk of electric shock ensure the NUTROZ device is not connected to power.

Step 2: Tip the box to expose the bottom as shown in Figure 14.

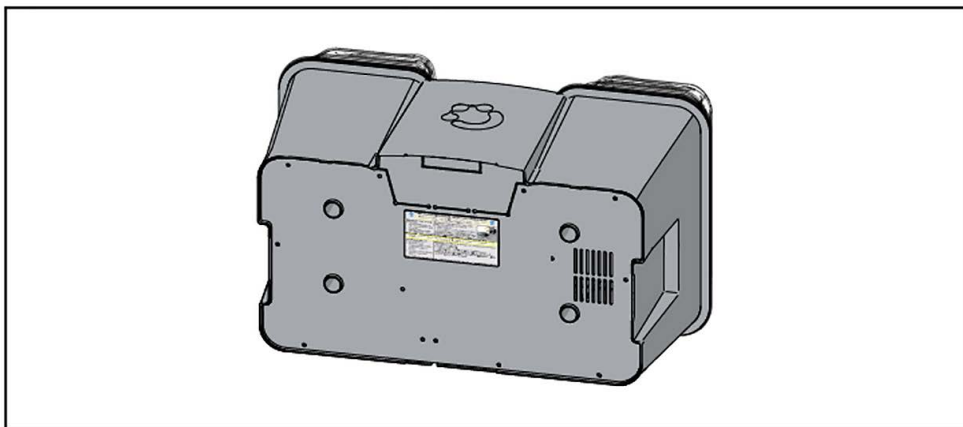


Figure 14 Bottom of NUTROZ device

Step 3: Break open the emergency access panel of the box (shown in Figure 15). This will take effort; keep pressing hard in ward on the cover to break the panel. **Wearing gloves** is recommended.

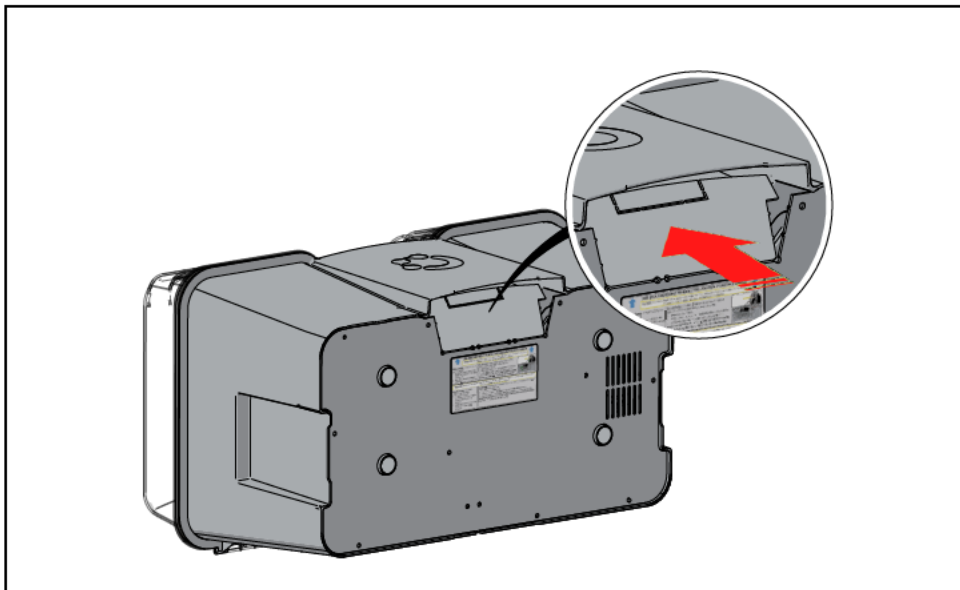


Figure 15 Emergency Access Panel Removal

Step 4: With the bottom panel opened, locate the latch assembly seen in Figure 16. The latch is a black device with a silver release lever.

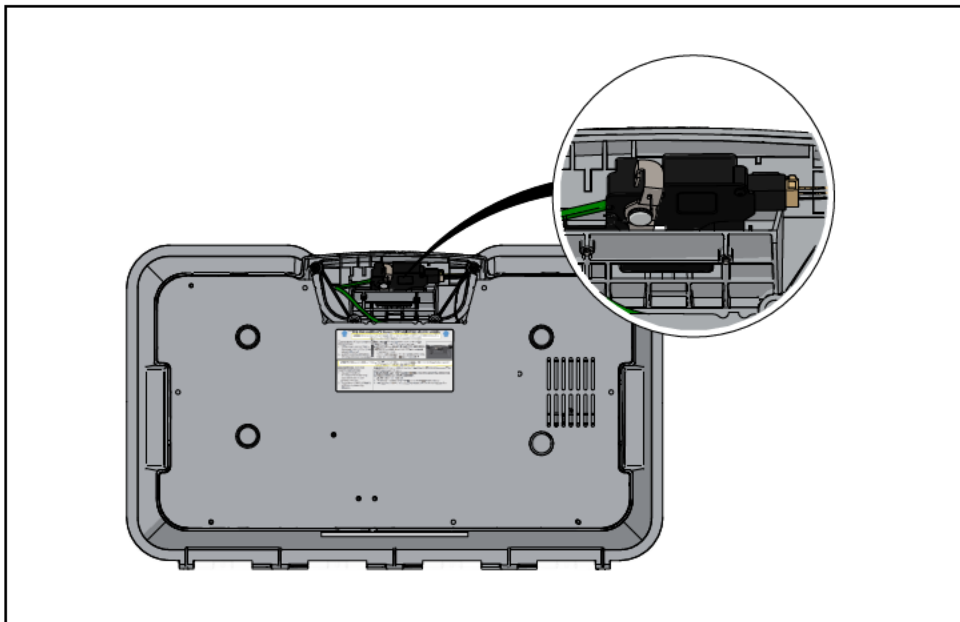


Figure 16 Latch Location

Step 5: Find the latch release lever (shown in Figure 17). It is a silver coloured lever on the latch assembly at the lowest point of the latch. Push the lever to the side to release the latch and the NUTROZ device lid will open.

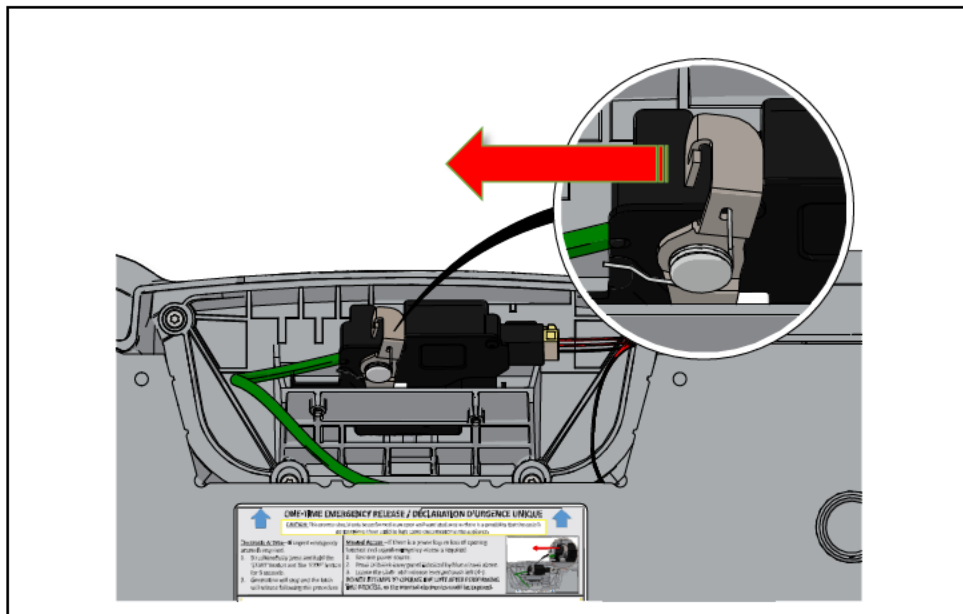


Figure 17 Manual Release lever location after access panel is broken

FILTER REPLACEMENT & RESET

The NUTROZ device uses a specially designed filter containing a neutralizing agent to reduce the ozone concentration in the chamber at the end of a cycle. Failure to replace the filter following the procedure below may result in ozone exposure.

Each filter is designed to be useful for an average of 80 cycles.

CAUTION: Do not operate the device without the filter installed. The filter is required to neutralize ozone at the end of the cycle.

When To Replace:

The **FILTER** light will begin to flash slowly (see Figure 7, page 16) when the filter has reached approximately 90% of its useful life, and should be replaced soon. When the **FILTER** light remains illuminated (not flashing) the filter must be replaced. If the light is NOT illuminated but a strong odor is detected, change the filter. If the odor persists after changing the filter, do not use the device and contact Puro Canada Inc

Replacement filters can be purchased online by visiting www.nutroz.com

Filter Safe Handling Information:

Avoid inhalation, skin contact, eye-contact, and ingestion of the granular materials within the filter. Do not attempt to puncture or tear open the filter containing the granular materials. Keep away from children.

- 1) If inhalation occurs: Immediately move to fresh air. Seek medical attention and administer oxygen if breathing is difficult. Inform your medical professional that this product contains Manganese dioxide and copper Oxide.
- 2) If skin contact occurs: Flush area with water and remove any clothing which may be contaminated. Seek medical attention if irritation continues.
- 3) If eye contact occurs: Hold eyelids open and flush with water. Seek medical attention if irritation continues.
- 4) If ingestion occurs: Do not induce vomiting. Drink large quantity of water and seek medical attention.

If the filter has reached the end of its useful life and the FILTER light remains illuminated (not flashing), do not start another cycle until the filter is replaced and reset. Failure to follow this instruction could lead to excessive ozone remaining in the NUTROZ device. The filter contents are harmful if swallowed or inhaled and can cause skin irritation and serious eye irritation if removed from the packaging. Repeated or prolonged inhalation of or skin exposure to the inside contents of the filter may also cause brain damage.

Do not place the used or new filter on surfaces used for eating or food preparation where ingestion could occur. Wash hands thoroughly after handling the material. Do not eat, drink, or smoke when handling the filter, or inhale dust from the material. The filter must be handled in a well-ventilated area or outdoors. The filter must be disposed in compliance with local/regional/federal/international law and regulation for Manganese dioxide and Copper oxide.

To change the filter and reset the indicator light, follow the steps below:

1. Open the NUTROZ lid and remove the drawer holding the filter (Figure 18).

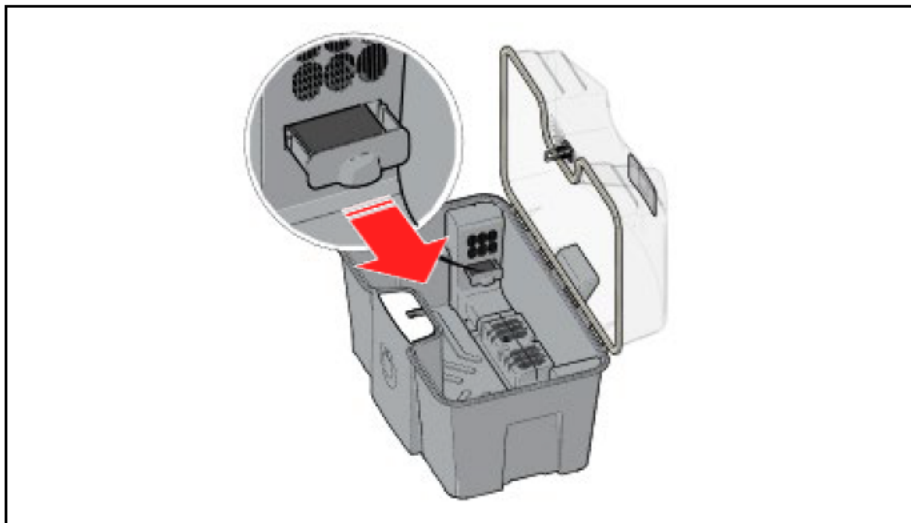


Figure 18 Filter drawer removal

2. With the drawer removed (Figure 19), remove the old filter and discard. The filter must be disposed of in compliance with any applicable local/regional/federal/international law and regulations.

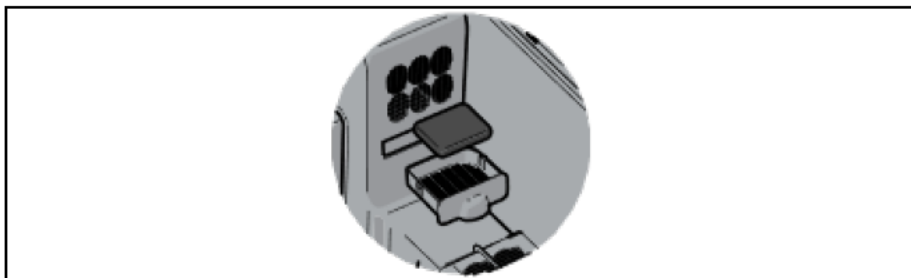


Figure 19 Filter bag removal from drawer

3. Insert a new filter into the filter drawer and slide the drawer back into its slot (Figure 20).

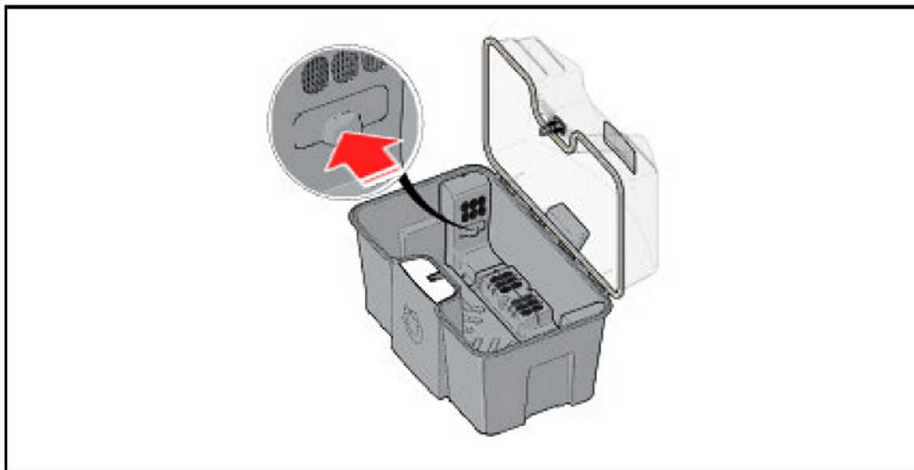


Figure 20 Filter drawer insertion

4. Press and hold the FILTER button for 5 seconds until the filter light turns off (Figure 21). This operation can only be done when the NUTROZ device is plugged in and unlocked.

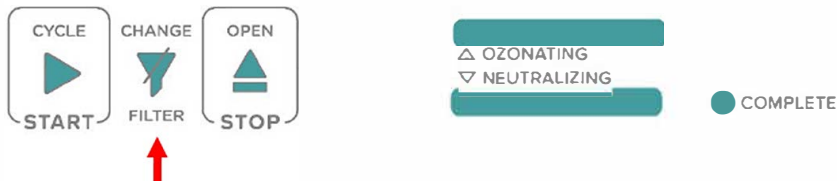


Figure 21 Change filter button location on control panel

5. When the filter light turns off, the filter timer has been reset and the NUTROZ device is ready for the next cycle.

DO NOT ATTEMPT TO RESET THE FILTER TIMER WITHOUT INSERTING A NEW FILTER. A FILTER IS ALWAYS REQUIRED DURING OPERATION. ENSURE FILTER IS INSTALLED BEFORE NEXT USE. Puro Canada Inc. disclaims any liability arising from or in connection with the failure to properly replace the filter.

DEVICE CARE AND MAINTENANCE

The NUTROZ device, like many other devices, will require periodic care and maintenance in order to keep it running as efficiently as possible. Follow these steps to maintain your NUTROZ device.

Note: Disconnect the NUTROZ device from any power sources before cleaning. Do not put water or use a dripping cloth or towel inside the NUTROZ device to clean. Ensure any cloth or towel is fully wrung out before wiping the inside surfaces.

1. Do not put heavily soiled items in the NUTROZ device. Soiled items may transfer their impurities to the inside of the NUTROZ device, reducing the efficiency of the ozone generation. If any soiling is noticed on the inside of the NUTROZ device, ensure it is properly removed before running the next cycle.
2. Dust may collect within the NUTROZ device, especially around the fan input and exhaust ports as shown in Figure 22. Ensure these areas are kept clear of dust and debris.
3. After prolonged use, a slight discolouration or haze may build up on the interior surfaces of the NUTROZ device. This can be minimized by regular cleaning of the inside surfaces with a microfiber cloth or towel moistened with a mild soap and water solution, ensuring that the cloth or towel is fully wrung out. Do not operate the NUTROZ until the device is completely dry.



Figure 22 Keep these areas free of dust and debris to maintain cycle efficiency

TROUBLESHOOTING

The NUTROZ device is unable to start a cycle (Failure within first 60 seconds)

In some cases, the NUTROZ device may show an error (red fault LED is on) shortly after starting a cycle. Such a failure may be caused by overheated components, a power surge, or a failure of an internal component such as an air circulating fan. If this happens, it is recommended to unplug the NUTROZ device for 1 hour and then try to start a new cycle. If the issue persists, contact Puro Canada Inc. at 1-888-708-7876 or customerservice@nutroz.com

The NUTROZ device does not unlock

If the red fault LED is on (solid), the neutralization lights are blinking, and the NUTROZ device emits a fault tone, the NUTROZ device has entered a **Lockout** fault state (refer to fault states section on page 39). In this state, it is considered that there is ozone in the device due to a component issue. To address this, leave the device plugged in until the **STOP / OPEN** LED is illuminated (NOTE: this process may take up to 12 hours). Once the **STOP / OPEN** LED is illuminated, pressing it will unlock the lid and clear the fault. If the issue continues, discontinue use and contact Puro Canada Inc. at 1-888-708-7876 or customerservice@nutroz.com

NUTROZ device is unplugged or power is lost during a cycle

If the NUTROZ device is unplugged or power is lost during a cycle, it will go into an **Incomplete Neutralization** fault state (refer to fault states section on page 39) once the power has been restored and will begin neutralization from where it previously left off. This mandatory neutralization must be completed before a new cycle can be started. If emergency access is required during this mandatory neutralization, the emergency access process on page 31.

FAULT STATES

Abort Open

(Red Fault LED on and STOP / OPEN LED flashing)

In this state, the NUTROZ device cycle has either been manually aborted or has been aborted due to a latch issue. The NUTROZ device will not be locked, will give audio feedback of a fault, will display the light layout shown in Figure 24 (solid red Fault LED and flashing STOP / OPEN light) and the NUTROZ device will be out of service. In order to exit this state, press the STOP / OPEN button or lock the NUTROZ device and if the latch is functional, re-start the NUTROZ device cycle to remove any potential remaining ozone. If the latch is not functional, keep the lid in the closed position and bring the NUTROZ device to an open, well-ventilated area to allow natural neutralization.



Figure 23 Indication of fault caused by an abort open sequence

Lockout

(Red Fault LED on and Neutralizing LEDs flashing or on)

In this state, the NUTROZ device is “locked out” so that the ozone can naturally neutralize. The NUTROZ may remain locked for up to 12 hours. The red fault LED will be solid on, and the neutralizing LEDs will be flashing or solid on (Figure 25), depending on the cycle progression, as explained in the *Touchpad and Light Function* section of this document.



Figure 24 Indication of lockout fault state

In complete Neutralization

(Red Fault LED flashing and Neutralizing LEDs flashing or on)

As mentioned above, in this fault state the NUTROZ device will go through a neutralization cycle to neutralize all the ozone within the device. Similar to the lockout state, the neutralizing LEDs will be flashing or solid on, depending on the cycle progression (as explained in the *Touchpad and Light Function* section), but the red fault LED will be flashing (Figure 25). If this occurs, let the cycle complete.

System Fault Locked & Unlocked

(Red Fault LED and STOP/OPEN button flashing)

This error, shown in Figure 27, is caused by a fault in the system where the unlock or lock signal is not received when it is expected. In order to exit the state, press the STOP / OPEN button to attempt to open the latch again and clear the fault. If the fault is not cleared, check for any debris around the latching area or on the lid. If there is no debris or debris is cleared and the fault is still not cleared, call Puro Canada Inc. 1-888-708-7876 or email customerservice@nutroz.com

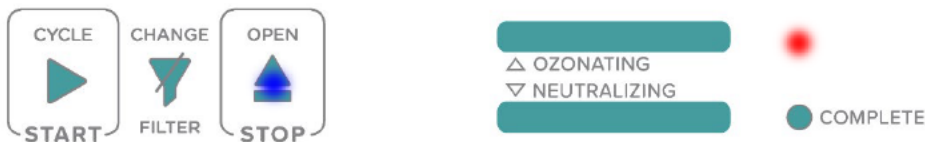


Figure 25 Indication of fault caused by error in the locking system.

Class B Fault (Red Fault LED Solid on)

This error, shown in 26, will cause the NUTROZ device to ignore further inputs. To exit this error state, disconnect the power cord for the device and then reconnect it, allowing it to initialize during power up.

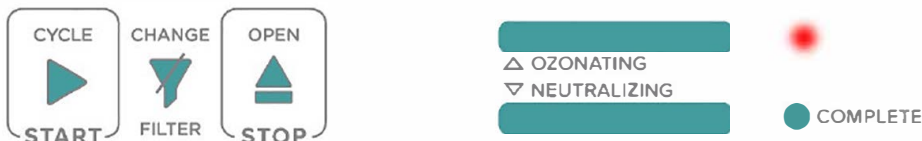


Figure 26: Indication of Class B fault

Note: When diagnosing a fault state, ignore the Change Filter LED, since it doesn't communicate faults. This LED only communicates if the filter requires changing.

General Fault - Service Required (START, STOP, FAULT, middle ozonating, left and right neutralizing)

If this fault pattern is shown, contact Puro Canada Inc. at 1-888-708-7876 or customerservice@nutroz.com

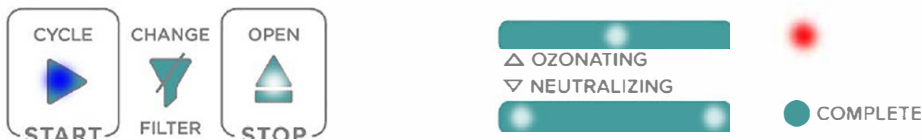


Figure 27 Indication of general fault indicating device service required.



14 Centennial Dr.

Penetanguishene, Ontario

L9M 1R8

[+1 \(888\) 708-7876](tel:+18887087876)

info@nutroz.com