

Flat6 LED Turn Signals Porsche 911 69-73 Installation Guide



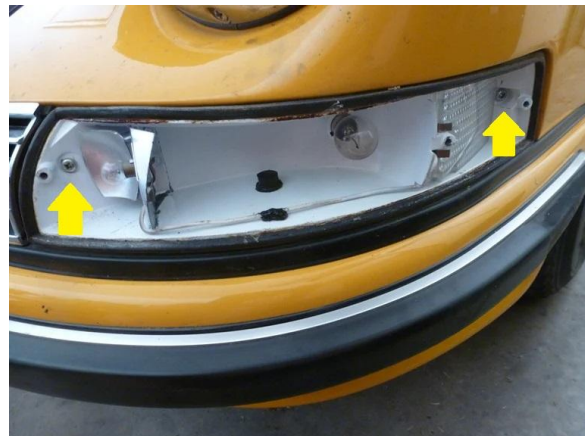
Read all instructions before beginning the install to become familiar with the install procedure.

1) Remove the existing Turn Signals.

First, remove the two screws retaining the lens in place.



Then, remove the two screws retaining the Turn Signal housing in place.



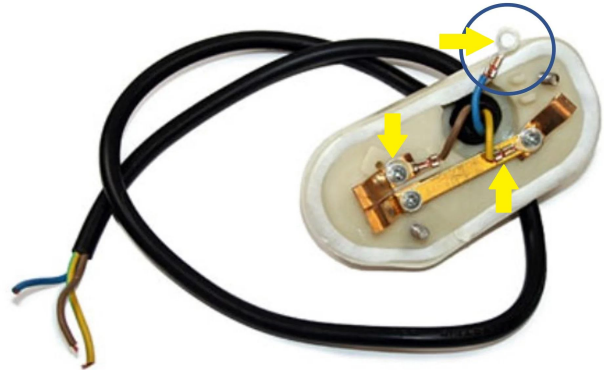
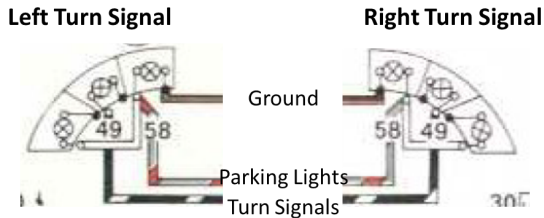
2) Connect the LED Turn Signals to the wiring harness.

Disassemble or cut the wiring harness from the back of the old Turn Signal Housing to expose the three (3) wires to be connected to the new LED Turn Signals:

Parking Light = Grey-Red

Turn Signal = Black-White

Ground = Brown

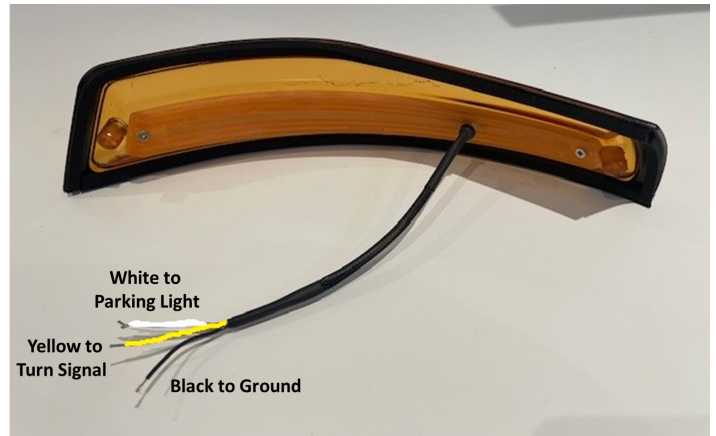


Using the Solder Seal Wire Connector Heat Shrink provided with the kit or other type of connector if you want, connect the wires from the LED Turn Signal directly to the wiring harness using the following color code:

Parking Light = Grey-Red

Turn Signal = Black-White

Ground = Brown



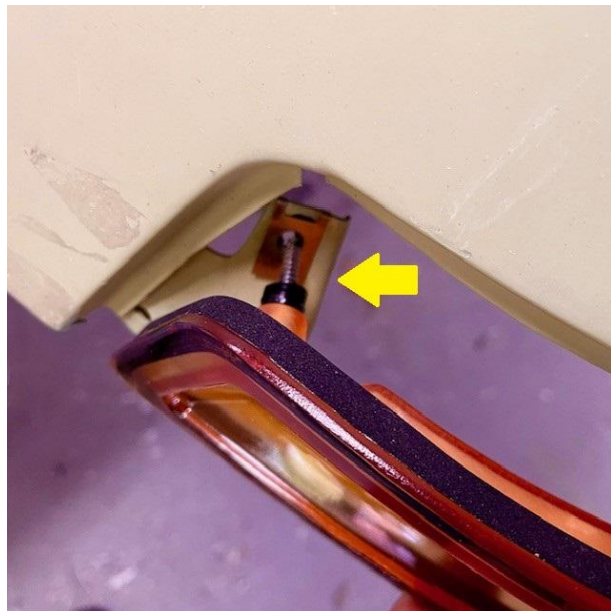
3) Secure in place the LED Turn Signals.

Place the U-Clips provided with the kit on each side of the Turn Signal or use the ones already in place on the car.

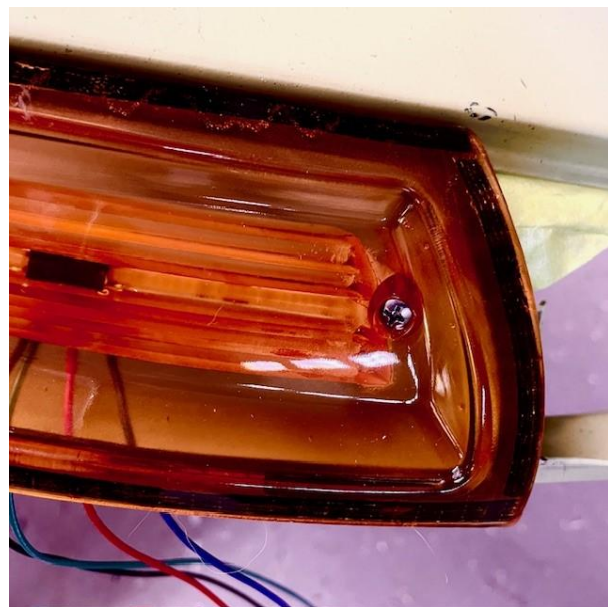


Put in place the screws provided with the kit to secure the LED Turn Signals on the brackets previously installed.

We suggest that you start by putting the center screw in place, do not overtighten the screw.



Then put the second screw in place and finalize the fitting of the turn signal.



4) Installation complete.