

Flat6 LED Tail Lights Porsche 911 69-89 Installation Guide



Read all instructions before beginning the install to become familiar with the install procedure.

1) Remove the existing Tail Lights.

First, remove the three screws retaining the lens in place (green arrows).



Then, remove the two screws retaining the Tail Light in place (green arrows).



B

Cut the wiring harness from the back of the old Tail Lights to expose the five (5) wires to be connected to the new LED Tail Lights.

Parking Light = Grey-Red

Stop Light = Black-Yellow

Back-Up Light = Grey-Brown

Turn Signal = Black-White

Ground = Brown



2) Install the supports for the new LED Tail Lights

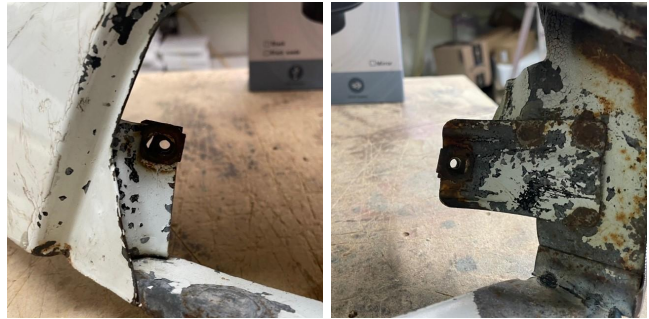
The LED Tail Lights are secured in place using the U-Clips and brackets that are provided with the kit.



We also provide aluminum plates to protect the Tail Lights from rocks and dirt.



Place the U-Clips provided with the kit on each side of the Tail Light housing or use the ones already in place on the car.



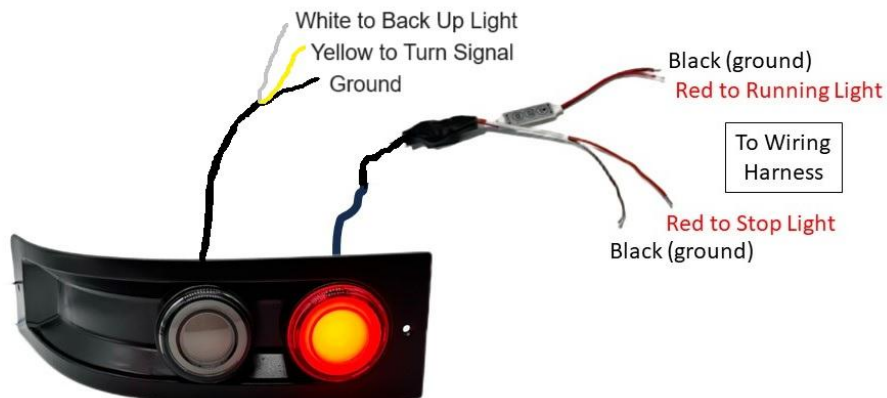
Screw in place the two brackets with the aluminum plate on top.



3) Connect the LED Tail Lights to the wiring harness.

Using the Solder Seal Wire Connector Heat Shrink provided with the kit or other type of connector if you want, connect the wires from the LED Tail Lights directly to the wiring harness using the following color code:

- Parking Light = Grey-Red
- Stop Light = Black-Yellow
- Back-Up Light = Grey-Brown
- Turn Signal = Black-White
- Ground = Brown



4) Secure in place the LED Tail Lights.

Put in place the screws provided with the kit to secure the LED Tail Lights on the brackets previously installed.



5) Installation complete.

ADDITIONAL INFORMATION

Removing the LED Lights from the Tail Lights.

Take a flat screwdriver and insert the blade in the small recess at the bottom of the LED Lights then twist gently to pop it out.



Color Coding of the Tail Light Wiring Harness.

Taillight Wiring

Parking Light = Grey-Red

Stop Light = Black-Yellow

Back-Up Light = Grey-Brown

Turn Signal = Black-White

Ground = Brown

