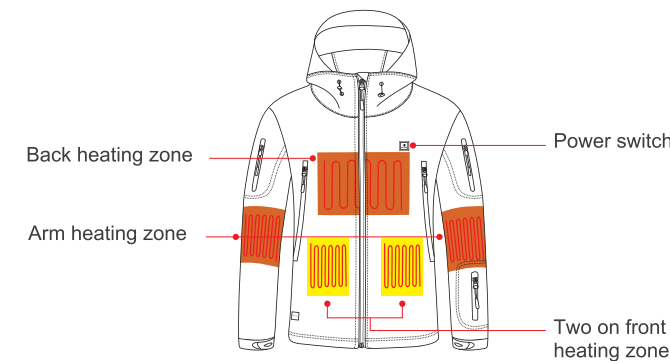


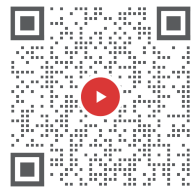
## Thanks for choosing DEWBU!



⚠ The DEWBU 12V heated apparel can only be paired with 12V batteries or can be connected to car cigarette lighter using the DEWBU 12V special cable.

## Let's get your jacket set up

Scan to watch a 30-second video to set up your jacket.



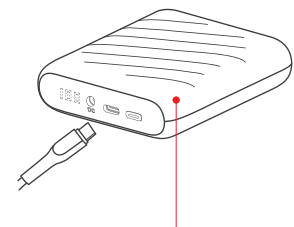
Or



## Follow these steps to set up your jacket

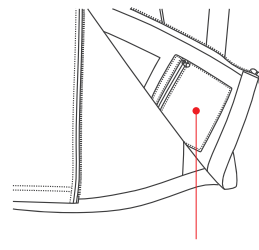
### 1. Charge the battery

Before first use, make sure the battery has enough power by charging it fully, with a 10W charger will take approximately 6 hours, while recharging with an 18W charger will take approximately 3 hours.



### 2. Locate the battery pouch

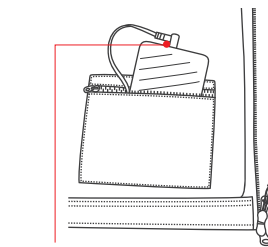
Locate the battery pouch on the jacket, it is located on the liner of the jacket directly beneath the pocket.



## Follow these steps to set up your jacket

### 3. Connect power cable to battery

Insert the metal end of the power cable into the DC outlet located on the top of the battery. Then insert the battery into the built-in battery pouch and zip close the pouch.



### 4. Turn on the power

Turn on the power by pressing and holding the power button located on the left chest of the jacket. The power button should begin to glow red indicating it is in HIGH setting. Press the button again to cycle through different power settings. Press and hold the button to turn power off.



140°F  
HIGH  
Red LED

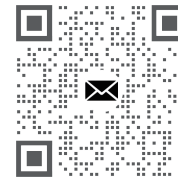


125°F  
MEDIUM  
Blue LED



110°F  
LOW  
Green LED

For additional product support, please visit us at  
[dewbu.com/support](http://dewbu.com/support)



## Cleaning Instructions

- Please disconnect and remove battery before washing. Please do not put the power cable into the pocket and zip up or the cable will be damaged.
- Please do not use bleach. Cleaning solvents may have a deteriorating effect to the insulation of the heating element.
- Please do not wash in high temperature, and suggest you wash it by hand. Please put it into laundry bag before you use laundry machine. (Prevent line pulling damage)
- Hang to dry. Please do not iron, wring, twist, dry clean, or use dry cleaning fluid on apparels.

## Safety Instructions

- Children expectant mothers and cardiac patients should not use.
- Do not use if the garment is wet.
- Do not use it until the garment is completely dry.
- Turn off immediately if you feel discomfort or any annoyance with using the product.
- Do not wear directly onto the skin.
- Please check the skin condition regularly to avoid the low-temperature burn.
- Do not disassemble, remodel and repair by yourselves.

[www.dewbu.com](http://www.dewbu.com)  
E-mail:[Support@dewbu.com](mailto:Support@dewbu.com)

RoHS FC ♻️ CE PSF

Made in China

# DEWBU®

## 12V HEATED APPAREL

SAFETY&INNOVATION

### Quick Start Guide

The related safety warnings and all instructions must be observed, otherwise you may get a shock hazard, fire or serious injury. Before using this product, read manual carefully and keep it for future reference.

### Package List

1x HEATED APPAREL	1x CHARGING CABLE
1x BATTERY	1x INSTRUCTION BOOKLET

12-MONTH WARRANTY

[WWW.DEWBU.COM](http://WWW.DEWBU.COM)