



CLEANLIFE® | Finding a Better Way®

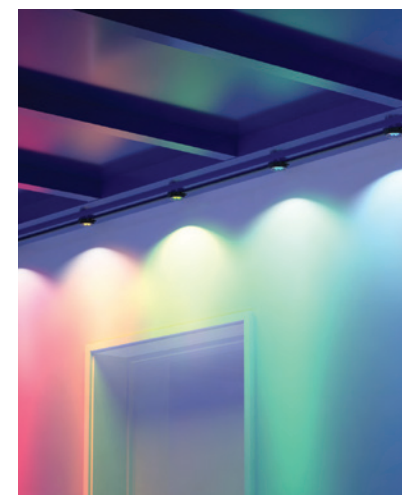
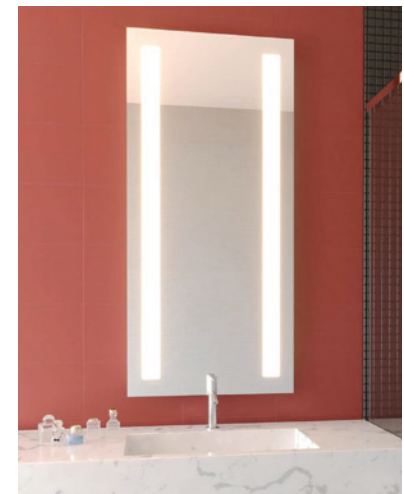
DC-POWERED LED LIGHTING

2024 Low-Voltage Catalog



TABLE OF CONTENTS

Section	Page
Introduction	2
Low-Voltage Wire	3
24V LED Light Bulbs	3
Power Supply Cabinets	4
Low-Voltage LED Drivers	5
Low-Voltage Switches & Dimmers	6
Under-Cabinet & Cove Lighting	7-9
– EzConnect™ LED Light Bars	7
– Free-Cut COB LED Light Strips	8
– Free-Cut SMD LED Light Strips	8
– Smart SMD LED Light Strips	9
OmniFlex LED Faux Neon	10
360° LED Faux Neon with Posts	11
Contemporary LED Pendant	11
Recessed LED Downlights	12
Surface Mount LED Ceiling Lights	13
Decorative LED Ceiling Lights	14-15
LED Vanity Lights	16
Backlit LED Mirrors	17
Low-Voltage Bath Fans	18
Low-Voltage Ceiling Fans	19
Outdoor LED Light Fixtures	20
Smart Outdoor LED Puck Lights	21
Future Low-Voltage Replacements	22



INTRODUCTION

WHAT IS LOW VOLTAGE LIGHTING?

Low voltage lighting, as defined by the National Electrical Code or the NEC, is comprised of Class 2 circuits. Class 2 circuits are power limited to 100 Watts and can be installed using non-hazardous Class 2 wiring methods. This is because they present less of a shock, arc, and fire hazard than traditional higher voltage circuits. According to the ISA (International Society of Automation), "Implementing Class 2 principles with the right devices brings functional benefits, lowers the total installed cost, and improves safety for users and equipment."

WHY 24VDC?

Power over 60 Volts DC is not Class 2 and would be subject to the same requirements as standard 120VAC circuits. Systems with voltages lower than 24VDC (i.e. 12 Volt DC systems) generally have greater power losses in the wiring. Utilization of 24VDC thus provides the benefit of Class 2 standards without having to worry about significant losses during transmission. Additionally, there are already many digital devices used within commercial interiors today that utilize 24VDC power – such as occupancy and daylight sensors.

ADVANTAGES OF A CLASS 2 LIGHTING SYSTEM

In 2019 the US Department of Energy (DOE) released its third report on LED driver reliability. The DOE identified that the first stage of the drivers, where the AC to DC conversion takes place, is where most failures occur. By utilizing a Class 2 distributed DC system, the opportunity for such failures is greatly reduced and increase the probability that the LED light fixture would fulfill its long life potential.

As illustrated in Figure 1, the typical LED installation has four potential failure points, while the Class 2 Distributed DC System has only one. The driver used for the Distributed DC System is constructed more robustly and is usually comprised of much higher quality components vs a traditional LED commodity lighting fixtures.

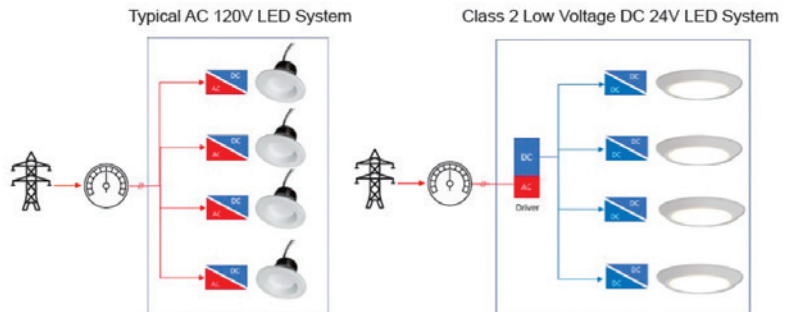
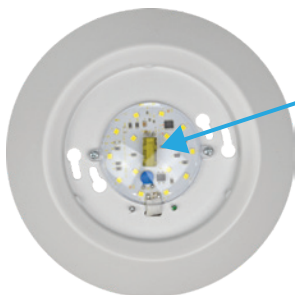
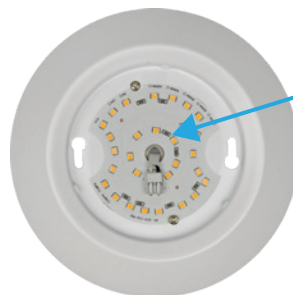


Figure 1: Traditional 120VAC System vs Low-Voltage 24VDC System



120VAC LED Downlight

120VAC LED light fixtures require additional components, including an electrolytic capacitor, to power the LEDs. This is a common failure point and can cause shadowing in the fixture.



24VDC LED Downlight

24VDC LED light fixtures only require LEDs and resistors. The absence of a driver allows for more room on the board for LEDs and eliminates a common failure point in the light fixture.

LOW-VOLTAGE WIRE

SPECIFYING CABLE

It is recommended to use plenum cable for low-voltage lighting installations because it is rated for most in-wall applications. Examples of plenum cable types are CL2P or CL3P cable. This type of designation will be printed on the surface of nonmetallic cable jackets.



18/2 STRANDED NON-SHIELDED PLENUM LOW-VOLTAGE WIRE

MODEL: CL-CBL-CMP-18/2-WH



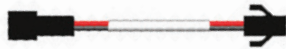
AWG	18 AWG / 7 Strand Bare Copper
Conductors	2
Insulation	PVC - Plenum
Color Code	Black, Red
Jacket	White / Plenum
Nominal Wall	0.013"
Nominal OD	0.162"
Temperature Rating	75°C
Operating Volts	300V

18/3 STRANDED NON-SHIELDED PLENUM LOW-VOLTAGE WIRE

MODEL: CL-CBL-CMP-18/3-WH



AWG	18 AWG / 7 Strand Bare Copper
Conductors	3
Insulation	PVC - Plenum
Color Code	Black, Red, White
Jacket	White / Plenum
Nominal Wall	0.013"
Nominal OD	0.169"
Temperature Rating	75°C
Operating Volts	300V



Custom cut wire, modular systems and connectors available.
Talk to your CLEANLIFE® Representative for more information.

LED LIGHT BULBS

A19 LED BULB

MODEL: CL-LED-24-A19-8WCXXD



8W LED = 60W Equivalent
Clear Glass
E26 Base
CRI >80
24V DC Input
720 Lumens
PWM Dimmable
L70 Lifetime >25,000 hrs.
5-Year Limited Warranty



COLOR TEMPERATURES

2700K

3000K

XX=27

XX=30

California Title 20/JA8 Version Available

ST19 LED BULB

MODEL: CL-LED-24-ST19-8WCXXD



8W LED = 60W Equivalent
Clear Glass
E26 Base
CRI >80
24V DC Input
720 Lumens
PWM Dimmable
L70 Lifetime >25,000 hrs.
5-Year Limited Warranty



COLOR TEMPERATURES

2700K

3000K

XX=27

XX=30

California Title 20/JA8 Version Available

Use our Low-Voltage LED Light Bulbs with any UL Listed Fixture that uses an E26 Socket.*

*Must be wired to a CLEANLIFE® approved Class 2 Low-Voltage 24V LED driver.

POWER SUPPLY CABINETS

Elevate your home with our innovative DC-Power Box!

Designed to endure challenging conditions, you can trust that your home's lighting and fan setups will function seamlessly and effectively for years to come.



- Acts as a central hub to distribute low-voltage DC power for all lighting and fan needs
- Select from various channel options, offering power capacities ranging from 96W to 567W
- Easy access with a latch and key mechanism while ensuring protection



Warranty	5-Year Limited
Certifications	Class 2, Type HL
Enclosure Dimensions	26.3" L x 14.1" W x 2.5" E



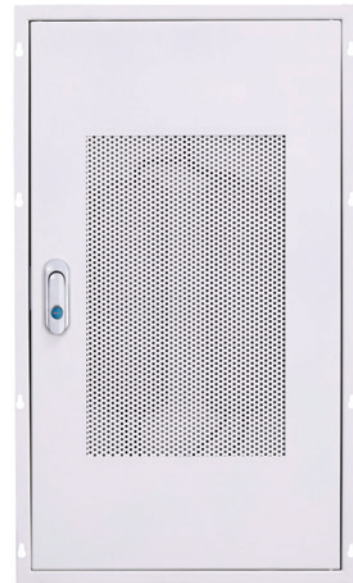
REMOVABLE DOOR



DOOR LOCK



DRIVERS PRE-INSTALLED



Part Number	Channels	Drivers	Total Wattage	Input Voltage	Output Voltage
CL-LVDE-02-04-01	4 x 96W	192W, 192W	384W	100-277VAC	24VDC Constant Voltage
CL-LVDE-02-05-01	5 X 96W	192W, 288W	480W	100-277VAC	24VDC Constant Voltage
CL-LVDE-02-06-01	6 x 96W	288W, 288W	576W	100-277VAC	24VDC Constant Voltage

LOW-VOLTAGE LED DRIVERS

1-CHANNEL CLASS 2 TRIAC DIMMABLE LED DRIVER

MODEL: CL-24096-TDWJV2



Input Voltage	100-277VAC
Output Voltage	24VDC Constant Voltage
Channels	1 x 96W
Total Wattage	96W
Warranty	5-Year Limited
Certifications	Class 2, Type HL
Driver Dimensions	9" L x 2.8" W x 1.7" H
Enclosure Dimensions	15" L x 3" W x 2.2" H

1-CHANNEL CLASS 2 LED DRIVER WITH ENCLOSURE

MODEL: CL-24096-ASWJV2



Input Voltage	100-277VAC
Output Voltage	24VDC Constant Voltage
Channels	1 x 96W
Total Wattage	96W
Warranty	5-Year Limited
Certifications	Class 2, Type HL
Driver Dimensions	9" L x 2.8" W x 1.7" H
Enclosure Dimensions	15" L x 3" W x 2.2" H

2-CHANNEL CLASS 2 LED DRIVER WITH ENCLOSURE

MODEL: CL-C24192-ASWJV2



Input Voltage	100-277VAC
Output Voltage	24VDC Constant Voltage
Channels	2 x 96W
Total Wattage	192W
Warranty	5-Year Limited
Certifications	Class 2, Type HL
Driver Dimensions	10.5" L x 3.1" W x 1.9" H
Enclosure Dimensions	18" L x 3.4" W x 2.4" H

3-CHANNEL CLASS 2 LED DRIVER WITH ENCLOSURE

MODEL: CL-C24288-ASWJV2



Input Voltage	100-277VAC
Output Voltage	24VDC Constant Voltage
Channels	3 x 96W
Total Wattage	288W
Warranty	5-Year Limited
Certifications	Class 2, Type HL
Driver Dimensions	11.9" L x 3.1" W x 1.9" H
Enclosure Dimensions	18" L x 3.4" W x 2.4" H

35W CLASS 2 MEAN WELL DRIVER

MODEL: LPV-35-24



Input Voltage	100-240VAC
Output Voltage	24VDC Constant Voltage
Total Wattage	35W
Warranty	5-Year Limited
Certifications	Class 2, UL-Recognized
Dimensions	5.8" L x 1.6" W x 1.2" H

60W CLASS 2 MEAN WELL DRIVER

MODEL: LPV-60-24



Input Voltage	100-240VAC
Output Voltage	24VDC Constant Voltage
Total Wattage	60W
Warranty	5-Year Limited
Certifications	Class 2, UL-Recognized
Dimensions	6.4" L x 1.7" W x 1.3" H

MEAN WELL DRIVER ENCLOSURE

MODEL: TRC-E-LPV203560



For use with LPV-20, LPV-35, and LPV-60 series models only.

LOW-VOLTAGE SWITCHES & DIMMERS

DO YOU NEED TO SPECIFY SPECIAL SWITCHES OR LIGHTS?

Due to its power limitations, a Class 2 circuit is considered safe from a fire initiation standpoint and provides acceptable protection from electrical shock. Thus, from a regulatory standpoint (UL), there are no safety standards that have been written for low voltage Class 2 switches. No special switches are needed for a Class 2 Distributed DC System. A standard wall switch that is typically rated at 15A, 120VAC can be used. An example of this is the Leviton 56021-2W 3 Amp, 24 Volt AC/DC, Switch Decora Plus Quiet Rocker. CLEANLIFE® also offers a compatible on/off paddle switch along with dimmer options.



Leviton 56021-2W

ON/OFF PADDLE SWITCH WIRELESS DIMMER SWITCH AND MODULE

MODEL: CL-SWCH-1224-1P-01, CL-SWCH-1224-3P-01

MODEL: CL-CLP-WCV-SWITCH

MODEL: CL-CLP-WCV-MOD



COLOR FINISH
White

INPUT VOLTAGE
12~24VDC Constant Voltage

OUTPUT VOLTAGE
12~24VDC Constant Voltage

MAX LOAD
100W



COLOR FINISH
WHITE

POWER SUPPLY
Kinetic Harvesting

FREQUENCY
90 MHz (EnOcean® Protocol)

RANGE
50~150 ft.



FREQUENCY
90 MHz (EnOcean® Protocol)

RANGE
50~150 ft.

INPUT VOLTAGE
8~28VDC Constant Voltage

OUTPUT VOLTAGE
0~28VDC Constant Voltage

MAX LOAD
5A



WIRING OPTIONS
Single Pole, 3-Pole



PWM DIMMER SWITCH AND REMOTE

Part Number	Connection Options	Type
CL-DIM-1224-3P-K-03	3-Way	Dimmer Switch and Remote with Wall Plates
CL-DIM-1224-PWM-3P-03	3-Way	Dimmer Switch with Wall Plate
CL-DIM-RMT-ACC-03	3-Way	Remote with Wall Plate



white face plate included

COLOR FINISH **MAX LOAD** **INPUT VOLTAGE**
White 120W @ 12V, 240W @24V 12~24VDC Constant Voltage



remote with wall plate

dimmer switch with wall plate



UNDER-CABINET & COVE LIGHTING

EZCONNECT™ LED LIGHT BAR

CLEANLIFE® EzConnect™ LED Light Bars are a one-of-a-kind total solution for under-cabinet and decorative applications.

- 24V Constant Voltage Design
- Long Lifetime, L70>100,000 Hours
- High Efficacy up to 100 LPW
- No Glare, Frosted Lens Cover
- Easy Mounting, 3M-Tape Backing
- Daisy Chains with Quick Connectors
- 5-Year Manufacturer's Limited Warranty
- CE, UL, SAM Certified, RoHS Compliant



Cabinet Sizes	Light Bar Size	Light Bar Part Number	Input Voltage	Watts	Lumens	CCT	CRI
12"	9" L x 0.6" W x 0.5" H	CL-CTS24FS02H02J-09T	24VDC	2.5W	250lm	3000K	85
15"	12" L x 0.6" W x 0.5" H	CL-CTS24FS02H02J-12T	24VDC	3W	300lm	3000K	85
18"	15" L x 0.6" W x 0.5" H	CL-CTS24FS02H02J-15T	24VDC	4W	400lm	3000K	85
21"	18" L x 0.6" W x 0.5" H	CL-CTS24FS02H02J-18T	24VDC	5W	500lm	3000K	85
24"	21" L x 0.6" W x 0.5" H	CL-CTS24FS02H02J-21T	24VDC	5.5W	550lm	3000K	85
27"	24" L x 0.6" W x 0.5" H	CL-CTS24FS02H02J-24T	24VDC	6W	600lm	3000K	85
30"	27" L x 0.6" W x 0.5" H	CL-CTS24FS02H02J-27T	24VDC	6.5W	650lm	3000K	85
33"	30" L x 0.6" W x 0.5" H	CL-CTS24FS02H02J-30T	24VDC	7W	700lm	3000K	85
36"	33" L x 0.6" W x 0.5" H	CL-CTS24FS02H02J-33T	24VDC	7.5W	750lm	3000K	85

Custom CCT Options, Light Bar and Wire Length, and Connector Options Available



EZCONNECT™ LIGHT BAR ACCESSORIES

MALE POWER HARNESS

MODEL: CL-HEZVSH-K-3050



FEATURES

- 99" Length
- Male Connector



FEMALE POWER HARNESS

MODEL: CL-HEZVSJ-K-3050



FEATURES

- 99" Length
- Female Connector



JUMPER HARNESS

MODEL: CL-HEZVSHJ-XXX



AVAILABLE LENGTHS

- 6", 12", 18", 24", 30", 36", 42", 48", 60", 72", 84", 96", Custom



BRACKET KIT

MODEL: CL-A-4



KIT INCLUDES

- (2) End Mounting Brackets
- (1) Middle Mounting Bracket
- (6) #7 1/2" Screws

UNDER-CABINET & COVE LIGHTING

FREE-CUT COB LED LIGHT STRIPS

MODEL: TC-TLS24COBXXX



Input Voltage	Wattage	IP Rating	Efficiency	CRI	Width	Max Run
24VDC	5, 10, or 15 W/M	IP67	65lm/W	90+	.40"	197" (5M)

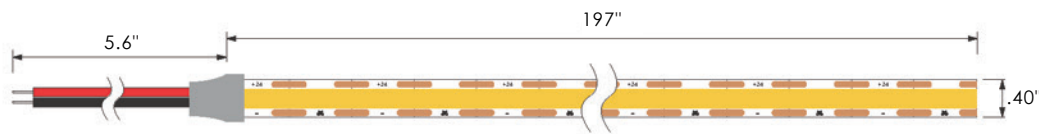
MOUNTING OPTIONS
Adhesive Tape

COLOR TEMPERATURE
3000K
Custom CCT Options Available

WARRANTY
5-Year Limited Warranty
L70 Lifetime >50,000 Hours



DIMENSIONS

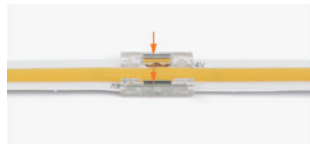


Mounting Clips Available

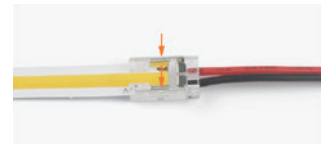
CONNECTOR OPTIONS



Strip to Strip



Strip to Cable



FREE-CUT SMD LED LIGHT STRIPS

MODEL: CL-FLS/24/N/S/150N/000N/90/XX1-5000T



Input Voltage	Wattage	IP Rating	Efficiency	CRI	Width	Max Run
24VDC	12, 14, or 19 W/M	IP20	77, 100, or 92 lm/W	90+	.40"	197" (5M)

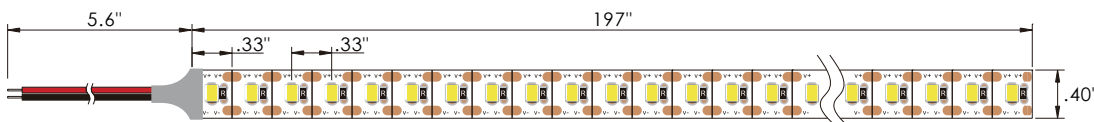
MOUNTING OPTIONS
Adhesive Tape

COLOR TEMPERATURE
3000K
Custom CCT Options Available

WARRANTY
5-Year Limited Warranty
L70 Lifetime >50,000 Hours



DIMENSIONS



Mounting Clips Available

UNDER-CABINET & COVE LIGHTING

SMART SMD LED LIGHT STRIP

MODEL: CL-FLS/24/C/RGBT/5000N/00N/080/30S-5000T-65



CCT	RGB+CCT (2700K-6500K)
Power	30W
Voltage	24VDC
Lumens	3200lm
IP Rating	IP65
Length	5M
Cutting	Every 18 LEDs



SMART LED LIGHT STRIP CONTROLLER

MODEL: CL-SMRT-CTR-01



Bare Wire Connections

CCT	RGB, RGBW, RGB+CCT
Features	WiFi+Bluetooth
Optional Features	Music Sync Function
IP Rating	IP65
Input Voltage	12~24VDC
Max Load	80W Per Channel @ 24V



RGB+CCT JUMPER CABLE

MODEL: CL-WHA-TL6P-150



FEATURES

- 6" Length
- 6 Position

LIGHT STRIP MOUNTING CLIPS

MODEL: CL-A-14



BLUETOOTH REMOTE

MODEL: CL-SMRT-BCR-BK-RGBT-01



Offers full, customizable control over your Smart Controller at the touch of a button.



LED FAUX NEON

OMNIFLEX LED FAUX NEON

MODEL: CL-FLX/M1615/24/F/30/000N300N/90/10-5000N-67



Input Voltage	Wattage	IP Rating	Efficiency	CRI	Width	Max Run
24VDC	10W/M	IP67	70lm/W	90+	.33"	197" (5M)

MOUNTING OPTIONS

Clips or Extrusion

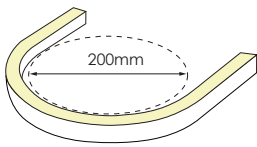
COLOR TEMPERATURE

3000K

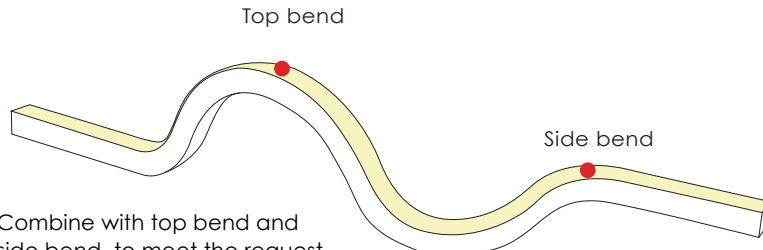
Custom CCT Options Available

WARRANTY

5-Year Limited Warranty
L70 Lifetime >50,000 Hours

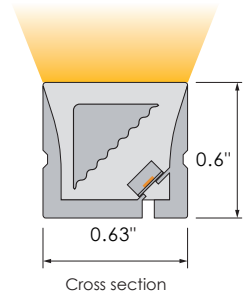
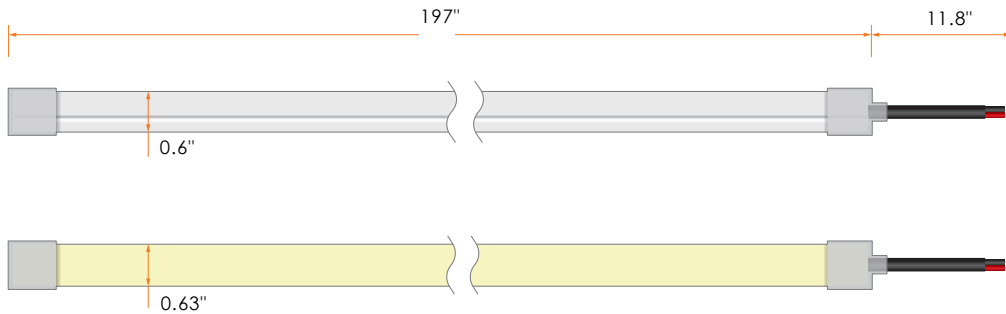


Min bending diameter

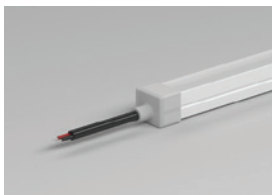


Combine with top bend and side bend, to meet the request of the different space bend.

DIMENSIONS



END CAP OPTIONS



Front Cable Entry



Side Cable Entry

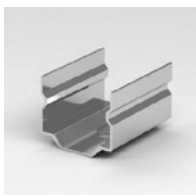


Bottom Cable Entry

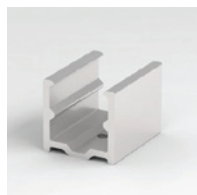


Closed End Cap

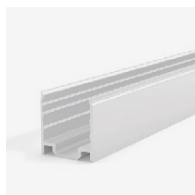
MOUNTING OPTIONS



Mounting Clips



Aluminium Mounting Clips



Aluminium Profile



Curved Profile



Suspension Installation

LED FAUX NEON

360° LED FAUX NEON WITH DECORATIVE MOUNTING POSTS

MODEL: CL-FLX/H25/24/F/XX/000N000N/90/10-1000N-20



Voltage	Wattage	IP Rating	Efficiency	CRI	Width	Max Run
24VDC	10W/M	IP20	34lm/W	90+	.98"	197" (5M)

MOUNTING OPTIONS
Surface Mount Posts

WARRANTY
5-Year Limited Warranty
50,000+ Hour Lifetime

COLOR TEMPERATURE

3000K

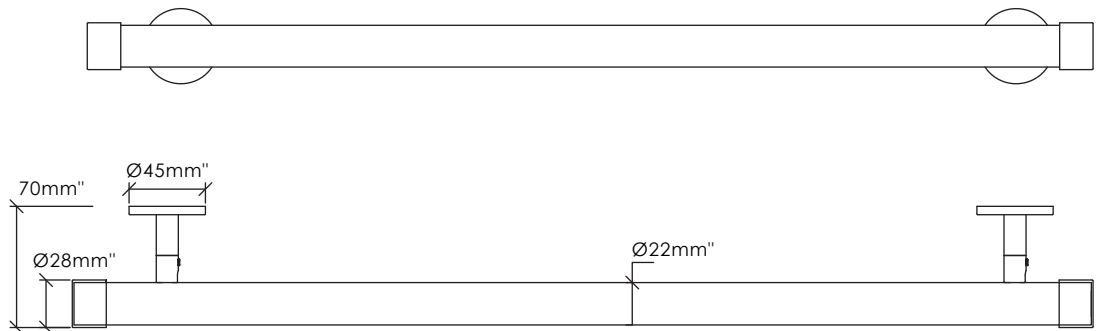
Custom CCT Options Available



MOUNTING HARDWARE



DIMENSIONS



PENDANTS

CONTEMPORARY LED PENDANT



Shown in Brushed Nickel

Part Number	Size	Input		Watts	Lumens	CRI	Dimensions
		Voltage	Watts				
CL-LED-24-CLSP-XX30-01	4"	24VDC	5W	400lm	80+	4" W x 10-5/8" H	

FINISH OPTIONS



COLOR TEMPERATURE

3000K

Custom CCT Options Available



California Title 24 Version Available

WARRANTY

10-Year Limited Warranty
L70 Lifetime >50,000 Hours

RECESSED LED DOWNLIGHTS

DUAL-MOUNT SLIM DOWNLIGHT



Shown in Matte White
Mounting Bracket and Spring Clips Included

Part Number	Size	Input Voltage	Watts	Lumens	CRI	Dimensions
CL-LED-24-DMDL05-XX30-01	5"	24VDC	9W	810lm	80+	Ø 4.8" x 1" H

FINISH OPTIONS



COLOR TEMPERATURE

3000K
Custom CCT Options Available

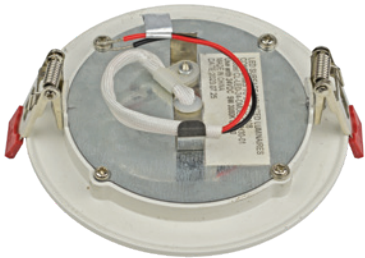


California Title 24 Version Available

WARRANTY

10-Year Limited Warranty
L70 Lifetime >50,000 Hours

SPRING CLIPS FOR MOUNTING PLATE INSTALLATION



Mounting Plate Sold Separately
(Part No. CL-RDMP-01)

MOUNTING BRACKET FOR J-BOX INSTALLATION



J-Box Sold Separately

RECESSED ROUND LED DOWNLIGHT



Shown in White
Mounting Plate Sold Separately
(Part No. CL-RDMP-01)

Part Number	Size	Input Voltage	Watts	Lumens	CRI	Dimensions
CL-LED-24-MDL05-XX30-01	5"	24VDC	10W	700lm	80+	Ø 5" x 1.25" H
CL-LED-24-MDL07-XX30-01	7"	24VDC	15W	1200lm	80+	Ø 6.75" x 1.25" H

FINISH OPTIONS



COLOR TEMPERATURE

3000K
Custom CCT Options Available



California Title 24 Version Available

WARRANTY

10-Year Limited Warranty
L70 Lifetime >50,000 Hours

RECESSED SQUARE LED DOWNLIGHT



Shown in White
Mounting Plate Sold Separately
(Part No. CL-RDMP-01)

Part Number	Size	Input Voltage	Watts	Lumens	CRI	Dimensions
CL-LED-24-RSDL05-XX30-01	5"	24VDC	10W	700lm	80+	5" L x 5" W x 1.8" H
CL-LED-24-RSDL07-XX30-01	7"	24VDC	15W	1200lm	80+	7.5" L x 7.5" W x 1.8" H

FINISH OPTIONS



COLOR TEMPERATURE

3000K
Custom CCT Options Available



California Title 24 Version Available

WARRANTY

10-Year Limited Warranty
L70 Lifetime >50,000 Hours

SURFACE MOUNT LED CEILING LIGHTS

SLIM LED FLUSH DISC LIGHTS



Shown in White

Part Number	Size	Input Voltage	Watts	Lumens	CRI	Dimensions
CL-LED-24-USFM05-XX30-01	6"	24VDC	8W	780lm	80+	5.5" W x 1" H
CL-LED-24-USFM08-XX30-01	8"	24VDC	13W	1085lm	80+	7.8" W x 1.3" H

FINISH OPTIONS



California Title 24 Version Available
Optional O-ring Included for Wet Location

COLOR TEMPERATURE

3000K

Custom CCT Options Available

WARRANTY

10-Year Limited Warranty
L70 Lifetime >50,000 Hours

XL SLIM LED FLUSH DISC LIGHTS



Shown in White

Part Number	Size	Input Voltage	Watts	Lumens	CRI	Dimensions
CL-LED-24-USFM12-XX30-01	12"	24VDC	17W	1100lm	80+	12" W x 1.8" H
CL-LED-24-USFM16-XX30-01	16"	24VDC	30W	2100lm	80+	16" W x 2" H

FINISH OPTIONS



California Title 24 Version Available
Optional O-ring Included for Wet Location

COLOR TEMPERATURE

3000K

Custom CCT Options Available

WARRANTY

10-Year Limited Warranty
L70 Lifetime >50,000 Hours

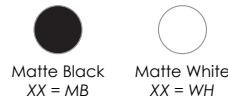
EDGEIT LED ROUND PANEL



Shown in White

Part Number	Size	Input Voltage	Watts	Lumens	CRI	Dimensions
CL-LED-24-RPL05-XX30-01	5"	24VDC	10W	875lm	80+	5.4" W x 0.7" H
CL-LED-24-RPL07-XX30-01	7"	24VDC	12W	1200lm	80+	6.3" W x 0.7" H
CL-LED-24-RPL09-XX30-01	9"	24VDC	15W	1600lm	80+	8.9" W x 0.7" H

FINISH OPTIONS



California Title 24 Version Available

COLOR TEMPERATURE

3000K

Custom CCT Options Available

WARRANTY

10-Year Limited Warranty
L70 Lifetime >50,000 Hours

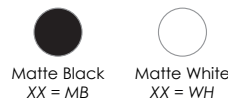
EDGEIT XL LED ROUND PANEL



Shown in White

Part Number	Size	Input Voltage	Watts	Lumens	CRI	Dimensions
CL-LED-24-RPL12-XX30-01	12"	24VDC	25W	1700lm	80+	12" W x 0.7" H

FINISH OPTIONS



California Title 24 Version Available

COLOR TEMPERATURE

3000K

Custom CCT Options Available

WARRANTY

10-Year Limited Warranty
L70 Lifetime >50,000 Hours

DECORATIVE LED CEILING LIGHTS

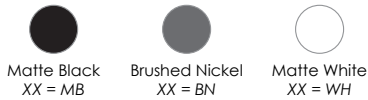
CONTEMPORARY CEILING FIXTURE



Shown in Brushed Nickel

Part Number	Size	Input		Lumens	CRI	Dimensions
		Voltage	Watts			
CL-LED-24-CCF12-XX30-01	12"	24VDC	10W	1360lm	80+	12" W x 3" D
CL-LED-24-CCF14-XX30-01	14"	24VDC	18W	1780lm	80+	14" W x 3.5" D
CL-LED-24-CCF16-XX30-01	16"	24VDC	21W	2200lm	80+	15.75" W x 3.88" H

FINISH OPTIONS



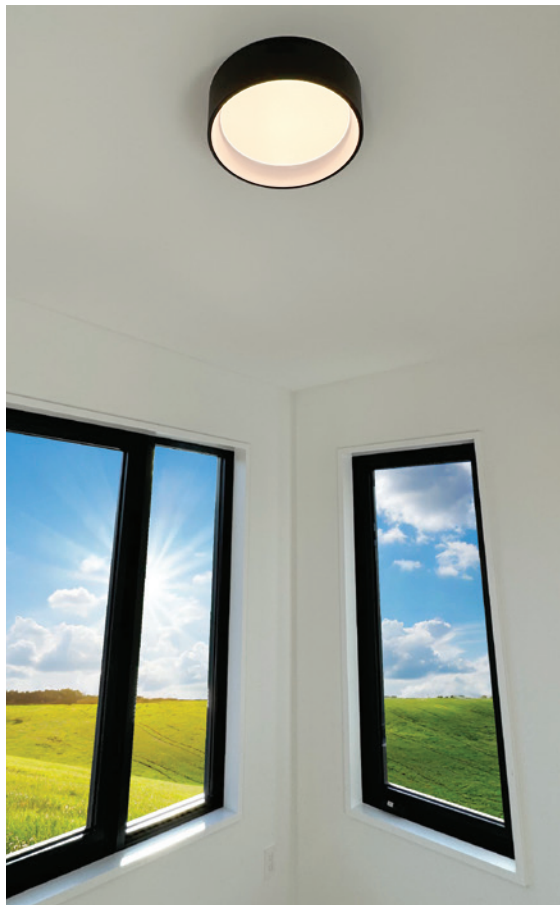
COLOR TEMPERATURE

3000K

Custom CCT Options Available

WARRANTY

10-Year Limited Warranty
L70 Lifetime >50,000 Hours



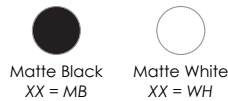
MODERN CEILING FIXTURE



Shown in Matte Black

Part Number	Size	Input		Lumens	CRI	Dimensions
		Voltage	Watts			
CL-LED-24-MFHCF13-MB30	13"	24VDC	25W	1400lm	80+	13" W x 3.9" H

FINISH OPTIONS



COLOR TEMPERATURE

3000K

Custom CCT Options Available



WARRANTY
10-Year Limited Warranty
L70 Lifetime >50,000 Hours

DECORATIVE LED CEILING LIGHTS

TRIMLESS LINEAR LIGHT PANEL



Shown in White

Part Number	Size	Input Voltage	Watts	Lumens	CRI	Dimensions
CL-LED-24-LTDL-XX30	18"	24VDC	17W	1700lm	80+	18" L x 4.7" W x 1.5" H

WARRANTY

10-Year Limited Warranty
L70 Lifetime >50,000 Hours

COLOR TEMPERATURE

3000K

Custom CCT Options Available



California Title 24 Version Available



TRIMLESS EDGELIT CEILING LIGHT



Shown in Matte Black

Part Number	Design Pattern	Size	Input Voltage	Watts	Lumens	CRI	Dimensions
CL-LED-24-ELCL13-XX3050-03	Swirl	13"	24VDC	10W	590lm	80+	13" D x 0.9" H

FINISH OPTIONS



Matte Black
XX = MB



Brushed Nickel
XX = BN



Matte White
XX = WH

COLOR TEMPERATURE

3000K

Custom CCT Options Available

CUSTOM LASER ETCHING AVAILABLE



WARRANTY

10-Year Limited Warranty
L70 Lifetime >50,000 Hours



California Title 24 Version Available

LED VANITY LIGHTS

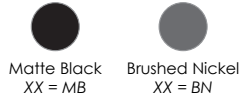
MODERN LED VANITY LIGHT



Shown in Matte Black

Part Number	Size	Input		Lumens	CRI	Dimensions
		Voltage	Watts			
CL-LED-24-UVLB24-XX30-01	24"	24VDC	17W	1690lm	80+	24" L x 5" H x 3" E
CL-LED-24-UVLB36-XX30-01	36"	24VDC	22W	1875lm	80+	36" L x 5" H x 3" E
CL-LED-24-UVLB48-XX30-01	48"	24VDC	28W	3100lm	80+	48" L x 5" H x 3" E

FINISH OPTIONS



Matte Black
XX = MB

Brushed Nickel
XX = BN

COLOR TEMPERATURE

3000K

Custom CCT Options Available

WARRANTY

10-Year Limited Warranty
>100,000 Hour Lifetime



California Title 24 Version Available



CONTEMPORARY LED VANITY LIGHT



Shown in Polished Nickel

Part Number	Size	Input		Lumens	CRI	Dimensions
		Voltage	Watts			
CL-LED-24-CV02-XX30-01	2-Light	24VDC	13W	1050lm	80+	13" L x 7.9" H x 6.3" E
CL-LED-24-CV03-XX30-01	3-Light	24VDC	21W	1600lm	80+	22" L x 7.9" H x 6.3" E

FINISH OPTIONS



Matte Black
XX = MB

Polished Nickel
XX = PN

COLOR TEMPERATURE

3000K

Custom CCT Options Available

WARRANTY

10-Year Limited Warranty
L70 Lifetime >50,000 Hours



California Title 24 Version Available



MODERN LED VANITY LIGHT



Shown in Matte Black
24V Filament LED Bulbs Included

Part Number	Size	Lamp Count	Base	Input		Dimensions
				Voltage		
CL-LED-24-TSVL01-XXZZ	10"	1-Light	E26	24VDC		10" H x 7" E
CL-LED-24-TSVL02-XXZZ	15"	2-Light	E26	24VDC		15" L x 10" H x 7" E
CL-LED-24-TSVL03-XXZZ	24"	3-Light	E26	24VDC		24" L x 10" H x 7" E

FINISH OPTIONS



Matte Black
XX = MB

Brushed Nickel
XX = BN

Brushed Gold
XX = BG

COLOR TEMPERATURES

2700K

3000K

ZZ=27

ZZ=30

Custom CCT Options Available

WARRANTY

10-Year Limited Warranty
L70 Lifetime >25,000 Hours



California Title 24 Version Available

BACKLIT LED MIRRORS

ARGYLE SLIM LED MIRROR



Part Number	Sizes	Input Voltage	Watts	Lumens	CRI
MM-BLM/40/24/30/085/2L-ARG24X36	24" x 36"	24VDC	40W	3400lm	85
MM-BLM/40/24/30/085/2L-ARG30X36	30" x 36"	24VDC	40W	3400lm	85
MM-BLM/44/24/30/085/2L-ARG30X42	30" x 42"	24VDC	44W	3800lm	85
MM-BLM/40/24/30/085/2L-ARG36X42	36" x 42"	24VDC	44W	3800lm	85
MM-BLM/44/24/30/085/2L-ARG60X42	60" x 42"	24VDC	44W	3800lm	85

COLOR TEMPERATURE

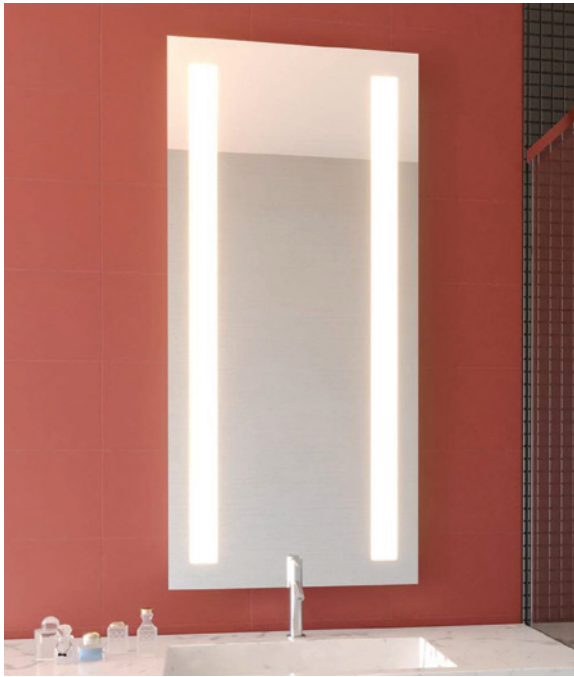
3000K

WARRANTY

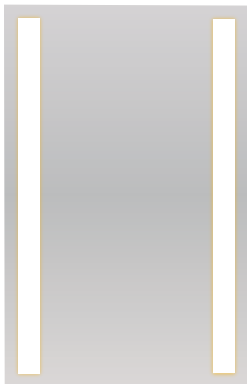
10-Year Limited Warranty
L70 Lifetime >50,000 Hours



California Title 24 Version Available



Curved Glass and Custom Sizes Available



- Lightweight Driverless Design
- Slim, Low Profile, Only 3/4" Thick
- Easy to Mount with Included Cleat



LOW-VOLTAGE BATH FANS

INTEGRATED LED BATH FAN



Shown in White

Part Number	Size	Input Voltage	Light Power	Fan Power	Lumens	CFM	Sones	CRI
CL-LED-24-SBFL-WH30-01	11.3" L x 11.3" W x 6.3" H	24VDC	12W	8W	1150lm	50	0.5	90+

FINISH OPTION



Matte White

COLOR TEMPERATURE

3000K



WARRANTY

5-Year Limited Warranty
>50,000 Hour Lifetime

TRI-SPEED BATH FAN



Shown in White

Part Number	Size	Input Voltage	Fan Power	CFM	Sones
CL-24-STSBF-WH-01	12.6" L x 12.6" W x 6.7" H	24VDC	6W/9W/14W	50/80/110	0.1/0.5/1.0

FINISH OPTION



Matte White

WARRANTY

5-Year Limited Warranty
>50,000 Hour Lifetime



Integrated LED Bath Fan shown with 5" Edgelit LED Surface Mount Round Panel (featured on page 12)

LOW-VOLTAGE CEILING FANS

INTEGRATED LED CEILING FAN



Shown in Brushed Nickel with Round Blades



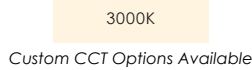
Shown in Matte Black with Square Blades

Part Number	Blade Style	Number of Fan Blades	Input Voltage	Light Power	Fan Power	Lumens	CRI	Dimensions
CL-LED-24-C3BCF-XX30-01	Round	3-Blades	24VDC	17W	20W	1100lm	80+	Ø 50" x 15.3" H
CL-LED-24-C4BCF-XX30-01	Round	4-Blades	24VDC	17W	20W	1100lm	80+	Ø 50" x 15.3" H
CL-LED-24-C5BCF-XX30-01	Round	5-Blades	24VDC	17W	20W	1100lm	80+	Ø 50" x 15.3" H
CL-LED-24-C3BCF-XX30-02	Square	3-Blades	24VDC	17W	20W	1100lm	80+	Ø 52" x 15.3" H
CL-LED-24-C4BCF-XX30-02	Square	4-Blades	24VDC	17W	20W	1100lm	80+	Ø 52" x 15.3" H
CL-LED-24-C5BCF-XX30-02	Square	5-Blades	24VDC	17W	20W	1100lm	80+	Ø 52" x 15.3" H

FINISH OPTIONS



COLOR TEMPERATURE

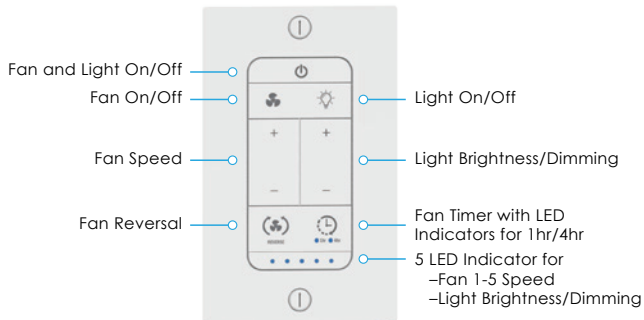


WARRANTY

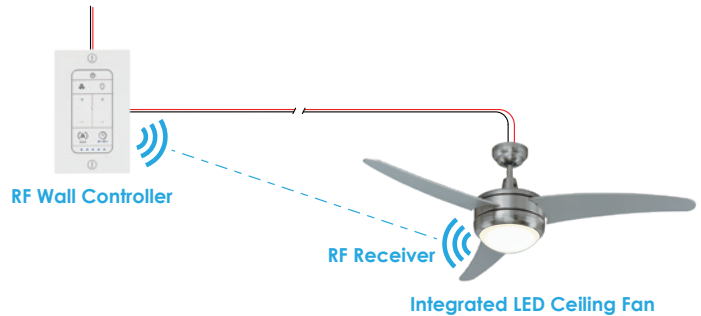
5-Year Limited Warranty
>50,000 Hour Lifetime



WIRELESS WALL CONTROLLER



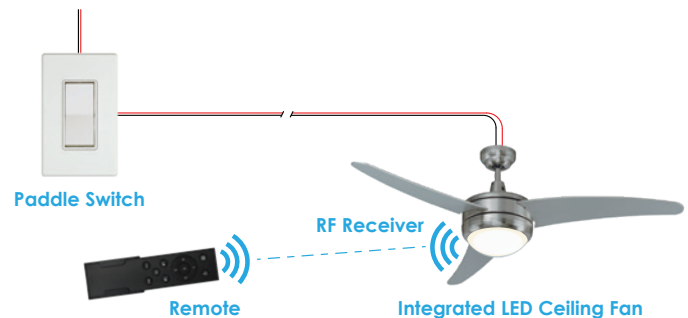
WIRING DIAGRAM FOR WIRELESS WALL CONTROLLER



REMOTE CONTROL



WIRING DIAGRAM FOR REMOTE CONTROL



OUTDOOR LIGHT FIXTURES

MODERN LED OUTDOOR WALL SCONCE (PHOTOCELL OPTION AVAILABLE)



Shown in Matte Black

Part Number	Size	Input		Watts	Lumens	CRI	Photocell	Dimensions
		Voltage	Watts					
CL-LED-24-MOWS08-XX30	8"	24VDC	8W	800lm	80+	No		6" W x 8" H x 3" E
CL-LED-24-MOWS08-XX30 (P)	8"	24VDC	8W	800lm	80+	Yes		6" W x 8" H x 3" E

FINISH OPTIONS



COLOR TEMPERATURE



Custom CCT Options Available

WARRANTY

10-Year Limited Warranty
L70 Lifetime >50,000 Hours



OUTDOOR LED LANTERN (PHOTOCELL OPTION AVAILABLE)



Shown in Matte Black

Part Number	Size	Input		Watts	Lumens	CRI	Photocell	Dimensions
		Voltage	Watts					
CL-LED-24-ODLN10-MB30-01	10"	24VDC	12W	750lm	80+	No		5" W x 10" H x 3.4" E
CL-LED-24-ODLN10-MB30-01 (P)	10"	24VDC	12W	750lm	80+	Yes		5" W x 10" H x 3.4" E

FINISH OPTION



COLOR TEMPERATURE



Custom CCT Options Available

WARRANTY

10-Year Limited Warranty
L70 Lifetime >50,000 Hours



MODERN LED WALL LIGHT



Shown in Matte Black

Part Number	Size	Input		Watts	Lumens	CRI	Photocell	Dimensions
		Voltage	Watts					
CL-LED-24-MWL04-XX30-01	4"	24VDC	15W	1050lm	80+	No		4.3" W x 4.7" H x 6" E
CL-LED-24-MWL04-XX30-01 (P)	4"	24VDC	15W	1050lm	80+	Yes		4.3" W x 4.7" H x 6" E

FINISH OPTIONS



COLOR TEMPERATURE



Custom CCT Options Available

WARRANTY

10-Year Limited Warranty
L70 Lifetime >50,000 Hours



SMART OUTDOOR LED PUCK LIGHTS

24V RGBIC DREAM FULL COLOR OUTDOOR PERMANENT LIGHTING

MODEL: CL-SMRT-UEL40-24-RGBICW-50

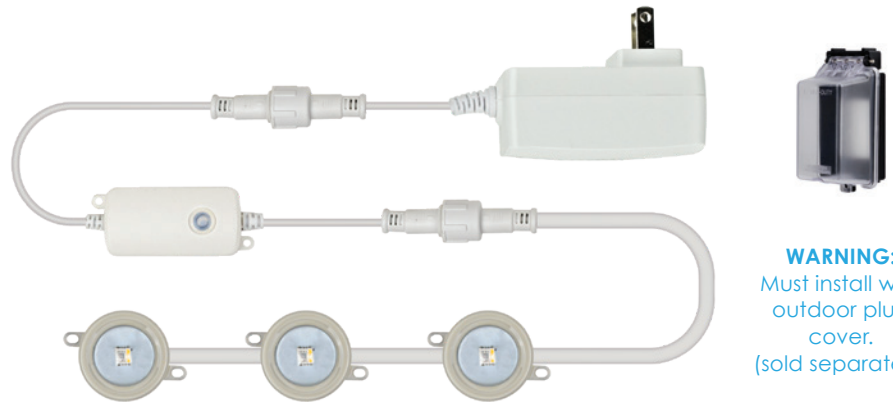


Input Voltage	Wattage	Qty of Pucks	IP Rating	CRI	Width	String Length
24VDC	18W	24	IP67	80+	.12"	45' (15M)
24VDC	22.5W	30	IP67	80+	.12"	45' (15M)
24VDC	27W	36	IP67	80+	.12"	45' (15M)
24VDC	30W	40	IP67	80+	.12"	45' (15M)

MOUNTING OPTIONS
Adhesive and Screws

AVAILABLE COLORS
RGBIC or RGBWIC

WARRANTY
5-Year Limited Warranty
L70 Lifetime >50,000 Hours



WARNING:
Must install with outdoor plug cover. (sold separately)

Control the lights with CLEANLIFE® Smart App or the included remote control.

Add multiple strings to increase length and pair together in CLEANLIFE® Smart App. App can control up to 90 pucks. Ask your CLEANLIFE® representative for more info and custom layouts.



FUTURE LOW-VOLTAGE REPLACEMENTS

Future replacement of your low-voltage fixture is straightforward and easy to accomplish. No electrician is needed for Class 2 installations. There are only two wires that need to be disconnected, typically a **Black** (-) and a **Red** (+). The fixture can then be replaced with any Class 2, 24VDC light fixture. The only limitation is that the new fixture cannot exceed the wattage of the old fixture. This ensures that the new light fixture does not cause the total wattage on the circuit to exceed the maximum power rating.

Figure 2 is an example of a fixture label and what to look for: 1) Ensure that the new fixture has been certified to UL STD 2108; 2) Fixture voltage is 24VDC; 3) Note the wattage rating and do not exceed.

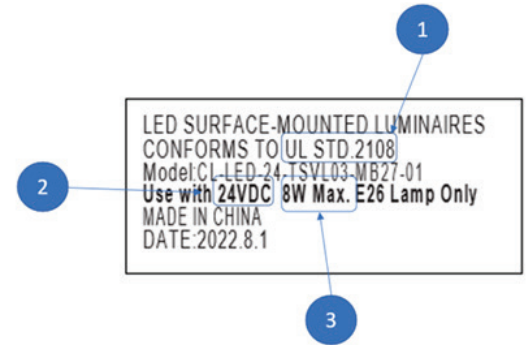


Figure 2: Example Fixture Label



Figure 3: Maximum Wattage Label

A traditional vanity fixture with Edison screw-based sockets (certified to UL 1598) can also be used to replace an existing integrated low voltage LED fixture. The steps involved are similar to the previous steps. Remove the integrated low voltage lighting fixture and look at the label to check the maximum wattage. As an example, in **Figure 3**, the integrated low voltage fixture is 24W. If the replacement fixture is a three-light vanity, such as in **Figure 6**, the maximum wattage per bulb must not exceed 8W ($8 \times 3 = 24W$). Next, wire the new fixture, connecting the **positive** wire from the wall to the **WHITE** wire of the fixture and the **negative** wire from the wall to the **BLACK** wire of the fixture and secure to the wall.



Figure 4: 24VDC Edison Based Light Bulb (Available at CLEANLIFE)

Install the 24VDC filament bulbs to the fixture. Finally, if the bulbs were purchased from CLEANLIFE, a label is included such as shown in Figure 5 below. Affix the label around the socket of the new fixture.



Figure 5: Example Max Wattage Label



Figure 6: 3-Light Vanity (Available at CLEANLIFE)

FEATURES OF A LOW-VOLTAGE LED LIGHTING SYSTEM



**Energy
Efficient**



**Eco
Friendly**



**Cost
Effective**



**Human
Safe**

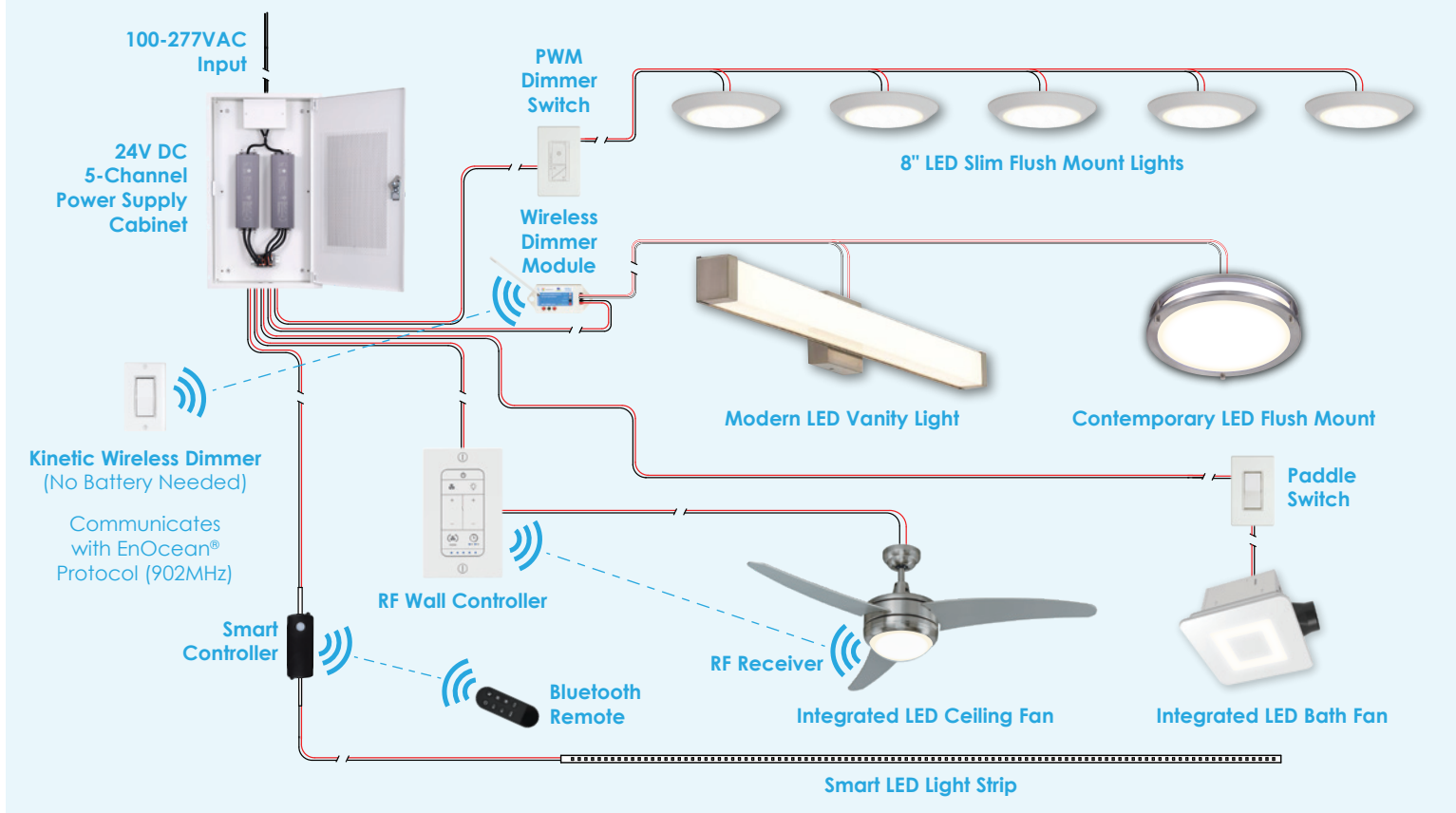


**Long
Lifetime**



**Low Heat
Contributions**

24V DC LOW-VOLTAGE LED LIGHTING SYSTEM EXAMPLE



"The CLEANLIFE® team really want to drive the changes that we are facing in the prefab and building world. They are extremely attentive to new ideas and are pushing the envelope in a similar way that we try to do within our everyday duties. The quality and service CLEANLIFE® has provided is above and beyond anything we've been used to in the past. We couldn't be happier to have CLEANLIFE® as our lighting experts."

- Russ and Kyle, Ohio Builders

CLEANLIFE LLC | 7620 Hub Parkway, Valley View, Ohio 44125, USA
(800) 316-2532 | cleanlife.com | info@cleanlife.com

CLEANLIFE®, Finding a Better Way®, and the Pinwheel Mark are registered trademark of SUPERIOR VENTURES LLC. All Rights Reserved. Not to be reproduced or published without prior permission.