

INSTALLATION INSTRUCTIONS FOR LED LIGHT PANEL WITH INTERANAL DRIVER



MODELS: CL-IDP-12-12-00W-XX-YY-DCD / CL-IDP-12-48-00W-XX-YY-DCD / CL-IDP-24-24-00W-XX-YY-DCD
CL-IDP-24-48-00W-XX-YY-DCD

Thank you for purchasing CLEANLIFE® LED Light Panels.

PLEASE READ CAREFULLY BEFORE INSTALLING LIGHT PANEL.
Save these instructions, as you may need them at a later date.

WARNINGS:

GENERAL: All electrical connections must be in accordance with local and National Electrical Code (N.E.C.) standards. If you are unfamiliar with proper electrical wiring connections, contact and obtain the services of a qualified electrician. Use UL or IEC approved wire only for input/output connections.

Remove light panel and mounting components from the box and make sure that no parts are missing by referencing the photos in the instructions.

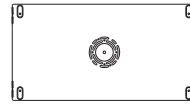
DIMMING: This product is compatible with 0-10V dimmers only!*

*Speak to your CLEANLIFE® sales representative for more information on 0-10V dimmers.

- Turn power off before installation, inspection, or removal. Use all necessary precautions while performing this procedure.
- Properly ground electrical enclosure. IT IS IMPERATIVE THAT THE OUTLET BOX BE PROPERLY GROUNDED.
- For indoor use only.
- Operating temperature: -20°C ~ 50°C, -4°F ~ 122°F. Exceeding the rated operating temperature may damage light panel's lifespan.
- This integrated LED light panel has no lamp/bulb to replace.

STANDARD ACCESSORIES:

1 x MOUNTING PLATE



4 x HURRICANE CLIPS



6 x DRILLING SCREWS



2 x #8 SCREWS



6 x PLASTIC ANCHORS



5 x 3-WAY LEVER NUTS



RECESSED INSTALLATION:

1. SHUT OFF MAIN ELECTRICAL SUPPLY FROM THE MAIN FUSE BOX/CIRCUIT BREAKER!

2. Remove contents from box. Ensure that no parts are missing. (Reference photos in the Standard Accessories section of the manual).

3. Place the LED light panel on top of the drop ceiling.



4. Connect the LED light panel to power as noted below, using the provided lever nuts:

- Connect the Black Wire (AC line) on the fixture to AC Line Wire in the J-box (typically black).
- Connect the White Wire (AC neutral/common) on the fixture to the AC Neutral/Common Wire in the J-box (typically white).
- Connect the Green Wire (ground) on the fixture to the Ground Wire in the J-box (typically green or bare copper).
- If you are **NOT** using a dimmer, finish installation by capping off the Red and Orange Wires on the fixture using a wire nut or lever nut. **If you are using a dimmer, proceed to the next steps.**
- Connect the Red wire (+ dimming wire) on the fixture to the + dimming wire in the J box.
- Connect the Orange Wire (- dimming wire) on the fixture to the - dimming wire in the J box.



5. Once all of the wire connections have been made carefully tuck the wiring back into the J-box and, if applicable, screw the cover back onto the J-box.



6. Affix the four provided hurricane clips to the LED light panel by placing two clips per side on the longest sides of the light panel.

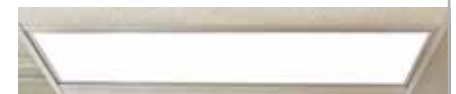


7. Lower the LED light panel into place making sure it is fully seated and flush with the drop ceiling.



8. Restore power at the fuse box/circuit breaker.

9. Installation is complete! Turn on the LED light panel and verify that it is operating correctly.



PLEASE SEE REVERSE FOR SURFACE MOUNTED INSTALLATION. →

SURFACE MOUNTED INSTALLATION:

1. SHUT OFF MAIN ELECTRICAL SUPPLY FROM THE MAIN FUSE BOX/CIRCUIT BREAKER!
2. Remove contents from box. Ensure that no parts are missing. (Reference photos in the Standard Accessories section of the manual).

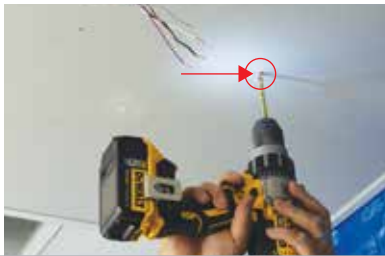
3. Attach the LED light panel mounting plate to the J-box using the two included #8 screws.



4. Verify that the LED light panel mounting plate is straight/in the correct orientation. Then, mark on the ceiling the location of each of the holes that are around the outside of the LED light panel mounting plate. Once the holes are marked, remove the mounting plate from the J-box.



5. Drill holes in the ceiling at each marked location.



6. With the holes drilled, insert one of the provided plastic anchors into each hole.



7. Re-attach the mounting plate to the J-box (Repeat step 3). Align the mounting plate so the holes in the ceiling match up to the holes in the mounting plate. Secure the mounting plate to the ceiling by inserting the provided screws into the plastic anchors.



8. Connect the LED light panel to power as noted below, using the provided lever nuts:



- a. Connect the Black Wire (AC line) on the fixture to AC Line Wire in the J-box (typically black).
- b. Connect the White Wire (AC neutral/common) on the fixture to the AC Neutral/Common Wire in the J-box (typically white).
- c. Connect the Green Wire (ground) on the fixture to the Ground Wire in the J-box (typically green or bare copper).
- d. If you are **NOT** using a dimmer, finish installation by capping off the Red and Orange Wires on the fixture using a wire nut or lever nut.
If you are using a dimmer, proceed to the next steps.
- e. Connect the Red wire (+ dimming wire) on the fixture to the + dimming wire in the J box.
- f. Connect the Orange Wire (- dimming wire) on the fixture to the - dimming wire in the J box.

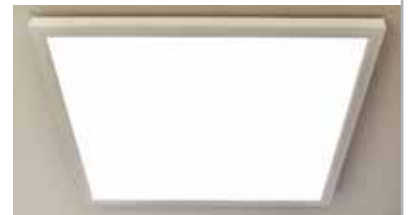
9. Once all of the wire connections have been made, carefully tuck the wiring back into the J-box.

10. Attach the LED light panel to the mounting plate by inserting the hooks on the mounting plate into the slots on the back of the light panel. Once the hooks are inserted, slide the LED light panel until it is securely in place.



11. Restore power at the fuse box/circuit breaker.

12. Installation is complete! Turn on the LED light panel and verify that it is operating correctly.



TROUBLESHOOTING:

- Check that line voltage at light panel is correct.
- Ensure that there is voltage at light panel wires. If there is no voltage, then check all connections.
- Check that light panel is grounded properly.

If light panel does not light:

- Check switch to ensure that there are no defects.
- Check fuse/circuit breaker for trips, then check wiring connections.

CLEANING & MAINTENANCE:


- CAUTION: Ensure light panel temperature is cool enough to touch. DO NOT clean or perform maintenance while light panel is energized.
- Clean lens and light panel with non-abrasive cleaning solution.
 - Do not open light panel to clean LED. Do not touch the LED.
 - Do not spray liquid directly on to LED, LED driver or wiring.

7-YEAR LIMITED WARRANTY:

LIMITED WARRANTY: CLEANLIFE® LED Light Panels with Internal Driver are warranted to be free and clear of defects in materials and workmanship for a period of seven years from the date of purchase. This warranty covers defects in manufacturing discovered while using the product as recommended by the manufacturer and does not apply to failures caused by acts of God or as a result of any abuse, misuse, abnormal use, or use in violation of any applicable standard, code, or instructions for use in installations. If a CLEANLIFE® LED Light Panel with Internal Driver fails due to a defect covered by this warranty, CLEANLIFE® will, at its option, either replace the product or provide a credit equal to the current price CLEANLIFE® charges for the product. To make a warranty claim, retain the failed products and notify a CLEANLIFE® sales representative in writing within thirty (30) days of the failure.



CLEANLIFE ENERGY LLC
2400 Superior Ave. | Cleveland, Ohio 44124
www.cleanlifeled.com

Technical Support Information
 **1-800-316-2532**
Hours: 8:30am - 5:00pm Est (Monday - Friday)