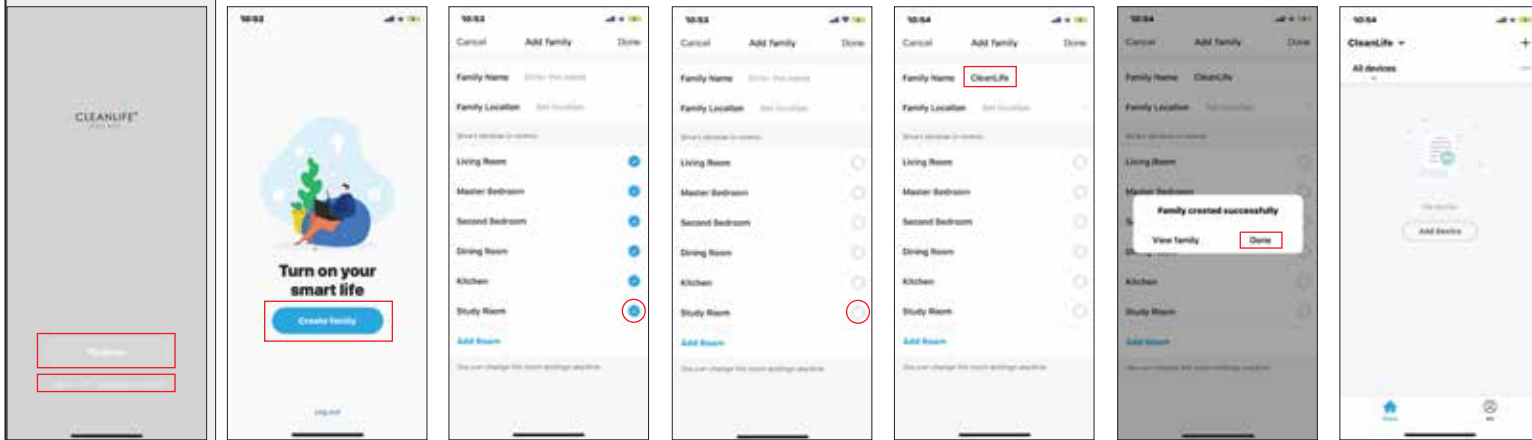


# BLE BLUETOOTH MESH HUB/GATEWAY INSTALLATION INSTRUCTIONS

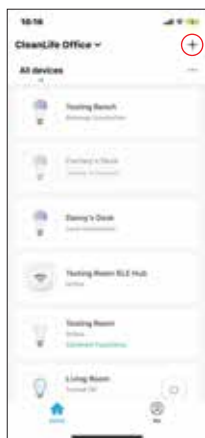
Download the CLEANLIFE® Smart App on the Apple App Store or Google Play Store.

## NEW REGISTRATION PROCESS:

1. Create a new account or login with an existing account.
1. Create a family.
2. Select Rooms (optional).
3. Enter a family name.
4. Select "Done".
5. When you are finished, the App will bring you to the Home Screen.



2. Select the "+" in the upper right corner of the app.



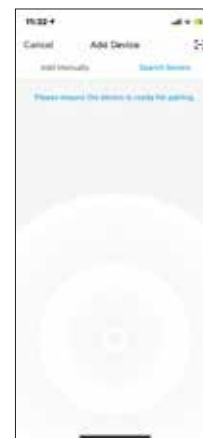
3. Hold down the button on the back of the BLE Hub for 2-5 seconds or until the lights rapidly flash red and blue.



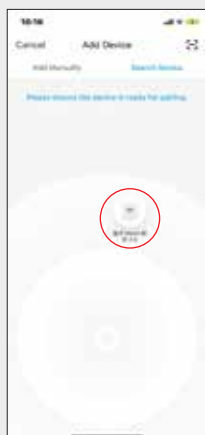
4. Select "Search Device" located next to "Add Manually."



5. Wait for your device to pop up in the area below.



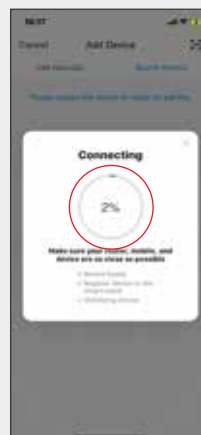
6. Tap on the device.



7. Enter your WiFi Name and Password and then select "OK."



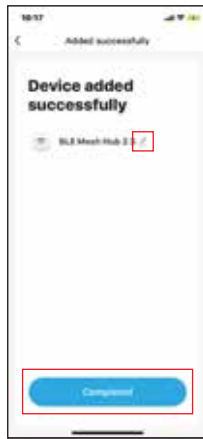
8. Wait for the device to connect. When the circle turns green and shows "100%" in the center, the device successfully connected.



9. Select "Completed" at the bottom.



10. Select "Completed" at the bottom or select "Edit" next to the name of the device.



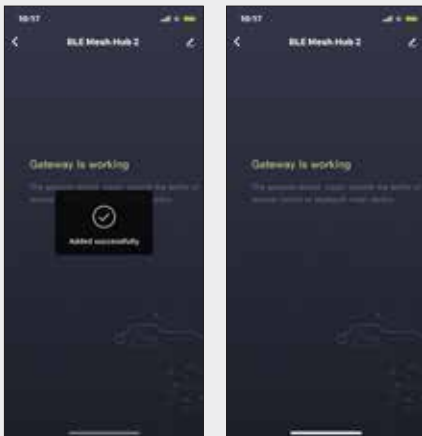
11. Enter your desired name of the device.



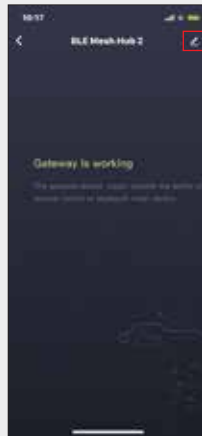
12. When finished select "Completed" at the bottom.



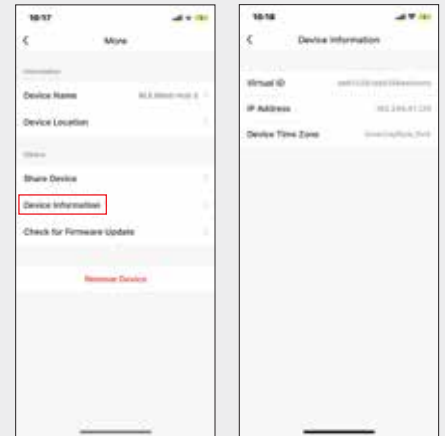
13. After you select "Completed" the App will take you to the device screen.



14. Select the "Edit" button to retrieve device information, change the name of the device, find the device location, check for updates, etc.



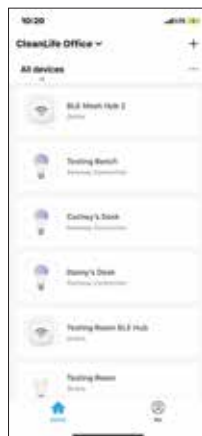
15. Device information



16. Changing device name.



17. After you are finished connecting your BLE Bluetooth Mesh Hub, the device will show up on your home screen. This device allows up to 120 BLE Bluetooth devices to connect to WiFi so that you can control them virtually anywhere.



BLE Bluetooth Hub Includes:

- BLE Bluetooth Hub
- USB Cord

**Does NOT include AC Wall Adapter**



**CLEANLIFE® LED**  
2400 Superior Avenue, Suite 207  
Cleveland, Ohio 44114  
www.cleanlifeled.com

www.cleanlifesmart.com

**Technical Support Information**  
**1-800-316-2532**  
Hours: 8:30am - 5:00pm Est (Monday - Friday)