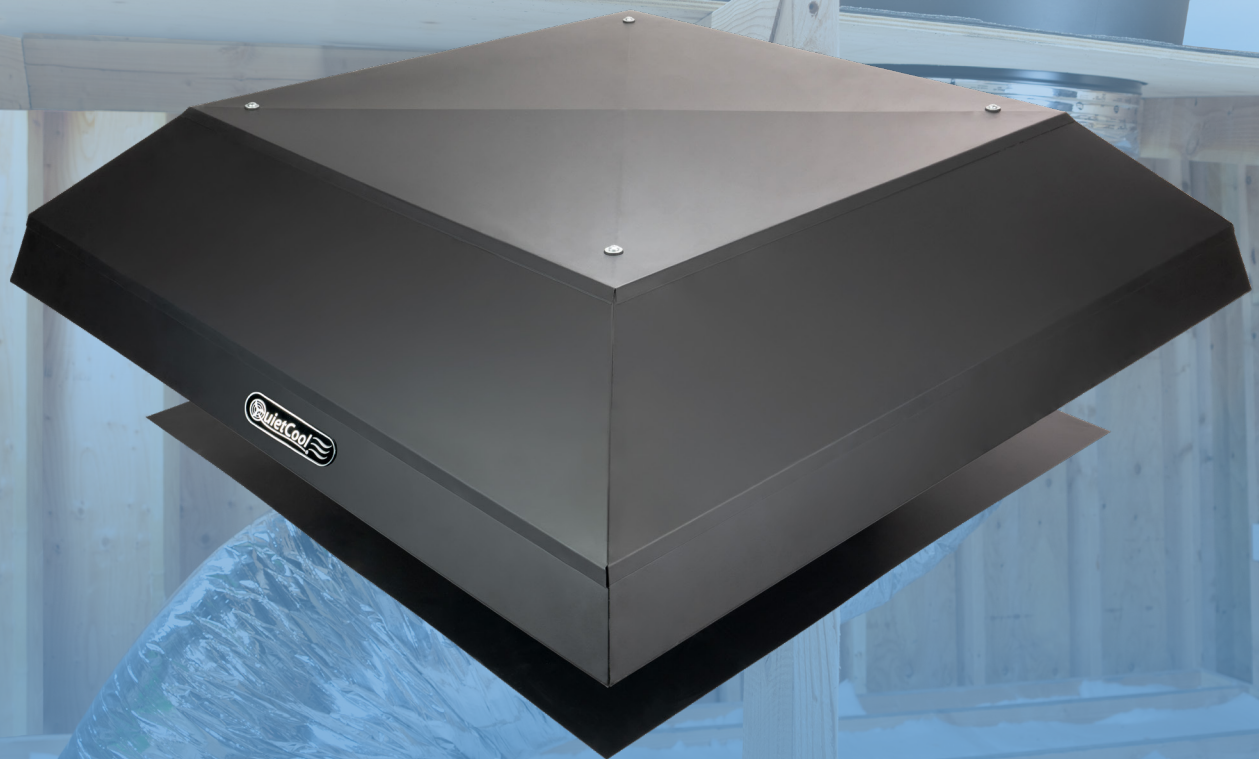




# OWNER'S GUIDE

## ROOF MOUNT WHOLE HOUSE FAN



RM WHF-4.0

**! DO NOT THROW AWAY!**

SERIAL NUMBER FOR FAN IS LOCATED ON THE BACK COVER OF THE OWNER'S GUIDE.

**■ LEAVE WITH HOMEOWNER**

# CONTENTS

1. SYSTEM OVERVIEW	3
1.1 Introduction	3
1.2 Features	3
1.3 Warnings	3
1.4 Getting Started	4
2. INSTALLATION	5
2.1 Installing RM WHF-4.0	5
2.2 Installing RM WHF-4.0-DB	7
2.3 Installing RM WHF-4.0-DG1	8
2.4 Installing RM WHF-4.0-DG2	9
2.5 Installing RM WHF-4.0-PL	9
3. WIRING	11
3.1 RM Whole House Fan Wiring	11
3.2 Fan Hub LED Indicators	12
3.3 Pairing the Wall Switch	13
3.4 Finding a Location for the Wall Switch	13
3.5 Installing the Wall Switch	14
4. SYSTEM OPERATING INSTRUCTIONS	14
4.1 Operating the Wall Switch	14
4.2 Frequently Asked Questions	15
4.3 When to Run	16
4.4 Where to Start Cooling	17
4.5 Indoor Air Quality	17
WARRANTY	19



## QC MANUFACTURING, INC.

26040 YNEZ ROAD  
TEMECULA, CA 92591

**PHONE** 1-888-QUIETCOOL

**WEBSITE** WWW.QUIETCOOLSYSTEMS.COM





# 1. SYSTEM OVERVIEW

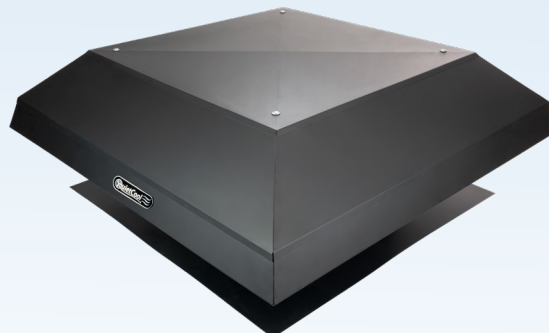
## 1.1 INTRODUCTION

### CONGRATULATIONS

on the purchase of your new QuietCool Roof Mount Whole House Fan!

The QuietCool Roof Mount Fans offer great versatility for any system you are looking to put in. QuietCool Roof Mount Fans can be used in many applications such as a whole house fan with a duct, or as a whole house fan that pulls air through air intake grilles in multiple rooms.

These are typically used in applications where a standard QuietCool whole house fan would not work, such as manufactured homes, homes with a flat roof, or homes with a sealed attic.



## 1.2 FEATURES

- + Ultra-Energy Efficient Electronically Commutated Motor (ECM)
- + Patent Pending
- + Built in USA
- + 15-Year Warranty
- + Included RF Wireless Control Kit

## 1.3 WARNINGS

- ⓘ **CAUTION:** This unit has an unguarded impeller. Do not use in locations readily accessible to people or animals.
- ⓘ **CAUTION:** Do not operate any fan with a damaged cord or plug. Discard fan or return to an authorized service facility for examination and/or repair.
- ⓘ **CAUTION:** Do not run cord under carpeting. Do not cover cord with throw rugs, runners, or similar coverings. Do not route cord under furniture or appliances. Arrange cord away from traffic area and where it will not be tripped over.

## READ BEFORE ATTEMPTING TO INSTALL AN RM FAN GETTING STARTED

ⓘ **NOTE:** Always follow local building codes because the fan may require specific fasteners or anchoring systems not discussed in this installation guide. Installation should be done by a licensed roofing contractor.

### GENERAL SAFETY INFORMATION

1. **READ INSTRUCTIONS** - All safety and operation instructions must be read.
2. **RETAIN INSTRUCTIONS** - The safety and operating instructions should be kept for future reference.
3. **HEED WARNINGS** - All warnings should be followed.
4. **FOLLOW INSTRUCTIONS** - All installation and operating instructions should be followed.
5. **WATER** - The QuietCool system should not be used near water. If you live in a very humid climate, be sure to cover your damper box with insulation to reduce condensation.
6. **HEAT** - The QuietCool system should be situated away from heat sources.
7. **DAMAGE REQUIRING SERVICE** - Only qualified service personnel should service the QuietCool system. The user should not attempt to service the product.
8. **SAFETY PRECAUTIONS** -
  - + Do not install the fan in wet or windy conditions
  - + Tie-off both yourself and your equipment when working on steep pitched roofs to avoid falls
  - + Wear safety glasses and protective gloves when using power tools
  - + Always wear slip-resistant shoes when working on the roof
  - + Do not cut through any rafters or structural members of the roof during installation

### TOOLS YOU WILL NEED

- + Cordless Drill with Nut Driver
- + Roofing Nails
- + Measuring Tape
- + Reciprocating Saw
- + Weatherproof Roofing Grade Sealant
- + Roofing Knife
- + Carpenter Pencil
- + Flashing Material (If Needed)

### CHOOSING THE RIGHT LOCATION

(MAX ROOF PITCH - 9/12)

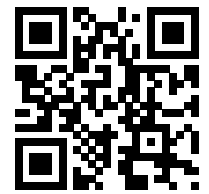
Choose a location to install your QuietCool roof mounted fan that allows for balanced airflow throughout the attic space. We always recommend the fan to be installed centrally located on the roof **three feet below the ridge line**. This will allow you to access the fan very easily. Your roof mount fan should not be installed any closer than **within 5 feet to an existing passive vent, ridge vent, or additional fan unit**.

ⓘ **IMPORTANT:** Do not cut through any rafters or structural members while cutting the fan hole. Only cut out the roof decking.

# 2. INSTALLATION

## 2.1 INSTALLING THE RM WHF-4.0

Installation Video: Watch the video by scanning the QR code or visit [www.QuietCoolSystems.com/support](http://www.QuietCoolSystems.com/support)



- 1. Determine in which area you would like to install your QuietCool Roof Mount Fan (see diagrams below)

**RM WHF Installation Diagrams**

**RM WHF-4.0-DB Installed**

**RM WHF-4.0-DG1 Installed**

**RM WHF-4.0-DG2 Installed**

**RM WHF-4.0-PL Installed**

**ⓘ IMPORTANT:** After choosing the location where your roof mount fan will be installed, find the closest rafter to that location and determine if your roof has either 16" on center or 24" on center rafter spacing. The above diagrams show what rafter spacing and roof joist spacing is required for each installation type.

**ⓘ IMPORTANT:** If you are installing the RM WHF-4.0-PL, skip to section 2.5 on pg. 9.

**ⓘ IMPORTANT:** Before installing the RM WHF-4.0-DB, you will need to find the exact location for your damper box and grille to ensure the duct will fit between the fan location and the damper box location. Locate the ceiling studs and mark the location for the box to be installed. Minimum of 36" clearance required. Make sure the duct will fit between the fan location and the damper box location. The duct is 9' long.

2. From inside the attic, find the center point between the two roof rafters and mark it as the center of the fan hole. Partially insert a screw into the center point mark.

**Ⓢ NOTE:** If you have a tile roof, you will need to move the tiles out of the way before tracing and cutting. (See Figure 2.1A)

3. Go to the roof. Using the screw as a reference point and the provided template, trace out the 22" diameter circle.
4. Use a reciprocating saw to cut out the traced hole pattern from the roof decking. Remove the cut out decking material from around the hole as needed. (See Figure 2.1B)
5. If you have a shingle roof, insert the reciprocating saw sideways between the shingles and roof decking. Starting at the 3 o'clock position of the fan hole, begin cutting in a sweeping motion under the shingles, cutting through any roofing nails or staples. Continue cutting counterclockwise around the fan hole until reaching the 9 o'clock position. Using a roofing knife, cut a 4 inch horizontal slit in the shingles at the 9 o'clock and 3 o'clock positions of the hole, allowing the fan's flashing to slide underneath the shingles.
6. Apply weatherproof material to the roof. (See Figure 2.1C)
7. Position the fan so that it is centered with the fan hole and allow the power cord to hang freely from the bottom of the fan unit. The power cord comes in 20 ft length. (See Figure 2.1D)

**Ⓢ NOTE:** Power cord **CANNOT** be used outdoors.

8. Lifting the fan unit up at an angle, apply weatherproof caulking to the bottom side of the fan unit. This will help keep the fan in place and will seal nice and tight.
9. With all fan cables connected and hanging inside the fan hole, slide the fan unit underneath the shingles until the fan reaches the top of the hole. Secure the fan flashing to the roof. Finish caulking around the fan and flashing it into the roof to make a nice seal. (See Figure 2.1E)
10. If installing on a tile roof, cut tile appropriately and re-install the tile to fit snugly around the fan housing. (See Figure 2.1F)

Figure 2.1A



Figure 2.1B



Figure 2.1C



Figure 2.1D

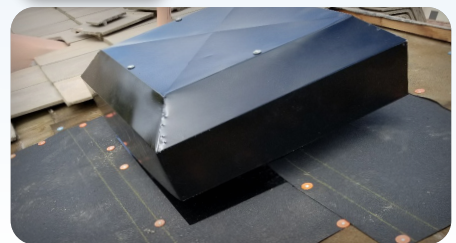


Figure 2.1E



Figure 2.1F



## 2.2 INSTALLING THE RM WHF-4.0-DB

Use the following instructions to finish the installation of your accessory kit.

These instructions are for installing the RM WHF-4.0 with damper box, duct, and grille

1. Using the duct clasp, connect the duct to your fan unit.
2. Determine the location for your damper box. Ensure that the duct will fit with an adequate bend between the fan unit and damper box.
3. Go up into the attic to mark the exact location for the damper box. Take the cardboard cutout template and a small screwdriver with you. Make sure the template fits between the framing.
4. When you have chosen your exact spot, place the provided template on the spot and mark it at each corner by pushing the screwdriver through at each corner to make a hole so that you can find it from below. (See Figure 2.2A & B)
5. From below, place the cutout template on the ceiling, making sure that you have at least 2 inches of clearance all around it. While holding the template in place, mark its outline with a pencil. (See Figure 2.2C)
6. Using a drywall saw or similar device, cut out the hole in the ceiling. (See Figure 2.2D)
7. Go back into the attic and set the damper box over the hole in the ceiling. Using the duct clasp, connect the duct to the damper box. Make sure there are no kinks in the ducting.

**ⓘ NOTE:** The QuietCool Damper Box includes removable flanges in the case that you are installing the damper box between studs that are exactly 16" on center. To remove the flanges, simply take a screwdriver and pry between the flange surface and the damper box. Do this along the entire edge of the flange and it will pop off.

**ⓘ NOTE:** If installing 24" on center, remove one of the longer side flanges and position that side of the damper box against one of the joists.

**ⓘ NOTE:** The damper box flange is designed to sit on the backside of the drywall, inside the attic. Do not attempt to install the damper box with the flanges on the outer side of the drywall in the home.

Figure 2.2A



Figure 2.2B



Figure 2.2C



Figure 2.2D



- Using the included drywall screws, fasten the damper box to the drywall and the joist in the attic. (See Figure 2.2E)

**ⓘ NOTE:** Remember that you must fasten the damper box to the ceiling joists AND drywall. The purpose of this is to make sure the damper box stays in place when you are screwing in the grille. If you do not fasten the damper box to the drywall, the damper box will not stay in place when attempting to screw in the grille. (See Figure 2.2F)

- Remove the removable ceiling grille and screws from its packaging. Center the grille over the damper box. Install the grille with the white screws provided by screwing through the drywall into the flange of the damper box. (See Figure 2.2G)

**ⓘ NOTE:** To remove grille core for cleaning, use the provided grille removal tool in the corners of the grille core. When removing the grille, make sure to hold the core in place so it does not fall. When ready to put your grille core back in place, simply push it right into place, and it will snap in tight.

Figure 2.2E



Figure 2.2F



Figure 2.2G



## 2.3 INSTALLING THE RM WHF-4.0-DG1

Use the following instructions to finish the installation of your accessory kit.

These instructions are for installing the RM WHF-4.0 with 22" x 22" damper grille.

**ⓘ IMPORTANT:** The RM WHF-4.0-DG1 will only fit 24" on center ceiling joists.

- Using a stud finder, find and measure your ceiling joists and determine the location for your damper grille. Make sure the damper grille is installed in the same joist bay as the fan.
- When you have chosen your exact spot, place the provided template on the spot and make sure that you have at least 2 inches of clearance all around it. While holding the template in place, mark its outline with a pencil. (See Figure 2.3A)
- Using a drywall saw or similar device, cut out the hole in the ceiling. (See Figure 2.3B)
- Remove the damper grille and screws from its packaging. Place the grille in the ceiling cutout. Install the grille with the white screws provided by screwing through the drywall. (See Figure 2.3C)



Figure 2.3A



Figure 2.3B

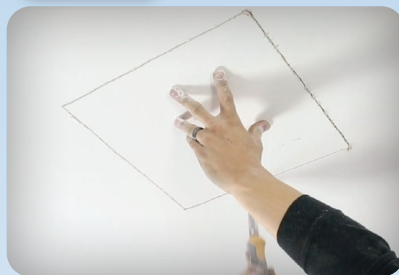
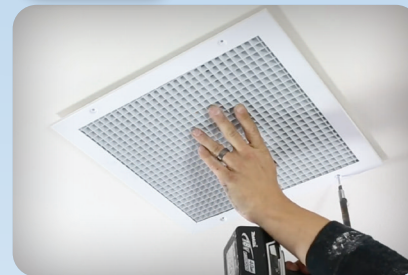


Figure 2.3C



## 2.4 INSTALLING THE RM WHF-4.0-DG2

Use the following instructions to finish the installation of your accessory kit.

These instructions are for installing the RM WHF-4.0 with (2) 16" x 16" damper grilles.

1. Using a stud finder, find and measure your ceiling joists and determine the location for your damper grilles. Make sure the fan is equally centered between the two damper grille locations. Make sure the damper grilles are installed in the same joist bay as the fan.
2. When you have chosen your exact spot, place the provided template on the spot and make sure that you have at least 2 inches of clearance all around it. While holding the template in place, mark its outline with a pencil. (See Figure 2.4A)
3. Using a drywall saw or similar device, cut out the hole in the ceiling. (See Figure 2.4B)
4. Remove the damper grille and screws from its packaging. Place the grille in the ceiling cutout. Install the grille with the white screws provided by screwing through the drywall. (See Figure 2.4C)
5. Repeat steps 2 through 4 for the second damper grille.

Figure 2.4A



Figure 2.4B



Figure 2.4C



## 2.5 INSTALLING THE RM WHF-4.0-PL

Use the following instructions to finish the installation of your accessory kit.

These instructions are for installing the RM WHF-4.0 with Plenum Box and 22" x 22" damper grille.

**ⓘ IMPORTANT:** This installation requires roof rafters that are 24" on center.

1. Once you have determined the location for both the fan and damper grille, use the supplied square template to cut out your roofing and ceiling material for the supplied Plenum Flash Mount and damper grille.
2. Secure the Flash Mount to the roof. Finish caulking around the Flash Mount and flash it into the roof to make a nice seal. Take the plenum box and slide the Flash Mount lip into the plenum box.
3. Make sure the plenum box sits flush to the roof. Using roofing nails, fasten the plenum box to the roof using the six tabs located around the plenum box.

Figure 2.5A



Figure 2.5B

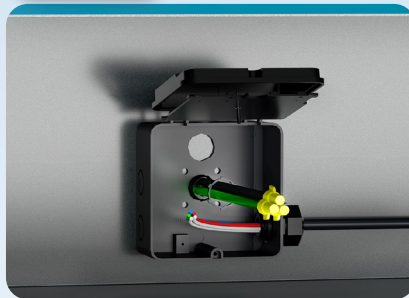


Figure 2.5C



4. Position the fan on its side allowing the RF Control Hub to hang in the circle fan hole in the plenum box. Remove the power cord and RF Control Hub from the fan flex. Run the fan flex into the junction box on the bottom floor of the plenum box. Remove junction box plate cover and tie wires together. Re-install the plate cover.
5. Lifting the fan unit up at an angle, apply weatherproof caulking to the bottom side of the fan unit. This will help keep the fan in place and will seal nice and tight.
6. Position the fan over the circle fan hole in the plenum box. Using the supplied self-tapping screws with rubber-bonded washers, attach the fan unit to the plenum box. Be sure to caulk around the screw head.

**ⓘ IMPORTANT:** If you have drywall on your ceiling, use the supplied template to cut out your grille hole. If you have open ceiling rafters with no drywall, you will need to frame in the grille. (See Figure 2.5D)

7. Run your electrical piping or seal tight flex into the half inch knockout in the plenum box. From inside the home, mount the RF Control Hub into the half inch knockout in the plenum box. Bring your electrical wires into the backside of the RF Control Hub (See Figure 2.5B). Slide your lock nut over the wires and thread it onto the 1/2" flex connector to secure the RF Control Hub to the plenum box. Bring the fan wires from the harness inside the plenum box into the RF Control Hub (See Figure 2.5C).
8. Follow the wiring instructions on page 11 to wire your RF Control Hub to the power source.

Figure 2.5D



Figure 2.5E



9. Remove the damper grille and screws from its packaging. Place the grille in the cutout. Install the grille with the white screws provided. (See Figure 2.5E)

## 3. WIRING

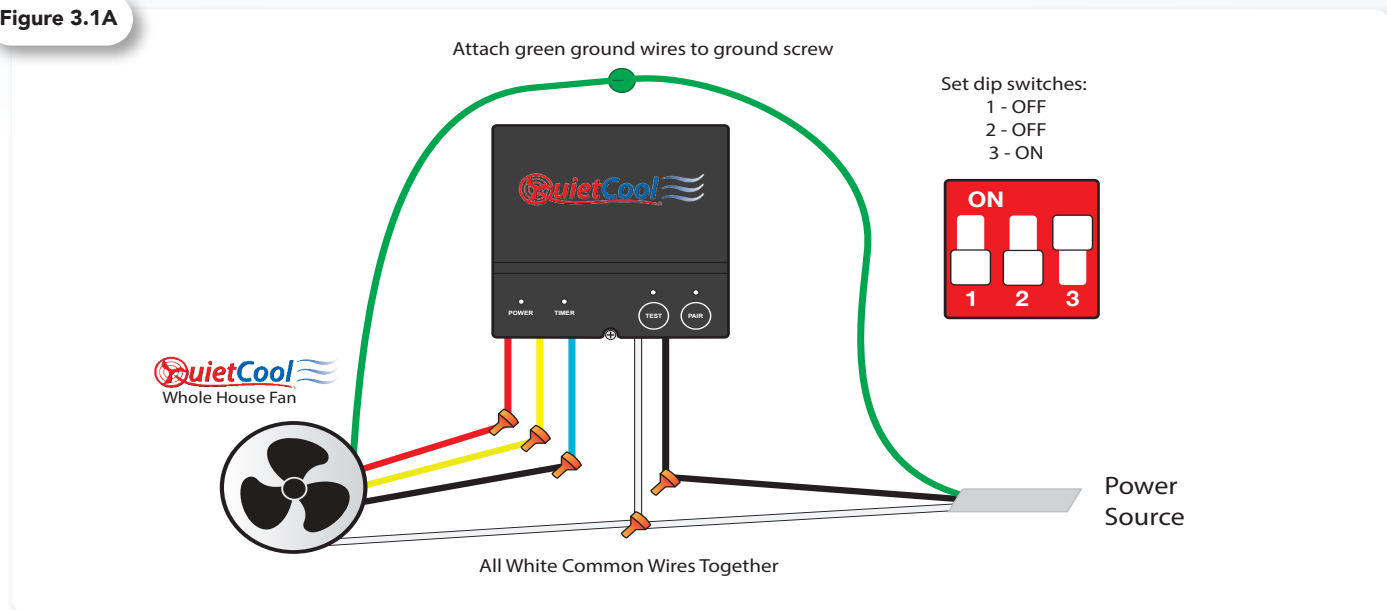
**NOTE:** Wiring Diagrams are for examples ONLY. Wiring should be done by an experienced electrician.

**NOTE:** Your fan came with the RF Hub pre-wired to a power cord for testing purposes before installation. The power cord can be used when installed inside of an attic. **DO NOT USE THE POWER CORD OUTDOORS.** If you would like to hard-wire the fan, or it is required by your local building codes, please follow the wiring instructions below.

### 3.1 ROOF MOUNT WHOLE HOUSE FAN WITH RF CONTROL

1. Using a wire nut, connect the black wire from the power source to the black wire from the Hub.
2. Connect the white wire from the power source and the white wire on the fan to the white wire from the Hub.
3. Connect the red wire from the fan to the red wire on the Hub
4. Connect the yellow wire from the fan to the yellow wire on the Hub
5. Connect the black wire from the fan to the blue wire on the Hub
6. Ground the green wire from the fan and the ground wire from the power source to the ground screw in the Hub.
7. Set the dip switch positions inside the Hub as shown in the diagram.

Figure 3.1A



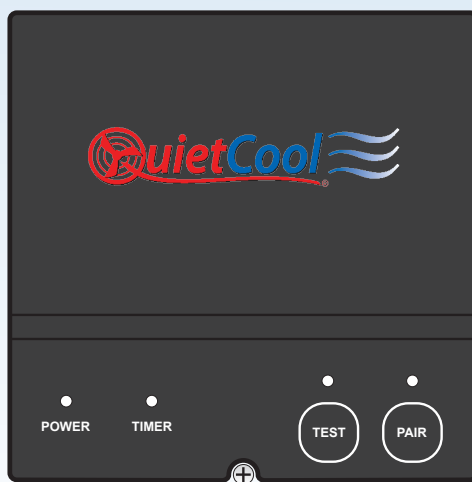
8. Power-on the Hub. The Power LED indicator will be lit.

9. Press the Test button to make sure the fan works. The Test LED indicator will blink three times every two seconds indicating 3-speed and the fan will be on high. Press the Test button again and the fan will switch to medium speed. Press the Test button again and the fan will switch to low speed. Press the Test button again and the fan should shut off and the LED will be off.
10. If the fan doesn't operate as described in step 9, please check the dip switch position.
11. You can connect up to 20 switches to a single hub.

## 3.2 FAN HUB LED INDICATORS

### POWER INDICATOR

- The Power LED indicator will always be lit when the Hub is connected to Power.
- If this LED is not lit, check the power source



### TEST INDICATOR

- The Test LED indicator will light up as shown below when the Test button is pressed and when the fan is turned on via the Wall Switch:
- High Speed: LED indicator will blink three times every two seconds
- Medium Speed: LED indicator will blink twice every two seconds
- Low Speed: LED indicator will blink once every two seconds

### TIMER INDICATOR

- The Timer LED indicator will light up as shown below:
  - 1 Hour: 1 Blink
  - 2 Hours: 2 Blinks
  - 4 Hours: 4 Blinks
  - 8 Hours: 8 Blinks
  - 12 Hours: 12 Blinks
  - Continuous On: Off

### PAIR INDICATOR

- The Pair LED indicator will light up when making pair operations. Please see below for details on pairing.

### NOTES ON OPERATION

- If the Dip Switch is not configured correctly, all the indicators on the Hub will stay solid when the Hub is powered on. Please switch off power and re-configure the Dip Switch as shown in Figure 3.1A on pg. 11.

### 3.3 PAIRING THE WALL SWITCH

1. Using a flat-head screwdriver, remove the front cover off the wall switch.
2. Install the included AAA batteries into the switch. All the LED indicators will light up indicating that the switch has power. Replace the front cover.
3. Press and hold the Pair button on the Hub. The Pair LED indicator will be on for three seconds then turn off. This clears all previous pairings out of the Hub,
4. Press the Pair button on the Hub twice. The Pair LED indicator will blink once every second indicating the Hub is in pairing mode.
5. Press either one of the buttons on the Wall Switch to wake it up. Now hold one of the buttons on the switch. The Pair LED indicator on the Hub will go out and the Wall Switch speed indicators will be blinking indicating successful pairing. Press the Wall Switch button again, the speed indicators will go out, and it will display the current fan status.

Press the Timer button to test the Wall Switch to make sure it is communicating with the Hub.

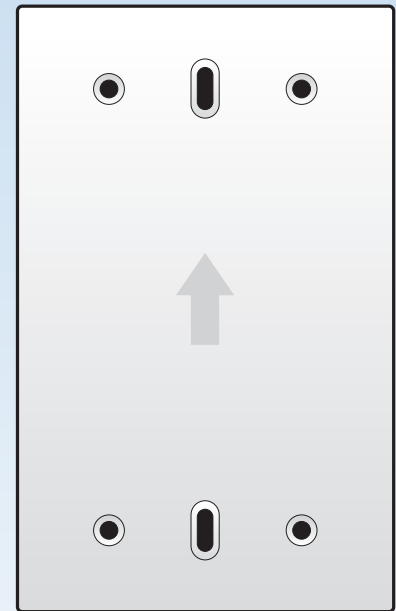
**ⓘ NOTE:** If a button on the Wall Switch is not pressed within three minutes of pressing the Pair button on the Hub, the LED indicator on the Hub will go out, indicating unsuccessful pairing. You will need to go back and repeat steps 4 and 5.

### 3.4 FINDING A LOCATION FOR THE WALL SWITCH

1. It is very important to find the correct location to install the Wall Switch that will allow the Wall Switch to communicate with the Hub.
2. Find the location you would like to install the Wall Switch and test that it properly communicates with the fan to turn the fan on and off.
3. If the fan comes on, this is a good location.
4. If all the LED indicators turn on, the Wall Switch is not communicating with the Hub and you will need to find a location closer to the fan.

### 3.5 INSTALLING THE WALL SWITCH

1. Using your hands, slide the Wall Switch off the mounting plate.
2. If you have an existing Wall Switch with a junction box installed, install the mounting plate over the junction box using the oblong holes on the mounting plate. Make sure you install the mounting plate with the arrow facing upwards.
3. If you do not have an existing junction box, simply install the mounting plate to the drywall. Using the included drywall anchors and screws, mount the plate onto the drywall through the four mounting holes.



## 4. SYSTEM OPERATING INSTRUCTIONS

### 4.1 OPERATING THE WALL SWITCH

#### TIMER BUTTON

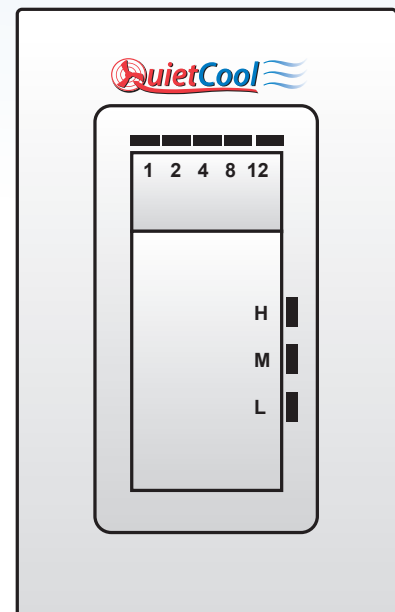
- The top button on the switch controls the Timer functionality of the fan.
- This button must be pressed for the fan to turn on.
- To turn the fan off, you must cycle through the time settings until the lights turn off.

#### SPEED BUTTON

- The bottom button on the switch controls the speed functionality of the fan.

#### WALL SWITCH SLEEP MODE

- If no button press is detected for 10 seconds, the Wall Switch will enter sleep mode. Pressing either button will wake the switch and display the current status.
- In Sleep Mode, all LED indicators will be off.



## LED STATUS INDICATORS OF WALL SWITCH

- If all LED indicators on the Wall Switch come on after three seconds of pressing one of the buttons, this means the Wall Switch is failing to connect to the Hub. You will need to move the switch closer to the Hub to ensure proper communication.
- If all the Timer LED indicators are off and one of the Speed LED indicators are on, this means you have not set the time for the fan to run and the fan will not operate. Simply press the Timer button to turn the fan on and set the fan runtime.
- If only one of the Timer LED indicators is on and only one of the Speed LED indicators is on, the fan is running at the indicated speed and timer level.
- If all the Timer LED indicators are on and only one of the Speed LED indicators are on, the fan is running in Continuous On mode at the indicated speed level. The fan will continue to run until you press the Timer button to turn it off.

## NOTE ON OPERATION

- In order for the fan to run, a Timer selection **MUST** be made. When the Timer status is off (no LED indicators lit), you can still change the Speed setting. The Speed setting will take effect once the Timer selection is made.

## 4.2 FREQUENTLY ASKED QUESTIONS

### WHAT DOES RF MEAN?

“RF” Stands for Radio Frequency.

### HOW DOES RF WORK?

A small electronic device is used to transmit and/or receive radio signals between two devices. In an embedded system, it often communicates with another device wirelessly. This wireless communication may be accomplished through optical communication or through radio frequency (RF) communication.

### WILL RF INTERFERE WITH OTHER DEVICES IN MY HOME?

The RF will not interfere with other wireless or RF devices in your house. It produces its own unique RF signal that can only communicate with our RF Switch.

### HOW MANY SWITCHES CAN YOU CONNECT TO A SINGLE HUB?

You can connect up to 20 switches to a single hub.

### WILL MY NEIGHBOR BE ABLE TO CONTROL MY FAN IF THEY HAVE THE SAME SET UP AS ME?

They will not because you need to physically activate the pairing process between the RF Switch and the RF Hub.

### **WHAT IS THE RANGE?**

The RF Switch and RF Hub have a range restriction of 100ft.

### **WHAT HAPPENS IF I LOSE THE RF SWITCH?**

If you lose or damage an RF Switch you will need to purchase another and re-pair the new one to the RF Hub.

### **CAN YOU CONTROL MULTIPLE FANS WITH A SINGLE SWITCH?**

No. You can only control one RF Hub per switch.

### **HOW LONG DO THE BATTERIES LAST?**

Up-to one year.

### **WHY ARE ALL MY LIGHTS SOLID ON THE HUB AND NOTHING IS WORKING?**

If you're experiencing solid lights on the hub then it is an indication that your DIP switches are not in the correct position. Disconnect power, adjust your DIP switches, and the only light that should be lit is your RED power light.

### **HOW DO I CHANGE THE DIP SWITCH TO THE CORRECT SPEED OF MY FAN?**

You will need to disconnect power, make your adjustment inside the hub, and then reconnect power.

### **CAN YOU CONNECT THE RF CONTROL TO A SMART HOME SYSTEM LIKE ALEXA, GOOGLE HOME, OR APPLE HOMEKIT?**

No, in the current configuration the RF Control cannot connect to a smart home system. There are systems on the market that take RF signal and translate them to a smart home system, but they have not been tested and may not work reliably.

## **4.3 WHEN TO RUN A QUIETCOOL WHOLE HOUSE FAN**

Anytime it is cooler outside than the inside of your home, the system will work effectively. In the summer this normally happens in the late afternoon to early evening, through to the next morning. We recommend running your fan through the evening. If you have a multi-speed fan, you will get the best cooling effect when you turn the fan on low after desired cooling occurs and let it run throughout the night.

QuietCool can also be used in the winter to heat your home during the day and exhaust the pollutants inside your home.



## 4.4 WHERE TO START COOLING THE HOME

We recommend cooling the area where you are going to be spending the most time for the next few hours. For example, in most family situations, the early evening is spent in the kitchen or family room area. Assuming this to be true, this is where you would want to start the cooling process.

Begin by opening a **few windows** in the area you are going to be spending your time and turn on all of your QuietCool fans at once, for maximum cooling. The cooler air outside will immediately begin to create a breeze in the home making you feel up to 10 degrees cooler, instantly. Opening windows too wide or opening too many windows will lessen the cooling breeze you feel.

The breeze will flow through your home and make its way to each QuietCool you have in operation.

As it gets later in the evening, and even cooler outside, you can begin to open windows in other rooms of your home, to prepare for bedtime. Then when it's time for bed, you should close all the windows in your main living space, but leave the windows in your occupied bedrooms open. This will provide each room with a cool breeze as long as desired. If you are using an 8 hour timer, you can automate your fan and have it turn off when you anticipate it being comfortable for sleeping. If you have a QuietCool installed in each bedroom as we recommend, you can enjoy the breeze and your privacy with your door closed.

## 4.5 INDOOR AIR QUALITY

You will want to ventilate your home on a very regular basis. Many studies such as one from the Environmental Protection Agency show that the air inside homes can be 2-5 times more polluted than the air outside, even in the smoggiest of cities. Your QuietCool system can greatly reduce this problem by bringing in fresh air and exhausting stale polluted air all year round.

If you have any trouble installing or operating your new QuietCool Whole House Fan, or for more tips on running the QuietCool, please visit our website at [www.QuietCoolSystems.com](http://www.QuietCoolSystems.com) or call us at **(951) 325-6340** for support.

**QUIETCOOL IS PROUDLY DESIGNED AND BUILT IN CALIFORNIA.**

# QUIETCOOL

## REFERRAL PROGRAM

Our referral program is unlimited;

This means you can refer as many people as you like. Best of all, both you and your friend will earn \$25 for each whole house fan that your friend installs.

**[QuietCoolSystems.com/referrals](https://QuietCoolSystems.com/referrals)**



## WHOLE HOUSE FANS LIMITED WARRANTY

QC Manufacturing Inc. extends this warranty to the original purchaser of the following QuietCool Whole House Fan - RM WHF-4.0 - installed and used in a residence under normal conditions within the United States:

- A. Ten year coverage applies to the QuietCool motor fan assembly. At our option we will repair or replace any part of the assembly should it fail to operate during the first ten years from the date of original purchase.
- B. One year coverage for all other components including grilles, housings, controls and accessories furnished by QC Manufacturing, Inc. At our option we will repair or replace any part which fails as a result of defective material or workmanship during the first year from the original date of purchase.
- C. This warranty does not cover any of the following:
  - 1. Accidental or consequential damage resulting from the operation of our equipment or any malfunction thereof.
  - 2. Cost of service calls to diagnose the cause of problems or the labor charge to un-install any components.
  - 3. Product failure or damage due to faulty installation, abuse, misuse, unauthorized alteration to factory specs, lack of maintenance, or transportation damage.
  - 4. Shipping or postage for warranty claims.
- D. To obtain service under this warranty, first contact the dealer where you purchased the equipment. If you are unable to find or reach your dealer, contact Customer Service at QC Manufacturing, Inc. at the number below.
- E. Registration is no longer required for QuietCool fans. If service is required under this warranty, you must retain your proof of purchase.

This warranty is the only warranty extended by QC Manufacturing, Inc. to purchasers or suppliers of our equipment. QC Manufacturing Inc. disclaims all other warranties, express or implied, that arise by operation of the law. Where consumer may have additional warranty rights in accordance with federal and state law, such rights shall supersede those stated herein.

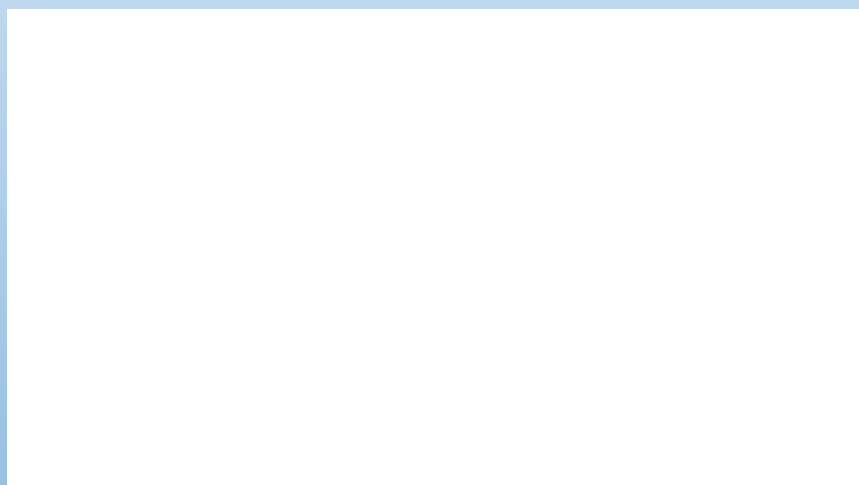
### QC Manufacturing, Inc. Customer Service

26040 Ynez Rd.  
Temecula, CA 92591  
[www.QuietCoolSystems.com](http://www.QuietCoolSystems.com)  
951-325-6340



MAKERS OF THE QUIETCOOL ADVANCED WHOLE HOUSE FAN

## FAN SERIAL NUMBER INFORMATION



**RETAIN FOR YOUR RECORDS.**

SERIAL NUMBER IS REQUIRED FOR WARRANTY PURPOSES.