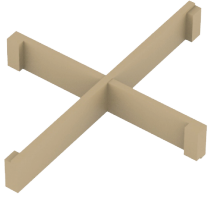


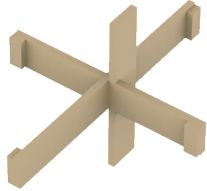
# 3-N-1 WOOD PLYOBOX

## ASSEMBLY GUIDE

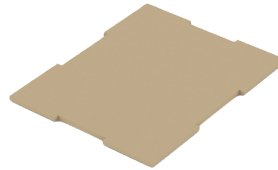
---



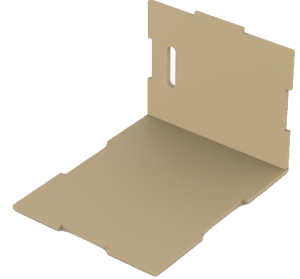
Connect the 24" & 30" crossmembers together.



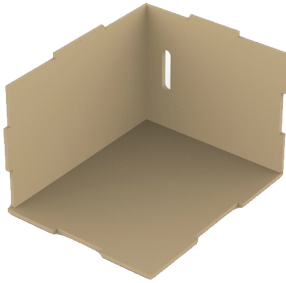
Place the 20" crossmember onto the 24" crossmember then secure it to the 30".



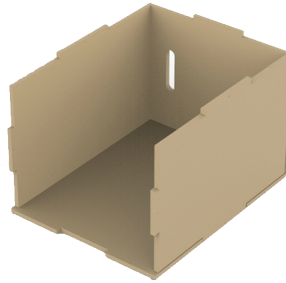
In this example we start with a 24x30 side.



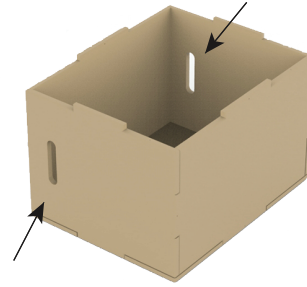
Connect the corresponding 20x24 side and secure them together.



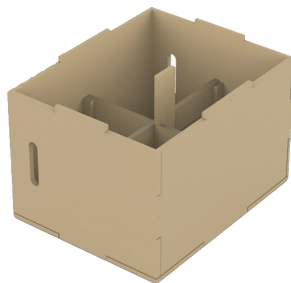
Connect the corresponding 20x30 top and secure them together.



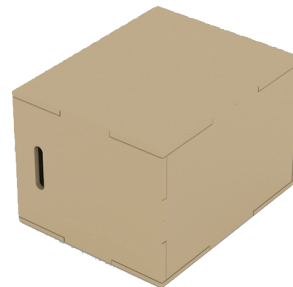
Connect the corresponding 20x30 bottom and secure them together.



Connect the corresponding 20x24 side and secure them together. Ensure handles face the same direction.



Insert the crossmember at the proper 20x24x30 angle to match the box's orientation.



Connect the final 24x30 side and secure them together.

---

**Complete!**

*Check that all 36 screws are secure before use.*