

12V 160W Flexible Solar Panel



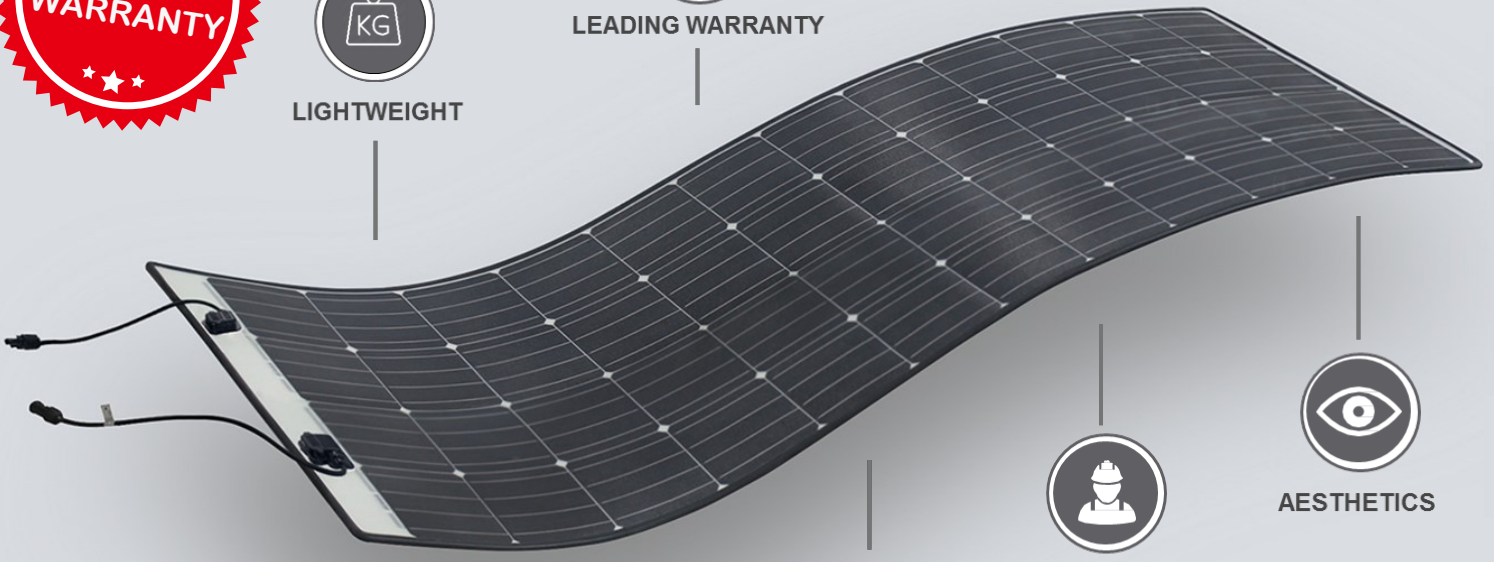
LIGHTWEIGHT



LEADING WARRANTY



FLEXIBLE



AESTHETICS



INSTALL



PERFORMANCE

Perfect for RVs, marine, and other mobile and off-grid applications

Electrical Characteristics

STC	SMS160M-4X09U
Maximum Power (P_{max})	160
Maximum Power Voltage (V_{mp})	19.1
Maximum Power Current (I_{mp})	8.38
Open-circuit Voltage (V_{oc})	23.0
Short-circuit Current (I_{sc})	8.88
Module Efficiency (%)	15.5
Operating Temperature ($^{\circ}C$)	-40 $^{\circ}C$ to 85 $^{\circ}C$
Maximum System Voltage	600 V DC (IEC)
Maximum Series Fuse Rating	20 A
Application Class	Class A
Power Tolerance	0/+5 W

STC: Irradiance 1000W/m², Cell temperature 25 $^{\circ}C$, AM=1.5.

Mechanical Characteristics

STC	SMS160M-4X09U
Solar Cell	Monocrystalline Silicon
No. of Cells	36 (4x9)
Module Dimensions	1546x666x6
Weight	3.2 Kg
Backsheet	White
J-Box	IP 68 rated
Connector	MC4 compatible