



Harley Wax Training Manual & Product Guide  
USA Official Guide 2020



## Contents

2	Introduction
4	Pre & Post Products
6	Hard Wax Range
8	Soft Wax Range
10	Film Wax Range
12	Which Wax do I use?
13	Structure and Characteristics of the Hair
16	Contraindications for Waxing
17	Hygiene and Cleanliness Checklist
18	Client Consultation Cards
21	Cost and Usage per Treatment
22	Waxing Methods



---

### **Why choose Harley Wax?**

Harley Wax is an advanced hair removal waxing system available to spas and salons.

What makes Harley Wax superior to other waxes is that it causes less irritation, less discomfort and better results.

With Harley Wax, you can expect a nourishing skin treatment that will remove hairs as short as 1mm. Unlike other depilatory routines, Harley Wax has almost no sticky residue, it leaves skin soft with no irritation, removes hair from the root to reduce chances of ingrown hairs and leaves skin hair free for much longer.

Harley wax was originally established in the UK. The driving force behind this company was to create a high quality professional waxing system that could also be sold at a reasonable price with excellent customer service.

Harley Wax is used worldwide by some of the of top salons and spas.



---

### **An introduction to Harley Wax:**

Harley Wax is a UK based company, we have achieved rapid success gaining the custom of many award winning top Spas & Salons. This success can be attributed to the many years of experience in the health and beauty industry, the development and formulation of our products, as well as our devotion to excellent customer service.

At the core of our Harley Wax range are the Harley Film Waxes, Hard Waxes and the Harley Soft Waxes. What makes the range unique is that all the waxes are made with the finest natural ingredients available. Key components of the waxes are resin from pine trees, beeswax and essential oils. Along with using high quality natural raw materials. This can account for the gentle nature of our waxing system making it ideal for sensitive skins. All the waxes have been formulated to have a low melting temperature, thereby reducing any excessive discomfort when applying the product. Harley Wax offers an exceptionally effective hair removal treatment with a nurturing & skin conditioning treatment.

### **Why are more therapists are insisting on Harley Wax?**

There are several key reasons why we see more and more professionals insisting on Harley Wax. The phenomenal quality of the wax is undeniable. It is easy to use, providing a very comfortable treatment. Harley Wax is well priced. We can assure you that our customers are receiving consistent quality at an affordable price. Plus, our devotion to customer service makes ordering a breeze with all deliveries via a courier service, unless another service is requested, ensuring you will never run out of stock. Many professional have said that since using Harley Wax their customer base has increased and in some cases, doubled.



## The Harley Waxing Pre and Post Products

- ✓ Our Cleanser & Pre Wax Oil cleanses and prepares the skin for the treatment
- ✓ Enhances the performance of the wax
- ✓ Post-Wax Oil and Aloe Soothing Gel conditions and nurtures the skin
- ✓ Removes any residue (if any)
- ✓ Calms and soothes the skin reducing irritation
- ✓ Use our Cleanser, Pre-Waxing Oil, After Care Oil and Aloe Soothing Gel for maximum results
- ✓ Suitable for all skin types

Product	Key Ingredients
Cleanser & Toner	Aqua, Flower Extract, Lavandula, Augustifolia, Ginseng Root Extract, Parfum
Pre-Wax Oil	Aloe Vera, Aloe Barbadensis, Parfum, Violet
Post Oil	Tea Tree, Lavender, Lavandula, Paraffinum
Aloe Soothing Gel	Aqua, Aloe Barbadensis, Flower Extract

# Pre and Post Products

Harley Wax has developed a range of Pre & Post-waxing oils to ensure the optimum effectiveness of the waxes performance and to ensure treatments are more comfortable and hygienic.



## Cleanser & Toner | An essential skin cleansing step for any waxing treatment

- ✓ An essential product for any Harley Waxing treatment
- ✓ Acting in two stages the cleanser emulsifies and removes dirt and oil embedded in the skin
- ✓ The toner re-balances the skins PH level, tightens the skin and pores and removes any oil or lotion to maximize your waxing results.



## Pre-Wax Oil | Enabling the wax to shrink wrap to the hair and not the skin

- ✓ It is anti-bacterial and anti-viral due to the anthraquinones in the Aloe Vera. Only to be used with Harley Hard Wax or Harley Film Wax.
- ✓ The Zinc in the Aloe Vera found in the Pre-Wax oil aids in wound healing and creating healthy, smooth, glowing skin. This reduces any redness, rashes or raised skin commonly associated with waxing.
- ✓ The Lignins found in Aloe Vera allow for highly penetrative properties of the Harley Pre-Wax oil. Aloe Vera can soak into the skin up to seven layers deep and allows the body to fully absorb all the positive attributes from the treatment.



## After Care Oil | An essential step for an Harley Waxing treatment

- ✓ Use after any Harley Waxing treatment to finish the conditioning treatment of the skin. This reduces skin irritation, redness and the possibility of any ingrown hairs.
- ✓ The Tea Tree acts as an anti bacterial agent to cleanse any dirt and dead skin leaving your skin clear and fresh.
- ✓ With added Lavender properties the After Wax Oil will soften and condition your skin resulting in a silky smooth finish.
- ✓ Massage a small amount into the freshly waxed area to finish the treatment.



## Aloe Soothing Gel | Helps soothe the skin

- ✓ The Harley After-Wax Aloe Soothing Gel is used after any Harley Waxing treatment to finish the conditioning treatment of the skin.
- ✓ Aloe gel leaves an oil free smooth finish.
- ✓ The soothing gel reduces skin irritation, redness and the possibility of any ingrown hairs.



## The Harley Waxing Hard Wax Range

- ✓ Removes hair as short as 1mm
- ✓ Does not leave a sticky residue
- ✓ Can be re-applied to the same area 2-3 times
- ✓ Made from pine tree resin, beeswax & essential oils
- ✓ All our products are not tested on animals
- ✓ Use our Pre-Waxing & After Care Products for maximum results

Ingredients	Description
Resin	From Pine trees
Beeswax	Helps to make the wax more pliable
Essential Oils	These differ from wax to wax
Mica	Specially formulated
Titanium Dioxide	Specially formulated

# Hard Wax

Harley Hard Waxes are for the smaller and more sensitive areas  
Using only the finest ingredients and essential oils.  
All of our Hard Waxes should be used with our Pre-Wax Oil to  
ensure maximum results.

## Titanium Dioxide Wax (Creamy Formulation )

Titanium Dioxide is a naturally occurring oxide mineral of titanium. Titanium Dioxide in wax creates a creamy velvety texture. This assists in the spread ability while guaranteeing a superior less painful grip on the hair as Titanium Dioxide considerably reduces adhesion of the wax onto the skin. This reduces irritation and redness making it an ideal wax for clients with extra sensitive skin. Harley Wax's Titanium Dioxide Waxes include our Chocolate and Rose Hard Wax.

Titanium dioxide waxes are ideal for the extra sensitive areas such as the face and bikini allowing removal of hair as short as 1mm.

To ensure an extra gentle removal, it is essential that Harley Pre Waxing Oil is applied prior to the application of the wax. The Pre-wax oil is specifically formulated so that it coats the skin and not the hairs allowing the wax to only adhere to the hairs and not the actual skin. This allows for a more thorough and comfortable waxing experience.



Rose Hard Wax



Chocolate Hard Wax

## Micromica Wax ( Gel Formulation )

Micromica is a silicate mineral used in depilatory wax to create a smooth consistency and assist in the flexibility and workability of the wax, allowing for less cracking of the product. This mineral has reflective and refractive properties which gives the wax its pearlized and glittery appearance.

Using only the finest ingredients and essential oils. Harley Waxes are low-melting temperature Mica waxes which will guarantee client comfort and total satisfaction.

The range of Mica Waxes that Harley Wax offers is Aloe Hard Wax, Summer Fruits Hard Wax and our Lavender Hard Wax.

Harley Mica Hard Waxes have been created to remove hairs as short as 1mm efficiently and painlessly managing to remove even the most difficult and strong hairs.

For the best possible results when preparing the skin before waxing. It is essential to use Harley Pre-Oil and post products, either the After Care Oil or our Aloe Soothing Gel.



Summer Fruits Hard Wax



Aloe Hard Wax



Lavender Hard Wax





## The Harley Waxing Soft Wax Range

- ✓ Removes hair as short as 1mm
- ✓ Use our Gold Wax for male clients
- ✓ Use our Rose Wax for sensitive skin
- ✓ Can be reapplied to the same area 2-3 times
- ✓ Used on legs and arms for a faster waxing compared to hard waxing
- ✓ All our products are not tested on animals
- ✓ Use our Pre & Post Care products for maximum results
- ✓ Suitable for all skin types

Ingredients	Description
Natural Resin	From Pine trees
Essenital Oils	These differ from wax to wax

# Soft Wax

Harley Soft Wax is designed for larger areas.  
Applied super thinly to grip hair as short as 1mm.



## Summer Fruits Soft Wax | medium strength for average hair

Using only the finest ingredients and essential oils, our low-melt temperature will guarantee client comfort and total satisfaction, and in most treatments will be a pain-free experience. The Harley Summer Fruits Soft Wax is a Micromica liposoluble depilatory wax product that not only gives it a pearlised appearance which makes for a great looking wax, but it also contains the correct equilibrium between the refined resins used and the graded presence of Micromica which allows the product to be removed delicately and softly, keeping the depilatory capacity unaltered.



## Gold Soft Wax | medium strength for average hair

This wax has a superior grip designed specifically for mens hair type. Ideal for the larger wax area such as the leg, back, chest and arms. The wax will grip only the hair & not the skin. The Harley Gold Soft Wax is a Micromica liposoluble depilatory wax product that not only gives it a pearlised appearance which makes for a great looking wax, but it also contains the correct equilibrium between the refined resins used and the graded presence of Micromica which allows the product to be removed delicately and softly, keeping the depilatory capacity unaltered.



## Rose Soft Wax | For fine hairs and sensitive skin

It can be applied super thinly. Ideal for the larger wax areas such as the legs & arms. The wax will grip only the hair & not the skin. The Rose Soft Wax is a Titanium Dioxide depilatory wax. Titanium Dioxide waxes are a new generation of professional waxes able to satisfy even the most demanding application requirements. It gives the depilatory wax a particular softness and is smooth to apply, suitable for use also on very sensitive areas and skins. We recommend the Harley Rose Soft Wax and Hard Wax for all those cases where the skin is dehydrated, dry and sensitive.



## Tea Tree Soft Wax | Can be used for both male & female clients

Can be applied super thinly. Ideal for the larger wax areas such as the legs & arms. The wax will grip only the hair & not the skin. The Tea Tree Wax is a Titanium Dioxide depilatory wax. Titanium Dioxide waxes are a new generation of professional waxes. It gives the depilatory wax a particular softness and is smooth to apply, suitable for use also on very sensitive areas and skins. We recommend the Harley Tea Tree Strip Wax for all those cases where the skin is dehydrated, dry and sensitive.



## The Harley Waxing Film Wax Range

- ✓ A technologically advance hybrid between a hard wax and a soft wax.
- ✓ Removes hairs as short as 1mm
- ✓ Eliminates the need to tweeze
- ✓ A very economical wax as ULTRA thin layers can be applied
- ✓ Ideal for Facial waxing
- ✓ Great for Brazilians
- ✓ Has an extremely low melting temperature
- ✓ A must have for any professional salon or spa

Ingredients	Description
Natural Resin	From Pine trees
Beeswax	Helps to make the wax more pliable
Essential Oil	These differ from wax to wax

# Film Wax

Film Waxing is designed for all areas.

The Harley Film Wax is fantastic for all intimate waxing from facial waxing to brazilians making it a must have for any professional salon or spa.



## Azulene Film Wax | The ultimate wax for intimate waxing

Its performance is of a very high quality. With the strength and pliability of a Harley Hard Waxes it is able to remove hairs as short as 1mm - eliminating the need to tweeze.

It is a technologically advanced wax and can be heated faster on a lower melting temperature.

It can be applied ultra finely, as you would with a soft wax and doesn't require any strips when removing the wax.

This makes it a very economical wax and provides for simplistic waxing treatment that will ensure devoted clients.

As with all Harley Waxing products, it has been manufactured according to high standards in the UK. Only the finest natural ingredients are used. The Harley Azulene Film Wax contains special natural polymers to give it strength, flexibility and elasticity.



## Lavender Film Wax | Made with a soothing lavender aroma

Our Harley Lavender Film Wax has the strength and pliability of a Harley Hard Wax and is able to remove hairs as short as 1mm - eliminating the need to tweeze.

It can be applied ultra finely which makes it a very economical wax and provides for simplistic waxing treatment that will ensure devoted clients. A hybrid wax that provides all the comforts and easy application of a traditional hard wax coupled with the thin "spread-ability" of a soft wax.

This technologically advanced wax is fantastic for all intimate waxing from facial waxing to Brazilians making it a must have for any professional salon or spa.

Its performance is of very high quality and is a technologically advanced wax and can be heated faster on a lower melting temperature

**You**Tube

Watch the YouTube video and see how the professionals use our Film Waxes.

# Harley Wax

## Which wax to use?

Harley has the perfect wax for each area of your body and is specially designed for superior comfort when applying the wax to the designated area.



**Hard Wax |** For the smaller and more sensitive areas

- ✓ Facial waxing
- ✓ Intimate waxing
- ✓ Underarms
- ✓ Brazillians & Bikini



**Soft Wax |** Applied thin and for larger areas.

- ✓ Arms
- ✓ Back
- ✓ Legs



**Film Wax |** For all areas of waxing from faces to Brazilians.

- ✓ Intimate waxing
- ✓ Facial Waxing
- ✓ Under Arm
- ✓ Back, Chest and Legs

The hair is divided into two principal parts

Hair part	Description
Hair Root	The portion of the hair structure beneath the skins surface within the hair follicle. The hair root extends from the hairline to the bulb.
Hair Shaft	The portion of the hair structure extending above the skins surface

Structures associated with the hair root

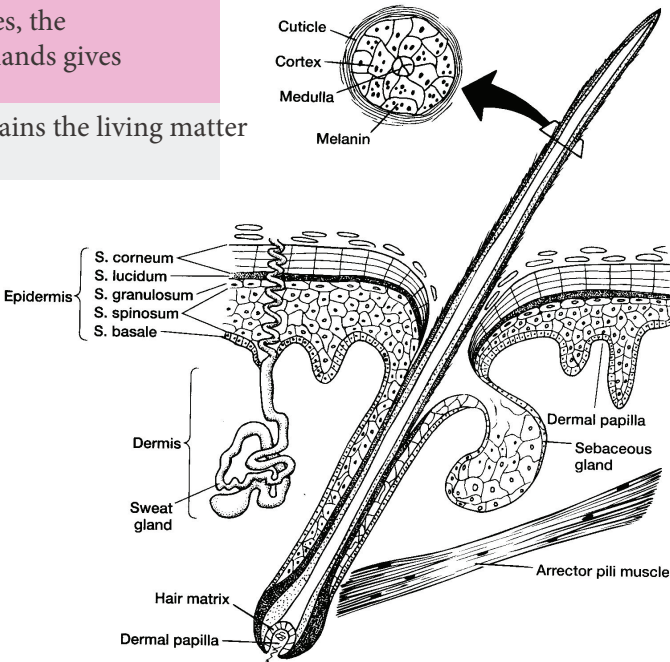
Hair part	Description
Hair Follicle	A tube like depression or pocket in the skin or scalp encasing the hair root
Hair Bulb	A thickened club shaped structure forming the lower part of the hair root
Hair Papilla	Small cone shaped elevation found at the bottom of the hair follicle that fits into the hair bulb. Within the papilla is rich blood and nerve supply that contributes to the growth and regeneration of the hair

Structures associated with the hair follicle

Hair part	Description
Arrector Pili Muscle	A small involuntary muscle attached to the underside of the hair follicle. Fear or cold causes the muscle to contract, making the hair stand on end.
Sebaceous or Oil Gland	Are connected to the hair follicles, the secretion of sebum from these glands gives lustre and pliability to the hair.

The hair has three layers

Hair part	Description
The Cuticle	An exterior layer that is composed of Keratinise cells that make the Hair impermeable.
The Cortex	Are connected to the hair follicles, the secretion of sebum from these glands gives lustre and pliability to the hair.
The Medulla	This is the central core that contains the living matter





## The Hair Growth Cycle

As follicles cease to produce a hair, they shrivel up and the lower part of the bulb degenerates. These resting follicles are simpler and much shorter structures than the active ones. At the base of the resting follicle, the hair, if still present, forms a club that is anchored by keratinous strands to the epithelial sac. Close inspection on removal of a hair in the resting stage will show the shallow position of the hair. It sits almost on the skin's surface and has a full stop on its root end. The rounded club is a ball of cells and the lower part of the epithelial sac called the hairgerm, from which the next generation of hairs develop.

The three stages of hair growth:

Stage	Description
1 Anagen	The actively growing hair. The bulb is thick and fleshy.
2 Catagen	The temporarily inactive hair. The bulb is like a club shape or full stop.
3 Telogen	The hair is resting awaiting new growth. The bulb is non-existent. The sequence of events if simplified becomes Anagen, Catagen, Telogen and repeats itself until a hair ceases to be formed due to internal or external influence

## Factors That Influence Hair Growth

The amount of hair we have on our bodies depends upon many factors: the seasons, climate, hormones and hormonal changes, medication, gender and overall state of health.

Stage	Description
Blood Circulation	Nourishes and removes toxins from the papilla. The papilla is very sensitive to changes in blood circulation.
Emotion Disturbances	Emotional Shock, over exertion or severe stress.
Genetic Factors	Inherited conditions. (Eg: baldness, hormonal imbalances)
Drugs	Hair loss: chemotherapy, abuse of antibiotics or tranquillisers.
Diet	Sudden or total change, iron deficiency, obesity.
Stimulation of Endocrine System	Puberty, Pregnancy, Hysterectomy, dysfunction or disease

## Different Types of Hair Growth

	Description
Superfluous Hair	General term for any unwanted hair condition.
Lanugo Hair	Hair that is formed on the unborn foetus. It is fine hair that lacks a medulla. It is shed shortly after birth, and is replaced with permanent hair.
Vellus Hair	Fine and soft hair that covers most areas of the body, except for the palms of the hands and soles of the feet. They do not contain a medulla.
Terminal Hairs	Coarse visible hairs on the scalp, underarms and pubic areas.
Ingrown Hairs	Hairs that on emerging form the follicle, either grow along the skin's surface or turn back into the follicle opening and become compacted.

# Contraindications to Waxing

If your client has the following you must take extra care and safety precautions as well as use good judgement, as there are various levels of severity in each condition

Stage	Description
Varicose veins	Do not wax over moderate or well-pronounced varicose veins.
Bruises	Do not wax over bruises.
Skin diseases	i.e.. Herpes - do not wax near herpes or cold sores.
Defective Circulation	i.e.. ulcers on the legs - do not wax over these.
Cuts, abrasions, scabs	Do not wax over any of these, unless they are well healed.
Warts	Do not wax over warts.
Hairy moles	Do not wax hair from hair moles, simply cut the hair off at skin level before waxing the surrounding area.
Hypersensitive	Hypersensitive skin from sunburn or windburn - do not wax over these conditions until the skin is well healed.
Recent scars	Only wax after scars have healed well.
Irritated or inflamed skin	Do not wax these conditions.
Rashes or infection	Do not wax over these conditions.
Medication	Customer is on medication such as Roacutane or Retin A
Others	Diabetes mellitus, boils, rashes, any skin infections
Electrolysis	Before or after electrolysis or ultraviolet treatment to the area

After waxing the clients follicles are open. It is advisable that you also recommend after waxing care instructions to the client to prevent them from irritating or infecting their skin.

- ✓ Do not go swimming, hot shower or bath until redness subsides.
- ✓ Do not use a solarium or go tanning until redness subsides.
- ✓ Do not apply self-tanning products until redness subsides.
- ✓ Do not exfoliate the area for up to 72 hours after waxing.

Remember to use our Harley Pre and Post Products for the best results.

Harley's Pre & Post Waxing products are the key to the success of the treatment. Developed exclusively with the Harley waxing range, it delivers a top-notch results for your clients.





We suggest you use this checklist to ensure you are providing safe waxing procedures:

Checklist
Assess all clients prior to the waxing treatment.
Is your client taking any form of medication?
Has your client been in the sun or used a sun bed over the last few days?
Does your client have any open wounds, rashes or skin infections?
Has the bed, trolley and all implements been sterilized?
Is your wax heater clean? And Is your wax the correct working temperature?
Have you washed your hands with antiseptic, do you have gloves on?
Do you have disposable spatulas or sufficient metal spatulas?
Do you have good lighting?
Have you preparing the skin by using Harley Cleanser & Toner?
When using HARLEY Hot Wax have you applied a small amount of Harley Pre-Waxing oil?
After each application apply either After Wax or Aloe Soothing Gel.

### The importance of client consultation cards

These are used to ensure all steps are taken to insure your client has the appropriate treatment taking into account any health issues the client might be experiencing

In the unlikely event of a client making an insurance claim against you, the consultation card will show that all steps required of you were taken and the health information that the client told you will be recorded.

Consultation forms are part of a criterion for standard legal operating procedure in the Beauty Industry and are drilled into beauty professional's routine from day one. A consultation card is used to find out if there are any contra-indications which may prevent the beauty therapist from carrying out a treatment. All salon professionals carrying out treatments must keep their client's consultation cards and ensure that they are stored in a cabinet which can be locked in order to comply with the data protection act.

- ✓ Personal details
- ✓ Clients lifestyle
- ✓ Review the form
- ✓ Medical History
- ✓ Treatment record
- ✓ Question anything that is unclear
- ✓ Contraindications
- ✓ Have the client sign the form

#### Please note:

You should only carry out a treatment after surgery if a written letter from a doctor is given to you before the treatment is carried out.

When carrying out a client consultation you should be looking for contra-indications to the treatment. Contra-Indications are health conditions that the client may have which mean that you should be cautious or possibly avoid working on those specific areas of the body. In more extreme cases you may need to avoid treatment altogether.

It is important that you check with your insurance company to determine which contra-indications they require you to check for; the list of contra-indications can differ between insurers. Therefore, if you do not check for their list of contra-indications, then you may find that you are not covered should a client make a claim against you.

If the client is a regular, you should ask them to check the consultation form that they have filled in and inform you of any changes. Once you have determined that it is safe to proceed with the treatment, take the client to the treatment area and perform the treatment.

Following the treatment, you should assess the treatment, make notes of any observations that you made during the treatment and give the client after care advice.



# Clients Personal Information Chart

Full Name  Date

Street Address

Address

Tel

Email

Date of Birth  Cell

	Y	N	Additional Comments
1. Have you ever had a wax?	<input type="checkbox"/>	<input type="checkbox"/>	
2. Are you taking Retin A, Accutane, Glycolic Acid, A.H.A Skin Care or any other similar products that effects the skin?	<input type="checkbox"/>	<input type="checkbox"/>	
3. Have you recently had any type of chemical or glycolic peel?	<input type="checkbox"/>	<input type="checkbox"/>	
4. If glycolic, what percentage? If chemical, please explain	<input type="checkbox"/>	<input type="checkbox"/>	
5. Do you have any allergies?	<input type="checkbox"/>	<input type="checkbox"/>	
6. Do you have diabetes?	<input type="checkbox"/>	<input type="checkbox"/>	
7. Have you had surgery in the past 3 months or dermabrasion?	<input type="checkbox"/>	<input type="checkbox"/>	
8. Are you taking any antibiotics or medication? If so, please list all (including over the counter drugs/herbal supplements):	<input type="checkbox"/>	<input type="checkbox"/>	
9. Are you using any skin thinning products and/or drugs?	<input type="checkbox"/>	<input type="checkbox"/>	
10. How would you rate your sensitivity to pain?	<input type="checkbox"/>	<input type="checkbox"/>	
11. Do you have any moles, warts, abrasions, skin irritations or skin inflammations in the areas to be waxed?	<input type="checkbox"/>	<input type="checkbox"/>	
12. Have you been exposed to any tanning method in the past 24 hours?	<input type="checkbox"/>	<input type="checkbox"/>	
13. Are you exposed to the sun on a daily basis or are you considering spending more time in the sun soon?	<input type="checkbox"/>	<input type="checkbox"/>	
14. Please describe your current skin condition.			
15. Have you had any bad waxing treatments? If so, when and with what products, the more detail the better.	<input type="checkbox"/>	<input type="checkbox"/>	

Female Clients: When is your next menstrual cycle due to begin? \_\_\_\_\_  
 (Always allow five days for menstrual cycle. Because of water retention and for your own personal comfort, you should avoid hair removal two days before your cycle is due and two days after it is completed.)

In an effort to make your waxing experience as comfortable as possible, please supply your wax technician with all the necessary details in regard to past waxing procedures or health information not requested on this form.

\_\_\_\_\_

\_\_\_\_\_

Customer Signature \_\_\_\_\_

## After Care and Recommendations

(Please check each point to ensure you understand these recommendations)

- Apply a sunblock with an SPF of at least 15
- Avoid use of a loofah or other abrasives to the waxed area (within 24 hours)
- Avoid sauna, steam room, whirlpool bath or other heat source (for 24 hours)
- Avoid application of Retin-A, AHA product or other exfoliant product for 48 hours before and after waxing
- Avoid all irritating chemicals such as chlorine pools, perfumes, fabric softeners, deodorants (for 24 hours)

## Contraindications/Cautionary Conditions

The following is a list of contraindications to waxing services which will make this waxing appointment inadvisable or may result in certain body areas not being waxed. Your esthetician will review these with you prior to your treatment.

Please check if you do any of the following (Y- Yes, N- No). Please give details where necessary.

	Y	N	Additional Comments
1. Broken Skin, Open Cuts, Pustules or Papules?	<input type="checkbox"/>	<input type="checkbox"/>	
2. Inflammation?	<input type="checkbox"/>	<input type="checkbox"/>	
3. Bruises?	<input type="checkbox"/>	<input type="checkbox"/>	
4. Sunburn?	<input type="checkbox"/>	<input type="checkbox"/>	
5. Rosacea/Very Sensitive Skin?	<input type="checkbox"/>	<input type="checkbox"/>	
6. Recent chemical peeling?	<input type="checkbox"/>	<input type="checkbox"/>	
7. Recent Botox/Collagen Injections?	<input type="checkbox"/>	<input type="checkbox"/>	
8. Cosmetic/Reconstructive Surgery?	<input type="checkbox"/>	<input type="checkbox"/>	
9. Suspicious Growths/Moles?	<input type="checkbox"/>	<input type="checkbox"/>	
10. Phlebitis/Swelling – Lower Legs?	<input type="checkbox"/>	<input type="checkbox"/>	
11. Fragile Capillaries/Varicose Veins?	<input type="checkbox"/>	<input type="checkbox"/>	
12. Flat Moles?	<input type="checkbox"/>	<input type="checkbox"/>	
13. Blood Thinning Medications?	<input type="checkbox"/>	<input type="checkbox"/>	
14. Please describe your current skin condition.	<input type="checkbox"/>	<input type="checkbox"/>	
15. Have you had any bad waxing treatments? If so, when and with what products, the more detail the better.	<input type="checkbox"/>	<input type="checkbox"/>	

I hereby release this establishment from \_\_\_\_\_  
The hair removal procedure and after care have been thoroughly explained to me and I have had the opportunity to ask questions and receive satisfactory answers. I understand that because of certain health conditions, epilation services may not be advised.  
I also understand that there may be swelling or irritation in waxed areas and that this may only be a temporary condition. I am of lawful age and have read and fully understand and have completed the content of this document to the best of my knowledge and represent myself as physically capable of providing the service offered by this facility.

Customer Signature \_\_\_\_\_

Date \_\_\_\_\_

# Harley Wax

## Cost & Usage Per Treatment

Please refer to the following table to determine our estimated treatment costs.

For optimum waxing results and client comfort, we recommend using Harley Waxing's Pre & Post products.

Wax	Both Legs 1/2 Leg	Underarm (2)	Full Face	Bikini	Chin	Eyebrow (2)	Lips
Amount Needed	600g	31g	35g	35g	7g	3.5g	3.5g
Aloe Hard	\$21	\$1	\$1.20	\$1.20	\$0.25	\$0.15	\$0.15
Rose Hard	\$21	\$1	\$1.20	\$1.20	\$0.25	\$0.15	\$0.15
Chocolate Hard	\$21	\$1	\$1.20	\$1.20	\$0.25	\$0.15	\$0.15
Lavender Hard	\$21	\$1	\$1.20	\$1.20	\$0.25	\$0.15	\$0.15
Summer Fruits Hard	\$21	\$1	\$1.20	\$1.20	\$0.25	\$0.15	\$0.15
Amount Needed	18g	5g	10g	10g	5g	2g	2g
Rose & TeaTree Soft	\$0.75	\$0.20	\$0.40	\$0.40	\$0.20	\$0.10	\$0.10
Gold Soft	\$0.75	\$0.20	\$0.40	\$0.40	\$0.20	\$0.10	\$0.10
Summer Fruits Soft	\$0.75	\$0.20	\$0.40	\$0.40	\$0.20	\$0.10	\$0.10
Amount Needed	350g	16g	18g	18g	3.5g	2g	2g
Lavender Film	\$12.20	\$0.45	\$0.65	\$0.65	\$0.10	\$0.05	\$0.05
Azulene Film	\$12.20	\$0.45	\$0.65	\$0.65	\$0.10	\$0.05	\$0.05

### Please note:

This information is to be used as a guide only and has been calculated in accordance with the minimum product usage. The above calculations are based on price list in August 2020 at \$17.50p/425g for strip wax and \$34.90/kg for Hard and Film Wax.

Treatment costs excluding Pre and Post products. The costs may vary slightly with individual therapists. Please note hard wax is recommended for smaller sensitive areas and not for general use.

**How it works:**

Harley Hard Waxes contain a few surprises, extra strong grip, no skin drag and no sticky residue.

Apply to smaller more sensitive areas to grip and remove hair as short as 1mm

**Directions for use:**

Break into smaller pieces by using a hammer. Place wax into a wax heater at a low heat setting, occasionally stir the wax while slowly turning up the wax heater until you have a soft honey like consistency.

Test the wax on the inside of your wrist to ensure it is at a comfortable temperature. Then prepare skin by cleansing the skin with Harley Cleanser & Toner then apply a thin layer of Harley Pre-Wax Oil with a cotton pad.

Using a spatula, apply wax evenly first in the opposite direction of hair growth and then with the direction of hair growth in the same stroke, go past the start point to make a tab.

Once the wax has cooled and become slightly firm (not hard or brittle) flick up the tab. Gripping the tab with one hand and firmly holding the skin with the other, remove the wax in the opposite direction of the hair growth in one quick motion and immediately apply firm pressure with your hand to soothe and reduce redness. After treatment, tweeze away any stubborn hairs and apply Harley After Wax Oil or Aloe Soothing Gel to reduce redness and soothe the skin.

**Pre-Waxing Tips:**

Exfoliate 48 hours before a waxing treatment to maximize waxing results.

Avoid using creams, lotions or oils before a treatment.

Test patch 48 hours before a full treatment.

**Post-Waxing Tips:**

After a waxing treatment it is advisable to stay out of the sun for at least 48 hours. If this cannot be avoided then a good sun block needs to be applied.

Wear loose fitting clothes after a wax treatment to reduce skin irritation.

Avoid hot showers until any redness subsides.

Exfoliate 72 hours after a waxing treatment to reduce the chances of ingrown hairs.

Avoid applying any perfumed products for up to 48hrs after a waxing treatment.

**How it works:**

Harley Film Waxes combine the best qualities of our Harley Hard Wax and Harley Soft Wax ranges. With an extra strong grip, less skin drag and no sticky residue the Harley Film Wax range makes it the perfect wax for waxing both large and small areas.

**Directions for use:**

Place wax into a wax heater at a low heat setting, occasionally stir the wax while slowly turning up the wax heater until you have a soft honey like consistency.

Test the wax on the inside of your wrist to ensure it is at a comfortable temperature. Then prepare the skin by using Harley Cleanser & Toner. Next, apply a thin layer of Harley Pre-Wax Oil with a cotton pad.

Load your spatula and drop onto the skin then quickly spread the wax in the direction of the hair growth. Slightly lift the spatula at the end & wave over the patch until the stringy bit snaps off.

If the wax is too stringy, slightly turn up your heater but not too much or you will not be able to load the spatula.

Once the wax has cooled and become slightly firm and not tacky flick up a tab. Gripping the tab with one hand and firmly holding the skin with the other, remove the wax in the opposite direction of the hair growth in one quick motion and immediately apply firm pressure with your hand to soothe and reduce redness. After treatment, tweeze away any stubborn hairs and apply Harley After Wax Oil or Aloe Soothing Gel to reduce redness and soothe the skin.

**Pre-Waxing Tips:**

Exfoliate 48 hours before a wax treatment to maximize waxing results. Avoid using creams, lotions or oils before a treatment.

Test patch 48 hours before a full treatment.

**Post-Waxing Tips:**

After a waxing treatment it is advisable to stay out of the sun for at least 48 hours. If this cannot be avoided then a good sun block needs to be applied.

Wear looser fitting clothes after a wax treatment to reduce skin irritation.

Avoid hot showers until any redness subsides.

Exfoliate 72 hours after waxing treatment to reduce the chances of ingrown hairs.

Avoid applying any perfumed products for up to 48 hours after a waxing treatment.

**How it works:**

Harley Soft Wax contains the correct equilibrium between refined resins and Micromica and Titanium Dioxide which looks fantastic while keeping the depilatory capacity unaltered. Made for the most stubborn hair. Apply to larger areas to remove hair as short as 1mm.

**Directions for use:**

Remove lid and place wax tub into a wax heater at a low heat setting, occasionally stir the wax while slowly turning up the wax heater until you have a soft honey like consistency. You may at this point wish to transfer the wax into a spare heater sleeve suitable for your heater.

Test the wax on the inside of your wrist to ensure it is at a comfortable temperature.

Then prepare the skin with Harley Cleanser & Toner. Using a spatula, apply wax evenly in the direction of the hair growth.

For stubborn hair, start by going against the direction of the hair growth and then back down in one stroke.

Massage a waxing strip into the wax then while gripping the strip with one hand and firmly holding the skin with the other, remove the strip in the opposite direction of the hair growth in one quick motion and immediately apply firm pressure with your hand to soothe and reduce redness.

**Pre-Waxing Tips:**

Exfoliate 48 hours before a wax treatment to maximize waxing results. Avoid using creams, lotions or oils before a treatment.

Test patch 48 hours before a full treatment.

**Post-Waxing Tips:**

After a waxing treatment it is advisable to stay out of the sun for at least 48 hours. If this cannot be avoided then a good sun block needs to be applied.

Wear looser fitting clothes after a wax treatment to reduce skin irritation.

Avoid hot showers until any redness subsides.

Exfoliate 72 hours after waxing treatment to reduce the chances of ingrown hairs.

Avoid applying any perfumed products for up to 48 hours after a waxing treatment.





---

Thank you for choosing Harley Wax

For more information contact us on:

USA

1-980-248-9943

[nicole@harleywaxing.com](mailto:nicole@harleywaxing.com)

[www.harleywaxing.com](http://www.harleywaxing.com)

United Kingdom

+(0)44 1984 623 209

[info@harleywaxing.co.uk](mailto:info@harleywaxing.co.uk)

[www.harleywaxing.co.uk](http://www.harleywaxing.co.uk)