



Safety Rail Source®

NEXTGEN SKYLIGHT SAFETY-SCREEN™

MODEL SSS

INSTALLATION INSTRUCTIONS

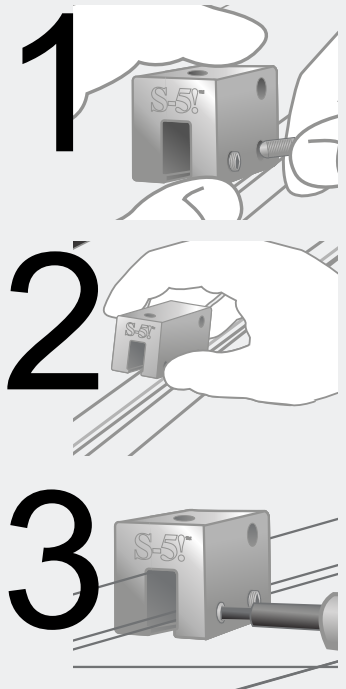
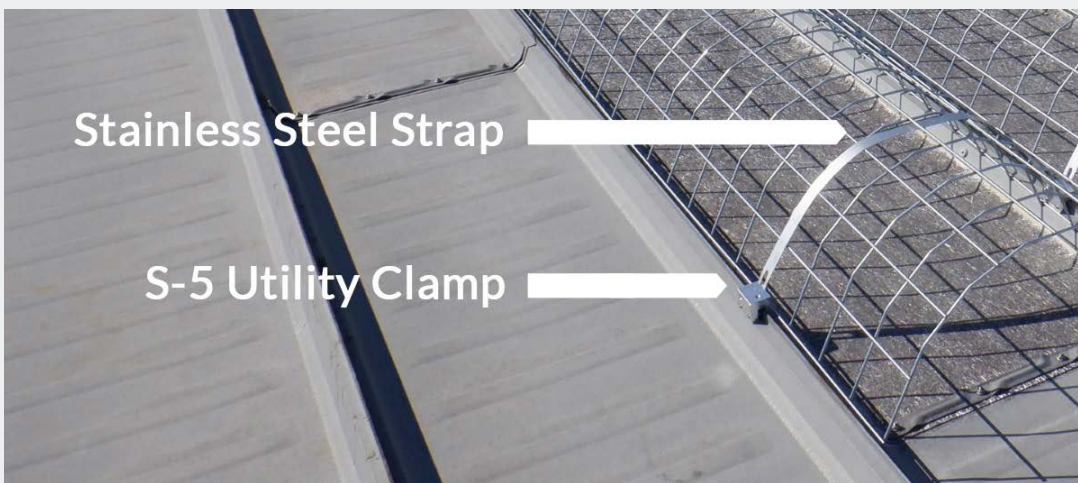
Use these instructions as part of a training program as required by OSHA and any applicable state agency. The user must understand how to safely use NextGen Skylight Safety-Screens and all safety equipment used in combination with installation.

A competent person who is highly trained and experienced, assigned by the employer, must be responsible for all elements of a fall safety program, including the regulation, management, and application as it relates to the use of the NextGen Skylight Safety-Screens.

Safety Information

Serious injury, bodily harm or death may result if there is a failure to understand and comply with safety regulations. These instructions are not all-inclusive and are for reference only and not intended to replace a competent person, knowledge or judgment of Federal and State Standards. A new OSHA Rule is in affect: Walking-Working Surfaces, 1910.28, please consult this as well as all local, State and Federal OSHA rules.

Workplace conditions including, but not limited to weather conditions, corrosive chemicals, potential electrical hazards, sharp objects, and slope of the surface must be evaluated by a competent person before equipment is selected and before work begins. DO NOT misuse equipment. DO NOT alter equipment.



Tools Required:

- 5/8" crescent wrench
- 3/16" allen wrench
- pliers or vise grips
- cordless drill with 3/16 allen wrench bit or 5/8" hex driver bit

Contents/Materials:

- screen
- 2 stainless steel straps
- 4 S-5 clamps



Made in USA

Safety Rail Source®
2570 Blvd of the Generals, Ste. 200
Norristown, PA 19403
(877) 723-3766
www.SafetyRailSource.com



Safety Rail Source®

NEXTGEN SKYLIGHT SAFETY-SCREEN™

MODEL SSS

INSTALLATION INSTRUCTIONS

1. Carefully place and center screen over skylight and inside of standing seam. Note cutout area of screen material along edge of screen. Mark center of each cut out area on the standing seam. Place screen aside after placement marks are completed. Note: If screen was ordered un-cut, it is the installer's responsibility to make the cuts needed so utility clips can be secured to seam properly without interfering with any existing protrusion or previously attached item on roof.
2. Utility clamps must be assembled and properly placed. Note where edge of standing seam roof material ends (inside on one side and outside on the other side) and place the set screws in the utility clamps in the opposite side of the clamp so edge of installed clamp will compress against the edge side of the metal seam when installed. In addition, the threaded hole on top of opposing clamps must be oriented the same so hold down strap will install straight across the screen material (see picture).
3. Using 3/16 allen wrench (with or without screw gun) place assembled, properly placed, clamp to the seam at all marked points. Tighten securely.
4. Place screen in between standing seams and seat down and against the interior of the seams. Clamps must be at cut out area of screen.
5. Stainless steel strap with small hole end is installed under the first screen cross wire and attached to clamp with supplied washer and 5/8" hex head bolt. Install strap on top of screen cross wires to other side where again strap is threaded under last cross wire to opposite clamp. Place this strap end with elongated hole over clamp and install washer and bolt. Hand tighten. Using pliers or vice grips, pull end of strap to tightly secure screen to roof and secure the utility clamp bolt firmly (see picture). Install second strap on opposite end of unit.
6. Carefully re-check for secure installation of each and every utility clamp and strap. Check to see that each strap is installed with approximately the same compression.



Made in USA

Safety Rail Source®
2570 Blvd of the Generals, Ste. 200
Norristown, PA 19403
(877) 723-3766
www.SafetyRailSource.com