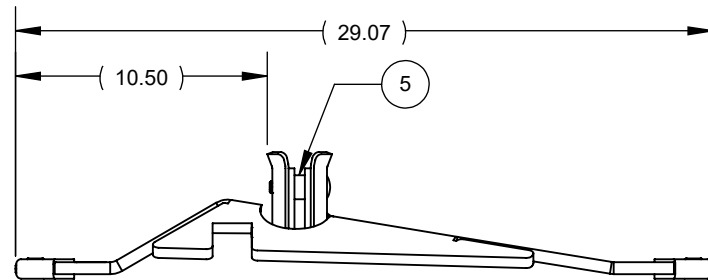
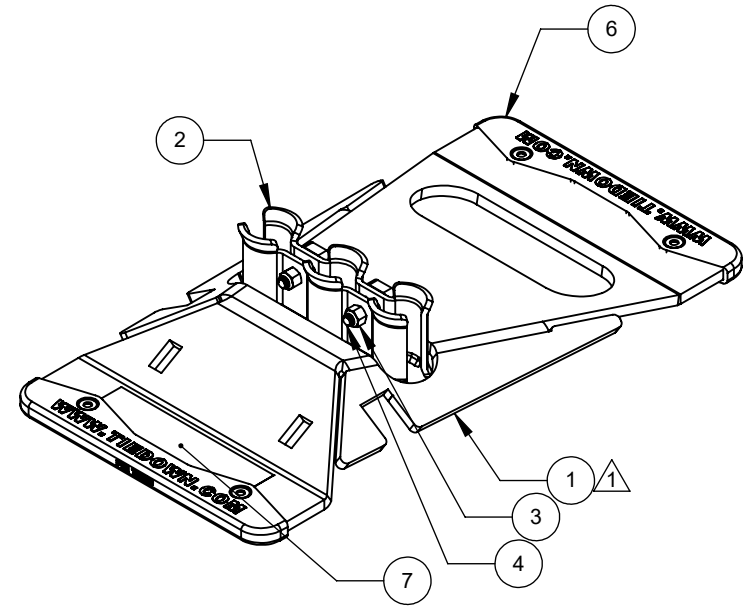
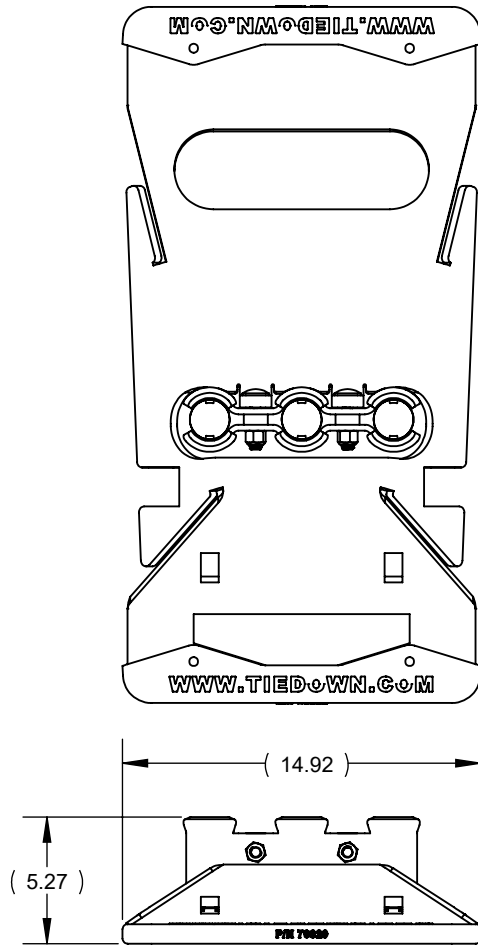


| ITEM NO. | PART NUMBER | DESCRIPTION | |
|----------|-------------|--|---|
| 1 | 71091-1 | GATOR BASE - 3 RAIL FORMED BASE | 1 |
| 2 | 71091-2 | GATOR CLAMP - 3 RAIL | 2 |
| 3 | 10645 | NUT NYLOCK 1/2-13 ZINC | 2 |
| 4 | 10865 | BOLT CARRIAGE, 1/2-13 X 2.25 L. ZINC GR 5 | 2 |
| 5 | 15115 | EPDM RUBBER SPACER 1.00 OD X 0.55 ID X .75 | 2 |
| 6 | 70829 | ZIP BASE RUBBER FOOT | 2 |
| 7 | 15847 | GATOR BASE DECAL | 1 |

| REVISION HISTORY | | | | |
|------------------|----------|-----|---------|--|
| REV. | DATE | BY | EFFCTV. | DESCRIPTION |
| 1 | 8/3/2021 | JGA | R.C. | BASE PROFILE CHANGE TO TRAPEZOIDAL, DESCRIPTION CHANGE, ADDED ASSEMBLY INSTRUCTION PAGES |



NOTES:

1. ALL DIMENSIONS ARE IN INCHES.
2. BOXED DIMENSIONS INDICATE OPERATOR Q.C. CHECK.
3. WELD TO BE FREE OF SPATTER & POROSITY w/GOOD PENETRATION.
4. PART TO BE FREE OF BURRS, SHARP EDGES & LASER SLAG.
5. PART TO SATISFY THE REQUIREMENTS, SPECIFIED AND IMPLIED.
6. FINISH:
 1. 71091 (PLASCOAT YELLOW ASSEMBLY)
 2. 71091G (GALV ASSEMBLY)

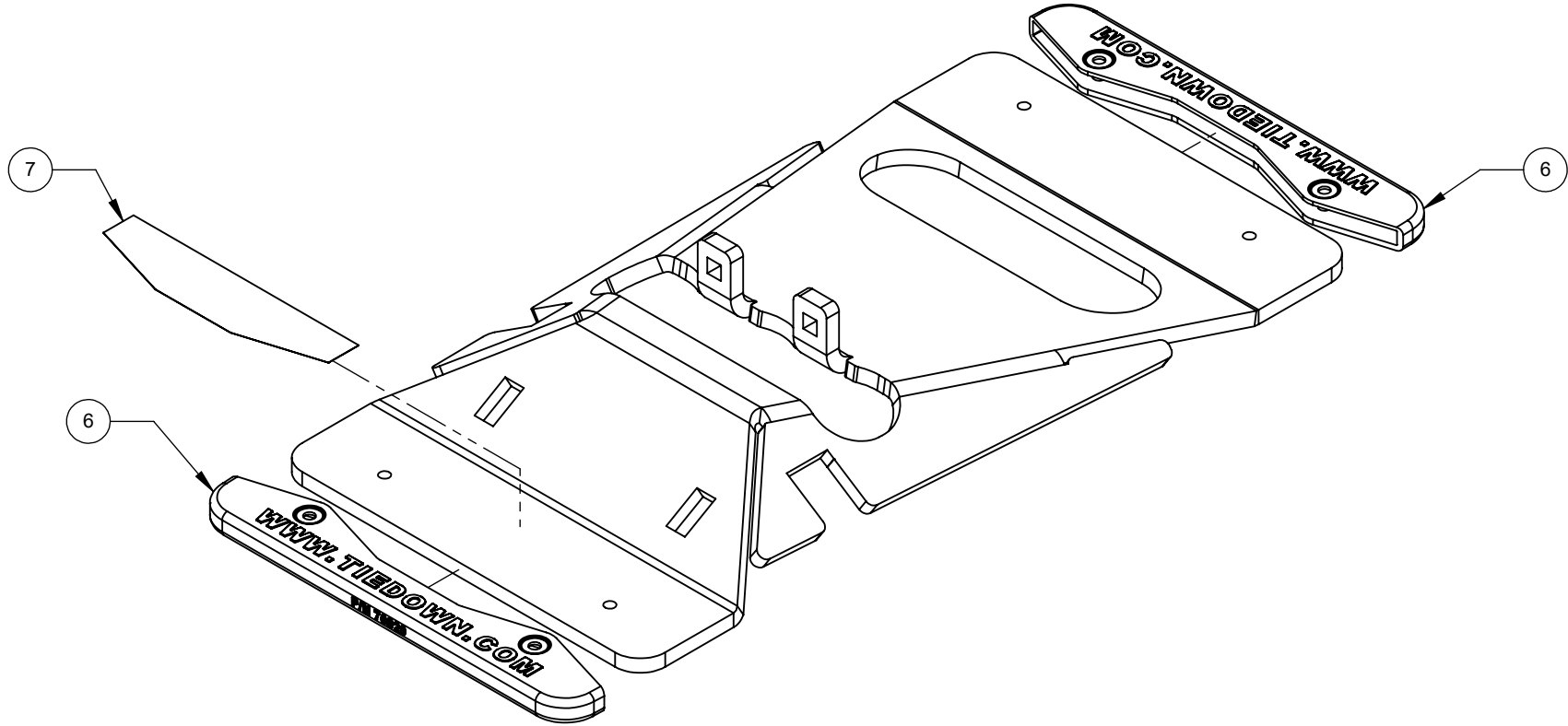
| | | | | |
|-----------------------------|--|--|---|------------|
| FINISH: SEE NOTES | | CONFIDENTIALITY NOTICE: THIS DRAWING AND ALL INFORMATION CONTAINED WITHIN IT ARE THE PROPERTY OF TIE DOWN ENGINEERING, ATLANTA, GA 30336. ALL RIGHTS ARE RESERVED. | | |
| DRAWN: JGA 05/06/2021 | THIRD ANGLE PROJECTION | GENERAL TOLERANCES: Decimal X.X +/- 0.1 | TIE DOWN 404-344-0000 • TIEDOWN.COM 605 STONEHILL DRIVE SW, ATLANTA, GA 30336 | |
| CHECKED: | ALL UNITS ARE IN INCHES UNLESS OTHERWISE SPECIFIED | Decimal X.XX +/- 0.02 | PART DESCRIPTION: GATOR BASE - 3 RAIL | |
| APPROVED: | PART WEIGHT: 55.02 LBS SHEET SIZE: ANSI A | Decimal X.XXX +/- 0.010 Angles +/- 1° Hole ϕ +/- 0.008 | MATERIAL: | |
| PART NUMBER: 71091 | | | SCALE 1:8 | REV.: 1 |
| | | | SHEET: 1 of 3 | |

RUBBER FOOT & DECAL ASSEMBLY



1. GLUE 70829 TO BASE
2. ADD 15847 TO BASE

| REVISION HISTORY | | | | |
|------------------|----------|-----|---------|--|
| REV. | DATE | BY | EFFCTV. | DESCRIPTION |
| 1 | 8/3/2021 | JGA | R.C. | BASE PROFILE CHANGE TO TRAPEZOIDAL, DESCRIPTION CHANGE, ADDED ASSEMBLY INSTURCTION PAGES |



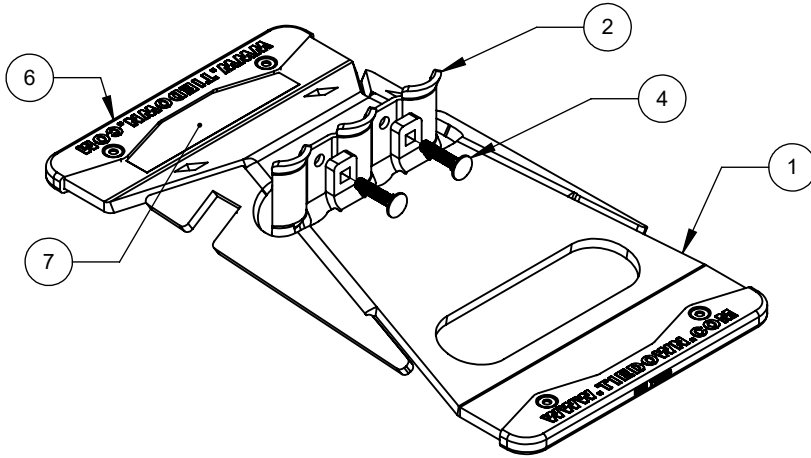
| ITEM NO. | PART NUMBER | DESCRIPTION | QTY. |
|----------|-------------|--|------|
| 1 | 71091-1 | GATOR BASE - 3 RAIL FORMED BASE | 1 |
| 2 | 71091-2 | GATOR CLAMP - 3 RAIL | 2 |
| 3 | 10645 | NUT NYLOCK 1/2-13 ZINC | 2 |
| 4 | 10865 | BOLT CARRIAGE, 1/2-13 X 2.25 L. ZINC GR 5 | 2 |
| 5 | 15115 | EPDM RUBBER SPACER 1.00 OD X 0.55 ID X .75 | 2 |
| 6 | 70829 | ZIP BASE RUBBER FOOT | 2 |
| 7 | 15847 | GATOR BASE DECAL | 1 |

| | | | | |
|-----------------------------|--|--|---|------------|
| FINISH: SEE NOTES | | CONFIDENTIALITY NOTICE: THIS DRAWING AND ALL INFORMATION CONTAINED WITHIN IT ARE THE PROPERTY OF TIE DOWN ENGINEERING, ATLANTA, GA 30336. ALL RIGHTS ARE RESERVED. | | |
| DRAWN: JGA 05/06/2021 | THIRD ANGLE PROJECTION | GENERAL TOLERANCES: Decimal X.X +/- 0.1 Decimal X.XX +/- 0.02 Decimal X.XXX +/- 0.010 | 404-344-0000 • TIEDOWN.COM 605 STONEHILL DRIVE SW, ATLANTA, GA 30336 | |
| CHECKED: | ALL UNITS ARE IN INCHES UNLESS OTHERWISE SPECIFIED | Angles +/- 1° Hole ϕ +/- 0.008 | PART DESCRIPTION: GATOR BASE - 3 RAIL | |
| APPROVED: | PART WEIGHT: 55.02 LBS SHEET SIZE: ANSI A | PART NUMBER: 71091 | SCALE 1:5 | REV.: 1 |
| | | | SHEET: 2 of 3 | |

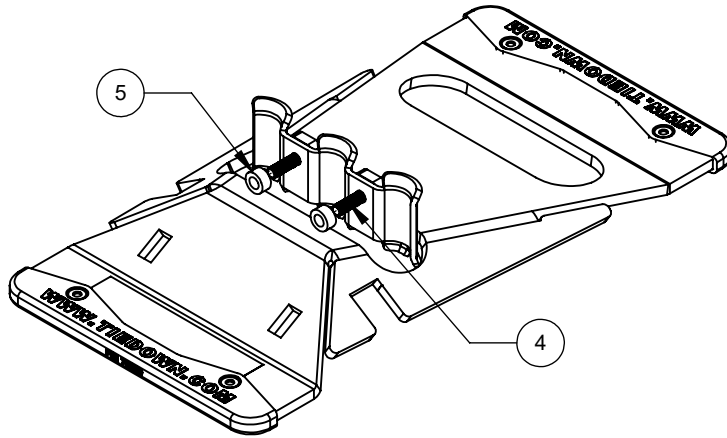
CLAMP ASSEMBLY INSTRUCTIONS

| REVISION HISTORY | | | | DESCRIPTION |
|------------------|----------|-----|---------|--|
| REV. | DATE | BY | EFFCTV. | |
| 1 | 8/3/2021 | JGA | R.C. | BASE PROFILE CHANGE TO TRAPEZOIDAL, DESCRIPTION CHANGE, ADDED ASSEMBLY INSTRUCTION PAGES |

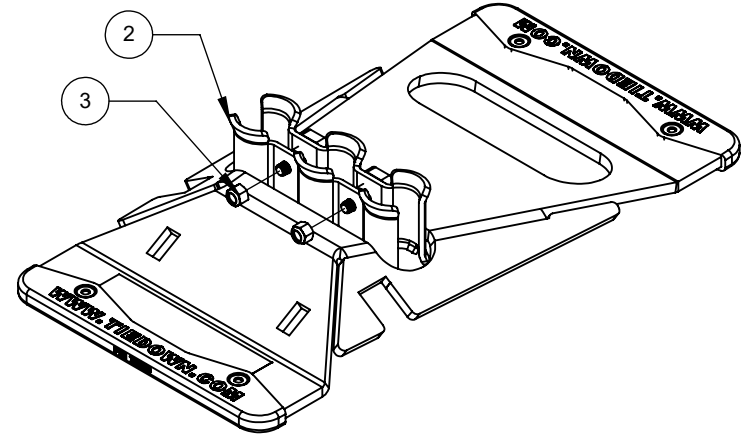
STEP 1 - INSERT 10865 THROUGH 71091-1 AND 71091-2



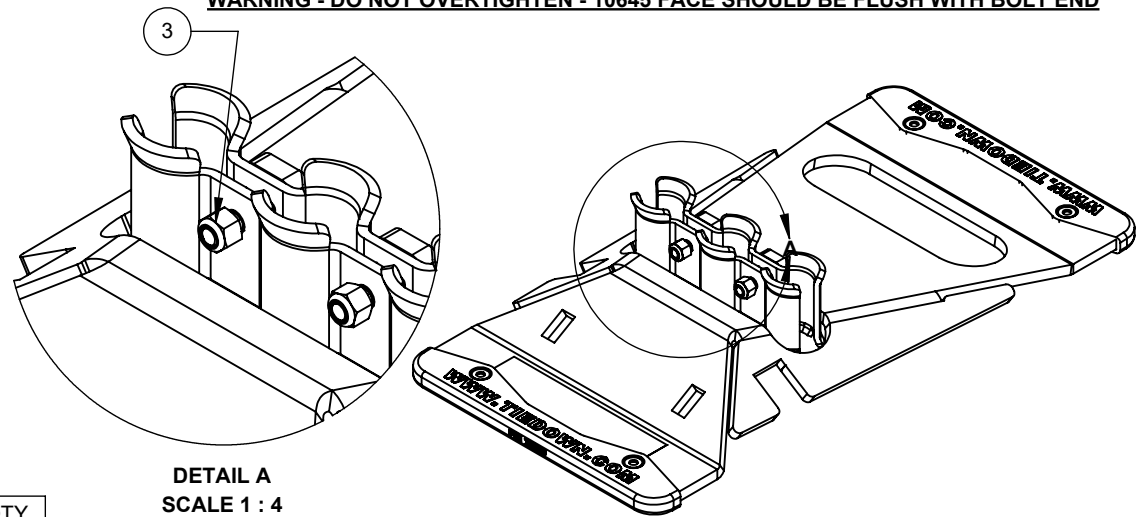
STEP 2 - INSERT 15115 ONTO 10865



STEP 3 - INSERT SECOND 71091-2 AND SECURE WITH 10645




WARNING - DO NOT OVERTIGHTEN - 10645 FACE SHOULD BE FLUSH WITH BOLT END



**DETAIL A
SCALE 1 : 4**

| ITEM NO. | PART NUMBER | DESCRIPTION | QTY. |
|----------|-------------|--|------|
| 1 | 71091-1 | GATOR BASE - 3 RAIL FORMED BASE | 1 |
| 2 | 71091-2 | GATOR CLAMP - 3 RAIL | 2 |
| 3 | 10645 | NUT NYLOCK 1/2-13 ZINC | 2 |
| 4 | 10865 | BOLT CARRIAGE, 1/2-13 X 2.25 L. ZINC GR 5 | 2 |
| 5 | 15115 | EPDM RUBBER SPACER 1.00 OD X 0.55 ID X .75 | 2 |
| 6 | 70829 | ZIP BASE RUBBER FOOT | 2 |
| 7 | 15847 | GATOR BASE DECAL | 1 |

| | | | |
|-----------------------------|---|--|--|
| FINISH: SEE NOTES | | CONFIDENTIALITY NOTICE: THIS DRAWING AND ALL INFORMATION CONTAINED WITHIN IT ARE THE PROPERTY OF TIE DOWN ENGINEERING, ATLANTA, GA 30336. ALL RIGHTS ARE RESERVED. | |
| DRAWN: JGA 05/06/2021 | THIRD ANGLE PROJECTION  | GENERAL TOLERANCES: Decimal X.X +/- 0.1 | TIE DOWN 404-344-0000 • TIEDOWN.COM 605 STONEHILL DRIVE SW, ATLANTA, GA 30336 |
| CHECKED: | ALL UNITS ARE IN INCHES UNLESS OTHERWISE SPECIFIED | Decimal X.XX +/- 0.02 | |
| APPROVED: | PART WEIGHT: 55.02 LBS | Decimal X.XXX +/- 0.010 | PART DESCRIPTION: GATOR BASE - 3 RAIL |
| | SHEET SIZE: ANSI A | Angles +/- 1° | MATERIAL: |
| | | Hole ϕ +/- 0.008 | PART NUMBER: 71091 |
| | | | SCALE: 1:8 |
| | | | REV.: 1 |
| | | | SHEET: 3 of 3 |