



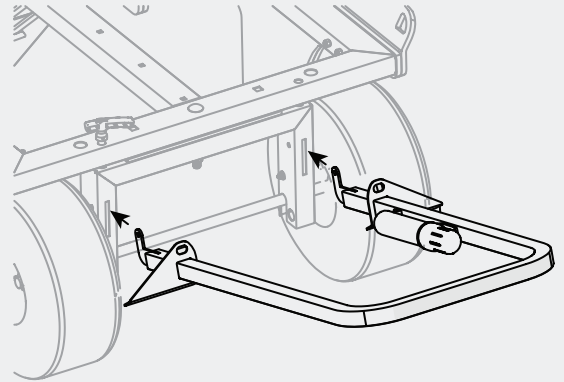
Safety Rail Source®

PORTABLE KART-A-RAIL™

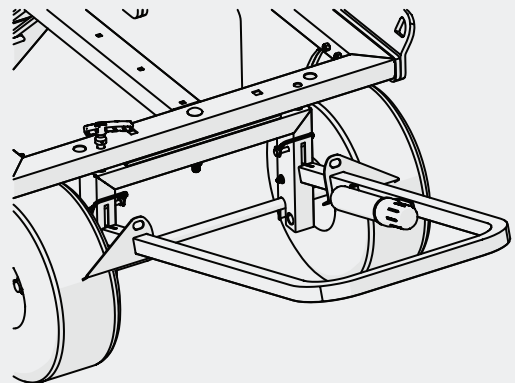
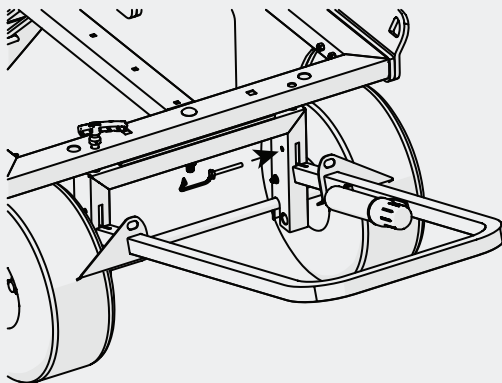
INSTALLATION INSTRUCTIONS

Your Kart-A-Rail may ship from the manufacturer with the tow handle not installed. If your model arrives without the tow handle installed follow the directions below.

1. Cut shipping strap or remove shipping material around the handle.
2. Align the tow handle with the end tabs in upward position.
3. Insert the tow handle into the slots on the front axle. Align the mounting holes with the handle.



4. Locate the two safety pins needed for the tow handle.
5. Open the end of the safety pin
6. Working from the inside of the axle, insert safety pin through the axle and tow handle coming out the opposite side of the axle. Secure the safety pin by placing the clip around the axle and pulling the clip over the tip of the safety pin.
7. Repeat for the other side tow handle.



Made in USA

INSTALLATION INSTRUCTIONS

Guardrail Rack

Step 1

Set the Kart-A-Rail brake in handle down position. Remove the brake safety pull pin, set it aside. Beginning with front guardrail rack, position the rack as described in the first illustration shown.

Step 2

Place 1/2" washer over the 3-1/2" hex bolt and insert the bolt from the top through the guardrail rack/cart. Repeat for the opposite side bolt/washer.

Step 3

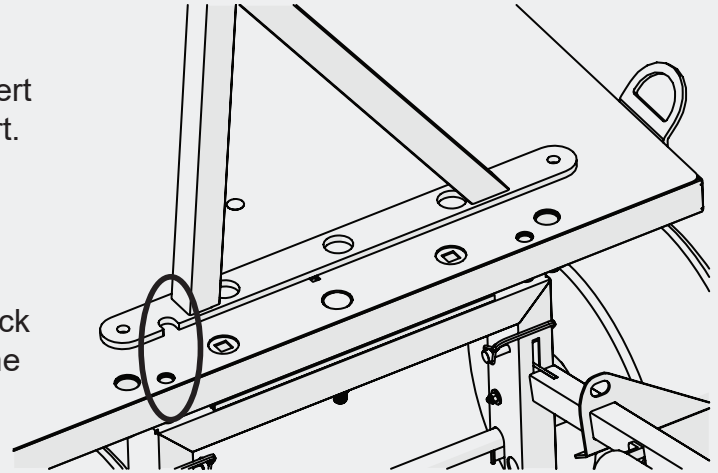
Working from the underside, slide a 1/2" fender washer over the bolt and hand screw the 1/2" nylock nut over bolt (See illustration below). Repeat for the opposite side.

Step 4

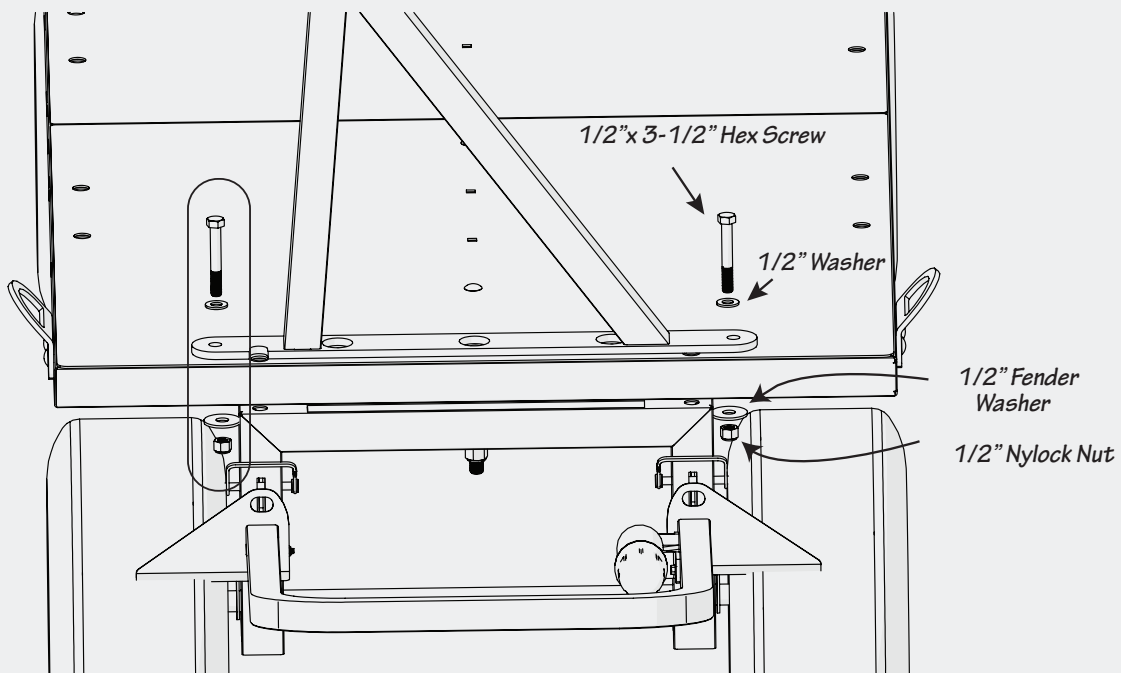
Using a 1/2" wrench, tighten both nylock nuts.

Step 5

Repeat steps 1-4 for opposite side guardrail rack



Note: The front guardrail rack must be positioned with the cut out notch aligning over the steering lock pin hole.



Made in USA

Safety Rail Source®

2570 Blvd of the Generals, Ste. 200

Norristown, PA 19403

(877) 723-3766

www.SafetyRailSource.com