



Safety Rail Source®

KEE® SELF-CLOSING GATE

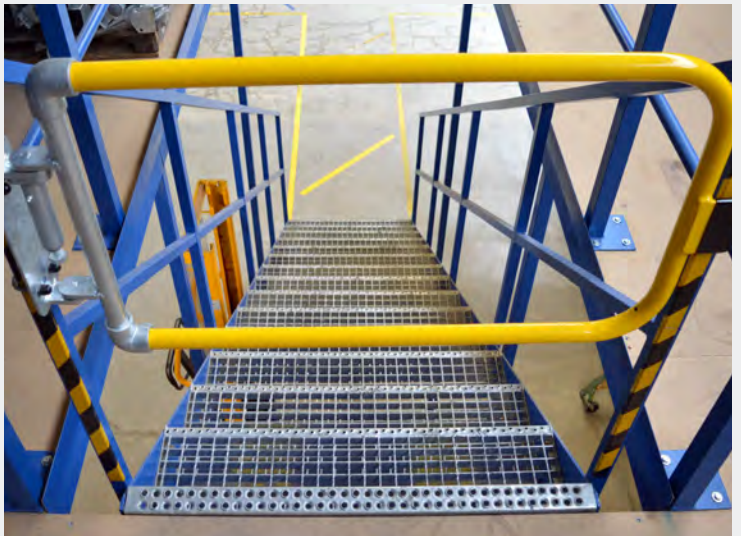
PRODUCT FLIER

The Kee® Self-Closing Safety Gate provides permanent fall protection for openings at ladder-ways, stairways, roof hatches, scaffolding, and other openings. The gate is spring loaded to automatically close behind the user providing a safe environment where no opening is left unprotected.

The Kee® Self-Closing Safety Gate is supplied as either hot-dipped galvanized or powder coated in safety yellow. The standard size is 3 feet wide and can be easily trimmed to size on-site. Standard 'U' bolts enable the gate to be attached quickly to existing supporting structures, posts or stringers, while an additional fixing pack allows the gate to be fixed to square, flat or angle uprights. The gate has also undergone extensive testing including life cycle and salt spray testing to ensure durability and reliability.

KEY FEATURES

- Life cycle tested up to 50,000 cycles of opening and closing
- Quick and easy to assemble
- Standard 3' gate can be cut to size
- Can withstand loads of up to 500lbs
- Galvanized or color coated in safety yellow
- Can be "retro-fitted" to existing structures
- Salt spray tested to ASTM B117-11-55 neutral solution over 200 hours
- Complies with North American OSHA, OBC, NBCC, as well as European code



Safety Rail Source®
2570 Blvd of the Generals, Ste. 200
Norristown, PA 19403 (877) 723-3766
www.SafetyRailSource.com