



Safety Rail Source®

KEEGUARD® RAILING

PRODUCT FLIER

KeeGuard® roof edge fall protection railing utilizes a counterbalance weighted system installed along the roof edge. It is a free standing, non-penetrating system and uses recycled PVC weights as ballasts. KeeGuard® Railing is designed for flat or low slope roofs. It can be used on slopes up to 1/12 pitch (5 degrees). The railings extend above the walking surface 42" and withstand a force of 200 pounds. There's no need for drilling welding, or fastening into your roof.

It's configuration accommodates varying angles, circular configurations, ladders and rooftop obstructions. KeeGuard® Railing exceeds OSHA Standard 1910.28(b)(13) and meets all North American and Canadian requirements.

Features

- OSHA compliant design
- Free-standing ballasted system
- "Green" reconstituted PVC weights
- Neoprene pad glued to the post base
- Accommodates angles and rooftop obstructions
- Kick plates available

Materials

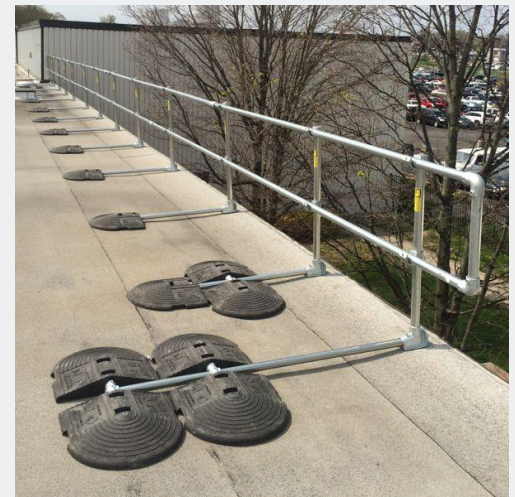
- Pipe is ASTM A53 1-1/2-inch schedule 40 galvanized steel
- Fittings are galvanized KeeKlamp malleable iron-type
- Mounting bases are galvanized steel with neoprene rubber pad
- Counterweights are recycled PVC



Hex Key For Easy Install



Fits any Roof Edge Design



"Green" Recycled Counter Weights

Safety Rail Source®
2570 Blvd of the Generals, Ste. 200
Norristown, PA 19403
(877) 723-3766
www.SafetyRailSource.com



Safety Rail Source®

KEEGUARD® RAILING

PRODUCT FLIER

Installation

- Installation is simple and requires minimal tools and experience
- Assemble PVC counter balance weights according to drawings with various base configuration options to suit your needs
- Install counterbalance assemblies into base fitting of post assemblies
- Install top and mid rails into drop fittings

*Note: 3 workers can install greater than 300 feet per day.
Shop drawings provided on request.*



Infill Panels (Optional)

KeeGuard® Infill Panels can be used with KeeGuard® standard, Standing Seam, Corrugated or other custom railing systems. KeeGuard® Infill Panels are pre-fabricated railings or screens with openings of less than 4". They prevent small Children and animals from falling through the railing. Standard panels are made of 4" x 4" wire mesh or 4" slats which are attached using U- shaped clips.



Kick Plates (Optional)

Kick Plates (Toe Board) are necessary when there is no parapet to protect objects from falling over the roof edge. The plates are 4" high to comply with OSHA standards and fasten to the base fitting. Kick Plates are compatible with all KeeGuard® railing products.



Safety Rail Source®
2570 Blvd of the Generals, Ste. 200
Norristown, PA 19403
(877) 723-3766
www.SafetyRailSource.com