

REQUIREMENTS

FABRIC TO COMPLETE CUSHION

- * 22cm x 22cm of light colour linen/cotton for background of applique or stitchery.
 - * 8 assorted fabrics - 15cm x 3cm.
 - * 20cm x 15cm of beige dot fabric for 1st border.
- Fabric from a roll not a bolt.*
- * 20cm x 64cm of beige linen/cotton 2nd border and outside border.
 - * 45cm x width (127cm) of beige dot linen for cushion back.

FABRIC FOR APPLIQUE

- * Girl teddy pieces - 13cm x 11cm.
- * Teddy dress - 11cm x 8cm.
- * Collar of dress - 6cm x 6cm.
- * Bow - 11cm x 6cm.
- * Small teddy - 16cm x 6cm.
- * Hearts - 5cm x 4 cm.

DMC Thread colours for applique design.
3828, 3031, Ecru, 3012, 309, 422, 3841

DMC Thread colours for stitchery design.
169, 3031, 422, 223, 224, 3858, Ecru, 3012, 3828.

BASIC SUPPLIES

- * Fabric pen for tracing stitchery designs.
- * Basic sewing supplies.
- * Vliesofix.

PREPARATION

Stitching is using 2 strands of thread unless stated.

TRACING STITCHERY DETAIL ONTO FABRIC - Do not reverse pattern when tracing stitching detail.

Using a window or light box, lay placement diagram down. Position fabric over design and tape in place. Using a fabric pen, transfer detail to be stitched onto your fabric.

Iron stabilizer to back of fabric panel before stitching.

APPLIQUE INSTRUCTIONS

PATTERN PIECES FOR APPLIQUE DESIGNS HAVE BEEN REVERSED

Referring to pattern sheet and using a pencil, trace around the shape onto the paper side of the vliesofix.

Roughly cut out shapes about 2mm out from the traced line and using a hot iron, press the traced shape onto the wrong side of the desired fabric. Cut out shape on the traced line. Trace detail to be stitched onto your shape.

BAKING PAPER METHOD FOR APPLIQUE PLACEMENT

* Place a piece of baking paper or a Teflon applique mat (available at your patchwork shop) over the pattern/placement sheet. Being able to see the pattern through the paper, allows you to position the applique pieces accurately.

* Peel away the backing paper of the vliesofix from each piece. Place each piece (right side of fabric up) in numbered order over the corresponding shape. Overlap the pieces where necessary.

*Press after placing each piece using a hot iron. Once all the pieces are placed, pressed and cool, peel the design carefully from the baking paper. Centre onto the background fabric, right side of fabric up, and iron.

*Blanket stitch around all shapes using two strands of embroidery thread, matching the colour of the thread to each fabric.



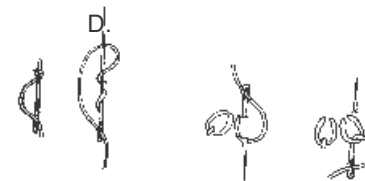
Artsmart Craft Cottage

*Designs by
Libby Richardson*

EMAIL artsmartlibby@bigpond.com
www.artsmartcraftcottage.com.au
 Facebook - artsmartcraftcottage-Libby Richardson
 Instagram - Libby Richardson

COPYRIGHT 2018 LIBBY RICHARDSON

All rights reserved. No part of this pattern may be reproduced by any means whatsoever except to copy pattern for personal use only.



French Knot Lazy Daisy Stitch



Chain stitch Satin stitch Back Stitch

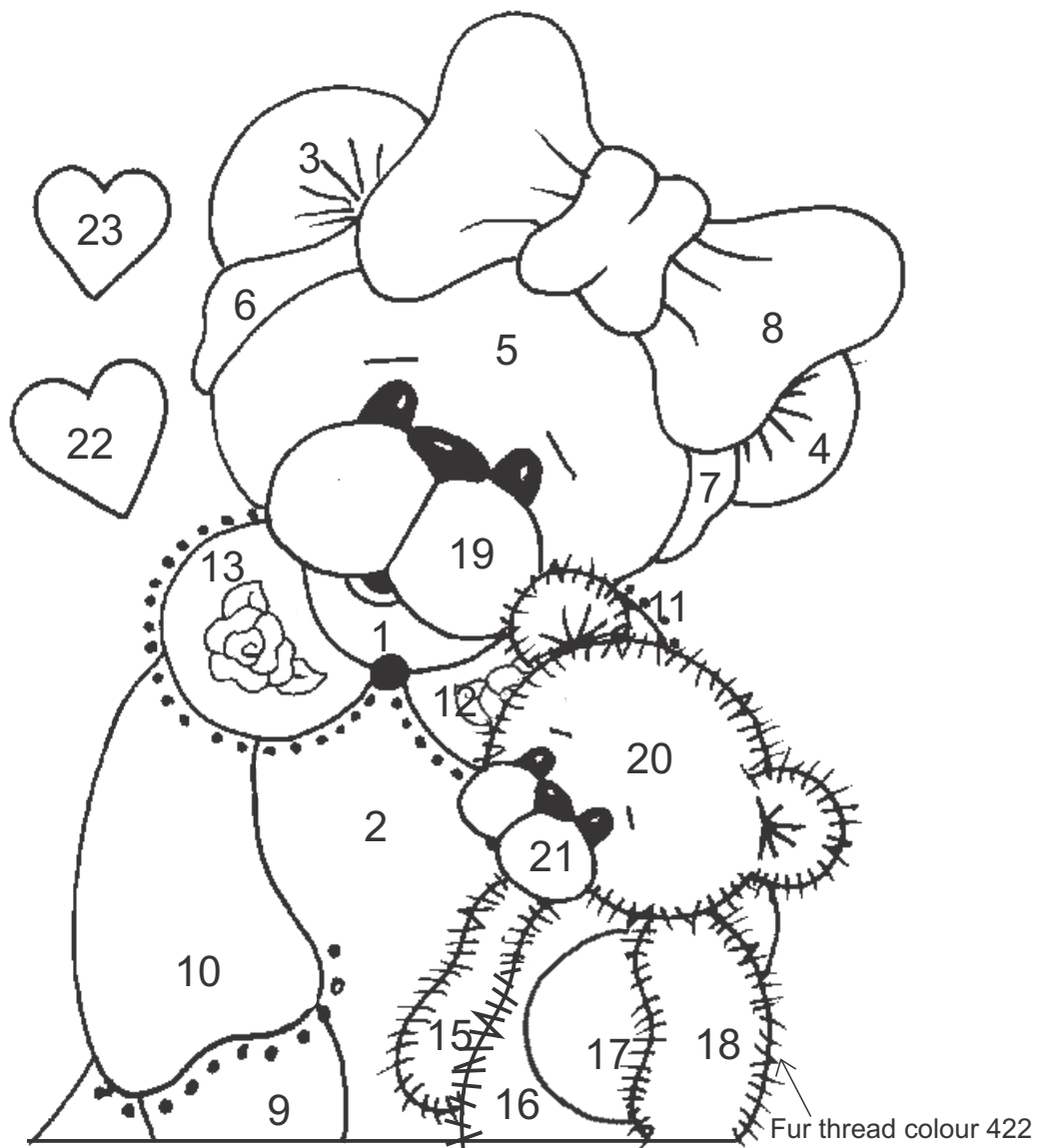
Stitchery instructions

- BS - Back stitch
- RS - Running stitch
- SS - Satin stitch
- LDS - Lazy daisy stitch
- CS - Chain stitch
- FN - French knot

Applique Pattern

Cut size of background fabric - 7½" x 7½"

Cut back size after applique is complete - 6½" x 6½"



* Straight stitch instead of Blanket stitch around small teddy pieces using 2 strands of thread.

BLANKET STITCH COLOURS

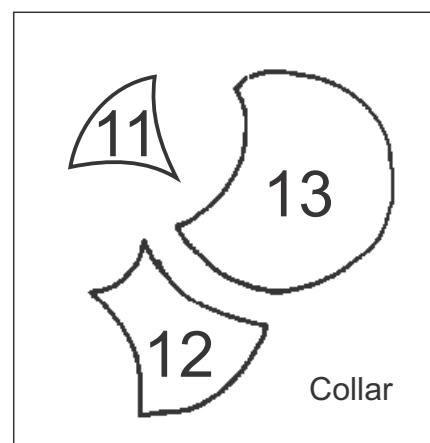
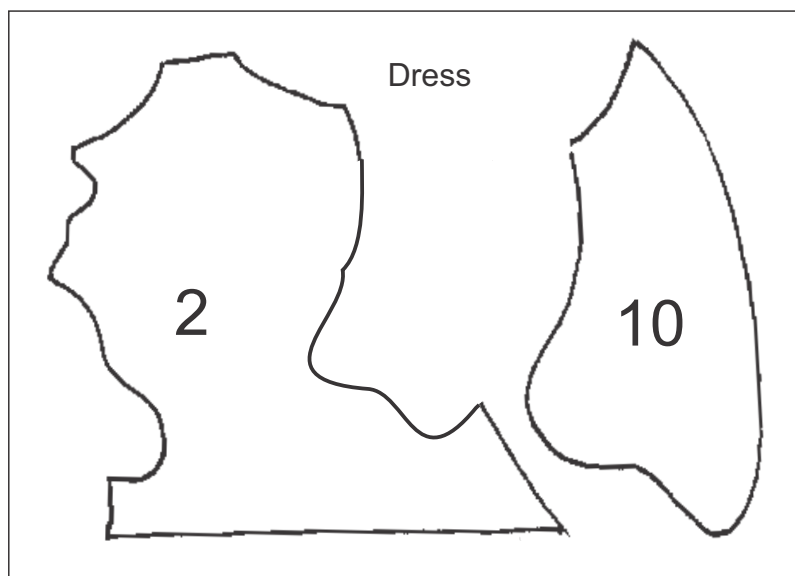
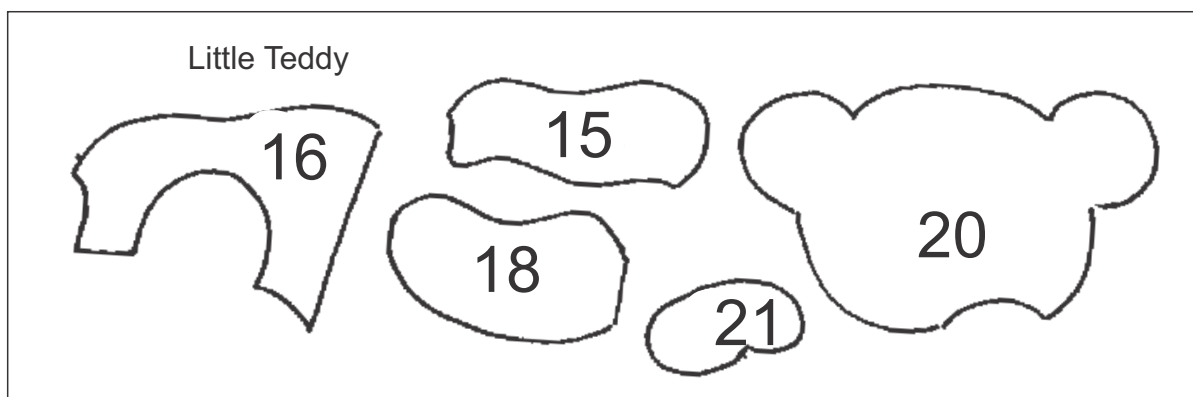
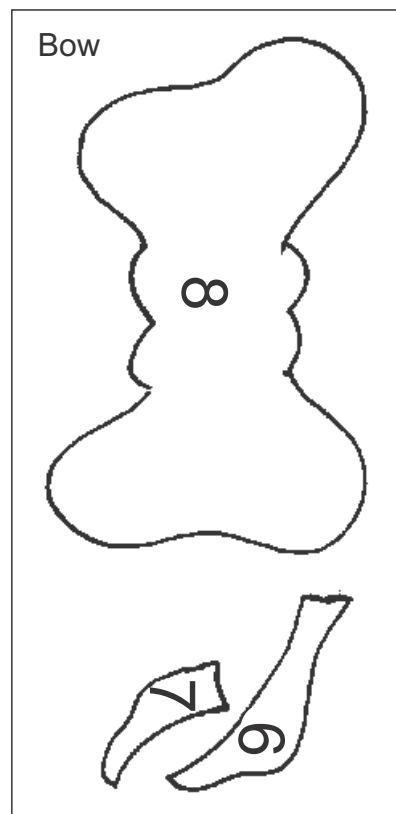
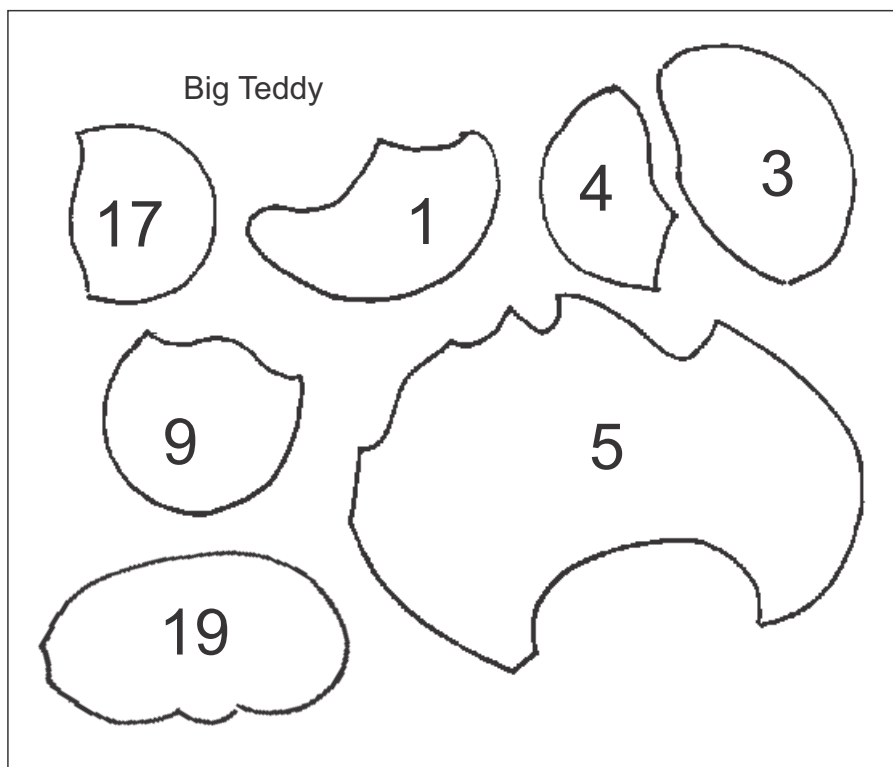
Around Teddy pieces - 3828.
Around dress - 3841.
Around collar - Ecu.
Around hearts - 309.
Around bow - 3733.

STITCHING DETAIL

Eyes, nose, mouth and inside ears - Satin stitch using 3031.
Line under nose - Back stitch using 3828.
Eye brows - Straight stitch using 3828.
Highlight on nose and eyes - small stitches using Ecu.
Dots on bottom of sleeves - French knot using 3841.
Dots on collar - French Knots Ecu.
Rose on collar - Rose petals - BS 223 *Leaves BS - 3012.

Sew lace bow onto little Ted.

REVERSED APPLIQUE PIECES
Trace shapes onto vliesofix



Stitchery Pattern

Cut back size after stitching is complete - 6½" x 6½"



LITTLE TEDDY

*Fur and eye brows - Straight stitch 422

* Inside of ears - Straight stitch 3031

*For both teddies - Eyes, nose and mouth - SS 3031, Highlight - Ecru

GIRL TEDDY

*Fur and eye brows - Straight stitch 3828

* Inside of ears - Straight stitch 3031

*Dress - BS 223 *Dots on dress - FN 223 *Button - SS 3858

*Bow outline - BS 169 * Lines on bow - BS 169 1 thread.

*Little dots along sleeve of dress - FN 223

*Collar - BS 224 *Little dots along collar - LDS 224

*Rose petals - BS 223 *Leaves BS - 3012

*Outline of hearts - BS 3858 *Line inside hearts RS - 1 thread 3858

*Make a bow using thread and stitch to Little Ted's head.

© Designed for you by Libby Richardson

INSTRUCTIONS FOR CUSHION

CUTTING GUIDE

Read all instructions carefully before beginning project. A 1/4" seam allowance is used throughout.

FRONT OF CUSHION

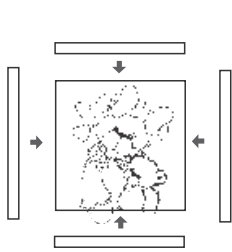
Background cream linen/cotton for applique - cut 1 x 7 1/2" x 7 1/2" square. When applique is finished trim back to 6 1/2" x 6 1/2".

1st border (beige dot fabric) - cut 2 x 1" x 6 1/2" strips for top and bottom border, cut 2 x 1" x 7 1/2" strips for side borders.

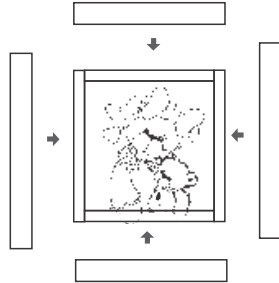
2nd border (linen/cotton) - cut 2 x 1 1/2" x 7 1/2" strips for top and bottom border, cut 2 x 1 1/2" x 9 1/2" strips for side borders.

3rd border - Patchwork - cut 8 x 1 1/2" strips from assorted fabric.

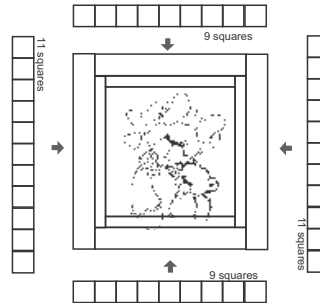
Outside border (linen/cotton) - cut 2 x 15 1/2" x 3" strips for top and bottom border, cut 2 x 20 1/2" x 3" strips for side borders.



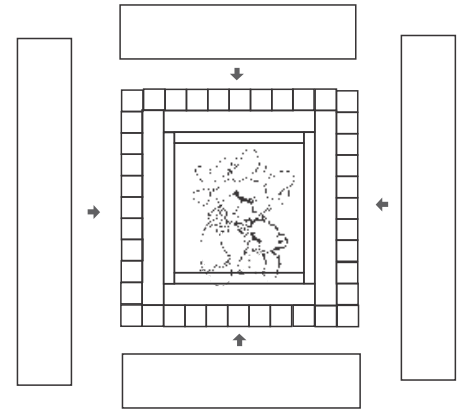
1. 1st border - Sew top and bottom border in place. Sew side borders in place.



2. 2nd border - Sew top and bottom border in place. Sew side borders in place.



3. 3rd border - Sew the eight 1 1/2" strips together. Cut strips at 1 1/2" wide. - Make two strips of 9 squares for top and bottom border. Sew top and bottom border in place. Make two strips of 11 squares for the side borders. Sew side borders in place.



4. Sew top and bottom outside border in place. Sew side borders in place.

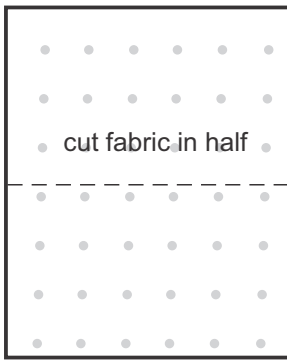
Optional - Quilt cushion top as desired.

BACK OF PILLOW - Linen with dots

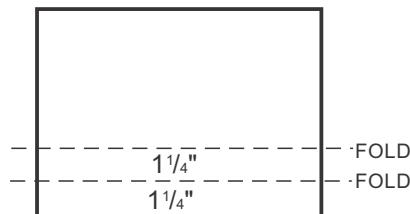
A.



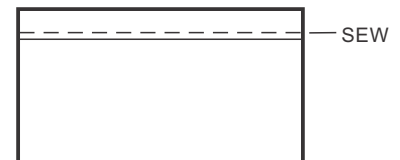
B.



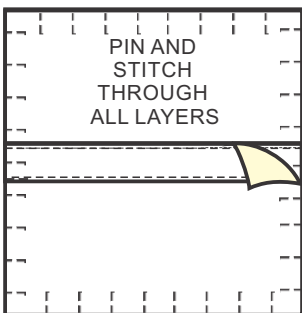
B.



Take one of the back pieces and fold the edge over by 1 1/4". Iron this flat. Turn it over another 1 1/4" and iron that down to make the double folded hem. Pin this down. Repeat for the second piece.



Machine sew down the edges of your folded seams.



Lay one back piece right side facing down onto the front piece, aligning the top edge. The un-hemmed side edge should line up with the outer edge of the cushion front. Take the second back piece and place it right side facing down onto the other fabric pieces. Align the edges as before. The un-hemmed edge needs to line up with the outer edge of the cushion front. There will be an overlap in the middle. (This forms the envelope) Pin this into position to hold everything in place. Sew around all edges, trim a little fabric off all four corners. Turn cushion to right side.

CUSHION INSERT

To make the pillow liner cut two pieces of homespun, each 16" square. Pin together and stitch a 1/4" seam around the outside, leaving a 5" gap in one side for stuffing. Turn right sides out and press. Stuff with toy stuffing and stitch the opening closed. Insert liner into cushion.