



# EZ Door Sign

2.9 Inch E-Paper Display

## USER MANUAL



San Technology, Inc.

6210 Marindustry Dr., San Diego, CA 92121 USA

Tel: +1-858-278-7300

Email: [cs@santek.us](mailto:cs@santek.us)

# Table of contents

## **1 GENERAL DESCRIPTION ..... 3**

1.1 FEATURES

1.2 INTENDED APPLICATIONS

## **2 HOW TO USE ..... 4-5**

2.1 Button settings

2.2 Charging

2.3 LED Light Indications

2.4 Mounting

## **3 Frequently Asked Questions (FAQ) &..... 5-6 Trouble Shooting**

## 1. General Description

The Santek EZ Door Sign, 2.9 Inch E-Paper Display product is designed to indicate room status with super low energy consumption, in a simple few clicks and easy mounting. E-paper display only consumes power when display content changes and no wiring are needed.

### 1.1 Features

Display size: 2.9"

Housing color options: Black/White/Grey

Battery: 230mAh (rechargeable)

Message patterns:



### 1.2 Intended Applications: Indoor use;

At work: Meeting and conference rooms, individual office; IT room, et al

At home: any rooms

## 2 How to use?

### 2.1 Button Settings

- ① ON / OFF: Press and hold (2~3 seconds)
- ② To change to desired language by clicking twice
- ③ To change to desired message by clicking once

Please note: It is normal that the display will flicker for 10~15 seconds while refreshing the content.

#### ④ POWR OFF – 2 ways:

- 1) Press and hold (2~3 seconds)
- 2) It will turn itself off after 2~3 minutes

Last message will stay on when off but no power is consumed at this state

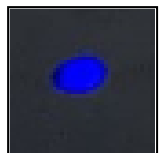
### 2.2 Charging

Connect to any power source via a USB-C cable (not included).

### 2.3 LED light indications



DARK: Power is OFF



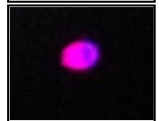
BLUE: Power is ON  
As display content changes, blue light blinks;  
after display content change, blue light resumes stable.



RED: Power is OFF  
Battery is being charged



GREEN: Power is OFF  
Battery is charged to full capacity



PURPLE (BLUE+RED): Power is ON while battery is being charged



LIGHT BLUE (BLUE+GREEN): Power is ON while battery is fully charged

ON / OFF : Long time click  
言語変更 : Double click  
表示内容選択 : Click

**Santek™**



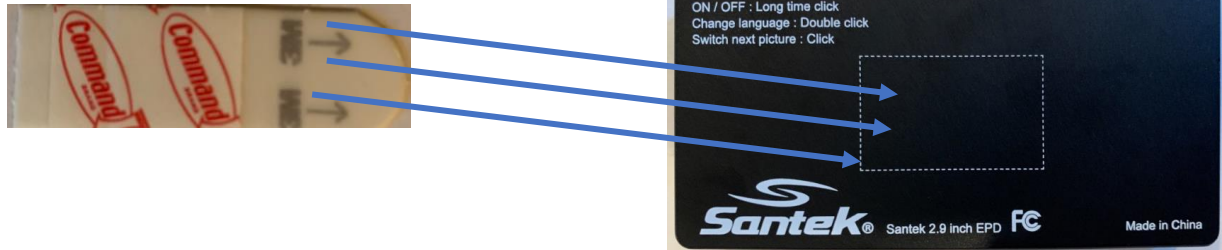
LED light Indicator

USB-C charging port

## 2.4 Mounting

Use 3M Double-sided tape (included).

Place the red font's side to the area marked by dotted line, on the back of the product.



Place the black font's side to wall/door.



## 3 Frequently Asked Questions (FAQ) & Trouble Shooting

Q1: It takes some time to completely change display contents and the screen keeps flickering in between. Is it normal?

A: This is normal. The display has very low power consumption, and only consumes power during refresh (display content change).

Below are some photo examples during refresh.



Pale font color

Overlapping darken screen flickering

Mixed language

Q2: Is there a way to customize display messages/colors?

A: Messages and colors are pre-programmed and cannot be customized.

Q3: The display freezes. I cannot change the contents.

A: If the display LED light indicator is dark, it is not powered on. Make sure the product is powered on by press and hold the button for 2~3 seconds and release.

If the product is powered on (with blue LED indicator light) but frozen, please wait until the LED light indicator is off; and retry to power on.

If the display does not power on, the battery needs to be charged.

Q4: How often should I charge the battery?

A: Our door sign is designed to work for 6 months under normal use without charging. Depending on how frequently users change the messages as that is the only time it consumes power when refreshing. You may need to charge more often if that is the case.

Q5: I need to replace the double sided tape. What model do you recommend?

A: We recommend 3M Command Strips (small size) or equivalent which is detachable on different surfaces.