



Lincraft

LADIES CARDIGANS & VESTS

\$4.99

CLUB LINCRAFT MEMBERS
PAY ONLY \$2.99

VEST WITH GARTER STITCH EDGING

Intermediate knit



MEASUREMENTS

Size		S	M	L	XL
		8-10	12-14	16-18	20-22
Fits bust	cm	80	90	100	110
Garment Measures Length (approx)	cm	80	90	100	110
	cm	43	44	45	46

YARN REQUIRED

Lincraft Surprise 100g balls	3	4	4	5
-------------------------------------	----------	----------	----------	----------

NEEDLES

- 5.5mm knitting needles
- 5.5mm circular knitting needle (at least 60cm long)
- Wool needle for sewing up

TENSION

17 sts and 23 rows to 10cm over stocking st, using 5.5mm needles.

BACK

Using a pair of 5.5mm needles, cast on 70 (78-88-96) sts.
Work 42 rows stocking st.

Shape Armholes

Cast off 3 (4-6-7) sts at beg of next 2 rows ... 64 (70-76-82) sts.
Dec one st at each end of next row, then every alt row until 58 (62-66-70) sts rem.
Work 31 rows stocking st.

Shape Back Neck

Next row: K20 (21-22-24), cast off next 18 (20-22-22) sts, knit to end.
Cont on last 20 (21-22-24) sts.
Dec one st at neck edge in every alt row until 17 (18-19-21) sts rem.
Work 2 rows.

Shape Shoulder

Cast off 6 (6-6-7) sts at beg of next and alt row.
Work 1 row.
Cast off rem 5 (6-7-7) sts.
With wrong side facing, join yarn to rem sts.
Dec one st at neck edge in every alt row until 17 (18-19-21) sts rem.
Work 1 row.

Shape Shoulder

Work as for other shoulder shaping.

LEFT FRONT

Using a pair of 5.5mm needles, cast on 13 (16-21-24) sts.
Work 4 rows stocking st.
Inc one st at end of next row, then every alt row until there are 24 (29-34-39) sts, then in every 4th row until there are 27 (31-36-40) sts.
Work 5 rows stocking st.

Shape Armhole and Front Slope

Cast off 3 (4-6-7) sts at beg of next row ... 24 (27-30-33) sts.
Dec one st at armhole edge in every alt row 3 (4-5-6) times, AT SAME TIME dec one st at front edge in 2nd row, then every 12th (10th-8th-8th) row 1 (2-2-1) time/s, then every 14th (12th-10th-10th) row 2 (2-3-4) times ... 17 (18-19-21) sts.
Work 3 (1-1-1) row/s.

Shape Shoulder

Cast off 6 (6-6-7) sts at beg of next and alt row.
Work 1 row.
Cast off rem 5 (6-7-7) sts.

RIGHT FRONT

Using a pair of 5.5mm needles, cast on 13 (16-21-24) sts.
Work 4 rows stocking st.
Inc one st at beg of next row, then every alt row until there are 24 (29-34-39) sts, then in every 4th row until there are 27 (31-36-40) sts.
Work 6 rows stocking st.

Shape Armhole and Front Slope

Cast off 3 (4-6-7) sts at beg of next row ... 24 (27-30-33) sts.
Dec one st at armhole edge in next row, then every alt row 2 (3-4-5) times, AT SAME TIME dec one st at front edge in next row, then every 12th (10th-8th-8th) row 1 (2-2-1) time/s, then every 14th (12th-10th-10th) row 2 (2-3-4) times ... 17 (18-19-21) sts.
Work 4 (2-2-2) rows.

Shape Shoulder

Cast off 6 (6-6-7) sts at beg of next and alt row.
Work 1 row.
Cast off rem 5 (6-7-7) sts.

ARMHOLE BANDS

Join shoulder and side seams.
With right side facing and using 5.5mm circular needle, knit up 76 (82-90-96) sts around armhole edge.
Knit 6 rounds.
Cast off loosely knitways.

EDGING FOR BACK AND FRONTS

With right side facing and using 5.5mm circular needle, beg at right side seam and knit up 12 (15-20-23) sts along right front cast on edge, knit up 40 sts along right front to beg of front slope shaping, knit up 35 (36-38-39) sts along right front to shoulder, knit up 6 sts along back neck shaping, knit up 17 (19-21-21) sts along back neck, knit up 6 sts along back neck shaping, knit up 35 (36-38-39) sts along left front from shoulder to beg of front slope shaping, knit up 40 sts along left front to cast on edge, knit up 12 (15-20-23) sts along left front cast on edge, then knit up 64 (72-80-88) sts along back cast on edge ... 267 (285-309-325) sts.

1st round: Purl.

2nd round: Knit.

Rep 1st and 2nd rounds until edging measures 5cm, ending with a purl round.

Next round: K10 (13-18-21), [inc in next st, K2] 3 times, knit to last 81 (92-105-116) sts, [inc in next st, K2] 3 times, knit to end ... 273 (291-315-331) sts.

Rep 1st and 2nd rounds until edging measures 10cm from beg, ending with a purl round.

Cast off loosely knitways.

FINISHING

Sew in all ends.

CIRCULAR SPIRAL JACKET

Intermediate knit

MEASUREMENTS

Size		S	M	L	XL
		8-10	12-14	16-18	20-22
Fits bust	cm	80	90	100	110
Garment diameter (approx)	cm	90	100	110	120
Sleeve Length (approx)	cm	43	43	43	43

YARN REQUIRED

Lincraft Surprise 100g balls	S	M	L	XL
	6	7	7	8

NEEDLES

- A set of 5.5mm double-pointed knitting needles.
- 5.5mm circular knitting needle (see Note below)
- Wool needle for sewing in ends

TENSION

17 sts and 23 rows to 10cm over stocking st, using 5.5mm needles.

NOTE

For ease of knitting we suggest having a 5.5mm circular knitting needle in each of the following lengths: 2m, 1m and 60cm. Begin with the 2m long needle then as the stitches decrease, change to the 1m and later to the 60cm length. When stitches no longer fit comfortably on the 60cm needle, change to a set of double-pointed needles.



BODY

Using 5.5mm circular needle cast on 468 (510-560-612) sts.
Place a marker at beg of round and being careful not to twist sts, work as folls:

1st round: Purl.

2nd round: Knit.

Rep 1st and 2nd rounds 3 times.

Beg Dec

1st round: * K10 (13-14-15), K2tog, rep from * to end ... 429 (476-525-576) sts.

Knit 9 rounds.

11th round: * K9 (12-13-14), K2tog, rep from * to end ... 390 (442-490-540) sts.

Knit 9 rounds.

21st round: * K8 (11-12-13), K2tog, rep from * to end ... 351 (408-455-504) sts.

Knit 9 rounds.

31st round: * K7 (10-11-12), K2tog, rep from * to end ... 312 (374-420-468) sts.

Knit 9 rounds.

41st round: * K6 (9-10-11), K2tog, rep from * to end ... 273 (340-385-432) sts.

Knit 4 (7-9-9) rounds.

Sizes M, L and XL Only

Next round: * K (8-9-10), K2tog, rep from * to end ... (306-350-396) sts.

Knit (2-5-9) rounds.

Size XL Only

Next round: * K9, K2tog, rep from * to end ... 360 sts.

Knit 1 round.

All Sizes - Cast Off for Armholes

Next round: K28 (32-36-40), cast off 36 (38-40-42) sts, K145 (166-198-196), cast off 36 (38-40-42) sts, knit to end.

Next round: Knit, casting on 36 (38-40-42) sts over sts cast off on previous round.

Sizes L and XL Only

Knit (2-4) rounds.

Next round: * K8, K2tog, rep from * to end ... (315-324) sts.

Sizes M, L and XL Only

Knit (3-7-7) rounds.

Next round: * K7, K2tog, rep from * to end ... (272-280-288) sts.

Knit 7 rounds.

Next round: * K6, K2tog, rep from * to end ... (238-245-252) sts.

All Sizes

Knit 3 (7-7-7) rounds.

Next round: * K5, K2tog, rep from * to end ... 234 (204-210-216) sts.

Knit 7 (7-5-5) rounds.

Next round: * K4, K2tog, rep from * to end ... 195 (170-175-180) sts.

Knit 7 (5-5-5) rounds.

Next round: * K3, K2tog, rep from * to end ... 156 (136-140-144) sts.

Knit 7 (5-4-5) rounds.

Next round: * K2, K2tog, rep from * to end ... 117 (102-105-108) sts.

Knit 5 (4-3-5) rounds.

Next round: * K1, K2tog, rep from * to end ... 78 (68-70-72) sts.

Knit 5 (3-3-4) rounds.

Next round: * K2tog, rep from * to end ... 39 (34-35-36) sts.

Knit 4 (3-3-3) rounds.

Next round: K1 (0-1-0), * K2tog, rep from * to end ... 20 (17-18-18) sts.

Knit 3 rounds.

Next round: K0 (1-0-0), * K2tog, rep from * to end ... 10 (9-9-9) sts.

Break off yarn, run end through rem sts, draw up tightly and fasten off securely.

SLEEVES

With right side facing and using 5.5mm circular needle, knit up 72 (74-78-82) sts around one armhole opening, beg and ending at underarm.

Note: When sts no longer fit comfortably on circular needle, change to a set of double-pointed needles. Place a marker at beg of round and being careful not to twist sts, work as folls:

Knit every round until work measures 5cm (or adjust for total sleeve length required).

Cont to knit every round and dec one st at beg and end of next round, then every 6th round until 58 (60-72-78) sts rem, then every 4th round until 38 (40-40-42) sts rem.

Knit 4 rounds.

Next round: Knit and dec 2 sts evenly around ... 36 (38-38-40) sts.

Next round: Purl.

Next round: Knit.

Rep last 2 rounds twice.

Cast off loosely purlwise.

FINISHING

Sew in all ends. Fold back collar.

BACK

Using 4mm circular needle, cast on 145 (157-169-181) sts.

Note: A circular needle is used to accommodate the large number of sts. Work backwards and forwards in rows, not rounds.

Beg Patt

1st row: P1, * K5, P1, rep from * to end.

2nd row: K1, * yfwd, K1, sl 1 purlways, K2tog, pssso, K1, yfwd, K1, rep from * to end.
Rep 1st and 2nd rows twice.

Work 4 rows stocking st.

11th row: K1, * M1, K1, K2tog, K3, K2tog, K1, M1, K3, rep from * to end ... 145 (157-169-181) sts.

Work 5 rows stocking st.

17th row: K1, * K1, M1, (K1, K2tog) twice, K1, M1, K4, rep from * to end ... 145 (157-169-181) sts.
Work 5 rows stocking st.

23rd row: K1, * K3, K3tog, K6, rep from * to end ... 121 (131-141-151) sts.

Work 5 rows stocking st.

29th row: K1 (12-7-8), * K2tog, K3 (3-4-5), rep from * to last 0 (9-2-3) sts, K0 (9-2-3) ... 97 (109-119-131) sts.

Change to a pair of 4mm needles.

Cont in stocking st, beg with a purl row, until work measures 35cm from beg, ending with a purl row.

Shape Armholes

Cast off 5 (7-8-10) sts at beg of next 2 rows ... 87 (95-103-111) sts.

Dec one st at each end of next row, then every alt row until 77 (81-87-93) sts rem.

Work 53 (51-53-53) rows.

Shape Shoulders

Cast off 7 (8-8-9) sts at beg of next 4 rows, then 8 (7-9-9) sts at beg of next 2 rows.

Cast off rem 33 (35-37-39) sts.

LEFT FRONT

Using a pair of 4mm needles, cast on 61 (73-73-85) sts.

Beg Patt

1st row: P1, * K5, P1, rep from * to end.

2nd row: K1, * yfwd, K1, sl 1 purlways, K2tog, pssso, K1, yfwd, K1, rep from * to end.
Rep 1st and 2nd rows twice. **

Beg Front of Pocket

7th row: K50 (51-51-62), turn.

8th row: P29, turn.

Cont on these 29 sts for pocket.

Work 2 rows stocking st.

11th row: K4, * M1, K1, K2tog, K3, K2tog, K1, M1, K3, rep from * to last st, K1 ... 29 sts.

Work 5 rows stocking st.

17th row: K4, * K1, M1, (K1, K2tog) twice, K1, M1, K4, rep from * to last st, K1 ... 29 sts.

Work 5 rows stocking st.

23rd row: K4, * K3, K3tog, K6, rep from * to last st, K1 ... 25 sts.

Work 5 rows stocking st.

29th row: K1 (1-1-0), * K2tog, K2 (2-4-3), rep from * to end ... 19 (19-21-20) sts.

Purl 1 row.

Cast off these 19 (19-21-20) sts.

With right side facing, join yarn to beg of second group of sts, cast on 29 sts (for back of pocket), knit to end ... 61 (73-73-85) sts.

Work 3 rows stocking st, beg with a purl row.

5th row: K1, * M1, K1, K2tog, K3, K2tog, K1, M1, K3, rep from * to end ... 61 (73-73-85) sts.
Work 5 rows stocking st.

11th row: K1, * K1, M1, (K1, K2tog) twice, K1, M1, K4, rep from * to end ... 61 (73-73-85) sts.

Work 5 rows stocking st.

17th row: K1, * K3, K3tog, K6, rep from * to end ... 51 (61-61-71) sts.

Work 5 rows stocking st.

23rd row: K7 (1-1-1), * K2tog, K2 (2-4-3), rep from * to end ... 40 (46-51-57) sts.

Cont in stocking st, beg with a purl row, until work measures same as Back to beg of armhole shaping, ending with a purl row.

Shape Armhole and Front Slope

Cast off 5 (7-8-10) sts at beg of next row ... 35 (39-43-47) sts.

Dec one st at armhole edge in every alt row 5 (7-8-9) times, AT SAME TIME dec one st at front edge in 2nd row, then every 8th (6th-6th-6th) row 5 (1-3-6) time/s, then every 10th (8th-8th-8th) row 2 (7-6-4) times ... 22 (23-25-27) sts.
Purl 1 row.

Shape Shoulder

Cast off 7 (8-8-9) sts at beg of next and alt row.
Work 1 row.

Cast off rem 8 (7-9-9) sts.

RIGHT FRONT

Work as for Left Front to **.

Beg Front of Pocket

7th row: K40 (51-51-52), turn.

8th row: P29, turn.

Cont on these 29 sts for pocket.

Work 2 rows stocking st.

11th row: K4, * M1, K1, K2tog, K3, K2tog, K1, M1, K3, rep from * to last st, K1 ... 29 sts.

Work 5 rows stocking st.

17th row: K4, * K1, M1, (K1, K2tog) twice, K1, M1, K4, rep from * to last st, K1 ... 29 sts.

Work 5 rows stocking st.

23rd row: K4, * K3, K3tog, K6, rep from * to last st, K1 ... 25 sts.

Work 5 rows stocking st.

29th row: K1 (1-1-0), * K2tog, K2 (2-4-3), rep from * to end ... 19 (19-21-20) sts.

Purl 1 row.

Cast off these 19 (19-21-20) sts.

With right side facing, join yarn to beg of second group of sts, cast on 29 sts (for back of pocket), knit to end ... 61 (73-73-85) sts.

Work 3 rows stocking st, beg with a purl row.

5th row: K1, * M1, K1, K2tog, K3, K2tog, K1, M1, K3, rep from * to end ... 61 (73-73-85) sts.

Work 5 rows stocking st.

11th row: K1, * K1, M1, (K1, K2tog) twice, K1, M1, K4, rep from * to end ... 61 (73-73-85) sts.

Work 5 rows stocking st.

17th row: K1, * K3, K3tog, K6, rep from * to end ... 51 (61-61-71) sts.

Work 5 rows stocking st.

23rd row: K7 (1-1-1), * K2tog, K2 (2-4-3), rep from * to end ... 40 (46-51-57) sts.

Cont in stocking st, beg with a purl row, until work measures same as Back to beg of armhole shaping, ending with a purl row.

Work 1 row.

Shape Armhole and Front Slope

Cast off 5 (7-8-10) sts at beg of next row ... 35 (39-43-47) sts.

Dec one st at armhole edge in next row, then every alt row 4 (6-7-8) times, AT SAME TIME dec one st at front edge in next row, then every 8th (6th-6th-6th) row 5 (1-3-6) time/s, then every 10th (8th-8th-8th) row 2 (7-6-4) times ... 22 (23-25-27) sts.
Work 2 rows.

Shape Shoulder

Cast off 7 (8-8-9) sts at beg of next and alt row.
Work 1 row.

Cast off rem 8 (7-9-9) sts.

SLEEVES

Using a pair of 4mm needles, cast on 49 (55-55-55) sts.

Beg Patt

1st row: P1, * K5, P1, rep from * to end.

2nd row: K1, * yfwd, K1, sl 1 purlways, K2tog, pssso, K1, yfwd, K1, rep from * to end.
Last 2 rows form patt.

Cont in patt until work measures 5cm from beg, ending with a 2nd row.

Working in stocking st for rem, inc one st at each end of 3rd row, then every 6th (6th-4th-4th) row until there are 53 (59-63-87) sts, then every 8th (8th-6th-6th) row until there are 75 (81-91-99) sts.
Cont without shaping until work measures 43cm (or length desired) from beg, ending with a purl row.

Shape Top

Cast off 3 (4-4-5) sts at beg of next 2 rows ... 69 (73-83-89) sts.

Dec one st at each end of next row, then every alt row until 29 (33-47-55) sts rem, then every row until 15 (15-17-17) sts rem.

Cast off.

RIGHTFRONTBANDANDSHAWLCOLLAR

Using a pair of 4mm needles, cast on 19 sts.

Beg Patt

1st row: P1, * K5, P1, rep from * to end.

2nd row: K1, * yfwd, K1, sl 1 purlways, K2tog, pssso, K1, yfwd, K1, rep from * to end.
Last 2 rows form patt.

Cont in patt until work measures length required to fit along front edge to beg of front slope shaping, working last row on wrong side. ***

Shape Collar

Keeping patt correct, inc one st at end of next row, then every 4th row until there are 21 (23-23-25) sts, then every alt row until there are 43 sts.
Work 3 rows patt.

Beg Turnings

Note: When turning, bring yarn to front of work, slip next st onto right hand needle, ybk, slip st back onto left hand needle, then turn and proceed as instructed. This avoids holes in work.

1st row: Patt 36, turn.

2nd row: Patt to end.

3rd row: Patt across all sts to end.

4th row: Patt to end.

Rep last 4 rows 3 (3-4-4) times.

Cast off loosely.

LEFTFRONTBANDANDSHAWLCOLLAR

Work as for Right Front Band and Shawl Collar to ***.

Shape Collar

Keeping patt correct, inc one st at beg of next row, then every 4th row until there are 21 (23-23-25) sts, then every alt row until there are 43 sts.
Work 2 rows patt.

Beg Turnings

1st row: Patt 36, turn.

2nd row: Patt to end.

3rd row: Patt across all sts to end.

4th row: Patt to end.

Rep last 4 rows 3 (3-4-4) times.

Work 1 row patt.

Cast off loosely.

FINISHING

Using mattress st, join shoulder, side and sleeve seams. Sew in sleeves. Sew side edges of pockets in position. Using a flat seam, join cast off edges of shawl collar pieces tog. Sew front bands and shawl collar in position. Sew on button. Sew in all ends.

CARDIGAN

WITH
LACE BANDS

Intermediate knit



MEASUREMENTS

Size		S	M	L	XL
		8-10	12-14	16-18	20-22
Fits bust	cm	80	90	100	110
Garment Measures (at bust)	cm	87	97	107	117
Length (approx)	cm	56	57	58	59
Sleeve length	cm	43	43	43	43

YARN REQUIRED

Lincraft Supersoft 8ply					
50g balls		14	16	18	19

NEEDLES

- 4mm knitting needles
- 4mm circular knitting needle
- Wool needle for sewing up

REQUIREMENTS

- 1 button

TENSION

22 sts and 30 rows to 10cm over stocking st, using 4mm needles.

CABLE CARDIGAN

WITH SIDE SHAPING
AND SHAWL
COLLAR

Intermediate knit



MEASUREMENTS

Size	S	M	L	XL
	8-10	12-14	16-18	20-22
Fits bust	80	90	100	110
Garment Measures (at bust)	90	100	110	120
Length (approx)	58	59	60	61
Sleeve length	43	43	43	43

YARN REQUIRED

Lincraft Cosy Wool 8ply
100g balls 6 7 8 8

NEEDLES

- 4mm knitting needles
- Wool needle for sewing up

REQUIREMENTS

- Cable needle
- 6 buttons

TENSION

22 sts and 32 rows to 10cm over stocking st, using 4mm needles.

SPECIAL ABBREVIATIONS

C6F = slip next 3 sts onto cable needle and leave at front of work, K3, then K3 from cable needle.

C6B = slip next 3 sts onto cable needle and leave at back of work, K3, then K3 from cable needle.

BACK

Using 4mm needles, cast on 101 (111-123-133) sts.

1st row: K2, * P1, K1, rep from * to last st, K1.

2nd row: K1, * P1, K1, rep from * to end.

Last 2 rows form rib.

Work a further 9 rows rib.

12th row: Rib 24 (28-32-36), inc in next st, rib 1, inc in next 3 sts, rib 1, inc in next st, rib 39 (41-45-47), inc in next st, rib 1, inc in next 3 sts, rib 1, inc in next st, rib to end ... 111 (121-133-143) sts.

Beg Cable Patt

1st row: K20 (24-28-32), P1, K1, P2, K12, P2, K1, P1, K31 (33-37-39), P1, K1, P2, K12, P2, K1, P1, K20 (24-28-32).

2nd row: P20 (24-28-32), K1, P1, K2, P12, K2, P1, K1, P31 (33-37-39), K1, P1, K2, P12, K2, P1, K1, P20 (24-28-32).

3rd row: K20 (24-28-32), P1, K1, P2, C6F, C6B, P2, K1, P1, K31 (33-37-39), P1, K1, P2, C6F, C6B, P2, K1, P1, K20 (24-28-32).

4th row: As 2nd row.

5th row: As 1st row.

6th row: As 2nd row.

Last 6 rows form cable patt for Back.

Work a further 14 rows cable patt.

Beg Side Shaping

Keeping cable patt correct, dec one st at each end of next row, then every 4th row until 97 (107-119-129) sts rem.

Work 5 rows cable patt.

Inc one st at each end of next row, then every 6th row until there are 111 (121-133-143) sts.

Cont in cable patt without shaping until work measures 37cm from beg, working last row on wrong side.

Shape Armholes

Keeping patt correct, cast off 6 (8-9-11) sts at beg of next 2 rows ... 99 (105-115-121) sts.

Dec one st at each end of next row, then every alt row until 87 (91-97-101) sts rem.

Work 55 rows cable patt without shaping.

Shape Shoulders

Cast off 9 (9-10-10) sts at beg of next 4 rows, then 9

(10-10-11) sts at beg of next 2 rows.

Cast off rem 33 (35-37-39) sts.

LEFT FRONT

Using 4mm needles, cast on 49 (53-59-65) sts.

Work 11 rows rib.

12th row: Rib 19 (19-21-23), [inc in next st, rib 1] 4 times, rib to end ... 53 (57-63-69) sts.

Beg Cable Patt

1st row: K20 (24-28-32), P1, K1, P2, K12, P2, K1, P1, K13 (13-15-17).

2nd row: P13 (13-15-17), K1, P1, K2, P12, K2, P1, K1, P20 (24-28-32).

3rd row: K20 (24-28-32), P1, K1, P2, C6F, C6B, P2, K1, P1, K13 (13-15-17).

4th row: As 2nd row.

5th row: As 1st row.

6th row: As 2nd row.

Last 6 rows form cable patt for Left Front.

Work a further 14 rows cable patt.

Beg Side Shaping

Keeping cable patt correct, dec one st at beg of next row, then every 4th row until 46 (50-56-62) sts rem.

Work 5 rows cable patt.

Inc one st at beg of next row, then every 6th row until there are 53 (57-63-69) sts.

Cont in cable patt without shaping until work measures same as Back to beg of armhole shaping, working last row on wrong side.

Shape Armhole and Front Slope

Keeping patt correct, cast off 6 (8-9-11) sts at beg of next row ... 47 (49-54-58) sts.

Dec one st at beg of every alt row 6 (7-9-10) times, AT SAME TIME dec one st at front edge in 2nd row, then every 4th row 7

(6-7-12) times, then every 6th row 6 (7-7-4) times ... 27 (28-30-31) sts.

Work 1 row.

Shape Shoulder

Cast off 9 (9-10-10) sts at beg of next and alt row.

Work 1 row.

Cast off rem 9 (10-10-11) sts.

RIGHT FRONT

Using 4mm needles, cast on 49 (53-59-65) sts.

Work 11 rows rib.

12th row: Rib 26 (30-34-38), [inc in next st, rib 1] 4 times, rib to end ... 53 (57-63-69) sts.

Beg Cable Patt

1st row: K13 (13-15-17), P1, K1, P2, K12, P2, K1, P1, K20 (24-28-32).

2nd row: P20 (24-28-32), K1, P1, K2, P12, K2, P1, K1, P13 (13-15-17).

3rd row: K13 (13-15-17), P1, K1, P2, C6F, C6B, P2, K1, P1, K20 (24-28-32).

4th row: As 2nd row.

5th row: As 1st row.

6th row: As 2nd row.

Last 6 rows form cable patt for Right Front.

Work a further 14 rows cable patt.

Beg Side Shaping

Keeping cable patt correct, dec one st at end of next row, then every 4th row until 46 (50-56-62) sts rem.

Work 5 rows cable patt.

Inc one st at end of next row, then every 6th row until there are 53 (57-63-69) sts.

Cont in cable patt without shaping until work measures same as Back to beg of armhole shaping, working last row on wrong side.

Work 1 row.

Shape Armhole and Front Slope

Keeping patt correct, cast off 6 (8-9-11) sts at beg of next row ... 47 (49-54-58) sts.

Dec one st at end of next row, then every alt

row 5 (6-8-9) times, AT SAME TIME dec one st at front edge in next row, then every 4th row 7 (6-7-12) times, then every 6th row 6 (7-7-4) times ... 27 (28-30-31) sts.

Work 2 rows.

Shape Shoulder

Cast off 9 (9-10-10) sts at beg of next and alt row.

Work 1 row.

Cast off rem 9 (10-10-11) sts.

SLEEVES

Using 4mm needles, cast on 51 (53-55-57) sts.

Work 12 rows rib.

Working rem in stocking st, inc one st at each end of 7th row, then every 8th (6th-4th-4th) row until there are 73 (67-65-85) sts, then every 10th (8th-6th-6th) row until there are 77 (83-93-101) sts.

Cont without shaping until work measures 43cm (or length desired) from beg, ending with a purl row.

Shape Top

Cast off 3 (4-5-6) sts at beg of next 2 rows ... 71 (75-83-89) sts.

Dec one st at each end of next row, then every alt row until 25 (33-39-47) sts rem, then every row until 15 (15-17-17) sts rem.

Cast off.

RIGHT FRONT BAND

Using 4mm needles, cast on 159 (161-165-167) sts.

Work 5 rows rib.

6th row (wrong side): Rib 3, [rib 2tog, yrn, rib 14] 6 times, rib to end ... 6 buttonholes.

Work 3 rows rib.

10th row: Cast off 89 sts in rib, rib to end ... 70 (72-76-78) sts.

Cast off 2 sts at beg of every alt row until 50 (52-56-58) sts rem.

Work 1 row.

Next row: Cast off 2 sts, rib to last 30 sts, [sl 1, work 2tog, pssso, rib 3] 5 times ... 38 (40-44-46) sts.

Work 1 row.

Cast off 2 sts at beg of next row, then every alt row until 32 (34-34-36) sts rem, then cast

off one st at beg of every alt row until 23 (25-27-29) sts rem.

Work 1 row.

Cast off in rib.

LEFT FRONT BAND

Using 4mm needles, cast on 159 (161-165-167) sts.

Work 10 rows rib.

11th row: Cast off 89 sts in rib, rib to end ... 70 (72-76-78) sts.

Cast off 2 sts at beg of every alt row until 50 (52-56-58) sts rem.

Work 1 row.

Next row: Cast off 2 sts, rib to last 30 sts, [sl 1, work 2tog, pssso, rib 3] 5 times ... 38 (40-44-46) sts.

Work 1 row.

Cast off 2 sts at beg of next row, then every alt row until 32 (34-34-36) sts rem, then cast

off one st at beg of every alt row until 23 (25-27-29) sts rem.

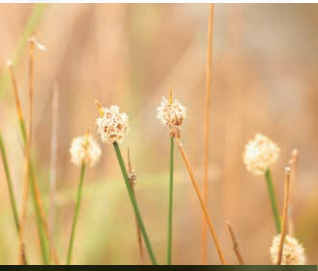
Work 1 row.

Cast off in rib.

FINISHING

Join shoulder, side and sleeve seams.

Sew in sleeves. Using a flat seam, join side edges of collar pieces tog. Sew front bands and collar in position, placing seam of collar to centre back neck. Sew on buttons. Sew in all ends.



ABBREVIATIONS/ CONVERSIONS

alt: alternate
beg: beginning
cont: continue
cm: centimetre
dec: decrease
foll: following
inc: increase
K: knit
mm: millimetre

M1: make one by picking up the loop between 2 stitches & knitting into the back of it (thereby increasing without using up a stitch).
P: purl
patt: pattern
pssso: pass slip stitch over
p2sso: pass the two slip stitches over

rem: remaining
rep: repeat
st/s: stitch/es
tbl: through back of loop
tog: together
ybk: yarn back
yfw: yarn forward
yon: yarn over needle
yrn: yarn around needle

METRIC IMPERIAL US

Table with 3 columns: Metric, Imperial, US. Rows include 2mm, 2.25mm, 2.5mm, 2.75mm, 3mm, 3.25mm, 3.5mm, 3.75mm, 4mm.

METRIC IMPERIAL US

Table with 3 columns: Metric, Imperial, US. Rows include 4.5mm, 5mm, 5.5mm, 6mm, 6.5mm, 7mm, 7.5mm, 8mm, 9mm.



23219311



Shop online at www.lincraft.com.au

- VICTORIA (03)
Ballarat 5332 6888
Epping 8401 3829
Frankston 9783 3130
Geelong 5229 1066
The Glen 9887 8611
Highpoint S/C 9317 9359
Knox 9800 3052
Malvern 9500 0110
Melbourne AOC 9650 1609
Mildura 5023 2244
Mornington 5975 4700
Nunawading 9877 4499
Northland Preston 9470 5644
Shepparton 5831 5755

- Southland W/field 9583 9770
Sunbury 8746 8899
Thomastown 9464 2651
Warrnambool 5562 7600
NEW SOUTH WALES (02)
Albury 6023 2366
Alexandria 9669 1168
Armidale 6771 2611
Ballina 6681 1320
Bankstown 9790 3311
Blacktown 9672 8366
Belrose 9450 0021
Castle Hill 9899 9736
Dee Why 9982 1142

- Erina Fair 4367 6722
Grafton 6642 1955
Griffith 6964 6588
Parramatta 4952 2950
Kotara Westfield Lismore 6621 2055
Miranda Westfield 9540 5711
Mittagong 4872 4399
Roselands 9740 4055
Penrith 4733 2800
Port Macquarie 6581 0498
Sydney York St 9279 4288
Tuggerah Westfield 4355 4644
Tweed Heads Centro 5536 3333
Warwick Farm 9734 6222

- ACT (02)
Belconnen 6253 1415
Canberra Centre 6257 4516
QUEENSLAND (07)
Brisbane 3221 0064
Gladstone 4972 9366
Gympie 5481 2012
Hyperdome Home Ctr 3209 6488
Maroochydore 5479 3799
Maryborough 4122 2633
Sunnybank Hills 3272 4166
Toombul 3256 7199
Toowoomba 4638 4677

- Townsville 4728 3061
Victoria Point 3207 0987
WESTERN AUSTRALIA (08)
Whitford City 9401 7733
SOUTH AUSTRALIA (08)
Adelaide City 8231 6611
Elizabeth 8287 6880
Mt Gambier 8725 7986
Windsor Gardens 8369 1355

FOR CUSTOMER ENQUIRIES PLEASE CALL 1300 730 140 www.lincraft.com.au Things you should know: Unforeseen manufacturing, supplier delivery problems or unexpected demand may occasionally result in stock unavailability. Prices do not include accessories. Reproduction of colours may not be accurate. Lines illustrated are representative of the range. Ranges, styles and colours may vary by store. Art/Design: kma20 03 9419 4235 © Copyright Lincraft Australia Pty Ltd 2012. © Copyright Lincraft NZ Pty Ltd 2012.