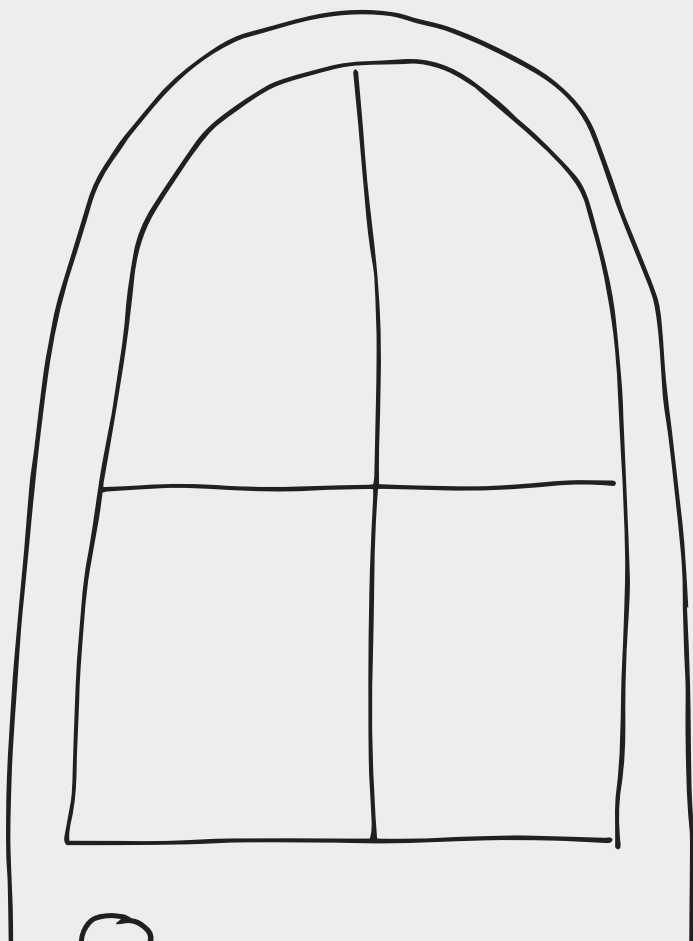


Lincraft

# Teddy Soft





### MEASUREMENTS

Size		5-8 yrs	9-12 yrs	S	M	L
Fits chest	cm	65	75	85	90	100
Garment measures	cm	72	82	92	97	107
Length (approx)	cm	49	54	58	59	60

### YARN REQUIRED

Lincraft Teddy Soft	100g balls	2	3	4	4	5
---------------------	------------	---	---	---	---	---

### NEEDLES

A 12mm circular knitting needle, 80cm long.  
Wool needle for sewing in ends.

### REQUIREMENTS

Safety pin.  
Button or shawl pin.  
Plain smooth yarn for sewing up.

### TENSION

7 sts and 10 rows to 10cm over stocking st, using 12mm needles.

### NOTE

A circular needle is used to accommodate the large number of stitches. Work backwards and forwards in rows, not rounds. Mark right side (knit) of work with a safety pin.

### BACK

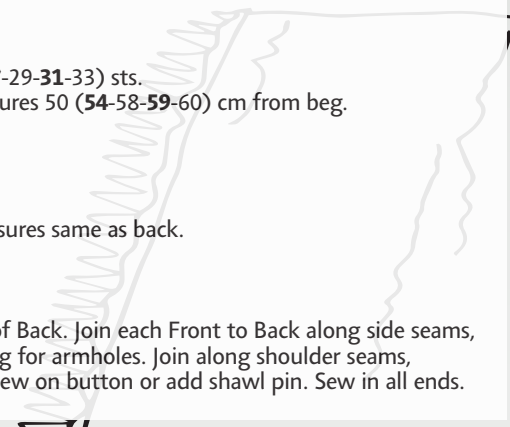
Using 12mm needles, cast on 23 (27-29-31-33) sts.  
Work in stocking st until Back measures 50 (54-58-59-60) cm from beg.  
Cast off.

### FRONT (make 2)

Cast on 12 (14-15-16-17) sts.  
Work in stocking st until Front measures same as back.  
Cast off.

### FINISHING

Lay two Fronts side by side on top of Back. Join each Front to Back along side seams, leaving 15 (19-20-20-21) cm opening for armholes. Join along shoulder seams, leaving 5cm on each side for neck. Sew on button or add shawl pin. Sew in all ends.



# Girls & Ladies Vest

EASY KNIT





## MEASUREMENTS

Size		Throw	S	DB	QB	KB
Width	cm	100	150	180	210	240
Length (approx)	cm	100	200	210	210	210

## YARN REQUIRED

Lincraft Teddy Soft	100g balls	7	19	23	27	31
---------------------	------------	---	----	----	----	----

## NEEDLES

A 12mm circular knitting needle, 100cm or 140cm long.  
Wool needle for sewing in ends.

## REQUIREMENTS

Safety pin.

## TENSION

7 sts and 10 rows to 10cm over stocking st, using 12mm needles.

## NOTE:

A circular needle is used to accommodate the large number of stitches. Work backwards and forwards in rows, not rounds. Mark right side (knit) of work with a safety pin.

## BLANKET

Using 12mm circular needle, cast on 70 (106-126-148-168) sts.

**1st row:** Knit.

**2nd row:** Purl.

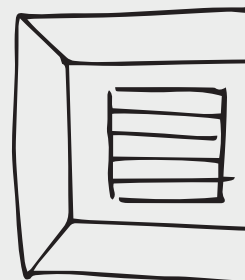
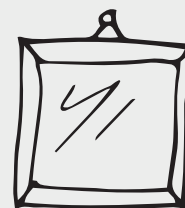
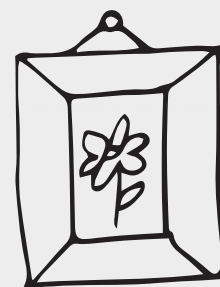
Last 2 rows form stocking st.

Continue in stocking st until work measures 100 (200-210-210-210) cm from beg, ending with a purl row.

Cast off.

## FINISHING

Sew in all ends.



# Fluffy Blanket

EASY KNIT





## MEASUREMENTS

Size		Standard	Euro
Width	cm	40	55
Length	cm	40	55

## YARN REQUIRED

Lincraft Teddy Soft	100g balls	2	4
---------------------	------------	---	---

## NEEDLES

A pair of 12mm knitting needles.  
Wool needle for sewing in ends.

## REQUIREMENTS

Safety pin.  
Plain smooth yarn for sewing up.  
Cushion insert - 40cm x 40cm or 55cm x 55cm.

## TENSION

7 sts and 10 rows to 10cm over stocking st, using 12mm needles.

## NOTE:

Mark right side (knit) of work with a safety pin.

## FLUFFY CUSHION

Using 12mm circular needle, cast on 28 (**38**) sts.

**1st row:** Knit.

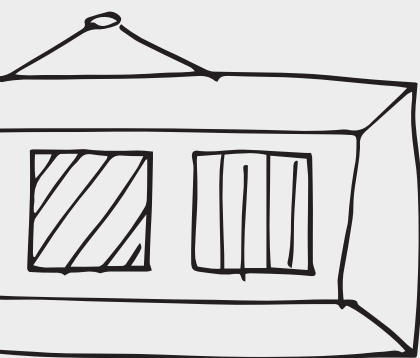
**2nd row:** Purl.

Last 2 rows form stocking st.

Continue in stocking st until work measures 80 (**110**) cm from beg, ending with a purl row.  
Cast off.

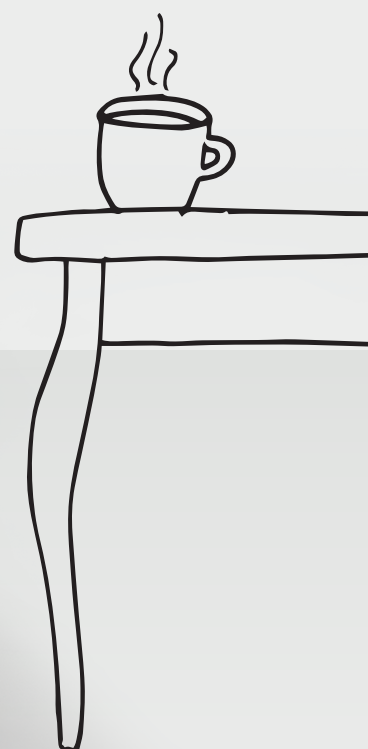
## FINISHING

Fold in half and sew side seams tog. Place cushion insert inside then sew rem seam.  
Sew in all ends.



# Fluffy Cushions

EASY KNIT

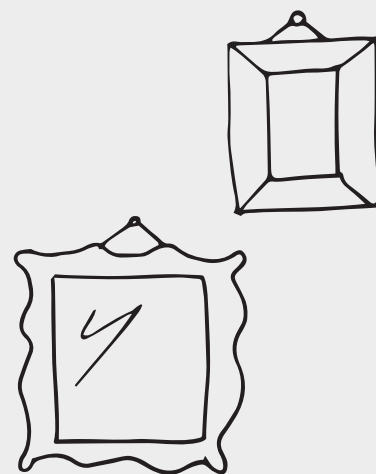






# Kids Shrug

EASY KNIT



## MEASUREMENTS

Years		5-6	7-8	9-10	11-13	14-15
Fits chest	cm	65	70	75	80	85
Garment measures (sleeve to sleeve)	cm	82	94	101	107	112
Length (approx)	cm	28	30	33	36	39

## YARN REQUIRED

Lincraft Teddy Soft	100g balls	2	2	3	3	4
---------------------	------------	---	---	---	---	---

## NEEDLES

A 12mm circular knitting needle, 80cm long.  
Wool needle for sewing in ends.

## REQUIREMENTS

Safety pin.  
Plain smooth yarn for sewing up.

## TENSION

7 sts and 10 rows to 10cm over stocking st, using 12mm needles.

## NOTE:

A circular needle is used to accommodate the large number of stitches.  
Work backwards and forwards in rows, not rounds. Mark right side (knit) of work with a safety pin.

## SHRUG

Using 12mm needles, cast on 20 (21-23-25-27) sts.  
Work in stocking st until Shrug measures 82 (94-101-107-112) cm from beg.  
Cast off.

## FINISHING

Fold Shrug in half lengthways. Join sleeve seams for 18 (23-25-27-28) cm on each end, leaving an opening in the middle. Sew in all ends.

Visit [www.lincraft.com.au](http://www.lincraft.com.au) and download your free How to Sheet #A622 to make this Girls Cape.



Visit [www.lincraft.com.au](http://www.lincraft.com.au) and download your free How to Sheet #A623 to make this Ladies Jacket.



### LINCRAFT TEDDY SOFT

**Composition:** 100% Polyester  
**Weight:** 100g  
**Meterage:** 60m  
**Needle Size:** 12.00mm  
**Tension (10cm x 10cm):** 7 stitches x 10 rows  
**Care Instructions** - Wash at or below 30°C. Do not bleach, Tumble dry at low temperature, Do not iron, Dry cleanable (P).

### KNITTING ABBREVIATIONS

**alt:** alternate  
**beg:** beginning  
**cm:** centimetre  
**cont:** continue  
**dec:** decrease  
**fol:** following  
**inc:** increase  
**incl:** including  
**K:** knit  
**mm:** millimetre

**M1:** make one by picking up the loop between 2 stitches & knitting into the back of it (thereby increasing without using up a stitch).

**P:** purl  
**patt:** pattern  
**pssso:** pass slip stitch over  
**p2sso:** pass the two slip stitches over

**rem:** remaining  
**rep:** repeat  
**st/s:** stitch/es  
**tbl:** through back of loop  
**tog:** together  
**ybk:** yarn back  
**yft:** yarn front  
**yfwd:** yarn forward  
**yon:** yarn over needle  
**yrn:** yarn around needle

### METRIC IMPERIAL US

2.00mm	14	0
2.25mm	13	1
2.50mm	12	-
2.75mm	12	2
3.00mm	11	3
3.25mm	10	3 & 4
3.50mm	9	-
3.75mm	9	5
4.00mm	8	6

### METRIC IMPERIAL US

4.50mm	7	7
5.00mm	6	8
5.50mm	5	9
6.00mm	4	10
6.50mm	3	10.5
7.00mm	2	10.5
7.50mm	1	11
8.00mm	0	11
9.00mm	00	13



30398764