

Lincraft

Where ideas come to life.

NEW KNITS FOR BABIES



OVER 40 PROJECTS TO MAKE AND GIVE.

CONTENTS



Crochet Chevron Cot Blanket

5



Xander Coat

6



Harvey the Whale

8



Elf Hat

10



Lane Beanie

11



Crocodile Blanket (pram size)

21



Leaf Jacket

22



Little Bear Coat

24



Plain & Simple Beanie 4ply

26



Plain & Simple Booties 4ply

26



Plain & Simple
Cardigan & Pants 4ply

30



Plain & Simple
Cardigan & Pants 8ply

32



Enchanted Mushroom
Rattle & Toy

34



Kailan Soaker Pants

36



Woobsy Cuddle Toy

37



Macey A-Line Dress
(optional sleeves & stripes)

44



Macey A-Line Dress
(optional sleeves & stripes)

44



Fernando Cardigan

46



Wrapped Car Seat Blanket

48



Babette Cardigan

50



Jamie Jumper
(optional stripe)

56



Jamie Cardigan
(optional stripe)

56



Flora Crochet
Pram Bunting

58



Pom Pom Mobile

59



Lenny Jacket

60



Okko Vest
12



Stacking Blocks
14



Bala Leggings
19



Whitley Pram Blanket
20



Plain & Simple Mittens 4ply
28



Plain & Simple Beanie 8ply
Free project (A079)



Plain & Simple Booties 8ply
Free project (A080)



Plain & Simple Mittens 8ply
Free project (A078)



Marlo Moccasins
38



Tavi Mouse
39



Rae Cardigan
40



Rada Kimono Top
42



Hombre Bib
52



Caley Bib & Washcloth Set
53



Easton Beanie
54



Eddie Beanie
55



String of Hearts
62



Sacha Cot Blanket
63

ABBREVIATIONS / CONVERSIONS

CROCHET

ch: chain
cm: centimetre
dc: double crochet
dec: decrease
htr: half treble
inc: increase

mm: millimetre
rep: repeat
sl st: slip stitch
sp/s: space/s
tr: treble

METRIC IMPERIAL US

2mm	14	-
2.25mm	13	B/1
2.5mm	12	-
2.75mm	-	C/2
3mm	11	-
3.25mm	10	D/3
3.5mm	9	E/4
3.75mm	-	F/5
4mm	8	G/6

METRIC IMPERIAL US

4.5mm	7	7
5mm	6	H/8
5.5mm	5	I/9
6mm	4	J/10
6.5mm	3	K/10
7mm	2	-
8mm	0	-
9mm	00	-
10mm	000	-

KNITTING

alt: alternate
beg: beginning
cont: continue
cm: centimetre
dec: decrease
fol: following
inc: increase
incl: including
K: knit
mm: millimetre

M1: make one by picking up the loop between 2 stitches & knitting into the back of it (thereby increasing without using up a stitch).
P: purl
patt: pattern
pssso: pass slip stitch over
p2sso: pass the two slip stitches over

rem: remaining
rep: repeat
st/s: stitch/es
tbl: through back of loop
tog: together
ybk: yarn back
yfwd: yarn forward
yon: yarn over needle
yrn: yarn around needle

METRIC IMPERIAL US

2mm	14	0
2.25mm	13	1
2.5mm	12	-
2.75mm	12	2
3mm	11	3
3.25mm	10	3 & 4
3.5mm	9	-
3.75mm	9	5
4mm	8	6

METRIC IMPERIAL US

4.5mm	7	7
5mm	6	8
5.5mm	5	9
6mm	4	10
6.5mm	3	10.5
7mm	2	10.5
7.5mm	1	11
8mm	0	11
9mm	00	13

FELTING

YOU WILL NEED

Sullivan's Needle Felting Kit

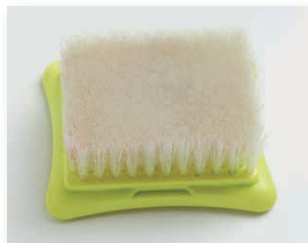
The kit consists of a Mat which looks like a brush and a Needle felting tool.

Wool Roving

Sold by the pack.

Embroidery Floss, Buttons and Beads

All optional.



Needle Felting is a fast and easy way to apply a shape to a knitted or jersey garment. It's a great way to apply elbow pads, and you can cover stains on kids t-shirts with a larger shape for a fun and fluffy look.

Just be careful when washing as felted area may shrink further.

STEP 1

Place the felting mat under the area you want to apply the appliqué to.

STEP 2

Tease some felt roving out of the bundle. Pull it out so that the threads separate and it's cloud like – you don't want lumps as they will compact further in the felting process.

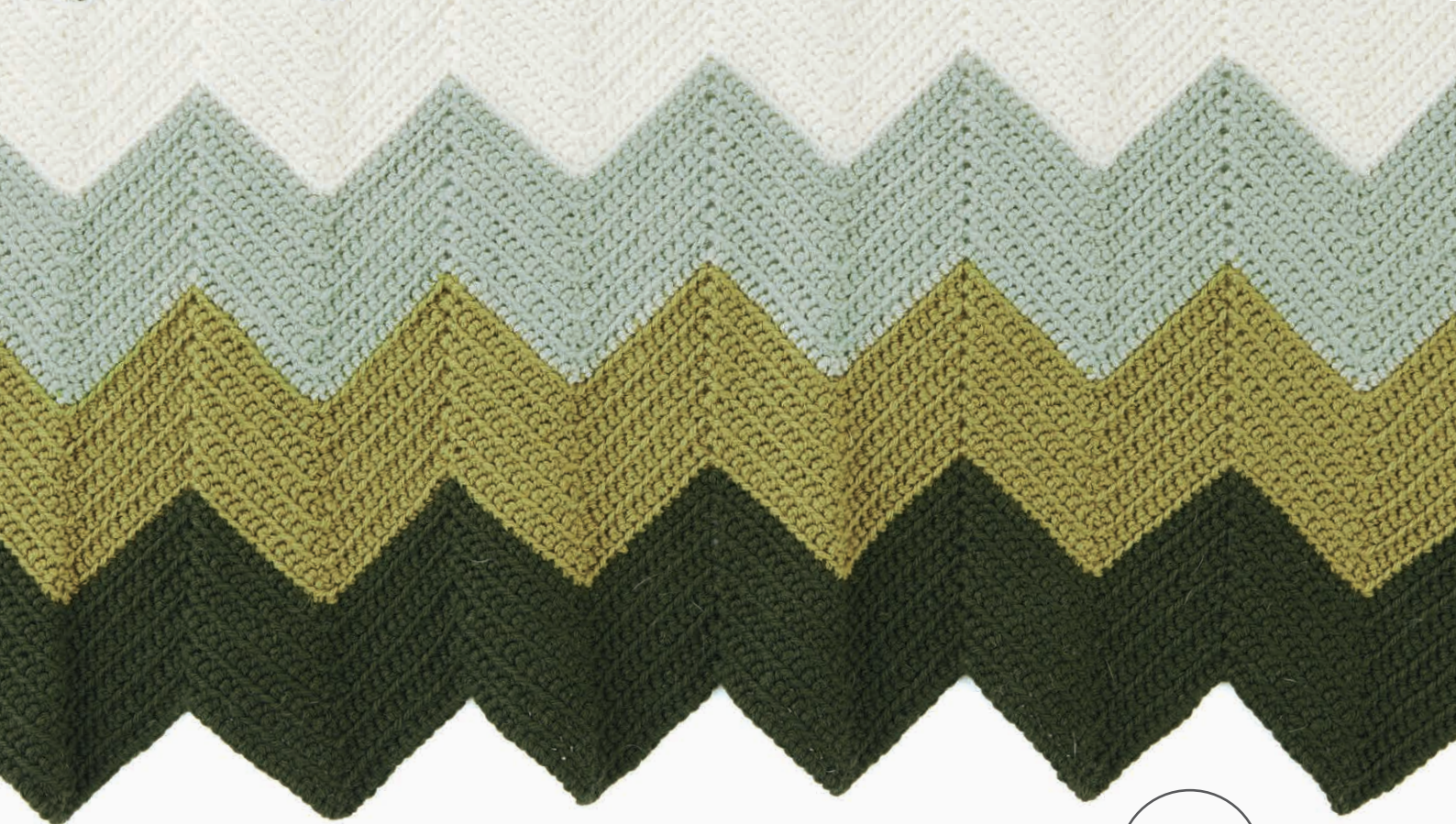
Lay the roving out into the shape you want. It's better to start with a light covering and add more to the top as you go and start felting using the tool.

Push the tool down into the brush sharply. It will penetrate the fabric and push the fibres down through to the other side.

You can add details, and use your fingernails to scrape fluffy edges in towards the centre to create a cleaner line.

You can add more colours as you go, by laying different coloured roving on the top and continuing to felt.

The felting will stay in place, and will become further embedded on washing. Embroider over the top if you like, and add beads or buttons as further embellishments.



CROCHET CHEVRON COT BLANKET



MEASUREMENTS

Width (approx)	cm	90
Length (approx)	cm	145

YARN REQUIRED

Lincraft Cosy Wool 8ply	100g balls	
OR Lincraft Superwash 8ply		
OR Lincraft DK 8ply		
1st Colour (C1)		3
2nd Colour (C2)		3
3rd Colour (C3)		3
4th Colour (C4)		2
OR Lincraft Supersoft 8ply	50g balls	
1st Colour (C1)		6
2nd Colour (C2)		6
3rd Colour (C3)		6
4th Colour (C4)		4

CROCHET HOOK

A 4.50mm crochet hook.

REQUIREMENTS

Wool needle for sewing in ends.

TENSION

2dc = 1cm, using 4.50mm hook.

COT BLANKET

Using 4.50mm hook and C1, make 196ch, turn.

1st row: 1dc in 2nd ch from hook, 1dc in each of next 12ch, [3dc in next ch, 1dc in each of next 13ch, miss 1ch, 1dc in each of next 13ch] 6 times, 3dc in next ch, 1dc in each of next 13ch, 1ch, turn.

2nd row: Working in back of loop of each dc of the previous row, 1dc in first dc, miss 1dc, 1dc in each of next 12dc, [3dc in next dc, 1dc in each of next 13dc, miss 2dc, 1dc in each of next 13dc] 6 times, 3dc in next dc, 1dc in each of next 12dc, miss 1dc, 1dc in last dc, 1ch, turn.

Using C1, work 2nd row 9 times.

Using C2, work 2nd row 11 times.

Using C3, work 2nd row 11 times.

Using C4, work 2nd row 11 times.

Using C1, work 2nd row 11 times.

Using C2, work 2nd row 11 times.

Using C3, work 2nd row 11 times.

Using C4, work 2nd row 11 times.

Using C3, work 2nd row 11 times.

Using C2, work 2nd row 11 times.

Using C1, work 2nd row 11 times.

Using C4, work 2nd row 11 times.

Using C3, work 2nd row 11 times.

Using C2, work 2nd row 11 times.

Using C1, work 2nd row 11 times.

Fasten off.

FINISHING

Sew in all ends.

EASY

MEASUREMENTS

Months		0	3	6	12	24
Fits chest	cm	35	40	45	50	55
Garment measures	cm	46	51	58	65	70
Length (approx)	cm	29	33	37	41	45
Sleeve length (approx)	cm	11	13	16	19	23

YARN REQUIRED

Lincraft Baby Grand 4ply	100g balls	1	2	2	3	3
OR Lincraft Cotton 4ply	50g balls	3	3	4	5	5
OR Lincraft Lullaby 4ply	50g balls	3	3	4	5	5

NEEDLES

A pair of 3.25mm knitting needles.
Wool needle for sewing up.

REQUIREMENTS

A stitch holder.
5 (6-7-7-7) buttons.

TENSION

28 sts and 36 rows to 10cm over patt, using 3.25mm needles.

BACK

Using 3.25mm needles, cast on 66 (74-84-92-100) sts.

Beg Patt:

1st row: K0 (4-0-1-5), P6 (6-3-6-6), * K6, P6, rep from * to last 0 (4-9-1-5) st/s, K0 (4-6-1-5), P0 (0-3-0-0).

2nd row: K0 (0-3-0-0), P0 (4-6-1-5), * K6, P6, rep from * to last 6 (10-3-7-11) sts, K6 (6-3-6-6), P0 (4-0-1-5).

Rep 1st and 2nd rows twice.

7th row: P0 (4-0-1-5), K6 (6-3-6-6), * P6, K6, rep from * to last 0 (4-9-1-5) st/s, P0 (4-6-1-5), K0 (0-3-0-0).

8th row: P0 (0-3-0-0), K0 (4-6-1-5), * P6, K6, rep from * to last 6 (10-3-7-11) sts, P6 (6-3-6-6), K0 (4-0-1-5).

Rep 7th and 8th rows twice.

Last 12 rows form patt for Back.

Cont in patt until work measures approx 18 (21-24-27-30) cm from beg, ending with a 6th or 12th patt row.

Shape Armholes:

Keeping patt correct, cast off 3 (4-5-5-6) sts at beg of next 2 rows ... 60 (66-74-82-88) sts. Dec one st at each end of next row, then every alt row until 56 (60-66-72-78) sts rem.

Cont in patt without shaping until armhole measures 11 (12-13-14-15) cm, working last row on wrong side.

Shape Shoulders:

Cast off 4 (5-5-6-7) sts at beg of next 4 rows, then 5 (4-6-7-7) sts at beg of next 2 rows. Leave rem 30 (32-34-34-36) sts on a stitch holder.

LEFT FRONT

Using 3.25mm needles, cast on 30 (34-39-43-47) sts.

Beg Patt:

1st row: K0 (4-0-1-5), P6 (6-3-6-6), [K6, P6] 2 (2-3-3-3) times.

2nd row: [K6, P6] 2 (2-3-3-3) times, K6 (6-3-6-6), P0 (4-0-1-5).

Rep 1st and 2nd rows twice.

7th row: P0 (4-0-1-5), K6 (6-3-6-6), [P6, K6] 2 (2-3-3-3) times.

8th row: [P6, K6] 2 (2-3-3-3) times, P6 (6-3-6-6), K0 (4-0-1-5).

Rep 7th and 8th rows twice.

Last 12 rows form patt for Left Front.

Cont in patt until work measures same as Back to beg of armhole shaping, ending with same patt row.

Shape Armhole:

Keeping patt correct, cast off 3 (4-5-5-6) sts at beg of next row ... 27 (30-34-38-41) sts. Dec one st at armhole edge in every alt row until 25 (27-30-33-36) sts rem.

Cont in patt without shaping until there are 21 (21-21-21-25) rows less than Back to beg of shoulder shaping, working last row on right side.

Shape Neck:

Cast off 7 (8-8-8-9) sts at beg of next row ... 18 (19-22-25-27) sts.

Dec one st at neck edge in next row, then every 4th (4th-alt-alt-4th) row until 14 (15-20-23-22) sts rem, then every 6th (6th-4th-4th-6th) row until 13 (14-16-19-21) sts rem.

Work 1 row.

Shape Shoulder:

Cast off 4 (5-5-6-7) sts at beg of next and alt row. Work 1 row.

Cast off rem 5 (4-6-7-7) sts.

RIGHT FRONT

Using 3.25mm needles, cast on 30 (34-39-43-47) sts.

Beg Patt:

1st row: P6, [K6, P6] 2 (2-2-3-3) times, K0 (4-6-1-5), P0 (0-3-0-0).

2nd row: K0 (0-3-0-0), P0 (4-6-1-5), [K6, P6] 2 (2-2-3-3) times, K6.

Rep 1st and 2nd rows twice.

7th row: K6, [P6, K6] 2 (2-2-3-3) times, P0 (4-6-1-5), K0 (0-3-0-0).

8th row: P0 (0-3-0-0), K0 (4-6-1-5), [P6, K6] 2 (2-2-3-3) times, P6.

Rep 7th and 8th rows twice.

Last 12 rows form patt for Right Front.

Cont in patt until work measures same as Back to beg of armhole shaping, ending with same patt row.

Work 1 row.

Shape Armhole:

Keeping patt correct, cast off 3 (4-5-5-6) sts at beg of next row ... 27 (30-34-38-41) sts. Dec one st at armhole edge in next row, then every alt row until 25 (27-30-33-36) sts rem. Cont in patt without shaping until there are 22 (22-22-22-26) rows less than Back to beg of shoulder shaping, working last row on wrong side.

Shape Neck:

Cast off 7 (8-8-8-9) sts at beg of next row ... 18 (19-22-25-27) sts.

Work 1 row.

Dec one st at neck edge in next row, then every 4th (4th-alt-alt-4th) row until 14 (15-20-23-22) sts rem, then every 6th (6th-4th-4th-6th) row until 13 (14-16-19-21) sts rem.

Work 2 rows.

Shape Shoulder:

Cast off 4 (5-5-6-7) sts at beg of next and alt row. Work 1 row.

Cast off rem 5 (4-6-7-7) sts.

SLEEVES

Using 3.25mm needles, cast on 42 (44-46-50-52) sts.

Beg Patt:

1st row: P0 (1-2-4-5), K6, * P6, K6, rep from * to last 0 (1-2-4-5) st/s, P0 (1-2-4-5).

2nd row: K0 (1-2-4-5), P6, * K6, P6, rep from * to last 0 (1-2-4-5) st/s, K0 (1-2-4-5).

Rep 1st and 2nd rows twice.

7th row: K0 (1-2-4-5), P6, * K6, P6, rep from * to last 0 (1-2-4-5) st/s, K0 (1-2-4-5).

8th row: P0 (1-2-4-5), K6, * P6, K6, rep from * to last 0 (1-2-4-5) st/s, P0 (1-2-4-5).

Rep 7th and 8th rows once.

11th row: Inc in first st, K0 (0-1-3-4), P5 (6-6-6-6), * K6, P6, rep from * to last 12 (13-14-16-17) sts, K6, P5 (6-6-6-6), K0 (0-1-3-4), inc in last st ... 44 (46-48-52-54) sts.

12th row: P1 (2-3-5-6), K6, * P6, K6, rep from * to last 1 (2-3-5-6) st/s, P1 (2-3-5-6).

Keeping patt correct as placed and working extra sts into patt, inc one st at each end of next (3rd-3rd-5th-3rd) row, then every 4th (4th-6th-6th-6th) row until there are 54 (58-60-66-74) sts.

Cont in patt without shaping until work measures approx 11 (13-16-19-23) cm (or length desired) from beg, ending with a 6th or 12th patt row.

Shape Top:

Keeping patt correct, cast off 2 (2-3-3-3) sts at beg of next 2 rows ... 50 (54-54-60-68) sts.

Dec one st at each end of next row, then every alt row until 34 (34-34-38-50) sts rem, then every row until 8 sts rem.

Cast off.

XANDER COAT

NECKBAND

Join shoulder seams.

With right side facing and using 3.25mm needles, knit up 21 (22-22-22-26) sts along Right Front neck shaping, knit across Back stitch holder and dec one st in centre, then knit up 21 (22-22-22-26) sts along Left Front neck shaping ... 71 (75-77-77-87) sts.

Knit 11 (11-13-17-17) rows garter st.

Cast off.

RIGHT FRONT BAND FOR GIRL OR LEFT FRONT BAND FOR BOY

With right side facing and using 3.25mm needles, knit up 67 (77-91-103-109) sts along Right Front edge for Girl or Left Front edge for Boy, incl side edge of Neckband.

Knit 5 (5-5-7-7) rows garter st.

Next row: K2, K2tog, yfwd, * K13 (12-12-14-15), K2tog, yfwd, rep from * to last 3 sts, K3 ... 5 (6-7-7-7) buttonholes.

Knit 5 (5-7-9-9) rows garter st.

Cast off.

LEFT FRONT BAND FOR GIRL OR RIGHT FRONT BAND FOR BOY

Work to correspond with other Front Band, omitting buttonholes.

FINISHING

Sew in Sleeves. Join side and Sleeve seams.

Sew on buttons. Sew in all ends.



UNISEX

4PLY

INTERMEDIATE

HARVEY THE WHALE

MEASUREMENTS

Length (approx) cm 80

YARN REQUIRED

Lincraft DK, Cosy Wool 100g balls 2
or Superwash 8ply

NEEDLES

A pair of 3.75mm knitting needles.
Wool needle for sewing up.

REQUIREMENTS

A pair of safety eyes, wobbly eyes or scraps of black yarn to embroider eyes.
Scraps of red yarn to embroider mouth.
Washable filling.

TENSION

23.5 sts and 32 rows to 10cm over stocking st, using 3.75mm needles.

NOTE

This Whale has been knitted on smaller needles and at a tighter tension than usually recommended.

BODY AND HEAD (beg at tail)

Using 3.75mm needles, cast on 72 sts.

Working in stocking st throughout, work 4 rows.

5th row: K2tog, K32, [K2tog] twice, K32, K2tog ... 68 sts.

Work 3 rows.

9th row: K2tog, K30, [K2tog] twice, K30, K2tog ... 64 sts.

Work 3 rows.

13th row: K2tog, K28, [K2tog] twice, K28, K2tog ... 60 sts.

Work 3 rows.

17th row: K2tog, K26, [K2tog] twice, K26, K2tog ... 56 sts.

Work 3 rows.

21st row: K2tog, K24, [K2tog] twice, K24, K2tog ... 52 sts.

Work 3 rows.

25th row: K2tog, K22, [K2tog] twice, K22, K2tog ... 48 sts.

26th and alt rows: Purl.

27th row: K2tog, K20, [K2tog] twice, K20, K2tog ... 44 sts.

29th row: K2tog, K18, [K2tog] twice, K18, K2tog ... 40 sts.

31st row: K2tog, K16, [K2tog] twice, K16, K2tog ... 36 sts.

33rd row: K2tog, K14, [K2tog] twice, K14, K2tog ... 32 sts.

35th row: K2tog, K12, [K2tog] twice, K12, K2tog ... 28 sts.

37th row: K2tog, K10, [K2tog] twice, K10, K2tog ... 24 sts.

39th row: K2tog, K8, [K2tog] twice, K8, K2tog ... 20 sts.

Work 21 rows.

61st row: Inc in first st, K8, [inc once in next st] twice, K8, inc in last st ... 24 sts.

Work 3 rows.

65th row: Inc in first st, K10, [inc once in next st] twice, K10, inc in last st ... 28 sts.

Work 3 rows.

69th row: Inc in first st, K12, [inc once in next st] twice,

K12, inc in last st ... 32 sts.

Work 3 rows.

73rd row: Inc in first st, K14, [inc once in next st] twice, K14, inc in last st ... 36 sts.

Work 3 rows.

77th row: Inc in first st, K16, [inc once in next st] twice, K16, inc in last st ... 40 sts.

Work 3 rows.

81st row: Inc in first st, K18, [inc once in next st] twice, K18, inc in last st ... 44 sts.

Cont inc in this manner in every 4th row until there are 72 sts.
Work 3 rows.

113th row: K35, [inc once in next st] twice, K35 ... 74 sts.

Work 3 rows.

117th row: K36, [inc once in next st] twice, K36 ... 76 sts.

Work 3 rows.

121st row: K37, [inc once in next st] twice, K37 ... 78 sts.

Work 3 rows.

125th row: K38, [inc once in next st] twice, K38 ... 80 sts.

Work 3 rows.

129th row: K39, [inc once in next st] twice, K39 ... 82 sts.

Cont inc in this manner in every 4th row until there are 100 sts.
Work 49 rows.

215th row: K49, [inc once in next st] twice, K49 ... 102 sts.

Work 3 rows.

219th row: K50, [inc once in next st] twice, K50 ... 104 sts.

Work 3 rows.

223rd row: K2tog, K48, [K2tog] twice, K48, K2tog ... 100 sts.

224th and alt rows: Purl.

225th row: K2tog, K46, [K2tog] twice, K46, K2tog ... 96 sts.

227th row: K2tog, K44, [K2tog] twice, K44, K2tog ... 92 sts.

229th row: K2tog, K42, [K2tog] twice, K42, K2tog ... 88 sts.

231st row: K2tog, K40, [K2tog] twice, K40, K2tog ... 84 sts.

233rd row: K2tog, K38, [K2tog] twice, K38, K2tog ... 80 sts.

235th row: K2tog, K36, [K2tog] twice, K36, K2tog ... 76 sts.

237th row: K2tog, K34, [K2tog] twice, K34, K2tog ... 72 sts.

239th row: K2tog, K32, [K2tog] twice, K32, K2tog ... 68 sts.

240th row: Purl.

Cast off.

FLIPPERS (make 2)

Using 3.75mm needles, cast on 26 sts.

Working in stocking st throughout, work 4 rows.

5th row: K2tog, K9, [K2tog] twice, K9, K2tog ... 22 sts.

Work 3 rows.

9th row: K2tog, K7, [K2tog] twice, K7, K2tog ... 18 sts.

Work 3 rows.

13th row: K2tog, K5, [K2tog] twice, K5, K2tog ... 14 sts.

Work 3 rows.

17th row: K2tog, K3, [K2tog] twice, K3, K2tog ... 10 sts.

Work 3 rows.

Dec one st at each end of next row, then every alt row until 4 sts rem.

Break off yarn, run end through rem sts, draw up tightly and fasten off securely.

FINISHING

Body and Head: Attach safety eyes, or wobbly eyes, or if preferred embroider eyes using black yarn. Using red yarn, embroider mouth. Fold Body and Head in half and using mattress st, sew seams, stuffing firmly as you go.

Flippers: Fold in half and using mattress st, sew side seam, stuffing firmly as you go. Sew cast on edge to side of Body. Sew in all ends.

Lincraft publishes story books and accompanying patterns so you can knit the characters. Our adorable whale is from **A Home in the Sea**.



We recommend safety eyes - which are virtually impossible to remove once in place.



EASY

8PLY

ELF HAT

MEASUREMENTS

Months		0	3	6	12	24
To fit head	cm	35	40	45	48	51

YARN REQUIRED

Lincraft Cosy Wool 8ply	100g balls	1	1	1	1	1
OR Lincraft Superwash 8ply	100g balls	1	1	1	1	1
OR Lincraft DK 8ply	100g balls	1	1	1	1	1
OR Lincraft Supersoft 8ply	50g balls	2	2	2	2	2

NEEDLES

A pair of 4.00mm knitting needles.
Wool needle for sewing up.

TENSION

22 sts and 30 rows to 10cm over stocking st, using 4.00mm needles.

ELF HAT

Using 4.00mm needles, cast on 63 (**73-81-87-91**) sts.

1st row: K2, * P1, K1, rep from * to last st, K1.

2nd row: K1, * P1, K1, rep from * to end.

Last 2 rows form rib.

Work a further 4 (**4-6-8-8**) rows rib.

Work in stocking st until Hat measures 8 (**9-9-10-11**) cm from beg, ending with a purl row and dec 0 (**1-0-6-1**) st/s evenly across last row ... 63 (**72-81-81-90**) sts.

Shape Crown:

1st row: * K2tog, K7, rep from * to end ... 56 (**64-72-72-80**) sts.

2nd, 4th and 6th rows: Purl.

3rd row: * K2tog, K6, rep from * to end.

5th row: * K2tog, K5, rep from * to end.

7th row: * K2tog, K4, rep from * to end.

Work 3 rows.

11th row: * K2tog, K3, rep from * to end.

Work 3 rows.

15th row: * K2tog, K2, rep from * to end.

Work 5 rows.

21st row: * K2tog, K1, rep from * to end.

Work 5 rows.

27th row: * K2tog, rep from * to end.

Work 13 (**15-21-31-33**) rows.

Next row: K1 (**0-1-1-0**), * K2tog, rep from * to end ... 4 (**4-5-5-5**) sts.

Work 3 rows.

Break off yarn, run end through rem sts, draw up tightly and fasten off securely.

FINISHING

Join back seam. If desired, make a pom pom or tassel and attach to tip of Hat. Sew in all ends.



The stalk of this hat may be tied in a knot for a different look.

EASY

LANE BEANIE

MEASUREMENTS

Months		0	3	6	12	24
To fit head	cm	35	40	45	48	51

YARN REQUIRED

Lincraft Splendour 50g balls

1st Colour (C1)	1	1	1	1	1
2nd Colour (C2)	1	1	1	1	1

NEEDLES

A pair of 4.50mm knitting needles.
Wool needle for sewing up.

TENSION

20 sts and 26 rows to 10cm over stocking st, using 4.50mm needles.

UNISEX



BEANIE

Using 4.50mm needles and C1, cast on 55 (**63-71-75-81**) sts.

Beg Stripe Patt:

Using C1, knit 2 rows garter st.
Using C2, knit 2 rows garter st.
Last 4 rows form stripe patt.

Work a further 16 (**18-20-22-24**) rows stripe patt and inc 3 sts evenly across last row ... 58 (**66-74-78-84**) sts.

Keeping stripes correct BUT working in stocking st for rem, cont until Beanie measures 12 (**14-15-16-18**) cm from beg, ending with a knit row.

Next row: Purl and dec 1 (**1-1-5-3**) st/s evenly across ... 57 (**65-73-73-81**) sts.

Shape Crown:

1st row: K1, * K2tog, K6, rep from * to end ... 50 (**57-64-64-71**) sts.

2nd and alt rows: Purl.

3rd row: K1, * K2tog, K5, rep from * to end.

5th row: K1, * K2tog, K4, rep from * to end.

7th row: K1, * K2tog, K3, rep from * to end.

9th row: K1, * K2tog, K2, rep from * to end.

11th row: K1, * K2tog, K1, rep from * to end.

13th row: K1, * K2tog, rep from * to end ... 8 (**9-10-10-11**) sts.

14th row: P0 (**1-0-0-1**), * P2tog, rep from * to end ... 4 (**5-5-5-6**) sts.

Break off yarn, run end through rem sts, draw up tightly and fasten off securely.

FINISHING

Join back seam, reversing seam for garter st brim. Sew in all ends. Turn up brim.

EASY

OKKO VEST

MEASUREMENTS

Months		0	3	6	12	24
Fits chest	cm	35	40	45	50	55
Garment measures	cm	40	44	53	58	62
Length	cm	22	26	29	33	40

YARN REQUIRED

Lincraft Baby Grand 4ply	100g balls	1	1	1	2	2
OR Lincraft Cotton 4ply	50g balls	2	2	2	3	4
OR Lincraft Lullaby 4ply	50g balls	2	2	2	3	4

NEEDLES

A pair of 3.25mm knitting needles.
Wool needle for sewing up.

REQUIREMENTS

A cable needle.
2 stitch holders.
2 buttons.

TENSION

32 sts and 38 rows to 10cm over cable patt, using 3.25mm needles.

SPECIAL ABBREVIATION

C4B = Slip next 2 sts onto cable needle and leave at back of work, K2, then K2 from cable needle.

BACK

Using 3.25mm needles, cast on 57 (63-75-81-87) sts.

1st row: P3, * K3, P3, rep from * to end.

2nd row: K3, * P3, K3, rep from * to end.

Last 2 rows form 3x3 rib.

Work a further 6 (6-8-8-8) rows 3x3 rib.

Next row: K3, * P1, inc purlways in next st, P1, K3, rep from * to end ... 66 (73-87-94-101) sts.

Beg Cable Patt:

1st row: P3, * K4, P3, rep from * to end.

2nd and 4th rows: K3, * P4, K3, rep from * to end.

3rd row: P3, * C4B, P3, rep from * to end.

5th row: As 1st row.

6th row: As 2nd row.

Last 6 rows form cable patt.

Cont in cable patt until work measures 12 (15-17-20-26) cm from beg, working last row on wrong side.

Shape Armholes:

Keeping cable patt correct, cast off 3 (3-5-5-5) sts at beg of next 2 rows ... 60 (67-77-84-91) sts.

Dec one st at each end of next row, then every alt row until 56 (63-69-76-81) sts rem. **

Cont in cable patt without shaping until work measures 22 (26-29-33-40) cm from beg, working last row on wrong side.

Shape Shoulders:

Cast off 5 (5-6-7-8) sts at beg of next 4 rows, then 4 (6-6-7-7) sts at beg of next 2 rows. Leave rem 28 (31-33-34-35) sts on a stitch holder.

FRONT

Work as for Back to **.

Cont in cable patt without shaping until there are 20 (20-20-22-26) rows less than Back to beg of shoulder shaping, working last row on wrong side.

Shape Neck:

Next row: Patt 21 (24-26-30-32), turn.

Cont on these 21 (24-26-30-32) sts.

Dec one st at neck edge in every row until 19 (20-20-24-30) sts rem, then every alt row until 15 (17-19-22-24) sts rem.

Work 1 row.

Note: This side of neck is 8 (8-10-10-10) rows less to accommodate shoulder opening.

Shape Shoulder:

Cast off 5 (5-6-7-8) sts, knit to last 2 sts, K2tog.

Work 1 row.

Cast off 5 (5-6-7-8) sts, knit to end.

Work 1 row.

Cast off rem 4 (6-6-7-7) sts.

Slip next 14 (15-17-16-17) sts onto a stitch holder.

With right side facing, join yarn to rem sts and patt to end.

Dec one st at neck edge in every row until 19 (20-20-24-30) sts rem, then every alt row until 14 (16-18-21-23) sts rem.

Work 8 (8-10-10-10) rows.

Shape Shoulder:

Cast off 5 (5-6-7-8) sts at beg of next and alt row.

Work 1 row.

Cast off rem 4 (6-6-7-7) sts.

NECKBAND

Join right shoulder seam. With right side facing and using 3.25mm needles, knit up 12 (10-8-8-13) sts along left side of neck, knitting or purling sts as they appear work across sts from Front stitch holder as follows: rib 6 (3-4-7-4), K2tog, rib 4 (5-5-4-5), K2tog, rib 0 (3-4-1-4), knit up 18 (16-14-15-19) sts along right side of neck, then knitting or purling sts as they appear work across sts from Back stitch holder as follows: rib 6 (4-5-2-6), K2tog, [rib 5, K2tog] 2 (2-2-3-2) times, rib 4 (5-5-5-5), K2tog,

rib 0 (4-5-2-6) ... 66 (66-66-66-78) sts.

1st row: P1 (0-1-0-2), K3 (3-3-1-3), * P3, K3, rep from * to last 2 (3-2-5-1) st/s, P2 (3-2-3-1), K0 (0-0-2-0).

2nd row: K2 (3-2-0-1), P3 (3-3-2-3), * K3, P3, rep from * to last 1 (0-1-4-2) st/s, K1 (0-1-3-2), P0 (0-0-1-0).

Rep 1st and 2nd rows 2 (2-3-3-3) times, then 1st row once.

Cast off in rib.

LEFT FRONT SHOULDER BAND

With right side facing and using 3.25mm needles, knit up 21 (21-21-27-27) sts along left front shoulder and side edge of Neckband.

Work 3 (3-3-5-5) rows 3x3 rib, beg with a 2nd row.

Next row: Rib 5 (5-5-7-7), rib 2tog, yrn, rib 6 (6-6-8-8), rib 2tog, yrn, rib 6 (6-6-8-8) ... 2 buttonholes.

Work 3 rows 3x3 rib.

Cast off in rib.

LEFT BACK SHOULDER BAND

With right side facing and using 3.25mm needles, knit up 21 (21-21-27-27) sts along side edge of Neckband and left back shoulder. Work 7 (7-9-9-9) rows 3x3 rib, beg with a 2nd row.

Cast off in rib.

ARMHOLE BANDS

Place Left Front Shoulder Band over Left Back Shoulder Band and oversew tog at shoulder at outer edge.

With right side facing and using 3.25mm needles, knit up 63 (69-81-87-93) sts evenly around armhole edge.

Work 7 (7-9-9-9) rows 3x3 rib, beg with a 2nd row.

Cast off in rib.

FINISHING

Join side and Armhole Band seams. Sew on buttons. Sew in all ends.



UNISEX
4PLY

— INTERMEDIATE —

MEASUREMENTS

Block One (approx)	cm	6 x 6 x 6
Block Two (approx)	cm	8.5 x 8.5 x 8.5
Block Three (approx)	cm	11 x 11 x 11
Block Four (approx)	cm	13.5 x 13.5 x 13.5

YARN REQUIRED

Lincraft Cosy Wool 8ply, 100g balls
Superwash 8ply or
DK 8ply

1st Colour (C1 - purple)	1
2nd Colour (C2 - yellow)	1
3rd Colour (C3 - cream)	1
4th Colour (C4 - green)	1
5th Colour (C5 - pink)	1
6th Colour (C6 - olive)	1

OR Lincraft 50g balls
Supersoft 8ply

1st Colour (C1 - purple)	1
2nd Colour (C2 - yellow)	1
3rd Colour (C3 - cream)	1
4th Colour (C4 - green)	1
5th Colour (C5 - pink)	1
6th Colour (C6 - olive)	1

NEEDLES

A pair of 4.00mm knitting needles.

Wool needle for sewing up.

REQUIREMENTS

Four blocks of foam, cut to size.

TENSION

22 sts and 30 rows to 10cm over stocking st, using 4.00mm needles.

BLOCK ONE

Centre Strip:

Using 4.00mm needles and C1, cast on 15 sts.

** Knit 4 rows garter st and inc one st in centre of last row ... 16 sts.

Work rows 1 to 12 from Graph A.

Using C1, knit 4 rows garter st and dec one st in centre of first row ... 15 sts. **

Rep from ** to ** using C3 in place of C1 and working from Graph 1.

Rep from ** to ** using C2 in place of C1 and working from Graph B.

Rep from ** to ** using C4 in place of C1 and working from Graph 2.

Cast off.

Stripe Side 1:

With right side facing, using 4.00mm needles and C5, knit up 15 sts along one side edge of the letter B block.

Knit 3 rows garter st and inc one st in centre of last row ... 16 sts.

Beg Stripe Patt:

1st row: Using C6, knit.

2nd row: K3, P10, K3.

3rd row: Using C5, knit.

4th row: K3, P10, K3.

Rep last 4 rows twice.

Using C6, knit 4 rows garter st and dec one st in centre of first row ... 15 sts.

Cast off.

Stripe Side 2:

With right side facing, using 4.00mm needles and C6, knit up 15 sts along other side edge of the letter B block.

Work as for Stripe Side 1 but reversing C5 and C6.

BLOCK TWO

Centre Strip:

Using 4.00mm needles and C2, cast on 20 sts.

*** Knit 4 rows garter st and inc one st in centre of last row ... 21 sts.

Work rows 1 to 20 from Graph C.

Using C2, knit 4 rows garter st and dec one st in centre of first row ... 20 sts. ***

Rep from *** to *** using C1 in place of C2 and working from Graph 3.

Rep from *** to *** using C4 in place of C2 and working from Graph D.

Rep from *** to *** using C5 in place of C2 and working from Graph 4.

Cast off.

Stripe Side 1:

With right side facing, using 4.00mm needles and C3, knit up 20 sts along one side edge of the letter D block.

Knit 3 rows garter st and inc one st in centre of last row ... 21 sts.

Beg Stripe Patt:

1st row: Using C6, knit.

2nd row: K3, P15, K3.

3rd row: Using C3, knit.

4th row: K3, P15, K3.

Rep last 4 rows 4 times.

Using C6, knit 4 rows garter st and dec one st in centre of first row ... 20 sts.

Cast off.

Stripe Side 2:

With right side facing, using 4.00mm needles and C6, knit up 20 sts along other side edge of the letter D block.

Work as for Stripe Side 1 but reversing C3 and C6.

BLOCK THREE

Centre Strip:

Using 4.00mm needles and C3, cast on 25 sts.

**** Knit 4 rows garter st and inc one st in centre of last row ... 26 sts.

Work rows 1 to 28 from Graph E.

Using C3, knit 4 rows garter st and dec one st in centre of first row ... 25 sts. ****

Rep from **** to **** using C2 in place of C3 and working from Graph 5.

Rep from **** to **** using C5 in place of C3 and working from Graph F.

Rep from **** to **** using C6 in place of C3 and working from Graph 6.

Cast off.

Stripe Side 1:

With right side facing, using 4.00mm needles and C1, knit up 25 sts along one side edge of the letter F block.

Knit 3 rows garter st and inc one st in centre of last row ... 26 sts.

Beg Stripe Patt:

1st row: Using C4, knit.

2nd row: K3, P20, K3.

3rd row: Using C1, knit.

4th row: K3, P20, K3.

Rep last 4 rows 6 times.

Using C4, knit 4 rows garter st and dec one st in centre of first row ... 25 sts.

Cast off.

Stripe Side 2:

With right side facing, using 4.00mm needles and C4, knit up 25 sts along other side edge of the letter F block.

Work as for Stripe Side 1 but reversing C1 and C4.

STACKING BLOCKS

8PLY

BLOCK FOUR

Centre Strip:

Using 4.00mm needles and C6, cast on 31 sts.

***** Knit 4 rows garter st and inc one st in centre of last row ... 32 sts.

Work rows 1 to 32 from Graph G.

Using C6, knit 4 rows garter st and dec one st in centre of first row

... 31 sts. *****

Rep from ***** to ***** using C5 in place of C6 and working from Graph 7.

Rep from ***** to ***** using C4 in place of C6 and working from Graph H.

Rep from ***** to ***** using C2 in place of C6 and working from Graph 8.

Cast off.

Stripe Side 1:

With right side facing, using 4.00mm needles and C3, knit up 31 sts along one side edge of the letter H block.

Knit 3 rows garter st and inc one st in centre of last row ... 32 sts.

Beg Stripe Patt:

1st row: Using C1, knit.

2nd row: K3, P26, K3.

3rd row: Using C3, knit.

4th row: K3, P26, K3.

Rep last 4 rows 7 times.

Using C1, knit 4 rows garter st and dec one st in centre of first row ... 31 sts.

Cast off.

Stripe Side 2:

With right side facing, using 4.00mm needles and C1, knit up 31 sts along other side edge of the letter H block.

Work as for Stripe Side 1 but reversing C3 and C1.

NOTE FOR ALL GRAPHS:

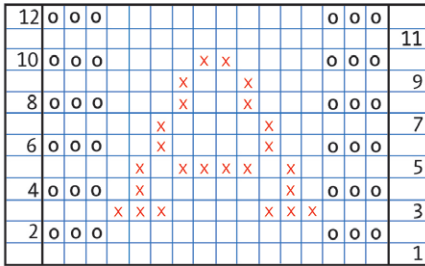
Work right side rows (odd numbered rows) from right to left and wrong side rows (even numbered rows) from left to right.



EASY

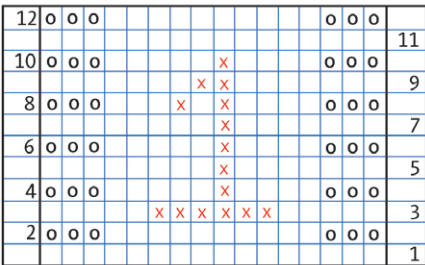
GRAPH A KEY

□ = Using C1, knit on right side rows and purl on wrong side rows.
 ○ = Using C1, knit on wrong side rows.
 X = Using C2, knit on right side rows and purl on wrong side rows.



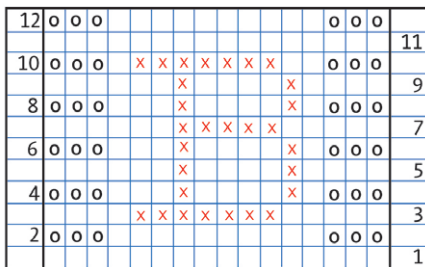
GRAPH 1 KEY

□ = Using C3, knit on right side rows and purl on wrong side rows.
 ○ = Using C3, knit on wrong side rows.
 X = Using C4, knit on right side rows and purl on wrong side rows.



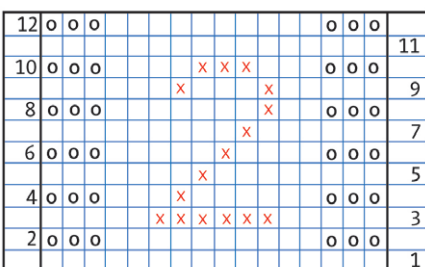
GRAPH B KEY

□ = Using C2, knit on right side rows and purl on wrong side rows.
 ○ = Using C2, knit on wrong side rows.
 X = Using C1, knit on right side rows and purl on wrong side rows.



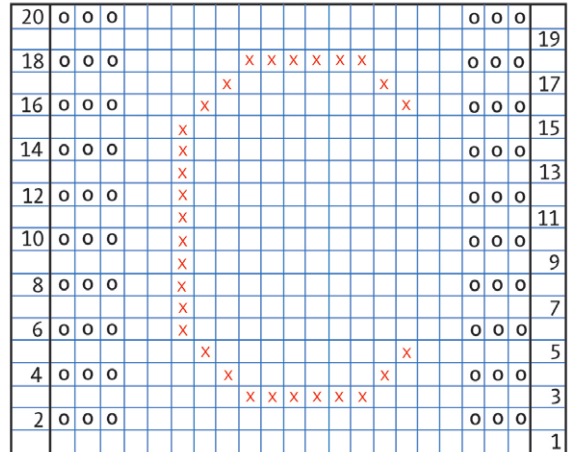
GRAPH 2 KEY

□ = Using C4, knit on right side rows and purl on wrong side rows.
 ○ = Using C4, knit on wrong side rows.
 X = Using C3, knit on right side rows and purl on wrong side rows.



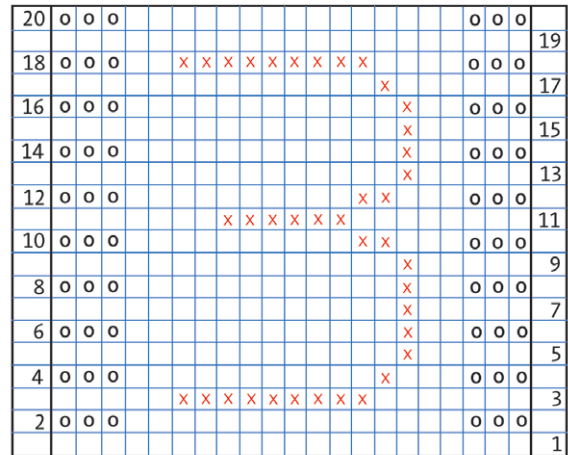
GRAPH C KEY

□ = Using C2, knit on right side rows and purl on wrong side rows.
 ○ = Using C2, knit on wrong side rows.
 X = Using C4, knit on right side rows and purl on wrong side rows.



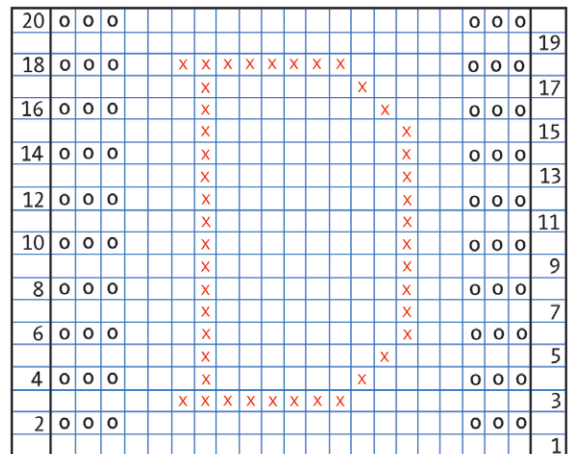
GRAPH 3 KEY

□ = Using C1, knit on right side rows and purl on wrong side rows.
 ○ = Using C1, knit on wrong side rows.
 X = Using C5, knit on right side rows and purl on wrong side rows.



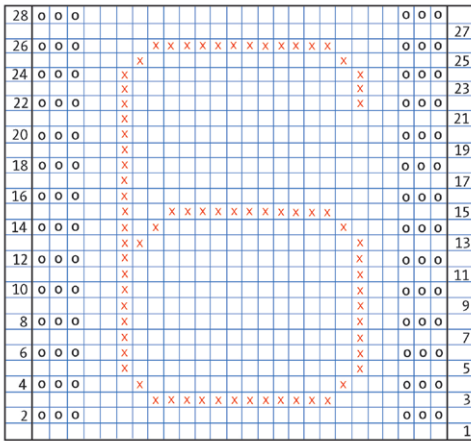
GRAPH D KEY

□ = Using C4, knit on right side rows and purl on wrong side rows.
 ○ = Using C4, knit on wrong side rows.
 X = Using C2, knit on right side rows and purl on wrong side rows.



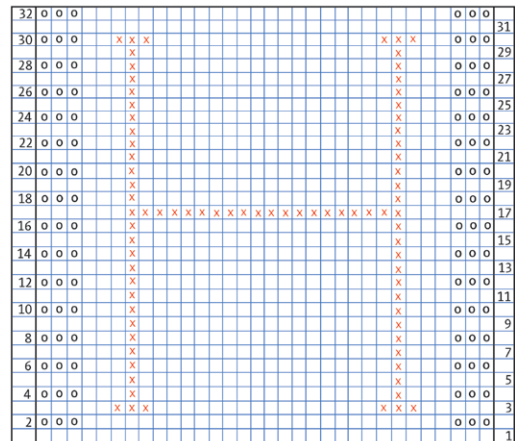
GRAPH 6 KEY

- = Using C6, knit on right side rows and purl on wrong side rows.
- O = Using C6, knit on wrong side rows.
- X = Using C2, knit on right side rows and purl on wrong side rows.



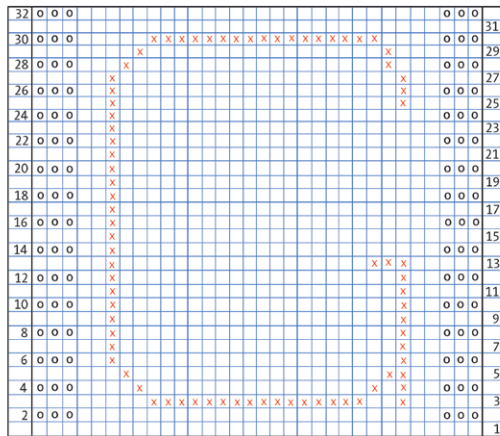
GRAPH H KEY

- = Using C4, knit on right side rows and purl on wrong side rows.
- O = Using C4, knit on wrong side rows.
- X = Using C6, knit on right side rows and purl on wrong side rows.



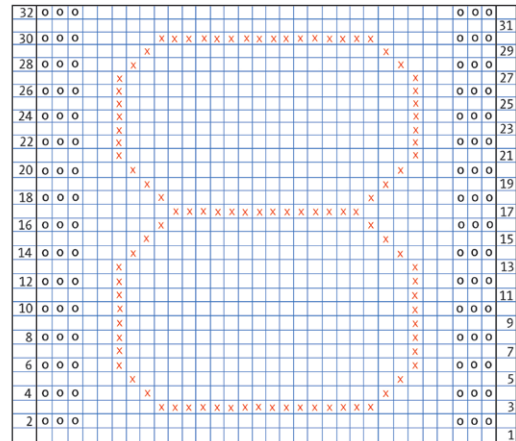
GRAPH G KEY

- = Using C6, knit on right side rows and purl on wrong side rows.
- O = Using C6, knit on wrong side rows.
- X = Using C4, knit on right side rows and purl on wrong side rows.



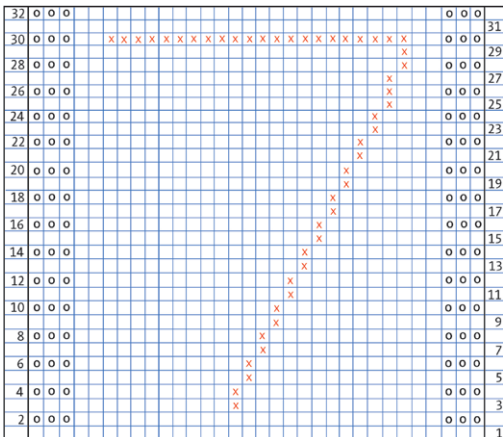
GRAPH 8 KEY

- = Using C2, knit on right side rows and purl on wrong side rows.
- O = Using C2, knit on wrong side rows.
- X = Using C5, knit on right side rows and purl on wrong side rows.



GRAPH 7 KEY

- = Using C5, knit on right side rows and purl on wrong side rows.
- O = Using C5, knit on wrong side rows.
- X = Using C2, knit on right side rows and purl on wrong side rows.



FINISHING

Sew up each Block around the foam. Sew in all ends.

BALA LEGGINGS

MEASUREMENTS

Months		0	3	6	12	24
Fits waist	cm	35	40	45	52	54
Length	cm	28	32	37	43	49

YARN REQUIRED

Lincraft Baby Grand 4ply	100g balls	1	1	1	2	2
OR Lincraft Cotton 4ply	50g balls	2	2	2	3	3
OR Lincraft Lullaby 4ply	50g balls	2	2	2	3	3

NEEDLES

A pair of 3.25mm knitting needles.
Wool needle for sewing up.

REQUIREMENTS

A stitch holder.
Hat elastic.

TENSION

28 sts and 36 rows to 10cm over stocking st, using 3.25mm needles.

BACK AND FRONT (make 2)

1st Leg:

Using 3.25mm needles, cast on 35 (37-39-43-45) sts.

1st row: K2, * P1, K1, rep from * to last st, K1.

2nd row: K1, * P1, K1, rep from * to end.

Last 2 rows form rib.

Cont in rib until work measures 11 (13-17-21-25) cm from beg, working last row on wrong side. **

Leave sts on a stitch holder.

2nd Leg:

Work as for 1st Leg to **.

Crotch:

1st row: Rib 32 (34-36-40-42), K3tog, slip sts from stitch holder onto left hand needle, sl 1, K1, pssso, rib to end ... 67 (71-75-83-87) sts.

Cont in rib until work measures 25 (29-34-40-46) cm from beg, working last row on right side.

Next row: Rib 3 (2-5-2-2), * rib 2tog, rib 2 (4-5-9-7), rep from * to last 4 (3-7-4-4) sts, rib 2tog, rib 2 (1-5-2-2) ... 51 (59-65-75-77) sts.

Waistband:

Work 10 rows rib.
Cast off in rib.

FINISHING

Join side and leg seams. Thread hat elastic through the 4th, 6th and 8th rows of waistband, on the wrong side. Sew in all ends.



UNISEX

4PLY

EASY

WHITLEY PRAM BLANKET

MEASUREMENTS

Width (approx)	cm	75
Length	cm	100

YARN REQUIRED

Lincraft Cosy Wool 8ply	100g balls	9
OR Lincraft Superwash 8ply	100g balls	9
OR Lincraft DK 8ply	100g balls	7
OR Lincraft Supersoft 8ply	50g balls	16

NEEDLES

A 4.00mm circular knitting needle (60cm long).
Wool needle for sewing in ends.

TENSION

38 sts and 30 rows to 10cm over rib, using 4.00mm needles.

NOTE

A circular needle is used to accommodate the large number of sts.
Work backwards and forwards in rows, not rounds.

PRAM BLANKET

Using 4.00mm circular needle, cast on 285 sts.

1st row: P5, * K3, P5, rep from * to end.

2nd row: K5, * P3, K5, rep from * to end.

Last 2 rows form rib.

Cont in rib until work measures 100cm from beg, ending with a 2nd row.

Cast off in rib.

FINISHING

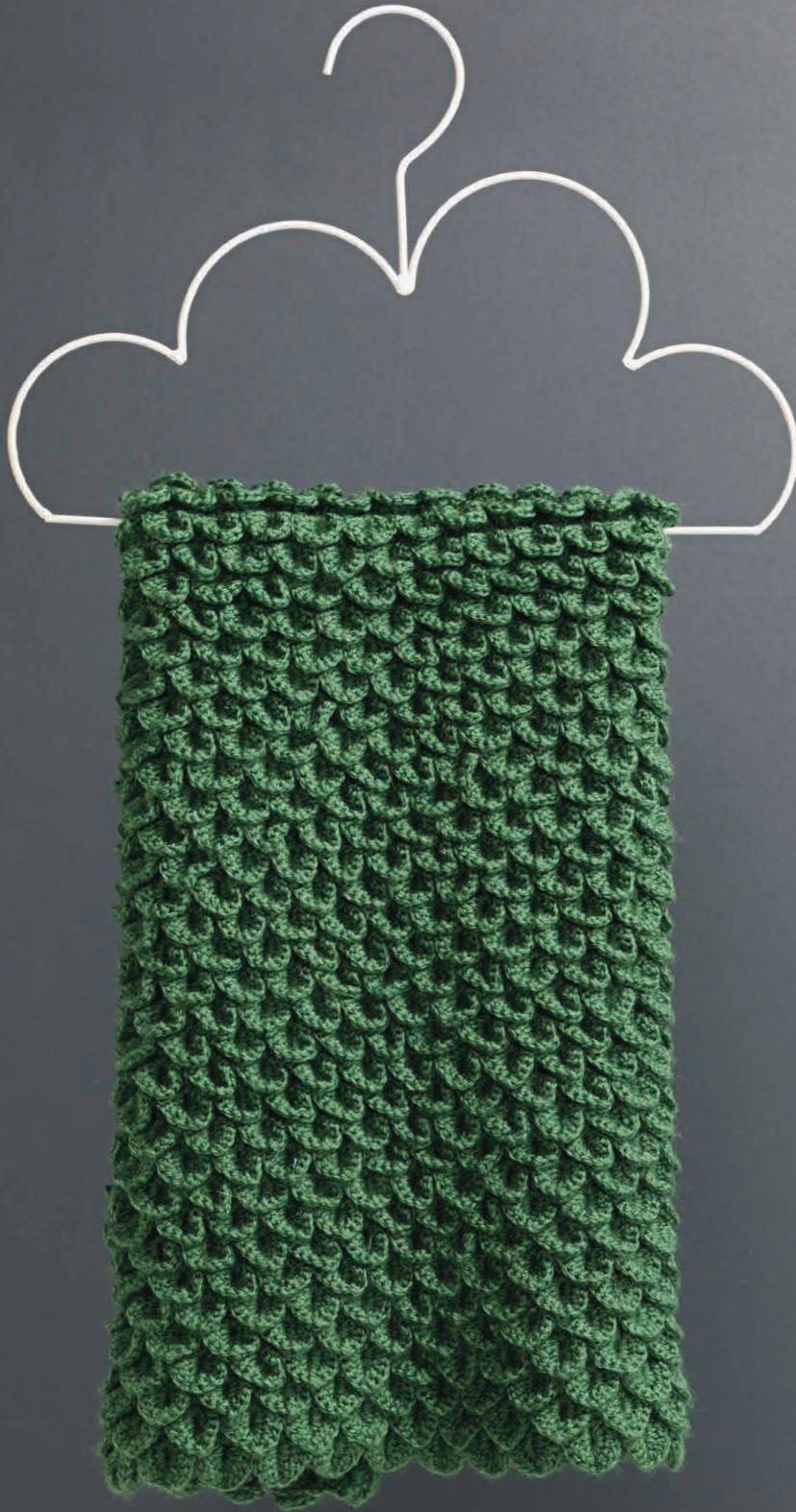
Sew in all ends.



8PLY

EASY

CROCODILE BLANKET PRAM SIZE



MEASUREMENTS

Width (approx)	cm	60
Length (approx)	cm	93

YARN REQUIRED

Lincraft Cosy Wool 8ply	100g balls	11
OR Lincraft Superwash 8ply	100g balls	10
OR Lincraft DK 8ply	100g balls	8
OR Lincraft Supersoft 8ply	50g balls	19

CROCHET HOOK

A 4.50mm crochet hook.

REQUIREMENTS

Wool needle for sewing in ends.

BLANKET

Using 4.50mm hook, make 124ch, turn.

1st row: 1tr in 4th ch from hook, [1ch, miss 2ch, 1tr in next ch, 1ch, miss 2ch, 2tr in next ch] 19 times, 1ch, miss 2ch, 1tr in next ch, 1ch, miss 2ch, 2tr in last ch, 1ch, turn.

2nd row: Turn work 90 degrees and work 5tr down first of 2tr of previous row, 1ch, work 5tr up second tr, [miss 1ch, sl st into next tr, miss 1tr, work 5tr down first of 2tr of previous row, 1ch, work 5tr up second tr] 20 times, 1ch, turn.

3rd row: [1tr in sp between the two 5tr groups, 1ch, 2tr in same place as sl st in previous row, 1ch] 20 times, 1tr in sp between the last two 5tr groups, 1ch, turn.

4th row: [Sl st in first tr, miss 1ch, turn work 90 degrees and work 5tr down first of 2tr of previous row, 1ch, work 5tr up second tr] 20 times, miss 1tr, sl st into last tr, 3ch, turn.

5th row: 1tr in sl st on previous row, [1ch, 1tr in sp between the two 5tr groups, 1ch, 2tr in same place as sl st in previous row] 20 times, 1ch, turn.

6th row: As 2nd row.

Rep 3rd to 6th rows 28 times or until work measures length desired.

Fasten off.

FINISHING

Sew in all ends.

8PLY

INTERMEDIATE

BACK

Using 3.25mm needles, cast on 61 (69-77-85-93) sts.

1st row: K1, * P1, K1, rep from * to end. 1st row forms moss st.

Work a further 9 (9-13-13-13) rows moss st and dec 2 sts evenly across last row ... 59 (67-75-83-91) sts.

Work in stocking st until work measures 12 (15-17-20-26) cm from beg, ending with a purl row.

Shape Armholes:

Cast off 3 (3-4-4-5) sts at beg of next 2 rows ... 53 (61-67-75-81) sts.

Dec one st at each end of next row, then every alt row until 49 (55-61-67-73) sts rem. Cont without shaping until work measures 22 (26-29-33-40) cm from beg, ending with a purl row.

Shape Shoulders:

Cast off 4 (5-5-6-7) sts at beg of next 4 rows, then 4 (4-6-7-7) sts at beg of next 2 rows. Leave rem 25 (27-29-29-31) sts on a stitch holder.

LEFT FRONT

Using 3.25mm needles, cast on 29 (33-35-39-43) sts.

Work 10 (10-14-14-14) rows moss st and dec 2 sts evenly across last row ... 27 (31-33-37-41) sts. **

Beg Patt:

1st row: K9 (13-15-19-23), P4, K10, P4.

2nd and alt rows: K4, P10, K4, P9 (13-15-19-23).

3rd row: K9 (13-15-19-23), P4, K6, K3tog, yfwd, K1, yrn, P4.

5th row: K9 (13-15-19-23), P4, K4, K3tog, K1, [yfwd, K1] twice, P4.

7th row: K9 (13-15-19-23), P4, K2, K3tog, K2, yfwd, K1, yfwd, K2, P4.

9th row: K9 (13-15-19-23), P4, K3tog, K3, yfwd, K1, yfwd, K3, P4.

10th row: As 2nd row.

Last 10 rows form patt for Left Front.

Work a further 20 (20-20-30-40) rows patt. Work in stocking st until work measures same as Back to beg of armhole shaping, ending with a purl row.

Shape Armhole:

Cast off 3 (3-4-4-5) sts at beg of next row ... 24 (28-29-33-36) sts.

Dec one st at armhole edge in every alt row until 22 (25-26-29-32) sts rem.

Cont without shaping until there are 13 (13-13-17-17) rows less than Back to beg of shoulder shaping, ending with a knit row.

Shape Neck:

Cast off 6 (6-6-6-7) sts at beg of next row ... 16 (19-20-23-25) sts.

Dec one st at neck edge in next row, then

every alt (alt-alt-4th-4th) row until 14 (15-18-20-22) sts rem, then every 4th (4th-4th-6th-6th) row until 12 (14-16-19-21) sts rem.

Purl 1 row.

Shape Shoulder:

Cast off 4 (5-5-6-7) sts at beg of next and alt row.

Work 1 row.

Cast off rem 4 (4-6-7-7) sts.

RIGHT FRONT

Work as for Left Front to **.

Beg Patt:

1st row: P4, K10, P4, K9 (13-15-19-23).

2nd and alt rows: P9 (13-15-19-23), K4, P10, K4.

3rd row: P4, yon, K1, yfwd, K3tog tbl, K6, P4, K9 (13-15-19-23).

5th row: P4, [K1, yfwd] twice, K1, K3tog tbl, K4, P4, K9 (13-15-19-23).

7th row: P4, K2, yfwd, K1, yfwd, K2, K3tog tbl, K2, P4, K9 (13-15-19-23).

9th row: P4, K3, yfwd, K1, yfwd, K3, K3tog tbl, P4, K9 (13-15-19-23).

10th row: As 2nd row.

Last 10 rows form patt for Right Front.

Work a further 20 (20-20-30-40) rows patt.

Work in stocking st until work measures same as Back to beg of armhole shaping, ending with a purl row.

Knit 1 row.

Shape Armhole:

Cast off 3 (3-4-4-5) sts at beg of next row ... 24 (28-29-33-36) sts.

Dec one st at armhole edge in next row, then every alt row until 22 (25-26-29-32) sts rem.

Cont without shaping until there are 14 (14-14-18-18) rows less than Back to beg of shoulder shaping, ending with a purl row.

Shape Neck:

Cast off 6 (6-6-6-7) sts at beg of next row ... 16 (19-20-23-25) sts.

Dec one st at neck edge in 2nd row, then every alt (alt-alt-4th-4th) row until 14 (15-18-20-22) sts rem, then every 4th (4th-4th-6th-6th) row until 12 (14-16-19-21) sts rem.

Work 2 rows.

Shape Shoulder:

Cast off 4 (5-5-6-7) sts at beg of next and alt row.

Work 1 row.

Cast off rem 4 (4-6-7-7) sts.

SLEEVES

Using 3.25mm needles, cast on 37 (39-43-45-49) sts.

Work 10 (10-14-14-14) rows moss st and dec 2 sts evenly across last row ... 35 (37-

41-43-47) sts.

Working in stocking st for rem, inc one st at each end of 5th row, then every alt (alt-4th-4th-4th) row until there are 45 (43-49-53-55) sts, then every 4th (4th-6th-6th-6th) row until there are 49 (53-55-61-69) sts.

Cont without shaping until work measures 11 (13-16-19-23) cm (or length desired) from beg, ending with a purl row.

Shape Top:

Cast off 2 (2-2-2-3) sts at beg of next 2 rows ... 45 (49-51-57-63) sts.

Dec one st at each end of next row, then every alt row until 27 (31-27-39-43) sts rem, then every row until 9 sts rem.

Cast off.

NECKBAND

Join shoulder seams.

With right side facing and using 3.25mm needles, knit up 15 (15-15-18-19) sts along Right Front neck shaping, knit across Back stitch holder, then knit up 15 (15-15-18-19) sts along Left Front neck shaping ... 55 (57-59-65-69) sts.

Work 9 (9-13-13-13) rows moss st.

Cast off in moss st.

RIGHT FRONT BAND

With right side facing and using 3.25mm needles, knit up 59 (69-81-91-111) sts along Right Front edge, incl side edge of Neckband.

For A Girl:

Work 5 rows moss st.

6th row: Moss 26 (36-46-44-55), [moss 2tog, yrn, moss 12 (12-13-12-15)] 2 (2-2-3-3) times, moss 2tog, yrn, moss 3 ... 3 (3-3-4-4) buttonholes.

Work 3 (3-7-7-7) rows moss st.

Cast off in moss st.

For A Boy:

Work 9 (9-13-13-13) rows moss st.

Cast off in moss st.

LEFT FRONT BAND

With right side facing and using 3.25mm needles, knit up 59 (69-81-91-111) sts along Left Front edge, incl side edge of Neckband.

For A Boy:

Work 5 rows moss st.

6th row: Moss 3, yrn, moss 2tog, [moss 12 (12-13-12-15), yrn, moss 2tog] 2 (2-2-3-3) times, moss 26 (36-46-44-55) ... 3 (3-3-4-4) buttonholes.

Work 3 (3-7-7-7) rows moss st.

Cast off in moss st.

For A Girl:

Work 9 (9-13-13-13) rows moss st.

Cast off in moss st.

FINISHING

Sew in Sleeves. Join side and Sleeve seams. Sew on buttons. Sew in all ends.

MEASUREMENTS

Months		0	3	6	12	24
Fits chest	cm	35	40	45	50	55
Garment measures	cm	41	46	52	58	63
Length	cm	22	26	29	33	40
Sleeve length	cm	11	13	16	19	23

YARN REQUIRED

Lincraft Baby Grand 4ply	100g balls	1	1	2	2	2
OR Lincraft Cotton 4ply	50g balls	2	3	3	4	5
OR Lincraft Lullaby 4ply	50g balls	2	3	3	4	5

NEEDLES

A pair of 3.25mm knitting needles.
Wool needle for sewing up.

REQUIREMENTS

A stitch holder.
3 (3-3-4-4) buttons.

TENSION

28 sts and 36 rows to 10cm over stocking st, using 3.25mm needles.

LEAF JACKET



EASY

UNISEX

4PLY

LITTLE BEAR COAT

MEASUREMENTS

Months		0	3	6	12	24
Fits chest	cm	35	40	45	50	55
Garment measures	cm	41	46	52	58	63
Length	cm	22	26	29	33	40
Sleeve length	cm	11	13	16	19	23

YARN REQUIRED

Lincraft Fairy Floss	50g balls	2	2	3	4	5
AND Lincraft Superwash 8ply	100g balls	2	2	2	3	4

NEEDLES

A pair of 5.50mm knitting needles.
Wool needle for sewing up.

REQUIREMENTS

4 (4-5-5-6) buttons.

TENSION

14.5 sts and 22 rows to 10cm over stocking st, using 5.50mm needles and both yarns tog.

BACK

Using 5.50mm needles and both yarns tog, cast on 29 (**33-37-41-45**) sts.
Knit 5 (**5-7-7-7**) rows garter st, first row is wrong side, and inc 2 sts evenly across last row ... 31 (**35-39-43-47**) sts.
Work in stocking st, beg with a knit row, until work measures 12 (**15-17-20-26**) cm from beg, ending with a purl row.

Shape Armholes:

Cast off 2 sts at beg of next 2 rows ... 27 (**31-35-39-43**) sts.
Dec one st at each end of next row, **Sizes 12 and 24 months only:** then in foll alt row ... 25 (**29-33-35-39**) sts.
Cont without shaping until work measures 22 (**26-29-33-40**) cm from beg, ending with a purl row.

Shape Shoulders:

Cast off 2 (**3-3-3-4**) sts at beg of next 4 rows, then 2 (**2-3-4-4**) sts at beg of next 2 rows.
Cast off rem 13 (**13-15-15-15**) sts.

LEFT FRONT

Using 5.50mm needles and both yarns tog, cast on 13 (**15-17-19-21**) sts.
Knit 5 (**5-7-7-7**) rows garter st, first row is wrong side, and inc one st in centre of last row ... 14 (**16-18-20-22**) sts.
Work in stocking st, beg with a knit row, until work measures same as Back to beg of armhole shaping, ending with a purl row. **

Shape Armhole:

Cast off 2 sts at beg of next row ... 12 (**14-16-18-20**) sts.
Dec one st at armhole edge in every alt row 1 (**1-1-2-2**) time/s ... 11 (**13-15-16-18**) sts.
Cont without shaping until there are 7 (**7-7-11-11**) rows less than Back to beg of shoulder shaping, ending with a knit row.

Shape Neck:

Cast off 3 sts at beg of next row ... 8 (**10-12-13-15**) sts.
Dec one st at neck edge in next row, then every 4th (**4th-alt-4th-4th**) row until 6 (**8-9-10-12**) sts rem.
Purl 1 row.

Shape Shoulder:

Cast off 2 (**3-3-3-4**) sts at beg of next and alt row.
Work 1 row.
Cast off rem 2 (**2-3-4-4**) sts.

RIGHT FRONT

Work as for Left Front to **.
Knit 1 row.

Shape Armhole:

Cast off 2 sts at beg of next row ... 12 (**14-16-18-20**) sts.
Dec one st at armhole edge in next row, **Sizes 12 and 24 months only:** then in foll alt row ... 11 (**13-15-16-18**) sts.
Cont without shaping until there are 8 (**8-8-12-12**) rows less than Back to beg of shoulder shaping, ending with a purl row.

Shape Neck:

Cast off 3 sts at beg of next row ... 8 (**10-12-13-15**) sts.
Dec one st at neck edge in 2nd row, then every 4th (**4th-alt-4th-4th**) row until 6 (**8-9-10-12**) sts rem.
Work 2 rows.

Shape Shoulder:

Cast off 2 (**3-3-3-4**) sts at beg of next and alt row.
Work 1 row.
Cast off rem 2 (**2-3-4-4**) sts.

SLEEVES

Using 5.50mm needles and both yarns tog, cast on 17 (**19-21-21-23**) sts.
Knit 5 (**5-7-7-7**) rows garter st, first row is wrong side, and inc two sts evenly across last row ... 19 (**21-23-23-25**) sts.
Working in stocking st for rem, beg with a knit row, inc one st at each end of 5th row, then every alt (**alt-6th-4th-4th**) row until there are 25 (**25-27-27-29**) sts, then every 4th (**4th-8th-6th-6th**) row until there are 27 (**29-29-33-37**) sts.
Cont without shaping until work measures 11 (**13-16-19-23**) cm (or length desired) from beg, ending with a purl row.

Shape Top:

Cast off 2 sts at beg of next 2 rows ... 23 (**25-25-29-33**) sts.
Dec one st at each end of next row, then every alt row until 11 (**11-7-11-19**) sts rem, then every row until 5 sts rem.
Cast off.

RIGHT FRONT BAND FOR GIRL OR LEFT FRONT BAND FOR BOY

With right side facing, using 5.50mm needles and both yarns tog, knit up 27 (**30-34-34-46**) sts along Right Front edge for Girl or Left

Front edge for Boy.

Knit 3 rows garter st.
4th row: K2, * yfwd, K2tog, K5 (**6-5-5-6**), rep from * to last 4 sts, yfwd, K2tog, K2 ... 4 (**4-5-5-6**) buttonholes.
Knit 1 (**1-3-3-3**) row/s garter st.
Cast off.

LEFT FRONT BAND FOR GIRL OR RIGHT FRONT BAND FOR BOY

Work to correspond with other Front Band, omitting buttonholes.

HOOD

Using 5.50mm needles and both yarns tog, cast on 49 (**55-63-71-73**) sts.
Knit 5 (**5-7-7-7**) rows garter st, first row is wrong side, and inc 5 sts evenly across last row ... 54 (**60-68-76-78**) sts.
Work in stocking st, beg with a knit row, until Hood measures 10 (**11-12-13-16**) cm from beg, ending with a purl row.

Shape Back of Hood:

Next row: K27 (**30-34-38-39**), turn.
Cont on these 27 (**30-34-38-39**) sts.
Dec one st at inside edge in every row until 22 (**25-29-33-34**) sts rem.
Cast off.
Join yarn to rem sts and knit to end.
Dec one st at inside edge in every row until 22 (**25-29-33-34**) sts rem.
Cast off.

EARS (make 4)

Using 5.50mm needles and both yarns tog, cast on 6 (**6-8-8-10**) sts.
Work 2 rows stocking st.
3rd row: K1, inc in next st, K2 (**2-4-4-6**), inc in next st, K1 ... 8 (**8-10-10-12**) sts.
Work 3 rows stocking st, beg with a purl row.
7th row: K3 (**3-4-4-5**), K2tog, K3 (**3-4-4-5**).
8th row: P2 (**2-3-3-4**), P3tog, P2 (**2-3-3-4**).
Cast off.

FINISHING

Join shoulder, side and Sleeve seams. Sew in Sleeves. Join centre back seam of Hood. Sew Hood in position, beg and ending at centre of Front Bands. Sew two Ear pieces tog, leaving cast off edges open. Rep for rem two pieces. Sew cast off edges of Ears to top of Hood. Sew on buttons. Sew in all ends.



— EASY —

UNISEX
8PLY

PLAIN AND SIMPLE BEANIE

MEASUREMENTS

Months		0	3	6	12	24
To fit head	cm	35	40	45	48	51

YARN REQUIRED

Lincraft Baby Grand 4ply	100g balls	1	1	1	1	1
OR Lincraft Cotton 4ply	50g balls	1	1	1	1	1
OR Lincraft Lullaby 4ply	50g balls	1	1	1	1	1

NEEDLES

A pair of 3.25mm knitting needles.
Wool needle for sewing up.

TENSION

27 sts and 55 rows to 10cm over garter st, using 3.25mm needles.

BEANIE WITH OPTIONAL BRIM

Using 3.25mm needles, cast on 77 (**89-99-105-113**) sts.
Knit in garter st until Beanie measures 10 (**11-12-13-15**) cm from beg, working last row on right side.

Next row: Knit and dec 6 (**8-8-4-2**) sts evenly across ... 71 (**81-91-101-111**) sts.

Shape Crown:

1st row: K1, * K2tog, K8, rep from * to end ... 64 (**73-82-91-100**) sts.

Knit 3 rows.

5th row: K1, * K2tog, K7, rep from * to end.

Knit 3 rows.

9th row: K1, * K2tog, K6, rep from * to end.

Knit 3 rows.

13th row: K1, * K2tog, K5, rep from * to end.

Knit 1 (**3-3-3-3**) row/s.

Next row: K1, * K2tog, K4, rep from * to end.

Knit 1 (**3-3-3-3**) row/s.

Next row: K1, * K2tog, K3, rep from * to end.

Knit 1 (**1-1-3-3**) row/s.

Next row: K1, * K2tog, K2, rep from * to end.

Knit 1 (**1-1-1-3**) row/s.

Next row: K1, * K2tog, K1, rep from * to end.

Knit 1 (**1-1-1-3**) row/s.

Next row: K1, * K2tog, rep from * to end ... 8 (**9-10-11-12**) sts.

Next row: K0 (**1-0-1-0**), * K2tog, rep from * to end ... 4 (**5-5-6-6**) sts.

Break off yarn, run end through rem sts, draw up tightly and fasten off securely.

FINISHING

Join back seam, reversing seam for lower 2 (**2-3-3-4**) cm if you want a turn up brim. Sew in all ends. If desired, turn up brim.

PLAIN AND SIMPLE BOOTIES

MEASUREMENTS

Months		0	3	6
To fit foot length	cm	7	8	9

YARN REQUIRED

Lincraft Baby Grand 4ply	100g balls	1	1	1
OR Lincraft Cotton 4ply	50g balls	1	1	1
OR Lincraft Lullaby 4ply	50g balls	1	1	1

NEEDLES

A pair of 3.25mm knitting needles.
Wool needle for sewing up.

TENSION

27 sts and 55 rows to 10cm over garter st, using 3.25mm needles.

BOOTIES (make 2 - beg at sole)

Using 3.25mm needles, cast on 35 (**39-43**) sts.

1st, 3rd and 5th rows: (wrong side) Knit.

2nd row: [K1, M1, K16 (**18-20**), M1] twice, K1 ... 39 (**43-47**) sts.

4th row: [K1, M1, K18 (**20-22**), M1] twice, K1 ... 43 (**47-51**) sts.

6th row: [K1, M1, K20 (**22-24**), M1] twice, K1 ... 47 (**51-55**) sts.

Knit 9 (**11-13**) rows garter st.

Shape Toe:

1st row: K19 (**21-23**), K2tog, K5, sl 1, K1, pssso, K1, turn.

2nd row: K2tog, K5, sl 1, K1, pssso, K1, turn.

Rep 2nd row 6 times.

9th row: K2tog, K5, sl 1, K1, pssso, knit to end of row ... 29 (**33-37**) sts.

10th row: Knit.

Beg Rib Cuff:

1st row: K1, * P1, K1, rep from * to end.

2nd row: P1, * K1, P1, rep from * to end.

Rep last 2 rows until rib cuff measures 6 (**7-8**) cm, ending with a 2nd row.

Cast off loosely in rib.

FINISHING

Using a flat seam, join sole and back seam. Sew in all ends. Fold over cuff.



— EASY —

UNISEX

4PLY

PLAIN AND SIMPLE MITTS

MEASUREMENTS

Months		0	3	6	12	24
To fit wrist	cm	12	13	14	15	16
Mitten length (approx)	cm	10	11	12	13	14.5

YARN REQUIRED

Lincraft Baby Grand 4ply	100g balls	1	1	1	1	1
OR Lincraft Cotton 4ply	50g balls	1	1	1	1	1
OR Lincraft Lullaby 4ply	50g balls	1	1	1	1	1

NEEDLES

A pair of 3.25mm knitting needles.
Wool needle for sewing up.

TENSION

27 sts and 55 rows to 10cm over garter st, using 3.25mm needles.

MITTENS (make 2)

Using 3.25mm needles, cast on 35 (**37-39-43-45**) sts.

1st row: K2, * P1, K1, rep from * to last st, K1.

2nd row: K1, * P1, K1, rep from * to end.

Last 2 rows form rib.

Work a further 10 (**10-12-12-14**) rows rib and dec 2 sts evenly across last row ... 33 (**35-37-41-43**) sts.

Knit in garter st until work measures 8 (**9-9.5-10.5-12**) cm from beg, working last row on wrong side and dec one st in centre of last row ... 32 (**34-36-40-42**) sts.

Shape Top:

1st row: [K1, K2tog tbl, K10 (**11-12-14-15**), K2tog, K1] twice ... 28 (**30-32-36-38**) sts.

2nd and alt rows: Knit.

3rd row: [K1, K2tog tbl, K8 (**9-10-12-13**), K2tog, K1] twice.

5th row: [K1, K2tog tbl, K6 (**7-8-10-11**), K2tog, K1] twice.

7th row: [K1, K2tog tbl, K4 (**5-6-8-9**), K2tog, K1] twice.

9th row: [K1, K2tog tbl, K2 (**3-4-6-7**), K2tog, K1] twice ... 12 (**14-16-20-22**) sts.

Sizes 6, 12 and 24 Months Only:

11th row: [K1, K2tog tbl, K (2-4-5), K2tog, K1] twice ... (12-16-18) sts.

All Sizes:

Next row: Knit.

Break off yarn, run end through rem sts, draw up tightly and fasten off securely.

FINISHING

Using a flat seam, join seam. Sew in all ends.



Also available in 8ply. Project available as a free download from www.lincraft.com.au



UNISEX
4PLY

— EASY —

PLAIN AND SIMPLE CARDIGAN AND PANTS

CARDIGAN BACK

Using 3.25mm needles, cast on 57 (64-72-80-87) sts.

Knit in garter st, first row is wrong side, until work measures 12 (15-17-20-26) cm from beg, working last row on wrong side.

Shape Armholes:

Cast off 3 (3-4-4-5) sts at beg of next 2 rows ... 51 (58-64-72-77) sts.

Dec one st at each end of next row, then every alt row until 47 (54-58-64-69) sts rem.

Cont without shaping until work measures 22 (26-29-33-40) cm from beg, working last row on wrong side.

Shape Shoulders:

Cast off 4 (5-5-6-7) sts at beg of next 4 rows, then 3 (4-5-6-6) sts at beg of next 2 rows.

Leave rem 25 (26-28-28-29) sts on a stitch holder.

LEFT FRONT

Using 3.25mm needles, cast on 26 (29-32-36-40) sts.

Knit in garter st, first row is wrong side, until work measures same as Back to beg of armhole shaping, working last row on wrong side. **

Shape Armhole:

Cast off 3 (3-4-4-5) sts at beg of next row ... 23 (26-28-32-35) sts.

Dec one st at armhole edge in every alt row until 21 (24-25-28-31) sts rem.

Cont without shaping until there are 21 (21-23-23-27) rows less than Back to beg of shoulder shaping, working last row on right side.

Shape Neck:

Cast off 6 (6-7-7-7) sts at beg of next row ... 15 (18-18-21-24) sts.

Dec one st at neck edge in next row, then every 6th (6th-10th-10th-8th) row until 11 (14-15-18-20) sts rem.

Knit 1 row.

Shape Shoulder:

Cast off 4 (5-5-6-7) sts at beg of next and alt row.

Knit 1 row.

Cast off rem 3 (4-5-6-6) sts.

RIGHT FRONT

Work as for Left Front to **.

Knit 1 row.

Shape Armhole:

Cast off 3 (3-4-4-5) sts at beg of next row ... 23 (26-28-32-35) sts.

Dec one st at armhole edge in next row, then every alt row until 21 (24-25-28-31) sts rem.

Cont without shaping until there are 22 (22-24-24-28) rows less than Back to beg of shoulder shaping, working last row on wrong side.

Shape Neck:

Cast off 6 (6-7-7-7) sts at beg of next row ... 15 (18-18-21-24) sts.

Knit 1 row.

Dec one st at neck edge in next row, then every 6th (6th-10th-10th-8th) row until 11 (14-15-18-20) sts rem.

Knit 2 rows.

Shape Shoulder:

Cast off 4 (5-5-6-7) sts at beg of next and alt row.

Knit 1 row.

Cast off rem 3 (4-5-6-6) sts.

SLEEVES

Using 3.25mm needles, cast on 34 (38-40-42-46) sts.

Working in garter st, first row is wrong side, inc one st at each end of 10th row, then every 4th (8th-10th-10th-10th) row until there are 38 (46-52-50-56) sts, then every 6th (10th-12th-12th-12th) row until there are 48 (50-54-58-66) sts.

Cont without shaping until work measures 11 (13-16-19-23) cm (or length desired) from beg, working last row on wrong side.

Shape Top:

Cast off 2 (2-2-2-3) sts at beg of next 2 rows ... 44 (46-50-54-60) sts.

Dec one st at each end of next row, then every 4th row until 38 (38-42-46-54) sts rem, then every alt row until 8 sts rem.

Knit 1 row.

Cast off.

NECKBAND

Join shoulder seams.

With right side facing and using 3.25mm needles, knit up 17 (17-19-19-21) sts along Right Front neck shaping, knit across Back stitch holder, then knit up 17 (17-19-19-21) sts along Left Front neck shaping ... 59 (60-66-66-71) sts.

Knit 11 (11-15-17-17) rows garter st. Cast off.

RIGHT FRONT BAND FOR GIRL OR LEFT FRONT BAND FOR BOY

With right side facing and using 3.25mm needles, knit up 54 (66-76-86-102) sts along Right Front edge for Girl or Left Front edge for Boy, incl side edge of Neckband.

Knit 5 (5-7-7-7) rows garter st.

Next row: K2, K2tog, yfwd, * K14 (13-12-14-14), K2tog, yfwd, rep from * to last 2 sts, K2 ... 4 (5-6-6-7) buttonholes.

Knit 5 (5-7-9-9) rows garter st.

Cast off.

LEFT FRONT BAND FOR GIRL OR RIGHT FRONT BAND FOR BOY

Work to correspond with other Front Band, omitting buttonholes.

FINISHING

Sew in Sleeves. Join side and Sleeve seams. Sew on buttons. Sew in all ends.

PANTS

BACK AND FRONT (make 2)

1st Leg:

Using 3.25mm needles, cast on 33 (35-39-41-43) sts.

Knit in garter st, first row is wrong side, until work measures 11 (13-17-21-25) cm from beg, working last row on wrong side. **

Leave sts on a stitch holder.

2nd Leg:

Work as for 1st Leg to **.

Crotch:

1st row: K31 (33-37-39-41), K2tog, slip sts from stitch holder onto left hand needle, sl 1, K1, pssso, knit to end ... 64 (68-76-80-84) sts. Cont until work measures 25 (29-34-40-46) cm from beg, working last row on right side.

Next row: K3 (3-1-3-1), * K2tog, K2 (4-4-10-8), rep from * to last 5 (5-3-5-3) sts, K2tog, K3 (3-1-3-1) ... 49 (57-63-73-75) sts.

Waistband:

Knit 16 rows garter st.

Cast off.

FINISHING

Join side and leg seams. Thread hat elastic through the 2nd, 8th and 14th rows of waistband, on the wrong side. Sew in all ends.

MEASUREMENTS

Months		0	3	6	12	24
--------	--	---	---	---	----	----

CARDIGAN

Fits chest	cm	35	40	45	50	55
Garment measures	cm	41	46	52	58	63
Length	cm	22	26	29	33	40
Sleeve length	cm	11	13	16	19	23

PANTS

Fits waist	cm	35	40	45	52	54
Length	cm	28	32	37	43	49

YARN REQUIRED

Lincraft Baby Grand 4ply	100g balls	2	2	3	4	4
OR Lincraft Cotton 4ply	50g balls	4	5	6	8	10
OR Lincraft Lullaby 4ply	50g balls	4	5	6	8	10

NEEDLES

A pair of 3.25mm knitting needles.
Wool needle for sewing up.

REQUIREMENTS

A stitch holder.
4 (5-6-6-7) buttons.
Hat elastic.

TENSION

27 sts and 55 rows to 10cm over garter st, using 3.25mm needles.



MEASUREMENTS

Months		0	3	6	12	24
--------	--	---	---	---	----	----

CARDIGAN

Fits chest	cm	35	40	45	50	55
Garment measures	cm	41	46	52	58	63
Length	cm	22	26	29	33	40
Sleeve length	cm	11	13	16	19	23

PANTS

Fits waist	cm	35	40	45	52	54
Length	cm	28	32	37	43	49

YARN REQUIRED

Lincraft Cosy Wool 8ply	100g balls	3	4	5	7	9
OR Lincraft Superwash 8ply	100g balls	3	4	5	7	9
OR Lincraft DK 8ply	100g balls	3	3	4	5	7
OR Lincraft Supersoft 8ply	50g balls	6	7	9	13	16

NEEDLES

A pair of 4.00mm knitting needles.
Wool needle for sewing up.

REQUIREMENTS

A stitch holder.
4 (5-5-6-6) buttons.
Hat elastic.

TENSION

21 sts and 43 rows to 10cm over garter st, using 4.00mm needles.

CARDIGAN

BACK

Using 4.00mm needles, cast on 45 (51-57-63-69) sts.
Knit in garter st, first row is wrong side, until work measures 12 (15-17-20-26) cm from beg, working last row on wrong side.

Shape Armholes:

Cast off 2 (3-3-3-4) sts at beg of next 2 rows ... 41 (45-51-57-61) sts.
Dec one st at each end of next row, then every alt row until 37 (41-47-51-55) sts rem.
Cont without shaping until work measures 22 (26-29-33-40) cm from beg, working last row on wrong side.

Shape Shoulders:

Cast off 3 (4-4-5-5) sts at beg of next 4 rows, then 3 (3-5-4-6) sts at beg of next 2 rows.
Leave rem 19 (19-21-23-23) sts on a stitch holder.

LEFT FRONT

Using 4.00mm needles, cast on 20 (23-25-28-31) sts.
Knit in garter st, first row is wrong side, until work measures same as Back to beg of armhole shaping, working last row on wrong side. **

Shape Armhole:

Cast off 2 (3-3-3-4) sts at beg of next row ... 18 (20-22-25-27) sts.
Dec one st at armhole edge in every alt row until 16 (18-20-22-24) sts rem.
Cont without shaping until there are 17 (17-17-17-21) rows less than Back to beg of shoulder shaping, working last row on right side.

Shape Neck:

Cast off 4 (4-4-5-5) sts at beg of next row ... 12 (14-16-17-19) sts.
Dec one st at neck edge in next row, foll 6th (6th-6th-6th-8th) row,

then foll 8th (8th-8th-8th-10th) row ... 9 (11-13-14-16) sts.
Knit 1 row.

Shape Shoulder:

Cast off 3 (4-4-5-5) sts at beg of next and alt row.
Knit 1 row.
Cast off rem 3 (3-5-4-6) sts.

RIGHT FRONT

Work as for Left Front to **.
Knit 1 row.

Shape Armhole:

Cast off 2 (3-3-3-4) sts at beg of next row ... 18 (20-22-25-27) sts.
Dec one st at armhole edge in next row, then every alt row until 16 (18-20-22-24) sts rem.
Cont without shaping until there are 18 (18-18-18-22) rows less than Back to beg of shoulder shaping, working last row on wrong side.

Shape Neck:

Cast off 4 (4-4-5-5) sts at beg of next row ... 12 (14-16-17-19) sts.
Knit 1 row.
Dec one st at neck edge in next row, foll 6th (6th-6th-6th-8th) row, then foll 8th (8th-8th-8th-10th) row ... 9 (11-13-14-16) sts.
Knit 2 rows.

Shape Shoulder:

Cast off 3 (4-4-5-5) sts at beg of next and alt row.
Knit 1 row.
Cast off rem 3 (3-5-4-6) sts.

SLEEVES

Using 4.00mm needles, cast on 27 (29-31-33-35) sts.
Working in garter st, first row is wrong side, inc one st at each end of 8th row, then every 6th (8th-10th-8th-8th) row until there are 35 (37-35-37-39) sts, then every 8th (10th-12th-10th-10th) row until there are 37 (39-41-47-53) sts.
Cont without shaping until work measures 11 (13-16-19-23) cm (or length desired) from beg, working last row on wrong side.

Shape Top:

Cast off 2 sts at beg of next 2 rows ... 33 (35-37-43-49) sts.
Dec one st at each end of next row, then every 4th row until 25 (27-27-37-45) sts rem, then every alt row until 7 sts rem.
Knit 1 row.
Cast off.

NECKBAND

Join shoulder seams.
With right side facing and using 4.00mm needles, knit up 13 (13-13-14-16) sts along Right Front neck shaping, knit across Back stitch holder, then knit up 13 (13-13-14-16) sts along Left Front neck shaping ... 45 (45-47-51-55) sts.
Knit 9 (9-11-13-13) rows garter st.
Cast off.

RIGHT FRONT BAND FOR GIRL OR LEFT FRONT BAND FOR BOY

With right side facing and using 4.00mm needles, knit up 42 (50-58-66-81) sts along Right Front edge for Girl or Left Front edge for Boy, incl side edge of Neckband.
Knit 3 (3-5-5-5) rows garter st.
Next row: K2, K2tog, yfwd, * K10 (9-11-10-13), K2tog, yfwd, rep from * to last 2 sts, K2 ... 4 (5-5-6-6) buttonholes.
Knit 5 (5-5-7-7) rows garter st.
Cast off.

LEFT FRONT BAND FOR GIRL OR RIGHT FRONT BAND FOR BOY

Work to correspond with other Front Band, omitting buttonholes.

FINISHING

Sew in Sleeves. Join side and Sleeve seams. Sew on buttons. Sew in all ends.

PLAIN AND SIMPLE CARDIGAN AND PANTS

PANTS

BACK AND FRONT (make 2)

1st Leg:

Using 4.00mm needles, cast on 26 (28-30-33-35) sts. Knit in garter st, first row is wrong side, until work measures 11 (13-17-21-25) cm from beg, working last row on wrong side. **

Leave sts on a stitch holder.

2nd Leg:

Work as for 1st Leg to **.

Crotch:

1st row: K24 (26-28-31-33), K2tog, slip sts from stitch holder onto left hand needle, sl 1, K1, pssso, knit to end ... 50 (54-58-64-68) sts.

Cont until work measures 25 (29-34-40-46) cm from beg, working last row on right side.

Next row: K4 (2-4-4-5), * K2tog, K2 (4-4-7-5), rep from * to last 6 (4-6-6-7) sts, K2tog, K4 (2-4-4-5) ... 39 (45-49-57-59) sts.

Waistband:

Knit 12 rows garter st.

Cast off.

FINISHING

Join side and leg seams. Thread hat elastic through the 2nd, 6th and 10th rows of waistband, on the wrong side. Sew in all ends.



UNISEX

8PLY

EASY

MEASUREMENTS

SMALL MUSHROOM RATTLE

Height (approx)	cm	15
Diameter (approx)	cm	11

LARGE MUSHROOM TOY

Height (approx)	cm	24
Diameter (approx)	cm	26

YARN REQUIRED

SMALL MUSHROOM RATTLE

Lincraft Cosy Wool 8ply	100g balls	
1st Colour (C1 - white)		Small quantity
2nd Colour (C2 - red)		Small quantity

LARGE MUSHROOM TOY

Lincraft Cosy Wool 8ply	100g balls	
1st Colour (C1 - white)		1
2nd Colour (C2 - red)		1

NEEDLES

A pair of 4.00mm knitting needles.
Wool needle for sewing up.

REQUIREMENTS

3 large jingle bells for Small Mushroom Rattle.
Washable filling.
Sullivans needle felting kit and white wool roving (available at Lincraft).

TENSION

22 sts and 30 rows to 10cm over stocking st, using 4.00mm needles.

SMALL MUSHROOM RATTLE

Base:

Using 4.00mm needles and C1, cast on 3 sts.

1st row: Inc once in each st ... 6 sts.

2nd row: Inc once in each st ... 12 sts.

Work 2 rows stocking st.

5th row: Inc once in each st ... 24 sts.

Bottom Edge:

6th row (wrong side): Knit.

Stem:

Work 6 rows stocking st, beg with a knit row.

13th row: [K4, K2tog] 4 times ... 20 sts.

Work 5 rows stocking st, beg with a purl row.

19th row: [K4, K2tog] 3 times, K2 ... 17 sts.

Work 5 rows stocking st, beg with a purl row.

25th row: [K3, K2tog] 3 times, K2 ... 14 sts.

Top Of Stem:

26th row (wrong side): Knit.

Underside Of Cap:

27th row: Inc once in each st ... 28 sts.

Purl 1 row.

29th row: Inc once in each st ... 56 sts.

Work 2 rows stocking st, beg with a purl row.

32nd row: * P3, inc purlways in next st, rep from * to end ... 70 sts.

Knit 2 rows garter st.

Mushroom Cap:

Using C2 for rem, knit 3 rows garter st.

38th and alt rows: Purl.

39th row: K10, [K2tog, K10] 5 times ... 65 sts.

41st row: [K2tog, K9] 5 times, K2tog, K8 ... 59 sts.

43rd row: [K2tog, K8] 5 times, K2tog, K7 ... 53 sts.

45th row: [K2tog, K7] 5 times, K2tog, K6 ... 47 sts.

47th row: [K2tog, K6] 5 times, K2tog, K5 ... 41 sts.

49th row: [K2tog, K5] 5 times, K2tog, K4 ... 35 sts.

51st row: [K2tog, K4] 5 times, K2tog, K3 ... 29 sts.

53rd row: [K2tog, K3] 5 times, K2tog, K2 ... 23 sts.

55th row: K1, * K2tog, rep from * to end ... 12 sts.

57th row: * K2tog, rep from * to end ... 6 sts.

Break off yarn, run end through rem sts, draw up tightly and fasten off securely.

FINISHING

Use felting kit and wool roving to apply dots to Mushroom Cap. (Please refer to page 4). Sew Mushroom Cap, adding 'jingle bells' and stuffing firmly. Sew up Stem and stuff firmly. Sew in all ends.

LARGE MUSHROOM TOY

Base:

Using 4.00mm needles and C1, cast on 3 sts.

1st row: Inc once in each st ... 6 sts.

2nd, 4th and 6th rows: Knit.

3rd row: Inc once in each st ... 12 sts.

5th row: Inc once in each st ... 24 sts.

7th row: Inc once in each st ... 48 sts.

8th row: Purl.

9th row: * K1, inc in next st, rep from * to end ... 72 sts.

Bottom Edge:

10th row (wrong side): Knit.

Stem:

Work 12 rows stocking st, beg with a knit row.

23rd row: [K8, K2tog] 7 times, K2 ... 65 sts.

Work 5 rows stocking st, beg with a purl row.

29th row: [K2tog, K6] 8 times, K1 ... 57 sts.

Work 5 rows stocking st, beg with a purl row.

35th row: [K2tog, K5] 8 times, K1 ... 49 sts.

Work 3 rows stocking st, beg with a purl row.

39th row: [K2tog, K4] 8 times, K1 ... 41 sts.

Work 4 rows stocking st, beg with a purl row.

Top Of Stem:

44th row (wrong side): Knit.

Underside Of Cap:

45th row: Inc once in each st ... 82 sts.

Work 2 rows stocking st, beg with a purl row.

48th row: Inc purlways in each st ... 164 sts.

Work 4 rows stocking st, beg with a knit row.

53rd row: * K9, inc in next st, rep from * to last 4 sts, K4 ... 180 sts.

Purl 1 row.

Knit 2 rows garter st.

Mushroom Cap:

Using C2 for rem, knit 5 rows garter st.

62nd and alt rows: Purl.

63rd row: * K2tog, K16, rep from * to end ... 170 sts.

65th row: * K2tog, K15, rep from * to end ... 160 sts.

67th row: * K2tog, K14, rep from * to end ... 150 sts.

69th row: * K2tog, K13, rep from * to end ... 140 sts.

71st row: * K2tog, K12, rep from * to end ... 130 sts.

73rd row: * K2tog, K11, rep from * to end ... 120 sts.

75th row: * K2tog, K10, rep from * to end ... 110 sts.

77th row: * K2tog, K9, rep from * to end ... 100 sts.

79th row: * K2tog, K8, rep from * to end ... 90 sts.

81st row: * K2tog, K7, rep from * to end ... 80 sts.

83rd row: * K2tog, K6, rep from * to end ... 70 sts.

85th row: * K2tog, K5, rep from * to end ... 60 sts.

87th row: * K2tog, K4, rep from * to end ... 50 sts.

89th row: * K2tog, K3, rep from * to end ... 40 sts.

91st row: * K2tog, K2, rep from * to end ... 30 sts.
93rd row: * K2tog, K1, rep from * to end ... 20 sts.
95th row: * K2tog, rep from * to end ... 10 sts.
Break off yarn, run end through rem sts, draw up tightly and fasten off securely.

FINISHING

Use felting kit and wool roving to apply dots to Mushroom Cap. (Please refer to page 4). Sew Mushroom Cap and stuff firmly. Sew up Stem and stuff firmly. Sew in all ends.

ENCHANTED MUSHROOM RATTLE AND TOY



— EASY —

8PLY

KAILAN SOAKER PANTS

MEASUREMENTS

Months		0	3	6	12	24
Fits waist	cm	35	40	45	52	54
Length (approx)	cm	17	19	20	22	24

YARN REQUIRED

Lincraft Cosy Wool 8ply	100g balls	1	1	1	2	2
OR Lincraft Superwash 8ply	100g balls	1	1	1	2	2
OR Lincraft DK 8ply	100g balls	1	1	1	1	1
OR Lincraft Supersoft 8ply	50g balls	2	2	2	3	3

NEEDLES

A pair of 4.00mm knitting needles.
Wool needle for sewing up.

REQUIREMENTS

Hat elastic.

TENSION

22 sts and 30 rows to 10cm over stocking st, using 4.00mm needles.

BACK AND FRONT (worked in one piece – beg at Front waistband)

Using 4.00mm needles, cast on 41 (45-51-59-61) sts.

1st row: K2, * P1, K1, rep from * to last st, K1.

2nd row: K1, * P1, K1, rep from * to end.

Last 2 rows form rib.

Work a further 7 rows rib.

10th row: Rib 4 (0-3-2-3), * inc in next st, rib 2 (3-4-5-5), rep from * to last 4 (1-3-3-4) st/s, inc in next st, rib 3 (0-2-2-3) ... 53 (57-61-69-71) sts.

Work 20 (26-26-30-34) rows stocking st.

Shape Leg Openings:

Dec one st at each end of next row, then every alt row until 33 (37-39-45-45) sts rem.

Work 5 rows stocking st, beg with a purl row.

Inc one st at each end of next row, then every alt row until there are 53 (57-61-69-71) sts.

Work 36 (42-42-46-50) rows stocking st, beg with a purl row. [There are more rows in the Back than Front, to allow for a nappy].

Next row: P4 (0-3-2-3), * P2tog, P2 (3-4-5-5), rep from * to last 5 (2-4-4-5) sts, P2tog, P3 (0-2-2-3) ... 41 (45-51-59-61) sts.

Work 10 rows rib.

Cast off in rib.

LEG EDGINGS

With right side facing and using 4.00mm needles, knit up 34 (34-36-40-44) sts along Front and Back leg openings on one side.

Knit 1 row.

Cast off knitways.

Rep for other side.

FINISHING

Fold work in half and sew side and Leg Edging seams, noting that there are more rows in the Back than Front between the leg shaping and waistband so joining two Back rows to one Front row as needed. Thread hat elastic through the 4th, 6th and 8th rows of waistband, on the wrong side. Sew in all ends.



EASY

MEASUREMENTS

Height (approx) cm 35

YARN REQUIRED

Lincraft Fairy Floss 50g balls 1

NEEDLES

A pair of 4.50mm knitting needles.

A pair of 5.00mm knitting needles.

Wool needle for sewing up.

REQUIREMENTS

Washable filling.

Scraps of black yarn to embroider eyes, nose and mouth.

TENSION

14 sts and 26 rows to 10cm over garter st, using 5.00mm needles.

NOTE

The head is knitted double i.e. the back and front of the head are knitted at the same time. When working the 5th row of the head, the purl sts on one row are for the front of the head and the purl sts on the alternate rows are for the back of the head. The separation between the front and back of the head will become more obvious once the ears are knitted.

TEDDY BEAR (worked in one piece)

Using 5.00mm needles, cast on one st.

1st row: Knit into front and back of st ... 2 sts.

2nd row: Inc in first st, K1 ... 3 sts.

3rd row: Inc in first st, knit to end ... 4 sts.

Rep 3rd row 3 times ... 7 sts.

7th row: K3, M1, knit to end ... 8 sts.

Rep 7th row until there are 40 sts.

Cast on 12 sts at beg of next 2 rows (for paws) ... 64 sts.

Knit 6 rows garter st.

Cast off 12 sts at beg of next 2 rows ... 40 sts.

Dec one st at beg of every row until 28 sts rem.

Shape Head (see note above):

Change to 4.50mm needles.

1st row: * K2tog, rep from * to end ... 14 sts.

Knit 2 rows.

4th row: Inc once in each st ... 28 sts.

5th row: * P1, sl 1, rep from * to end.

Rep 5th row until head measures 9cm.

Shape Ears:

1st row: P3tog, return st to left hand needle, cast on 8 sts, then P3tog, P6, [you now have 7 sts on right hand needle and 25 sts on left hand needle], turn.

2nd row: P5, P2tog, turn.

3rd row: P7, turn.

4th row: P3, turn.

5th row: P5, turn.

6th row: P7, P2tog, turn.

7th row: P9, turn.

8th row: P7, P2tog, turn.

9th row: Cast off 9 sts, sl 1, * P1, sl 1, rep from * to end, turn ... 20 sts.

Beg 2nd Ear:

1st row: P3tog, return st to left hand needle, cast on 8 sts, then P3tog, P6, [you now have 7 sts on right hand needle and 17 sts on left hand needle], turn.

Work 2nd to 9th rows as for 1st ear ... 12 sts.

FINISHING

Cut a 25cm length of yarn. Thread yarn through every alt st on needle, then back through rem sts. Remove knitting needle and stuff head lightly. Pull yarn tightly to close top of head and secure. Using black yarn embroider eyes, nose and mouth. Tie a knot in each paw. Sew in all ends.

WOOSY CUDDLE TOY



EASY

MARLO MOCCASINS

MEASUREMENTS

Months		0	3	6	12	24
To fit foot length (approx)	cm	7	8	9	11	14

YARN REQUIRED

Lincraft Cosy Wool 8ply	100g balls	1	1	1	1	1
OR Lincraft Superwash 8ply	100g balls	1	1	1	1	1
OR Lincraft DK 8ply	100g balls	1	1	1	1	1
OR Lincraft Supersoft 8ply	50g balls	1	1	1	1	1

NEEDLES

A pair of 3.75mm knitting needles.
Wool needle for sewing up.

REQUIREMENTS

A pair of leather elbow patches (available from Lincraft).
A metre of leather thonging or ribbon (cut in half).

TENSION

22.5 sts and 46 rows to 10cm over garter st, using 3.75mm needles.

MOCCASINS (make 2)

Using 3.75mm needles, cast on 30 (34-38-48-60) sts.

1st row (wrong side): Knit.

2nd row: Inc in first st, K13 (15-17-22-28), [inc once in next st] twice, K13 (15-17-22-28), inc in last st ... 34 (38-42-52-64) sts.

3rd row: Knit.

4th row: Inc in first st, K15 (17-19-24-30), [inc once in next st] twice, K15 (17-19-24-30), inc in last st ... 38 (42-46-56-68) sts.

5th row: Knit.

6th row: Inc in first st, K17 (19-21-26-32), [inc once in next st] twice, K17 (19-21-26-32), inc in last st ... 42 (46-50-60-72) sts.

Knit 13 (13-15-17-19) rows garter st.

Beg Instep:

1st row: K25 (27-29-34-40), K2tog, turn.

2nd row: Sl 1, K8, K2tog, turn.

Rep 2nd row until 24 (28-32-40-50) sts rem.

Next row: Sl 1, knit to end.

Beg Fold Down Cuff:

1st row: K12 (14-16-20-25), turn.

Cont on these 12 (14-16-20-25) sts.

Knit 14 (16-18-20-22) rows garter st.

Cast off these 12 (14-16-20-25) sts.

With wrong side facing, join yarn to rem 12 (14-16-20-25) sts.

Knit 15 (17-19-21-23) rows garter st.

Cast off.

FINISHING

Using a flat seam sew cast on edges tog to form sole. Sew back seam. Trim elbow patches to size required for sole and stitch in place. Sew in all ends. Fold cuff down. Use leather thonging or ribbon to tie around ankle.



8PLY

UNISEX

Moccasin Template

EASY

TAVI MOUSE

MEASUREMENTS

Height (approx) cm 10

YARN REQUIRED

Lincraft Baby Grand 4ply	100g balls	1
OR Lincraft Cotton 4ply	50g balls	1
OR Lincraft Lullaby 4ply	50g balls	1

NEEDLES

A pair of 3.25mm knitting needles.
Two double-pointed 3.25mm knitting needles.
Wool needle for sewing up.

REQUIREMENTS

Washable filling.
Scraps of black yarn to embroider eyes, nose and mouth.

TENSION

28 sts and 36 rows to 10cm over stocking st, using 3.25mm needles.

HEAD (beg at nose)

Using a pair of 3.25mm needles, cast on 5 sts.
Working in stocking st throughout, work 2 rows.
3rd row: Inc in first st, knit to last st, inc in last st ... 7 sts.
4th row: Purl.
Rep 3rd and 4th rows twice ... 11 sts.
9th row: K2, * inc in next st, rep from * to last st, K1 ... 19 sts.
Work 3 rows.
13th row: K1, * K2tog, rep from * to end ... 10 sts.
Break off yarn, run end through rem sts, draw up tightly and fasten off securely.

BODY (beg at neck edge)

Using a pair of 3.25mm needles, cast on 5 sts.
Working in stocking st throughout, work 2 rows.
3rd row: Inc once in each st ... 10 sts.
4th row: Purl.
5th row: * K1, inc in next st, rep from * to end ... 15 sts.
6th row: Purl.
7th row: K2, * inc in next st, K2, rep from * to last st, K1 ... 19 sts.
Work 5 rows.
13th row: K1, * K2tog, K1, rep from * to end ... 13 sts.
Purl 1 row.
15th row: K1, * K2tog, rep from * to end ... 7 sts.
Break off yarn, run end through rem sts, draw up tightly and fasten off securely.

ARMS (beg at top of arm - make 2)

Using a pair of 3.25mm needles, cast on 4 sts.
Working in stocking st throughout, work 2 rows.
3rd row: Inc once in each st ... 8 sts.
Work 9 rows.
13th row: * K2tog, rep from * to end ... 4 sts.
Break off yarn, run end through rem sts, draw up tightly and fasten off securely.

LEGS (beg at sole - make 2)

Using a pair of 3.25mm needles, cast on 5 sts.
Working in stocking st throughout, work 2 rows.
3rd row: K1, inc in next 3 sts, K1 ... 8 sts.

Purl 1 row.
5th row: Inc in first 2 sts, [K1, inc in next 2 sts] twice ... 14 sts.
Work 3 rows.
9th row: K3, [K3tog] 3 times, K2 ... 8 sts.
Work 5 rows.
15th row: * K2tog, rep from * to end ... 4 sts.
Break off yarn, run end through rem sts, draw up tightly and fasten off securely.

EARS (make 4)

Using a pair of 3.25mm needles, cast on 4 sts.
Working in stocking st throughout, work 2 rows.
3rd row: K1, [inc in next st] twice, K1 ... 6 sts.
Work 2 rows.
6th row: P2, P2tog, P2 ... 5 sts.
Cast off.

TAIL

Using two double-pointed 3.25mm needles, cast on 3 sts.
1st row: Knit.
** Do not turn. Slide sts to other end of needle and K3.
Rep from ** until work measures 4.5cm or length desired.
Cast off.

FINISHING

Head: Thread yarn through cast on sts and gather edge of nose. Using black yarn, embroider eyes, nose and mouth. Sew seams leaving a small opening for stuffing. Stuff firmly then close opening.
Body: Sew seams leaving a small opening for stuffing. Stuff firmly then close opening. Sew Head onto Body.
Arms: Sew seams leaving a small opening for stuffing. Stuff firmly then close opening. Sew Arms to Body.
Legs: Sew Leg seams leaving a small opening for stuffing. Stuff firmly then close opening. Sew Legs to Body.
Ears: Sew two Ear pieces tog, leaving cast off edges open. Rep for rem two pieces. Stuff lightly. Sew cast off edges to side of Head.
Tail: Sew in position.
Sew in all ends.

4PLY



EASY

RAE CARDIGAN

MEASUREMENTS

Months		0	3	6	12	24
Fits chest	cm	35	40	45	50	55
Garment measures (at chest)	cm	41	46	52	58	63
Length (approx)	cm	20	24	27	31	38
Sleeve length	cm	11	13	16	19	23

YARN REQUIRED

Lincraft Splendour	50g balls	2	2	2	3	4
--------------------	-----------	---	---	---	---	---

NEEDLES

A pair of 4.50mm knitting needles.
A 4.50mm circular knitting needle.
Wool needle for sewing up.

REQUIREMENTS

2 stitch holders.
5 (5-6-6-7) buttons.

TENSION

20 sts and 26 rows to 10cm over stocking st, using 4.50mm needles.

BACK AND FRONTS (worked in one piece to armholes)

Using 4.50mm circular needle, cast on 95 (105-119-129-141) sts.

Note: A circular needle is used to accommodate the large number of sts. Work backwards and forwards in rows, not rounds.

1st row: K2, * P1, K1, rep from * to last st, K1.

2nd row: K1, * P1, K1, rep from * to end. Last 2 rows form rib.

Work a further 4 (4-4-6-6) rows rib.

Next row: K23 (25-29-31-34), place marker, K49 (55-61-67-73), place marker, K23 (25-29-31-34).

Working in stocking st for rem, work 1 (3-1-3-3) row/s, beg with a purl row.

Beg A-line Shaping:

Dec one st each side of markers [i.e. dec 4 sts across the row] in next row, then every 4th (6th-8th-8th-10th) row until 79 (89-103-113-121) sts rem.

Cont without shaping until work measures 11 (14-16-18-24) cm from beg, ending with a purl row.

Shape Armholes:

1st row: Knit.

2nd row: P17 (19-23-25-27), cast off next 4 sts, P36 (42-48-54-58) sts, cast off next 4 sts, purl to end.

Leave sts on circular needle for yoke.

SLEEVES

Using a pair of 4.50mm needles, cast on 25 (27-29-31-33) sts.

Work 6 (6-6-8-8) rows rib.

Working in stocking st, inc one st at each end of 5th row, then every alt (alt-4th-4th-4th) row until there are 31 (31-33-35-37) sts, then every 4th (4th-6th-6th-6th) row until there are 35 (37-39-43-49) sts.

Cont without shaping until work measures 11 (13-16-19-23) cm (or length desired) from beg, ending with a purl row.

Shape Armholes:

Cast off 2 sts at beg of next 2 rows ... 31 (33-35-39-45) sts.

Leave sts on a stitch holder.

YOKE

With right side facing, return to body sts on circular needle and K17 (19-23-25-27) sts of Right Front, K31 (33-35-39-45) sts from first Sleeve stitch holder, K37 (43-49-55-59) sts of Back, K31 (33-35-39-45) sts from second Sleeve stitch holder, then K17 (19-23-25-27) sts of Left Front ... 133 (147-165-183-203) sts.

Work 1 (3-5-3-5) row/s.

Next row: K6 (5-12-10-6), * K2tog, K6 (6-5-5-5), rep from * to last 7 (6-13-12-8) sts, K2tog, K5 (4-11-10-6) ... 117 (129-144-159-175) sts.

Work 3 (3-3-5-5) rows.

Next row: K6 (5-12-10-6), * K2tog, K5 (5-4-4-4), rep from * to last 6 (5-12-11-7) sts, K2tog, K4 (3-10-9-5) ... 101 (111-123-135-147) sts.

Work 3 (3-3-5-5) rows.

Next row: K5 (4-11-9-5), * K2tog, K4

(4-3-3-3), rep from * to last 6 (5-12-11-7) sts, K2tog, K4 (3-10-9-5) ... 85 (93-102-111-119) sts.

Work 3 (3-3-5-5) rows.

Next row: K5 (4-11-9-5), * K2tog, K3 (3-2-2-2), rep from * to last 5 (4-11-10-6) sts, K2tog, K3 (2-9-8-4) ... 69 (75-81-87-91) sts.

Work 3 (3-3-5-5) rows.

Next row: K4 (3-10-8-4), * K2tog, K2 (2-1-1-1), rep from * to last 5 (4-11-10-6) sts, K2tog, K3 (2-9-8-4) ... 53 (57-60-63-63) sts.

Work 3 rows, **Size 6 months only:** dec one st in centre of last row ... 53 (57-59-63-63) sts.

Work 5 (5-5-7-7) rows rib.

Cast off loosely in rib.

RIGHT FRONT BAND FOR GIRL OR LEFT FRONT BAND FOR BOY

With right side facing and using a pair of 4.50mm needles, knit up 43 (47-57-67-79) sts along front edge, incl side edge of Neckband. Work 3 rows rib.

Next row: Rib 2, * rib 2tog, yrn, rib 7 (8-8-10-10), rep from * to last 5 sts, rib 2tog, yrn, rib 3 ... 5 (5-6-6-7) buttonholes.

Work 1 (1-1-3-3) row/s rib.

Cast off loosely in rib.

LEFT FRONT BAND FOR GIRL OR RIGHT FRONT BAND FOR BOY

Work to correspond with other front band, omitting buttonholes.

FINISHING

Join Sleeve and underarm seams. Sew on buttons. Sew in all ends.



RADA KIMONO JACKET

MEASUREMENTS

Months		0	3	6	12	24
Fits chest	cm	35	40	45	50	55
Garment measures	cm	43	48	53	58	63
Length (approx)	cm	22	26	29	33	40
Sleeve length	cm	11	13	16	19	23

YARN REQUIRED

Lincraft Cosy Wool 8ply	100g balls	2	3	3	4	5
OR Lincraft Superwash 8ply	100g balls	2	3	3	4	5
OR Lincraft DK 8ply	100g balls	2	2	3	3	4
OR Lincraft Supersoft 8ply	50g balls	4	5	6	7	9

NEEDLES

A pair of 4.00mm knitting needles.
A 4.00mm circular knitting needle (80cm long).
Wool needle for sewing up.

REQUIREMENTS

A stitch holder.
2 (2-2-3-3) buttons.
2 press studs.

TENSION

29 sts and 30 rows to 10cm over patt, using 4.00mm needles.

SPECIAL ABBREVIATION

LT = left twist – knit into back of second st on left-hand needle then slip purlwise the first st on left-hand needle, moving both sts to right-hand needle.

BACK

Using a pair of 4.00mm needles, cast on 65 (72-79-86-93) sts.

Beg Patt:

1st and alt rows (wrong side): K2, * P5, K2, rep from * to end.

2nd row: P2, * LT, K3, P2, rep from * to end.

4th row: P2, * K1, LT, K2, P2, rep from * to end.

6th row: P2, * K2, LT, K1, P2, rep from * to end.

8th row: P2, * K3, LT, P2, rep from * to end.
Last 8 rows form patt.

Work a further 59 (71-79-93-113) rows patt.

Shape Shoulders:

Cast off 5 (6-6-7-8) sts at beg of next 6 rows, then 4 (4-7-7-7) sts at beg of next 2 rows.

Leave rem 27 (28-29-30-31) sts on a stitch holder.

LEFT FRONT

Using a pair of 4.00mm needles, cast on 58 (65-72-79-86) sts.

Work 16 (20-24-28-38) rows patt.

Shape Front Edge:

Keeping patt correct, cast off 4 sts at beg of next row, then every alt row until 46 (53-60-67-74) sts rem, then 2 sts at beg of every alt row until 36 (43-46-55-64) sts rem.

Work 2 rows.

Dec one st at front edge in next row, then every alt row until 19 (22-25-28-31) sts rem.

Work 1 row.

Shape Shoulder:

Cast off 5 (6-6-7-8) sts at beg of next and

2 alt rows.

Work 1 row.

Cast off rem 4 (4-7-7-7) sts.

RIGHT FRONT

Using a pair of 4.00mm needles, cast on 58 (65-72-79-86) sts.

Work 17 (21-25-29-39) rows patt.

Shape Front Edge:

Keeping patt correct, cast off 4 sts at beg of next row, then every alt row until 46 (53-60-67-74) sts rem, then 2 sts at beg of every alt row until 36 (43-46-55-64) sts rem.

Dec one st at front edge in every alt row until 19 (22-25-28-31) sts rem.

Work 2 rows.

Shape Shoulder:

Cast off 5 (6-6-7-8) sts at beg of next and 2 alt rows.

Work 1 row.

Cast off rem 4 (4-7-7-7) sts.

SLEEVES

Using a pair of 4.00mm needles, cast on 37 (37-44-44-51) sts.

Work 9 rows patt.

Keeping patt correct as placed and working extra sts into patt, inc one st at each end of next row, then every (every-alt-alt-alt) row until there are 43 (43-56-62-55) sts, then every alt (alt-4th-4th-4th) row until there are 55 (61-66-72-77) sts.

Cont without shaping until work measures 11 (13-16-19-23) cm (or length desired) from beg, working last row on wrong side.

Cast off.

FRONT EDGING

Join shoulder seams. With right side facing and using 4.00mm circular needle, knit up 13 (16-19-22-30) sts along Right Front straight edge, knit up 48 (53-58-65-72) sts along Right Front shaped edge, work across sts from Back stitch holder as follows:

K2 (2-3-3-4), [K2tog, K1] 8 times, K1 (2-2-3-3), knit up 48 (53-58-65-72) sts along Left Front shaped edge, then knit up 13 (16-19-22-30) sts along Left Front straight edge ... 141 (158-175-196-227) sts.

Note: A circular needle is used to accommodate the large number of sts. Work backwards and forwards in rows not rounds. Knit 1 row.

2nd row: K2, [K2tog, yfwd, K5 (8-11-6-10)] 1 (1-1-2-2) time/s, K2tog, yfwd, knit to end ... 2 (2-2-3-3) buttonholes.

Knit 1 row.

Cast off.

FINISHING

Tie a marker 10 (11-12-13-14) cm down from beg of shoulder shaping on side edges of Back and Fronts to mark armholes. Placing centre of Sleeves to shoulder seams, sew in Sleeves evenly between markers. Join side and Sleeve seams. Sew buttons to left side seam. Sew press studs to Left Front straight edge and inside right side seam, placing one 2cm from lower edge and the other 2cm below where Front edge shaping starts. Sew in all ends.



— INTERMEDIATE —

GIRL
8PLY

MEASUREMENTS

Months		0	3	6	12	24
Fits chest	cm	35	40	45	50	55
Garment measures (at chest)	cm	41	46	52	58	63
Length (approx)	cm	30	34	38	48	52
Sleeve length	cm	11	13	16	19	23

YARN REQUIRED

ONE COLOUR DRESS WITH SLEEVES

Lincraft Baby Grand 4ply	100g balls	1	1	2	2	2
OR Lincraft Cotton 4ply or Lincraft Lullaby 4ply	50g balls	2	3	3	4	5

STRIPED DRESS WITH SLEEVES

Lincraft Baby Grand 4ply	100g balls					
1st Colour (C1)		1	1	1	1	1
2nd Colour (C2)		1	1	1	1	1
3rd Colour (C3)		1	1	1	1	1
4th Colour (C4)		1	1	1	1	1

OR Lincraft Cotton 50g balls

4ply or Lincraft Lullaby 4ply						
1st Colour (C1)		1	1	1	1	1
2nd Colour (C2)		1	2	2	2	2
3rd Colour (C3)		1	1	1	1	1
4th Colour (C4)		1	1	1	1	1

ONE COLOUR DRESS WITHOUT SLEEVES

Lincraft Baby Grand 4ply	100g balls	1	1	1	1	2
OR Lincraft Cotton 4ply or Lincraft Lullaby 4ply	50g balls	2	2	2	3	3

STRIPED DRESS WITHOUT SLEEVES

Lincraft Baby Grand 4ply	100g balls					
1st Colour (C1)		1	1	1	1	1
2nd Colour (C2)		1	1	1	1	1
3rd Colour (C3)		1	1	1	1	1
4th Colour (C4)		1	1	1	1	1

OR Lincraft Cotton 50g balls

4ply or Lincraft Lullaby 4ply						
1st Colour (C1)		1	1	1	1	1
2nd Colour (C2)		1	1	1	1	1
3rd Colour (C3)		1	1	1	1	1
4th Colour (C4)		1	1	1	1	1

NEEDLES

A pair of 3.25mm knitting needles.
Wool needle for sewing up.

REQUIREMENTS

2 stitch holders for Dress Without Sleeves.
4 stitch holders for Dress With Sleeves.

TENSION

28 sts and 36 rows to 10cm over stocking st, using 3.25mm needles.

STRIPE PATTERN

Using C1, work 2 rows stocking st.
Using C2, knit 1 row.
Using C3, work 2 rows stocking st, beg with a purl row.
Using C2, purl 1 row.
Using C4, work 2 rows stocking st.
Using C2, work 2 rows stocking st.
Last 10 rows form stripe patt.

STRIPED DRESS WITH SLEEVES

BACK AND FRONT (make 2)

Using 3.25mm needles and C2, cast on 67 (79-89-97-107) sts.

Beg Eyelet Patt:

1st row: Knit.
2nd row: Purl.
3rd row: Knit.
4th row: Knit.
5th row: K2, * yfwd, K2tog, rep from * to last st, K1.
6th row: Knit.

Last 6 rows form eyelet patt.

Work a further 12 (12-12-18-18) rows eyelet patt and inc 2 sts evenly across last row ... 69 (81-91-99-109) sts.

Beg Side Shaping:

Working in stripe patt, dec one st at each end of 3rd (7th-9th-5th-15th) row, then every 8th (8th-8th-10th-10th) row until 59 (67-75-83-91) sts rem.

Work 3 rows stripe patt, beg with a purl row, and dec 2 sts evenly across 3rd row ... 57 (65-73-81-89) sts.

Using C2, work 18 (18-18-24-24) rows eyelet patt.

Work 4 rows stripe patt (beg with C1) and inc 2 sts evenly across first row ... 59 (67-75-83-91) sts.

Shape Raglan Armholes:

Keeping stripe patt correct, cast off 2 sts at beg of next 2 rows ... 55 (63-71-79-87) sts.

3rd row: K1, sl 1, K1, pssso, knit to last 3 sts, K2tog, K1 ... 53 (61-69-77-85) sts.

Dec one st at each end (as in 3rd row) in foll 4th row ... 51 (59-67-75-83) sts.

Work 1 row.

Shape Neck:

Next row: K23 (27-30-34-38), turn.

Cont on these 23 (27-30-34-38) sts. ***

** Dec one st (as in 3rd row) at armhole edge in 2nd row, then every 4th row 3 (4-4-5-6) times, then every alt row 8 (8-9-10-11) times AT SAME TIME dec one st (as in 3rd row) at neck edge in every alt row 3 (7-10-11-12) times, then every 4th row 6 (5-4-5-6) times ... 2 sts.

Work 1 row.

K2tog and fasten off. **

Slip next 5 (5-7-7-7) sts onto a stitch holder.

With right side facing, join appropriate coloured yarn to rem 23 (27-30-34-38) sts and knit to end.

Rep from ** to **.

SLEEVES

Using 3.25mm needles and C2, cast on 33 (35-39-41-45) sts.

Work 17 (17-17-23-23) rows eyelet patt AT SAME TIME inc one st at each end of 9th row, then every 4th (4th-6th-6th-6th) row 2 (2-1-2-2) time/s ... 39 (41-43-47-51) sts.

Next row: Knit and inc 2 sts evenly across ... 41 (43-45-49-53) sts.

Working in stripe patt for rem, inc one st at each end of 3rd row, then every 4th (4th-6th-6th-6th) row until there are 47 (47-49-55-61) sts, then every 6th (6th-8th-8th-8th) row until there are 49 (53-55-61-69) sts.

Cont in stripe patt without shaping until work measures 11 (13-16-19-23) cm (or length desired) from beg, ending with a purl row.

Shape Raglan:

Keeping stripe patt correct, cast off 2 sts at beg of next 2 rows ... 45 (49-51-57-65) sts.

MACEY A-LINE DRESS

WITH OPTIONAL SLEEVES

AND OPTIONAL STRIPES

Dec one st at each end (as in 3rd row of Back and Front) of next row, then every alt row until 7 (7-7-7-9) sts rem.

Work 1 row.

Leave sts on a stitch holder.

NECK EDGING

Join raglan seams leaving left back raglan open and noting that tops of sleeves form part of neckline.

With right side facing, using 3.25mm needles and C2, beg at left back raglan seam and K2tog, K3 (3-3-3-5), K2tog across sts from left Sleeve stitch holder, knit up 23 (25-28-32-37) sts along left front neck, knit across sts from Front stitch holder, knit up 23 (25-28-32-37) sts along right front neck, K2tog, K3 (3-3-3-5), K2tog across sts from right Sleeve stitch holder, knit up 23 (25-28-32-37) sts along right back neck, knit across sts from Back stitch holder, then knit up 23 (25-28-32-37) sts along left back neck ... 112 (120-136-152-176) sts.

Knit 1 row.

Cast off.

FINISHING

Join left back raglan and Neck Edging seam. Join side and Sleeve seams. Sew in all ends.

ONE COLOUR DRESS WITH SLEEVES

Work as for Striped Dress With Sleeves but work in one colour only throughout.

STRIPED DRESS WITHOUT SLEEVES

BACK AND FRONT (make 2)

Work as for Striped Dress With Sleeves to ***.

**** Dec one st (as in 3rd row) at armhole edge in 2nd row, then every 4th row 3 (4-4-5-6) times, then every alt row 7 (7-8-9-10) times AT SAME TIME dec one st (as in 3rd row) at neck edge in every alt row 3 (7-10-11-12) times, then every 4th row 5 (4-3-4-5) times ... 4 sts.

Work 1 row.

Cast off. ****

Slip next 5 (5-7-7-7) sts onto a stitch holder.

With right side facing, join appropriate coloured yarn to rem 23 (27-30-34-38) sts and knit to end.

Rep from **** to ****.

NECK EDGING

Join right shoulder seam.

With right side facing, using 3.25mm needles and C2, knit up 22 (24-27-31-36) sts along left front neck, knit across sts from Front stitch holder, knit up 22 (24-27-31-36) sts along right front neck, knit up 22 (24-27-31-36) sts along right back neck, knit across sts from Back stitch holder, then knit up 22 (24-27-31-36) sts along left back neck ... 98 (106-122-138-158) sts.

Knit 1 row.

Cast off.

ARMHOLE EDGINGS

With right side facing, using 3.25mm needles and C2, knit up 63 (65-67-77-90) sts evenly around armhole edge.

Knit 1 row.

Cast off.

FINISHING

Join left shoulder and Neck Edging seam. Join side and Armhole Edging seams. Sew in all ends.

ONE COLOUR DRESS WITHOUT SLEEVES

Work as for Striped Dress Without Sleeves but work in one colour only throughout.



GIRL

4PLY

EASY

FERNANDO CARDIGAN

MEASUREMENTS

Months		0	3	6	12	24
Fits chest	cm	35	40	45	50	55
Garment measures	cm	41	46	52	58	63
Length (approx)	cm	22	26	29	33	40
Sleeve length	cm	11	13	16	19	23

YARN REQUIRED

Lincraft Baby Grand 4ply	100g balls					
Main Colour (MC)		1	1	2	2	2
1st Colour (C1)		1	1	1	1	1
2nd Colour (C2)		1	1	1	1	1
OR Lincraft Cotton 4ply or Lullaby 4ply	50g balls					
Main Colour (MC)		2	2	3	4	5
1st Colour (C1)		1	1	1	1	1
2nd Colour (C2)		1	1	1	1	1

NEEDLES

A pair of 3.25mm knitting needles.
A 3.25mm circular knitting needle.
Wool needle for sewing up.

REQUIREMENTS

5 stitch holders.
6 (7-8-8-9) buttons.

TENSION

28 sts and 36 rows to 10cm over stocking st, using 3.25mm needles.

BACK

Using a pair of 3.25mm needles and MC, cast on 59 (67-75-83-91) sts.
1st row: K2, * P1, K1, rep from * to last st, K1.
2nd row: K1, * P1, K1, rep from * to end.
Last 2 rows form rib.
Work a further 6 (6-8-8-8) rows rib.
Work in stocking st until work measures 11 (14-16-18-24) cm from beg, ending with a purl row.

Shape Armholes:

Cast off 2 sts at beg of next 2 rows ... 55 (63-71-79-87) sts.
Leave sts on a stitch holder.

LEFT FRONT

Using a pair of 3.25mm needles and MC, cast on 27 (31-33-37-41) sts.
Work 8 (8-10-10-10) rows rib.
Work in stocking st until work measures same as Back to beg of armhole shaping, ending with a purl row. **

Shape Armhole:

Cast off 2 sts at beg of next row ... 25 (29-31-35-39) sts.
Work 1 row.
Leave sts on a stitch holder.

RIGHT FRONT

Work as for Left Front to **.
Knit 1 row.

Shape Armhole:

Cast off 2 sts at beg of next row ... 25 (29-31-35-39) sts.
Leave sts on a stitch holder.

SLEEVES

Using a pair of 3.25mm needles and MC, cast on 35 (39-41-45-47) sts.
Work 8 (8-10-10-10) rows rib.
Working in stocking st for rem, inc one st at each end of 5th row, then every alt (**alt**-4th-**6th**-4th) row until there are 45 (43-49-53-51) sts, then every 4th (**4th**-6th-**8th**-6th) row until there are 49 (53-55-59-67) sts.
Cont without shaping until work measures 11 (13-16-19-23) cm (or length desired) from beg, ending with a purl row.

Shape Armholes:

Cast off 2 sts at beg of next 2 rows ... 45 (49-51-55-63) sts.
Leave sts on a stitch holder.

CIRCULAR YOKE

With right side facing, using 3.25mm circular needle and MC, knit across sts from Right Front stitch holder, first Sleeve stitch holder, Back stitch holder and inc one st in centre, second Sleeve stitch holder, then Left Front stitch holder ... 196 (220-236-260-292) sts.
Work 3 (7-9-17-21) rows stocking st, beg with a purl row.

Beg Fairisle Patt:

Using C1, knit 1 row.
2nd row: P3 C1, * P6 C2, P2 C1, rep from * to last st, P1 C1.
3rd row: K3 C1, * K6 C2, K2 C1, rep from * to last st, K1 C1.
Rep 2nd and 3rd rows once.
Using C1, purl 1 row.
7th row: Using MC, K1, * K2, K2tog, rep from * to last 3 sts, K3 ... 148 (166-178-196-220) sts.
Using MC, purl 1 row.
Using C2, work 2 rows stocking st.
Using MC, work 2 rows stocking st.
Using C1, knit 1 row.
14th row: P3 C1, * P4 C2, P2 C1, rep from * to last st, P1 C1.
15th row: K3 C1, * K4 C2, K2 C1, rep from * to last st, K1 C1.
Rep 14th and 15th rows once.
Using C1, purl 1 row.
19th row: Using MC, K1, * K1, K2tog, rep from * to last 3 sts, K3 ... 100 (112-120-132-148) sts.
Using MC, purl 1 row.
Using C2, work 2 rows stocking st.
Using MC, work 2 rows stocking st.
Using C1, knit 1 row.
26th row: P3 C1, * P2 C2, P2 C1, rep from * to last st, P1 C1.
27th row: K3 C1, * K2 C2, K2 C1, rep from * to last st, K1 C1.
Rep 26th and 27th rows once.
Using C1, purl 1 row.
31st row: Using MC for rem, K1, * K2tog, rep from * to last st, K1 ... 51 (57-61-67-75) sts.
Work 3 rows stocking st, beg with a purl row, and dec 2 sts evenly across last row ... 49 (55-59-65-73) sts.
Work 8 (8-10-10-10) rows rib.
Cast off in rib.

RIGHT FRONT BAND FOR GIRL OR LEFT FRONT BAND FOR BOY

With right side facing, using a pair of 3.25mm needles and MC, knit up 67 (79-91-105-119) sts along front edge, incl side edge of Neckband.
Work 3 (3-5-5-5) rows rib.
Next row: Rib 2, * rib 2tog, yrn, rib 10 (10-10-12-12), rep from * to last 5 sts, rib 2tog, yrn, rib 3 ... 6 (7-8-8-9) buttonholes.
Work 3 rows rib.
Cast off in rib.

LEFT FRONT BAND FOR GIRL OR RIGHT FRONT BAND FOR BOY

Work to correspond with other front band, omitting buttonholes.

FINISHING

Join side, Sleeve and underarm seams. Sew on buttons.
Sew in all ends.



UNISEX

4PLY

— INTERMEDIATE —

WRAPPED CAR SEAT BLANKET

MEASUREMENTS

Width (aprox at widest point)	cm	129
Length (approx at widest point)	cm	129

YARN REQUIRED

Lincraft Cosy Wool 8ply	100g balls	10
OR Lincraft Superwash 8ply	100g balls	9
OR Lincraft DK 8ply	100g balls	7
OR Lincraft Supersoft 8ply	50g balls	18

NEEDLES

A pair of 4.00mm knitting needles.
A 4.00mm circular knitting needle (80cm long).
Wool needle for sewing in ends.

REQUIREMENTS

2 stitch holders.

TENSION

38 sts and 30 rows to 10cm over rib, using 4.00mm needles.

CAR SEAT BLANKET

Using a pair of 4.00mm needles, cast on 20 sts.

1st row: P4, * K4, P4, rep from * to end.

2nd row: K4, * P4, K4, rep from * to end.

Last 2 rows form rib.

Keeping rib correct as placed, cast on 4 sts at beg of every row until there are 52 sts, then 2 sts until there are 68 sts.

Note: When sts no longer fit comfortably on a pair of needles, change to a circular needle but cont to work backwards and forwards in rows, not rounds.

Inc one st at each end of next row, then every alt row until there are 148 sts, then every 4th row until there are 164 sts.

Work 1 row.

Cast on 8 sts at beg of every row until there are 260 sts.

Beg Buckle Opening:

Next row: Cast on 8 sts, rib 119, cast off next 38 sts, rib to end. Cont on last 111 sts.

Cast on 8 sts at beg of next and alt row, then 6 sts at beg of foll alt row ... 133 sts.

Break off yarn and leave these 133 sts on needle.

With wrong side facing, join yarn to rem 119 sts.

Cast on 8 sts at beg of 2nd row, then 6 sts at beg of foll alt row ... 133 sts.

Work 1 row.

Next row: Cast on 6 sts, rib 139, turn, cast on 38 sts, turn, rib rem 133 sts ... 310 sts.

Cast on 6 sts at beg of every row until there are 364 sts, then 4 sts until there are 380 sts.

Beg Strap Openings:

Next row: Cast on 4 sts, rib 166, turn.

Cont on these 166 sts.

Cast on 4 sts at beg of every alt row until there are 214 sts. Work 1 row.

Inc one st at beg of next row, then every alt row until there are 218 sts. Work 1 row.

Dec one st at beg of next row, then every alt row until 214 sts rem.

Cast off 4 sts at beg of every alt row until 154 sts rem, then 6 sts until 118 sts rem, then 8 sts until 62 sts rem.

Break off yarn and leave these 62 sts on a stitch holder.

With right side facing, join yarn to rem 218 sts.

Next row: Rib 56, turn.

Cont on these 56 sts.

Work 96 rows rib.

Break off yarn and leave these 56 sts on a stitch holder.

With right side facing, join yarn to rem 162 sts and rib to end.

Cast on 4 sts at beg of next row, then every alt row until there are 214 sts.

Inc one st at end of next row, then every alt row until there are 218 sts.

Work 1 row.

Dec one st at end of next row, then every alt row until 214 sts rem.

Work 2 rows.

Cast off 4 sts at beg of next row, then every alt row until 154 sts rem, then 6 sts until 118 sts rem, then 8 sts until 70 sts rem.

Work 1 row.

Next row: Cast off 8 sts, rib to end, with wrong side facing rib across sts from centre stitch holder, then sts from other stitch holder ... 180 sts.

Cast off 8 sts at beg of next 2 rows ... 164 sts.

Dec one st at each end of next row, then every 4th row until 146 sts rem, then every alt row until 68 sts rem.

Work 1 row.

Cast off 2 sts at beg of every row until 52 sts rem, then 4 sts until 20 sts rem.

Work 2 rows.

Cast off in rib.

FINISHING

Sew in all ends.

To use the Car Seat Blanket place it within the car seat and pull the straps and buckle through the Blanket openings.

Strap baby in as normal then fold up the bottom and both sides of the Blanket to keep baby snug.





8PLY

MEASUREMENTS

Months		0	3	6	12	24
Fits chest	cm	35	40	45	50	55
Garment measures	cm	38	46	52	58	63
Length	cm	22	26	29	33	40
Sleeve length (approx)	cm	11	13	16	19	23

YARN REQUIRED

Lincraft Baby Grand 4ply	100g balls	1	1	1	2	2
OR Lincraft Cotton 4ply	50g balls	2	2	3	3	4
OR Lincraft Lullaby 4ply	50g balls	2	2	3	3	4

NEEDLES

A pair of 3.25mm knitting needles.
Wool needle for sewing up.

REQUIREMENTS

A stitch holder.
5 (6-6-7-8) buttons.

TENSION

32 sts and 36 rows to 10cm over patt, using 3.25mm needles.

BABETTE CARDIGAN



GIRL

4PLY

INTERMEDIATE

BACK

Using 3.25mm needles, cast on 63 (73-83-93-103) sts.

1st row: K2, * P1, K1, rep from * to last st, K1.

2nd row: K1, * P1, K1, rep from * to end.

Last 2 rows form rib.

Work a further 6 (6-6-8-8) rows rib.

Beg Patt:

1st row: P1, K1, P1, * K7, P1, K1, P1, rep from * to end.

2nd and alt rows: K1, P1, K1, * P7, K1, P1, K1, rep from * to end.

3rd row: As 1st row.

5th row: P1, K1, P1, * K3, yfwd, K2tog, K2, P1, K1, P1, rep from * to end.

7th row: P1, K1, P1, * K2, yfwd, K2tog, yfwd, K2tog, [K1, P1] twice, rep from * to end.

8th row: As 2nd row.

Last 8 rows form patt for Back.

Cont in patt until work measures 12 (15-17-20-26) cm from beg, working last row on wrong side.

Shape Armholes:

Keeping patt correct, cast off 2 (3-4-5-6) sts at beg of next 2 rows ... 59 (67-75-83-91) sts. Dec one st at each end of next row, then every alt row until 55 (63-69-75-81) sts rem.

Cont in patt without shaping until work measures 22 (26-29-33-40) cm from beg, working last row on wrong side.

Shape Shoulders:

Cast off 4 (5-6-7-8) sts at beg of next 4 rows, then 5 (6-6-7-7) sts at beg of next 2 rows.

Leave rem 29 (31-33-33-35) sts on a stitch holder.

LEFT FRONT

Using 3.25mm needles, cast on 33 (33-43-43-47) sts.

Work 8 (8-8-10-10) rows rib.

Beg Patt:

1st row: P1, K1, P1, * K7, P1, K1, P1, rep from * to last 0 (0-0-0-4) sts, [K1, P1] 0 (0-0-0-2) times.

2nd and alt rows: [K1, P1] 1 (1-1-1-3) time/s, K1, * P7, K1, P1, K1, rep from * to end.

3rd row: As 1st row.

5th row: P1, K1, P1, * K3, yfwd, K2tog, K2, P1, K1, P1, rep from * to last 0 (0-0-0-4) sts, [K1, P1] 0 (0-0-0-2) times.

7th row: P1, K1, P1, * K2, yfwd, K2tog, yfwd, K2tog, [K1, P1] twice, rep from * to last 0 (0-0-0-4) sts, [K1, P1] 0 (0-0-0-2) times.

8th row: As 2nd row.

Last 8 rows form patt for Left Front.

Cont in patt until work measures same as Back to beg of armhole shaping, working last row on wrong side.

Shape Armhole:

Keeping patt correct, cast off 2 (3-4-5-6) sts at beg of next row ... 31 (30-39-38-41) sts.

Dec one st at armhole edge in every alt row until 29 (28-36-34-36) sts rem.

Cont in patt without shaping until there are 13 (13-13-15-17) rows less than Back to beg of shoulder shaping, working last row on right side.

Shape Neck:

Cast off 7 (7-8-8-8) sts at beg of next row ... 22 (21-28-26-28) sts.

Dec one st at neck edge in next row, then every (alt-every-alt-alt) row until 15 (17-19-23-26) sts rem, then every alt (4th-alt-4th-4th) row until 13 (16-18-21-23) sts rem.

Work 1 row.

Shape Shoulder:

Cast off 4 (5-6-7-8) sts at beg of next and alt row.

Work 1 row.

Cast off rem 5 (6-6-7-7) sts.

RIGHT FRONT

Using 3.25mm needles, cast on 33 (33-43-43-47) sts.

Work 8 (8-8-10-10) rows rib.

Beg Patt:

1st row: [P1, K1] 1 (1-1-1-3) time/s, P1, * K7, P1, K1, P1, rep from * to end.

2nd and alt rows: K1, P1, K1, * P7, K1, P1, K1, rep from * to last 0 (0-0-0-4) sts, [P1, K1] 0 (0-0-0-2) times.

3rd row: As 1st row.

5th row: [P1, K1] 1 (1-1-1-3) time/s, P1, * K3, yfwd, K2tog, K2, P1, K1, P1, rep from * to end.

7th row: [P1, K1] 1 (1-1-1-3) time/s, P1, * K2, yfwd, K2tog, yfwd, K2tog, [K1, P1] twice, rep from * to end.

8th row: As 2nd row.

Last 8 rows form patt for Right Front.

Cont in patt until work measures same as Back to beg of armhole shaping, working last row on wrong side.

Work 1 row.

Shape Armhole:

Keeping patt correct, cast off

2 (3-4-5-6) sts at beg of next row ... 31 (30-39-38-41) sts.

Dec one st at armhole edge in next row, then every alt row until 29 (28-36-34-36) sts rem.

Cont in patt without shaping until there are 14 (14-14-16-18) rows less than Back to beg of shoulder shaping, working last row on wrong side.

Shape Neck:

Cast off 7 (7-8-8-8) sts at beg of next row ... 22 (21-28-26-28) sts.

Work 1 row.

Dec one st at neck edge in next row, then every (alt-every-alt-alt) row until 15 (17-19-23-26) sts rem, then every alt (4th-alt-4th-4th) row until 13 (16-18-21-23) sts rem.

Work 2 rows.

Shape Shoulder:

Cast off 4 (5-6-7-8) sts at beg of next and alt row.

Work 1 row.

Cast off rem 5 (6-6-7-7) sts.

SLEEVES

Using 3.25mm needles, cast on 41 (45-47-51-53) sts.

Work 8 (8-8-10-10) rows rib.

Beg Patt:

1st row: K4 (1-2-4-0), P1, K1, P1, * K7, P1, K1, P1, rep from * to last 4 (1-2-4-0) st/s, K4 (1-2-4-0).

2nd row: P4 (1-2-4-0), K1, P1, K1, * P7, K1, P1, K1, rep from * to last 4 (1-2-4-0) st/s, P4 (1-2-4-0).

3rd row: Inc in first st, K3 (0-1-3-0), P1 (1-1-1-0), K1, P1, * K7, P1, K1, P1, rep from * to last 14 (11-12-14-10) sts, K7, P1, K1, P1 (1-1-1-0), K3 (0-1-3-0), inc in last st ... 43 (47-49-53-55) sts.

4th row: P5 (2-3-5-1), K1, P1, K1, * P7, K1, P1, K1, rep from * to last 5 (2-3-5-1) st/s, P5 (2-3-5-1).

5th row: [Inc in first st] 1 (0-0-0-0) time/s, K4 (2-3-5-1), P1, K1, P1, * K3, yfwd, K2tog, K2, P1, K1, P1, rep from * to last 5 (2-3-5-1) st/s, K4 (2-3-5-1), [inc in last st] 1 (0-0-0-0) time/s ... 45 (47-49-53-55) sts.

6th row: P6 (2-3-5-1), K1, P1, K1, * P7, K1, P1, K1, rep from * to last 6 (2-3-5-1) st/s, P6 (2-3-5-1).

7th row: Inc in first st, K5 (1-2-4-0), P1, K1, P1, * K2, yfwd, K2tog, yfwd, K2tog, [K1, P1] twice, rep from * to last 6 (2-3-5-1) st/s, K5 (1-2-4-0), inc in last st ... 47 (49-51-55-57) sts.

8th row: P7 (3-4-6-2), K1, P1, K1, * P7, K1, P1, K1, rep from

* to last 7 (3-4-6-2) sts, P7 (3-4-6-2).

Keeping patt correct as placed and working extra sts into patt, inc one st at each end of next (3rd-3rd-3rd-3rd) row, then every alt (4th-4th-4th-4th) row until there are 53 (57-57-59-71) sts, then every 4th (6th-6th-6th-6th) row until there are 57 (59-63-69-79) sts.

Cont in patt without shaping until work measures approx 11 (13-16-19-23) cm (or length desired) from beg, ending with same patt row as Back to beg of armhole shaping.

Shape Top:

Keeping patt correct, cast off 2 (2-2-3-3) sts at beg of next 2 rows ... 53 (55-59-63-73) sts.

Dec one st at each end of next row, then every alt row until 43 (43-43-51-63) sts rem, then every row until 9 sts rem. Cast off.

NECKBAND

Join shoulder seams.

With right side facing and using 3.25mm needles, knit up 15 (15-17-18-20) sts along Right Front neck shaping, knit or purl sts across Back stitch holder as they appear, then knit up 15 (15-17-18-20) sts along Left Front neck shaping ... 59 (61-67-69-75) sts.

Work 7 (7-7-9-9) rows rib, beg with a 2nd row. Cast off in rib.

RIGHT FRONT BAND

With right side facing and using 3.25mm needles, knit up 55 (67-71-85-105) sts along Right Front edge, incl side edge of Neckband.

Work 3 (3-3-5-5) rows rib, beg with a 2nd row.

Next row: Rib 3 (3-2-3-3), * yrn, rib 2tog, rib 10 (10-11-11-12), rep from * to last 4 sts, yrn, rib 2tog, rib 2 ... 5 (6-6-7-8) buttonholes.

Work 3 rows rib.

Cast off in rib.

LEFT FRONT BAND

Work to correspond with Right Front Band, omitting buttonholes.

FINISHING

Sew in Sleeves. Join side and Sleeve seams. Sew on buttons. Sew in all ends.

HOMBRE BIB

MEASUREMENTS

Width (approx, at widest point)	cm	20
Length (approx, including straps)	cm	20

YARN REQUIRED

Lincraft Baby Grand 4ply	100g balls	1
OR Lincraft Cotton 4ply	50g balls	1
OR Lincraft Lullaby 4ply	50g balls	1

NEEDLES

A pair of 3.25mm knitting needles.
Wool needle for sewing in ends.

REQUIREMENTS

A press stud or 2cm of Velcro.

TENSION

28 sts and 36 rows to 10cm over stocking st, using 3.25mm needles.

DRIBBLE BIB

Using 3.25mm needles, cast on 4 sts.

Knit 2 rows garter st.

3rd row: K1, M1, K2, M1, K1 ... 6 sts.

4th row: Knit.

5th row: [K2, M1] twice, K2 ... 8 sts.

6th row: K3, P2, K3.

7th row: K3, M1, K2, M1, K3 ... 10 sts.

8th row: K3, P4, K3.

9th row: K3, M1, K4, M1, K3 ... 12 sts.

10th row: K3, P6, K3.

11th row: K3, M1, knit to last 3 sts, M1, K3.

12th row: K3, M1 purlways, purl to last 3 sts, M1 purlways, K3.

Rep 11th and 12th rows until there are 56 sts.

Next row: K3, M1, K15, cast off next 20 sts, knit to last 3 sts, M1, K3 ... 38 sts.

Right Strap:

Cont on last 19 sts for Right Strap.

1st row: K3, purl to last 3 sts, K3.

2nd row: K3, sl 1, K2tog, psso, knit to last 3 sts, M1, K3 ... 18 sts.
Rep 1st and 2nd rows 3 times ... 15 sts.

9th row: K3, purl to last 3 sts, K3.

10th row: K3, sl 1, K1, psso, knit to end ... 14 sts.

Rep 9th and 10th rows 4 times ... 10 sts.

19th row: K3, P4, K3.

20th row: Knit.

Rep 19th and 20th rows 8 times, then 19th row once.
Cast off.

Left Strap:

With wrong side facing, join yarn to rem 19 sts.

1st row: K3, purl to last 3 sts, K3.

2nd row: K3, M1, knit to last 6 sts, K3tog, K3 ... 18 sts.
Rep 1st and 2nd rows 3 times ... 15 sts.

9th row: K3, purl to last 3 sts, K3.

10th row: Knit to last 5 sts, K2tog, K3 ... 14 sts.

Rep 9th and 10th rows 4 times ... 10 sts.

19th row: K3, P4, K3.

20th row: Knit.

Rep 19th and 20th rows 8 times, then 19th row once.
Cast off.

FINISHING

Sew press stud or Velcro in position at end of Straps. Sew in all ends.



UNISEX

4PLY

EASY

CALEY BIB AND WASHCLOTH SET



UNISEX

4PLY

EASY

MEASUREMENTS

BIB

Width (approx)	cm	16
Length (approx, excluding strap)	cm	18

WASHCLOTH

Width (approx)	cm	25
Length (approx)	cm	25

YARN REQUIRED

Lincraft Baby Grand 4ply	100g balls	1
OR Lincraft Cotton 4ply	50g balls	1
OR Lincraft Lullaby 4ply	50g balls	1

NEEDLES

A pair of 3.25mm knitting needles.
Wool needle for sewing up.

REQUIREMENTS

A button for Bib.

TENSION

28 sts and 36 rows to 10cm over stocking st, using 3.25mm needles.

NOTE

Use one of the eyelets in the strap as a buttonhole to fasten the Bib.

BIB

Using 3.25mm needles, cast on 36 sts.
Work in stocking st until Bib measures 14cm from beg, ending with a purl row.
Cast off.

LACE EDGING (worked sideways)

Using 3.25mm needles, cast on 4 sts.
1st row: K1, yfwd, K1, yfwd, K2 ... 6 sts.
2nd row: Knit.
3rd row: K2, yfwd, K2tog, yfwd, K2 ... 7 sts.
4th row: Knit.
5th row: K3, yfwd, K2tog, yfwd, K2 ... 8 sts.
6th row: Cast off 4 sts, knit to end ... 4 sts.
Last 6 rows form patt.

Cont in patt until Lace Edging is length required to fit around all four sides of Bib, working last row on wrong side.
Tie a coloured thread at end of last row.
Cont in patt for approx a further 25cm, ending with a 6th row.
Cast off.

FINISHING

Placing cast on edge of Lace Edging at the end of the Bib cast off row, sew straight edge of Lace Edging in position up to coloured thread, leaving rem of Lace Edging free for strap.
Sew 4 cast on sts of Lace Edging to side edge of strap. Sew on button. Sew in all ends.

WASHCLOTH

Using 3.25mm needles, cast on 61 sts.
Work in stocking st until work measures 21cm from beg, ending with a purl row.
Cast off.

LACE EDGING

Work Lace Edging as for Bib until length required to fit around all four sides of Washcloth, ending with a 6th row.
Cast off.

FINISHING

Sew Lace Edging in position. Join cast on and cast off edges of Lace Edging. Sew in all ends.

EASTON BEANIE

MEASUREMENTS

Months		0	3	6	12	24
To fit head	cm	35	40	45	48	51

YARN REQUIRED

Lincraft Baby Grand 4ply	100g balls	Scraps of yarn in:
		1st Colour (C1)
OR Lincraft Cotton	50g balls	2nd Colour (C2)
4ply or Lullaby 4ply		3rd Colour (C3)
		4th Colour (C4)

NEEDLES

A pair of 3.25mm knitting needles.
Wool needle for sewing up.

TENSION

28 sts and 36 rows to 10cm over stocking st, using 3.25mm needles.

NOTE

This Beanie is great for using up scraps of yarn. Our Beanie is worked in four colours, in four row stripes, but you can use any number of colours, in any stripe pattern you like.

BEANIE

Using 3.25mm needles and C4, cast on 81 (**91-103-109-117**) sts.

1st row: K2, * P1, K1, rep from * to last st, K1.

2nd row: K1, * P1, K1, rep from * to end.

Last 2 rows form rib.

Work a further 6 (**6-6-8-8**) rows rib.

Beg Stripe Patt:

Work 4 rows stocking st in each of C1, C2, C3 and C4.

Last 16 rows form stripe patt.

Cont in stripe patt until Beanie measures 8 (**9-9-10-11**) cm from beg, ending with a purl row and dec 0 (**1-4-1-0**) st/s evenly across last row ... 81 (**90-99-108-117**) sts.

Shape Crown:

1st row: Keeping stripe patt correct, * K2tog, K7, rep from * to end ... 72 (**80-88-96-104**) sts.

Work 1 (**3-3-3-3**) row/s.

Next row: * K2tog, K6, rep from * to end.

Work 1 (**1-1-3-3**) row/s.

Next row: * K2tog, K5, rep from * to end.

Work 1 (**1-1-1-3**) row/s.

Next row: * K2tog, K4, rep from * to end.

Work 1 row.

Next row: * K2tog, K3, rep from * to end.

Work 1 row.

Next row: * K2tog, K2, rep from * to end.

Work 1 row.

Next row: * K2tog, K1, rep from * to end.

Work 1 row.

Next row: * K2tog, rep from * to end.

Next row: P1 (**0-1-0-1**), * P2tog, rep from * to end ... 5 (**5-6-6-7**) sts.

Break off yarn, run end through rem sts, draw up tightly and fasten off securely.

FINISHING

Join back seam. Sew in all ends.



UNISEX

4PLY

EASY

EDDIE BEANIE



MEASUREMENTS

Months		0	3	6	12	24
To fit head	cm	35	40	45	48	51

YARN REQUIRED

Lincraft Cosy Wool 8ply, Superwash 8ply or DK 8ply	100g balls	Scraps of yarn in: 1st Colour (C1) 2nd Colour (C2) 3rd Colour (C3)
OR Lincraft Supersoft 8ply	50g balls	4th Colour (C4) 5th Colour (C5)

NEEDLES

A pair of 4.00mm knitting needles.
Wool needle for sewing up.

TENSION

22 sts and 30 rows to 10cm over stocking st, using 4.00mm needles.

NOTE

This Beanie is great for using up scraps of yarn. Our Beanie is worked in five colours, in two row stripes, but you can use any number of colours, in any stripe pattern you like.

BEANIE

Using 4.00mm needles and C5, cast on 63 (73-81-87-91) sts.

1st row: K2, * P1, K1, rep from * to last st, K1.

2nd row: K1, * P1, K1, rep from * to end.

Last 2 rows form rib.

Work a further 4 (4-6-8-8) rows rib.

Beg Stripe Patt:

Work 2 rows stocking st in each of C1, C2, C3, C4 and C5.

Last 10 rows form stripe patt.

Cont in stripe patt until Beanie measures 8 (9-9-10-12) cm from beg, ending with a purl row and dec 0 (1-0-6-1) st/s evenly across last row ... 63 (72-81-81-90) sts.

Shape Crown:

1st row: Keeping stripe patt correct, * K2tog, K7, rep from * to end ... 56 (64-72-72-80) sts.

2nd and alt rows: Purl.

3rd row: * K2tog, K6, rep from * to end.

5th row: * K2tog, K5, rep from * to end.

7th row: * K2tog, K4, rep from * to end.

9th row: * K2tog, K3, rep from * to end.

11th row: * K2tog, K2, rep from * to end.

13th row: * K2tog, K1, rep from * to end.

15th row: * K2tog, rep from * to end.

16th row: P1 (0-1-1-0), * P2tog, rep from * to end ... 4 (4-5-5-5) sts.

Break off yarn, run end through rem sts, draw up tightly and fasten off securely.

FINISHING

Join back seam. Sew in all ends.

UNISEX

8PLY

EASY

JAMIE CARDIGAN OR JUMPER WITH STRIPE OPTIONS

MEASUREMENTS

Months		0	3	6	12	24
Fits chest	cm	35	40	45	50	55
Garment measures	cm	41	46	52	58	63
Length (approx)	cm	22	26	29	33	40
Sleeve length	cm	11	13	16	19	23

YARN REQUIRED

JUMPER OR CARDIGAN

Lincraft Baby Grand 4ply	100g balls					
1st Colour (C1)		1	1	1	1	1
2nd Colour (C2)		1	1	1	1	1
3rd Colour (C3)		1	1	1	1	1
4th Colour (C4)		1	1	1	1	1
OR Lincraft Cotton 4ply	50g balls					
or Lullaby 4ply						
1st Colour (C1)		1	1	1	1	2
2nd Colour (C2)		1	1	1	1	2
3rd Colour (C3)		1	1	1	1	2
4th Colour (C4)		1	1	1	1	2

NEEDLES

A pair of 3.25mm knitting needles.
Wool needle for sewing up.

REQUIREMENTS

4 stitch holders for Jumper.
3 stitch holders for Cardigan.
4 buttons for Jumper.
5 (5-6-7-7) buttons for Cardigan.

TENSION

28 sts and 36 rows to 10cm over stocking st, using 3.25mm needles.

NOTE 1:

For this pattern the Sleeves are worked prior to the Body. This is to ensure the stripe pattern matches at the armholes.

NOTE 2:

Two stripe patterns are listed below. Our Jumper is worked in stripe pattern 1 and the Cardigan in stripe pattern 2. You may work either garment in either stripe pattern.

STRIPE PATTERN 1:

Using C1, work 4 rows stocking st.
Using C2, work 2 rows stocking st.
Using C3, work 4 rows stocking st.
Using C4, work 2 rows stocking st.
Last 12 rows form stripe pattern 1.

STRIPE PATTERN 2:

Using C1, work 4 rows stocking st.
Using C2, work 3 rows stocking st.
Using C3, purl 1 row.
Using C4, work 4 rows stocking st.
Using C1, work 4 rows stocking st.
Using C3, work 3 rows stocking st.
Using C2, purl 1 row.
Using C4, work 4 rows stocking st.
Last 24 rows form stripe pattern 2.



EASY

JUMPER SLEEVES

Using 3.25mm needles and C4, cast on 38 (38-42-46-46) sts.

1st row: K2, * P2, K2, rep from * to end.

2nd row: P2, * K2, P2, rep from * to end.

Last 2 rows form 2x2 rib. Work a further 6 (6-6-8-8) rows 2x2 rib.

Working in stripe patt, inc one st at each end of 5th row, then every alt (alt-4th-6th-4th) row until there are 44 (42-48-56-60) sts, then every 4th (4th-6th-8th-6th) row until there are 50 (52-56-60-70) sts.

Cont in stripe patt without shaping until work measures 11 (13-16-19-23) cm (or length desired) from beg, ending with a purl row.

Shape Raglan:

Keeping stripe patt correct, cast off 2 sts at beg of next 2 rows ... 46 (48-52-56-66) sts.

Sizes 3, 6 and 12 Months

Only:

Dec one st at each end of next row, then every 4th row until (42-48-48) sts rem.

Work 1 row.

All Sizes:

Dec one st at each end of next row, then every alt row until 10 sts rem.

Work 1 row.

Leave sts on a stitch holder.

BACK

Using 3.25mm needles and C4, cast on 58 (66-74-82-90) sts.

Work 8 (8-8-10-10) rows 2x2 rib.

Work in stripe patt until work measures approx 11 (14-16-18-24) cm from beg, ending with same stripe row as Sleeves to beg of raglan shaping.

Shape Raglan Armholes:

Keeping stripe patt correct, cast off 2 sts at beg of next 2 rows ... 54 (62-70-78-86) sts. **

Dec one st at each end of next row, then every 4th row until 44 (52-64-70-82) sts rem, then every alt row until 26 (28-30-32-32) sts rem.

Work 1 row.

Leave sts on a stitch holder.

FRONT

Work as for Back to **.

Dec one st at each end of next row, then every 4th row until 44 (52-64-70-82) sts rem, then every alt row until 42 (46-48-52-58) sts rem.

Work 1 row.

Shape Neck:

Next row: K2tog, K13 (14-15-16-19), turn.

Cont on these 14 (15-16-17-20) sts.

Dec one st at armhole edge in every alt row 7 (8-8-9-12) times, AT SAME TIME dec one st at neck edge in every alt row 3 (2-4-3-2) times, then every 4th row 2 (3-2-3-4) times ... 2 sts.

Work 1 row.

K2tog and fasten off.

Slip next 12 (14-14-16-16) sts onto a stitch holder.

With right side facing, join appropriate coloured yarn to rem sts, knit to last 2 sts, K2tog.

Dec one st at armhole edge in every alt row 7 (8-8-9-12) times, AT SAME TIME dec one st at neck edge in every alt row 3 (2-4-3-2) times, then every 4th row 2 (3-2-3-4) times ... 2 sts.

Work 1 row.

K2tog and fasten off.

NECKBAND

Join Back and right Front raglan seams, noting that tops of Sleeves form part of neckline.

With right side facing, using 3.25mm needles and C4, knit up 12 (12-13-15-19) sts along left Front neck, knit across sts from Front stitch holder, knit up 12 (12-13-15-19) sts along right Front neck, [K2tog, K6, K2tog] across right Sleeve stitch holder, [K2tog, K22 (24-26-28-28), K2tog] across Back stitch holder, then [K2tog, K6, K2tog] across left Sleeve stitch holder ... 76 (80-84-92-100) sts.

1st row: P3, * K2, P2, rep from * to last st, P1.

2nd row: K3, * P2, K2, rep from * to last st, K1.

Last 2 rows form 2x2 rib for Neckband.

Work a further 5 (5-5-7-7) rows 2x2 rib.

Cast off in 2x2 rib.

BUTTONHOLE BAND

Join left Front raglan seam for 2cm from beg of armholes.

With right side facing, using 3.25mm needles and C4, knit up 31 (34-36-45-48) sts along left Front raglan edge and side edge of Neckband.

1st row: K2, yfwd, K2tog, [K5 (6-6-9-10), yfwd, K2tog] 3 times, K6 (6-8-8-8) ... 4 buttonholes.

Cast off.

BUTTON BAND

With right side facing, using 3.25mm needles and C4, knit up 31 (34-36-45-48) sts along left front Sleeve raglan edge and side edge of Neckband.

Knit 1 row.

Cast off.

FINISHING

Join side and Sleeve seams.

Sew on buttons. Sew in all ends.

CARDIGAN SLEEVES

Work as for Jumper Sleeves.

BACK

Work as for Jumper Back.

LEFT FRONT

Using 3.25mm needles and C4, cast on 27 (31-35-39-43) sts.

1st row: * K2, P2, rep from * to last 3 sts, K3.

2nd row: P3, * K2, P2, rep from * to end.

Last 2 rows form 2x2 rib for Left Front.

Work a further 6 (6-6-8-8) rows 2x2 rib.

Work in stripe patt until work measures same as Back to beg of raglan shaping, ending with same stripe row.

Shape Raglan Armhole:

Keeping stripe patt correct, cast off 2 sts at beg of next row ... 25 (29-33-37-41) sts.

Dec one st at armhole edge in 2nd row, then every 4th row until 20 (24-30-33-39) sts rem, then every alt row until 17 (18-19-21-22) sts rem.

Shape Neck:

Cast off 6 (7-7-8-8) sts at beg of next row ... 11 (11-12-13-14) sts.

Dec one st at armhole edge in next row, then every alt row 5 (5-5-6-7) times, AT SAME TIME dec one st at neck edge in next row, then every 4th (4th-alt-alt-4th) row 1 (1-1-1-2) time/s, then every 6th (6th-4th-4th-6th) row 1 (1-2-2-1) time/s ... 2 sts.

Work 1 row.

K2tog and fasten off.

RIGHT FRONT

Using 3.25mm needles and C4, cast on 27 (31-35-39-43) sts.

1st row: K3, * P2, K2, rep from * to end.

2nd row: * P2, K2, rep from * to last 3 sts, P3.

Last 2 rows form 2x2 rib for Right Front.

Work a further 6 (6-6-8-8) rows 2x2 rib.

Work in stripe patt until work measures same as Back to beg of raglan shaping, ending with same stripe row.

Work 1 row.

Shape Raglan Armhole:

Keeping stripe patt correct, cast off 2 sts at beg of next row ... 25 (29-33-37-41) sts.

Dec one st at armhole edge in next row, then every 4th row until 20 (24-30-33-39) sts rem, then every alt row until 18 (19-20-22-

23) sts rem.

Work 1 row.

Shape Neck:

Next row: Cast off 6 (7-7-8-8) sts, knit to last 2 sts, K2tog ... 11 (11-12-13-14) sts.

Dec one st at armhole edge in every alt row 6 (6-6-7-8) times, AT SAME TIME dec one st at neck edge in 2nd row, then every 4th (4th-alt-alt-4th) row 1 (1-1-1-2) time/s, then every 6th (6th-4th-4th-6th) row 1 (1-2-2-1) time/s ... 2 sts.

Work 1 row.

K2tog and fasten off.

NECKBAND

Join raglan seams, noting that tops of Sleeves form part of neckline.

With right side facing, using 3.25mm needles and C4, knit up 16 (17-16-19-21) sts along Right Front neck shaping, [K2tog, K6, K2tog] across right Sleeve stitch holder, [K2tog, K22 (24-26-28-28), K2tog] across Back stitch holder, [K2tog, K6, K2tog] across left Sleeve stitch holder, then knit up 16 (17-16-19-21) sts along Left Front neck shaping ... 72 (76-76-84-88) sts.

1st row: P3, * K2, P2, rep from * to last st, P1.

2nd row: K3, * P2, K2, rep from * to last st, K1.

Last 2 rows form 2x2 rib for Neckband.

Work a further 5 (5-5-7-7) rows 2x2 rib.

Cast off in 2x2 rib.

RIGHT FRONT BAND FOR GIRL OR LEFT FRONT BAND FOR BOY

With right side facing, using 3.25mm needles and C4, knit up 56 (64-72-84-104) sts along Right Front edge for Girl or Left Front edge for Boy, incl side edge of Neckband.

Work 3 (3-3-5-5) rows 2x2 rib as for Neckband.

Next row: Rib 3 (3-2-1-3), rib 2tog, yrn, * rib 10 (12-11-11-14), rib 2tog, yrn, rep from * to last 3 sts, rib 3 ... 5 (5-6-7-7) buttonholes.

Work 3 rows 2x2 rib.

Cast off in 2x2 rib.

LEFT FRONT BAND FOR GIRL OR RIGHT FRONT BAND FOR BOY

Work to correspond with other Front Band, omitting buttonholes.

FINISHING

Join side and Sleeve seams.

Sew on buttons. Sew in all ends.

MEASUREMENTS

Months		0	3	6	12	24
Fits chest	cm	35	40	45	50	55
Garment measures	cm	41	46	52	58	63
Length	cm	22	26	29	33	40
Sleeve length	cm	11	13	16	19	23

YARN REQUIRED

Lincraft Suprise	100g balls	1	2	2	3	3
------------------	------------	---	---	---	---	---

NEEDLES

A pair of 5.50mm knitting needles.
Wool needle for sewing up.

REQUIREMENTS

A cable needle.
A stitch holder.
4 (4-5-5-6) buttons.

TENSION

17 sts and 23 rows to 10cm over stocking st, using 5.50mm needles.

SPECIAL ABBREVIATION

C8F = slip next 4 sts onto cable needle and leave at front of work, K4, then K4 from cable needle.



EASY



LENNY JACKET

BACK

Using 5.50mm needles, cast on 37 (41-47-51-55) sts.

1st row: K2, * P1, K1, rep from * to last st, K1.

2nd row: K1, * P1, K1, rep from * to end. Last 2 rows form rib.

Work a further 3 (3-3-5-5) rows rib.

Next row: Rib 8 (10-12-14-16), inc in next st, rib 19 (19-21-21-21), inc in next st, rib 8 (10-12-14-16) ... 39 (43-49-53-57) sts.

Beg Cable Patt:

1st row: K2 (4-6-8-10), P3, K8, P3, K7 (7-9-9-9), P3, K8, P3, K2 (4-6-8-10).

2nd row: P2 (4-6-8-10), K3, P8, K3, P7 (7-9-9-9), K3, P8, K3, P2 (4-6-8-10).

Rep 1st and 2nd rows twice.

7th row: K2 (4-6-8-10), P3, C8F, P3, K7 (7-9-9-9), P3, C8F, P3, K2 (4-6-8-10).

Rep 2nd and 1st rows 3 times, then 2nd row once.

Last 14 rows form cable patt for Back.

Cont in cable patt until work measures 12 (15-17-20-26) cm from beg, working last row on wrong side.

Tie a coloured thread at each end of last row to mark beg of armholes, as there is no armhole shaping.

Cont in cable patt until work measures 22 (26-29-33-40) cm from beg, working last row on wrong side.

Shape Shoulders:

Keeping cable patt correct, cast off 4 (4-5-6-6) sts at beg of next 4 rows, then 3 (4-5-5-6) sts at beg of next 2 rows.

Leave rem 17 (19-19-19-21) sts on a stitch holder.

LEFT FRONT

Using 5.50mm needles, cast on 17 (19-21-23-25) sts.

Work 5 (5-5-7-7) rows rib.

Next row: Rib 8, inc in next st, rib to end ... 18 (20-22-24-26) sts.

Beg Cable Patt:

1st row: K2 (4-6-8-10), P3, K8, P3, K2.

2nd row: P2, K3, P8, K3, P2 (4-6-8-10). Rep 1st and 2nd rows twice.

7th row: K2 (4-6-8-10), P3, C8F, P3, K2. Rep 2nd and 1st rows 3 times, then 2nd row once.

Last 14 rows form cable patt for Left Front.

Cont in cable patt until work measures same as Back to coloured threads, working last row on wrong side.

Tie a coloured thread at end of last row to mark beg of armhole.

Cont in cable patt until there are 9 (9-9-9-11) rows less than Back to beg of shoulder shaping, working last row on right side.

Shape Neck:

Keeping cable patt correct, cast off 4 sts at beg of next row ... 14 (16-18-20-22) sts.

Dec one st at neck edge in next row, then every alt row 1 (3-1-1-2) time/s, then in every 4th row 1 (0-1-1-1) time/s ... 11 (12-15-17-18) sts.

Work 1 row.

Shape Shoulder:

Cast off 4 (4-5-6-6) sts at beg of next and alt row.

Work 1 row.

Cast off rem 3 (4-5-5-6) sts.

RIGHT FRONT

Using 5.50mm needles, cast on 17 (19-21-23-25) sts.

Work 5 (5-5-7-7) rows rib.

Next row: Rib 8 (10-12-14-16), inc in next st, rib 8 ... 18 (20-22-24-26) sts.

Beg Cable Patt:

1st row: K2, P3, K8, P3, K2 (4-6-8-10).

2nd row: P2 (4-6-8-10), K3, P8, K3, P2. Rep 1st and 2nd rows twice.

7th row: K2, P3, C8F, P3, K2 (4-6-8-10). Rep 2nd and 1st rows 3 times, then 2nd row once.

Last 14 rows form cable patt for Right Front.

Cont in cable patt until work measures same as Back to coloured threads, working last row on wrong side.

Tie a coloured thread at beg of last row to mark beg of armhole.

Cont in cable patt until there are 10 (10-10-10-12) rows less than Back to beg of shoulder shaping, working last row on wrong side.

Shape Neck:

Keeping cable patt correct, cast off 4 sts at beg of next row ... 14 (16-18-20-22) sts.

Dec one st at neck edge in every alt row 2 (4-2-2-3) times, then in every 4th row 1 (0-1-1-1) time/s ... 11 (12-15-17-18) sts. Work 2 rows.

Shape Shoulder:

Cast off 4 (4-5-6-6) sts at beg of next and alt row.

Work 1 row.

Cast off rem 3 (4-5-5-6) sts.

SLEEVES

Using 5.50mm needles, cast on 23 (25-25-27-29) sts.

Work 5 (5-5-7-7) rows rib.

Next row: Rib 11 (12-12-13-14), inc in next st, rib 11 (12-12-13-14) ... 24 (26-26-28-30) sts.

Beg Cable Patt:

1st row: K5 (6-6-7-8), P3, K8, P3, K5 (6-6-7-8).

2nd row: P5 (6-6-7-8), K3, P8, K3, P5 (6-6-7-8).

Rep 1st and 2nd rows once.

5th row: Inc in first st, K4 (5-5-6-7), P3, K8, P3, K4 (5-5-6-7), inc in last st ... 26 (28-28-30-32) sts.

6th row: P6 (7-7-8-9), K3, P8, K3, P6 (7-7-8-9).

7th row: Inc in first st 1 (1-1-1-0) time/s, K5 (6-6-7-9), P3, C8F, P3, K5 (6-6-7-9), inc in last st 1 (1-1-1-0) time/s ... 28 (30-30-32-32) sts.

8th row: P7 (8-8-9-9), K3, P8, K3, P7 (8-8-9-9).

Keeping cable patt correct as placed and working extra sts into stocking st, inc one st at each end of next (3rd-next-next-next) row, then every 4th row until there are 32 (36-40-44-40) sts, **Size 24 months only:** then every 6th row until there are 46 sts.

Cont in cable patt without shaping until work measures 11 (13-16-19-23) cm (or length desired) from beg, working last row on wrong side.

Cast off in patt.

NECKBAND

Join shoulder seams.

With right side facing and using 5.50mm needles, knit up 12 (12-12-12-14) sts along Right Front neck shaping, patt across Back stitch holder and dec two sts evenly across, then knit up 12 (12-12-12-14) sts along Left Front neck shaping ... 39 (41-41-47) sts.

Work 5 (5-5-7-7) rows rib, beg with a 2nd row. Cast off in rib.

RIGHT FRONT BAND FOR GIRL OR LEFT FRONT BAND FOR BOY

With right side facing and using 5.50mm needles, knit up 33 (39-51-55-67) sts along Right Front edge for Girl or Left Front edge for Boy, incl side edge of Neckband.

Work 3 rows rib, beg with a 2nd row.

4th row: Rib 2, rib 2tog, yrn, * rib 7 (9-9-10-10), rib 2tog, yrn, rep from * to last 2 (2-3-3-3) sts, rib 2 (2-3-3-3) ... 4 (4-5-5-6) buttonholes.

Work 1 (1-1-3-3) row/s rib.

Cast off in rib.

LEFT FRONT BAND FOR GIRL OR RIGHT FRONT BAND FOR BOY

Work to correspond with other Front Band, omitting buttonholes.

FINISHING

Sew in Sleeves evenly between coloured threads, placing centre of Sleeves to shoulder seams. Join side and Sleeve seams. Sew on buttons. Sew in all ends.

STRING OF HEARTS COT DECORATION

MEASUREMENTS

Height of Heart (approx)	cm	10
Width of Heart (approx at widest point)	cm	13

YARN REQUIRED

Lincraft Cosy Wool 8ply	100g balls	1
OR Lincraft Superwash 8ply	100g balls	1
OR Lincraft DK 8ply	100g balls	1
OR Lincraft Supersoft 8ply	50g balls	2
OR Scraps of yarn in a variety of colours		

NEEDLES

A pair of 4.00mm knitting needles.
Two double-pointed 4.00mm knitting needles.
Wool needle for sewing up.

REQUIREMENTS

Washable filling.
5 small bells.

TENSION

21 sts and 43 rows to 10cm over garter st, using 4.00mm needles.

NOTE

We have made five hearts in 8ply yarn but this pattern will suit any yarn. Simply use the recommended needle size written on the ball band of your chosen yarn. A thicker yarn will make a larger heart and a thinner yarn will make a smaller heart. Make as many hearts as you desire in a variety of yarns, colours and textures.

HEART PIECES (make 10)

Using a pair of 4.00mm needles, cast on 4 sts.
Working in garter st throughout, knit 2 rows.
Inc one st at each end of next row, then every alt row until there are 24 sts.
Knit 5 rows.
Dec one st at each end of next and alt row ... 20 sts.
Knit 1 row.
Next row: K2tog, K7, cast off next 2 sts, K6, K2tog.
Cont on last 8 sts.
Dec one st at each end of every alt row until 4 sts rem.
Knit 1 row.
Cast off these 4 sts.
With wrong side facing, join yarn to rem 8 sts.
Dec one st at each end of every alt row until 4 sts rem.
Knit 1 row.
Cast off.

I-CORD

Using two double-pointed 4.00mm needles, cast on 3 sts.
1st row: Knit.
****** Do not turn. Slide sts to other end of needle and K3.
Rep from ****** until work measures 100cm or length desired.
Cast off.

FINISHING

Using a flat seam, sew 2 Heart Pieces tog, leaving a small opening. Stuff firmly and insert a bell then close the opening. Sew the I-cord to the top of the Hearts, as pictured, leaving approx 7cm between each Heart. Sew in all ends.

8PLY



EASY

SACHA COT BLANKET

MEASUREMENTS

Width	cm	100
Length	cm	150

YARN REQUIRED

Lincraft Cosy Wool 8ply 100g balls

OR Lincraft Superwash 8ply

OR Lincraft DK 8ply

1st Colour (C1) 3

2nd Colour (C2) 3

3rd Colour (C3) 3

4th Colour (C4) 3

OR Lincraft Supersoft 8ply 50g balls

1st Colour (C1) 6

2nd Colour (C2) 6

3rd Colour (C3) 6

4th Colour (C4) 6

8PLY

NEEDLES

A 4.00mm circular knitting needle (80cm long).
Wool needle for sewing in ends.

TENSION

22 sts and 30 rows to 10cm over stocking st, using 4.00mm needles.

NOTE

A circular needle is used to accommodate the large number of sts. Work backwards and forwards in rows, not rounds.

COT BLANKET

Using 4.00mm circular needle and C4, cast on 210 sts. Knit in garter st for 3cm, working last row on right side.

Next row: K14, * inc in next st, K19, rep from * to last 16 sts, inc in next st, K15 ... 220 sts.

Beg Stripe Patt And Garter Edging:

**** 1st row:** Using C1, knit.

2nd row: K6, purl to last 6 sts, K6.

Rep last 2 rows until work measures 6cm from beg of stripe, ending with a 2nd row. **

Using C2, rep from ** to **.

Using C3, rep from ** to **.

Using C4, rep from ** to **.

Keeping stripe patt and garter edging correct, cont until work measures 147cm from beg, ending with 6cm of C4.

Next row: Using C1 for rem, K14, * K2tog, K19, rep from * to last 17 sts, K2tog, K15 ... 210 sts.

Knit in garter st for 3cm, working last row on wrong side.

Cast off.

FINISHING

Sew in all ends.



EASY

