

# COTTON 8 PLY SONORAN



Projects by  
Janine  
Tsakiris

### Primary Colours Tote Bag

Bright and highly contrasting primary colours using bold design and basic shapes produce this funky tote. The base is reinforced with cord to give it durability and strength.

The graph works in repeats of 12.

Advanced crochet

#### MEASUREMENTS:

Length cm 50  
Height (including handles) cm 55

#### Yarn Required:

Lincraft Cotton 8ply 50g balls  
Main Colour (MC – aqua) 6  
1st Colour (C1 – red) 4  
2nd Colour (C2 – yellow) 3

#### CROCHET HOOK:

A 3.50mm crochet hook.

#### REQUIREMENTS:

Stitch marker.  
Wool needle for sewing up.  
5m of 5mm cord.

#### TENSION:

Tension is not important for this project.

#### SPECIAL ABBREVIATIONS:

**blo** = back loop only.  
**mdc** = modified double crochet.



# PRIMARY COLOURS TOTE BAG

## **BASE (worked in continuous rounds over 5mm cord)**

Using 3.50mm hook and MC, make 121ch.

Leaving approx 15cm of cord at beg of work, add cord in and carry under sts. To add in cord, work the first step of a dc and pull up a loop. Lay the cord over the top of the st and work final step of dc with yarn over and pull through over the top of the cord.

**1st round:** 3dc in 2nd ch from hook, 1dc in each of next 118ch, 5dc in next ch, turn to work back along starting ch, 1dc in each of next 117dc, 2dc in next ch ... 245dc.

Do not sl st or 1ch. Use a stitch marker to mark beg of each round, moving it up as each round is completed.

Take your time to straighten and gently pull cord carried under the stitches so it is hidden, and work is kept neat and flat. Rep this after every round to maintain a neat, flat base.

**2nd round:** Inc in each of next 3dc, 1dc in each of next 118dc, inc in each of next 5dc, 1dc in each of next 118dc, inc in each of next 2dc ... 256dc.

**3rd round:** Inc in each of next 6dc, 1dc in each of next 118dc, inc in each of next 10dc, 1dc in each of next 118dc, inc in each of next 4dc ... 276dc.

**4th round:** Inc in each of next 12dc, 1dc in each of next 118dc, inc in each of next 20dc, 1dc in each of next 118dc, inc in each of next 8dc ... 316dc.

**5th round:** (1dc in each of next 3dc, inc in next dc) 6 times, 1dc in each of next 118dc, (1dc in each of next 3dc, inc in next dc) 10 times, 1dc in each of next 118dc, (1dc in each of next 3dc, inc in next dc) 4 times ... 336dc.

Finish off cord leaving a 15cm tail.

**Work in blo with mdc for rem.**  
Written patt follows graph from 6th round.

**6th round:** 1mdc in each dc to end. Join in C1 and C2 and carry under working yarn.

**7th round:** (1mdc in each of next 4mdc, change to C2, 1mdc in each of next 6mdc, change to C1, 1mdc in each of next 9mdc, change to C2, 1mdc in each of next 6mdc, change to MC, 1mdc in each of next 3mdc) 12 times ... 336mdc.

**8th round:** (1mdc in each of next 2mdc, change to C2, 1mdc in each of next 6mdc, change to C1, 1mdc in each of next 6mdc, change to C2, 1mdc in each of next 6mdc, change to MC, 1mdc in next mdc) 12 times ... 336mdc.

Change to C2.

**9th round:** (1mdc in each of next 6mdc, change to C1, 1mdc in each of next 6mdc, change to MC, 1mdc in each of next 5mdc, change to C1, 1mdc in each of next 6mdc, change to C2, 1mdc in each of next 5mdc) 12 times ... 336mdc.

**10th round:** (1mdc in each of next 4mdc, change to C1, 1mdc in each of next 6mdc, change to MC, 1mdc in each of next 9mdc, change to C1, 1mdc in each of next 6mdc, change

to C2, 1mdc in each of next 3mdc) 12 times ... 336mdc.

**11th round:** (1mdc in each of next 2mdc, change to C1, 1mdc in each of next 6mdc, change to MC, 1mdc in each of next 6mdc, change to C2, 1mdc in next mdc, change to MC, 1mdc in each of next 6mdc, change to C1, 1mdc in each of next 6mdc, change to C2, 1mdc in next mdc) 12 times ... 336mdc.

Change to C1.

**12th round:** (1mdc in each of next 6mdc, change to MC, 1mdc in each of next 6mdc, change to C2, 1mdc in each of next 5mdc, change to MC, 1mdc in each of next 6mdc, change to C1, 1mdc in each of next 5mdc) 12 times ... 336mdc.

**13th round:** (1mdc in each of next 4mdc, change to MC, 1mdc in each of next 6mdc, change to C2, 1mdc in each of next 9mdc, change to MC, 1mdc in each of next 6mdc, change to C1, 1mdc in each of next 3mdc) 12 times ... 336mdc.

**14th round:** (1mdc in each of next 2mdc, change to MC, 1mdc in each of next 6mdc, change to C2, 1mdc in each of next 6mdc, change to C1, 1mdc in next mdc, change to C2, 1mdc in each of next 6mdc, change to MC, 1mdc in each of next 6mdc, change to C1, 1mdc in next mdc) 12 times ... 336mdc.

Change to MC.

**15th round:** (1mdc in each of next 6mdc, change to C2, 1mdc in each of next 6mdc, change to C1, 1mdc in each of next 6mdc, change to MC, 1mdc in each of next 5mdc) 12 times ... 336mdc.

Rep rounds 7 to 15 once.

Rep rounds 7 to 10 once.

**29th round:** (1mdc in each of next 2mdc, change to C1, 1mdc in each of next 6mdc, change to MC, 1mdc in each of next 13mdc, change to C1, 1mdc in each of next 6mdc, change to C2, 1mdc in next mdc) 12 times ... 336mdc.

Change to C1.

**30th round:** (1mdc in each of next 6mdc, change to MC, 1mdc in each of next 17mdc, change to C1, 1mdc in each of next 5mdc) 12 times ... 336mdc.

**31st round:** (1mdc in each of next 4mdc, change to MC, 1mdc in each of next 21mdc, change to C1, 1mdc in each of next 3mdc) 12 times ... 336mdc.

**32nd round:** 1mdc in each mdc to end. Change to C2.

**33rd round:** 1mdc in each mdc to end. Change to C1.

**34th round:** 1mdc in each mdc to end. Change to C2.

**35th round:** (1mdc in next mdc, change to MC, 1mdc in each of next 13mdc, change to C2) 24 times ... 336mdc.

**36th round:** (1mdc in each of next 3mdc, change to MC, 1mdc in each of next 9mdc, change to C2, 1mdc in each of next 5mdc, change to MC, 1mdc in each of next 9mdc, change to C2, 1mdc in each of next 2mdc) 12 times ... 336mdc.

**37th round:** (1mdc in each of next 5mdc, change to MC, 1mdc in each

of next 5mdc, change to C2, 1mdc in each of next 9mdc, change to MC, 1mdc in each of next 5mdc, change to C2, 1mdc in each of next 4mdc) 12 times ... 336mdc.

**38th round:** (1mdc in each of next 7mdc, change to MC, 1mdc in next mdc, change to C2, 1mdc in each of next 13mdc, change to MC, 1mdc in next mdc, change to C2, 1mdc in each of next 6mdc) 12 times ... 336mdc.

Rep 37th round once.

Rep 36th round once.

Rep 35th round once.

**42nd round:** (1mdc in each of next 6mdc, change to C1, 1mdc in each of next 3mdc, change to MC, 1mdc in each of next 11mdc, change to C1, 1mdc in each of next 3mdc, change to MC, 1mdc in each of next 5mdc) 12 times ... 336mdc.

**43rd round:** (1mdc in each of next 4mdc, change to C1, 1mdc in each of next 7mdc, change to MC, 1mdc in each of next 7mdc, change to C1, 1mdc in each of next 7mdc, change to MC, 1mdc in each of next 3mdc) 12 times ... 336mdc.

**44th round:** (1mdc in each of next 2mdc, change to C1, 1mdc in each of 11mdc, change to MC, 1mdc in each of next 3mdc, change to C1, 1mdc in each of next 11mdc, change to MC, 1mdc in next mdc) 12 times ... 336mdc.

**45th round:** (1mdc in next mdc, change to C1, 1mdc in each of next 13mdc, change to MC) 24 times ... 336mdc.

In reverse order rep 44th to 19th rounds once.

Do not fasten off, cont to work Handles.

## **HANDLES (worked in continuous rounds)**

Change to MC.

**1st round:** 1mdc in each mdc to end.

**2nd round:** 1mdc in each of next 58mdc, 100ch, miss 68mdc, 1mdc in each of next 100mdc, 100ch, miss 68mdc, 1mdc in each of next 42mdc ... 200mdc, 100ch lps x 2.

**3rd round:** 1mdc in each of next 58mdc, 1mdc in each of next 100ch, 1mdc in each of next 100mdc, 1mdc in each of next 100ch, 1mdc in each of next 42mdc ... 400mdc.

**4th round:** 1mdc in each mdc to end. Rep 4th round once.

Change to C1.

**6th round:** Sl st in each of next 58mdc, 1mdc in each of next 100mdc, sl st in each of next 100mdc, 1mdc in each of next 100mdc, sl st in each of next 42mdc ... 400 sts.

Fasten off leaving tail for sewing.

## **INNER HANDLE EDGING**

With right side facing, attach C1 in first missed mdc from 2nd round of Handle, sl st in each of next 67mdc, 1mdc in each of next 100ch, sl st to beg mdc.

Rep for second Handle.

## **FINISHING**

Gently pull base cord and snip off excess carefully as close to sts as possible. Sew in all ends.

### BAG BASE (worked as one piece in rounds)

Using 3.50mm hook and MC, work 8dc into mr.

**1st round:** Inc in each dc to end ... 16dc.

**2nd round:** (1dc in next dc, inc in next dc) 8 times ... 24dc.

**3rd round:** (1dc in each of next 2dc, inc in next dc) 8 times ... 32dc.

Work with mdc for rem.

**4th round:** (1mdc in each of next 3dc, inc in next dc) 8 times ... 40mdc.

**5th round:** (1mdc in each of next 4mdc, inc in next mdc) 8 times ... 48mdc.

Join in C1 and carry under working yarn.

**6th round:** (1mdc in each of next 3mdc, change to C1, 1mdc in next mdc, change to MC, 1mdc in next mdc, inc in next mdc) 8 times ... 56mdc.

**7th round:** (1mdc in each of next 3mdc, change to C1, 1mdc in each of next 2mdc, change to MC, 1mdc in next mdc, inc in next mdc) 8 times ... 64mdc.

**8th round:** (1mdc in each of next 3mdc, change to C1, 1mdc in each of next 3mdc, change to MC, 1mdc in next mdc, inc in next mdc) 8 times ... 72mdc.

**9th round:** (1mdc in each of next 3mdc, change to C1, 1mdc in each of next 4mdc, change to MC, 1mdc in next mdc, inc in next mdc) 8 times ... 80mdc.

**10th round:** (1mdc in each of next 3mdc, change to C1, 1mdc in each of next 5mdc, change to MC, 1mdc in next mdc, inc in next mdc) 8 times ... 88mdc.

**11th round:** (1mdc in each of next 3mdc, change to C1, 1mdc in each of next 6mdc, change to MC, 1mdc in next mdc, inc in next mdc) 8 times ... 96mdc.

**12th round:** (1mdc in each of next 3mdc, change to C1, 1mdc in each of next 7mdc, change to MC, 1mdc in next mdc, inc in next mdc) 8 times ... 104mdc.

**13th round:** (1mdc in each of next 3mdc, change to C1, 1mdc in each of next 8mdc, change to MC, 1mdc in next mdc, inc in next mdc) 8 times ... 112mdc.

**14th round:** (1mdc in each of next 3mdc, change to C1, 1mdc in each of next 9mdc, change to MC, 1mdc in next mdc, inc in next mdc) 8 times ... 120mdc.

**15th round:** (1mdc in each of next 3mdc, change to C1, 1mdc in each of next 10mdc, change to MC, 1mdc in next mdc, inc in next mdc) 8 times ... 128mdc.

**16th round:** (1mdc in each of next 3mdc, change to C1, 1mdc in each of next 11mdc, change to MC, 1mdc in next mdc, inc in next mdc) 8 times ... 136mdc.

**17th round:** (1mdc in each of next 3mdc, change to C1, 1mdc in each of next 12mdc, change to MC, 1mdc in next mdc, inc in next mdc) 8 times ... 144mdc.

**18th round:** (1mdc in each of next 3mdc, change to C1, 1mdc in each of next 13mdc, change to MC, 1mdc in next mdc, inc in next mdc) 8 times ... 152mdc.

**19th round:** (1mdc in each of next 3mdc, change to C1, 1mdc in each of next 14mdc, change to MC, 1mdc in next mdc, inc in next mdc) 8 times ... 160mdc.

**20th round:** (1mdc in each of next 3mdc, change to C1, 1mdc in each of next 15mdc, change to MC, 1mdc in next mdc, inc in next mdc) 8 times ... 168mdc.

**21st round:** (1mdc in each of next 3mdc, change to C1, 1mdc in each of next 16mdc, change to MC, 1mdc in next mdc, inc in next mdc) 8 times ... 176mdc.

**22nd round:** (1mdc in each of next 3mdc, change to C1, 1mdc in each of next 17mdc, change to MC, 1mdc in next mdc, inc in next mdc) 8 times ... 184mdc.

**23rd round:** (1mdc in each of next 3mdc, change to C1, 1mdc in each of next 18mdc, change to MC, 1mdc in next mdc, inc in next mdc) 8 times ... 192mdc.

**24th round:** (1mdc in each of next 3mdc, change to C1, 1mdc in each of next 19mdc,

change to MC, 1mdc in next mdc, inc in next mdc) 8 times ... 200mdc.

**25th round:** (1mdc in each of next 3mdc, change to C1, 1mdc in each of next 20mdc, change to MC, 1mdc in next mdc, inc in next mdc) 8 times ... 208mdc.

**26th round:** (1mdc in each of next 3mdc, change to C1, 1mdc in each of next 21mdc, change to MC, 1mdc in next mdc, inc in next mdc) 8 times ... 216mdc.

**27th round:** (1mdc in each of next 3mdc, change to C1, 1mdc in each of next 22mdc, change to MC, 1mdc in next mdc, inc in next mdc) 8 times ... 224mdc.

**28th round:** (1mdc in each of next 27mdc, inc in next mdc) 8 times ... 232mdc.

**29th round:** (1mdc in each of next 28mdc, inc in next mdc) 8 times ... 240mdc.

**30th round:** (1mdc in each of next 29mdc, inc in next mdc) 8 times ... 248mdc.

**31st round:** (1mdc in each of next 30mdc, inc in next mdc) 8 times ... 256mdc.

Do not fasten off, cont to work Bag Body.

### BAG BODY (worked as one piece in rounds)

**Work in blo with mdc for rem.**

Written patt follows graph from 32nd round.

**32nd round:** 1mdc in each mdc to end.

Rep 32nd round once.

Join in and change to C5. Finish off C1. Carry MC under working yarn.

**34th round:** 1mdc in each mdc to end.

Rep 34th round once.  
Change to C3. Carry MC and C5 under working yarn.

**36th round:** 1mdc in each mdc to end.

Rep 36th round once.

Change to C2. Carry MC, C3 and C5 under working yarn.

**38th round:** 1mdc in each mdc to end.

Rep 38th round once.

Change to C3.

**40th round:** 1mdc in each mdc to end.

Rep 40th round once.

Change to C5.

**42nd round:** 1mdc in each mdc to end.

Rep 42nd round once.

Change to MC.

**44th round:** 1mdc in each mdc to end.

Rep 44th round once.

Join in C1 and carry under working yarn.

**46th round:** (1mdc in each of next 3mdc, change to C1, 1mdc in each of next 26mdc, change to MC, 1mdc in each of next 3mdc) 8 times ... 256mdc.

Change to C2.

**47th round:** (1mdc in next mdc, change to MC, 1mdc in each of next 3mdc, change to C1, 1mdc in each of next 24mdc, change to MC, 1mdc in each of next 3mdc, change to C2, 1mdc in next mdc) 8 times ... 256mdc.

Rep 47th round once.

**49th round:** (1mdc in each of next 3mdc, change to MC, 1mdc in each of next 3mdc, change to C1, 1mdc in each of next 5mdc, change to C2, 1mdc in each of next 10mdc, change to C1, 1mdc in each of next 5mdc, change to MC, 1mdc in each of next 3mdc, change to C2, 1mdc in each of next 3mdc) 8 times ... 256mdc.

Rep 49th round once.

Change to C5.

**51st round:** (1mdc in each of next 2mdc, change to C2, 1mdc in each of next 3mdc, change to MC, 1mdc in each of next 3mdc, change to C1, 1mdc in each of next 5mdc, change to C2, 1mdc in each of next 6mdc, change to C1, 1mdc in each of next 5mdc, change to MC, 1mdc in each of next 3mdc, change to C2, 1mdc in each of next 3mdc, change to C5, 1mdc in each of next 2mdc) 8 times ... 256mdc.

Rep 51st round once.

**53rd round:** (1mdc in each of next 4mdc, change to C2, 1mdc in each of next 3mdc, change to MC, 1mdc in each of next 3mdc,

### Wayuu Style Bucket Bag

With simple repeats, this pattern produces a striking geometric design. It produces a large bucket bag similar in style to the traditional Wayuu Bag. It involves working with up to 5 yarns at a time. The graph works in repeats of 8.

Advanced crochet

#### MEASUREMENTS:

Width	cm	30
Height (including handles)	cm	82

#### Yarn Required:

Lincraft Cotton 8ply	50g balls	
Main Colour (MC – lavender)		4
1st Colour (C1 – periwinkle)		3
2nd Colour (C2 – white)		2
3rd Colour (C3 – black)		2
4th Colour (C4 – mint)		2

#### CROCHET HOOK:

A 3.50mm crochet hook.

#### REQUIREMENTS:

Wool needle for sewing up.  
Stitch marker.

#### TENSION:

Tension is not important for this project.

#### SPECIAL ABBREVIATIONS:

**mr** = magic ring (alternatively 5ch, sl st into beg ch and dc into ring).

**blo** = back loop only.

**mdc** = modified double crochet.

change to C1, 1mdc in each of next 5mdc, change to C2, 1mdc in each of next 2mdc, change to C1, 1mdc in each of next 5mdc, change to MC, 1mdc in each of next 3mdc, change to C1, 1mdc in each of next 3mdc, change to C5, 1mdc in each of next 4mdc) 8 times ... 256mdc.

Rep 53rd round once.

Change to C3.

**55th round:** (1mdc in each of next 2mdc, change to C5, 1mdc in each of next 4mdc, change to C2, 1mdc in each of next 3mdc, change to MC, 1mdc in each of next 3mdc, change to C1, 1mdc in each of next 8mdc, change to MC, 1mdc in each of next 3mdc, change to C1, 1mdc in each of next 3mdc, change to C5, 1mdc in each of next 4mdc, change to C3, 1mdc in each of next 2mdc) 8 times ... 256mdc.

Rep 55th round once.

Change to MC.

**57th round:** (1mdc in each of next 2mdc, change to C3, 1mdc in each of next 2mdc, change to C5, 1mdc in each of next 4mdc, change to C2, 1mdc in each of next 3mdc, change to MC, 1mdc in each of next 3mdc, change to C1, 1mdc in each of next 4mdc, change to MC, 1mdc in each of next 3mdc, change to C2, 1mdc in each of next 3mdc, change to C5, 1mdc in each of next 4mdc, change to C3, 1mdc in each of next 2mdc, change to MC, 1mdc in each of next 2mdc) 8 times ... 256mdc.

Rep 57th round once.

**59th round:** (1mdc in each of next 4mdc, change to C3, 1mdc in each of next 2mdc, change to C5, 1mdc in each of next 4mdc, change to C2, 1mc in each of next 3mdc, change to MC, 1mdc in each of next 6mdc, change to C2, 1mdc in each of next 3mdc, change to C5, 1mdc in each of next 4mdc, change to C3, 1mdc in each of next 2mdc, change to MC, 1mdc in each of next 4mdc) 8 times ... 256mdc.

Rep 59th round once.

Change to C2.

**61st round:** (1mdc in next mdc, change to MC, 1mdc in each of next 5mdc, change to C3, 1mdc in each of next 2mdc, change to C5, 1mdc in each of next 4mdc, change to C2, 1mdc in each of next 3mdc, change to MC, 1mdc in each of next 2mdc, change to C2, 1mdc in each of next 3mdc, change to C5, 1mdc in each of next 4mdc, change to C3, 1mdc in each of next 2mdc, change to MC, 1mdc in each of next 5mdc, change to C2, 1mdc in next mdc) 8 times ... 256mdc. Rep 61st round once.

In reverse order rep 60th to 32nd rounds.

**92nd round:** 1mdc in each mdc to end.

Rep 92nd round twice.

**95th round:** 1mdc in each of next 2mdc, 4ch, miss 4, (1mdc in each of next 20mdc, miss 4, 4ch, 1mdc in each of next 4mdc, miss 4, 4ch) 7 times, 1mdc in each of next 20mdc, miss 4, 4ch, 1mdc in each of next 2mdc ... 192mdc, 16 4ch sps.

**96th round:** 1mdc in each of next 2mdc, 3mdc in ch sp, (1mdc in each of next 20mdc, 3mdc in ch sp, 1mdc in each of next 4mdc, 3mdc in ch sp) 7 times, 1mdc in each of next 20mdc, 3mdc in ch sp, 1mdc in each of next 2mdc ... 240mdc.

**97th round:** 1mdc in each mdc to end.

Rep 97th round 3 times.

Fasten off leaving tail for sewing.

#### **HANDLE (worked in turned rows)**

Leave long tail at beg of work for sewing.

Using 3.50mm hook and MC, make 211ch.

**1st row:** 1dc in 2nd ch from hook, 1dc in each ch to end ... 210dc.

**2nd row:** 1ch, turn, 1dc in each dc to end. Change to C5.

**3rd row:** 1ch, turn, 1dc in each dc to end. Rep 3rd row once.

Change to C3.

**5th row:** 1ch, turn, 1dc in each dc to end. Rep 5th row once.

Change to C2.

**7th row:** 1ch, turn, 1dc in each dc to end. Rep 7th row once.

Change to C3.

**9th row:** 1ch, turn, 1dc in each dc to end. Rep 9th row once.

Change to C5.

**11th row:** 1ch, turn, 1dc in each dc to end. Rep 11th row once.

Change to MC.

**13th row:** 1ch, turn, 1dc in each dc to end. Rep 13th row once.

Fasten off leaving long tail for sewing.

#### **BAG TIE**

Using 3.50mm hook and MC, C1 and C2 held tog, crochet a chain approx 140cm long.

Knot and neaten ends.

#### **FINISHING**

Sew in ends on Handle leaving the long tail of MC at each end for sewing to the Bag Body.

The back of the Bag is where each round ended/beg.

Weave Bag Tie through holes left in 95th and 96th rounds of Bag Body.

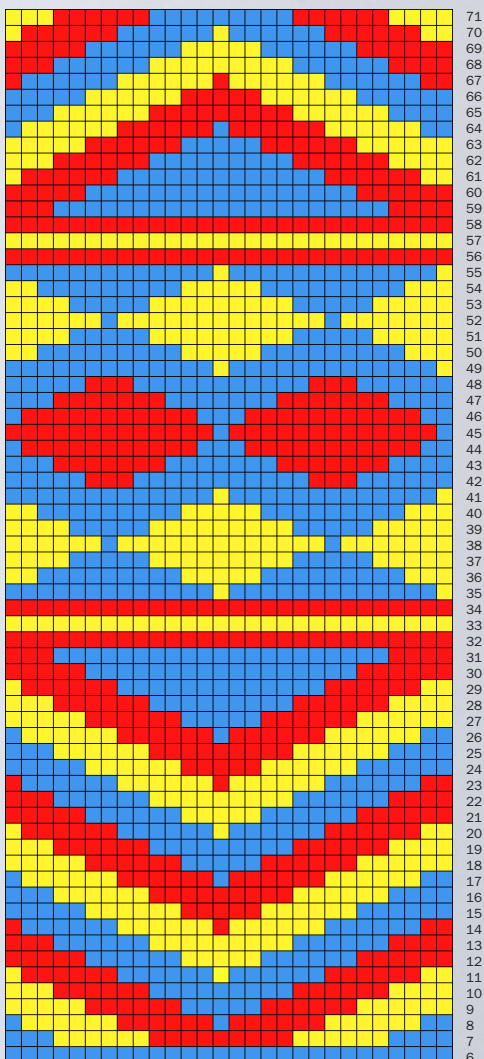
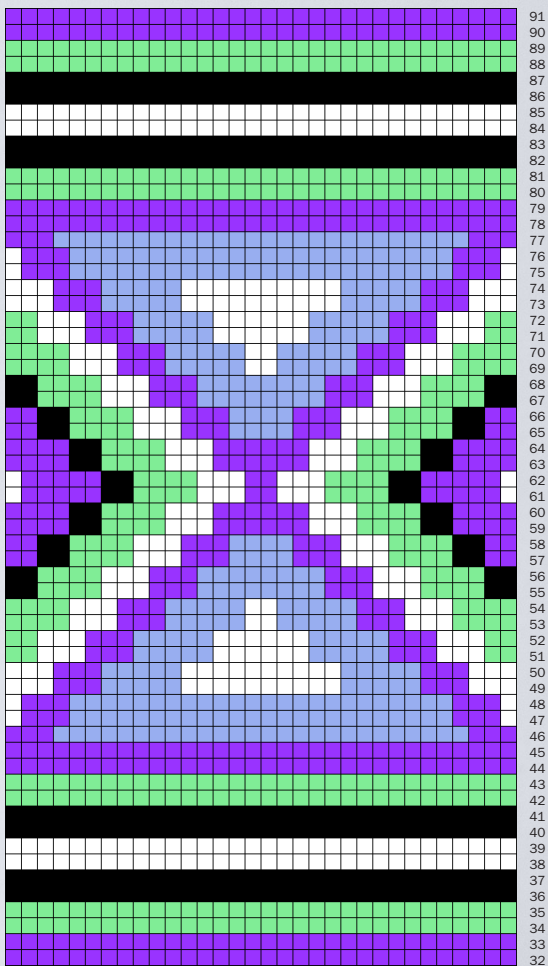
Attach Tassels to ends of Bag Tie if desired.

Position Handle on sides of Bag Body approx 3 to 4 rounds down from top and pin to check placement. Sew in place.

Sew in all ends.

# WAYUU STYLE BUCKET BAG





# NOTES FOR TAPESTRY CROCHET

Tapestry crochet is a special technique that creates a multi-coloured work of art with colour changes throughout the rounds. All yarn is hidden under the working yarn allowing you to produce a neat and striking fabric with minimal ends to weave in. Highly contrasting colours work best for this form of crochet and produce stunning results.

Patterns are worked in rounds. There are no slip stitches or 1 chain at the beginning of rounds. Use a stitch marker to mark the beginning of each round, moving it up as you go. Due to how you move from round to round in Tapestry Crochet, a pattern break where one round ends and the next begins, is quite typical.

Yarn not being used is carried under the working yarn. The reverse side of the work should look similar to the front. There should be no loose yarns. Unless specified, always carry at least one of the colours under the work to help maintain the integrity of the stitches.

Occasionally give the carried yarns a gentle tug. This will help prevent some of the colours showing through the front of your work and ensure the even look of stitches.

To avoid a tangled mess, try to prevent the yarns from crossing over each other. A good idea is to place each colour/ball in its own space/container and, as you work, ensure the yarns don't cross.

For these patterns the Bases are worked in normal double crochet (dc) stitches through both loops unless specified.

The Bodies of the bags are worked in back loops only (blo) using a modified double crochet (mdc) unless specified.

The use of a **modified double crochet** (mdc) in the **back loops only** (blo) will give more of a straight vertical look to the pattern design rather than the slight slant that is common with normal double crochet.

The majority of Tapestry Crochet patterns are written with a **graph pattern** only. These are worked from the bottom up, right to left. Each square represents one stitch. Sometimes the whole graph is provided or sometimes just a section with instructions to repeat the sequence a set number of times within a round.

These graphs are designed for using the modified double crochet in back loops. While the patterns can be done in normal double crochet through both loops, this will result in a more slanted look to the pattern.

## Modified Double Crochet

Work through the blo and pull through yarn, **YARN UNDER** and pull through the loop to complete the stitch. To **yarn under** place the hook over and behind the yarn strand and hook the yarn from above and pull through.

## Colour change

A colour change is made on the last step before a new colour stitch. Work the stitch, yarn over and pull up a loop, **ADD NEW COLOUR**, yarn over or under as per the pattern directions and pull through the new colour to complete the stitch.

Add new colours at the beginning of the round to which they will be introduced. When a colour is no longer needed, finish working with it at the end of a round. This will help maintain tension and avoid bumps throughout your work.

# Lincraft



## LINCRAFT COTTON 8PLY

**Composition:** 100% Cotton  
**Weight:** 50g  
**Meterage:** 100m  
**Needle Size:** 4.00mm  
**Tension (10cm x 10cm):** 22 stitches x 30 rows  
**Care Instructions:** Cold Hand Wash, Do Not Bleach, Dry Flat In Shade, Warm Iron, Dry Cleanable



## ABBREVIATIONS

**alt:** alternate  
**beg:** beginning  
**ch:** chain  
**cm:** centimetre  
**cont:** continue  
**dc:** double crochet  
**dec:** decrease  
**dtr:** double treble  
**full:** following  
**htr:** half treble  
**inc:** increase  
**lp/s:** loop/s  
**mm:** millimetre  
**patt:** pattern  
**rem:** remaining  
**rep:** repeat  
**sl st:** slip stitch  
**sp/s:** space/s

**st/s:** stitch/es  
**tog:** together  
**tr:** treble  
**yoh:** yarn over  
hook

## METRIC IMPERIAL US METRIC IMPERIAL US

2.00mm	14	-	4.50mm	7	7
2.25mm	13	B/1	5.00mm	6	H/8
2.50mm	12	-	5.50mm	5	I/9
2.75mm	-	C/2	6.00mm	4	J/10
3.00mm	11	-	6.50mm	3	K/10
3.25mm	10	D/3	7.00mm	2	-
3.50mm	9	E/4	8.00mm	0	-
3.75mm	-	F/5	9.00mm	00	-
4.00mm	8	G/6	10.00mm	000	-



30311831