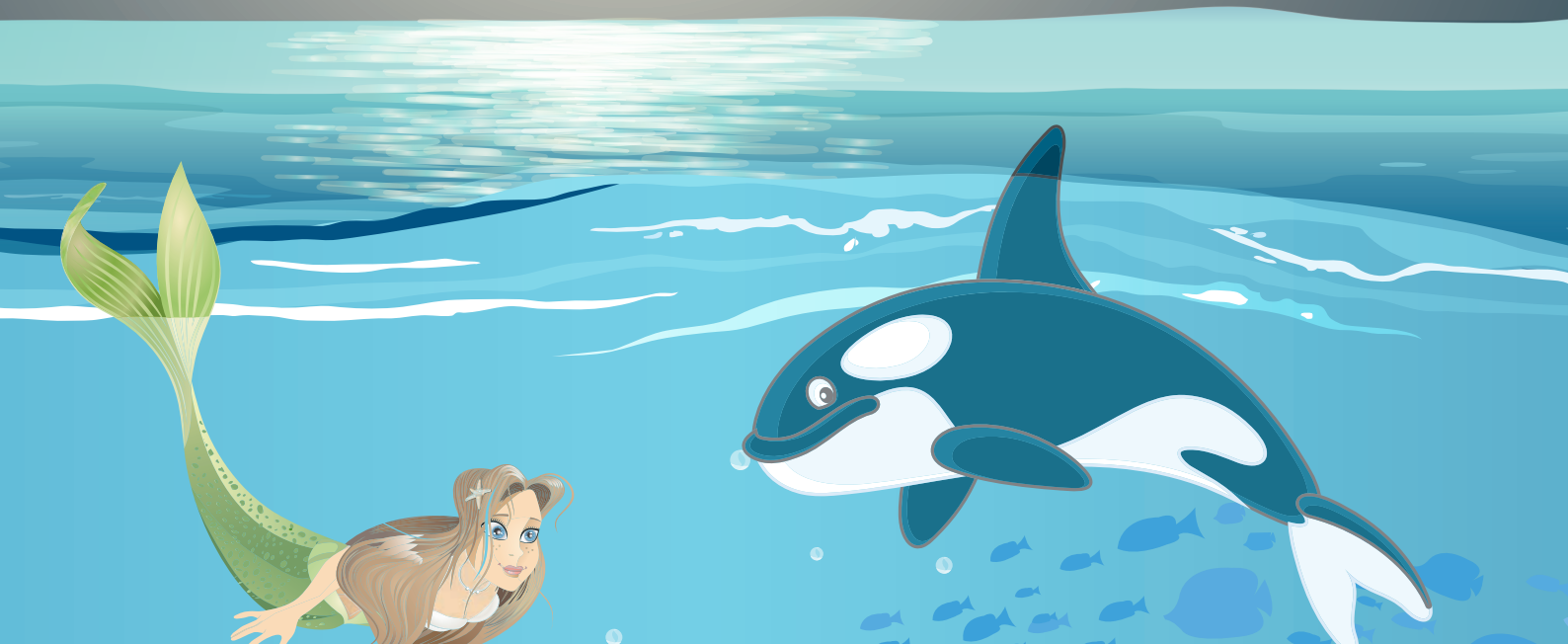


CLUB MEMBERS
PRICE
\$2.99
REGULAR PRICE \$7.99

Lincraft



A Home in the Sea

Part Two



Mermaid

Easy Knit



MEASUREMENTS

Height (approx) cm 46

YARN REQUIRED

Lincraft DK, Cosy Wool or Superwash 8ply	100g balls
1st Colour (C1-beige)	1
2nd Colour (C2-lime green)	1
3rd Colour (C3-black)	1

NEEDLES

A pair of 3.75mm knitting needles.
Wool needle for sewing up.

REQUIREMENTS

A pair of safety eyes, wobbly eyes or scraps of black yarn to embroider eyes.
Scraps of red yarn to embroider mouth.
Washable filling.
A crochet hook.

TENSION

23.5 sts and 32 rows to 10cm over stocking st, using 3.75mm needles.

NOTE

This Mermaid has been knitted on smaller needles and at a tighter tension than usually recommended.

FRONT OF HEAD, BODY AND TAIL

(beg at top of Head)

Using 3.75mm needles and C1, cast on 11 sts.
Work 2 rows stocking st.
Cont in stocking st and inc one st at each end of next row, then every alt row until there are 17 sts.
Tie a coloured thread at each end of last row.
Work 7 rows.
Dec one st at each end of next row and foll alt row ... 13 sts.
Purl 1 row.
*** Cast off 2 sts at beg of next 2 rows ... 9 sts.
Work 3 rows.
Dec one st at each end of next row ... 7 sts.

Beg Body:

Work 2 rows.
Cast on 3 sts at beg of next 4 rows ... 19 sts.
Work 12 rows.

Shape Armholes:

Cast on 2 sts at beg of next 2 rows ... 23 sts.
Work 6 rows.
Dec one st at each end of next row, then every 4th row until 15 sts rem.
Work 3 rows.

Beg Tail:

Using C2 and moss st for rem, work as folls:
1st row: K1, * P1, K1, rep from * to end.
Last row forms moss st.
Work 3 rows.
Keeping moss st correct, inc one st at each end of next row and foll 4th row ... 19 sts.
Work 7 rows.
Dec one st at each end of next row, foll 6th row, foll 10th row, then foll 14th row ... 11 sts.
Work 15 rows.
Dec one st at each end of next row, then every alt row until 5 sts rem.
Work 1 row.
Inc one st at each end of next row, then every alt row until there are 15 sts.
Work 1 row.

Divide For Tail Fin:

Next row: Moss 7, turn.
Cont on these 7 sts only.
** Work 1 row.
Inc one st at each end of next row ... 9 sts.
Work 3 rows.
Dec one st at each end of next row, then every alt row until 3 sts rem.
Work 1 row.
K3tog and fasten off. **
With right side facing, join yarn to rem 8 sts, K2tog then moss to end.
Rep from ** to **.

BACK OF HEAD, BODY AND TAIL

(beg at top of Head)

Using 3.75mm needles and C3, cast on 11 sts.
Work 2 rows stocking st.
Cont in stocking st and inc one st at each end of next row, then every alt row until there are 17 sts.
Tie a coloured thread at each end of last row.
Work 7 rows.
Dec one st at each end of next row and foll alt row ... 13 sts.
Purl 1 row.
Change to C1.
Work as for Front Of Head, Body and Tail from *** to end.

HEAD GUSSET

Using 3.75mm needles and C3, cast on 2 sts.
1st row: Inc once in each st ... 4 sts.
Purl 1 row.
Cont in stocking st and inc one st at each end of next row, then every alt row until there are 10 sts.
Work 13 rows.
Dec one st at each end of next row, then every alt row until 2 sts rem.
Next row: P2tog and fasten off.

ARMS (make 2 – beg at top of Arm)

Using 3.75mm needles and C1, cast on 18 sts.
Work 2 rows stocking st.
Cont in stocking st and cast on 2 sts at beg of next 2 rows ... 22 sts.
Work 2 rows.

Dec one st at each end of next row, foll 6th row, then every 4th row until 12 sts rem.
Work 3 rows.
Cast off 2 sts at beg of next 2 rows ... 8 sts.
Dec one st at each end of next row and foll alt row ... 4 sts.
Break off yarn, run end through rem sts, draw up tightly and fasten off securely.

BIKINI TOP (worked sideways)

Using 3.75mm needles and C2, cast on 3 sts, leaving a 22cm length of yarn.
Knit 2 rows garter st.
**** Cont in garter st and inc one st at each end of next row, then every alt row until there are 9 sts.
Knit 3 rows.
Dec one st at each end of next row, then every alt row until 3 sts rem.
Knit 1 row. ****
Rep from **** to ****.
Cast off, leaving a 22cm length of yarn.

FINISHING

Head, Body, Tail, Head Gusset and Arms:

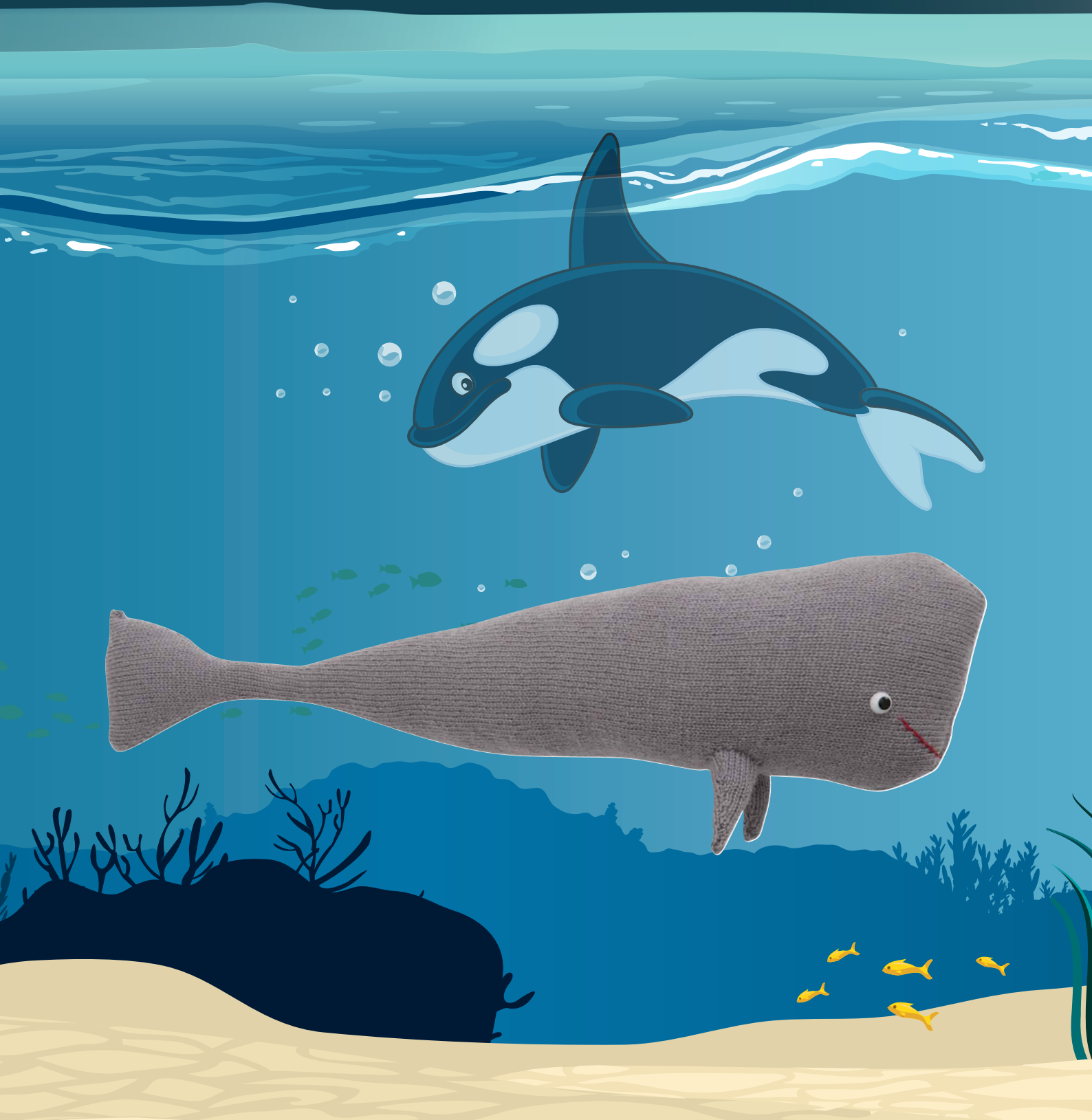
Using mattress st, sew Head Gusset in position between coloured threads on Front and Back of Head. Attach safety eyes, or wobbly eyes, or if preferred embroider eyes using black yarn. Using red yarn, embroider mouth. Join Head and shoulder seams. Stuff Head firmly. Sew cast on edge of Arms into armholes. Sew Arm side seams, stuffing firmly as you go. Sew Body and Tail seams, stuffing firmly as you go.

Bikini Top: Use the lengths of yarn left when casting on and casting off to tie the Bikini Top at the Mermaid's back. Attach a 22cm length of C2 yarn to the centre top of each Bikini cup. Tie at the back of the Mermaid's neck.

Hair: Cut approx 110 strands of C3 yarn, each 40cm long. Using crochet hook make a fringe across the back of the Head where C3 and C1 yarns meet, by folding a length of C3 yarn in half and drawing it through a stitch then pulling the 2 ends through the loop and pulling tightly to form a knot. Cont in this manner across back of Head and Head Gusset leaving 1.5cm between rows. Sew in all ends.

Whale

Easy Knit



MEASUREMENTS

Length (approx) cm 80

YARN REQUIRED

Lincraft DK, 100g balls 2
Cosy Wool or
Superwash 8ply

NEEDLES

A pair of 3.75mm knitting needles.
Wool needle for sewing up.

REQUIREMENTS

A pair of safety eyes, wobbly eyes or scraps of black yarn to embroider eyes.
Scraps of red yarn to embroider mouth.
Washable filling.

TENSION

23.5 sts and 32 rows to 10cm over stocking st, using 3.75mm needles.

NOTE

This Whale has been knitted on smaller needles and at a tighter tension than usually recommended.

BODY AND HEAD (beg at tail)

Using 3.75mm needles, cast on 72 sts.

Working in stocking st throughout, work 4 rows.

5th row: K2tog, K32, [K2tog] twice, K32,
K2tog ... 68 sts.

Work 3 rows.

9th row: K2tog, K30, [K2tog] twice, K30,
K2tog ... 64 sts.

Work 3 rows.

13th row: K2tog, K28, [K2tog] twice, K28,
K2tog ... 60 sts.

Work 3 rows.

17th row: K2tog, K26, [K2tog] twice, K26,
K2tog ... 56 sts.

Work 3 rows.

21st row: K2tog, K24, [K2tog] twice, K24,
K2tog ... 52 sts.

Work 3 rows.

25th row: K2tog, K22, [K2tog] twice, K22,
K2tog ... 48 sts.

26th and alt rows: Purl.

27th row: K2tog, K20, [K2tog] twice, K20,
K2tog ... 44 sts.

29th row: K2tog, K18, [K2tog] twice, K18,
K2tog ... 40 sts.

31st row: K2tog, K16, [K2tog] twice, K16,
K2tog ... 36 sts.

33rd row: K2tog, K14, [K2tog] twice, K14,
K2tog ... 32 sts.

35th row: K2tog, K12, [K2tog] twice, K12,
K2tog ... 28 sts.

37th row: K2tog, K10, [K2tog] twice, K10,
K2tog ... 24 sts.

39th row: K2tog, K8, [K2tog] twice, K8,
K2tog ... 20 sts.

Work 21 rows.

61st row: Inc in first st, K8, [inc once in next
st] twice, K8, inc in last st ... 24 sts.

Work 3 rows.

65th row: Inc in first st, K10, [inc once in next
st] twice, K10, inc in last st ... 28 sts.

Work 3 rows.

69th row: Inc in first st, K12, [inc once in next
st] twice, K12, inc in last st ... 32 sts.

Work 3 rows.

73rd row: Inc in first st, K14, [inc once in next
st] twice, K14, inc in last st ... 36 sts.

Work 3 rows.

77th row: Inc in first st, K16, [inc once in next
st] twice, K16, inc in last st ... 40 sts.

Work 3 rows.

81st row: Inc in first st, K18, [inc once in next
st] twice, K18, inc in last st ... 44 sts.

Cont inc in this manner in every 4th row until
there are 72 sts.

Work 3 rows.

113th row: K35, [inc once in next st] twice,
K35 ... 74 sts.

Work 3 rows.

117th row: K36, [inc once in next st] twice,
K36 ... 76 sts.

Work 3 rows.

121st row: K37, [inc once in next st] twice,
K37 ... 78 sts.

Work 3 rows.

125th row: K38, [inc once in next st] twice,
K38 ... 80 sts.

Work 3 rows.

129th row: K39, [inc once in next st] twice,
K39 ... 82 sts.

Cont inc in this manner in every 4th row until
there are 100 sts.

Work 49 rows.

215th row: K49, [inc once in next st] twice,
K49 ... 102 sts.

Work 3 rows.

219th row: K50, [inc once in next st] twice,
K50 ... 104 sts.

Work 3 rows.

223rd row: K2tog, K48, [K2tog] twice, K48,
K2tog ... 100 sts.

224th and alt rows: Purl.

225th row: K2tog, K46, [K2tog] twice, K46,
K2tog ... 96 sts.

227th row: K2tog, K44, [K2tog] twice, K44,
K2tog ... 92 sts.

229th row: K2tog, K42, [K2tog] twice, K42,
K2tog ... 88 sts.

231st row: K2tog, K40, [K2tog] twice, K40,
K2tog ... 84 sts.

233rd row: K2tog, K38, [K2tog] twice, K38,
K2tog ... 80 sts.

235th row: K2tog, K36, [K2tog] twice, K36,
K2tog ... 76 sts.

237th row: K2tog, K34, [K2tog] twice, K34,
K2tog ... 72 sts.

239th row: K2tog, K32, [K2tog] twice, K32,
K2tog ... 68 sts.

240th row: Purl.

Cast off.

FLIPPERS (make 2)

Using 3.75mm needles, cast on 26 sts.

Working in stocking st throughout, work 4 rows.

5th row: K2tog, K9, [K2tog] twice, K9, K2tog
... 22 sts.

Work 3 rows.

9th row: K2tog, K7, [K2tog] twice, K7, K2tog
... 18 sts.

Work 3 rows.

13th row: K2tog, K5, [K2tog] twice, K5,
K2tog ... 14 sts.

Work 3 rows.

17th row: K2tog, K3, [K2tog] twice, K3,
K2tog ... 10 sts.

Work 3 rows.

Dec one st at each end of next row, then every
alt row until 4 sts rem.

Break off yarn, run end through rem sts, draw up
tightly and fasten off securely.

FINISHING

Body and Head: Attach safety eyes, or
wobbly eyes, or if preferred embroider eyes using
black yarn. Using red yarn, embroider mouth.
Fold Body and Head in half and using mattress
st, sew seams, stuffing firmly as you go.

Flippers: Fold in half and using mattress st, sew
side seam, stuffing firmly as you go. Sew cast on
edge to side of Body.

Sew in all ends.



MEASUREMENTS

Diameter (approx) cm 18

YARN REQUIRED

Lincraft DK,
Cosy Wool or
Superwash 8ply 100g balls 1

NEEDLES

A pair of 3.75 knitting needles.
Wool needle for sewing up.

REQUIREMENTS

Washable filling.

TENSION

22.5 sts and 45 rows to 10cm over garter st,
using 3.75mm needles.

NOTE

This Sea Star has been knitted on smaller needles
and at a tighter tension than usually recommended.

SEA STAR (make 2)

Using 3.75mm needles, cast on 19 sts.

Knit 4 rows garter st.

5th row: Cast off 15 sts, knit to end.

6th row: K4, turn, cast on 15 sts ... 19 sts.

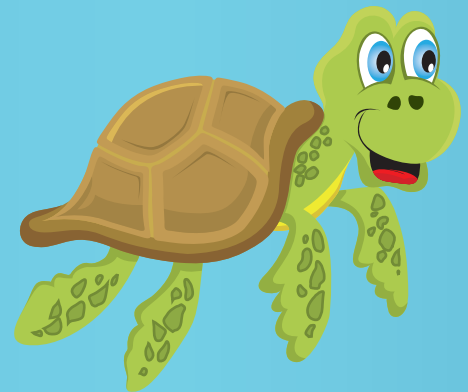
Rep last 6 rows 3 times.

Knit 4 rows garter st.

Cast off.

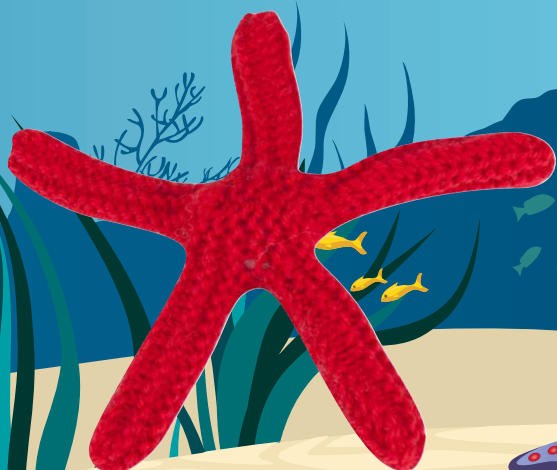
FINISHING

On each piece, bend the straight side edge around so
the cast on and cast off edges meet, then using a flat
seam, sew seam on top of body. Using a flat seam, sew
2 pieces tog, stuffing lightly as you go. Sew in all ends.



Sea Star

Easy Knit



MEASUREMENTS

Length (approx) cm 30

YARN REQUIRED

Lincraft DK,
Cosy Wool or
Superwash 8ply 100g balls 1

NEEDLES

A pair of 3.75mm knitting needles.
Wool needle for sewing up.

REQUIREMENTS

A pair of safety eyes, wobbly eyes or scraps of black yarn to embroider eyes.
Washable filling.

TENSION

23.5 sts and 32 rows to 10cm over stocking st, using 3.75mm needles.

NOTE

This Turtle has been knitted on smaller needles and at a tighter tension than usually recommended.

Turtle

Intermediate Knit



LOWER BODY (beg at rear)

Using 3.75mm needles, cast on 4 sts.

Work 2 rows stocking st.

Cont in stocking st and inc one st at each end of every row until there are 18 sts, then every alt row until there are 42 sts.

Work 7 rows.

Dec one st at each end of next row, then every 4th row until 30 sts rem, then every alt row until 16 sts rem, then in every row until 6 sts rem.

Cast off.

UPPER SHELL (beg at rear)

Using 3.75mm needles, cast on 4 sts.

1st row: K2, P1, K1.

2nd row: K1, P3.

3rd row: Inc in first st, K2, inc in last st ... 6 sts.

4th row: Inc in first st, K1, P3, inc in last st ... 8 sts.

5th row: Inc in first st, K3, P1, K2, inc in last st ... 10 sts.

6th row: Inc in first st, P4, K1, P3, inc in last st ... 12 sts.

7th row: Inc in first st, [K1, P1] twice, K6, inc in last st ... 14 sts.

8th row: Inc in first st, P8, K1, P3, inc in last st ... 16 sts.

9th row: Inc in first st, K3, [P1, K1] twice, K6, P1, inc in last st ... 18 sts.

10th row: P3, K1, P5, K1, P3, K1, P4.

11th row: Inc in first st, K2, P1, K5, P1, K3, P1, K3, inc in last st ... 20 sts.

12th row: P6, K1, P1, K1, P7, [K1, P1] twice.

13th row: Inc in first st, K1, P1, K9, P1, K6, inc in last st ... 22 sts.

14th row: [P7, K1, P1, K1] twice, P2.

15th row: Inc in first st, P1, K3, P1, K5, P1, K3, P1, K5, inc in last st ... 24 sts.

16th row: P2, K1, [P3, K1, P5, K1] twice, P1.

17th row: Inc in first st, [K7, P1, K1, P1] twice, K2, inc in last st ... 26 sts.

18th row: P5, K1, [P9, K1] twice.

Keeping diamond patt correct as placed, inc one st at each end of next row, then every alt row until there are 42 sts.

Work 7 rows.

Dec one st at each end of next row, then every 4th row until 30 sts rem, then every alt row until 16 sts rem, then in every row until 6 sts rem.

Cast off.

HEAD

Using 3.75mm needles, cast on 12 sts.

Working in stocking st throughout, work 2 rows.

3rd row: [K1, M1] 3 times, K5, [M1, K1] 3 times, K1 ... 18 sts.

Work 3 rows.

7th row: [K2, M1] 3 times, K5, [M1, K2]

3 times, K1 ... 24 sts.

8th and alt rows: Purl.

9th row: [K2tog, K7, K2tog, K1] twice ... 20 sts.

11th row: [K2tog, K5, K2tog, K1] twice ... 16 sts.

13th row: [K2tog, K3, K2tog, K1] twice ... 12 sts.

15th row: * K2tog, K1, rep from * to end ... 8 sts.

16th row: [P2tog] 4 times ... 4 sts.

Break off yarn, run end through rem sts, draw up tightly and fasten off securely.

FRONT FLIPPERS (make 2)

Using 3.75mm needles, cast on 14 sts.

Working in stocking st throughout, work 4 rows.

5th row: K6, [inc once in next st] twice, K6 ... 16 sts.

Work 3 rows.

9th row: K7, [inc once in next st] twice, K7 ... 18 sts.

Work 3 rows.

Dec one st at each end of next row, then every 4th row until 12 sts rem, then every alt row until 4 sts rem.

Break off yarn, run end through rem sts, draw up tightly and fasten off securely.

REAR FLIPPERS (make 2)

Using 3.75mm needles, cast on 18 sts.

Working in stocking st throughout, work 2 rows.

3rd row: Inc in first st, K7, [inc once in next st] twice, K7, inc in last st ... 22 sts.

Work 5 rows.

9th row: K2tog, K7, [K2tog] twice, K7, K2tog ... 18 sts.

Work 3 rows.

13th row: K2tog, K5, [K2tog] twice, K5, K2tog ... 14 sts.

Purl 1 row.

15th row: K2tog, K3, [K2tog] twice, K3, K2tog ... 10 sts.

Purl 1 row.

Cast off.

FINISHING

Lower Body and Upper Shell: Using mattress st, sew Lower Body and Upper Shell tog leaving cast off edges open. Stuff firmly.

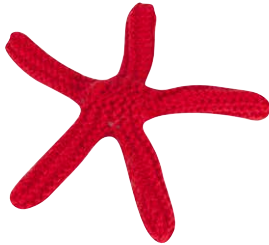
Head: Attach safety eyes, or wobbly eyes, or if preferred embroider eyes using black yarn. Sew side seam. Stuff firmly. Sew cast on edge to cast off edges of Lower Body and Upper Shell.

Front Flippers: Fold in half and using mattress st, sew side seam, stuffing firmly as you go. Sew cast on edge to front of Lower Body.

Rear Flippers: Fold in half and using mattress st, sew cast off edge and side seam, stuffing firmly as you go. Sew cast on edge to back of Lower Body.

Sew in all ends.

Lincraft



ABBREVIATIONS/ CONVERSIONS

alt: alternate
beg: beginning
cont: continue
cm: centimetre
dec: decrease
 foll: following
inc: increase
K: knit
mm: millimetre

M1: make one by picking up the loop between 2 stitches & knitting into the back of it (thereby increasing without using up a stitch).

P: purl
patt: pattern
pssso: pass slip stitch over
p2sso: pass the two slip stitches over

rem: remaining
rep: repeat
st/s: stitch/es
tbl: through back of loop
tog: together
ybk: yarn back
yfwd: yarn forward
yon: yarn over needle
yrn: yarn around needle

METRIC IMPERIAL US

2mm	14	0
2.25mm	13	1
2.5mm	12	-
2.75mm	12	2
3mm	11	3
3.25mm	10	3 & 4
3.5mm	9	-
3.75mm	9	5
4mm	8	6

METRIC IMPERIAL US

4.5mm	7	7
5mm	6	8
5.5mm	5	9
6mm	4	10
6.5mm	3	10.5
7mm	2	10.5
7.5mm	1	11
8mm	0	11
9mm	00	13



23399952

For your nearest store location or to shop online visit www.lincraft.com.au

Lincraft

Where ideas come to life.



FOR CUSTOMER ENQUIRIES PLEASE CALL 1300 LINCRAFT Things you should know: Unforeseen manufacturing, supplier delivery problems or unexpected demand may occasionally result in stock unavailability. We reserve the right to limit quantities. Prices do not include accessories. Reproduction of colours may not be accurate. Lines illustrated are representative of the range. Ranges, styles and colours may vary by store. Art/Design: kma20 03 9419 4235 © Copyright Lincraft Australia Pty Ltd 2013. © Copyright Lincraft New Zealand Pty Ltd 2013. KMA20/LIN2271