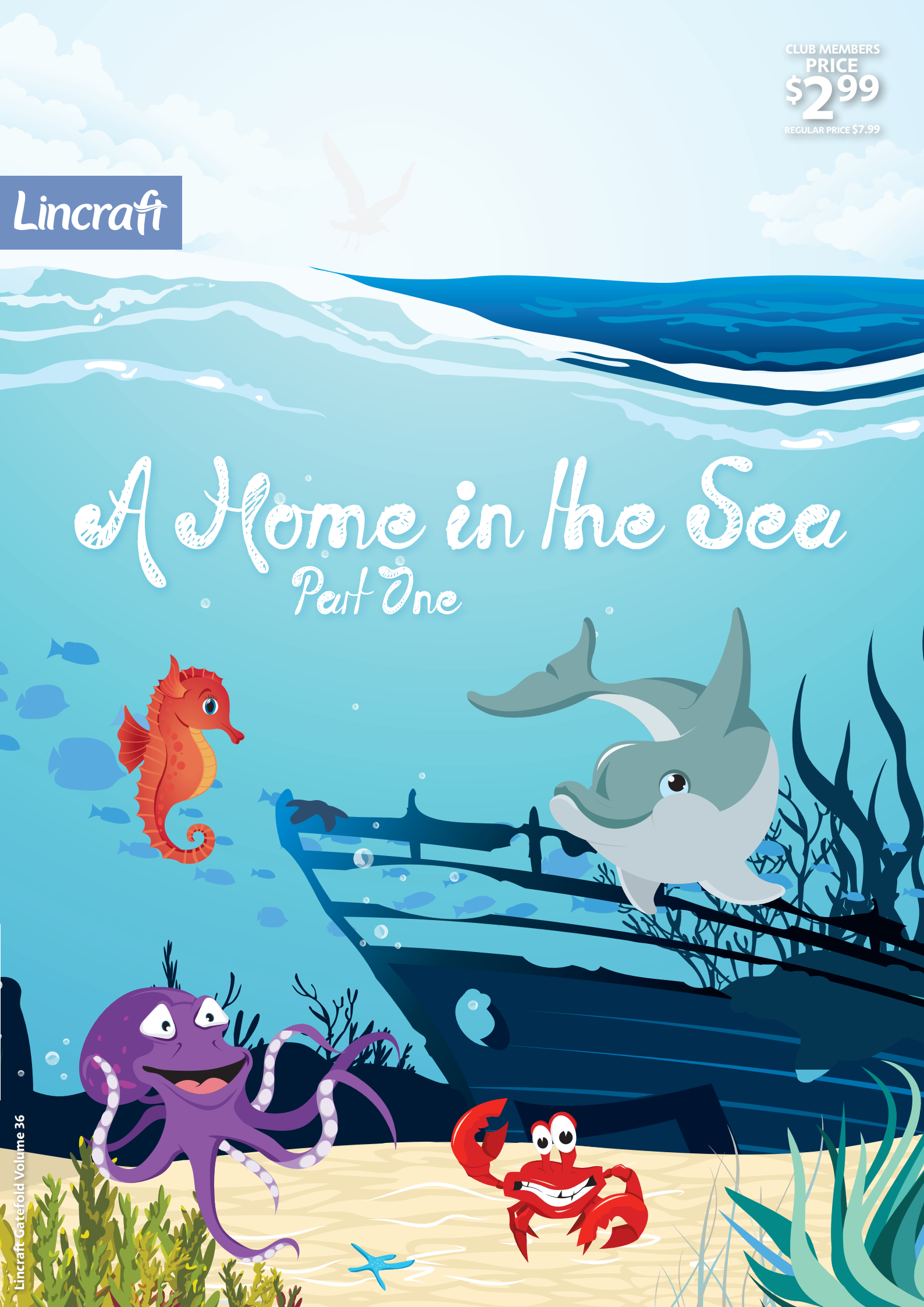


CLUB MEMBERS
PRICE
\$2.99
REGULAR PRICE \$7.99

Lincraft

A Home in the Sea

Part One



MEASUREMENTS

Height (approx,
with tail curled) cm 30

YARN REQUIRED

Lincraft DK,
Cosy Wool or
Superwash 8ply 100g balls 1

NEEDLES

A pair of 3.75mm knitting needles.
Wool needle for sewing up.

REQUIREMENTS

A pair of safety eyes, wobbly eyes or scraps
of black yarn to embroider eyes.
Washable filling.

TENSION

23.5 sts and 32 rows to 10cm over stocking st,
using 3.75mm needles.

NOTE

This Seahorse has been knitted on smaller needles
and at a tighter tension than usually recommended.

Seahorse

Easy Knit

BODY – SIDE 1

Using 3.75mm needles, cast on 4 sts.
Work 8 rows stocking st.
Cont in stocking st and inc one st at each end
of next row, then foll 10th row ... 8 sts.
Work 21 rows.
Inc one st at each end of next row, then every
8th row until there are 14 sts.
Work 3 rows. **
Next row: Inc in first st, knit to end ... 15 sts.
Purl 1 row.
Next row: K2tog, knit to end ... 14 sts.
Purl 1 row.
Next row: Knit to last st, inc in last st ... 15 sts.
Work 3 rows.
Next row: K2tog, knit to end ... 14 sts.
*** Work 5 rows.
Dec one st at each end of next row, then every
alt row until 8 sts rem.
Work 3 rows.

Shape Head:

Cast on 2 sts at beg of next 2 rows ... 12 sts.
Inc one st at each end of next row ... 14 sts.
Work 9 rows.
Dec one st at each end of next row, then every
alt row until 8 sts rem.
Purl 1 row.
Cast off.

BODY – SIDE 2

Work as for Body – Side 1 to **.
Next row: Knit to last st, inc in last st ... 15 sts.
Purl 1 row.
Next row: Knit to last 2 sts, K2tog ... 14 sts.
Purl 1 row.
Next row: Inc in first st, knit to end ... 15 sts.
Work 3 rows.
Next row: Knit to last 2 sts, K2tog ... 14 sts.
Work as for Body – Side 1 from *** to end.

HEAD GUSSET

Using 3.75mm needles, cast on 2 sts.
1st row: Inc once in each st ... 4 sts.
Work in stocking st, beg with a purl row, and inc one
st at each end of every alt row until there are 8 sts.
Work 23 rows.
Dec one st at each end of next row, then every
alt row until 2 sts rem.
Next row: P2tog and fasten off.

SNOUT

Using 3.75mm needles, cast on 3 sts.
Work 6 rows stocking st.
Cont in stocking st and inc one st at each end
of next row, then foll alt row ... 7 sts.
Work 3 rows.

Dec one st at each end of next row, then foll alt

row ... 3 sts.
Work 5 rows stocking st.
Cast off.

FINS (make 2)

Using 3.75mm needles, cast on 12 sts.
Work 2 rows stocking st.
Cont in stocking st and dec one st at each end
of next row, then every alt row until 4 sts rem.
Purl 1 row.
Cast off.

FINISHING

Body and Head: Using a flat seam, sew Head
Gusset in position between Body pieces, beg and
ending where sts were cast on for Head. Attach safety
eyes, or wobbly eyes, or if preferred embroider eyes
using black yarn. Using a flat seam, sew Body pieces
tog, stuffing firmly as you go. Bend tail inwards,
approx 9cm from the tip, and sew a few small sts to
hold it in position. Rep approx 2cm from the tail tip.
Snout: Fold Snout in half and using a flat seam, sew
side seams, leaving cast on and cast off edges open.
Stuff lightly then sew to Head.
Fins: Using a flat seam, sew Fins tog, leaving
cast off edges open. Stuff lightly then sew cast
off edges to back of Body.
Sew in all ends.



BODY (beg at top of head)

Using 3.75mm needles, cast on 13 sts.

Working in stocking st throughout, work 2 rows.

3rd row: K1, * M1, K1, rep from * to end ... 25 sts.

4th, 6th and 8th rows: Purl.

5th row: K1, * M1, K2, rep from * to end ... 37 sts.

7th row: K1, * M1, K3, rep from * to end ... 49 sts.

9th row: K1, * M1, K4, rep from * to end ... 61 sts.

Work 7 rows.

Beg Dec:

1st row: K18, K2tog, K21, K2tog, K18 ... 59 sts.

2nd and alt rows: Purl.

3rd row: K18, K2tog, K19, K2tog, K18 ... 57 sts.

5th row: K18, K2tog, K17, K2tog, K18 ... 55 sts.

7th row: K18, K2tog, K15, K2tog, K18 ... 53 sts.

9th row: K7, [K2tog, K7] 5 times, K1 ... 48 sts.

11th row: K7, [K2tog, K6] 5 times, K1 ... 43 sts.

13th row: K6, [K2tog, K5] 5 times, K2 ... 38 sts.

15th row: K6, [K2tog, K4] 5 times, K2 ... 33 sts.

16th row: Purl.

Cast off.

TENTACLES (make 8)

Using 3.75mm needles, cast on 12 sts.

Work in stocking st for 15cm, ending with a purl row.

Beg Shaping:

1st row: K5, K2tog, K5 ... 11 sts.

Work 3 rows.

5th row: K5, K2tog, K4 ... 10 sts.

Work 3 rows.

9th row: K4, K2tog, K4 ... 9 sts.

Work 3 rows.

13th row: K4, K2tog, K3 ... 8 sts.

Work 3 rows.

17th row: K2, [K2tog] twice, K2 ... 6 sts.

Break off yarn, run end through rem sts, draw up

tightly and fasten off securely.

FINISHING

Body: Attach safety eyes, or wobbly eyes, or if preferred embroider eyes using black yarn. Using red yarn, embroider mouth. Using mattress st, join seams, leaving a small opening for stuffing. Stuff firmly then close opening.

Tentacles: Using a flat seam, sew side seams, stuffing lightly as you go. Sew cast on edge of Tentacles to Body. Sew in all ends.

MEASUREMENTS

Height (approx)	cm	30
-----------------	----	----

YARN REQUIRED

Lincraft DK, Cosy Wool or Superwash 8ply	100g balls	1
--	------------	---

NEEDLES

A pair of 3.75mm knitting needles.

Wool needle for sewing up.

REQUIREMENTS

A pair of safety eyes, wobbly eyes or scraps of black yarn to embroider eyes.

Scraps of red yarn to embroider mouth.

Washable filling.

TENSION

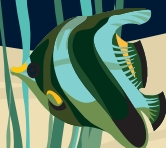
23.5 sts and 32 rows to 10cm over stocking st, using 3.75mm needles.

NOTE

This Octopus has been knitted on smaller needles and at a tighter tension than usually recommended.

Octopus

Easy Knit



BODY AND HEAD (beg at tail)

Using 3.75mm needles, cast on 24 sts.

Work 4 rows stocking st.

5th row: K2tog, K8, [K2tog] twice, K8, K2tog ... 20 sts.

6th, 8th and 10th rows: Purl.

7th row: K2tog, K6, [K2tog] twice, K6, K2tog ... 16 sts.

9th row: K2tog, K4, [K2tog] twice, K4, K2tog ... 12 sts.

11th row: K2tog, K2, [K2tog] twice, K2, K2tog ... 8 sts.

12th row: [P2tog] 4 times ... 4 sts.

Work 2 rows.

15th row: Inc once in each st ... 8 sts.

16th row: P3, [inc once in next st] twice, P3 ... 10 sts.

17th row: Inc in first st, K3, [inc once in next st] twice, K3, inc in last st ... 14 sts.

18th row: P6, [inc once in next st] twice, P6 ... 16 sts.

19th row: Inc in first st, K6, [inc once in next st] twice, K6, inc in last st ... 20 sts.

20th row: P9, [inc once in next st] twice, P9 ... 22 sts.

21st row: K10, [inc once in next st] twice, K10 ... 24 sts.

22nd and alt rows: Purl.

23rd row: Inc in first st, K10, [inc once in next st] twice, K10, inc in last st ... 28 sts.

25th row: K13, [inc once in next st] twice, K13 ... 30 sts.

27th row: Inc in first st, K13, [inc once in next st] twice, K13, inc in last st ... 34 sts.

29th row: K16, [inc once in next st] twice, K16 ... 36 sts.

31st row: Inc in first st, K16, [inc once in next st] twice, K16, inc in last st ... 40 sts.

33rd row: K19, [inc once in next st] twice, K19 ... 42 sts.

35th row: Inc in first st, K19, [inc once in next st] twice, K19, inc in last st ... 46 sts.

37th row: K22, [inc once in next st] twice, K22 ... 48 sts.

39th row: K23, [inc once in next st] twice, K23 ... 50 sts.

41st row: Inc in first st, K23, [inc once in next st] twice, K23, inc in last st ... 54 sts.

Work 9 rows.

51st row: Inc in first st, K25, [inc once in next st] twice, K25, inc in last st ... 58 sts.

Work 9 rows.

61st row: K28, [inc once in next st] twice, K28 ... 60 sts.

Work 12 rows.

74th row: P28, [P2tog] twice, P28 ... 58 sts. Knit 1 row.

76th row: P2tog, P54, P2tog ... 56 sts. Work 4 rows.

81st row: K26, [K2tog] twice, K26 ... 54 sts. Work 3 rows.

85th row: K25, [K2tog] twice, K25 ... 52 sts.

86th row: P2tog, P48, P2tog ... 50 sts.

Work 2 rows.

89th row: K23, [K2tog] twice, K23 ... 48 sts. Purl 1 row.

91st row: K22, [K2tog] twice, K22 ... 46 sts. Purl 1 row.

93rd row: K21, [K2tog] twice, K21 ... 44 sts. Purl 1 row.

95th row: K20, [K2tog] twice, K20 ... 42 sts.

96th row: P2tog, P38, P2tog ... 40 sts.

97th row: K18, [K2tog] twice, K18 ... 38 sts. Purl 1 row.

99th row: K17, [K2tog] twice, K17 ... 36 sts. Purl 1 row.

101st row: K16, [K2tog] twice, K16 ... 34 sts.

102nd row: P2tog, P30, P2tog ... 32 sts.

103rd row: K14, [K2tog] twice, K14 ... 30 sts.

104th row: P13, [P2tog] twice, P13 ... 28 sts.

105th row: K2tog, K10, [K2tog] twice, K10, K2tog ... 24 sts.

106th row: P2tog, P8, [P2tog] twice, P8, P2tog ... 20 sts.

107th row: K2tog, K6, [K2tog] twice, K6, K2tog ... 16 sts.

108th row: [P2tog] 8 times ... 8 sts. Knit 1 row.

110th row: [P2tog] 4 times ... 4 sts. Work 4 rows.

Cast off.

FLIPPERS (make 2)

Using 3.75mm needles, cast on 12 sts.

Work 4 rows stocking st.

Cont in stocking st and inc one st at each end of next row, then every alt row until there are 18 sts.

Purl 1 row.

Dec one st at each end of next row, then every alt row until 10 sts rem, then in every row until 4 sts rem.

Cast off.

DORSAL FIN

Using 3.75mm needles, cast on 18 sts.

Work 2 rows stocking st.

Cont in stocking st and dec one st at each end of next row, then every alt row until 12 sts rem, then in every row until 2 sts rem.

Next row: K2tog and fasten off.

FINISHING

Body and Head: Attach safety eyes, or wobbly eyes, or if preferred embroider eyes using black yarn. Fold Body and Head in half and using mattress st, sew seams, leaving a small opening for stuffing. Stuff firmly then close opening.

Flippers: Fold Flipper in half lengthwise and using mattress st, sew seams, leaving cast on edge open. Stuff lightly then sew cast on edge to side of Body.

Dorsal Fin: Fold Dorsal Fin in half lengthwise and using a flat seam, sew seams, leaving cast on edge open. Stuff lightly then sew cast on edge to top of Body.

Sew in all ends.

MEASUREMENTS

Length (approx)	cm	40
-----------------	----	----

YARN REQUIRED

Lincraft DK, Cosy Wool or Superwash 8ply	100g balls	1
--	------------	---

NEEDLES

A pair of 3.75mm knitting needles.
Wool needle for sewing up.

REQUIREMENTS

A pair of safety eyes, wobbly eyes or scraps of black yarn to embroider eyes.
Washable filling.

TENSION

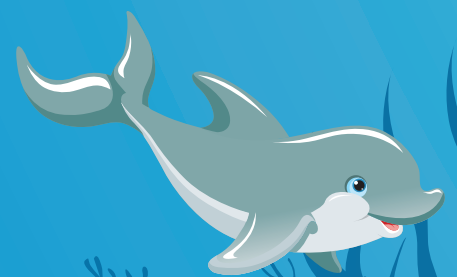
23.5 sts and 32 rows to 10cm over stocking st, using 3.75mm needles.

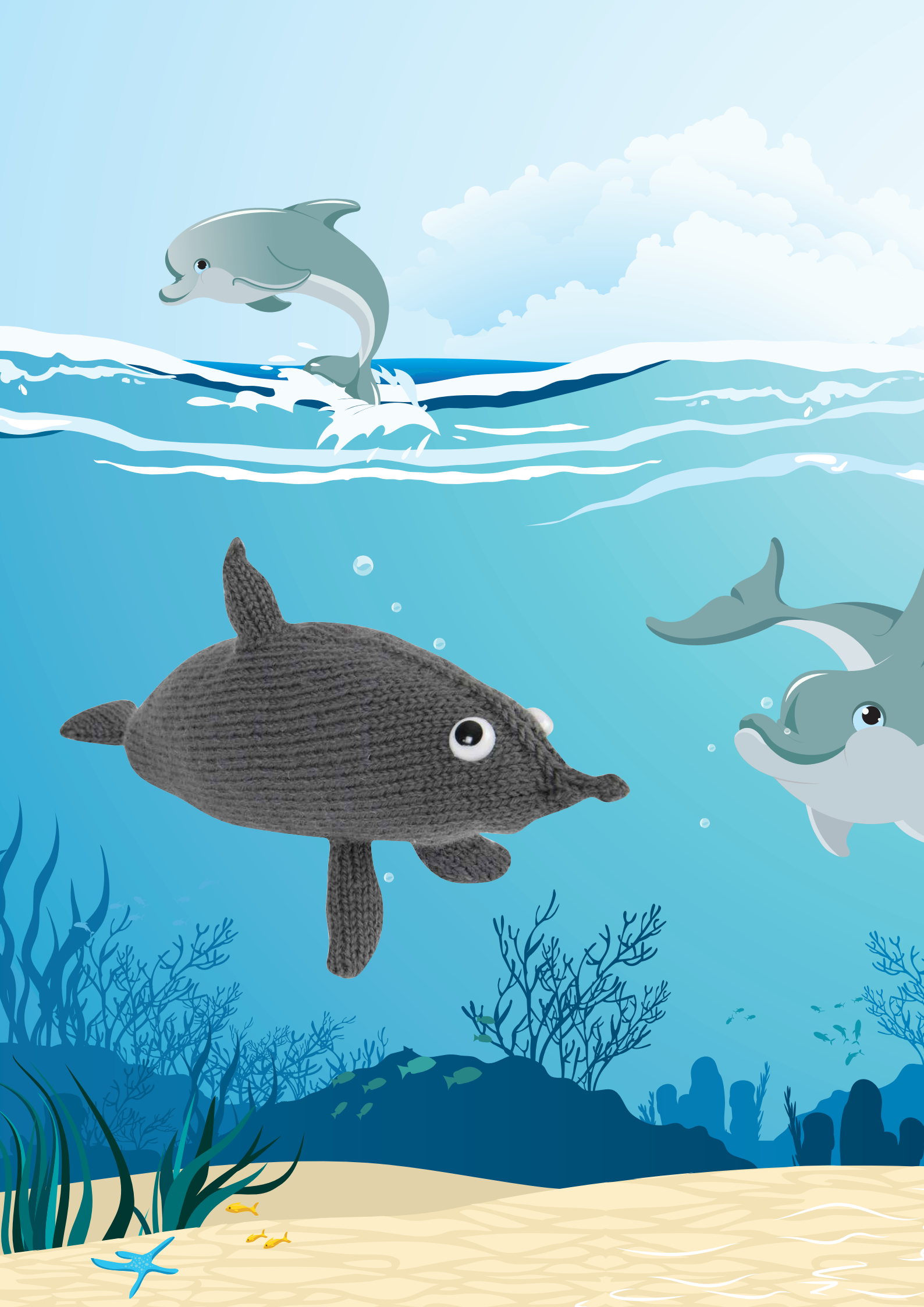
NOTE

This Dolphin has been knitted on smaller needles and at a tighter tension than usually recommended.

Dolphin

Easy Knit





MEASUREMENTS

Diameter (approx) cm 30

YARN REQUIRED

Lincraft DK,
Cosy Wool or
Superwash 8ply 100g balls 1

NEEDLES

A pair of 3.75mm knitting needles.
Wool needle for sewing up.

REQUIREMENTS

A pair of safety eyes, wobbly eyes or scraps of black yarn to embroider eyes.
Washable filling.

TENSION

23.5 sts and 32 rows to 10cm over stocking st, using 3.75mm needles.

NOTE

This Crab has been knitted on smaller needles and at a tighter tension than usually recommended.

BODY (make 2)

Using 3.75mm needles, cast on 10 sts.

Work 2 rows stocking st.

Cont in stocking st and inc one st at each end of every row until there are 20 sts, then every alt row until there are 34 sts.

Work 3 rows.

Dec one st at each end of next row, then every alt row until 12 sts rem.

Dec one st at each end of next row ... 10 sts.

Cast off.

FACE

Using 3.75mm needles, cast on 4 sts.

Working in stocking st, inc one st at each end of next 3 rows ... 10 sts.

Work 3 rows.

Dec one st at each end of next row ... 8 sts.

Purl 1 row.

Cast off.

LEGS (make 8)

Using 3.75mm needles, cast on 10 sts.

Work 14 rows stocking st.

Dec one st at each end of next row ... 8 sts.

Work 3 rows.

Rep last 4 rows twice ... 4 sts.

Break off yarn, run end through rem sts, draw up tightly and fasten off securely.

FRONT LEGS AND CLAWS (make 4)

Using 3.75mm needles, cast on 6 sts.

Work 10 rows stocking st.

Cont in stocking st and inc one st at each end of next row, then every alt row until there are 12 sts.

Purl 1 row.

Next row: K6, turn.

Cont on these 6 sts.

** Work 3 rows.

Dec one st at each end of next row.

Rep last 4 rows once.

Purl 1 row.

K2tog and fasten off. **

With right side facing, join yarn to rem 6 sts and knit to end.

Rep from ** to **.

FINISHING

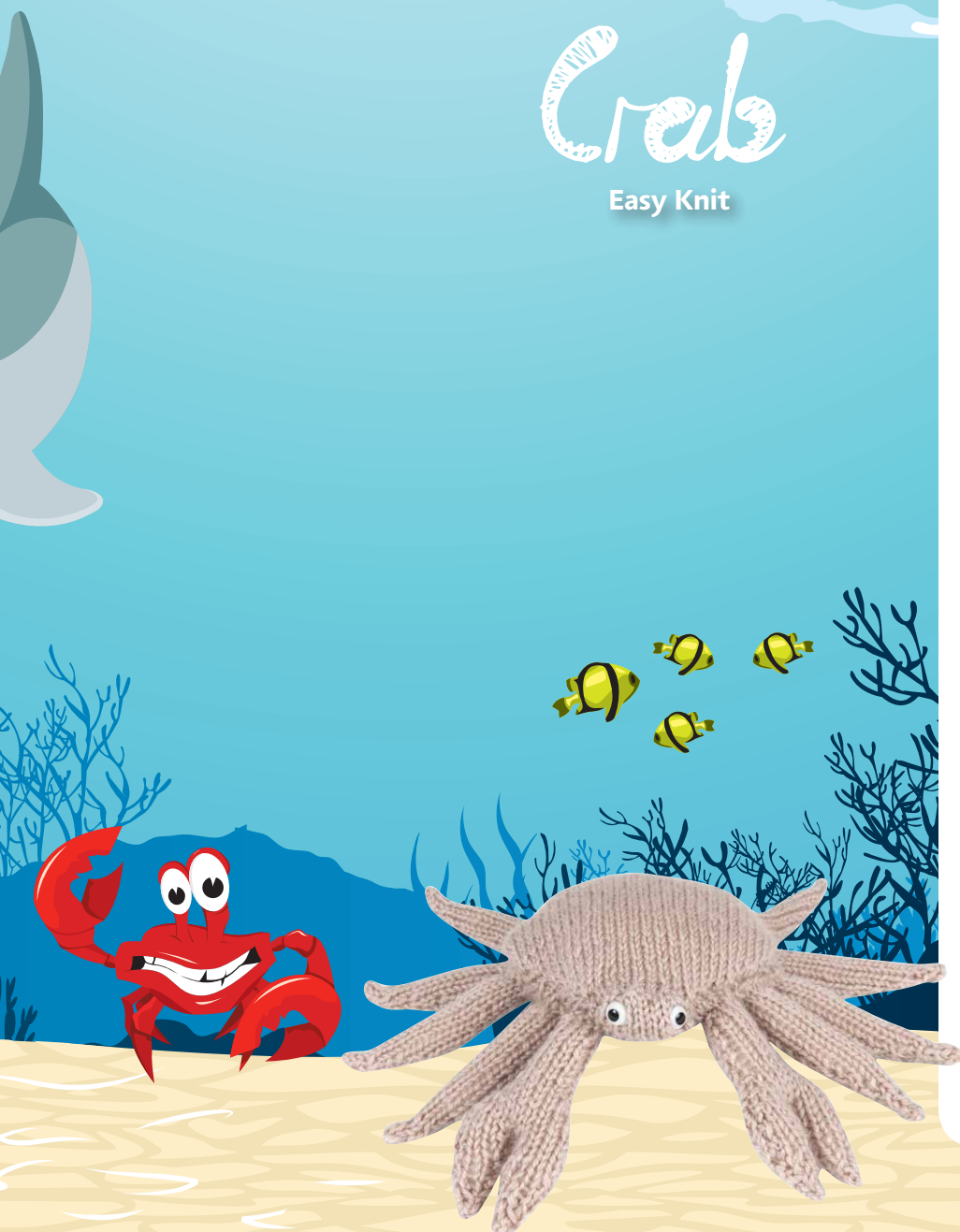
Body and Face: Using mattress st, sew Body pieces tog leaving cast on edges open. Sew cast off edge of Face to cast on edge of Lower Body. Attach safety eyes, or wobbly eyes, or if preferred embroider eyes using black yarn. Stuff Body firmly then sew rem of Face in position.

Legs: Using a flat seam, sew side seams, stuffing lightly as you go. Sew cast on edge to Lower Body, placing 4 Legs on each side.

Front Legs And Claws: Using a flat seam, sew 2 pieces tog, leaving cast on edges open. Stuff lightly. Rep for rem 2 pieces. Sew cast on edges to Lower Body, on either side of Face. Sew in all ends.

Crab

Easy Knit



Lincraft



ABBREVIATIONS/ CONVERSIONS

alt: alternate
beg: beginning
cont: continue
cm: centimetre
dec: decrease
foll: following
inc: increase
K: knit
mm: millimetre

M1: make one by picking up the loop between 2 stitches & knitting into the back of it (thereby increasing without using up a stitch).

P: purl
patt: pattern
pssso: pass slip stitch over
p2sso: pass the two slip stitches over

rem: remaining
rep: repeat
st/s: stitch/es
tbl: through back of loop
tog: together
ybk: yarn back
yfwd: yarn forward
yon: yarn over needle
yrn: yarn around needle

METRIC IMPERIAL US

2mm	14	0
2.25mm	13	1
2.5mm	12	-
2.75mm	12	2
3mm	11	3
3.25mm	10	3 & 4
3.5mm	9	-
3.75mm	9	5
4mm	8	6

METRIC IMPERIAL US

4.5mm	7	7
5mm	6	8
5.5mm	5	9
6mm	4	10
6.5mm	3	10.5
7mm	2	10.5
7.5mm	1	11
8mm	0	11
9mm	00	13



23399945

For your nearest store location or to shop online visit www.lincraft.com.au

Lincraft

Where ideas come to life.



FOR CUSTOMER ENQUIRIES PLEASE CALL 1300 LINCRAFT Things you should know: Unforeseen manufacturing, supplier delivery problems or unexpected demand may occasionally result in stock unavailability. We reserve the right to limit quantities. Prices do not include accessories. Reproduction of colours may not be accurate. Lines illustrated are representative of the range. Ranges, styles and colours may vary by store. Art/Design: kma20 03 9419 4235 © Copyright Lincraft Australia Pty Ltd 2013. © Copyright Lincraft New Zealand Pty Ltd 2013. KMA20/LIN2271