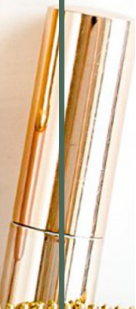


Lincraft

Inspiring Creativity



#C012

Sniffle Monster
Tissue Pouch

INTERMEDIATE

DIFFICULTY ●●●

Approximate Time of Project: 60 minutes

MATERIALS

1 piece 15cm x 18cm Fat Quarter
1 piece 15cm x 18cm Orange Lining
Sullivans natural trim 2 pieces of 15cm
Sully Joggle eyes 20mm x 2
Orange thread

EQUIPMENT

Sewing Machine
Scissors
Pins
Iron/Ironing Board

STEPS

1. Lay fabric right side facing up and align natural trim along the shortest end of the fabric. Sew at the edge of the natural trim.
2. Lay lining right side down on top of the natural trim. Flip it over and use the line as a guide to sew along side it to go through the centre of the natural trim.
3. Open and press with an iron. Repeat step 1 and 2 on the other side.
4. Turn right sides together and sew along the side seams and leave a 10cm gap. Trim corners. Turn right sides out and poke out corners.
5. Fold raw edge in. Fold it in half, right side facing up and mark the centre points with pins. Fold the top and the bottom to meet in the centre and pin together.
6. Sew both the short ends and turn right side out. Stick joggle eyes and fill it with a pack of pocket size tissues.

