

# Lincraft



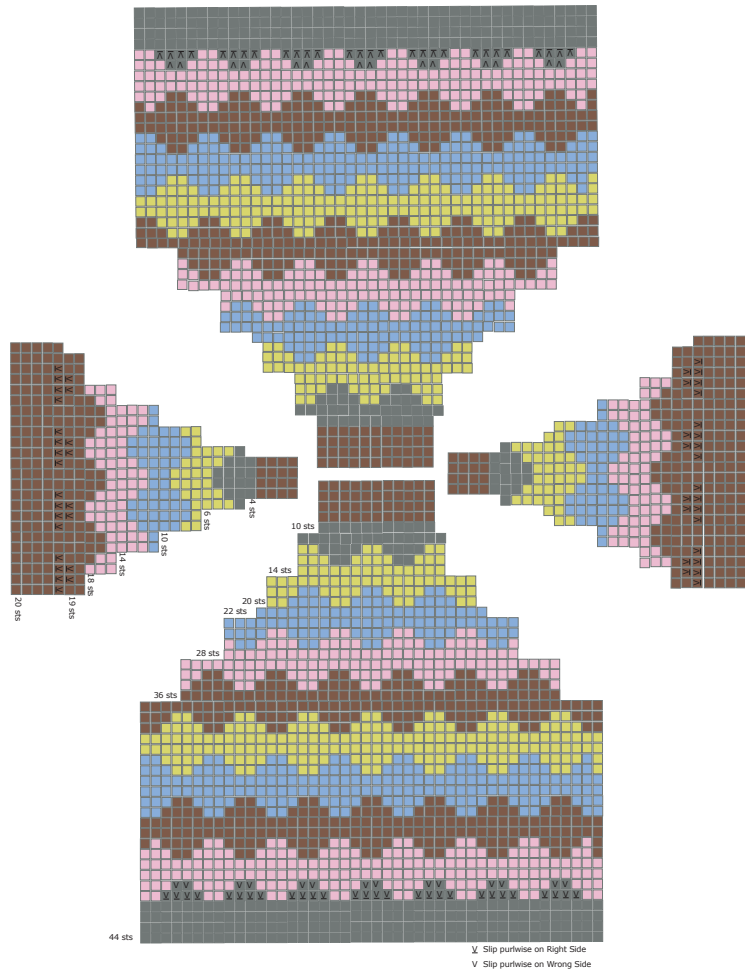
#P392

MAKR  
FUZZY YARN

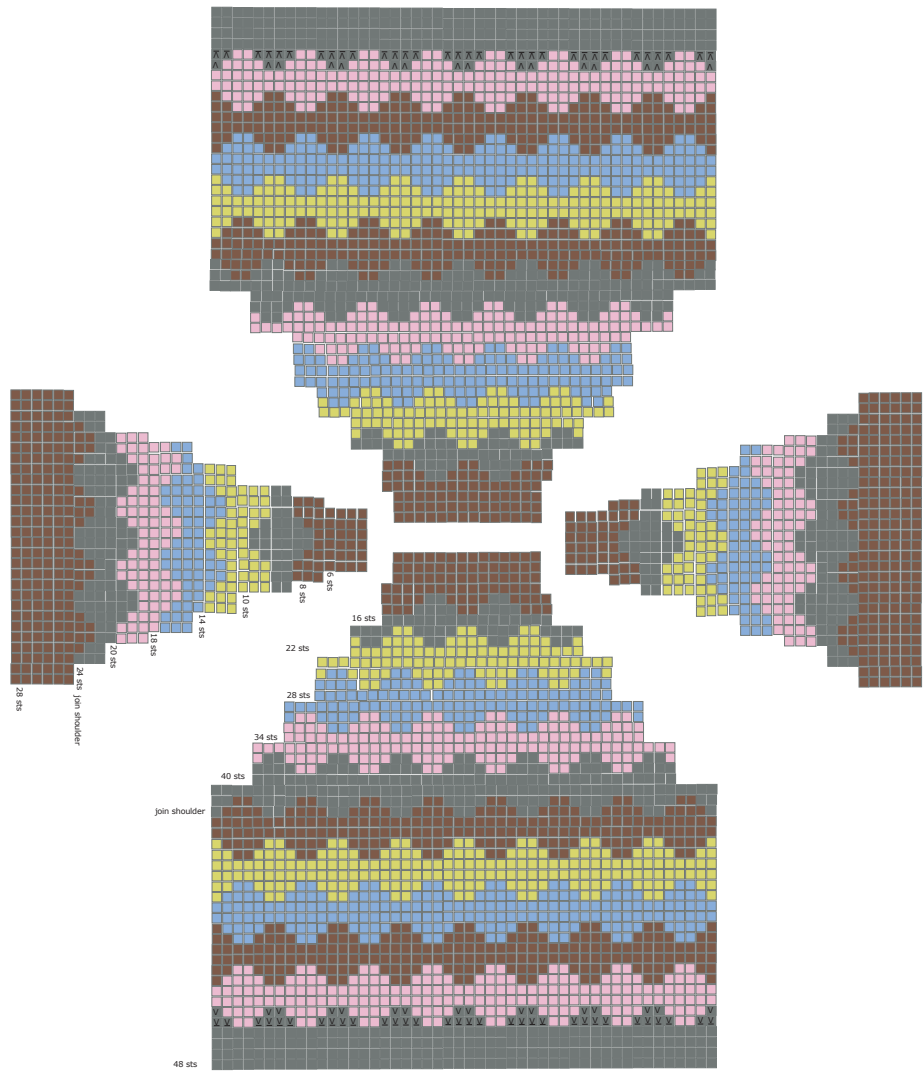
Bubble Sweater

INTERMEDIATE KNIT

SIZE SMALL



SIZE MEDIUM



This fashionable Bubble Look Knit Stitch Pattern makes a colourful three-dimensional textured cap-sleeve sweater. Knitted from the bottom up, the fronts and backs are worked separately, as are the sleeve hems, which are then all joined with a circular needle to knit the yoke and neckline. Knitted loosely so the sweater is soft and squishy in our chunky and plush accented Fuzzy Yarn, this is quick pattern to knit up, and our colour stitch chart provides extra guidance.

## MEASUREMENTS

	XS/S	M/L
Chest Width	50cm	60cm
Body Length	45cm	55cm

## YARN REQUIRED

### Makr FUZZY YARN Yarn 200g balls

C1 Silver	1	2
C2 Sweet Pink	1	2
C3 Nutshell	2	2
C4 Elemental Blue	1	2
C5 Cyber Lime	1	2

NOTE: This pattern is written in British English. All measurements in charts and instructions are in cm. For conversion from centimetres to inches please divide by 2.5cm. Please be aware that there are different terms for crocheting and knitting in American and British English, if in doubt, we've included a list of common abbreviations.

Please use only the yarn specified. Another yarn is likely to yield different results. Quantities are approximate as knitting styles may vary between knitters. Check the ball bands to ensure all yarn is from the same dye lot.

## DIFFICULTY ●●●

### NEEDLES AND EQUIPMENT:

10mm straight knitting needles for the hems  
 15mm straight knitting needles body  
 15mm circular knitting needles for the yoke and neckline  
 Wool needle for darning in ends  
 Removable Stitch Markers x 5  
 Stitch Holder

### TENSION:

15mm: 7sts x 8rows = 10cm x 10cm stst.

### KNITTING ABBREVIATION:

C colour  
 K knit  
 K2tog knit 2 stitches together  
 Mm millimetres  
 P purl  
 Pm place marker  
 Pw purlwise  
 Sl slip  
 St(s) stitch(es)  
 Stst stocking stitch (alternatively knit 1 row, purl 1 row)

## BUBBLE SWEATER PATTERN SIZE XS/S

### FRONT & BACK

WORK BOTH FRONT & BACK THE SAME.

Using 10mm needles, cast on 44 sts with C1.  
 Work 4 rows stst.

Change to 15mm needles and C2:

Row 1: K2, \*sl 4ts pw, K2\*, repeat \* to \*, to end.  
 Row 2: p3, \*sl 2 sts, P4\*, repeat \* to \*, finishing row with, sl2 sts, P3.  
 Row 3. K row.  
 Row 4. P row.

Change to C3:

Row 5: k1, sl 2 sts, \*k2, sl 4 sts\*, repeat \* to \*, finish row with K2, sl 2 sts, k1.  
 Row 6: p1, sl 1 st, \*p4, sl 2 sts, \* repeat \* to \*, finish row with P4, sl 1 st, p1.  
 Row 7. K row.  
 Row 8. P row.

Change to C4:

Row 9-12: Same as rows 1 – 4.

Change to C5:

Row 13-16: Same as rows 5 - 8.

Put stitches on holder.

Work the FRONT the same as the back.

## SLEEVES

WORK BOTH SLEEVES THE SAME:

Cast on 24 sts with C1 and 10mm needles.

Work 3 rows stst.

Change to 15mm needle, and p row.

Put on holder.

## YOKE

Making sure all sts are right side facing;

Transfer sts from FRONT onto circular 15mm needles, (44 sts)

Transfer SLEEVE sts onto same needles, (+24 sts)

Transfer sts from BACK onto same needles, (+44 sts)

Transfer SLEEVE sts onto same needles. (+24 sts)

Total 136 sts.

Round 1. Place Marker

K2, \*sl 4st pw, K2\*, 7 times, k2, pm, (44 sts)

\*sl 4st pw, K2\*, 4 times, pm, (24 sts)

K2, \*sl 4st pw, K2\*, 7 times, k2, pm, (44 sts)

\*K2, sl 4 st pw\* 4 times, pm. (24 sts)

Round 2. K3, \*sl 2 sts, K4\*, 6 times, k3, pm, (44 sts)

K1, \*sl 2 sts, K4\*, 3 times, sl2, k1, k2tog, pm, (23 sts)

K3, \*sl 2 sts, K4\*, 6 times, sl2, k3, pm, (44 sts)

K1, k2tog, \*sl 2 sts, K4\*, 3 times, sl2, k1, pm. (23 sts)

Round 3: k 44 sts, pm, k23 sts, pm, k44 sts pm, k 23sts pm.  
(134 sts)

## YOKE SHAPING:

Round 4: \*K2tog, k4\*, 7 times, k2tog, pm, (36sts)

\*K2tog, k 4\*, 4 times, k3, pm, (19sts)

\*K2tog, k4\*, 7 times, k2tog, pm, (36sts)

\*K2tog, k 4\*, 4 times, k3, pm. (19sts)

Change to C2

K1, \*sl 4, k2\* 5 times, sl 4, k1, pm, (36 sts)

K2tog, \*sl4, k2\* 2 times, sl4, k1, pm, (18 sts)

K1, \*sl 4, k2\* 5 times, sl4, k1, pm, (36 sts)

K2tog, \*sl4, k2\* 2 times, sl 4, k1, pm. (18 sts)

(126 sts total)

Next Round:

K2, \*sl2, k4\* 5 times, sl2, k2, pm, (36 sts)

K2, \*sl2, k4\* 2 times, sl2, k2, pm, (18 sts)

K2, \*sl2, k4\* 5 times, sl2, k2, pm, (36 sts)

K2, \*sl2, k4\* 2 times, sl2, k2, pm. (18 sts)

Next Round:

K36 sts pm, k18 sts pm, k36 sts pm, k18 sts pm.

Next Round:

\*k2tog, k3\* 6 times, k2tog, k3, k2tog, pm,(28sts)

\*k2tog, k4\* 2 times, k3, k2tog, pm, (14 sts)

\*k2tog, k3\* 6 times, k2tog, k3, k2tog, pm,(28sts)

\*k2tog, k4\* 2 times, k3, k2tog, pm. (14 sts)

(84 sts total)

Change to C4:

Next Round:

Sl1, \*k2, sl4\* 4 times, k2, sl1, pm,

Sl3, \*k2, sl4\*, k2, sl3, pm,

Sl1, \*k2, sl4\* 4 times, k2, sl1, pm,

Sl3, \*k2, sl4\*, k2, sl3, pm.

Next Round:

\*K4, sl2\* 4 times, k4, pm,

\*sl2, k4\* 2 times, k2, pm,

\*K4, sl2\* 4 times, k4, pm,

\*sl2, k4\* 2 times, k2, pm.

Next Round:

\*K2tog, k3\* 5 times, k1, k2tog (22 sts)

\*K2tog, k3\* 2 times, k2tog, k1, k2tog (10 sts)

\*K2tog, k3\* 5 times, k1, k2tog (22 sts)

\*K2tog, k3\* 2 times, k2tog, k1, k2tog (10 sts)

(64 sts total)

Change to C5:

Next Round:

K2tog, k1, \*sl4, k2\* 2 times, sl4, k1, k2tog, pm, (20 sts)

Sl4, k2, sl4, pm, (10 sts)

K2tog, k1, \*sl4, k2\* 2 times, sl4, k1, k2tog, pm, (20 sts)

Sl2, k2, sl4, pm. (10 sts)

(60 sts total)

Next Round:

K3, sl2, \*k4, sl2\* 2 times, k3, pm,

K1, sl2, k4, sl2, k1, pm,

K3, sl2 \*k4, sl2\* 2 times, k3, pm

K1, sl2, k4, sl2, k1, pm.

Next Round:

K20 pm, k10 pm, k20 pm, k10 pm.

Next Round:

K2tog, \*k2tog, k3\* 2 times, k2tog, k2, k2tog, k2tog, pm, (14 sts)

K2tog, k2tog, k4, k2tog, k2tog, pm, (6 sts)

K2tog, \*k2tog, k3\* 2 times, k2tog, k2, k2tog, k2tog, pm, (14 sts)

K2tog, k2tog, k4, k2tog, k2tog, pm. (6 sts)

(40 sts total)

Change to Grey

Next Round:

Sl3, k2, sl4, k2, sl3, pm,

Sl2, k2, sl2, pm,

Sl3, k2, sl4, k2, sl3, pm,

Sl2, k2, sl2, pm.

Next Round:

\*Sl2, k4\*, 2 times, sl2, pm,

Sl1, k4, sl1, pm,

\*Sl2, k4\*, 2 times, sl2, pm,

Sl1, k4, sl1, pm.

Next Round;

K14sts pm, k6 sts pm, k14 sts, pm, k6 sts pm.

(40 sts)

Next Round

\*K2tog, k4\* 2 times, k2tog, (10 sts)

\*k2tog, k4, k2tog, (4 sts)

\*K2tog, k4\* 2 times, k2tog,(10 sts)

\*k2tog, k4, k2tog.(4 sts)

(28 sts)

Neck Band

Change to C3 Brown:

Knit 4 rows (28sts) to last marker.

Cast off loosely.

## BUBBLE SWEATER PATTERN SIZE M/L

### FRONT & BACK

WORK BOTH FRONT & BACK THE SAME.

Using 10mm needles, cast on 48 sts with C1.  
Work 4 rows stst.

Change to 15mm needles and C2:

Row 1: Sl 2, \*k2, \*sl 4ts purlwise, K2\* 7 times, k2, sl2.

Row 2: sl1, \*p4 sl2\* 7 times, p4, sl1.

Row 3: K row

Row 4: P row.

Change to C3:

Row 5: k1, \*sl4 sts, k2\*, 7 times, sl4, k1.

Row 6: p2, \*sl2, p4\*, sl2, p2.

Row 7: K row.

Row 8: P row.

Change to C4:

Same as rows 1-4.

Change to C5:

Same as rows 5-8.

Change to C3:

Same as rows 1-4.

Put Stitches on holder.

### SLEEVES

WORK BOTH SLEEVES THE SAME:

Cast on 24 sts with C3 and 10mm needles.

Work 3 rows stst.

Change to 15mm needle, and p row.

Put sts on holder.

### YOKE

Making sure all sts are right side facing;

Transfer sts from FRONT onto circular 15mm needles, (48 sts)

Transfer SLEEVE sts onto same needles, (+28 sts)

Transfer sts from BACK onto same needles, (+48 sts)

Transfer SLEEVE sts onto same needles. (+28 sts)

Total 152 sts.

### YOKE SHAPING:

Round 1. K1, \*sl 4st pw, K2\*, 7 times, sl4, k2, pm, (48 sts)  
K3tog, \*sl 4st pw, K2\*, 3 times, sl4, k3tog, pm, (24 sts)  
K1, \*sl 4st pw, K2\*, 7 times, sl4, k2, pm, (48 sts)  
K3tog, \*sl 4st pw, K2\*, 3 times, sl4, k3tog, pm, (24 sts)  
(144 sts total)

Round 2. K2, \*slip 2 sts, K4\* 7 times, sl2, k2, pm, (48 sts)  
K2, sl2, \*k4, sl2\* 3 times, sl2, k2, pm, (24 sts)  
K2, \*slip 2 sts, K4\* 7 times, sl2, k2, pm, (48 sts)  
K2, sl2, \*k4, sl2\* 3 times, sl2, k2, pm (24 sts)

Round 3: k 48 sts, pm, k24 sts, pm, k48 sts pm, k 24sts pm.  
(144 sts)

Round 4: \*k2tog, k5\* 6 times, k2, k2tog, pm, (40 sts)  
\*K2tog, k7\* 2 times, k3, k2tog, pm, (20 sts)  
\*k2tog, k5\* 6 times, k2, k2tog, pm, (40 sts)  
\*K2tog, k7\* 2 times, k3, k2tog, pm. (20 sts)  
(120 sts total)

Change to C2:

Next Round:

\*sl4, k2\*, 6 times, sl4. pm,

\*k2, sl4\*, 3 times, k2, pm,

\*sl4, k2\*, 6 times, sl4. pm,

\*k2, sl4\*, 3 times, k2, pm.

Next Round:

k1, \*sl2, k4\* 6 times, , sl2, k1, pm,

K3, \*sl2, k4\* 2 times, sl2, k3, pm,

k1, \*sl2, k4\* 6 times, , sl2, k1, pm,

K3, \*sl2, k4\* 2 times, sl2, k3, pm.

Next Round:

k40 sts pm, k20 sts pm, k40 sts pm, k20 sts pm.

Next Round:

\*K2tog, k7\* 4 times, k2tog, k1, k2tog, pm (34 sts)

\*k2tog, k14, k2tog, pm (18 sts)

\*k2tog, k2tog, k3, \*k2tog k5\* 4 times, k2tog,  
k2og(32 sts)

\*k2tog, k14, k2tog, pm (18 sts)

(102 sts total)

Change to C4:

Next Round:

\*sl4, k2\* 5 times, sl4, pm,

\*k2, sl4\* 3 times, pm,

\*k2, sl4\* 5 times, sl2, pm,

\*sl4, k2\* 3 times, pm.

Next Round:

k1, sl2, \*k4, sl2\* 4 times, k4, sl2, k1, pm,

K3, \*sl2, k4\* 2 times, sl2, k1, pm,

K3, \*sl2, k4\* 4 times, sl2, k3, pm,

K1, sl2, \*k4, sl2\* 2 times, sl2, k3, pm.

Next Round:

k34 pm, k18 pm, k32 pm, k18 pm. (102 sts)

Next Round:

k2tog, k2tog, \*k5, k2tog\* 4 times, k2tog, pm,  
(28sts)

K2tog, k2tog, k6, k2tog, k2tog, pm, (14sts)

K2tog, k2tog, k24, k2tog, k2tog, pm, (28 st)

K2tog, k2tog, k6, k2tog, k2tog, pm. (14sts)

Change to C5:

Next Round:

\*Sl4, k2\* 4 times, sl 4 pm,

\*k2, sl4\* 2 times, k2, pm,

\*Sl4, k2\* 4 times, sl 4 pm,

\*k2, sl4\* 2 times, k2, pm.

Next Round:

k1, \*sl2, k4\* 4 times, sl2, k1, pm,

K3, sl2, k4, sl2, k3, pm,

k1, \*sl2, k4\* 4 times, sl2, k1, pm,

K3, sl2, k4, sl2, k3, pm,

Next Round:

k28 pm, k14 pm, k28 pm, k14 pm. (84 sts)

Next Round:

k2tog k2tog, k5 k2tog, k3, k2tog k5, k2tog  
k2tog, pm, (22 sts)

K2tog, k2tog, k6, k2tog, k2tog, pm, (10 sts)

k2tog k2tog, k5 k2tog, k3, k2tog k5, k2tog k2tog,  
pm, (22 sts)

K2tog, k2tog, k6, k2tog, k2tog, pm. (10 sts)

Change to C1 GREY

Next Round:

Sl1, \*k2, sl4\* 3 times, k2, sl1, pm,  
Sl4, k2, sl4, pm,  
Sl1, \*k2, sl4\* 3 times, k2, sl1, pm,  
Sl4, k2, sl4, pm.

Next Round:

\*k4, sl2\* 3 times, k4, pm,  
Sl3, k4, sl3, pm,  
\*k4, sl2\* 3 times, k4, pm,  
Sl3, k4, sl3, pm.

Next Round:

k22 pm, k10 pm, k22 pm, k10 pm. (64 sts)

Next Round:

k2tog, k2tog, \*k3 k2tog\* 3 times, k2tog, pm,  
(16 sts)  
K2tog, k6, k2tog, pm, (8 sts)  
k2tog, k2tog, \*k3 k2tog\* 3 times, k2tog, pm,  
(16 sts)  
K2tog, k6, k2tog, pm. (8 sts)

Next Round:

k16 pm, k8 pm, k16 pm, k8 pm. (48 sts)

Change to C3:

Next Round:

k3, sl4, k2, sl4, k3, pm,  
K2, sl4, k2, pm,  
k3, sl4, k2, sl4, k3, pm,  
K2, sl4, k2, pm.

Next Round:

\*K4 sl2\* 2 times, k4, pm,  
K3, sl3, k3, pm,  
\*K4 sl2\* 2 times, k4, pm,  
K3, sl3, k3, pm.

Next Round:

k16 pm, k8 pm, k16 pm, k8 pm. (48 sts)

Next Round:

k2tog, k12, k2tog, (14 sts)  
K2tog, k4, k2tog, (4 sts)  
k2tog, k12, k2tog, (14 sts)  
K2tog, k4, k2tog, (4 sts)  
(36 sts total)

Next 2 rounds:

k 36 sts, pm. (at end of first round)

Cast off loosely.

## **MAKING UP**

Sew front and back sides together.

Sew sleeve hems together.

Darn in all loose ends to neaten.