

Lincraft



#P118

ORGANIC
COTTON YARN

**Knitted Mask with
Lining**

EASY KNIT & SEW

Our knitted mask is soft and comfortable over the nose and cheeks but still offers 3ply protection. We've given options for two different types of ear elastics here as well as four sizes for the whole family. Please note each 100g ball of 8ply yarn will make approximately 3 masks. Mask shown is our Older Children's size with hair ties as the elastic option.

MEASUREMENTS

Size		Young	Older	Teens &	Men
		Kids	Kids	Women	
Measurement across face	cm	21	23	24	27
Length of Mask	cm	10	11	12	14
Yarn Required:					
Ficio Organic Cotton OR	100g balls	1	1	1	1
Ficio Starburst OR	100g balls	1	1	1	1
Makr Cotton 8ply	50g balls	1	1	1	1

Please use only the yarn specified. Another yarn is likely to yield different results. Quantities are approximate as knitting styles may vary between knitters. Check the ball bands to ensure all yarn is from the same dye lot.

DIFFICULTY ●●●

KNITTING NEEDLES & EQUIPMENT:

A 3.75mm pair of needles.
 A 4.00mm pair of needles.
 A 3.50mm crochet hook **OR**
 Wool needle for sewing in ends.
 0.2m of poly/cotton.
 0.2m of 100% cotton.
 Matching Thread.
 A Sewing Machine, with either a universal tipped needle or a denim needle.
 Pins.
 60 cm of Elastic **OR**
 2 x Covered Hair Ties

TENSION:

21 sts and 31 rows to 10cm over stocking st, using 3.75mm needles.

KNITTING ABBREVIATIONS:

K: Knit
K2tog: Knit 2 Together
K2tog: Knit 2 Together, through the back loop
M1R: Lifted Bar Increase to the Right,
M1L: Lifted Bar Increase to the Left,
P: Purl
P2tog: Purl 2 together
P2togtbl: Purl 2 together through the back loop
Sl1: Slip One Stitch purlwise
SSK: Slip, Slip Knit (Left Slanting Decrease)

SEWING TERMS (FOR BEGINNERS):

CF: Or centre front, the middle or vertical centre line of the human body as it is placed on the garment
Straight st: The most common sewing stitch. We recommend using a stitch length of 2.50 - 3.00mm for this project, refer to your machine manual on how to adjust.
Zigzag st: A type of stitch that allows for stretch in the seam.
Edge Stitch: Straight machine stitch as close to the edge of the piece or seam as possible. Used for reinforcing seams or to keep seam allowances down.
Seam Allowance: An "excess" border of fabric around your pattern piece to provide enough space for the pieces to be stitched together
Grading Seams: Trim the seam allowances back at different lengths, ie. one layer to 3mm, one layer to 5mm and keep one layer at 6mm, after sewing.

MASK

NOTE: This pattern is written for our Younger Kids sized mask, all other stitch counts and sizes are written in the brackets for easy reference and are as follows: Younger Kids (3-6 years old) (Older Kids (7-12 years old) - Teenagers & Women - Men)

KNITTED SHELL

Casting On:

Using 3.75mm needles, cast on 40 (42 - 44 - 48).

Row 1 (RS): Sl1 *P1, Ktbl, repeat from * to last st, .

Row 2: Sl1, *Ptbl, K1, repeat from * to last st, .
Last two rows form a twisted rib pattern, repeat these two rows once more.

Shaping for Nose:

Change to using 4.00mm needles ... 40 (42 - 44 - 48) sts

Row 1 (RS): Sl1, K18 (19 - 20 - 22), Place a marker, K2, Place a marker, knit to end.

Row 2: Sl1, Purl all sts, slipping the markers in place as you come to them.

Row 3: Sl1, knit to marker, M1R, Sl Marker, K2, Sl Marker, M1L, knit to end.

Row 4: Sl 1, purl all sts.

Repeat Rows 3 & 4 until there are 46 (48 - 52 - 58) sts.

Remove Markers.

Work without further shaping taking care to continue slipping the first st in each row, until piece measures 7.5 (8 - 8.5 - 9) cm from the beginning, ending with a WS row and taking care to measure up the centre line of shaping AT THE SAME TIME on the last row, add a single marker after, 23 (24 - 26 - 29) sts, at the centre of the work

Cheek and Bridge Shaping:

Row 1 (RS): Cast off 7 (7 - 8 - 9) sts, Knit to 2 sts before the marker K2tog, Sl Marker, K2togtbl, Knit to end ... 37 (39 - 42 - 47) sts

Row 2: Cast off 7 (7 - 8 - 9) sts, Purl to 2 sts before the marker, SSP, Sl Marker, P2tog, Purl to end ... 28 (30 - 32 - 36) sts

Row 1 (RS): Cast off 2 (2 - 3 - 3) sts, Knit to 2 sts before the marker K2tog, Sl Marker, K2togtbl, Knit to end ... 24 (26 - 27 - 31) sts

Row 2: Cast off 2 (2 - 3 - 3) sts, Purl to 2 sts before the marker, P2togtbl Sl Marker, P2tog, Purl to end ... 20 (22 - 22 - 26) sts

Row 1 (RS): Cast off 2 (2 - 2 - 3) sts, Knit to 2 sts before the marker K2tog, Sl Marker, K2togtbl, Knit to end ... 16 (18 - 18 - 21) sts

Row 2: Cast off 2 (2 - 2 - 3) sts, Purl to 2 sts before the marker, P2togtbl, Sl Marker, P2tog, Purl to end ... 12 (14 - 14 - 16) sts

Next Row: Sl1, K2togtbl, Knit to 2 sts before the marker K2tog, Sl Marker, K2togtbl, Knit to 3 sts before end, K2tog ... 8 (10 - 10 - 12) sts

Next Row: Sl1, SSP, Purl to 3sts before end, P2tog, P1 ... 6 (8 - 8 - 10) sts

Remove Marker

Casting Off:

Younger Kids Size Only:

Next Row: Sl1, K2tog, Sl Marker, K2togtbl, K1... 4 sts

Next Row: P2togtbl, P2tog ... 2 sts

Cast off sts and Weave in All Ends

Older Kids, Teenage & Women's Size Only:

Next Row: Sl1, K2togtbl, K2tog, Sl Marker, K2togtbl, K2tog, K1 ... 6 sts

Next Row: Sl1, P2togtbl, P2tog, P1 ... 4 sts

Next Row: K2tog, K2togtbl ... 2 sts

Cast off sts and Weave in All Ends

Men's Sizes Only:

Next Row: Sl1, K2togtbl, K2tog, K2togtbl, K2tog, K1 ... 6 sts

Next Row: Sl1, P2togtbl, P2tog, P1 ... 4 sts

Next Row: K2tog, K2togtbl ... 2 sts

Cast off sts and Weave in All Ends

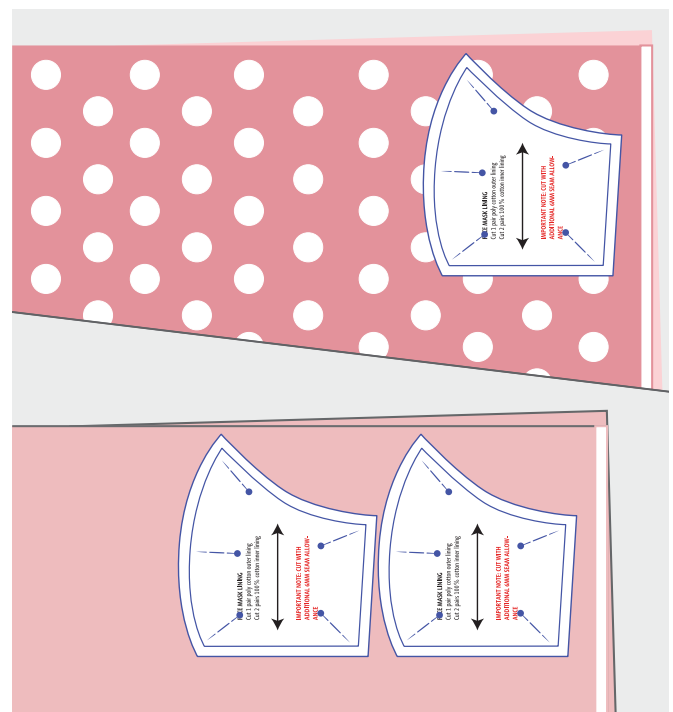
LINING & ELASTIC

Lining:

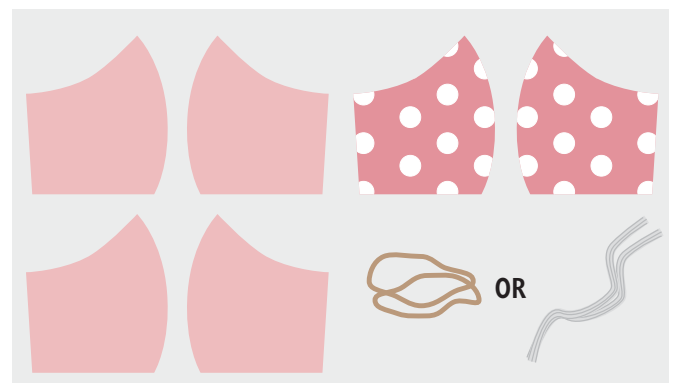
Cut appropriate sized lining, from template available on last page, for the size you're making, taking care to add on 6mm seam allowance to all edges, refer to Item A for how your fabric lays should look. Making sure you have the following pieces cut out (Refer to Item B):

- 1 pair of Outer Lining - preferably using a polyester cotton blend

ITEM A: Cut fabrics on fold, lining up selvages and grainline on pattern.



ITEM B: Pieces cut.



- 2 pairs of Inner Lining - Using 100% cotton, aids in moisture absorbency. Using a sewing machine and like-coloured thread, with RS facing, stitch together each individual layer at the centre front mask seam. Clip into the curve for a smoother curve over the nose.

Lay the two inner lining layers of top of each other RS facing upwards, edge stitch together for stability.

Lay the outer lining on top of the inner lining pieces, taking care that the RS's are all facing together and straight stitch around seam allowance, leaving one of the side edges open.

Grade the seam allowances back to reduce bulk, before turning work through and hand stitch seam closed. Edge stitch around the mask edge if desired.

Hand stitch in place onto mask top edge and side edges, using a whip stitch, refer to Item C.

ELASTIC ATTACHMENT (TWO CHOICES)

Hair Ties (Refer to Item D):

NOTE: We understand that elastic may be in short supply at present so we've included an alternative for our customers, using hair ties.

Using a 3.50mm crochet hook or a wool needle, and starting at the ribbed edge of the mask, holding the hair tie in place on the edge of the mask whip stitch or double crochet the hair tie to the mask.

To crochet hair tie to mask, insert hook from the WS through the work, pull working yarn through to create a chain stitch. Then insert hook through the centre of the hair tie, YO and pull through loop on hoop to create double crochet over the hair tie.

Alternate between these two movements until the other edge of the mask is reached, cut yarn, create another chain st and pull end through st to fasten off.

Elastic:

Cut two 22 (24 - 26 - 26) cm lengths of elastic.

Overlapping the ends by 1.5cm and taking care not to twist, either bar tack or zigzag stitch together to form a continuous loop.

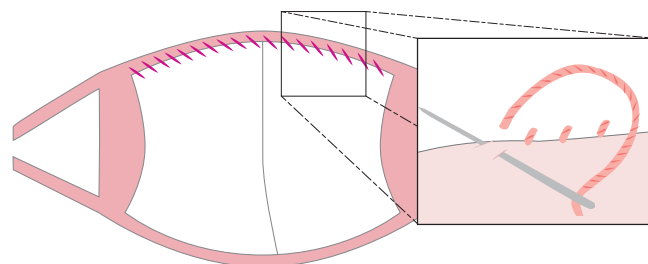
Apply to the mask in the same method as above, zigzag stitch in place down the side edge of the mask or apply a binding over the top to encase the elastic.

FINISHING AND CARE

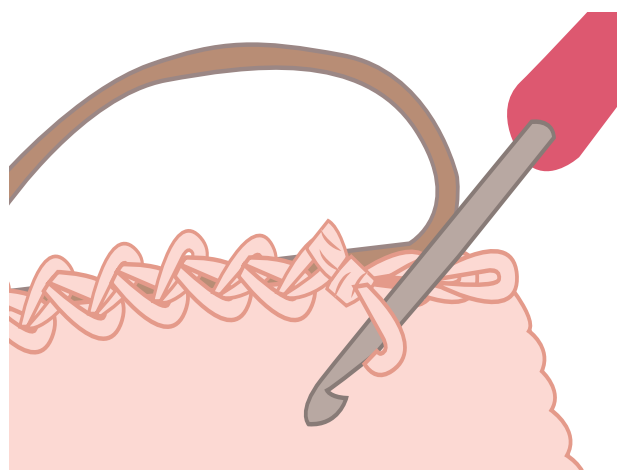
Weave in all ends.

Please take care to wash after each use and avoid touching where possible.

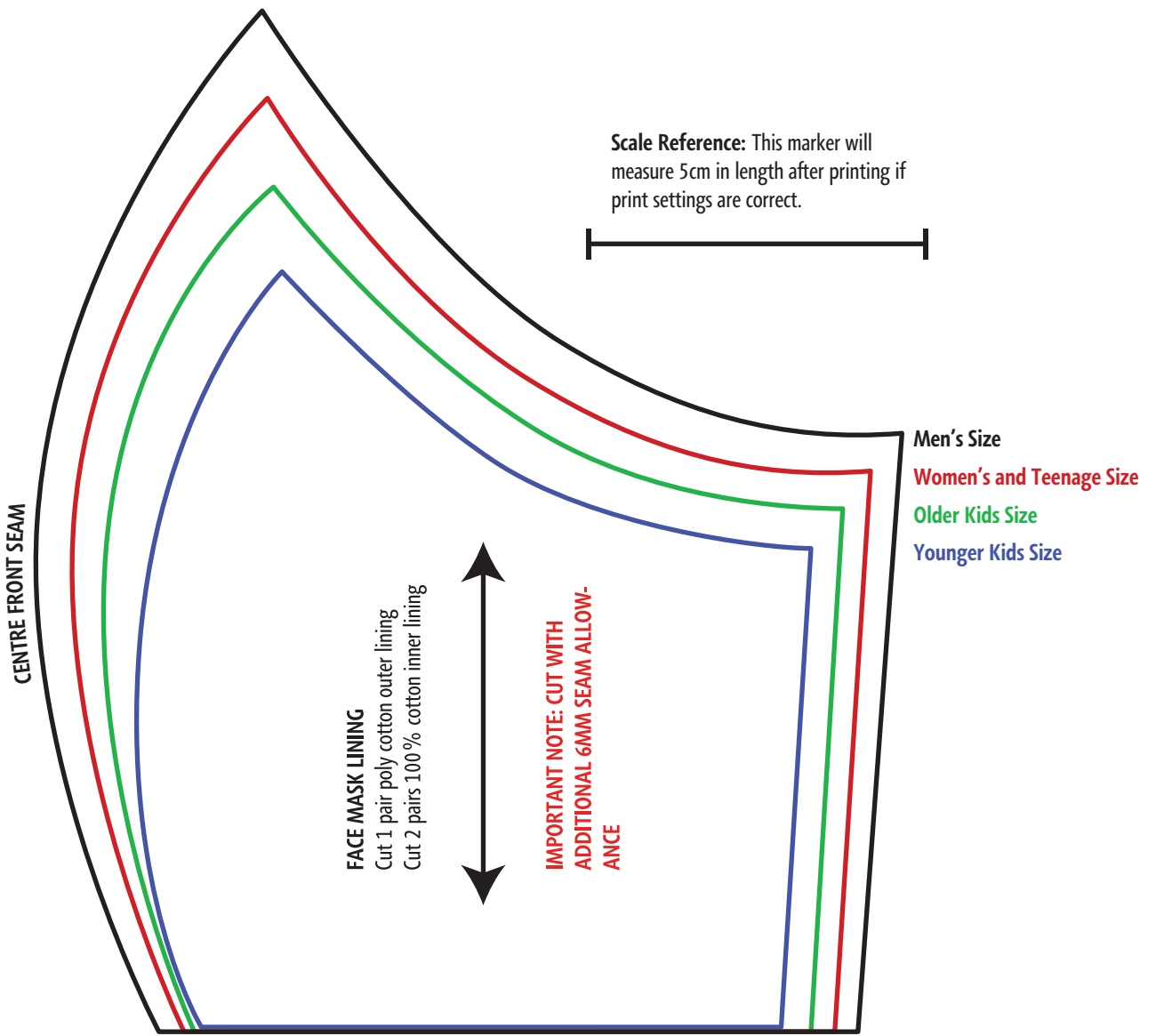
ITEM C: Whip Stitch Lining



ITEM D: Hair Tie Crochet Technique



ITEM E: Face Mask Lining Template



Face Mask Lining Templates: Please follow cutting instructions as written, this pattern does not include seam allowance be sure to refer back to the instructions for advice. DO NOT wear this mask without a lining attached.