

Lincraft



#P089

ESTHER
YARN

Waffle Stitch Scarf

EASY CROCHET

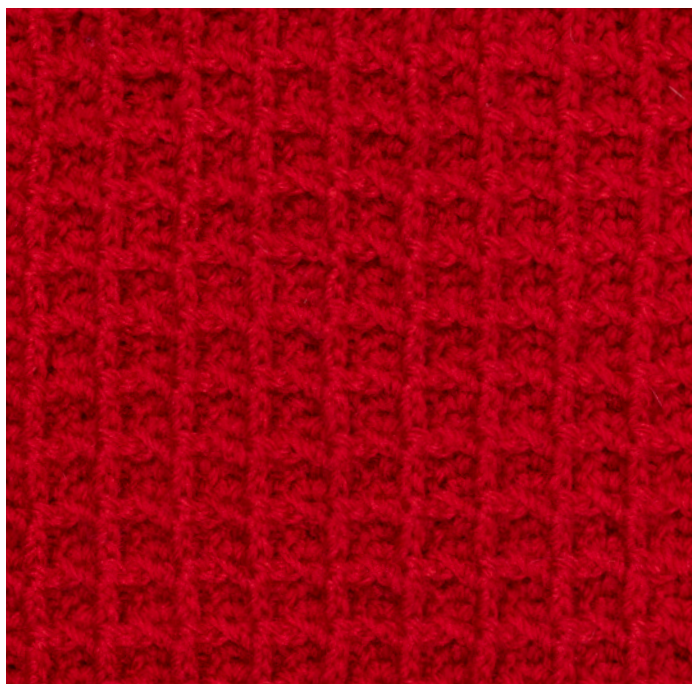
A warm and wonderfully textured stitch, this waffle stitch scarf pattern is great for keeping the cold at bay. It's a pattern that's ideal to give as a gift or to charity as there's no need for specialty sizing and anyone can use a scarf! Worked up in a dense waffle stitch, it's a quick and simple stitch that uses treble crochet and front-post treble crochet to create a waffle textured appearance.

MEASUREMENTS

Scarf		One Size
Width (approx)	cm	30
Length (approx)	cm	180
Yarn Required: Lincraft Acadia	100g balls	4

Please use only the yarn specified. Another yarn is likely to yield different results. Quantities are approximate as knitting styles may vary between knitters. Check the ball bands to ensure all yarn is from the same dye lot.

ITEM A: Waffle Stitch Detail



DIFFICULTY ●●●

CROCHET HOOK & EQUIPMENT:

A 4.00mm crochet hook.
Wool needle for sewing in ends.

TENSION:

24 tr and 14 rows to 10cm over waffle pattern, using 4.00mm crochet hook.

CROCHET ABBREVIATIONS:

ch: chain
tr: treble crochet
fptr: front post treble crochet
sl st: slip stitch

SCARF

Using 4.00mm crochet hook, ch73.

Row 1: tr into the 3rd ch from the hook, then work a tr in each ch across, turn.

Row 2: Ch1, tr into the first st, *Work a fptr into the next st, then tr into the next 2sts. Repeat from * across until 1st remains. fptr in the last st, then tr in the top of the turning chain, turn.

Row 3: Ch1, tr into the very first st. *Work a tr in the next stitch, then fptr into each of the next two sts. Repeat from * to until 2sts remain, then tr into final 2sts.

Repeat Rows 2 and 3 until scarf measures 180cm, ending with a Row 2.

FINISHING

Weave in any ends. If desired, add fringing to scarf as per the instructions below

Fringing:

To add fringing to the scarf, begin by cutting equal lengths of C1. Fold three strands of yarn for one fringe, forming a loop at one end. Take your hook and ins the hook from the back of the work, draw the loop through the edge stitch of one end of the scarf. Secure the fringing by pulling the ends of the yarn through the loop. Repeat this process on every third stitch until the end of the row. Repeat for the other end. You may comb out the yarn to create a fluffier fringe.

Next row: Inc in first st, K22, sl 1, K1, pssso, do not turn, K11. **
Rep from ** to ** 29 times.

Final Panel:

1st row: Inc in first st, K10, sl 1, K1, pssso, knit to last 2 sts, K2tog.

2nd row: K2tog, knit to end.

3rd row: Inc in first st, K11, sl 1, K1, pssso, knit to last 2 sts, K2tog.

4th row: K2tog, knit to end.

5th row: Inc in first st, K12, sl 1, K1, pssso, knit to last 2 sts, K2tog.

6th row: K2tog, knit to end.

Cont in this manner for a further 8 rows.

15th row: Inc in first st, K17, sl 1, K1, pssso, K2tog.

Cast off rem 21 sts.

FINISHING

Sew in all ends.

Size S Only:

Dec one st at armhole edge in next row, then every 4th row until 34 sts rem. Purl 1 row.

Sizes M, L And XL Only:

Dec one st at armhole edge in next 3 rows. Purl 1 row ...

(40-44-48) sts.

Rep last 4 rows (0-2-5) times ... (40-38-33) sts.

All Sizes:

Dec one st at armhole edge in next row, then every alt row until 19 (22-23-24) sts rem.

SHAPE NECK (REFER TO ITEM A):

Next row: Cast off 6 (7-8-8) sts, purl to end ... 13 (15-15-16) sts.

Dec one st at armhole edge in next row, every alt row 6 (7-7-8) times, AT SAME TIME dec one st at neck edge in next row, in foll alt row once, then every 4th row

2 (3-3-3) times ... 2 sts.

Purl 1 row.

Next row: K2tog. Fasten off.

NOTE: Tatur? Poessintio. Rae platque omnienimi, occus, officillabo.
Ut atius, cus, es sequo dolorep eriaest aut il il il maximaxime
es ex elestis se voloreium rerum ipit volorecupat laborepe

Size S Only:

Dec one st at armhole edge in next row, then every 4th row until 34 sts rem. Purl 1 row.

Sizes M, L And XL Only:

Dec one st at armhole edge in next 3 rows.

Purl 1 row ... (40-44-48) sts.

Rep last 4 rows (0-2-5) times ... (40-38-33) sts.

All Sizes:

Dec one st at armhole edge in next row, then every alt row until 20 (23-24-25) sts rem.

Purl 1 row.

SHAPE NECK:

Next row: Cast off 6 (7-8-8) sts, knit to last 2 sts, K2tog ... 13 (15-15-16) sts.

Dec one st at armhole edge in every alt row 7 (8-8-9) times, AT SAME TIME dec

one st at neck edge in every alt row twice, then every 4th row 2 (3-3-3) times ...

2 sts. Purl 1 row.

Next row: K2tog. Fasten off.

SLEEVES

Using 4.50mm needles, cast on 42 (44-46-48) sts.

Knit 11 rows garter st, first row is wrong side, and inc one st in centre of last row ... 43 (45-47-49) sts.

Working in reverse stocking st for rem, beg with a purl row, inc one st at each end

of 5th row, then every 8th (6th-4th-4th) row until there are 53 (53-51-65) sts,

then every 10th (8th-6th-6th) row until there are 63 (69-77-83) sts.

Cont without shaping until work measures 43cm (or length desired) from beg, ending with a knit row.

FINISHING

Join side and Sleeve seams. Sew on buttons. Sew in all end.

ITEM A: Lorem ipsum dolor sit amet, consectetur adipiscing elit.

Next row: Inc in first st, K22, sl 1, K1, pssso, do not turn, K11. **
Rep from ** to ** 29 times.

Final Panel:

1st row: Inc in first st, K10, sl 1, K1, pssso, knit to last 2 sts, K2tog.

2nd row: K2tog, knit to end.

3rd row: Inc in first st, K11, sl 1, K1, pssso, knit to last 2 sts, K2tog.

4th row: K2tog, knit to end.

5th row: Inc in first st, K12, sl 1, K1, pssso, knit to last 2 sts, K2tog.

6th row: K2tog, knit to end.

Cont in this manner for a further 8 rows.

15th row: Inc in first st, K17, sl 1, K1, pssso, K2tog.

Cast off rem 21 sts.

SIZE S ONLY:

Dec one st at armhole edge in next row, then every 4th row until 34 sts rem. Purl 1 row.

SIZES M, L AND XL ONLY:

Dec one st at armhole edge in next 3 rows. Purl 1 row ... (40-44-48) sts.

Rep last 4 rows (0-2-5) times ... (40-38-33) sts.

FINISHING

Join side and Sleeve seams. Sew on buttons. Sew in all end.

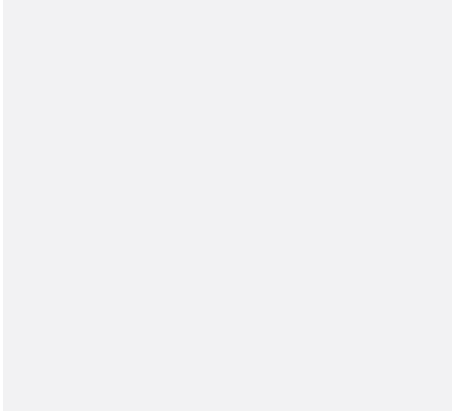
ITEM A: Lorem ipsum dolor sit amet, consectetur adipiscing elit.

#P085

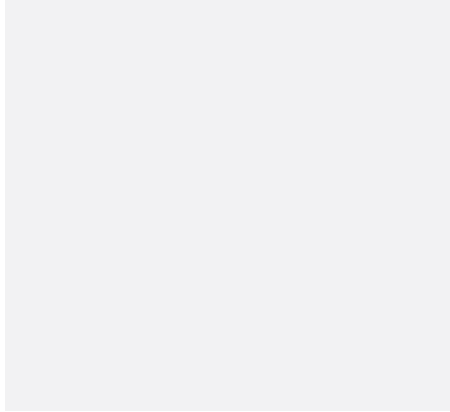
Esther Breton Stripe Sweater & Beanie

EASY KNIT

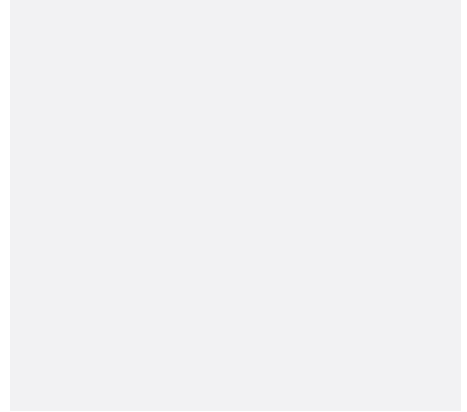
ITEM B: Lorem ipsum dolor sit amet, consectetur adipiscing elit.



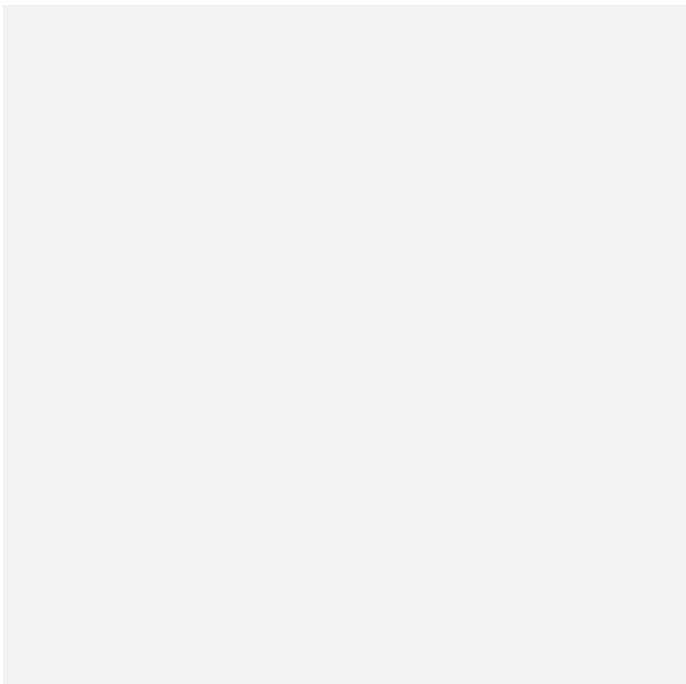
ITEM C: Lorem ipsum dolor sit amet, consectetur adipiscing elit.



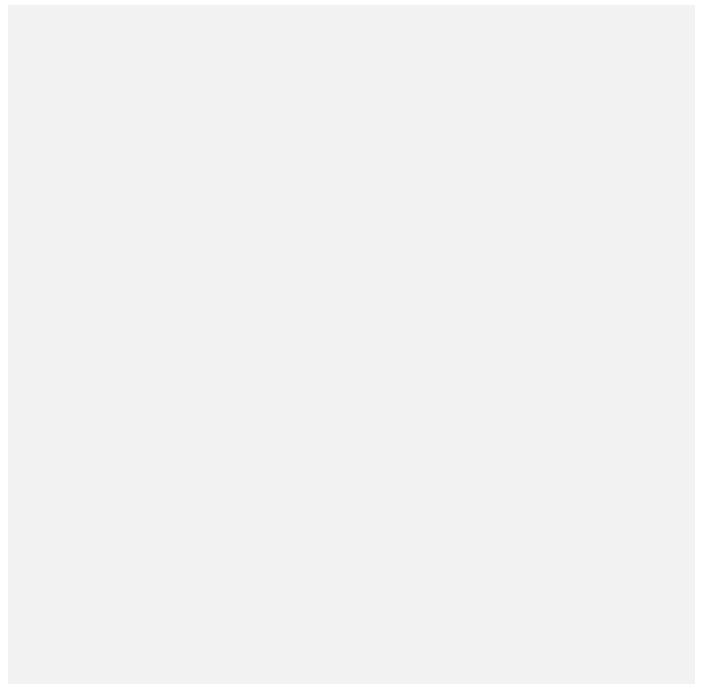
ITEM D: Lorem ipsum dolor sit amet, consectetur adipiscing elit.



ITEM E: Lorem ipsum dolor sit amet, consectetur adipiscing elit.



ITEM F: Lorem ipsum dolor sit amet, consectetur adipiscing elit.



#P085

Esther Breton Stripe Sweater & Beanie

EASY KNIT

ITEM E: Lorem ipsum dolor sit amet, consectetur adipiscing elit.

