



PDF PATTERNS

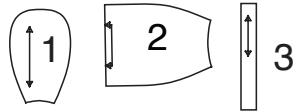
# McCall's®

## M8171

### PIECES (3)

#### CAP

- 1 CROWN
- 2 BAND
- 3 TIE END

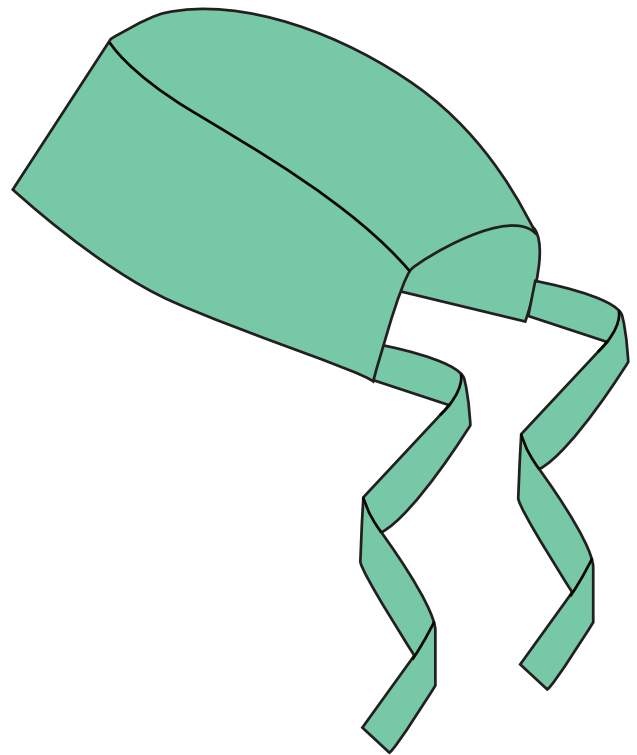


### NON-SURGICAL SCRUB CAP

### THINGS YOU'LL NEED

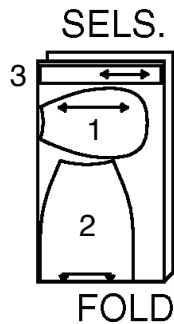
#### SUGGESTED FABRICS

- › Cotton and Cotton Blends, Laundered Cottons, Broadcloth, Chambray, Poplin.
- Allow extra fabric for matching plaids or stripes.



### CUTTING INFO

USE PIECES: 1,2,3  
 44" 45" OR 58" 60" (115CM OR 150CM)  
 WITH OR WITHOUT NAP



### YARDAGE

#### ONE SIZE

1/2 YD. OF 45" OR 60"\*\*\*

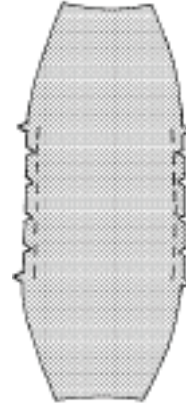
COMMUNITY



## CAP

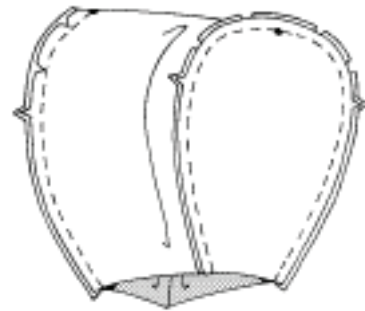
**NOTE: USE 3/8" (1 CM) SEAM ALLOWANCES UNLESS OTHERWISE INDICATED.**

- 1** Machine-stitch 3/8" (1cm) from raw edges of band between notches, as shown. Clip to stitching between notches, being careful not to clip stitching.



- 2** With RIGHT sides together, pin crown to band, placing center fold at large dot, matching notches, having raw edges even.

Stitch in 3/8" (1cm) seam. With RIGHT sides together, stitch remaining crown to band in the same manner.



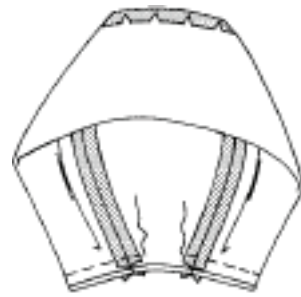
- 3** Fold tie end in half, lengthwise, with RIGHT sides together. Stitch in 3/8" (1cm) seam, leaving end with small and large dots open.



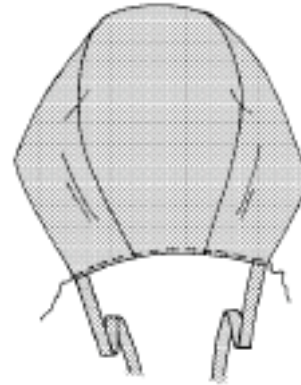
- 4** Turn tie end RIGHT side out; press. On OUTSIDE, pin tie ends to band, matching small and large dots, having raw edges even. Baste.

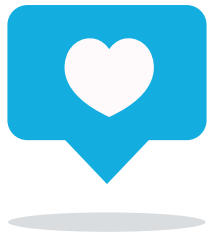


- 5** Fold cap along fold line, with RIGHT sides together, matching seams, having raw edges even. Stitch lower edge in 3/8" (1cm) seam, leaving an opening to turn. Trim seam.



- 6** Turn hat RIGHT side out. Press. Stitch opening edges together. On OUTSIDE, stitch close to lower edges.





# Congrats!

You've completed your sewing adventure!

---

## SHARE YOUR look!




Post your pattern and tag us at  
@McCALLPATTERNCOMPANY and use #MCCALLSPATTERNS  
for a chance to be featured on our social media!

Look for more McCall's PDF patterns at [McCALLPATTERN.COM](https://www.mccallpattern.com)



Showing commUNITY support in a time of crisis. #wereinthistogether 

 1-800-255-2762

McCall's Patterns is part of Design Group Americas, Inc. family of brands  
© 2020 Copyright IG Design Group PLC. | All Rights Reserved  
Sold for individual home use only and not for commercial or manufacturing purposes.