

how to  
make

Lincraft



Dear Santa

#A369

## YOU WILL NEED

- ❑ Christmas fabric - 20cm
- ❑ Homespun - plain, ivory - 20cm
- ❑ Gutermann - colours 1, 396
- ❑ Scissors
- ❑ Template
- ❑ Marvy - Fabric marker
- ❑ Pins
- ❑ Template

## DIFFICULTY ●●●

### INSTRUCTIONS

**Step 1:** Using the template as a guide cut 2 pieces of the Christmas fabric, adding a 0.5 cm seam allowance.

**Step 2:** With right sides together machine sew a 0.5 seam allowance. Leave a 5cm opening to turn right side out.

**Step 3:** Snip corners.

**Step 4:** Turn right side out and press.

**Step 5:** Top stitch 2-3mm from edge. This will also close the 5cm opening.

**Step 6:** Cut 2 12 x 16.5cm pieces from the homespun.

**Step 7:** Sew a 0.5 cm seam allowance, leaving a 5cm opening.

**Step 8:** Snip the corners.

**Step 9:** Turn right side out and press.

**Step 10:** Insert a paper through opening to protect the back piece. Write message with fabric marker. Remove paper. Top stitch 2-3mm from edge. This will also close the opening.

**Step 11:** Using the template as a guide, fold sides to centre.

**Step 12:** Insert folder letter as a guide to create final envelope size. Sew in place the bottom of the sides.

**Step 13:** Fold bottom upward.

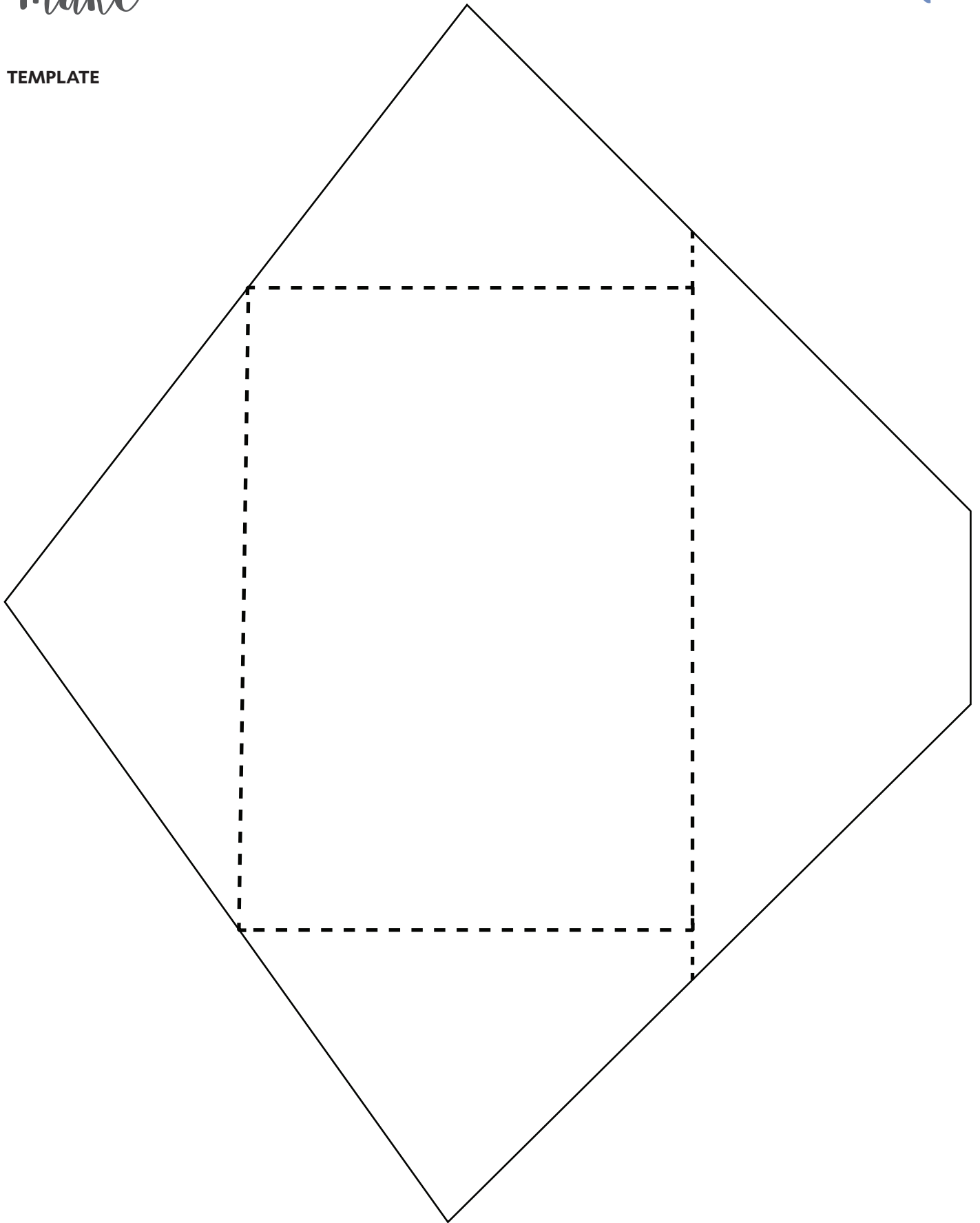
**Step 14:** Pin in place and blind stitch the 2 diagonals.



how to  
make

Lincraft

TEMPLATE



Dear Santa

#A369