

Lincraft



**#P043**

COLOURMATE  
10PLY YARN

**Cabled Cushion Cover**

INTERMEDIATE KNIT

Cables and crossed stitches are combined to create this striking cushion cover. Brighten up your sofa or bed with bold, statement colours from our Colourmate 10ply range.

### MEASUREMENTS

Width (approx)	cm	45
Length (approx)	cm	45
<b>Yarn Required:</b>		
Makr Colourmate 10ply	200g balls	2

Please use only the yarn specified. Another yarn is likely to yield different results. Quantities are approximate as knitting styles may vary between knitters. Check the ball bands to ensure all yarn is from the same dye lot.

### ITEM A: Close up of cable stitch



### DIFFICULTY ●●●

#### NEEDLES AND EQUIPMENT:

A pair of 5.00mm knitting needles.  
Wool needle for sewing in ends.  
2 x Stitch Holders.  
A Square Cushion Insert, 45cm x 45cm.  
3 x Buttons.

#### TENSION:

16 sts and 22 rows to 10cm over cable pattern st, using 5.00mm needles.

#### KNITTING ABBREVIATIONS:

**K:** Knit  
**K2tog:** Knit 2 Together  
**P:** Purl  
**P2tog:** Purl 2 Together  
**YO:** Yarn Over  
**2/1 RPC:** Sl 1 st to CN, hold in back, K2, P1 from CN  
**2/1 LPC:** Sl 2 sts to CN, hold in front, P1, K2 from CN  
**2/2 RPC:** Sl 2 sts to CN, hold in back, K2, P2 from CN  
**2/1 LPC:** Sl 2 sts to CN, hold in front, P2, K2 from CN  
**1/1 RC:** Sl 1 st to CN, hold in back, K1, K1 from CN  
**1/1 LC:** Sl 1 st to CN, hold in front, K1, K1 from CN

#### CUSHION COVER

##### Back Button Stand:

Using 5.00mm needles, cast on 68 sts.

**Row 1 (RS):** \*K2, P2, repeat from \* to end

This row forms a 2x2 rib pattern, repeat 11 more times ... 12 rows

Work in stocking st until piece measures 25cm from beginning, Cast off.

##### Front Panel:

Cast on 84 sts using 5.00 mm needles.

**Row 1:** Knit all sts.

**Row 2:** K19, P4, K5, P4, (K4, P4) three times, K5, P4, knit to end.

**Row 3:** K1, P18 [1/1 RC, 1/1 LC], P2, [P3, 2/2 RC, (P4, 2/2 RC) three times, P3], P2, [1/1 RC, 1/1 LC] ... purl to last st, K1

**Row 4:** K19, P4, K2, [K3, P4, (K4, P4) three times, K3] Knit to end.

**Row 5:** K1, P18 [1/1 RC, 1/1 LC], P2, [P1, (2/2 RPC, 2/2 LPC) four times, P1], P2, [1/1 RC, 1/1 LC] ... purl to last st, K1.

**Row 6:** K19, P4, K2, [K1, P2, (K4, P4) three times, K4, P2, K1] Knit to end.

**Row 7:** K1, P18 [1/1 RC, 1/1 LC], P2, [P1, K2, P4, (2/2 RC, P4) three times, K2, P1] P2, [1/1 RC, 1/1 LC] ... purl to last st, K1

**Row 8:** K19, P4, K2, [K1, P2, (K4, P4) three times, K4, P2, K1] Knit to end.

**Row 9:** K1, P18 [1/1 RC, 1/1 LC], P2, [P1, (2/2 LPC, 2/2 RPC) four times, P1] P2, [1/1 RC, 1/1 LC] ... purl to last st, K1

**Row 10:** K19, P4, K2, [K3, P4, (K4, P4) three times, K3] Knit to end.

Repeat rows 3-10 until piece measures 45cm in length, ending with a WS row. Knit one row and cast off.

##### Back Button Stand Overlay:

Cast on 68 sts using 5.00mm needles.

Work 4 rows of 2x2 rib.

### Buttonholes:

**Next row (RS):** (K2, P2) 4 times, K2 place remaining 50 sts on stitch holder. Work in rib keeping pattern correct for 4 more rows. Place these sts on a second st holder.

\*\* Take the next 16 sts in the row off the stitch holder, leaving the remaining 34 sts, work (P2, K2) 4 times. Work 4 more rows of rib. Place these sts on the second st holder with the 18 sts worked earlier. \*\*\*

Repeat from \*\* to \*\*\* once more ... 18 sts left on first st holder. (P2, K2) 4 times, P2 on rem sts and work in rib for 4 more rows ... 3 buttonholes made

### Back Buttonstand Overlay (Continued):

Place all sts back onto working needles and work one RS row. Work in 2x2 rib for 4 more rows.

Continue working in stockinette until piece measures 25cm in length. Cast off.

### FINISHING

Sew all pieces together and weave in all ends. Attach buttons to cushion cover.

**TO READ CABLE CHART:** Work RS rows from right to left and WS rows from left to right. Work reverse stockinette st in between each of the cables for the number of sts referenced in the pattern, please note these vary between sizes.

### CABLE CHART A

4 st, 2 row repeat

**Row 1:** 1/1 RC, 1/1 LC

**Row 2:** Purl all

### CABLE CHART B

8 row repeat

**Row 1:** P3, 2/2 RC, (P4, 2/2 RC) three times, P3

**Row 2:** K3, P4, (K4, P4) three times, K3

**Row 3:** P1, (2/2 RPC, 2/2 LPC) four times, P1

**Row 4:** K1, P2, (K4, P4) three times, K4, P2, K1

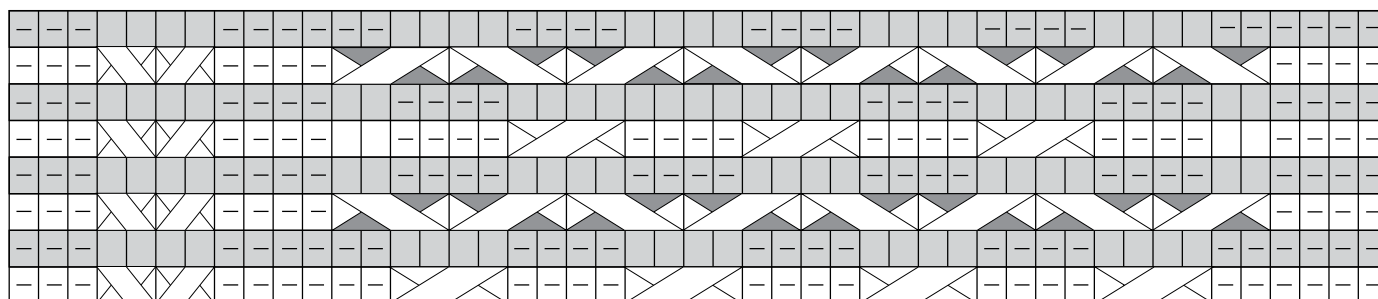
**Row 5:** P1, K2, P4, (2/2 RC, P4) three times, K2, P1

**Row 6:** K1, P2, (K4, P4) three times, K4, P2, K1

**Row 7:** P1, (2/2 LPC, 2/2 RPC) four times, P1

**Row 8:** K3, P4, (K4, P4) three times, K3


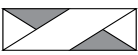

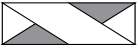




### ITEM B: Cable Chart for Cushion Cover



**CABLE A**  
2 row repeat

**CABLE B**  
8 row repeat

### KEY

 = RS Knit	 = 2/2 RPC
 = RS Purl	 = 2/2 LPC
 = WS Knit	 = 2/2 RC
 = WS Purl	 = 2/2 LC