



Lincraft

#P030

BABY SOFT
PRINT YARN

Pram Snuggle Sack

INTERMEDIATE KNIT

Keep your baby warm and cosy with this knitting pattern. Great as a shower gift or for your own child, this pattern has minimal shaping and a beautiful striped feature cable. Please do not leave your child unattended in the snuggle sack and monitor them closely to avoid overheating.

MEASUREMENTS

One Size

Garment Measures at Chest	cm	52
Full Length	cm	48
To Fit Height	cm	48-52
Yarn Required: Baby Soft Print 8ply (M)	100g balls	3
Yarn Required: Baby Soft 8ply (C1)	100g balls	1

Please use only the yarn specified. Another yarn is likely to yield different results. Quantities are approximate as knitting styles may vary between knitters. Check the ball bands to ensure all yarn is from the same dye lot.

DIFFICULTY ●●●

NEEDLES AND EQUIPMENT:

A pair of 4.00mm knitting needles.
A 4.00mm circular knitting needle, 80cm.
Cable Needles.
Stitch Holders.
Wool needle for sewing in ends.

TENSION:

20 sts and 30 rows to 10cm over stocking st, using 4.00mm needles.

KNITTING ABBREVIATIONS:

K:	Knit
K2tog:	Knit 2 Together
P:	Purl
P2tog:	Purl 2 Together
Sl1:	Slip One Stitch purlwise
1/1 RC:	sl 1 st onto cn, hold to back, K1, P1 from cn
1/1 LC:	sl 1 st onto cn, hold in front, P1, K1 from cn
2/1 RC:	sl 1 st onto cn, hold in back, K2, P1 from cn
2/1 LC:	sl 2 sts onto cn, hold in front, P1, K2 from cn
2/1 RPC:	sl 1 st onto cn, hold in back, K2, P1 from cn
2/1 LPC:	sl 2 sts onto cn, hold in front, P1, K2 from cn
2/2 RC:	sl 2 sts onto cn, hold in back, K2, K2 from cn
2/2 LC:	sl 2 sts onto cn, hold in front, K2, K2 from cn

SNUGGLE SACK

IMPORTANT NOTE: We do not recommend using this sack as a swaddle for when your child is sleeping. Please take care and monitor your child to avoid overheating.

BACK

Main Piece:

Using 4.00 mm knitting needles and M, cast on 98 sts. Work in stockinette until piece measures 48cm from beg ending with a purl row.

Hood:

Row 1: *K1, K2tog, K2, repeat from * to last 3 sts, K1, K2tog... 78 sts
Work in stocking st until piece measures 16 cm from the dec row, ending with a purl row.

Next Row: *K3, K2tog, K3, repeat from * to last 6 sts, K3, K2tog, K1 ... 68 sts
Work three rows as normal.

Next Row: *K2, K2tog, K3, repeat from * to last 5 sts, K2, K2tog, K1 ... 58 sts
Work five rows as normal.

Next Row: *K1, K2tog repeat from * to last st, K1 ... 39 sts
Work one row as normal.

Keep remaining 39 sts on a stitch holder.

FRONT

NOTE: This panel involves simple colourwork, we recommend using an instaria style of knitting, ie. without floats, rather than fair isle. A single ball is worked for either side of the panel. Floating the yarn may result in creating loops your child's fingers could get stuck in.

Casting On:

Using 4.00mm knitting needles and M, cast on 108 sts, knit 3 rows.

Row 4 (WS): Continuing in stockinette work the first 33 sts of the pattern, change to C1, K2, P3, K6, P2, K3, P4, K2, P4, K3, P2, K6, P3, K2, change to M, work stocking st to end.

Cable Panel:

Continue to work the cable pattern below over the centre panel in C1 (42 sts) taking care to keep the remaining sts either side in stocking st and making sure to change the colour back. Work in this manner repeating rows 1-16 until the piece measures 48cm from the beg, ending with a WS row.

Row 1: P2, 2/1 LC, P6, 2/1 LPC, P2, 2/2 RC, P2, 2/2 LC, P2, 2/1 RPC, P6, 2/1 RC, P2

Row 2: K2, P3, K7, P2, K2, P4, K2, P4, K2, P2, K7, P3, K2

Row 3: P1, 1/1 RPC, 2/1 LPC, P6, (2/1 LPC, 2/1 RPC) three times, P6, 2/1 RPC, 1/1 LPC, P1

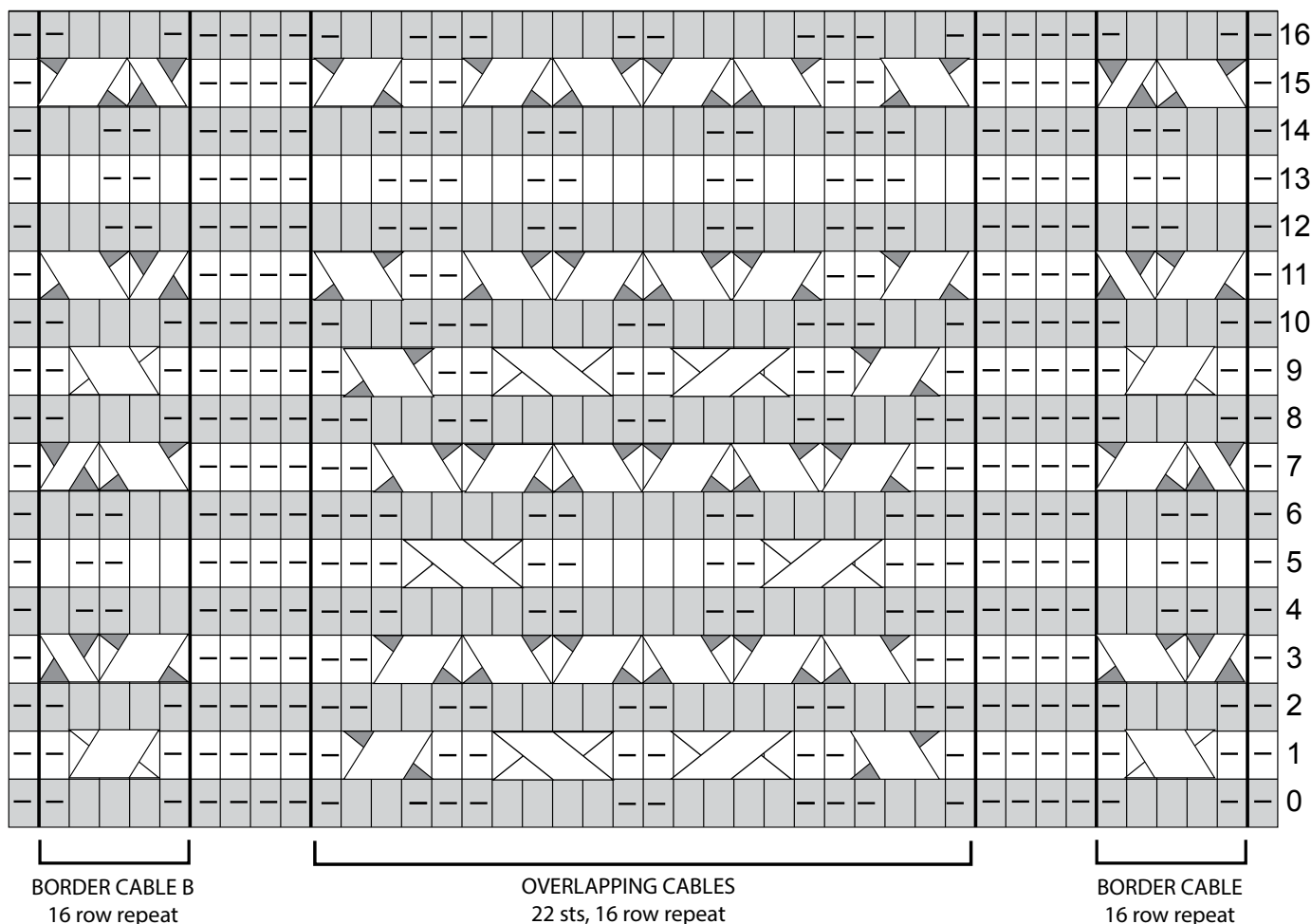
Row 4: K1, P1, K2, P2, K7, (P4, K2) twice, P4, K7, P2, K2, P1, K1

Row 5: P1, K1, P2, K2, P7, 2/2 RC, P2, K4, P2, 2/2 LC, P7, K2, P2, K1, P1

Row 6: K1, P1, K2, P2, K7, (P4, K2) twice, P4, K7, P2, K2, P1, K1

Row 7: P1, 1/1 LPC, 2/1 RPC, P6, (2/1 RPC, 2/1 LPC) three times, P6,

ITEM A: Cable Chart for Centre Panel



STITCH KEY: Cable and Basic Stitches

= RS Knit	= 2/1 RPC	= 1/1 RPC
= RS Purl	= 2/1 LPC	= 1/1 LPC
= WS Knit	= 2/2 RC	= 2/1 RC
= WS Purl	= 2/2 LC	= 2/1 LC

2/1 LPC, 1/1 RPC, P1

Row 8: K2, P3, K7, P2, K2, P4, K2, P4, K2, P2, K7, P3, K2.

Row 9: P2, 2/1 RC, P6, 2/1 RPC, P2, 2/2 RC, P2, 2/2 LC, P2, 2/1 LPC, P6, 2/1 LC, P2

Row 10: K2, P3, K6, P2, K3, P4, K2, P4, K3, P2, K6, P3, K2

Row 11: P1, 2/1 RPC, 1/1 LPC, P4, 2/1 RPC, P2, (2/1 RPC, 2/1 LPC) twice, P2, 2/1 LPC, P4, 1/1 RPC, 2/1 LPC, P1

Row 12: K1, P2, K2, P1, K4, P2, K3, P2, K2, P4, K2, P2, K3, P2, K4, P1, K2, P2, K1

Row 13: P1, K2, P2, K1, P4, K2, P3, K2, P2, K4, P2, K2, P3, K2, P4, K1, P2, K2, P1

Row 14: K1, P2, K2, P1, K4, P2, K3, P2, K2, P4, K2, P2, K3, P2, K4, P1, K2, P2, K1

Row 15: P1, 2/1 LPC, 1/1 RPC, P4, 2/1 LPC, P2, (2/1 LPC, 2/1 RPC) twice, P2, 2/1 RPC, P4, 1/1 LPC, 2/1 RPC, P1

Row 16: K2, P3, K6, P2, K3, P4, K2, P4, K3, P2, K6, P3, K2

Ribbed Foldover Cuff:

Work in M only for the remainder of work.

Next Row: K35, (K2tog, K10) three times, K2tog, K35 ... 104 sts

Next Row (WS): K1, P2 *K2, P2, repeat from * to last st, K1

Next Row: K3 *P2, K2, repeat from * to last st, K1

Repeat last two rows until ribbing measures 10cm, bind off in rib.

MAKE UP

With RS facing, divide rem sts onto two needles and kitchener st together. Sew the bottom edges of the front and back pieces together. Fold the ribbed cuff on the front over to the RS, sew side seams together from the bottom edge to the beg of the dec for the hood. Take care to sandwich all the layers of the ribbed edge and the front piece in the same seam. Sew in all ends.

RIBBED EDGE

Using 4.00mm circular knitting needles and RS facing pick up, 82 sts around the edge of the hood.

Row 1 (WS): K1, *P2, K2 repeat from * to last st, K1

Row 2: K1, *P2, K2 repeat from * to last st, K1

Repeat these two rows 4 more times and cast off in rib.

ITEM B: Stitch Detail

