

Lincraft



#P023

BABY SOFT
8PLY YARN

Children's Peeking Bear
Sweater

INTERMEDIATE KNIT

This classic knitted jumper features a bear face with a cheeky smile and a cute nose. Worked flat, this sweater features, raglan arm seams with buttons for ease of entry and intarsia-style colour work. Our model here is wearing the 12 Month size, for a matching skort please refer to P033 - Baby Soft Ruffled Skort.

MEASUREMENTS

Size		0	3	6	12
		mons	mons	mons	mons
To Fit Chest	cm	35	40	45	50
Garment Measures (approx)	cm	41	46	52	58
Length (approx)	cm	22	26	29	33
Sleeve Length	cm	11	13	16	19
Yarn Required:					
Makr Baby Soft Print 8ply (M)	100g balls	1	1	1	2
Makr Baby Soft 8ply (C1)		1	1	1	1
Makr Baby Soft 8ply (C2)		1	1	1	1

Please use only the yarn specified. Another yarn is likely to yield different results. Quantities are approximate as knitting styles may vary between knitters. Check the ball bands to ensure all yarn is from the same dye lot.

DIFFICULTY ●●●

NEEDLES:

A pair of 4.00mm knitting needles.
A pair of 5.00mm knitting needles.
Wool needle for sewing in ends.
Stitch holders.

TENSION:

22 sts and 30 rows to 10cm over stocking st, using 4.00mm needles.

KNITTING ABBREVIATIONS:

K: Knit
K2tog: Knit 2 Together
Kfb: K1 into the fr of the next stitch on the needle but do not slide the stitch off, K1 into the bk of the same stitch on the needle and slide the stitch off the needle
P: Purl
P2tog: Purl 2 Together
Pfb: Purl 1, Purl tbl to increase by 1
Sl1: Slip One Stitch purlwise
wyif: With Yarn in Front
wyib: With Yarn in Back
ssk: Slip, Slip Knit (Left Slanting Decrease)

COLOURS

M: Main Colour
C1: Contrast Colour 1
C2: Contrast Colour 2

BACK

Casting On:

Using 4.00 mm needles and C1, cast on 45 (51 - 59- 67) sts.

Size 0 Months

Row 1: K1, *P2, K2, repeat from * to end.

Row 2: *P2, K2, repeat from * to last st, P1.

Size 3, 6 & 12 Months

Row 1: K1, P2 *K2, P2, repeat from * to end.

Row 2: *K2, P2, repeat from * to last three sts, K2, P1.

These two rows form a 2 x 2 rib pattern.

Work a further 5 (5 - 7 - 7) rows in rib.

Working in stockinette stitch work 15 (19 - 21 - 21) rows.

Continue working in stockinette change to colour M and work until the piece measures 11 (14 - 16 - 18) cm from beg, ending on a purl row.

Shape Raglan Armholes:

Cast off 2 sts at the beg of the next two rows ... 41 (47 -55 -63) sts

Dec one st at each end of the next row, then repeat on every 5th row until 31 (41 - 49 - 55) sts remain.

Dec one st at each end of every row for 6 (8 - 9 - 10) rows until 19 (21 - 23 - 25) sts remain. Work 1 row. Leave remaining sts on a stitch holder.

FRONT**Casting On:**

Using 4.00 mm needles and colour C1, cast on 45 (51 - 59 - 67) sts.

Size 0 Months

Row 1: K1, *P2, K2, repeat from * to end.

Row 2: *P2, K2, repeat from * to last st, P1.

Size 3, 6 & 12 Months

Row 1: K1, P2 *K2, P2, repeat from * to end.

Row 2: *K2, P2, repeat from * to last three sts, K2, P1.

These two rows form a 2 x 2 rib pattern.

Work a further 5 (5 - 7 - 7) rows in rib.

Working in stockinette stitch work 10 (15 - 19 - 21) rows.

Continue working in stockinette st, following the attached colour charts for the remainder of work, taking care to follow the dec correctly **AT THE SAME TIME**.

NOTE: We recommend working this style of colour work in an intarsia style, without floats. Roll off a small amount of C2 to create a second ball so both ears can be worked without floats.

Work piece without shaping until the piece measures 11 (14 - 16 - 18) cm from beg, ending on a purl row.

Shape Raglan Armholes:

Cast off 2 sts at the beg of the next two rows ... 41 (47 - 55 - 63) sts.

Dec one st at each end of the next row and then on every 5th row until 35 (41 - 51 - 55) sts remain.

Size 3, 6 and 12 Months Only:

Dec one st at each end of every alt row until (35 - 37 - 41) sts remain.

All Sizes:

Work 3 (1 - 1 - 1) row/s.

Shape Neck:

Next row: K2tog, K10 (11 - 12 - 13), turn.

Continue working on these 11 (12 - 13 - 14) sts.

Dec one at the raglan edge in every alt row 6 (6 - 6 - 7) times.

AT THE SAME TIME, dec one st at the neck edge every alt row 4 (0 - 2 - 3) times, then every 3rd row 0 (4 - 1 - 1) times and then every 4th row 0 (0 - 2 - 2) times until 2 sts remain.

All Sizes:

Work 1 row. K2tog and fasten off.

Slip the next 9 (9 - 11 - 11) sts onto a stitch holder. With the RS of the work facing, join yarn to the rem sts, work to last 2 sts, K2tog ... 11 (12 - 13 - 14) sts.

Work as you did for the other side.

SLEEVES

Using 4.00 mm needles and M, cast on 26 (30 - 32 - 32) sts.

Size 0 & 3 Months

Row 1: K2, *P2, K2, repeat from * to end.

Row 2: *P2, K2, repeat from * to last 2 sts, P2.

Size 6 & 12 Months

Row 1: *K2, P2, repeat from * to end.

Row 2: As Row 1

These two rows form a 2 x 2 rib pattern.

Work 6 (6 - 8 - 8) rows in 2x2 rib and increase 2 (0 - 0 - 2) evenly across last row... 28 (32 - 32 - 34) sts.

Working in stockinette st, inc one st at each of 6th row, then every alt (alt - 3rd - 4th) row until there are 38 (34 - 40 - 38) sts, then every 3rd (3rd - 4th - 4th) row until there are 40 (40 - 44 - 48) sts.

Cont without shaping until work measures 11 (13 - 16 - 19) cm (or length desired, this is your underarm seam measurement) from beg, ending with a purl row.

Shape Raglan:

Cast off 2 sts at beg of next 2 rows ... 36 (36 - 40 - 44)

Size 3 & 12 Months Only:

Dec one st at ea end of the next row, then on every 3rd row until (34 - 40) sts remain.

Work 1 row.

All Sizes:

36 (34 - 40 - 40) sts ... Dec one st at each end of the next row, then every alt row until 6 sts remain.

Work 1 row.

Leave remain sts on a st holder.

BACK NECKBAND

Join back raglan seams, note that the top of the sleeve seams form part of the back neckline. With RS facing, using 5.00 mm circular needles and M, [(K2tog) 1 (0 - 1 - 0) time/s, K2 (4 - 2 - 4), K2tog] across right sleeve stitch holder, [(K2tog, K15 (17 - 19 - 21), K2tog] across backstitch holder, then [(K2tog) 1 (0 - 1 - 0) time/s, K2 (4 - 2 - 4), K2tog] across left sleeve stitch holder ... 25 (29 - 29 - 33) sts

Work 8 rows in 2x2 rib.

Cast off in loosely in rib.

FRONT NECKBAND

With right side facing and using 4.00 mm needles and colour M, knit up 9 (12 - 12 - 13) sts along left front neck shaping, knit across sts from front st holder, then knit up 9 (12 - 12 - 13) sts across right front neck shaping ... 27 (33 - 35 - 37) sts.

Work a 8 rows in 2x2 rib.

Cast off loosely in rib.

FRONT SLEEVE BANDS

With right side facing and using 4.00 mm needles and M, knit up 24 (26 - 32 - 34) sts along sleeve raglan edge, incl side edge of neckband. Work in 2 x 2 rib for 4 rows.

Cast off in rib and repeat for other side.

FRONT BUTTONHOLE BANDS

With right side facing and using 4.00 mm needles and M, knit up 24 (26 - 32 - 34) sts along left front raglan edge, incl side edge of neckband.

Row 1: P2, *K2, P2, repeat from * to end.

Row 2: K2, *P2, K2, repeat from * to end.

Row 3: Rib 1 (2 - 3 - 2), Rib2tog, yo, *rib 3 (3 - 4 - 5), rib2tog, yo, rep from * to last 1 (1 - 2 - 2) st/s, rib 1 (1 - 3 - 2) ... 4 buttonholes.

Row 4: As Row 2.

Cast off in rib and repeat for other side, reversing the placement of the buttonholes.

FINISHING

Join side and sleeve seams. Sew on buttons and weave in all ends. Embroider bear face on front of sweater using the black embroidery thread and following the colour chart as a guide.

ITEM A: Back of Sweater**ITEM B:** Front of Sweater

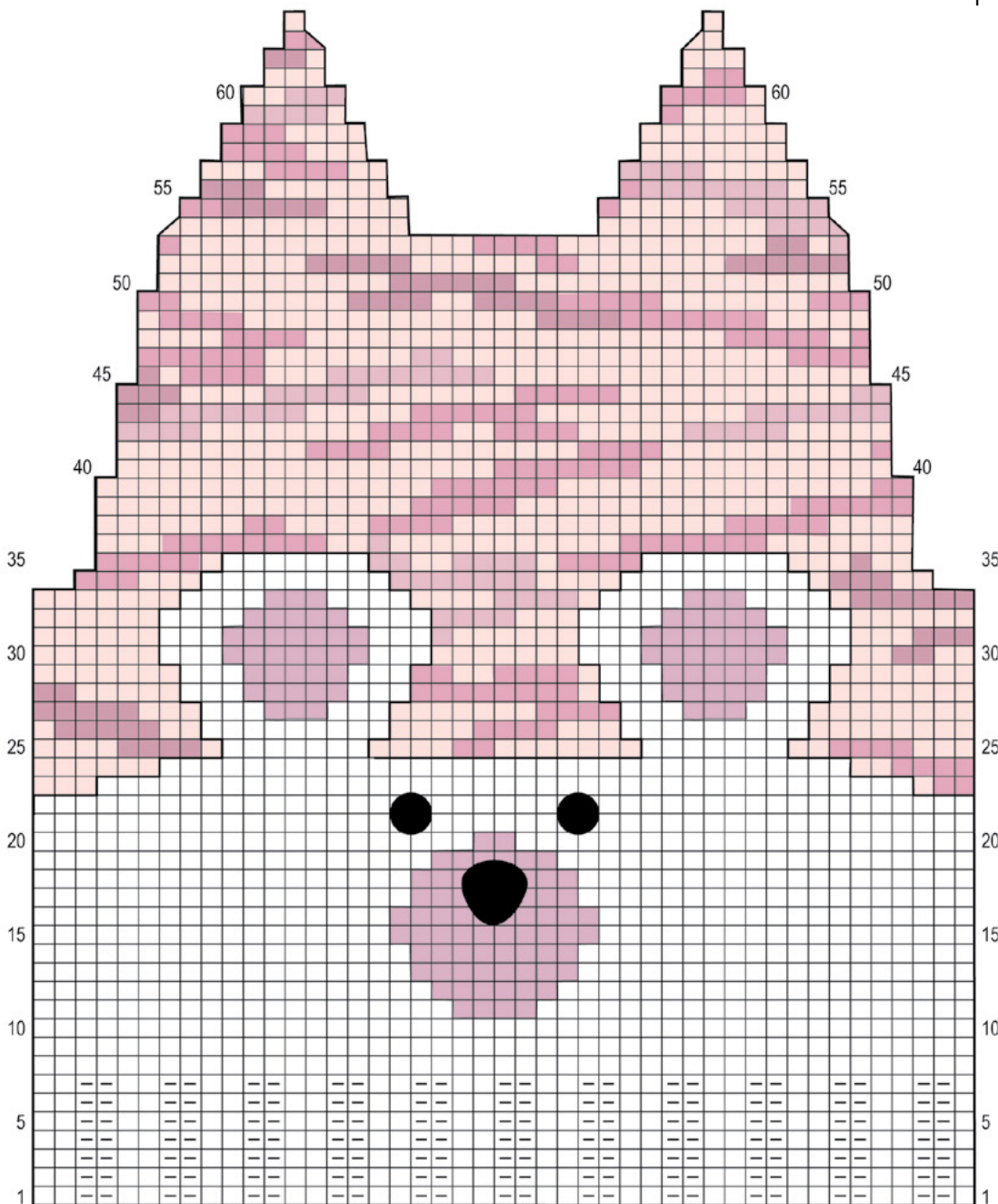
#P023

Baby Soft 8ply Peeking Bear Sweater

INTERMEDIATE KNIT

COLOUR CHART (0 MONTHS) Bear Face on Front

Work all the stitches in the colour and stitch type according to the key below. RS rows are read from right to left and WS rows are read from left to right. Numbers along the sides of the chart correspond to row numbers in the pattern. Work decreases as they are written in the pattern.

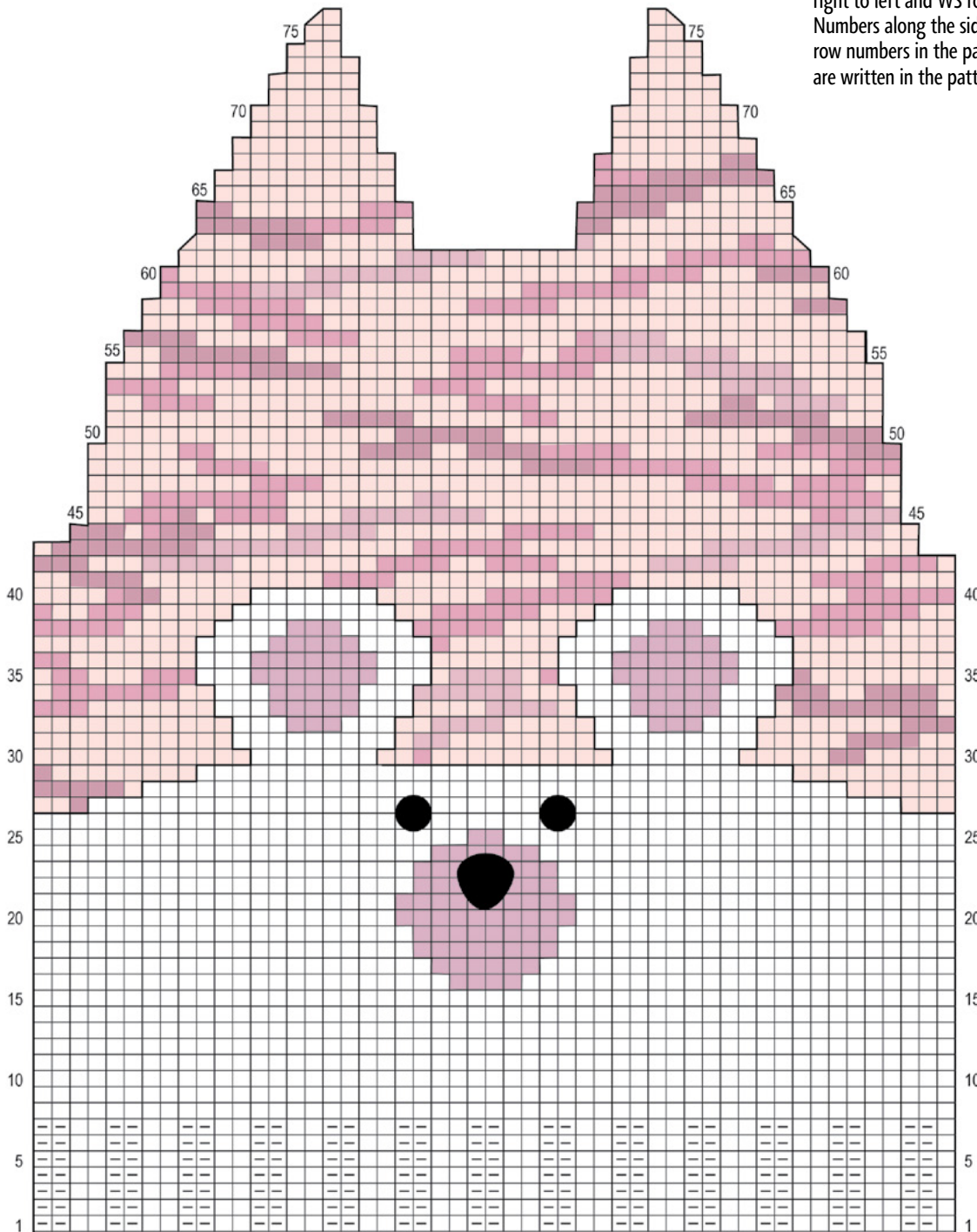


COLOUR & STITCH KEY

-  = RS Knit, WS Purl
-  = RS Purl, WS Knit
-  = Main Colour (M)
-  = Contrast Colour 1 (C1)
-  = Contrast Colour 2 (C2)

COLOUR CHART (3 MONTHS)
Bear Face on Front

Work all the stitches in the colour and stitch type according to the key below. RS rows are read from right to left and WS rows are read from left to right. Numbers along the sides of the chart correspond to row numbers in the pattern. Work decreases as they are written in the pattern.



COLOUR & STITCH KEY

-  = RS Knit, WS Purl
-  = RS Purl, WS Knit
-  = Main Colour (M)
-  = Contrast Colour 1 (C1)
-  = Contrast Colour 2 (C2)

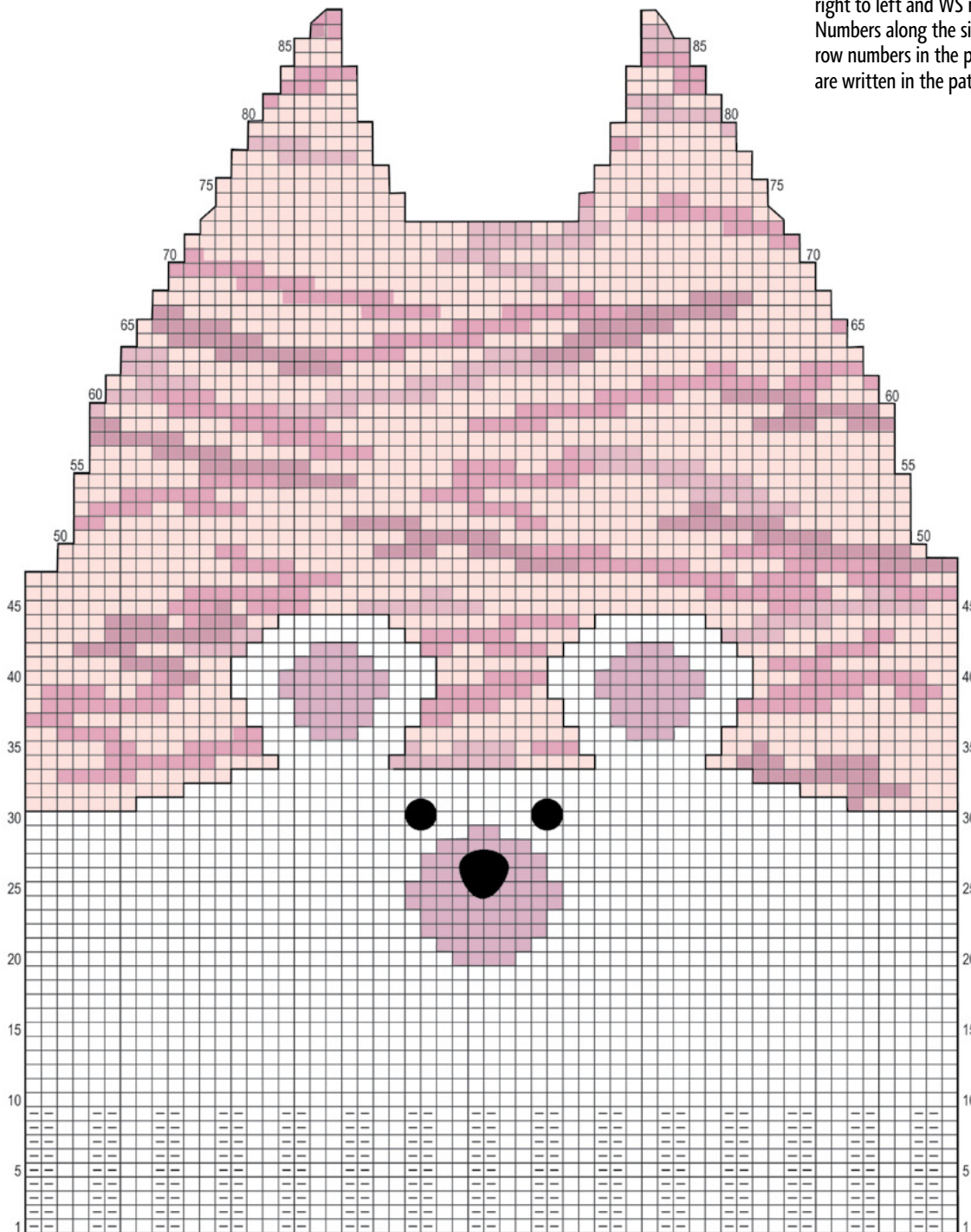
#P023

Baby Soft 8ply Peeking Bear Sweater

INTERMEDIATE KNIT

COLOUR CHART (6 MONTHS) Bear Face on Front

Work all the stitches in the colour and stitch type according to the key below. RS rows are read from right to left and WS rows are read from left to right. Numbers along the sides of the chart correspond to row numbers in the pattern. Work decreases as they are written in the pattern.



COLOUR & STITCH KEY

-  = RS Knit, WS Purl
-  = RS Purl, WS Knit
-  = Main Colour (M)
-  = Contrast Colour 1 (C1)
-  = Contrast Colour 2 (C2)

#P023

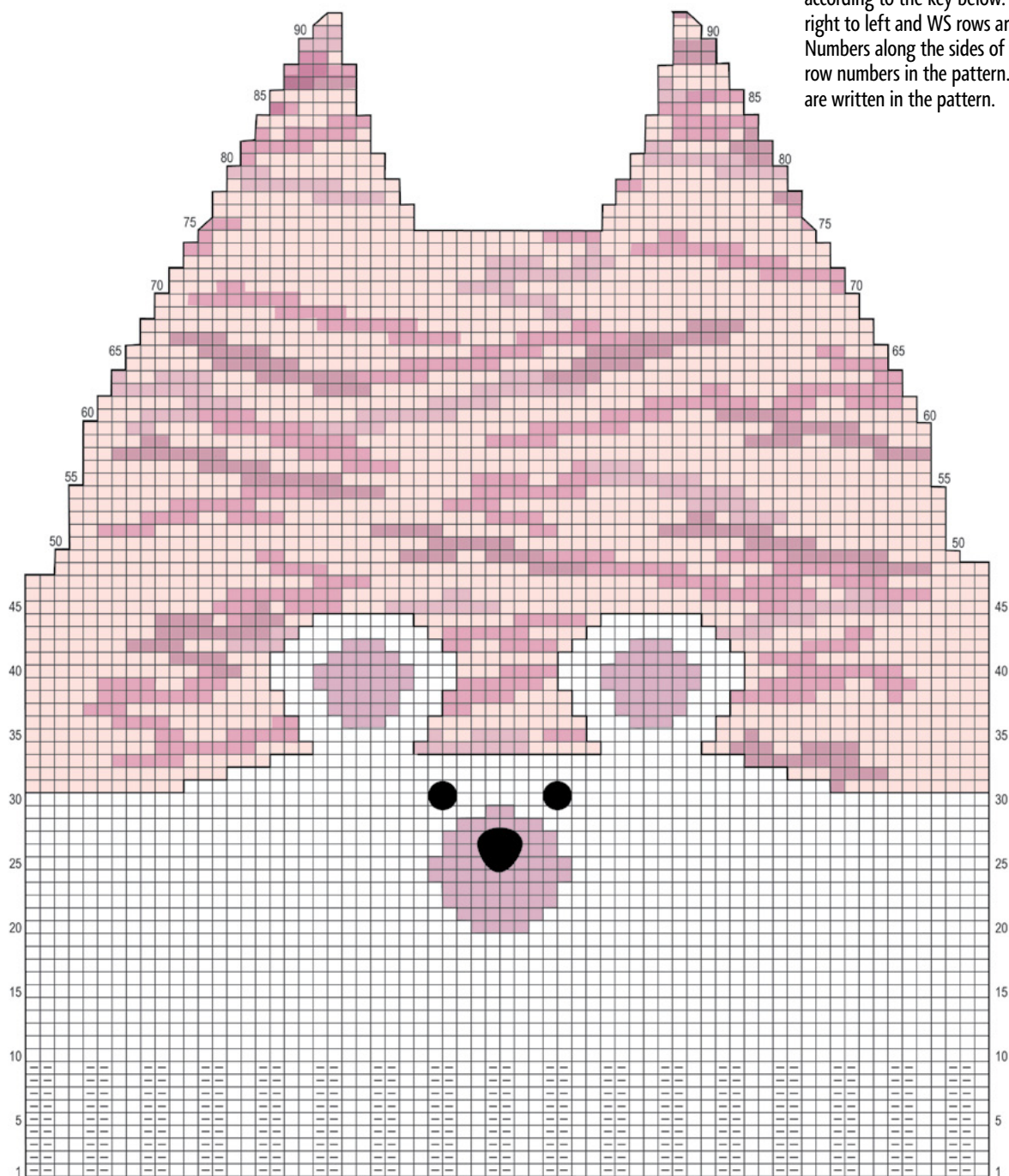
Baby Soft 8ply Peeking Bear Sweater

INTERMEDIATE KNIT

COLOUR CHART (12 MONTHS)

Bear Face on Front

Work all the stitches in the colour and stitch type according to the key below. RS rows are read from right to left and WS rows are read from left to right. Numbers along the sides of the chart correspond to row numbers in the pattern. Work decreases as they are written in the pattern.



COLOUR & STITCH KEY

-  = RS Knit, WS Purl
-  = RS Purl, WS Knit
-  = Main Colour (M)
-  = Contrast Colour 1 (C1)
-  = Contrast Colour 2 (C2)