

how to
make

Lincraft



Christmas Napkin

#A692

DIFFICULTY ●●●

Approximate Time of Project: 2 hours

MATERIALS:

Linen
Thread
8ply cotton

EQUIPMENT:

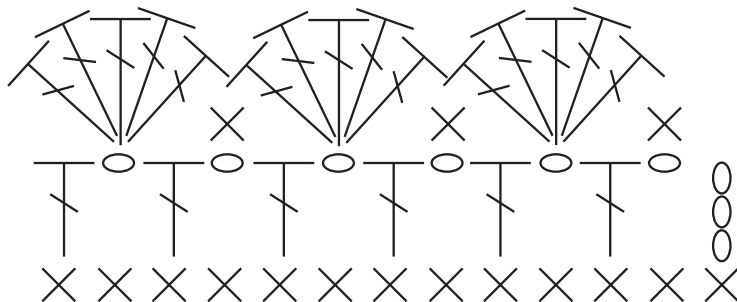
Fabric scissors
Iron
Pins
Sewing machine
Wool needle
4mm crochet hook

STEPS


1. Cut linen to 50x35cm.
2. Create a 1cm double fold hem on all sides. Press, pin and sew.
3. Using the cotton, blanket stitch around the edge of the linen.
4. Double crochet around all sides, roughly 2 stitches in each blanket stitch.
5. On the two shorter sides follow the attached crochet chart to create a simple lacy edge.


1st row: 4ch (counts as tr and 1 ch), *tr, 1ch in next stitch rep from * to end.

2nd row: *dc in first st, leave st, 5tr in next st, leave st, rep from * to end.
6. Sew in all ends.



 Chain stitch (ch)

 Double crochet (dc)

 Treble crochet (tr)

