

how to  
make

Lincraft



Christmas Felt Elf

#A584

## DIFFICULTY ●●●

**Approximate Time of Project:** 2+ hour

## MATERIALS

Cream felt  
Green felt  
Red felt  
White felt  
Small amount of yellow and black felt  
Polyester fill  
DMC thread – red, yellow, black, green

## EQUIPMENT

Elf template  
Scissors  
Hand sewing needle

## STEPS

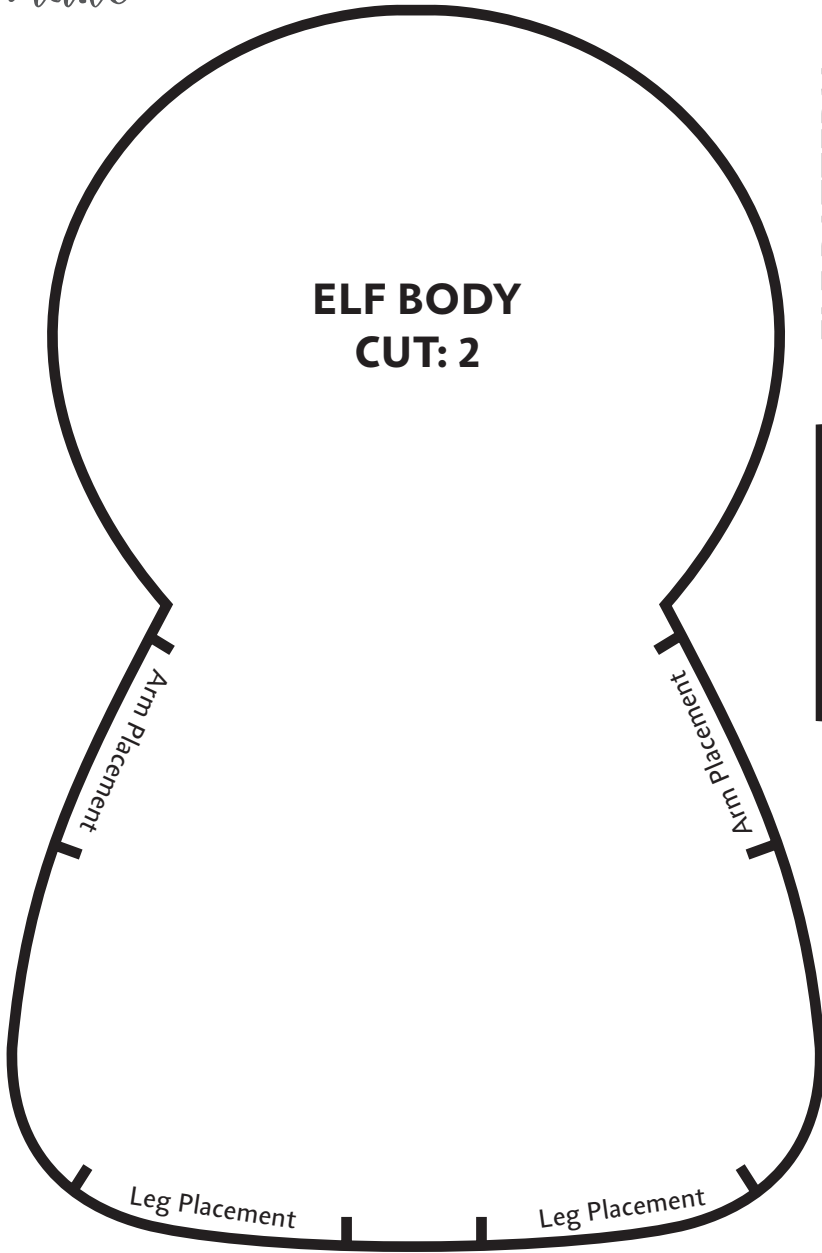
1. Cut out the following shapes from the felt:

Cream – head and hands.  
Green – body, arm and legs.  
Red – collar  
Brown – hair (front and back)  
Black – boots and belt

2. Stitch on the black boot onto all the leg pieces. Stitch on the hand onto all arm pieces.
3. With right sides together, place an arm as noted on the pattern and hand stitch into place with two strands of green DMC thread. Repeat for all arm and legs. Place one body shape to the side, this will be back of the feltie.
4. Sew front and back heads to body. Place and sew hair on correct sides.
5. Slide the belt through the yellow belt buckle. Stitch belt and buckle to front of the feltie.


6. Stitch the collar onto the front and back of the body.
7. Back stitch the eyes and mouth on the face as marked on the pattern.
8. Place the front and back body place wrong sides together. Blanket stitch around the edges, match the thread with the colour of the felt. Leave a small gap for stuffing.
9. Fill the Elf with polyester fill. Blanket stitch the gap close.

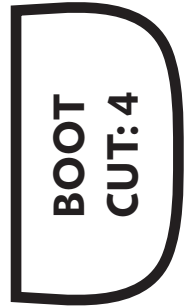




**ELF BODY  
CUT: 2**

**ELF PATTERN**

KEY	
	CUTTING LINE



**BOOT  
CUT: 4**



**HAND  
CUT: 4**

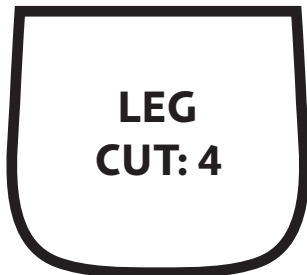


how to  
make

Lincraft



**BACK HAIR  
CUT: 1**



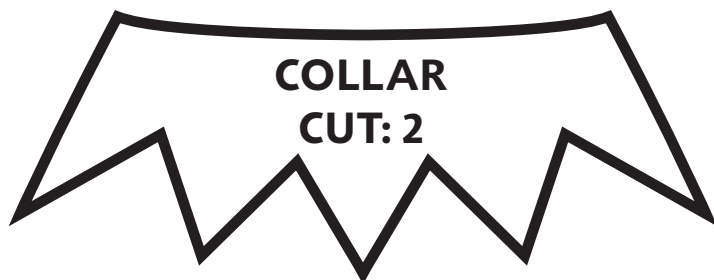
**LEG  
CUT: 4**



**FRONT HAIR  
CUT: 1**

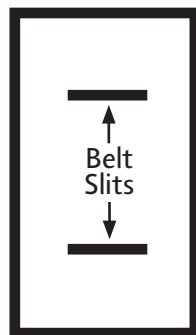


**ARM  
CUT: 4**



**COLLAR  
CUT: 2**

**BELT BUCKLE  
CUT: 1**



**BELT  
CUT: 2**

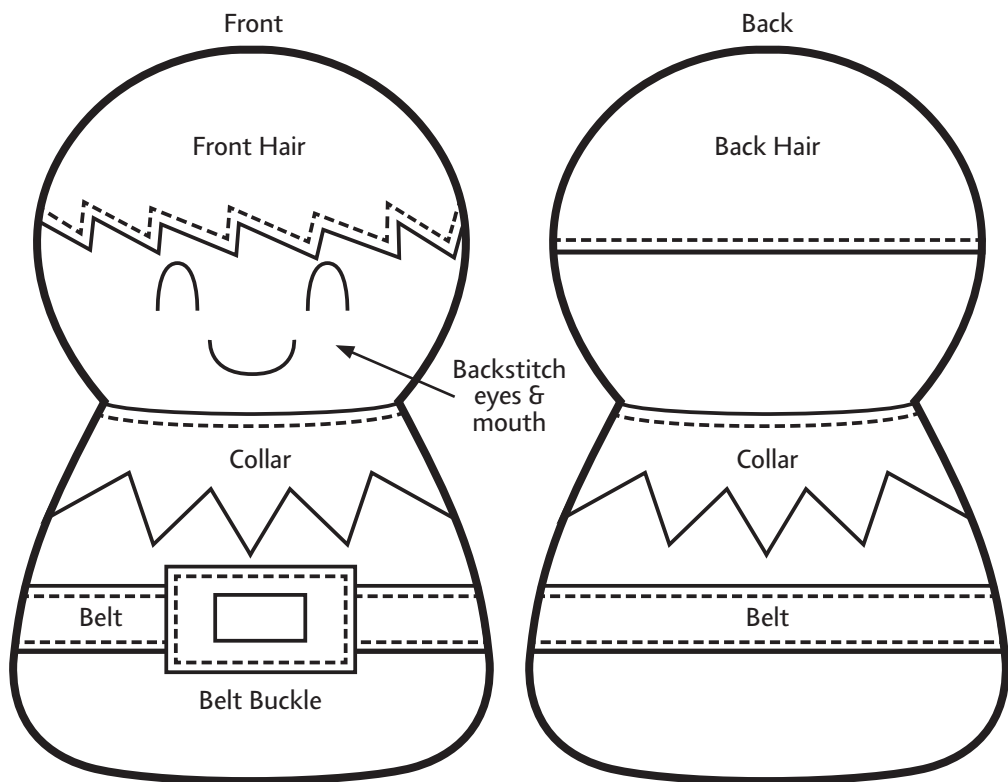


Christmas Felt Elf

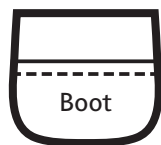
#A584

# ELF PLACEMENT OF PIECES ON FRONT AND BACK

KEY	
———	PLACEMENT OF PIECES
-----	STITCH LINE



Leg (both sides)



Arm (both sides)

