

how to  
make

Lincraft



Felt Teapot Cosy

#A650

## DIFFICULTY ●●●

**Approximate Time of Project:** 1 hour

## MATERIALS

Felt  
Thin wadding  
Thread

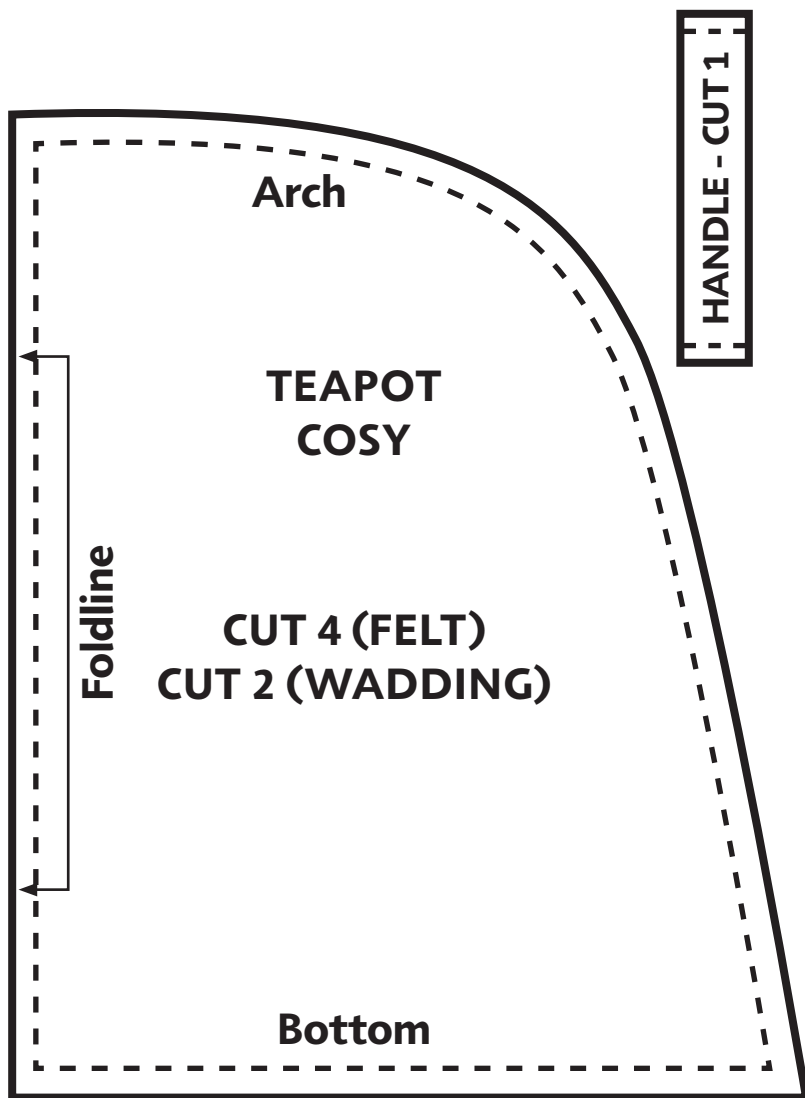
## EQUIPMENT

Fabric scissors  
Sewing machine

## STEPS

1. Cut out four Cosy shapes and the Handle from felt.
2. Cut out two Cosy shapes from the wadding.
3. First two felt shapes:
  - a. Pin wadding to two felt Cosy shapes.
  - b. Sew around all sides.
  - c. Pin the two Cosy shapes (with wadding attached) together, felt sides touching.
  - d. Sew around the Arch. Set aside.
4. Second two felt shapes:
  - a. Pin the second two felt shapes together.
  - b. Fold the Handle in half lengthways and pin inside the top of the cosy, between the layers, so the ends will be caught in seaming.
  - c. Sew around the Arch. Turn right side out.
5. Pin the second felt shape inside the wadding covered shape. Right sides will be touching.
6. Sew around the Bottom leaving a 5cm gap in seaming.
7. Pull the piece right side out through the gap.
8. Sew up the gap.





Print out on A4 paper

