

how to  
make

Lincraft



Large Dog Raincoat

#A722

## DIFFICULTY ●○○

**Approximate Time of Project:** 1 hour

**Size:** Large - X Large

## MATERIALS

Raincoated poplin  
Homespun cotton (complementary colour to poplin)  
Thread (complementary colour to Homespun)  
Fabric glue  
5m bias binding (complementary colour to Homespun)  
20mm wide hook and loop tape

## EQUIPMENT

Fabric scissors  
Pins  
Sewing machine  
Dressmaker pencil

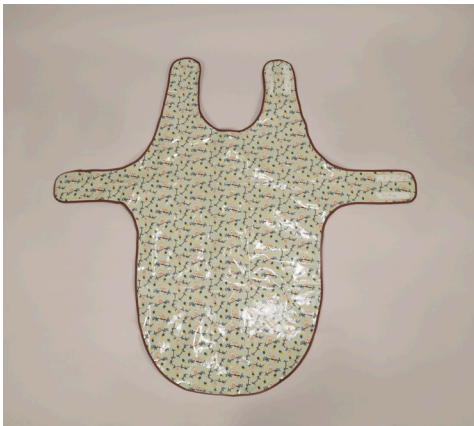
## HELPFUL HINTS

- Print off the pattern pages on A3 paper and tape them together so the markers along the lines meet up to create the shapes.
- 1cm seam allowance included.
- In *Step 4* it is important that the scratchy hook side of the hook and loop tape is kept on the outer side of the coat to prevent it rubbing and chafing your dog's skin. The softer loop side of the hook and loop tape is fixed to the inside lining.

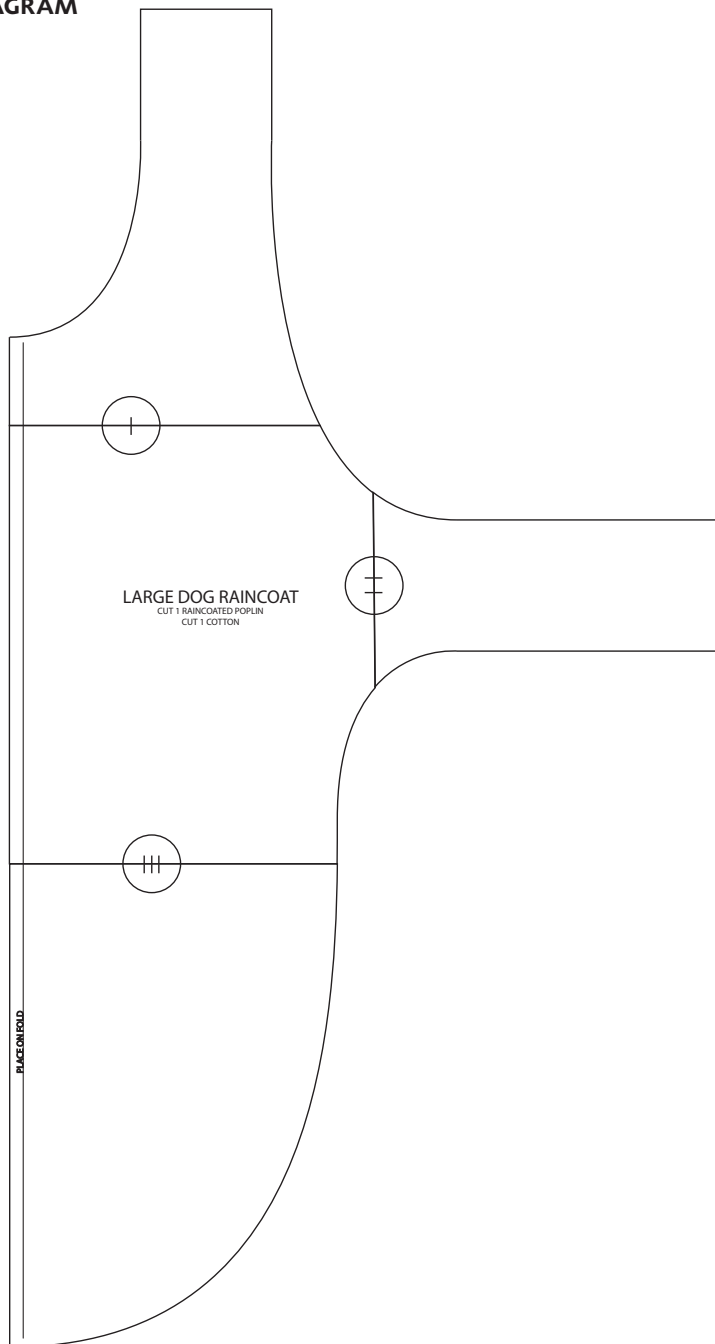
## STEPS

1. Cut all pieces using the pattern templates.
2. Pin the shapes together so right sides face out.  
Sew around the edge.
3. Trim excess near stitching.
4. Secure hook and loop tape (see flat lay images for reference);
  - a. Cut four 10cm lengths of hook and loop tape.
  - b. Pin the hook tape to the coated poplin side of the coat on the two right side strips. Sew in a rectangle to secure them to the coat.
5. Sew bias binding around all remaining raw edges folding the binding in on itself at the ends to create clean seams.
  - a. Pin loop tape to the cotton side of the coat on the opposite two strips. Sew in a rectangle to secure them to the coat.





**PATTERN TEMPLATE DIAGRAM**  
(NOT TO SCALE)



Large Dog Raincoat

#A722



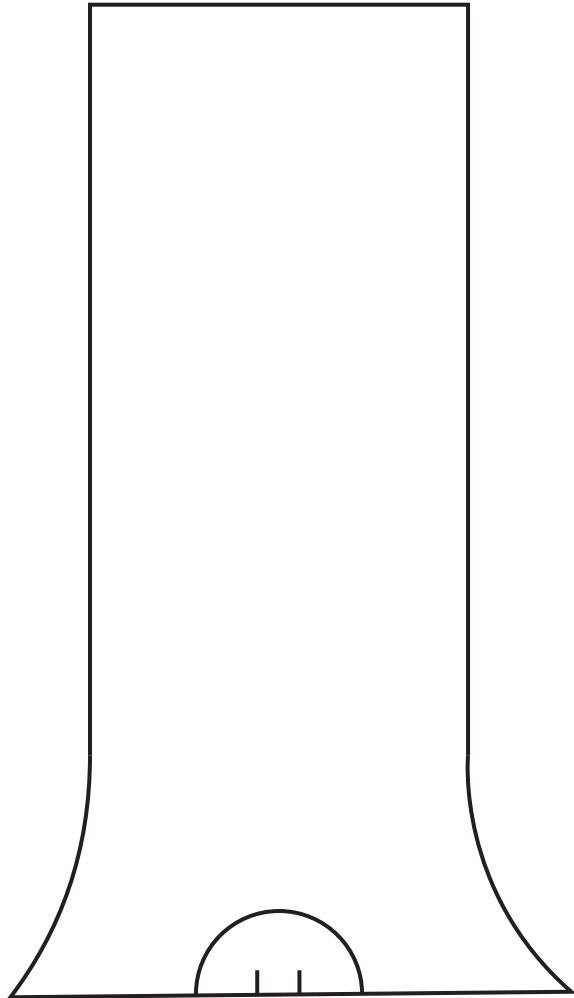
# LARGE DOG RAINCOAT

CUT 1 RAINCOATED POPLIN

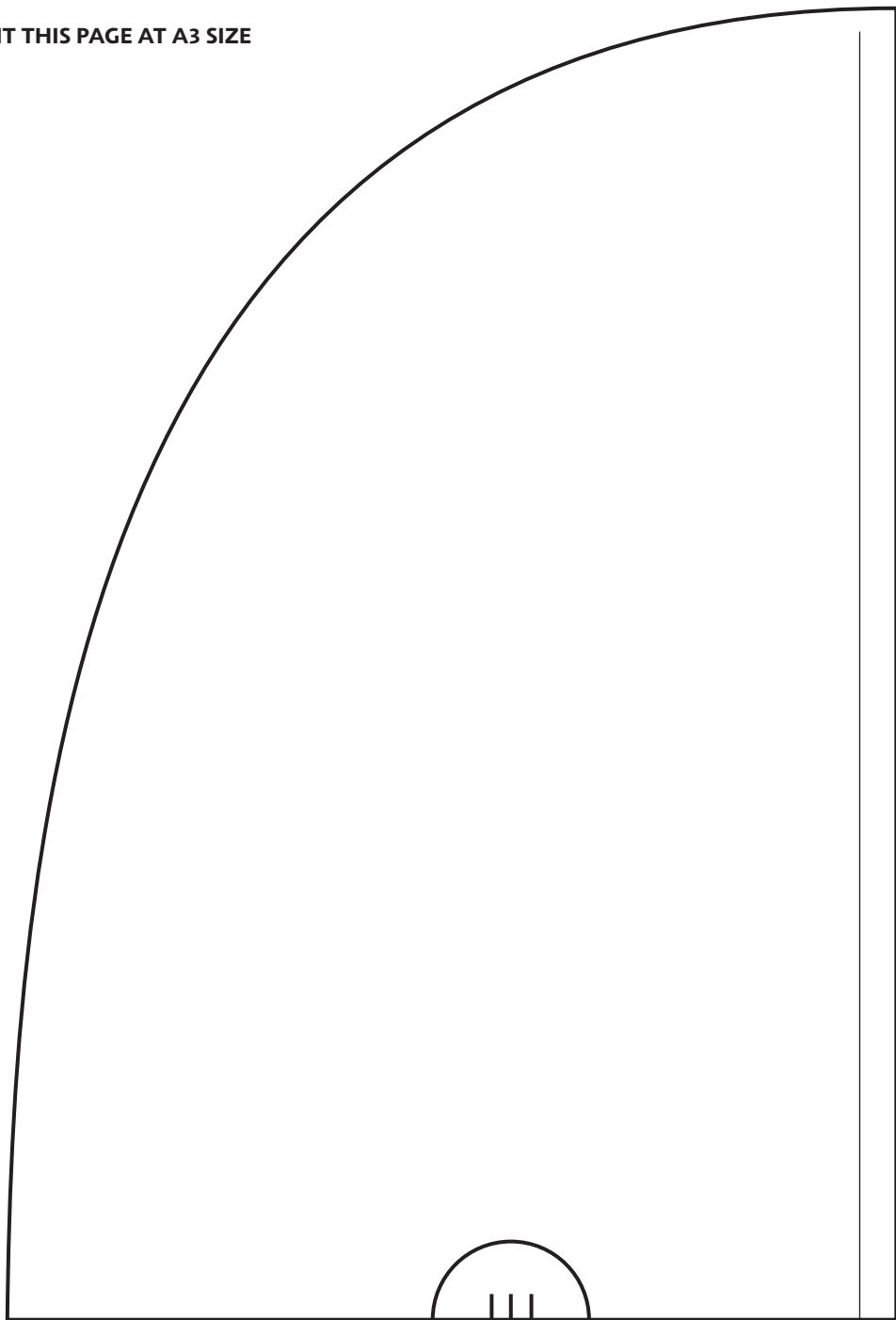
CUT 1 COTTON

PLACE ON FOLD





PRINT THIS PAGE AT A3 SIZE



Large Dog Raincoat

#A722

