

how to
make

Lincraft



Christmas Apron

#A560

DIFFICULTY ● ● ●

Approximate Time of Project: 2+ hour

MATERIALS

1m red chino drill
10cm of black felt
15cm white fabric
Yellow felt sheet
Matching thread
3 x large buttons

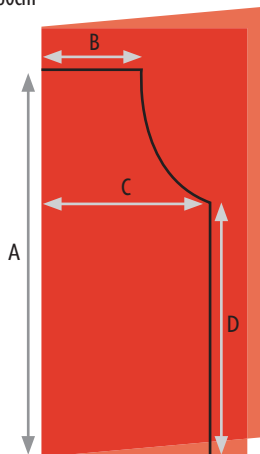
EQUIPMENT

Fabric Scissors
Tape measure
Quilters pencil
Sewing machine
Pins

Note: Please read all instructions before starting the project. Prewash and iron all fabric before starting.

STEPS

1. Fold the red fabric in lengthwise and draw the following measurements.
 - A – 90cm
 - B – 15cm
 - C – 30cm
 - D - 60cm



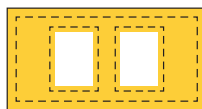
2. Cut the following strips of fabric:
 - 2 x 90cm by 8cm
 - 1 x 60cm by 8cm

Fold and press both edges of each strap under 1cm. Fold each strip in half, press into place. Stitch close the edges of each handle.

3. Cut a strip of black felt that is 8cm and as wide as the apron.
4. Cut two rectangles 12cm x16cm of yellow felt. Place together and stitch around the edges.



5. Draw two 5cm x 8 cm in the centre of the yellow felt. Stitch around the lines. Cut out the felt in the centre of each small rectangle.



6. Slip one end of the felt through one of the rectangles and then the other. Pin the belt to the apron. Stitch to apron with matching thread.
7. Cut a 9cm strip of white fabric and place at the top of the apron. Fold over the edge on the apron, pin into place. Cut extra excess fabric and stitch into place.
8. Cut a rectangle of white fabric and place at the bottom of the apron. Fold over the edge on the apron, pin into place. Cut extra excess fabric and stitch into place.
9. Make a rolled hem on all edges of the apron. Slide the neck strap and ties under the hem.
10. Stitch rolled hem, ensuring that the ties and neck strap are well secured into place.

