

Lincraft

Inspiring Creativity



#A782

Oversized Jumper

EASY

DIFFICULTY ●●●**MATERIALS**

- 2.7m Polar fleece (145cm width)
or 3.4m flannelette (108cm width)
- Ribbing fabric
- Thread bobbins
- Yarn (matching colour to the lining)

EQUIPMENT

- Scissors
- Thread
- Pins
- Overlocker
- Sewing machine
- Twin stretch machine needle
- Regular machine needle
- Tapestry needle

KNITTING FOR LINING

Follow the free knitting pattern P206 for the lining pattern. You will need:

- 12mm knitting needles
- Wool needle
- Teddy soft yarn

HELPFUL HINTS

- Print all the template pages at "Actual Size" and test using the 3x3cm square. Tape the paper together using the guide provided. Cut the pattern pieces out to use them.
- The knitted lining can be swapped for a flannelette version using the same instructions as the shell.
- The overlocker can be swapped for a straight stitch on a regular machine then zig zag stitch the edges
- Twin stretch needle can be substituted by using a regular single needle for a slightly different look.
- All zig zag stitching should be done with a single needle.

CUT LIST

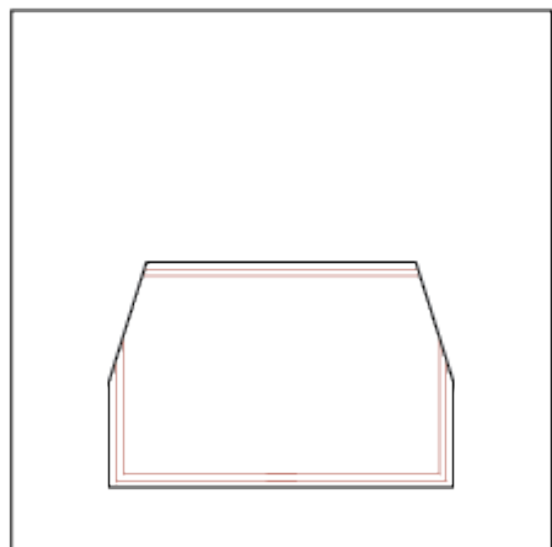
- Polar Fleece:
 - Two 90x90cm squares (FRONT & BACK)
 - Two SLEEVES using the template provided
 - Two HOOD pieces using the template provided
 - One POCKET using the template provided
- Ribbing:
 - Two 20x20cm squares (CUFFS)

STEPS

1. Knit your inner lining using the P206 free pattern and use the instructions included to sew the lining together.
2. Sew the pocket;
 - a. Serge around the edge of the pocket.
 - b. Pin the edges under to create a 1cm hem.
 - c. Using the twin needle sew over the slanted edge hem to secure.

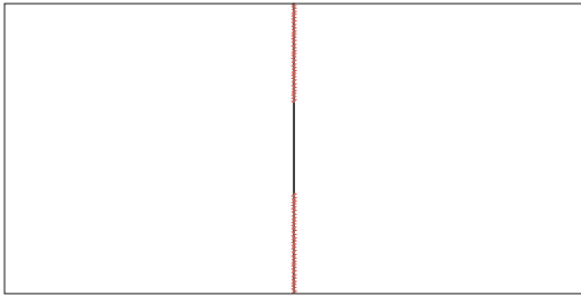


- d. Mark 12cm from the bottom of the front square piece.
- e. Centre the pocket on the square so the bottom of the pocket aligns with the 12cm marking.
- f. Pin the pockets down keeping the hem turned under.
- g. Sew the pocket down along the remaining sides using the twin needle.

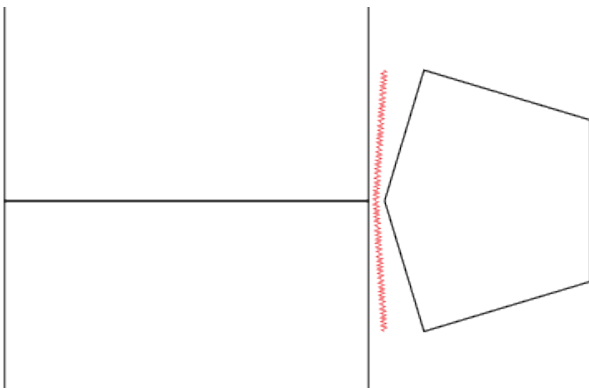


3. Make the outer shell;

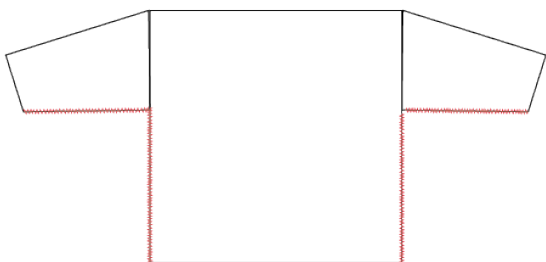
- a. Pin the two squares right sides together at the top corners and sew 30cm along either side of the top.



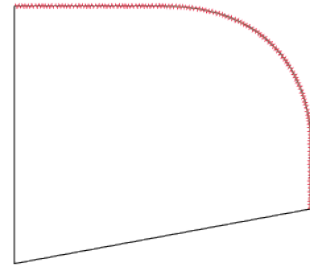
- b. Lay the squares out flat, right side up.
c. Pin the sleeves to the squares by matching the centre fold of the longest edge of the sleeve to the sewn shoulder seam and pinning out from there, right sides together.
d. Serge the pinned edge together.



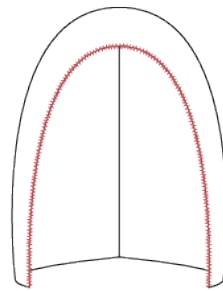
- e. Repeat steps C and D with the other sleeve on the other side.
f. Fold the piece in half lengthways, right sides together and pin along the side and under arm seams.



- g. Serge the pinned edges together.
h. Pin the two hood pieces right sides together along the marked edge.



- i. Serge the pinned edge together.
j. Serge around the marked front of the hood



- k. Pin under the serged opening of the hood to create a 1cm hem.
l. Using the twin needle sew over the hem to secure.
m. Line up the seam of the hood with the centre top of the back piece.
n. Pin out from the centre so right sides are together.
o. When you reach the shoulder seam begin pinning the hood to the front piece. The hemmed edge should touch at the centre front of the jumper.
p. Serge the pinned edge.
q. Serge the raw edge at the bottom of the jumper.
r. Pin under the serged edge to create a 1cm hem.
s. Using the twin needle sew over the hem to secure.

4. Add the cuffs;

- a. Fold the cuffs right side together parallel to the rib.
b. Serge the edges together to create a 10x20cm tube.
c. Fold the tube in half on itself, wrong sides together.

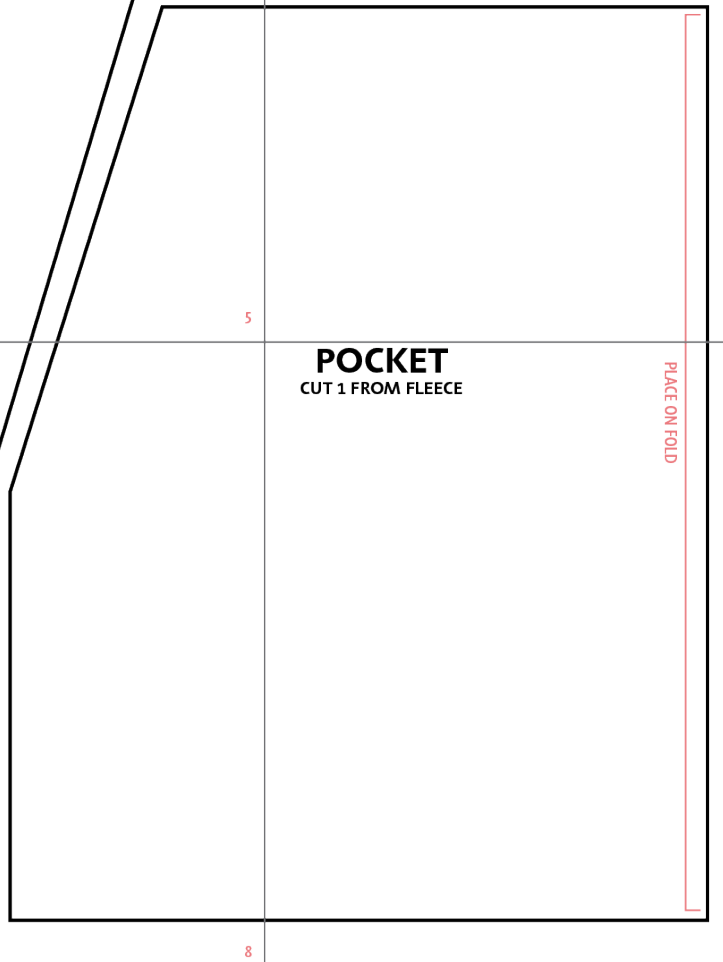
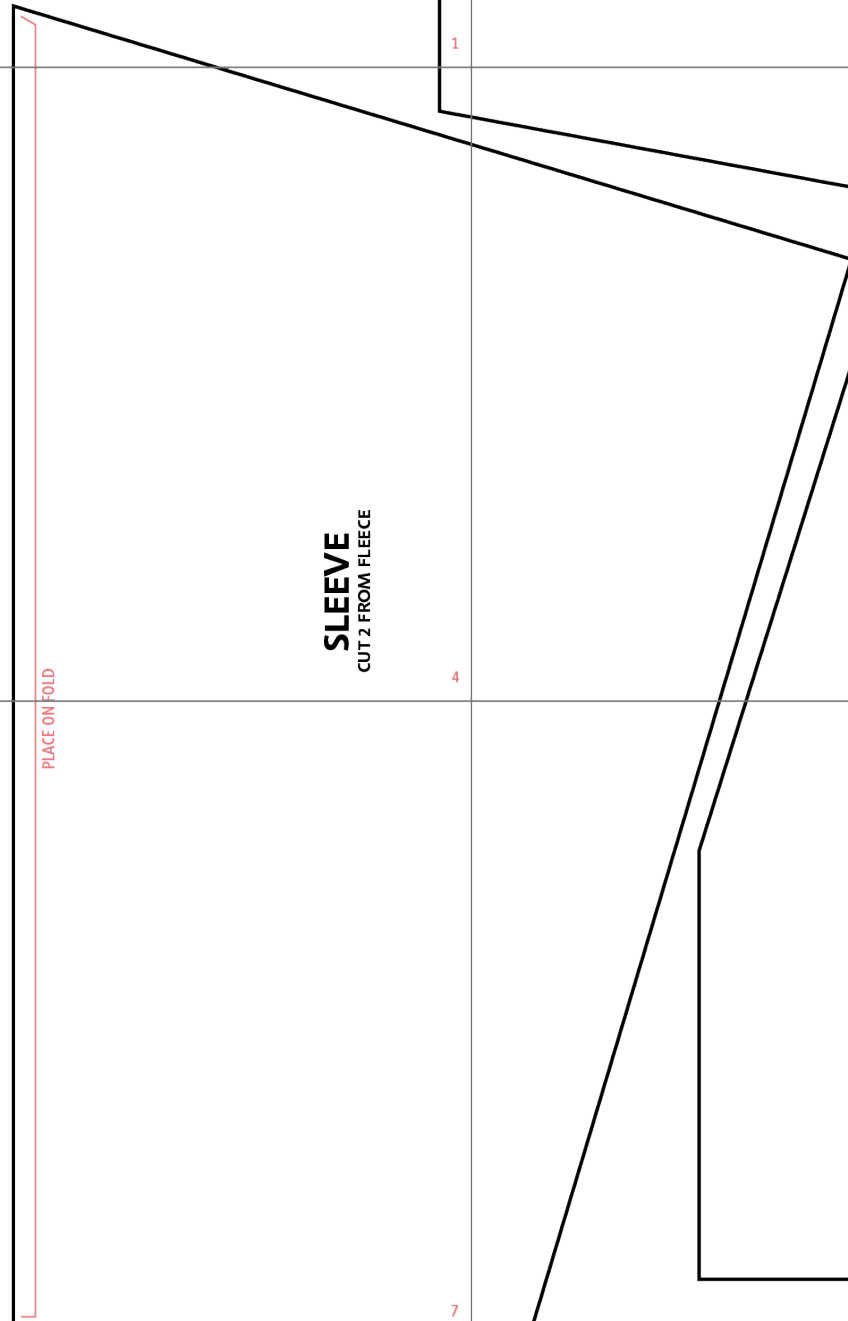
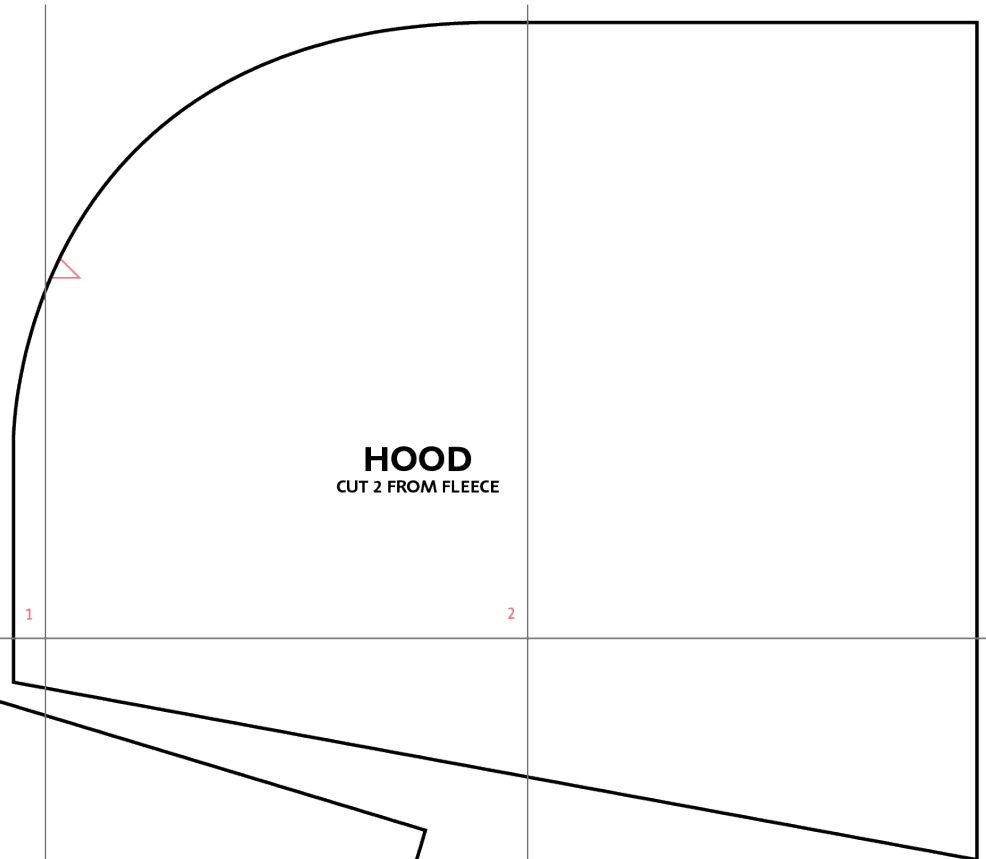


- d. Stitch the raw edges of the tube together with a zig zag stitch.
 - e. Line up the raw edge of the sleeve with the zig zag edge of the tube. With right sides together, pin.
 - f. Zig zag stitch around the pinned edge stretching the ribbing as you go.
 - g. Repeat the above for the second cuff.
5. Sew in the lining;
- a. Put the lining inside the jumper.
 - b. Using the tapestry needle and the coordinating yarn stitch the lining into the jumper serged seams of the jumper.
 - c. Begin by sewing the bottom hem of the jumper, the cuffs and the opening of the hood.
 - d. To hold the lining to the outer shell more securely you can tack in some stitches catching the lining and the serged seam of the shell at points under the arms, at the shoulders, along the side seams and along the centre back of the hood.



**OVERSIZED
JUMPER
PATTERN PIECES**

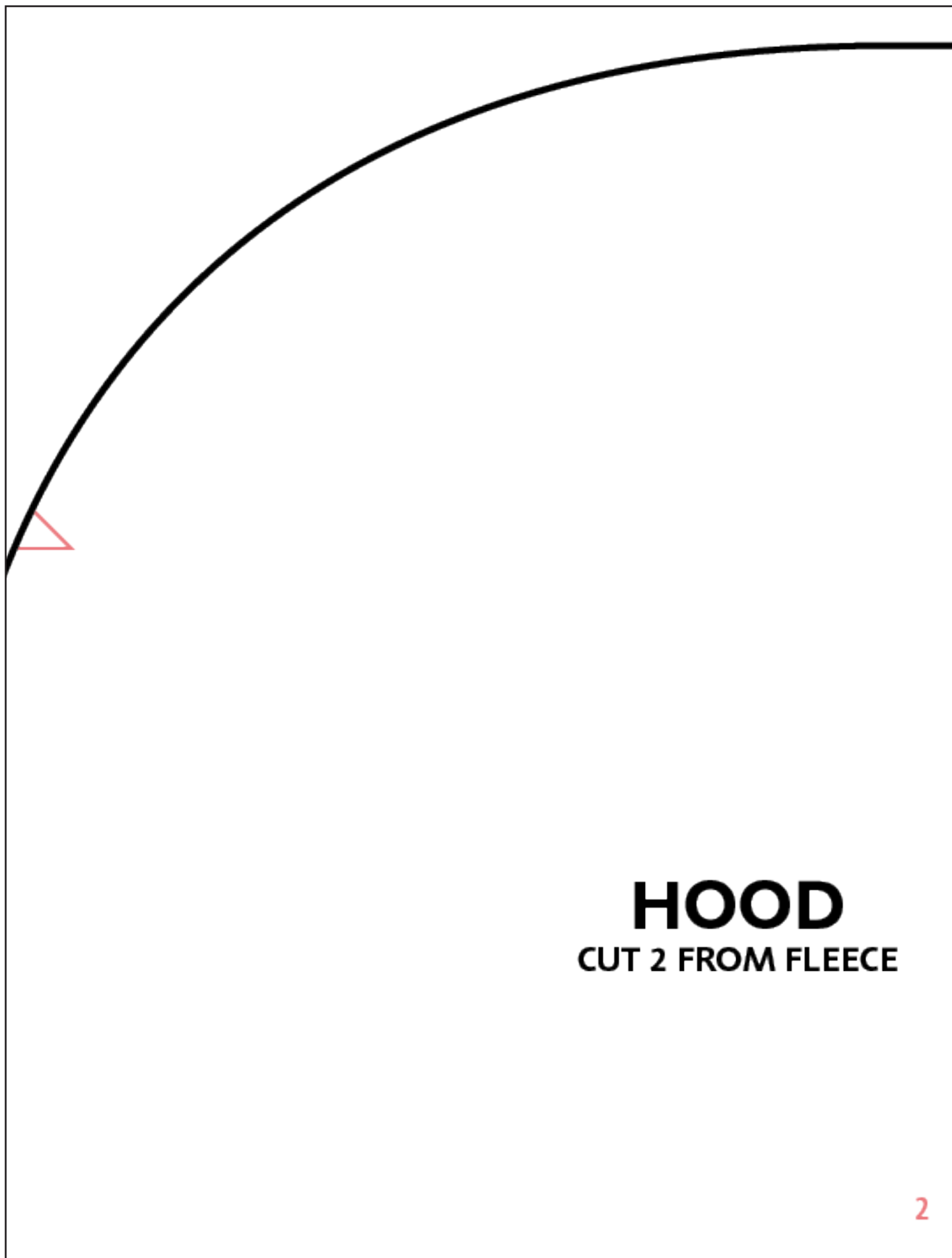
PRINT AT ACTUAL SIZE



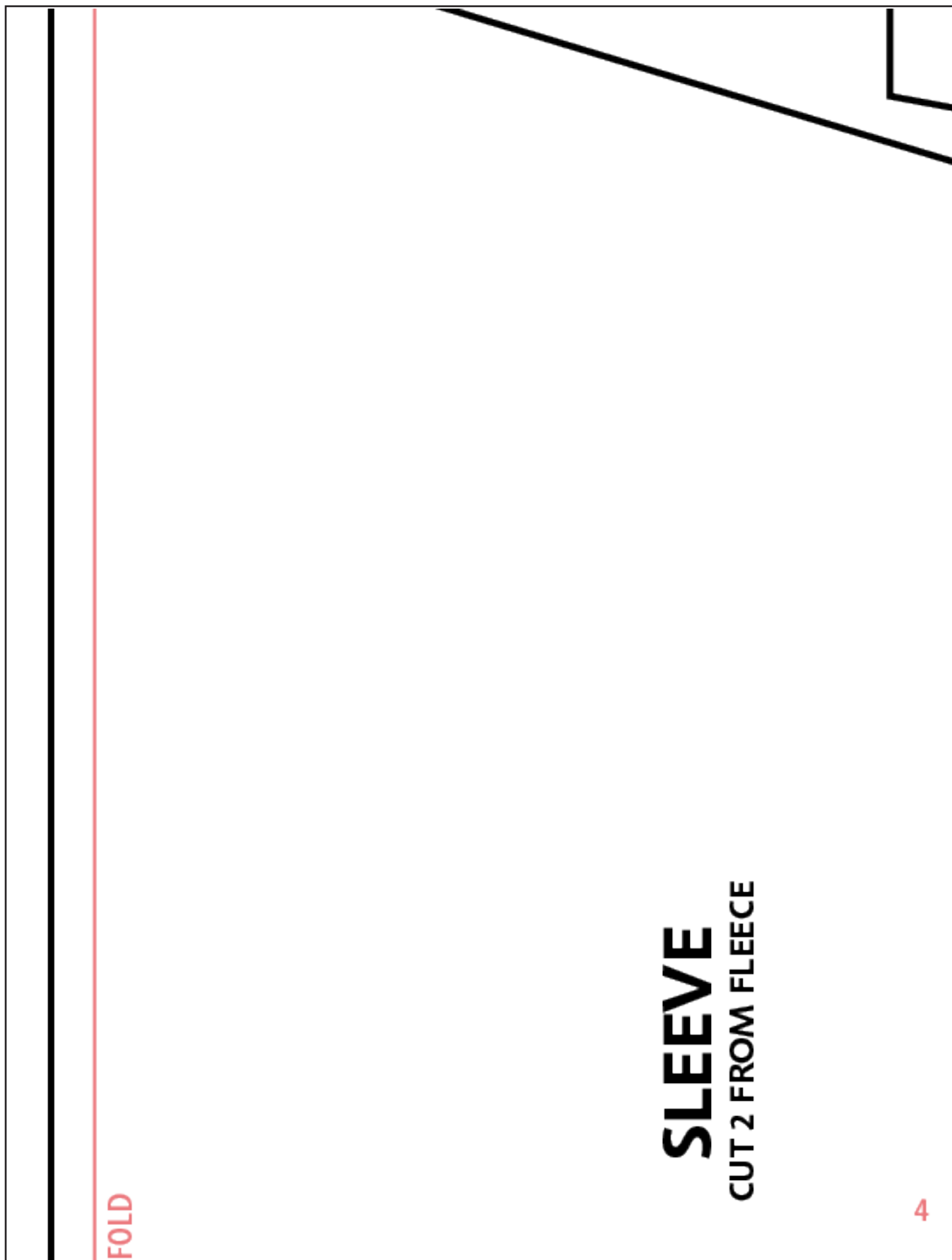
OVERSIZED JUMPER PATTERN PIECES

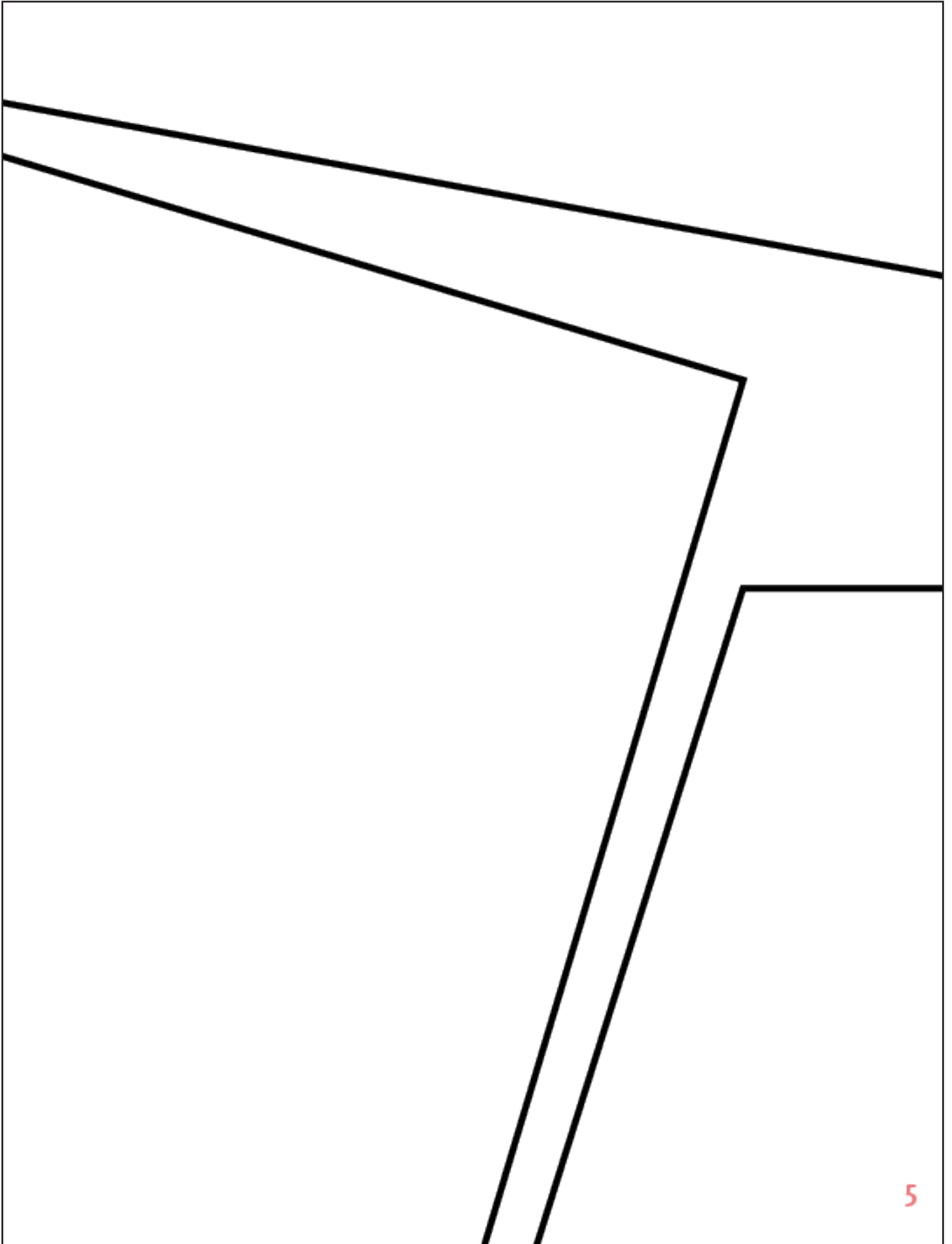
PRINT AT ACTUAL SIZE

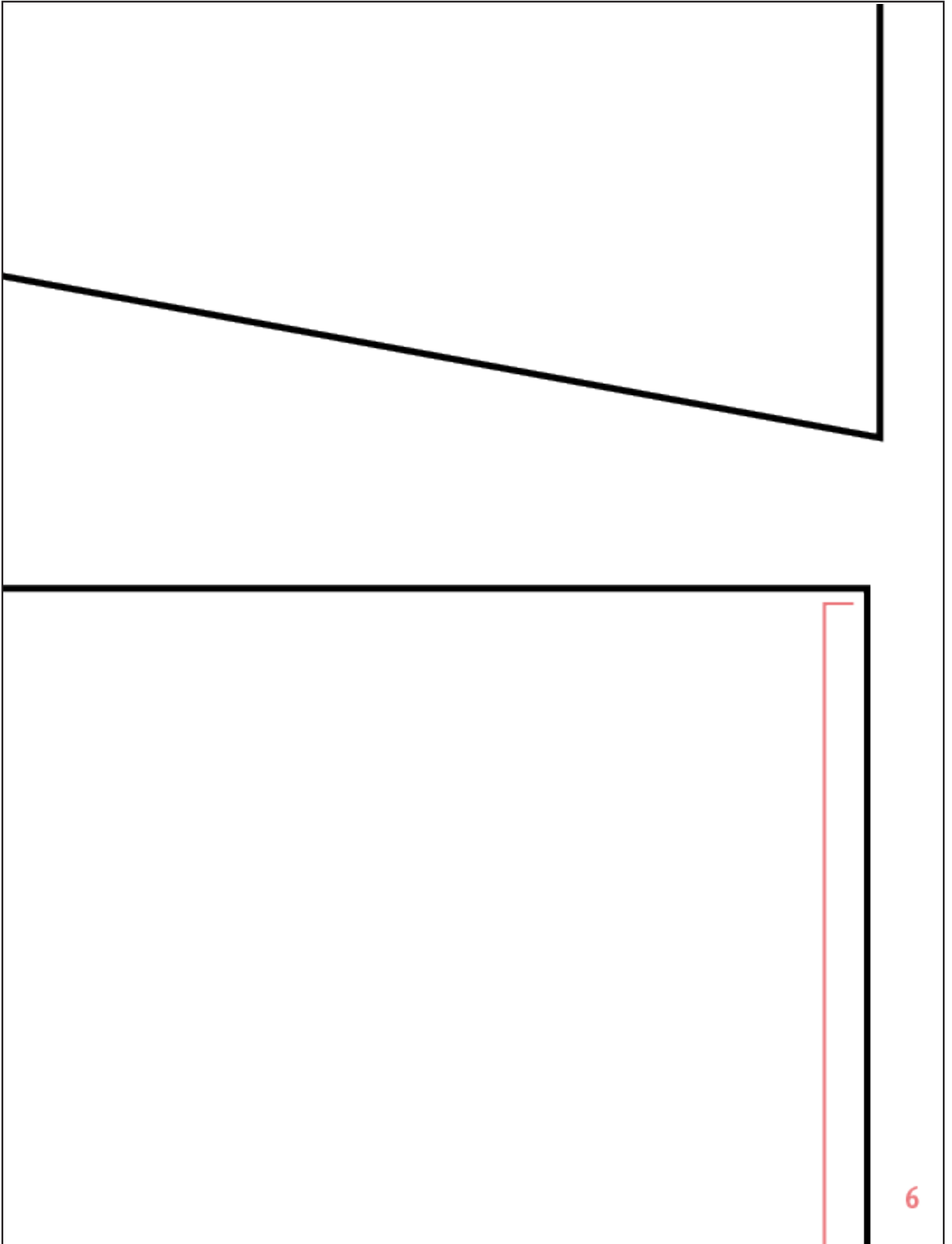
3x3cm



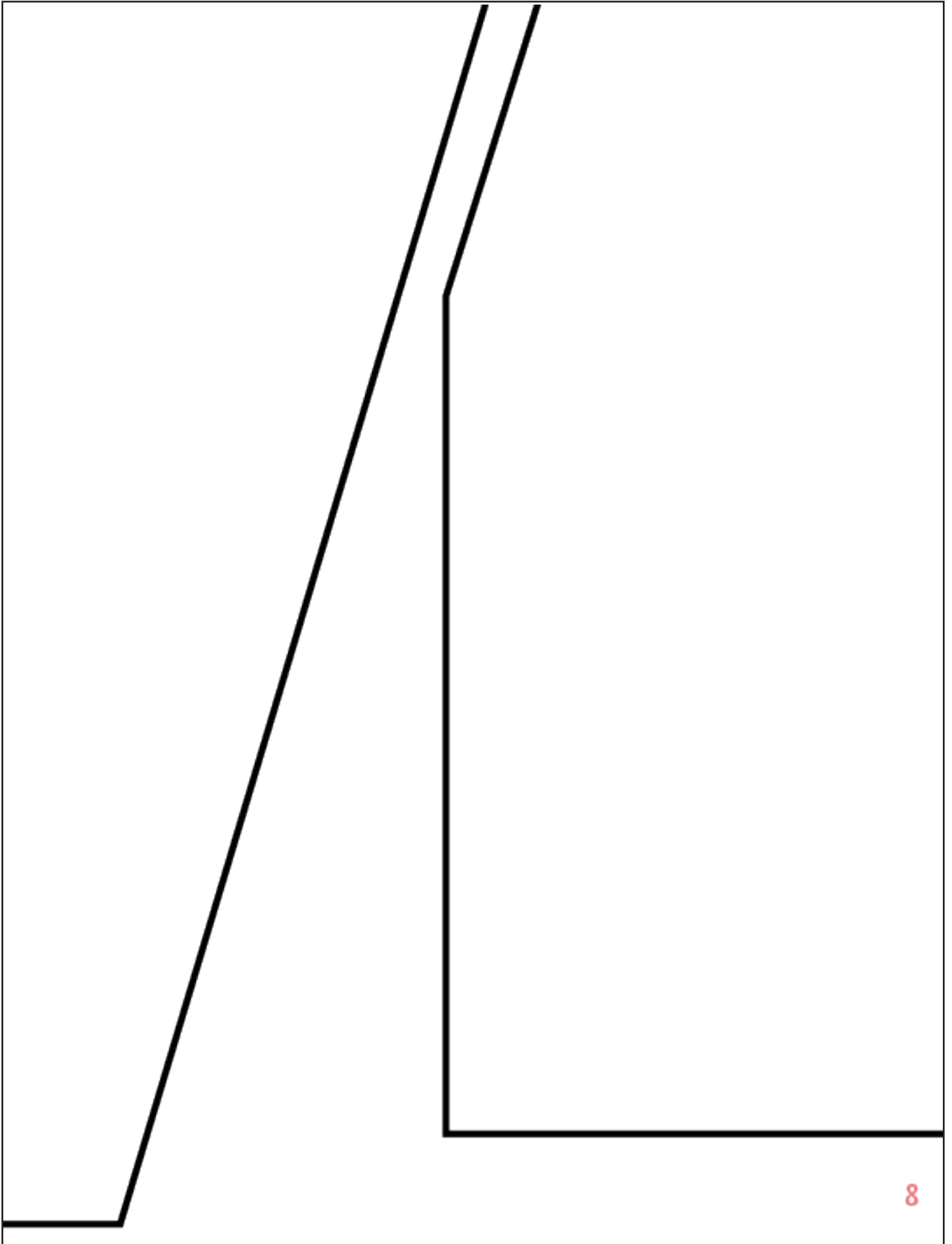
HOOD
CUT 2 FROM FLEECE







PLACE ON



POCKET
CUT 1 FROM FLEECE

PLACE ON FOLD