

how to
make

Lincraft



Santa Face Mask

#A757

PLEASE NOTE: Keep up to date with the latest health advice provided by the Government and the World Health Organisation in regards to cleanliness, hygiene and how to properly wear a mask.

- www.health.gov.au/resources/publications/coronavirus-covid-19-information-on-the-use-of-surgical-masks
- www.health.govt.nz/our-work/diseases-and-conditions/covid-19-novel-coronavirus/covid-19-novel-coronavirus-health-advice-general-public/covid-19-novel-coronavirus-face-mask-and-hygiene-advice
- www.who.int/emergencies/diseases/novel-coronavirus-2019/advice-for-public/when-and-how-to-use-masks
- <https://www.dhhs.vic.gov.au/face-masks-covid-19>

DIFFICULTY ●○○

Approximate Time of Project: 20 minutes

MATERIALS

- 30x20cm poplin (red)
- Faux fur (white)
- Thread
- Elastic

EQUIPMENT

- Fabric scissors
- Sewing machine
- Pins
- Sewing needle
- Dressmaker pen
- Box cutter
- Fray stop
- Fabric glue

HELPFUL HINTS

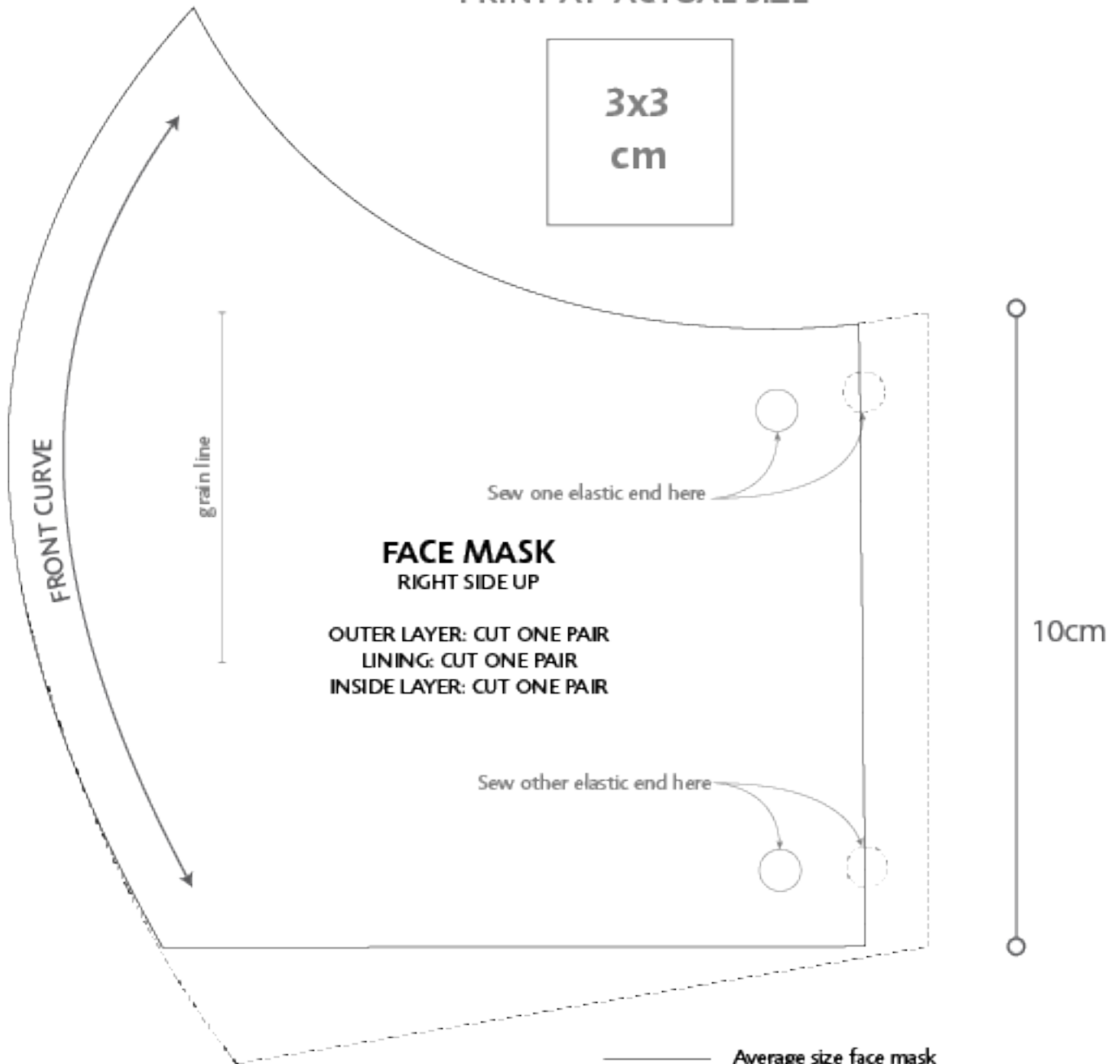
- This mask has three layers of fabric to make it. This will ensure it holds its shape and structure better and provides more protection.
- Print the mask template on A4 paper at "actual size".
- A 10cm piece of wire can be sewn into the edge of the mask where the bridge of the nose is to prevent glasses fogging up while wearing your mask.
- To cut the fur so it keeps its length and shape, turn it over and cut through the back of the fabric (not the fur) with a box cutter.

STEPS

1. Use the CUT GUIDE and template provided to cut out fabric for one mask.
2. Cut two 15cm lengths of elastic.
3. Pin the two printed fabric pieces right side together along the FRONT CURVE and sew the curve.
4. Place two pieces of plain fabric right sides together. Stack the remaining two pieces on either side so they sandwich the first two pieces. Pin and sew through all four layers along the FRONT CURVE.
5. Pin the ends of the elastic to the right side of the printed fabric at the circles marked on the template. Baste so raw edges line up.
6. Open the fabric pieces and place the right sides of plain and patterned pieces together.
7. Pin around edges making sure not to catch the elastic loop and sew leaving a 4cm gap at the bottom of the mask.
8. Turn right side out so print it on one side, plain in the other and elastic loops on either end.
9. Turn the gap in on itself and topstitch around the edge of the mask to secure.
10. Make the beard;
 - a. Mark out the template on the faux fur and cut using the box cutter.
 - b. Run the fray stop along all the raw edges. Allow to dry completely.
 - c. Secure the faux fur to the mask either by tacking with a needle and thread or using fabric glue. Use the diagram provided as a guide for where to place the beard.
 - d. If using glue, allow to dry before wearing.
11. Wash the mask with soap by hand and allow it to dry completely before wearing.
12. Wash your hands, with soap, or use disinfectant with 60% alcohol then pick up make and place it over your mouth and nose catching the loops over your ears to hold.



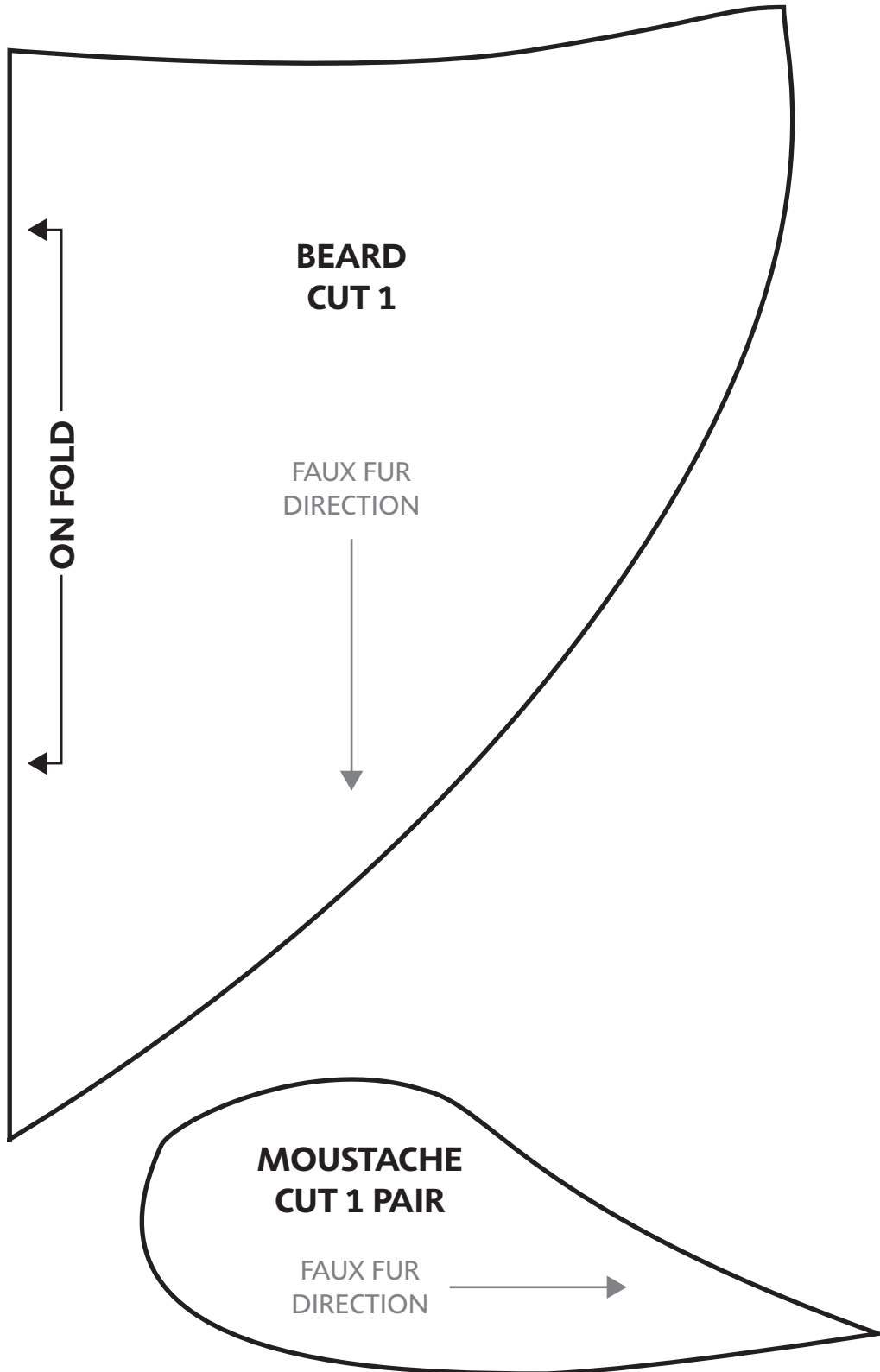
PRINT AT "ACTUAL SIZE"



FACE MASK
RIGHT SIDE UP

OUTER LAYER: CUT ONE PAIR
LINING: CUT ONE PAIR
INSIDE LAYER: CUT ONE PAIR

- Average size face mask
- Larger size face mask



how to
make

Lincraft

