

how to
make

Lincraft



Dinosaur Hooded Cape

#A742

DIFFICULTY ●●○

Approximate Time of Project: 1 hour

MATERIALS

2m Colour A fabric
1.5m Colour B fabric
Thread
Wadding
Muslin
Ribbon

EQUIPMENT

Fabric scissors
Sewing machine
Sewing needle

HELPFUL HINTS

- Choose two contrasting colours of fabric to make the colours pop between the spikes and the cape.
- You can make as many spikes as you want, we made 11.
- Be sure to print the pattern pieces at "actual size" in your printer settings to get the correct size. Use the guide on the following page to tape the pattern pages together before cutting them out.

STEPS

1. Cut out the fabric using the templates provided. Cut two 30cm lengths of ribbon.
2. Sew COLOUR A cape:
 - a. Pin the two halves of the hood right sides together along the *centre curve* seam and sew.
 - b. Pin the cape halves right sides together and sew along the *middle back* seam.
 - c. Pin the top of the cape and the hood right sides together, lining up notches, and sew.
 - d. Set COLOUR A cape aside.
3. Sew spikes:
 - a. Place the muslin on the table and lay the wadding on top. Pin half the spikes, right side up, to the wadding.
 - b. Baste around all edges and cut the spikes out.

- c. Pin one wadding spike and one fabric spike right sides together. Sew along the sides leaving the bottom open.
- d. Trim and turn right side out so the wadding is in the middle of the fabric.
- e. Repeat for all other spikes.

4. Sew COLOUR B cape:

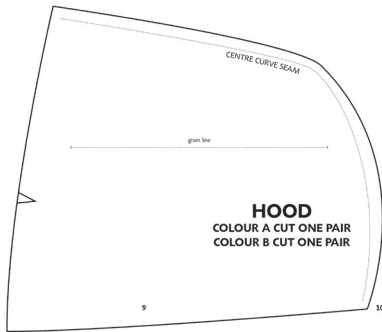
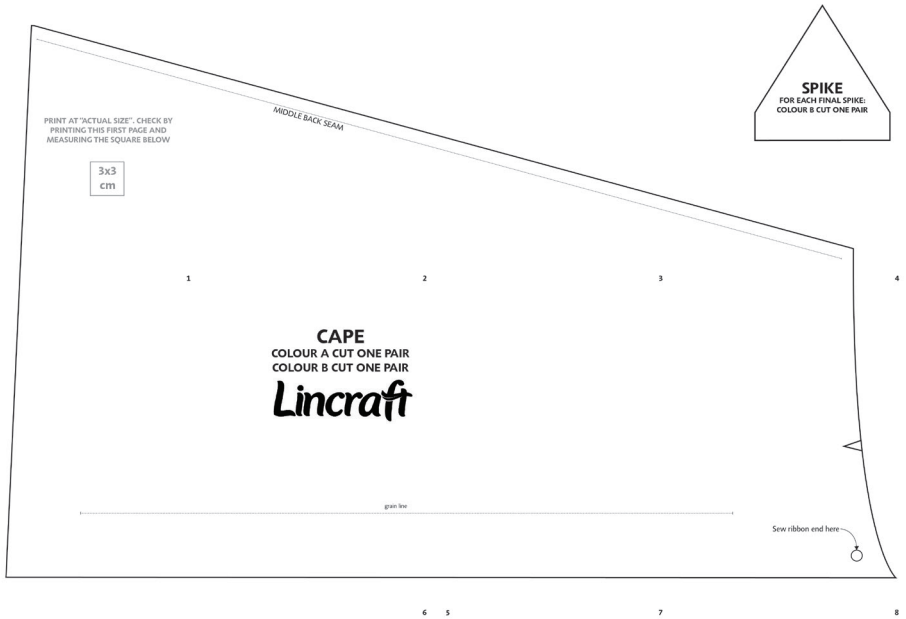
- a. Lay half of the cape out flat, right side up. Pin the majority of your spikes evenly along the middle back seam so raw edges line up. Baste.
- b. Pin the other half of the cape along the *middle back* seam, right sides together and sew.
- c. Lay half of the hood out flat, right side up. Pin the remaining spikes evenly along the *centre curve* seam so the raw edges line up. Baste.
- d. Pin the other half of the hood, right sides together, along the *centre curve* seam and sew.
- e. Pin the top of the cape and the hood right sides together, lining up notches, and sew.
- f. Pin the end of a ribbon to the marked spot at the neck seam. Repeat for the other end of the seam with the remaining length of ribbon.

5. Pin COLOUR A and COLOUR B hooded capes right sides together and sew. Be sure to leave a 10cm gap along the bottom of the cape and to avoid catching any of the ribbon or spikes in the edge seam.

6. Turn right side out and hand stitch the gap closed.

7. To wear, place the hood over the child's head and tie the ribbon loosely to secure.



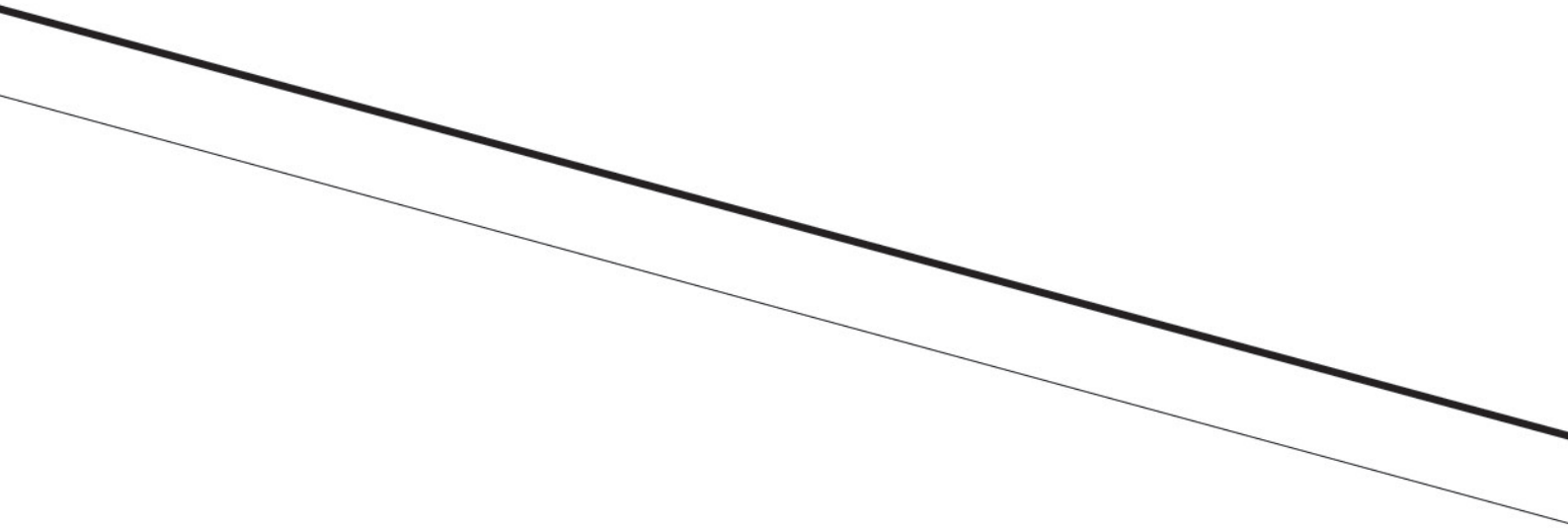


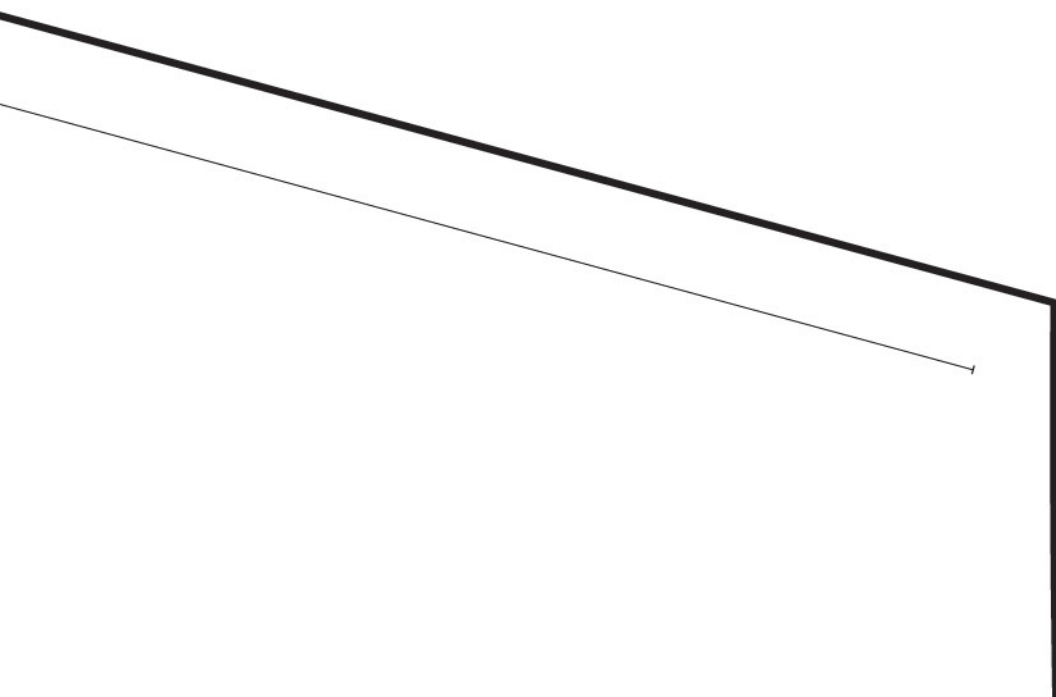
**PRINT AT "ACTUAL SIZE". CHECK BY
PRINTING THIS FIRST PAGE AND
MEASURING THE SQUARE BELOW**





MIDDLE BACK SEAM







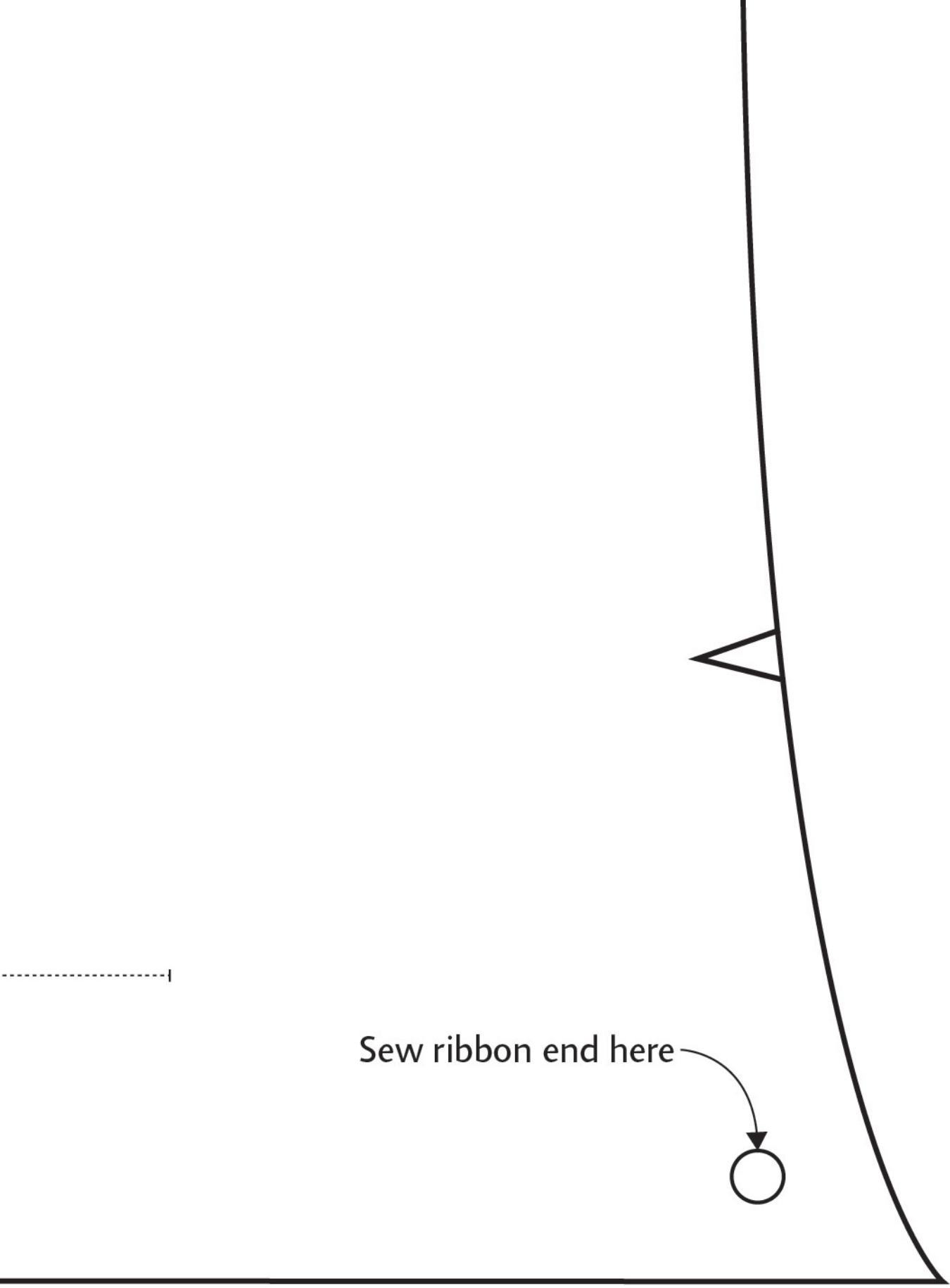
CAPE

COLOUR A CUT ONE PAIR

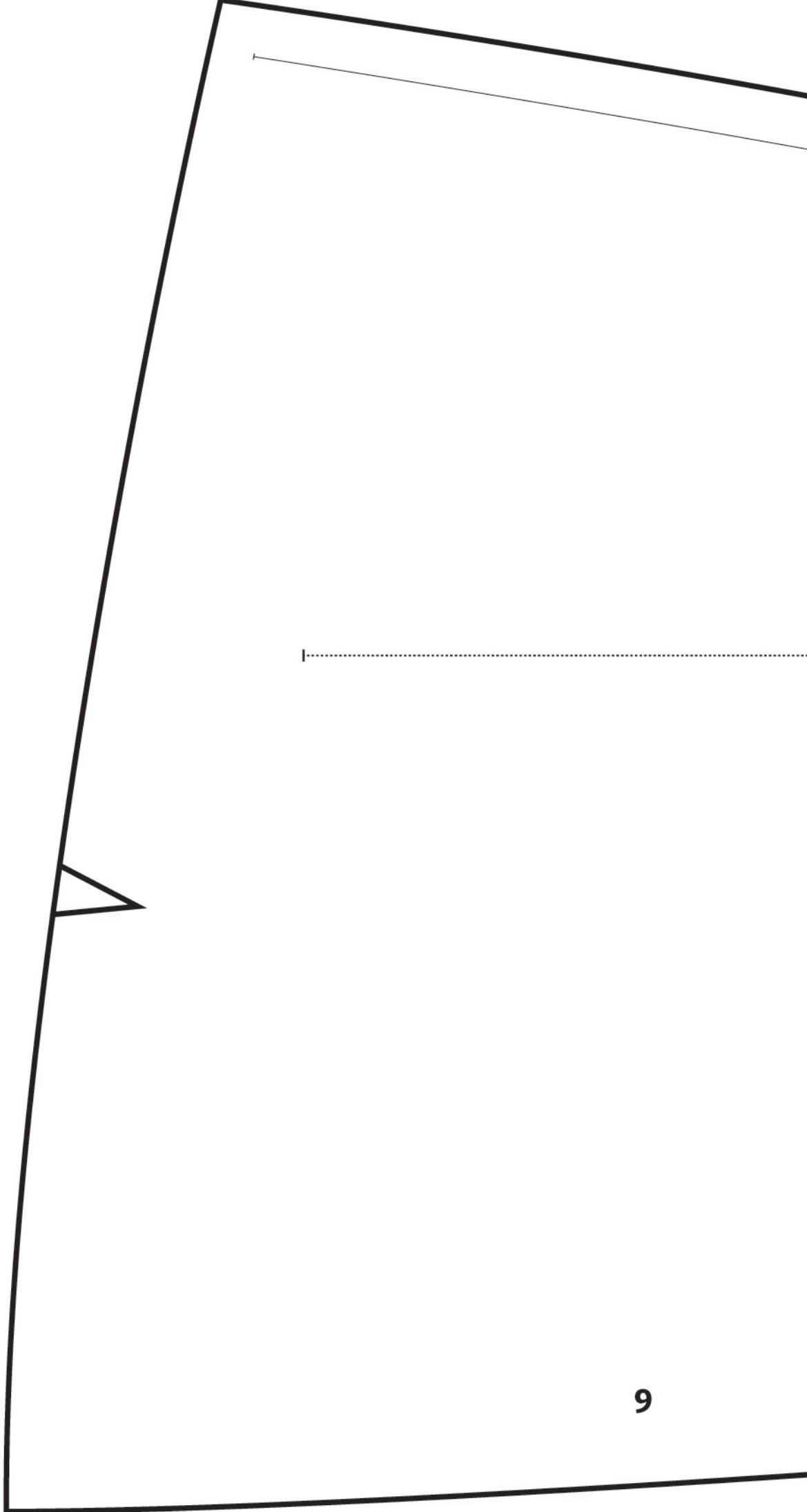
COLOUR B CUT ONE PAIR

Lincraft

grain line



Sew ribbon end here



CENTRE CURVE SEAM

grain line

HOOD

COLOUR A CUT ONE PAIR
COLOUR B CUT ONE PAIR