

how to
make



Lincraft



Face Mask

#A730

PLEASE NOTE: Keep up to date with the latest health advice provided by the Government and the World Health Organisation in regards to cleanliness, hygiene and how to properly wear a mask.

- www.health.gov.au/resources/publications/coronavirus-covid-19-information-on-the-use-of-surgical-masks
- www.who.int/emergencies/diseases/novel-coronavirus-2019/advice-for-public/when-and-how-to-use-masks
- <https://www.dhhs.vic.gov.au/face-masks-covid-19>

DIFFICULTY ●○○

Approximate Time of Project: 20 minutes

MATERIALS

30x20cm printed cotton/polyester fabric
30x40cm plain cotton fabric
Thread (complementary colour to fabric)
Elastic

EQUIPMENT

Fabric scissors
Sewing machine
Pins

HELPFUL HINTS

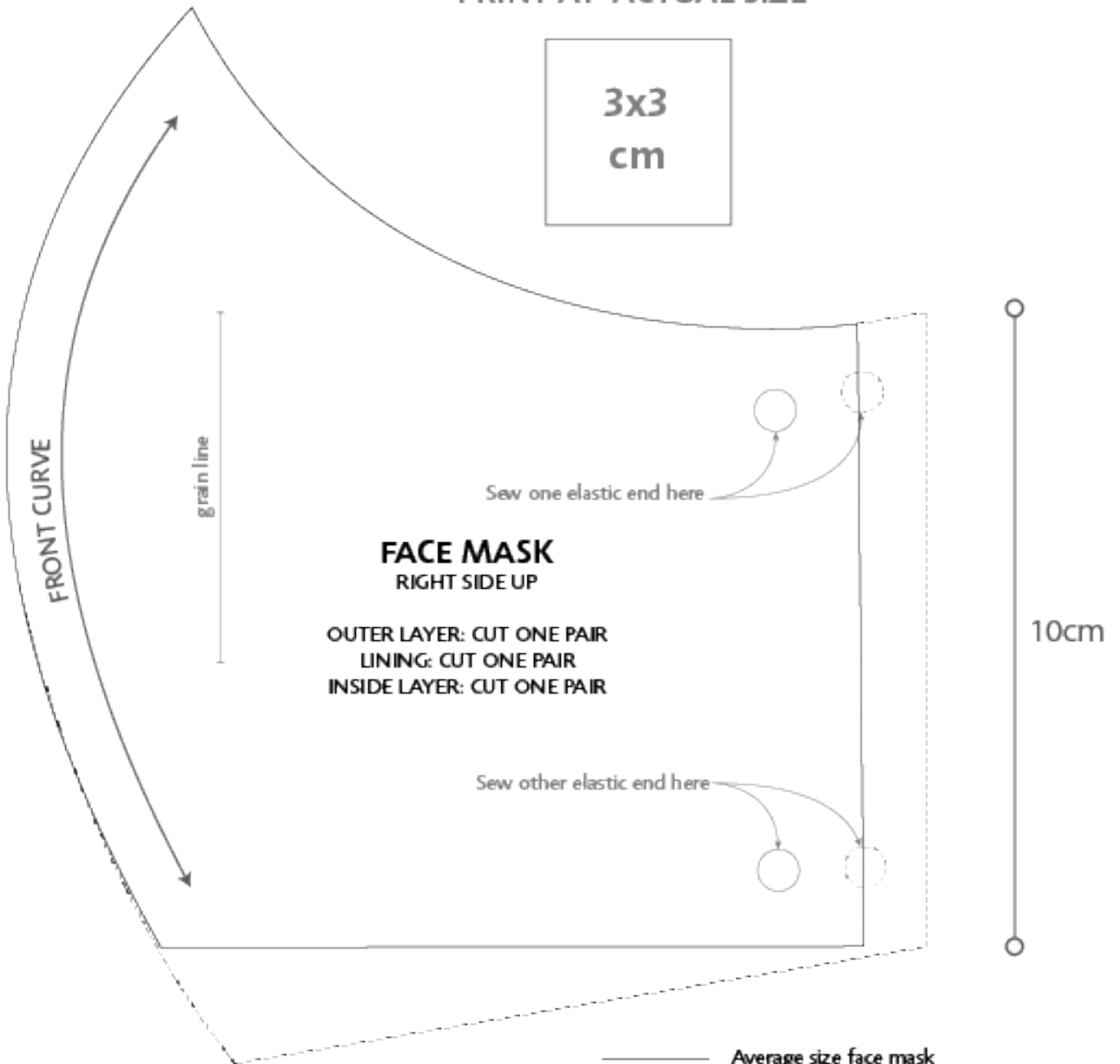
- Once on your face the mask should not be touched until removed. At which point you put it in a sealed plastic bag until you are able to wash and dry it. Because of this we recommend making a few so you always have one ready to go.
- This mask has three layers of fabric to make it. This will ensure it holds its shape and structure better and provides more protection.
- Print the mask template on A4 paper at "actual size". Seam allowance of 0.5cm included in pattern
- A 10cm piece of wire can be sewn into the edge of the mask where the bridge of the nose is to prevent glasses fogging up while wearing your mask.

STEPS

1. Use the CUT GUIDE and template provided to cut out fabric for one mask.
2. Cut two 15cm lengths of elastic.
3. Pin the two printed fabric pieces right side together along the FRONT CURVE and sew the curve.
4. Place two pieces of plain fabric right sides together. Stack the remaining two pieces on either side so they sandwich the first two pieces. Pin and sew through all four layers along the FRONT CURVE.
5. Pin the ends of the elastic to the right side of the printed fabric at the circles marked on the template. Baste so raw edges line up.
6. Open the fabric pieces and place right sides of the outer and inside pieces together.
7. Pin around edges making sure not to catch elastic loop and sew leaving a 4cm gap at the bottom of the mask.
8. Turn right side out so the print fabric is on one side, plain in the other and elastic loops on either end.
9. Turn in seam allowance, press and top stitch.
10. Wash mask with regular laundry soap or by hand with soap and allow to dry completely before wearing.
11. Wash your hands, with soap, or use disinfectant with at least 60% alcohol then pick up mask and place it over your mouth and nose catching the loops over your ears to hold it in place.



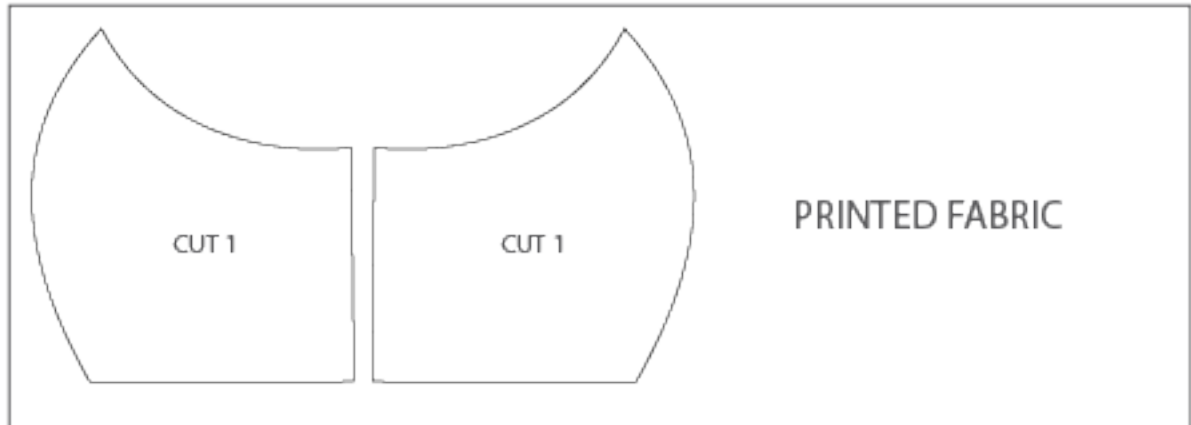
PRINT AT "ACTUAL SIZE"



FACE MASK
RIGHT SIDE UP

OUTER LAYER: CUT ONE PAIR
LINING: CUT ONE PAIR
INSIDE LAYER: CUT ONE PAIR

- Average size face mask
- Larger size face mask



FABRIC CUT GUIDE

