



how to
make

Wizard

#A556

DIFFICULTY ●●●

Approximate Time of project: 2+ hours

MATERIALS

Black suiting fabric
 Note: please see robe instructions for amount of fabric required.
 30cm Burgundy coloured fabric
 2 x Ruby felt
 6 x Yellow felt
 Wood knitting needle
 Brown paint
 Gold paint
 Black elastic
 Thread
 Button up shirt
 Black pants

EQUIPMENT

Sewing machine
 Pins
 Scissors
 Hot glue gun
 Paint brush
 Paint palette
 Tailor's chalk
 Tape measure

STEPS

TIE

1. Place two ruby felt pieces together and draw a basic tie shape with tailor's chalk.
2. Cut out the tie shape.
3. Cut yellow strips of felt and using the hot glue gun, secure to the one of the tie shapes. Trim any excess felt.
4. Cut the black elastic to the length that comfortably sits around the shirt collar.
5. Using the hot glue gun, glue the elastic in-between the tie shapes.
6. Glue tie shapes together.

WAND

1. Using the hot glue gun, create patterns on the knitting needle.
2. Once glue has dried, paint with brown and gold paint.

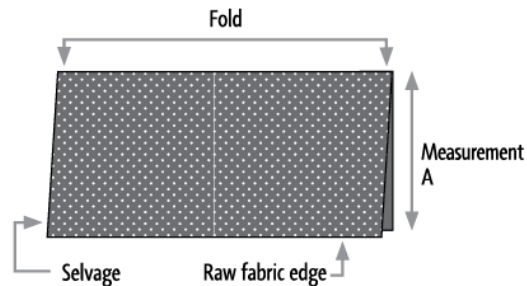
SCARF

1. Cut a strip of 30cm of the burgundy fabric.
2. Pin yellow felt onto the fabric to create stripes.
3. Stitch the felt to the fabric.
4. Fold the fabric with right sides together.
5. Turn tube right way around and stitch closed the gap.

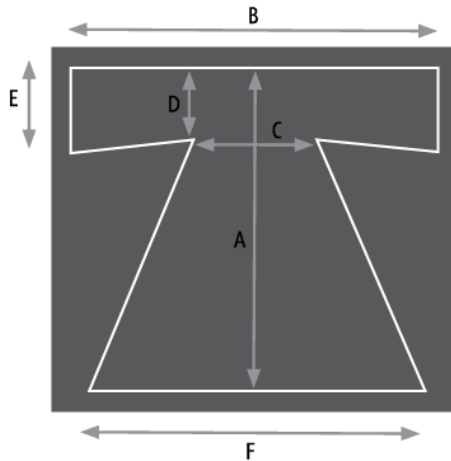
ROBE

Note: The amount of black fabric needed is double of measurement A. e.g. If A is 90cm, you will need 1.8m of black fabric for the robe.

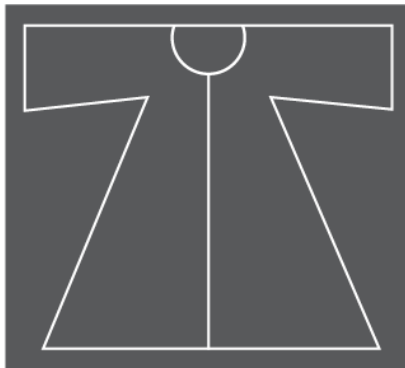
1. Note down the following measurements.
 - A - Back Neck to floor.
 - B - Neck to wrist.
 - C - Chest width.
 - D - Upper arm measurement.
2. Fold fabric so right sides are together and that raw edges are as follows:



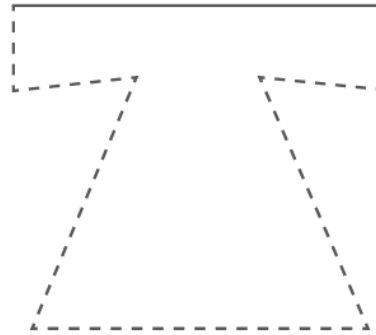
- With the tailor's chalk, draw the robe shape on the folded fabric using the following measurements. Note that measurement B is across the folded edge.
 - A – Back neck to floor
 - B – Arm Length x 3
 - C – Chest measurements plus 10cm
 - D - Upper arm measurement plus 10cm
 - E – Upper arm measurements plus 15cm
 - F – Chest measurement plus 40cm



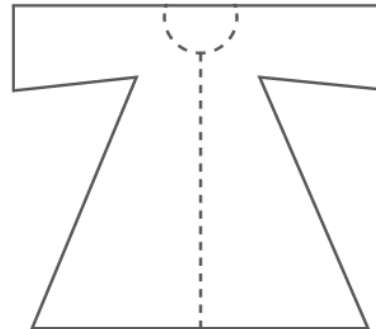
- Draw a line down the centre front and a half circle for the neck.



- Cut out the robe shape. Do not cut along the top of the arms.



- Carefully cut open the front of the robe and neck shaping on the top layer of the fabric.



- Pin and stitch the sides and sleeves together.
- Complete a rolled hem on all raw edges.

