

Surge suppressor, RC element, 400 ... 600 V AC, for motor contactors Size S0,

| General technical data                        |     |                           |
|---|-----|---------------------------|
| product brand name                            |     | SIRIUS                    |
| product designation                           |     | surge suppressor          |
| size of contactor                             |     | S0                        |
| design of the surge suppressor                |     | with RC elements          |
| ambient temperature                           |     |                           |
| • during storage                              | °C  | -40 ... +80               |
| • during operation                            | °C  | -25 ... +60               |
| Control circuit/ Control                      |     |                           |
| type of voltage of the control supply voltage |     | AC                        |
| control supply voltage frequency              |     |                           |
| • 1 rated value                               | Hz  | 50                        |
| • 2 rated value                               | Hz  | 60                        |
| control supply voltage 1                      |     |                           |
| • at AC                                       |     |                           |
| — at 50 Hz                                    | V   | 400 ... 600               |
| — at 60 Hz                                    | V   | 600 ... 400               |
| Installation/ mounting/ dimensions            |     |                           |
| mounting position                             |     | any                       |
| fastening method                              |     | clip-on                   |
| width   | mm  | 30                        |
| height  | mm  | 19                        |
| depth   | mm  | 12                        |
| Certificates/ approvals                       |     |                           |
| certificate of suitability                    |     | CE / UL / CSA             |
| General Product Approval                      | EMC | Declaration of Conformity |



[Miscellaneous](#)

Test Certificates

Shipping Approval

[Special Test Certificate](#)

[Type Test Certificates/Test Report](#)



other

Railway

[Confirmation](#)

[Vibration and Shock](#)

#### Further information

**Information- and Downloadcenter (Catalogs, Brochures,...)**

<https://www.siemens.com/ic10>

**Industry Mall (Online ordering system)**

<https://mall.industry.siemens.com/mall/en/en/Catalog/product?mlfb=3RT2926-1CF00>

**Cax online generator**

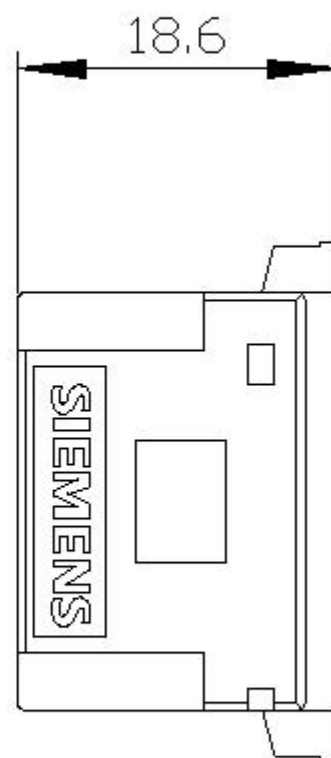
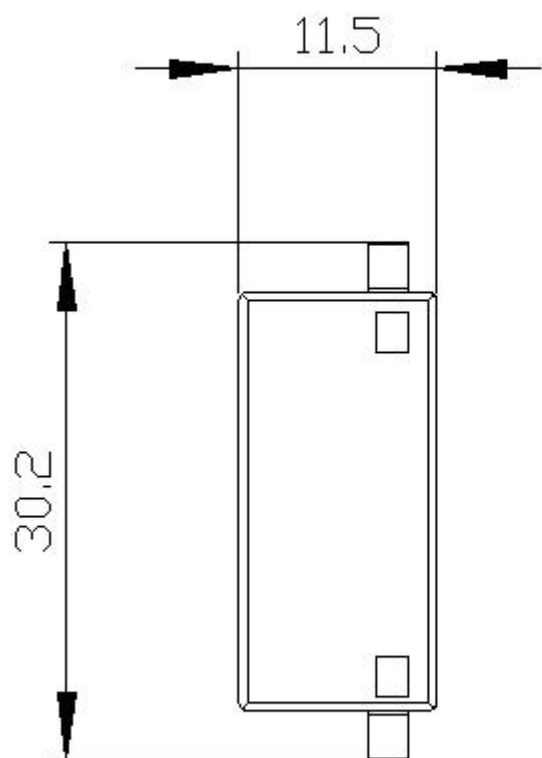
<http://support.automation.siemens.com/WW/CAXorder/default.aspx?lang=en&mlfb=3RT2926-1CF00>

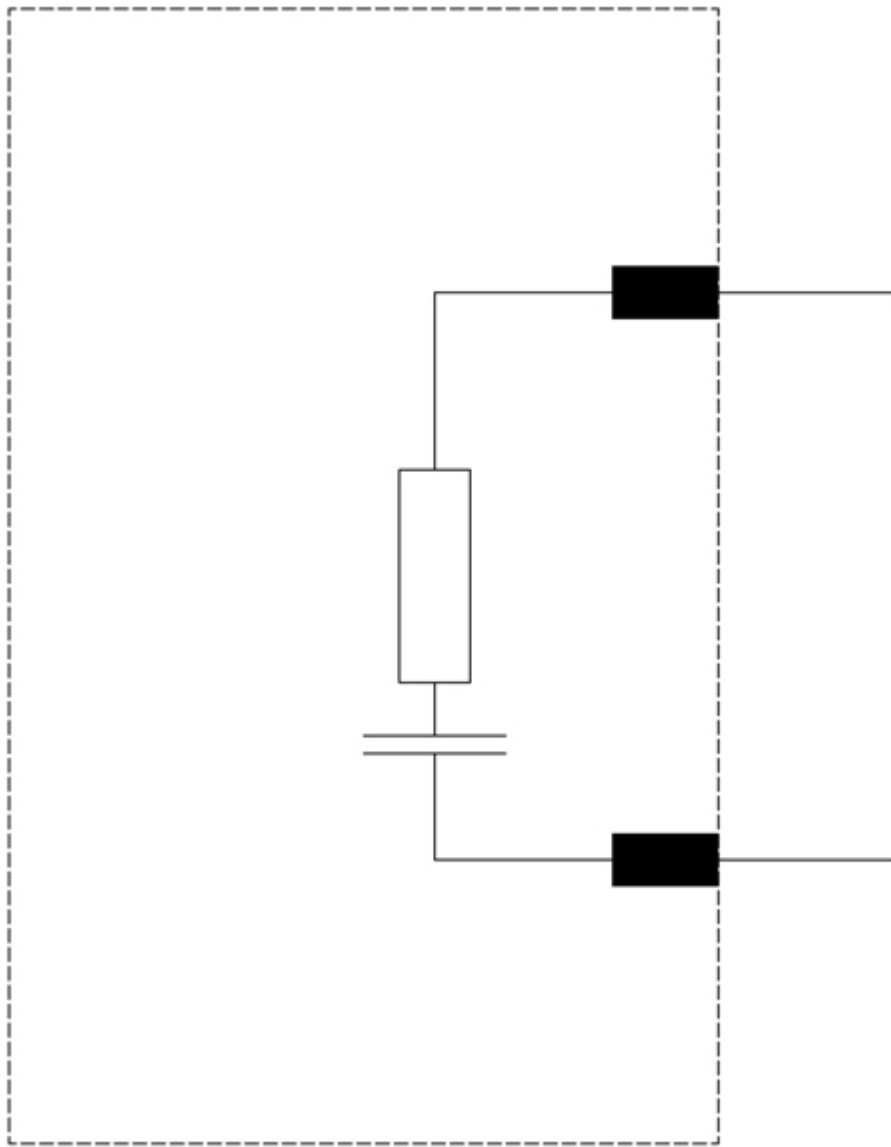
**Service&Support (Manuals, Certificates, Characteristics, FAQs,...)**

<https://support.industry.siemens.com/cs/ww/en/ps/3RT2926-1CF00>

**Image database (product images, 2D dimension drawings, 3D models, device circuit diagrams, EPLAN macros, ...)**

[http://www.automation.siemens.com/bilddb/cax\\_de.aspx?mlfb=3RT2926-1CF00&lang=en](http://www.automation.siemens.com/bilddb/cax_de.aspx?mlfb=3RT2926-1CF00&lang=en)





last modified:

12/23/2020 