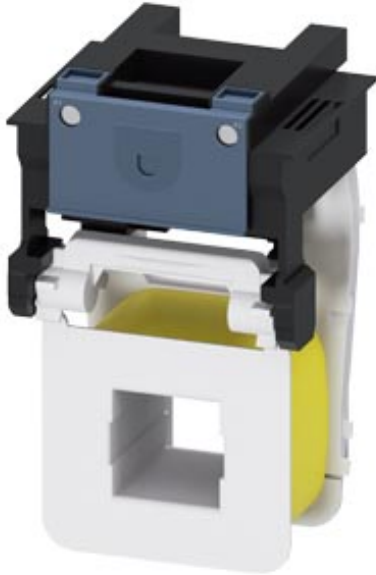


Changeover operating mechanism for contactors 3RT106, 3RT146  
 AC (50...60 Hz) / DC operation, 200 ... 220 V Operating mechanism:  
 Standard,economy circuit Screw terminal



### General technical data

<b>Product brand name</b>	SIRIUS
<b>Product designation</b>	Magnet coil

### Control circuit

<b>Type of voltage of the control supply voltage</b>	AC/DC
<b>Control supply voltage</b>	
<ul style="list-style-type: none"> <li>• 2 at AC                             <ul style="list-style-type: none"> <li>— at 50 Hz rated value 220 V</li> <li>— at 60 Hz rated value 220 V</li> </ul> </li> </ul>	
<b>Control supply voltage</b>	
<ul style="list-style-type: none"> <li>• 2 at DC rated value 220 V</li> </ul>	

### Certificates/ approvals

General Product Approval	EMC	Functional Safety/Safety of Machinery	Declaration of Conformity
--------------------------	-----	---------------------------------------	---------------------------



[Type Examination Certificate](#)



Declaration of Conformity	Test Certificates	Shipping Approval
---------------------------	-------------------	-------------------

[Miscellaneous](#)

[Special Test Certificate](#)

[Type Test Certificates/Test Report](#)



Shipping Approval	other	Railway
-------------------	-------	---------



[Confirmation](#)

[Miscellaneous](#)

[Special Test Certificate](#)

#### Further information

**Information- and Downloadcenter (Catalogs, Brochures,...)**

<https://www.siemens.com/ic10>

**Industry Mall (Online ordering system)**

<https://mall.industry.siemens.com/mall/en/en/Catalog/product?mlfb=3RT1965-5AM31>

**Cax online generator**

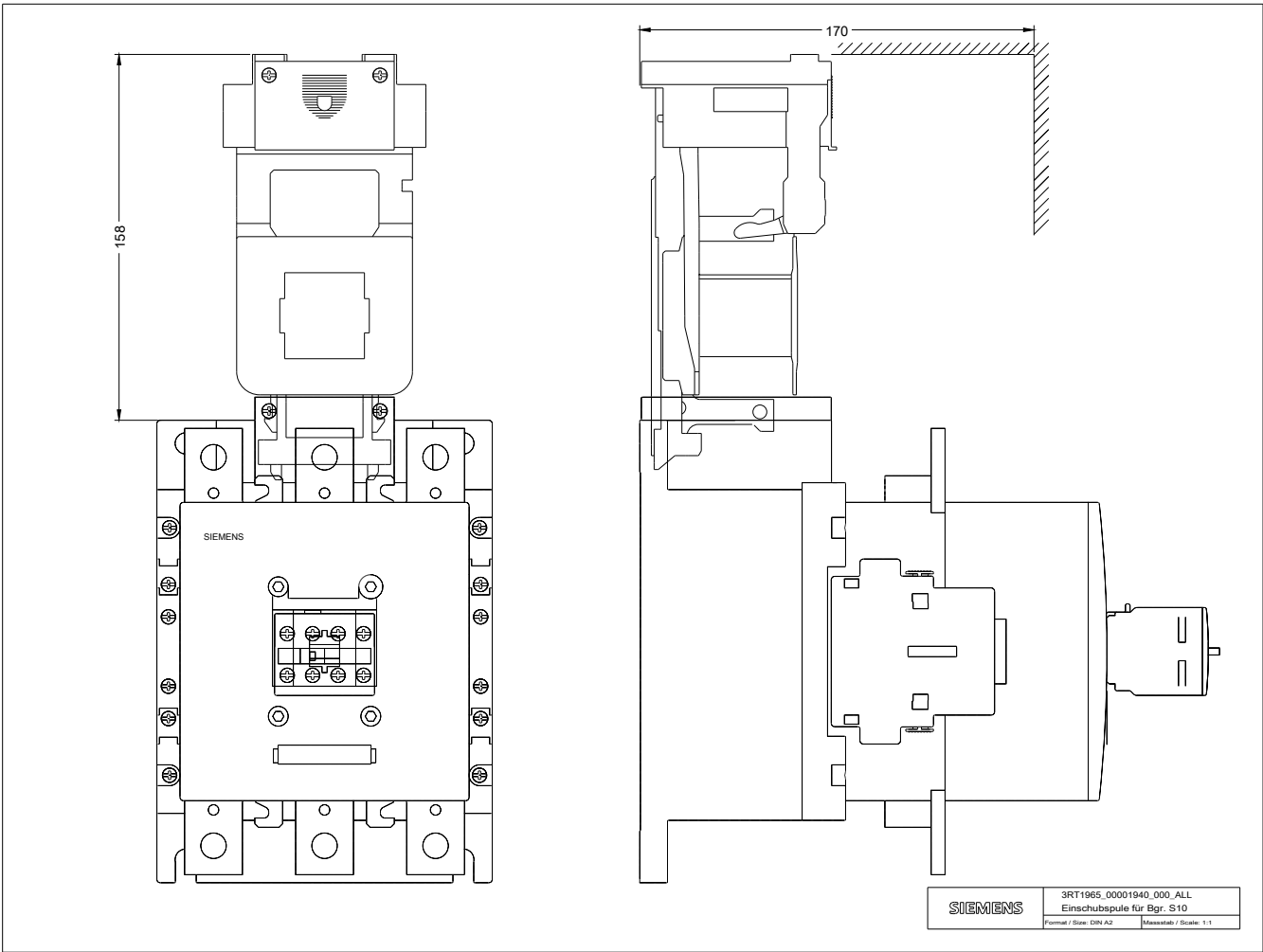
<http://support.automation.siemens.com/WW/CAXorder/default.aspx?lang=en&mlfb=3RT1965-5AM31>

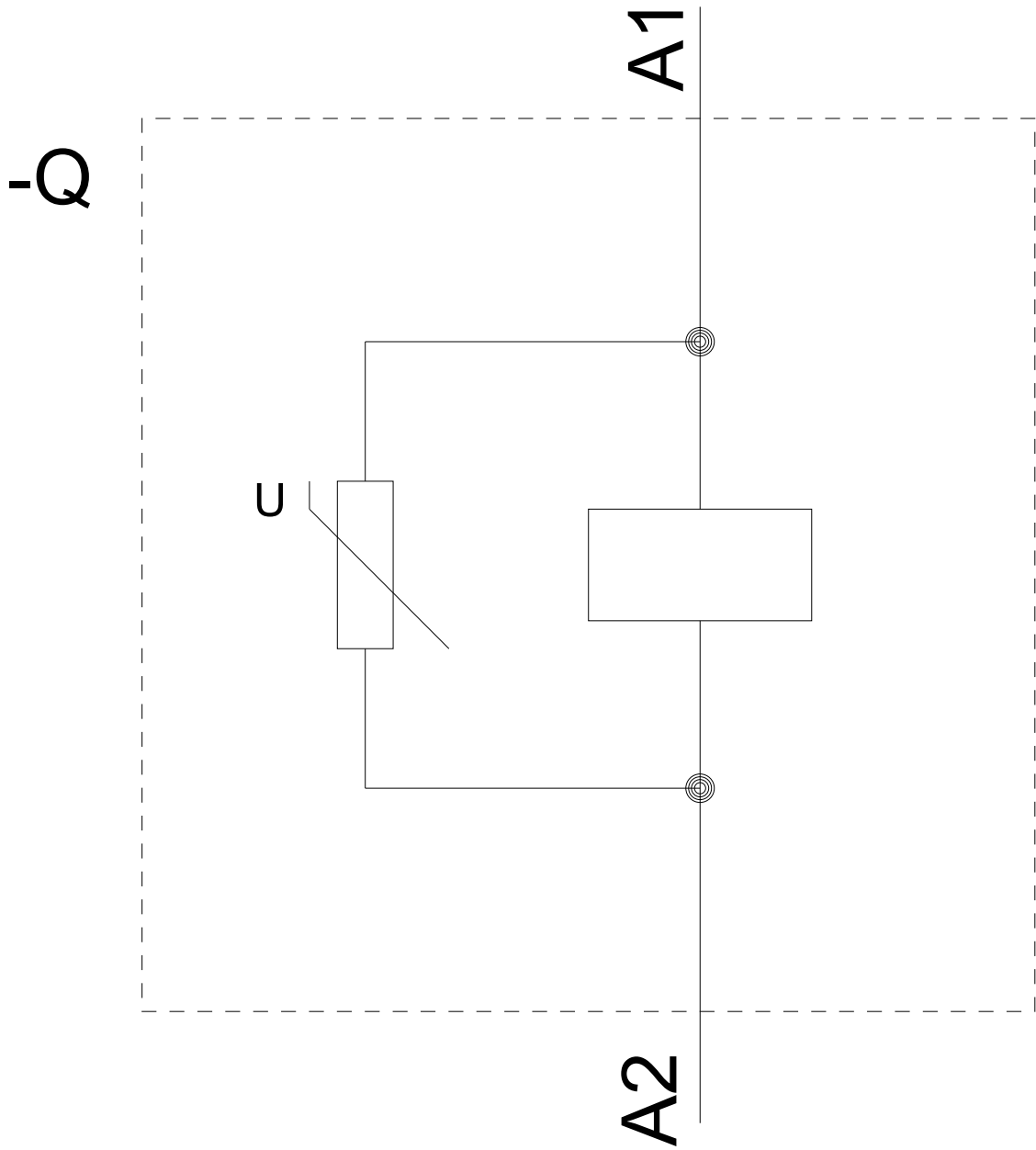
**Service&Support (Manuals, Certificates, Characteristics, FAQs,...)**

<https://support.industry.siemens.com/cs/ww/en/ps/3RT1965-5AM31>

**Image database (product images, 2D dimension drawings, 3D models, device circuit diagrams, EPLAN macros, ...)**

[http://www.automation.siemens.com/bilddb/cax\\_de.aspx?mlfb=3RT1965-5AM31&lang=en](http://www.automation.siemens.com/bilddb/cax_de.aspx?mlfb=3RT1965-5AM31&lang=en)





last modified:

01/18/2020