

Options & Accessories

Electric Heat Option

Integral electric heater coil and controls

- Protects wine cellar from low temperature conditions
- Ideal for areas where ambient temperatures fall below 50°F/10°C

Water-cooled H_2O

Integral water-cooled condenser coil to remove heat from refrigeration system

- Available on Ducted Wine Guardian systems only
- Ideal for geo-thermal or water cooling tower applications



Humidification

Drip pad type humidifier with integral evaporator fan, water valves, and controls

- Accessible humidifier pad for ease of maintenance
- Powered by 24 Volts from Wine Guardian unit; no separate power connections
- Cellar-mounted digital humidistat for precise humidity control
- Available as both freestanding or integrated models

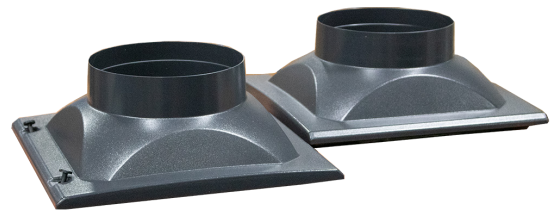


Integrated Humidifier

Duct Collars

Four duct collars (return, supply, intake, and exhaust) are standard. May be ducted from multiple outlets for applications versatility.

- Molded plastic design provides lightweight, rigid piece for connection to ductwork
- Can be sold as kits with flexible ductwork



Options & Accessories

Electric Heat Option

Integral electric heater coil and controls

- Protects wine cellar from low temperature conditions
- Ideal for areas where ambient temperatures fall below 50°F/10°C

Extreme Climate Protection Bundle



Required for continuous operation of Wine Guardian manufactured condensing units in climates that fall below 20°F

- Enables the system to operate in temperatures as low as -20°F

Humidification

Drip pad type humidifier with integral evaporator fan, water valves, and controls

- Accessible humidifier pad for ease of maintenance
- Powered by 24 Volts from Wine Guardian unit; no separate power connections
- Cellar-mounted digital humidistat for precise humidity control
- Available as both freestanding or integrated models



Integrated Humidifier

Duct Collars

One supply and one return duct collars are standard. May be ducted from multiple outlets for applications versatility.

- Molded plastic design provides lightweight, rigid piece for connection to ductwork
- Can be sold as kits with flexible ductwork

