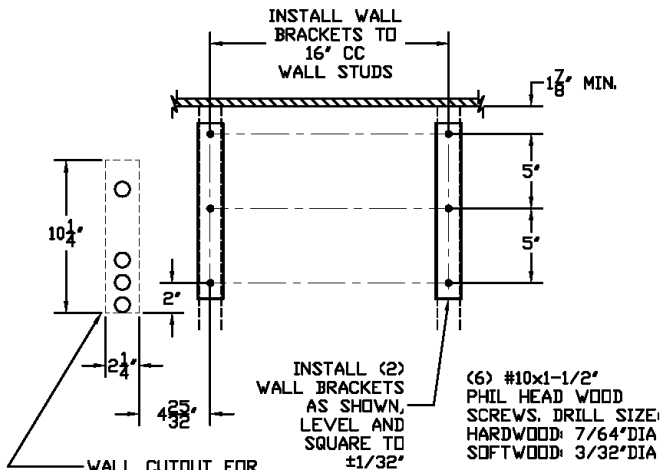


Evaporator Mounting Instructions

3000 Shqc-EC
4000 Shqc-EC

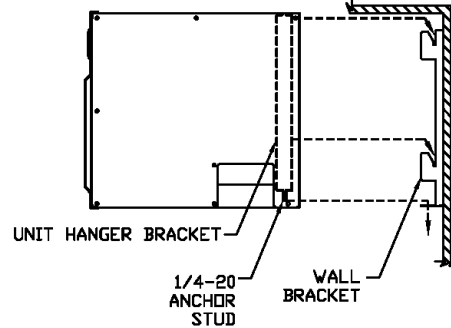
STEP #1



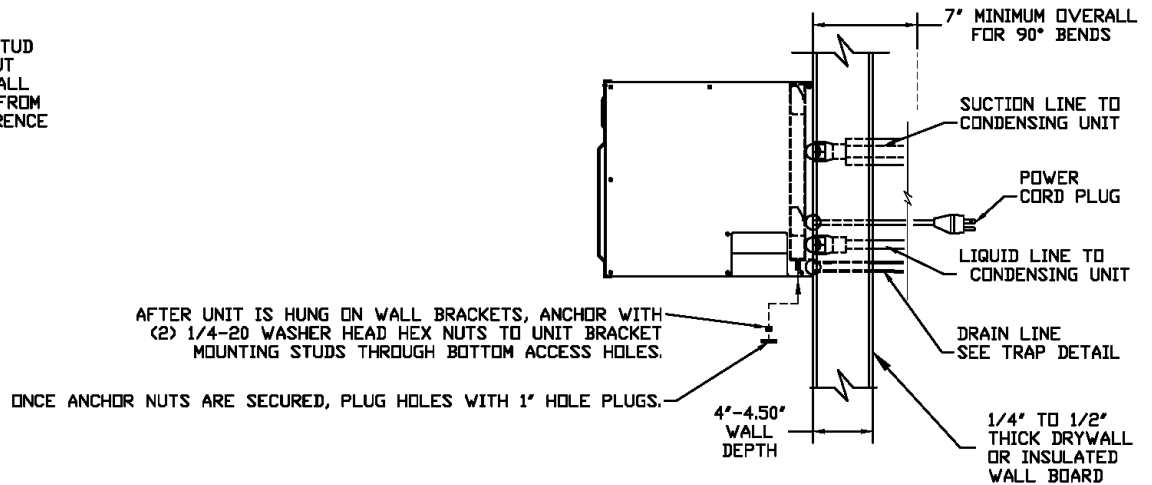
- WALL CUTOUT FOR REAR CONNECTIONS:
1. MARK LOWER LEFT MOUNTING HOLE ON VERTICAL MOUNTING STUD
 2. MAKE CUTOUT THROUGH WALL AS SHOWN FROM THAT REFERENCE POINT

STEP #2

1. (REAR CONNECTION ONLY) PULL REFRIGERANT LINES THROUGH CUTOUT AND CONNECT TO EVAPORATOR.
2. (REAR CONNECTION ONLY) RUN DRAIN LINE AND POWER CORD THROUGH CUTOUT.
3. SLIDE UNIT OVER WALL MOUNTING BRACKETS, ALIGNING SQUARE CUTOUT IN UNIT HANGERS WITH WALL BRACKET TABS. ONCE POSITIONED, ALLOW THE UNIT TO DROP INTO PLACE ON THE WALL BRACKETS, WITH ANCHOR SCREWS PASSING THROUGH THE WALL BRACKET BOTTOM HOLES.



STEP #3



2056C_R01