



**SECURE**  
**WEATHERPROOF**  
**ORGANIZED**  
**STORAGE**

MADE EXCLUSIVELY









# WORK SMARTER PLAY HARDER

That is our mantra. The reason we created DECKED. We know that every minute you save during the day, every trip in and out of your vehicle you avoid, every awkward lift you don't have to perform, means you'll gain an edge and have more time and more energy for what really matters. You're damn right we are zealots for good ergonomics and efficient organization. Driven by a passion for perfection and doing the right thing, we are proud to make our products from recycled materials right here in the good ol' US of A. We're even prouder to help improve the lives of those who rise early to get the job done.

We spent three years developing and engineering DECKED and the past four years refining our design with the help of real people in the field using DECKED daily. Thousands of happy customers (and four grouchy ones) later, we are here to say it's an honor to serve our hard working and harder playing customers with an innovative family of products designed to help you Work Smarter so you can Play Harder.







# WORK SMARTER

WE TOOK DIY PLYWOOD DRAWERS AND TURNED THE IDEA INTO AN ENGINEERED, RUGGED AND AFFORDABLE ORGANIZATION AND STORAGE SOLUTION FOR TRADESMEN AND WOMEN, COMMERCIAL CUSTOMERS, PUBLIC SAFETY RESPONDERS AND MILITARY APPLICATIONS...AND WE DID IT RIGHT HERE IN THE USA.





CASEY HAWKES | CUSTOMER SERVICE FIRST LITE

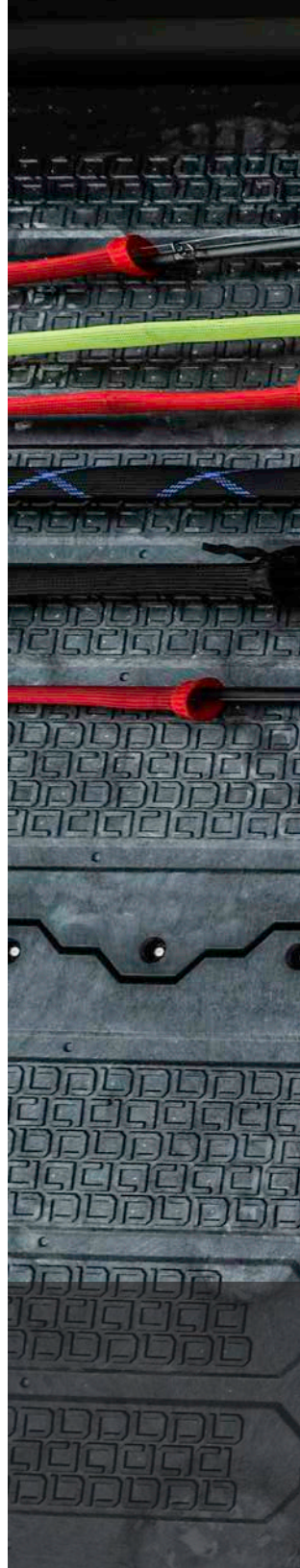
# PLAY HARDER

AS HARD AS YOU WORK, WE KNOW YOU PLAY HARDER. WE BUILT DECKED FOR GETTING OUT OF TOWN, BURNING GAS AND PURSUING DINNER, WHETHER IT HAS FOUR LEGS, WINGS OR FINS. DECKED'S 2000 LB PAYLOAD MEANS YOU CAN HAUL ALL YOUR GEAR AND STILL LOAD UP THE ATV OR THE MOTO. SO LOAD UP YOUR DRAWERS, AND GET BUSY LIVIN'.



# WORK SMARTER

OUR COMPANY MISSION IS TO MAKE LIFE EASIER FOR THE WORKING MAN AND WOMAN. WHATEVER YOUR MISSION, DECKED HELPS YOU WORK SMARTER WITH INCREASED EFFICIENCY AND LESS WEAR AND TEAR ON YOUR BODY.







# PLAY HARDER

FISHING, HUNTING, CAMPING, BOATING—YOU NAME IT. DECKED MAXIMIZES THE FLEXIBILITY OF YOUR VEHICLE'S BED. WE ENGINEERED DECKED TO KEEP YOUR GEAR DRY, SECURE AND ORGANIZED.



# DECKED

## ERGONOMIC

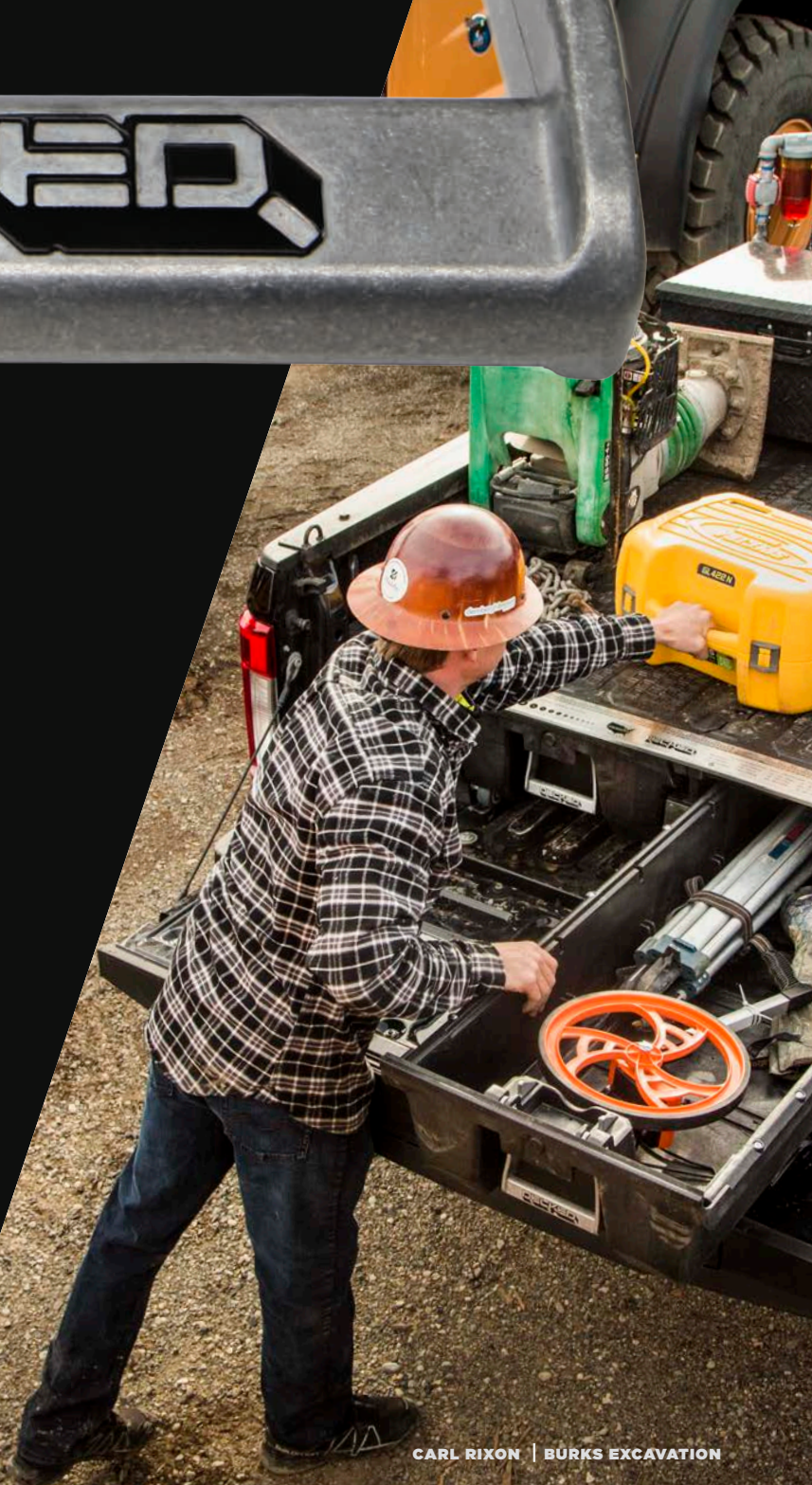
### ALL YOUR GEAR, RIGHT AT YOUR FINGERTIPS.

You don't need kneepads for negotiating contracts, so you shouldn't need them for accessing the tools and gear in the bed of your truck either. Smooth rolling, secure drawers bring all your goods sliding right out at tailgate height while still allowing full use of your truck bed or van cargo area. Grab a handle and get 'er done.

## ORGANIZED

### THERE'S NO SUCH THING AS TOO MUCH STORAGE.

"I'm too organized!" said no one, ever. Roll up to the jobsite ready to go with the tools and materials for the day organized, easily accessible and ready to rip. With DECKED's customizable storage, you'll end the junk show in the cab of your rig or bed of your truck. Be prepared for whatever the day throws your way.



CARL RIXON | BURKS EXCAVATION





JAROD SWEESY | PROFESSIONAL RIFLE COMPETITOR



# SECURE & WEATHERPROOF



## SECURE

With your tools, guns, rods and other gear organized in your DECKED system, they are as secure, if not more secure, than under a locked tonneau or canopy. Tailgate locks combined with our design, will keep the bad guys out.





### **CUSTOMIZABLE**

With more options than your facial hair, we've developed a collection of helpful accessories to help you get more out of your system through customizable configuration. Like the first day of Movember, the options are limitless.



### **RUGGED & DURABLE**

Built from zombie apocalypse-proof HDPE and anti-corrosion treated steel, DECKED is impervious to the elements. Designed to be left outside in all conditions, from under a blistering Texas sun to an Alaskan whiteout, DECKED is meant to be ridden hard and put away wet.



### **WEATHERPROOF**

DECKED drawers are designed to be fully weatherproof and ready for whatever Mother Nature might bring. While airborne particulate matter like mist or dust might penetrate the drawers, you're gonna have to really screw up and back your truck into a lake to swamp your stuff.



# FULL BED USE

## GAIN SURFACE AREA LIKE A BOSS.

DECKED elevates the bed floor of your truck 12," giving you full wall-to-wall storage right over the tops of your wheel wells. Need to load a pallet of stone, bunk of plywood or that new ATV you can't afford? No problem. With your essentials secure in the drawers underneath, you have full license to load 'er up.





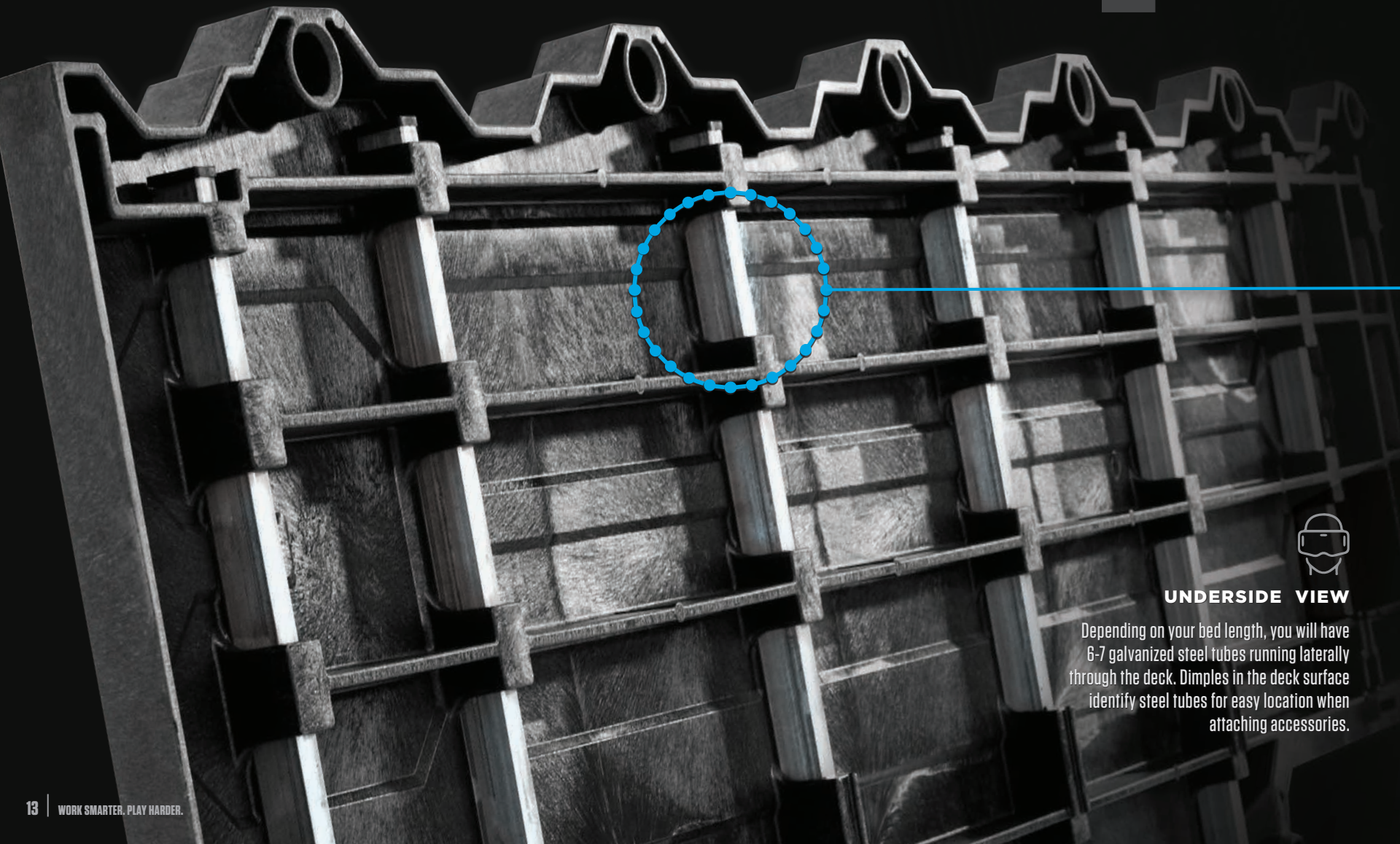




# HEAVY DUTY ENGINEERING

## UNMATCHED STRENGTH-TO-WEIGHT.

With a system payload of 2000 lbs and 200 lbs per drawer capacity at a total product weight of only 220-230 lbs (depending on model), DECKED has the strength-to-weight ratio of ten to one.



### UNDERSIDE VIEW

Depending on your bed length, you will have 6-7 galvanized steel tubes running laterally through the deck. Dimples in the deck surface identify steel tubes for easy location when attaching accessories.





### STRENGTH-TO-WEIGHT

Do the math: 2000lb payload, 200lb per drawer capacity at an overall weight of 220-230lbs. That's a heck of a lot of stuff you can load up without compromising your truck's payload capacity.



### HIGH DENSITY POLYETHYLENE (HDPE)

Impervious to the elements and extreme hot and cold environments, this stuff is the bullet-proof cockroach of recycled plastics.

### STEEL IS REAL

30% of the system weight is steel! Steel tubes are in-molded laterally into each deck.



### 2000 LB PAYLOAD

Your truck works as hard as you want it to think you do. A steel subframe skeleton in-molded to HDPE gives you the same payload capacity as a standard half-ton truck.



### CUSTOM FIT

Each DECKED system fits your bed like a glove. CAD engineering data is used to match the sidewall topography of your truck bed and van body for a perfect fit.



### EASY TO INSTALL (MINIMAL IMPACT)

We engineered DECKED to attach to bed tie downs and cargo attachment points with little to no drilling required for easy installation and removal.



### BEEFY WHEELS

Thanks to four sealed bearing wheels per drawer, our drawers roll as smoothly as butter in July.



### RECYCLED MATERIALS

We manufacture DECKED from 100% recycled HDPE and American steel for greening up your gas-burning everyday life.



### GOOD PARTS

You're into your truck. We're into our hardware. Our stainless steel, galvanized, e-coat, and zinc chromate anti-corrosion hardware treatments exceed industry standards.



# WHAT WE FIT

DECKED FITS MOST TRUCKS AND CARGO VANS MADE FROM THE LATE 90S TO TODAY. REFER TO DECKED.COM FOR OUR MOST CURRENT FITMENT GUIDE.



MIKE AND SIENNA BROWN |  
SKYLINE MOTO PARK, BOISE, ID



BURKS EXCAVATION |  
MAN CAMP, BELLEVUE, ID



## FULL-SIZE TRUCKS



## 8' BED INTEGRATION USES STANDARD 75" DECKED SYSTEM





@PHAZE2YOGI | NEATURE, CA



THE WORKING MAN | DETROIT, MI



**MIDSIZE TRUCKS**



**CARGO VANS**



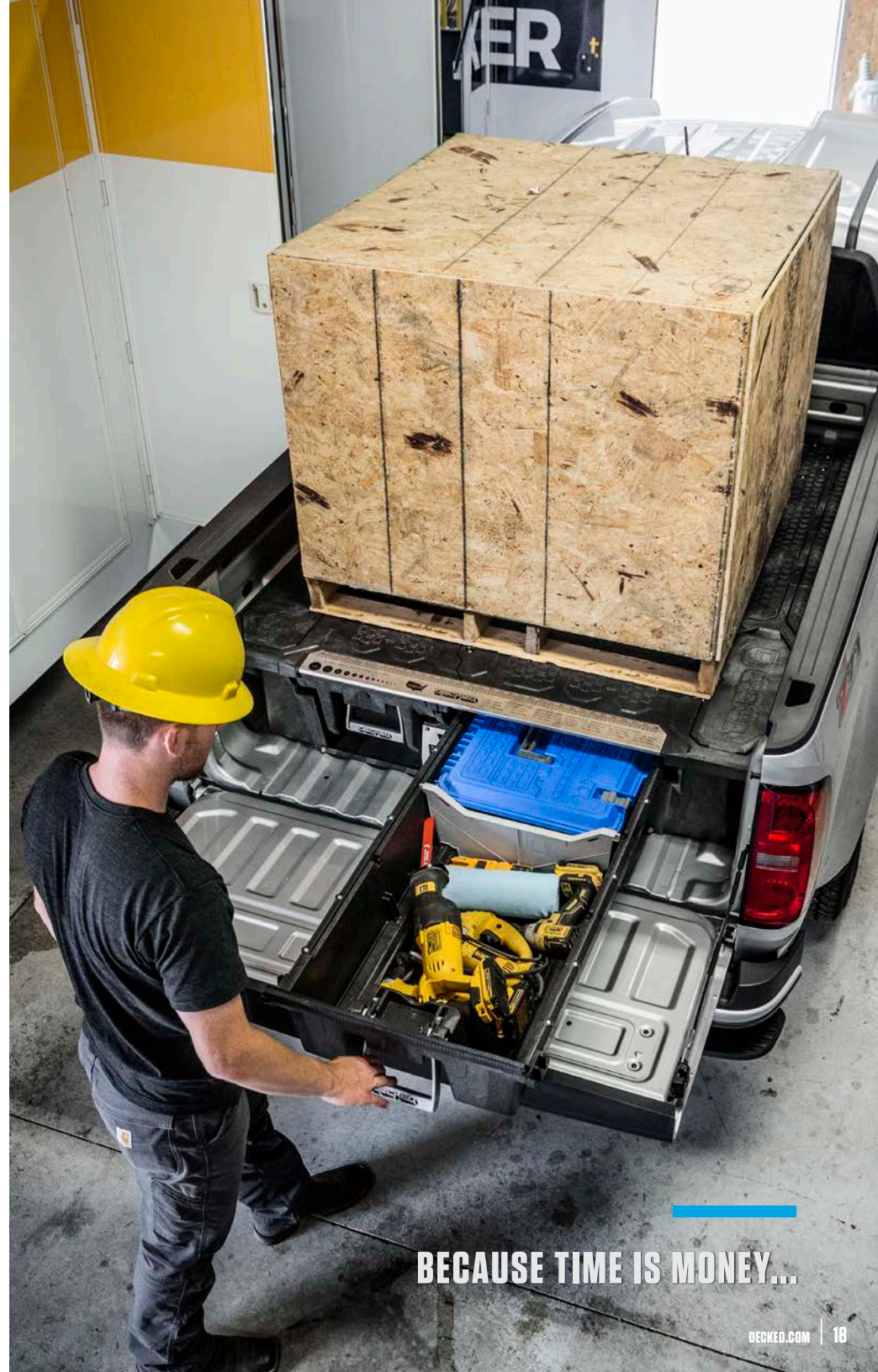
# WORK SMARTER



ASHLEY BAKER | RANCHER STANLEY, ID







BECAUSE TIME IS MONEY...





# PLAY HARDER







**SO MUCH EXTRA STORAGE, YOUR CARGO PANTS ARE GOING TO BE JEALOUS.**

WILCO OFFROAD | PUBLIC LANDS, USA



**FRANK BROWN |  
LOST RIVER OUTFITTERS**



**NICK BERGER | BOULDER MOUNTAINS, ID**



# TECHNICAL DATA: FROM OUR NERDS



## AMMO CAN STORAGE

Four ammo cans are located in the four corners of the DECKED full-size system offering additional storage. BONUS: Ammo can lids flip over to reveal drink holders.



## FULL-SIZE DRAWER

HEIGHT  
8.5"

WIDTH  
18" (top), 16.75" (bottom)

LENGTH  
SHORT BED: 61.4" (top), 55.4" (bottom)  
STANDARD BED: 72.1" (top), 66.1" (bottom)



## FULL-SIZE SYSTEM

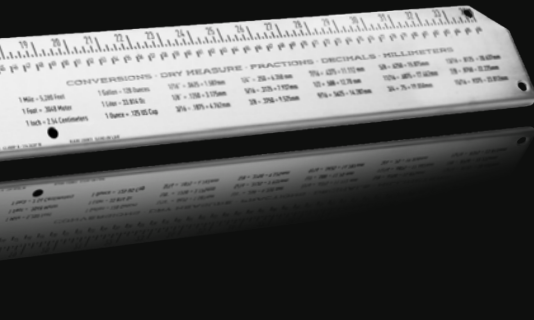
### SYSTEM WEIGHT CAPACITIES

DISTRIBUTED PAYLOAD	2000 LB
DRAWER CAPACITY (EACH)	200 LB

### SYSTEM DIMENSIONS

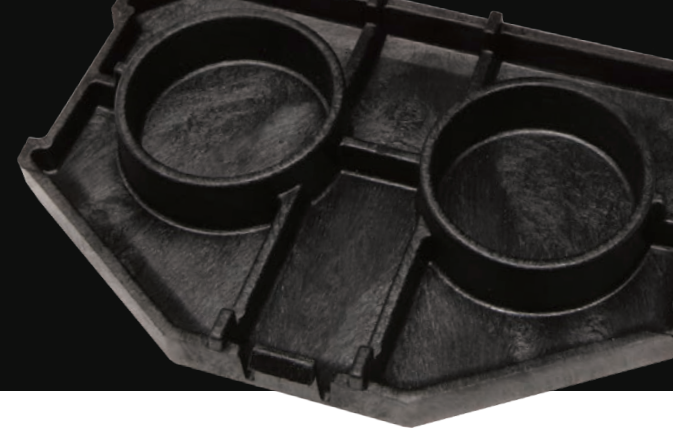
	SHORT	STANDARD
LENGTH	64.54"	75.25"
WIDTH (VARIES)	63"-71"	63"-71"
HEIGHT	12"	12"
TOTAL WEIGHT (LBS)	220	230





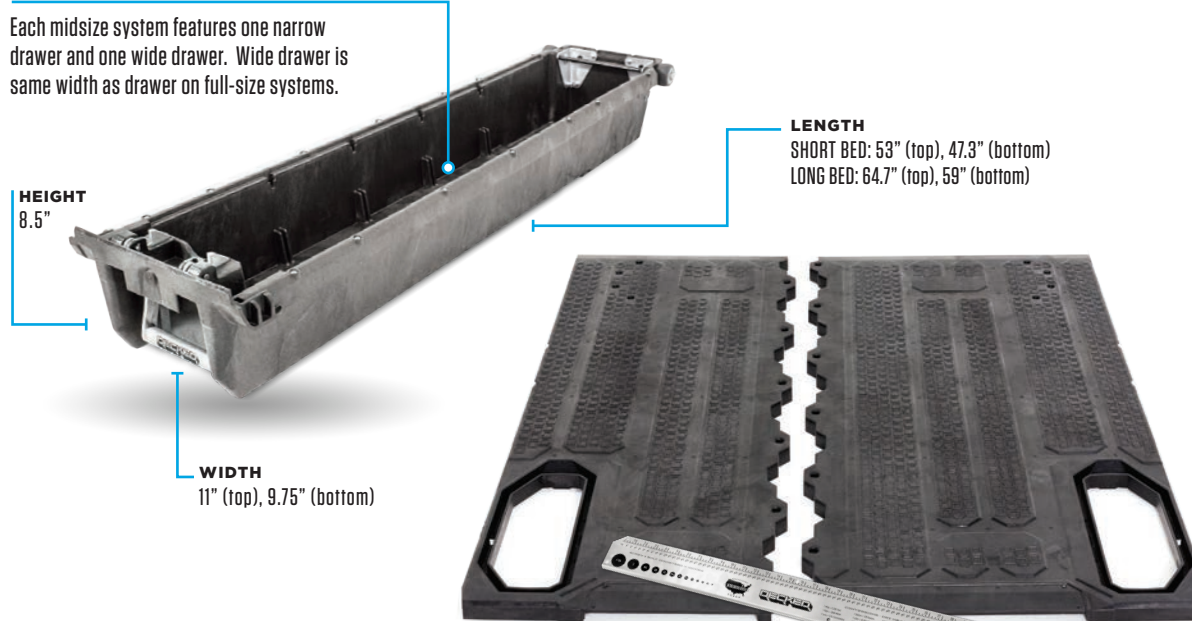
## FINE FINISHES

You love your truck, and at DECKED, we're the same way. To help you work smarter, we've provided a handy ruler with additional common conversion and bit guides. When it's quittin' time, our bottle opener and integrated cup holders make your tailgate the place to be.



## MIDSIZE NARROW DRAWER

Each midsize system features one narrow drawer and one wide drawer. Wide drawer is same width as drawer on full-size systems.



**HEIGHT**  
8.5"

**WIDTH**  
11" (top), 9.75" (bottom)

**LENGTH**  
SHORT BED: 59" (top), 47.3" (bottom)  
LONG BED: 64.7" (top), 59" (bottom)

## MIDSIZE SYSTEM

### SYSTEM WEIGHT CAPACITIES

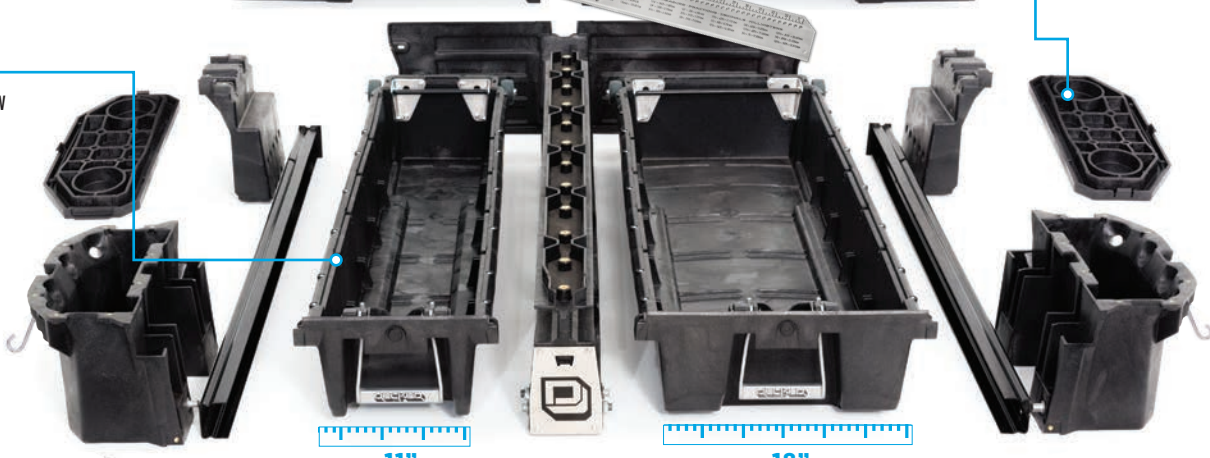
DISTRIBUTED PAYLOAD	2000 LB
DRAWER CAPACITY (EACH)	200 LB

### SYSTEM DIMENSIONS

	SHORT	LONG
LENGTH	56.28"	68"
WIDTH (VARIES)	56"-64"	56"-64"
HEIGHT	12"	12"
TOTAL WEIGHT (LBS)	205	229

## DETENT STOP

New for midsize, drawers now feature an integrated detent stop which prevents drawers from rolling closed even on steep inclines.



11"

18"

Ammo can lids flip over to reveal cup holders.  
UNDERSIDE VIEW SHOWN.



## AMMO CAN STORAGE

Two roomy ammo cans are located in the tailgate corners of midsize systems. Weatherproof for storing extra items.



# D-BOX + CROSSBOX

Get maximum cargo storage efficiency and drawer functionality with our durable, weatherproof toolboxes. Both the original D-Box and our new, half-size Crossbox feature a ruler and common bolt/bit guide as well as locking latches. Designed to nest perfectly in DECKED drawers.

Customize your storage. Set your D-Boxes and Crossboxes up to hold hand tools, cordless tool sets, fishing tackle, emergency gear, your camping kitchen, bug-out kit or whatever else you can imagine.



**CROSSBOX**

**D-BOX**

**REMOVABLE DIVIDERS**



## NEW: CROSSBOX

Fits lengthwise in midsize drawers. Nests horizontally in full-size and midsize wide drawers.

MIDSIZE SYSTEM SHOWN

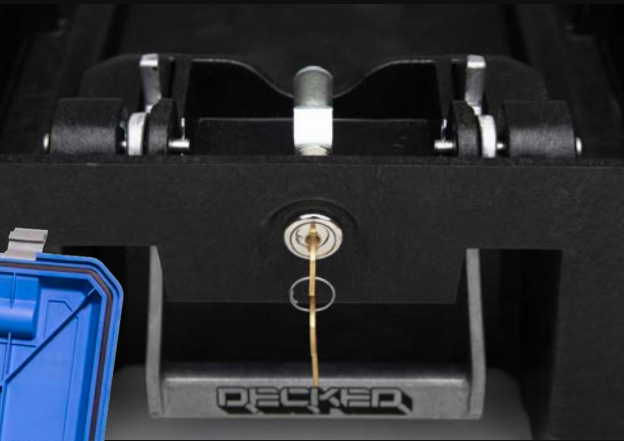


# ACCESSORIES

ALL ACCESSORIES SOLD SEPARATELY.

## LOCKS

Lock up your tools, guns, rods, skis and other valuable gear with our drawer lock and key system for added security.



## DRAIN PLUGS

Utilize drawer drain plugs to drain water from drawers. Makes cleaning up from an epic tailgate party a breeze.



## DIVIDERS

Get more out of your DECKED drawers with our removable dividers. Segment your space to fit your needs, and truly get organized for the task.



## T-TRACK RACK MOUNTS

DECKED T-Tracks bolt to the steel tubes in your deck allowing compatibility with Thule and Yakima rack systems. Made from 6061 T6 aluminum.



## CORE TRAX 1000

Custom Core Trax 1000 tie downs bolt to the steel tubes in your deck to secure bulky loads. Made from powder coated 6061 T6 aluminum with stainless steel tie down loops, Core Trax offer a 500lb pullout rating.



# DON'T JUST TAKE IT FROM US:

Take it straight from the source! Head over to our customer gallery to see how DECKED'ers use and customize their truck or van with their DECKED storage systems.

[DECKED.COM/GALLERY](https://www.decked.com/gallery)

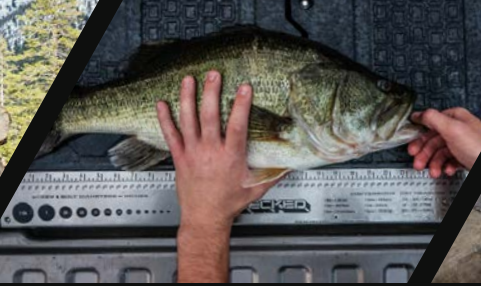




#DECKEDUSA  
@DECKEDUSA



@IDARADO



@IAMROAMR



NICK SHERRROD



JASON ALDEAN



LUKE WRONSKI | WILCO OFFROAD



AARON DAVIS

@PHAZE2YOGI





## WE BACK EVERYTHING WE MAKE

We have gone to great lengths in R&D and manufacturing to ensure that your experience is second to none. We are so confident you will be pleased with the quality of your system, that we back everything we make with a 3-year limited warranty against defects in materials and workmanship. Register your system at [DECKED.COM/register](http://DECKED.COM/register).

## GO TO [DECKED.COM](http://DECKED.COM) FOR FITMENT GUIDE

**CAUTION:** Prolonged exposure to DECKED may result in increased acts of manliness, elevated levels of awesome, unexpected quantities of free time and enlarged paychecks. Symptoms may include frequent requests to rescue animals stranded in trees, compulsive bending of iron with bare hands, uncontrollable desire to fix broken things and unexpected levels of attractiveness. Should you experience any of these, please recommend DECKED to a friend immediately.

**BIG THANKS:** Peterson Auto Group, Kiel Photography, Matchstick Productions, The Diesel Brothers, Wilco Offroad, Falken Tire, Kingston Photo, Aaron Davis Photo, Stellar Media, Idarado Media, Verde Fulfillment, Vince Baertchi, S.P.E.A.R Tactical, Leer, First Lite Hunting, ID Agency, Wheel Pro's, Northwest Lineman College, Weitz Construction, Purdy Ranch.



**DECKED, LLC**

P.O. BOX 885 KETCHUM, ID 83340  
P • 208.806.0251 F • 208.806.0199

E • [SALES@DECKED.COM](mailto:SALES@DECKED.COM)  
[MEDIA@DECKED.COM](mailto:MEDIA@DECKED.COM)

**DECKED.COM**

 [@DECKEDUSA](https://www.instagram.com/DECKEDUSA) | [#DECKEDUSA](https://www.instagram.com/DECKEDUSA)