



## GUIDE TO HOME CARE

Home Care Equipment Hire Guide &  
Tips to Better Infection Control

 [rentals@novis.com.au](mailto:rentals@novis.com.au)  
 [novis.com.au](http://novis.com.au)  
 1300 738 885

You are about to return home to continue your recovery.

It is on one hand a relief perhaps, but on the other hand, there are a lot to prepare.

If you are not set up with the right equipment to provide aided mobility around home to improve safety, we are here to help.

We have prepared this “Home Care & Better Infection Control Guide” to help you (end user and/or carer) to understand rental equipment options and costing, so you can easily transition over to a safe recovery environment back at home.

Everyone’s recovery journey may be different, but one thing is common – overlooking infection control as part of the health management plan.



### Equipment for Better Infection Control at Home

#### Shower Chair and Commodes

Bathroom and toileting equipment when designed well, can significantly improve safety and control infection.

Any equipment prescription always needs to consider the user’s preferences, safety, and sound clinical judgement. These criteria must be met to ensure safety, but what about the hygiene aspect of the equipment?

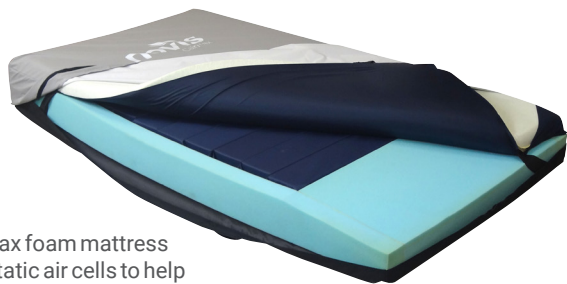
Because shower chair and commodes are constantly exposed to moisture and body waste, the equipment should have a completely sealed construction to make effective cleaning possible.

For example, the Etac Swift Commode comes with removable padding, and is designed so it is comfortable to sit on for dressing and undressing. Its “clean-line” design makes cleaning easier, in turn improves infection control in the highest infection risk area at home.

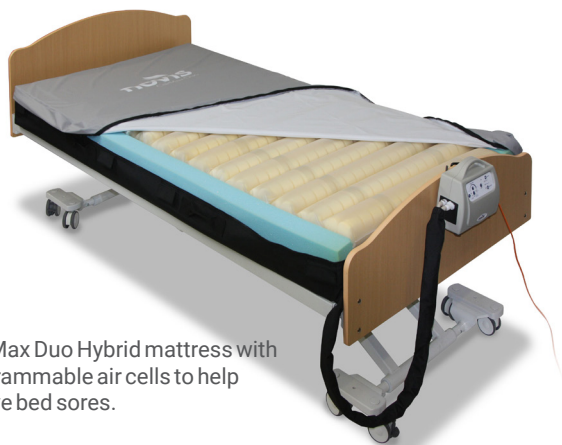
In toilet and bathroom, ergonomic design with no welding seams to harbour bacteria should be chosen over shower chairs and shower commodes with a lot of parts and/or joints. Etac My-Loo raised toilet seat takes seconds to install and it can be wiped cleaned easily.

**Less joints = less gaps = less infection risk.**





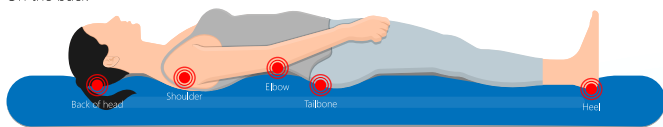
CairMax foam mattress with static air cells to help even distribution of body weight.



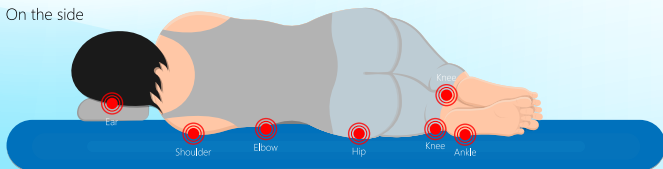
CairMax Duo Hybrid mattress with programmable air cells to help relieve bed sores.

The areas of skin most at risk of getting sore depends on lying down or sitting.

On the back



On the side



## Pressure Injury (Bedsore)

Injuries of the skin and underlying tissue resulting from prolonged pressure on the skin

Toileting or showering can become difficult during rehabilitation. Instead of a makeshift stool to use in their shower, get a safe shower stool or commode chair on weekly / monthly rental.

### Mattress and Bed

Recovering at home starts with safety. A rotating bed like Avalon can help minimise the risk of injury your loved one when moving from lying down to sitting to standing.

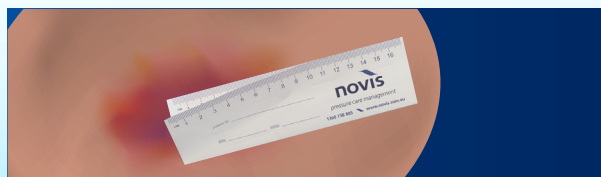
A rotating bed can help user change from laying down position to sitting to standing. When standing becomes easier with a rotating bed such as the Avalon Rotating Bed, the user is more likely to move a bit more, keeping skin away from possible bacterial infection due to prolonged sedation.

Choose a mattress that has a removable cover, in case of contamination and needing cleaning or replacement.

If your loved one has a pressure injury, prolonged laying down or sitting can aggravate infection.

In such cases, home care with a medical mattress is ideal. Choose an alternating pressure mattress such as CairMax Duo with air cells and programmable control unit to help circulation.

The Pressure Wound Ruler is handy disposable ruler you can use to track wound health by measuring the pressure wound periodically. This doesn't replace the professional wound care. Consult your wound care specialist for further advice.



Use Pressure Wound Ruler to track healing progress



Avalon Rotating Bed



CairMax Duo

One of the primary goals of wound care is to protect the wound base from outside contaminants such as bacteria.

Good Infection Control techniques can promote healthy healing of wound and recovery.

Unless you have medical background, infection control may seem difficult. However, there are techniques you can start today, to put into mindful practice to help everyone in the household to keep safe in this special time of rehabilitation.

## Practise Good Infection Control Techniques

### Hand Wash

Easily done yet often overlooked, washing hands for 20 seconds (which is about singing Happy Birthday twice) is the first line of defence to infection.

Wash hands correctly and thoroughly (not rinse hands in 2 seconds like we often see people do in

shopping mall toilets) is worth repeating and re-learning.

For healthcare workers, World Health Organisation's (WHO) 5 Moments is the basic hand hygiene practice. This is translatable to home care environment:

- before touching a wound
- before clean procedure
- after body fluid exposure / risk including after going to the toilet
- after touching a wound
- after touching patient surrounding

You may feel awkward to do so much cleaning, but the cost of not cleaning often is increase risk for infection not for the entire family!

Mattress, commode, wheelchair are all equipment which a patient touches and uses regularly. Be sure this type of equipment is cleaned and disinfected regularly.

Talk to us about home care equipment for better infection control for you and your loved one!

We wish you the very best in your recovery.



Everyone's recovery journey may be different, but one thing is common – overlooking infection control as part of the health management plan.

## Bathroom Aids



**Etac Clean Mobile Shower Commode**

PRODUCT CODE	80229211 <sup>DVA</sup>
WEEKLY RENTAL RATE	\$28/wk



**Etac Clean Self Propelled Mobile Shower Commode**

PRODUCT CODE	80229216 <sup>DVA</sup>
WEEKLY RENTAL RATE	\$38/wk



**Etac Swift Mobil Tilt Commode**

PRODUCT CODE	80209412
WEEKLY RENTAL RATE	\$66/wk

## Etac Clean Accessories



**Pan with Handle and Lid**

PRODUCT CODE	80209255 <sup>DVA</sup>
PURCHASE ONLY	\$59



**Soft Comfort Seat**

PRODUCT CODE	80209517 <sup>DVA</sup>
WEEKLY RENTAL RATE	\$10/wk

## Etac Swift Accessories



**Pan with Handle and Lid**

80209255 <sup>DVA</sup>
\$59 (Purchase only)



**Amputee Leg Support**

80209510
\$15/wk



**Elevating Leg and Calf Support**

80209437
\$15/wk



**Soft Comfort Seat**

80209306
\$10/wk

## Bathroom Aids



**Toilet Surround**

PRODUCT CODE	BL1165
WEEKLY RENTAL RATE	\$10/wk



**Etac Over Toilet Aid**

PRODUCT CODE	81702020 <sup>DVA</sup>
WEEKLY RENTAL RATE	\$10/wk



**Etac Swift Shower Chair**

PRODUCT CODE	81701030 <sup>DVA</sup>
WEEKLY RENTAL RATE	\$10/wk



**Etac Edge Shower Stool**

PRODUCT CODE	81801010 <sup>DVA</sup>
WEEKLY RENTAL RATE	\$10/wk



**Etac Fresh Bath Board**

PRODUCT CODE	81600024
WEEKLY RENTAL RATE	\$10/wk

## Mobility Aids



**Breezy BasiX2 Self Propelled Wheelchair**

PRODUCT CODE	074100-005
WEEKLY RENTAL RATE	\$20/wk



**Days Swift Transit Wheelchair**

PRODUCT CODE	ANI-DAYWHE338T18
WEEKLY RENTAL RATE	\$10/wk



**All Terrain Wheeled Walker (130kg)**

PRODUCT CODE	BL1423
WEEKLY RENTAL RATE	\$10/wk



**Maxi Plus All Terrain Wheeled Walker (220kg)**

PRODUCT CODE	BL8248
WEEKLY RENTAL RATE	\$30/wk



**Walking Frame**

PRODUCT CODE	BL1461 <sup>DVA</sup>
WEEKLY RENTAL RATE	\$10/wk



**Walking Frame with Wheels and Skis**

PRODUCT CODE	BL1234 <sup>DVA</sup>
WEEKLY RENTAL RATE	\$10/wk

## TO ORDER

Minimum hire periods apply on all hire items. Novis offers pickup, delivery and installation. All hire items are cleaned and sanitised to hospital grade standards.

 **1300 738 885**  
 **rentals@novis.com.au**  
 **1300 738 886**  
**novis.com.au / 1300 738 885**

## Patient Handling



**LiftAid 180 Patient Lifter (180kg)**

PRODUCT CODE	MHPH0418 <sup>DVA</sup>
WEEKLY RENTAL RATE	\$45/wk



**LiftAid 320 Patient Lifter (320 kg)**

PRODUCT CODE	MHPH0419 <sup>DVA</sup>
WEEKLY RENTAL RATE	\$75/wk



**Yoke and Pivot Slings**

PRODUCT CODE	All Slings <sup>DVA</sup>
WEEKLY RENTAL RATE	\$10/wk



**Pivot Frame Attachment**

PRODUCT CODE	MHPH0408 <sup>DVA</sup>
WEEKLY RENTAL RATE	\$10/wk



**Lifter Stand Up-Alegro Saalsa (200kg)**

PRODUCT CODE	SAL01
WEEKLY RENTAL RATE	\$60/wk



**ETAC Turner Pro**

PRODUCT CODE	16090106 <sup>DVA</sup>
WEEKLY RENTAL RATE	\$35/wk

## Bedroom



**Etac Swift Commode (3 in 1)**

PRODUCT CODE	81702030 <sup>DVA</sup>
WEEKLY RENTAL RATE	\$15/wk



**Overbed Table (raised edges)**

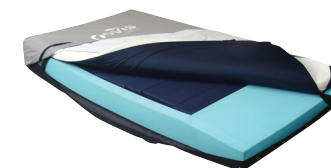
PRODUCT CODE	BL225T
WEEKLY RENTAL RATE	\$10/wk



**Community Bed (includes mattress and side rails)**

PRODUCT CODE	BE1005 <sup>DVA</sup>
WEEKLY RENTAL RATE	\$50/wk

## Pressure Therapy Support Surfaces



**CairMax Foam Air Support Surface**

PRODUCT CODE	FAMCM-R02	FAAMCM-R02K (King Single)
WEEKLY RENTAL RATE	\$20/wk	\$30/wk



**BetterLiving Mattress Overlay**

PRODUCT CODE	APMBL-L01
WEEKLY RENTAL RATE	\$40/wk



**BetterLiving Mattress Replacement System**

PRODUCT CODE	APMBL-R01
WEEKLY RENTAL RATE	\$65/wk

## Pressure Therapy Support



**ROHO High and Low Profile Cushions**

PRODUCT CODE	All Sizes <sup>DVA</sup>
WEEKLY RENTAL RATE	\$25/wk



**Equagel Protector Cushions**

PRODUCT CODE	All Sizes
WEEKLY RENTAL RATE	\$20/wk



**ProCair Plus Mattress Replacement**

PRODUCT CODE	APMPC-R02S
	APMPC-R02SK (King Single)
WEEKLY RENTAL RATE	\$110/wk
	\$120/wk



**ProCair Prime Mattress Replacement**

PRODUCT CODE	APMPC-R03
WEEKLY RENTAL RATE	\$80/wk
	with inbuilt control unit



Head Office: Unit 12, 12 Mars Road,  
Lane Cove West NSW 2066

Email: [rentals@novis.com.au](mailto:rentals@novis.com.au)